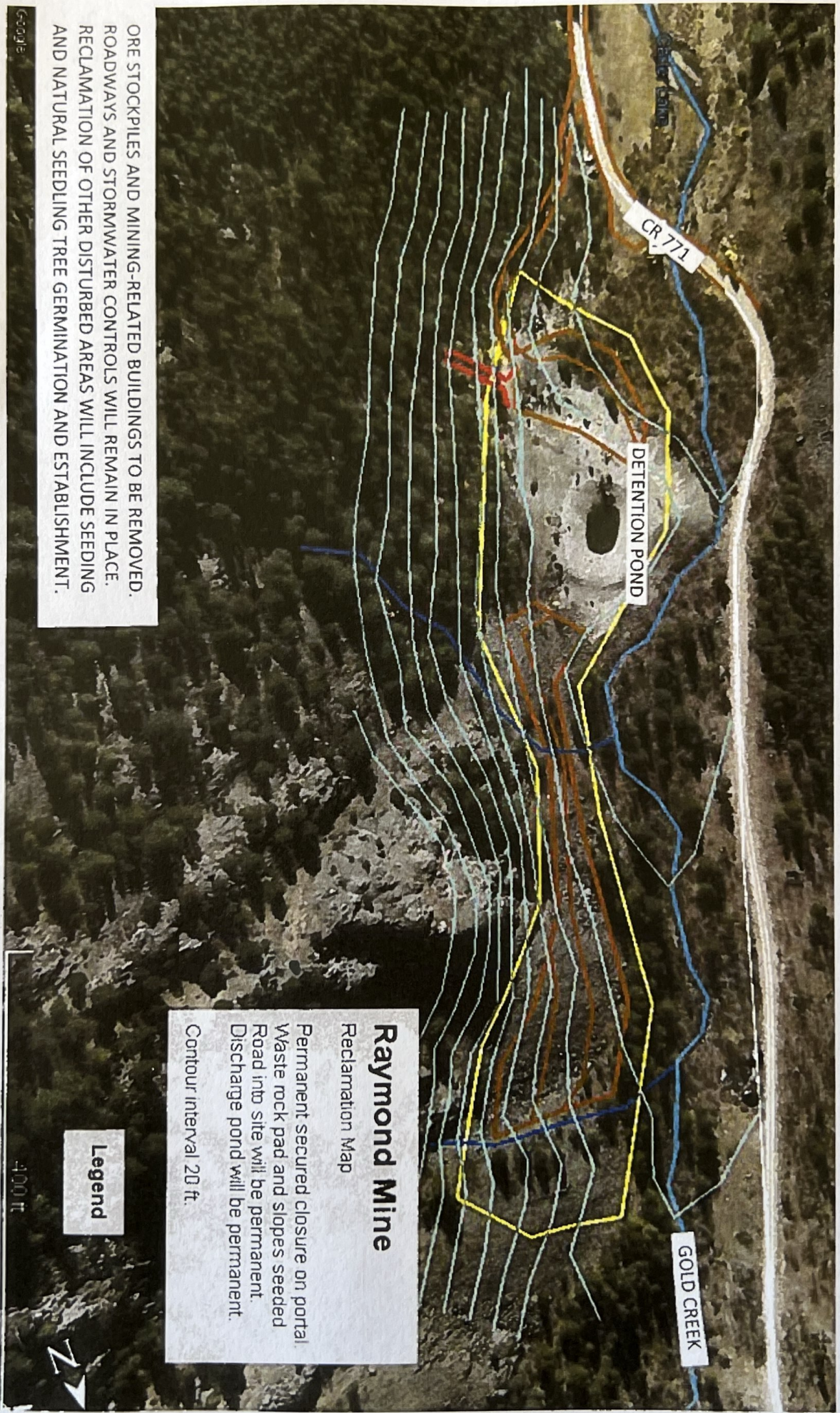


M-2020-013 2024 MAP

BY: JACOB WILKINSON
SMALLER L. 6/5/2025



ORE STOCKPILES AND MINING-RELATED BUILDINGS TO BE REMOVED. ROADWAYS AND STORMWATER CONTROLS WILL REMAIN IN PLACE. RECLAMATION OF OTHER DISTURBED AREAS WILL INCLUDE SEEDING AND NATURAL SEEDLING TREE GERMINATION AND ESTABLISHMENT.

Raymond Mine
Reclamation Map
Permanent secured closure on portal.
Waste rock pad and slopes seeded
Road into site will be permanent.
Discharge pond will be permanent.
Contour interval 20 ft.

Legend

400 ft

RAYMOND MINE RECLAMATION MAP

Map prepared by Bob Oswald, High Country Consulting Services LLC

EXHIBIT E.6 1 OF 5

Bob Oswald
on 1/29/20 (date)

ORE STOCKPILES AND MINING-RELATED BUILDINGS TO BE REMOVED.
ROADWAYS AND STORMWATER CONTROLS WILL REMAIN IN PLACE.
RECLAMATION OF OTHER DISTURBED AREAS WILL INCLUDE SEEDING
AND NATURAL SEEDLING TREE GERMINATION AND ESTABLISHMENT.

Scale

PER RAYMOND PORTAL RECLAMATION MAP

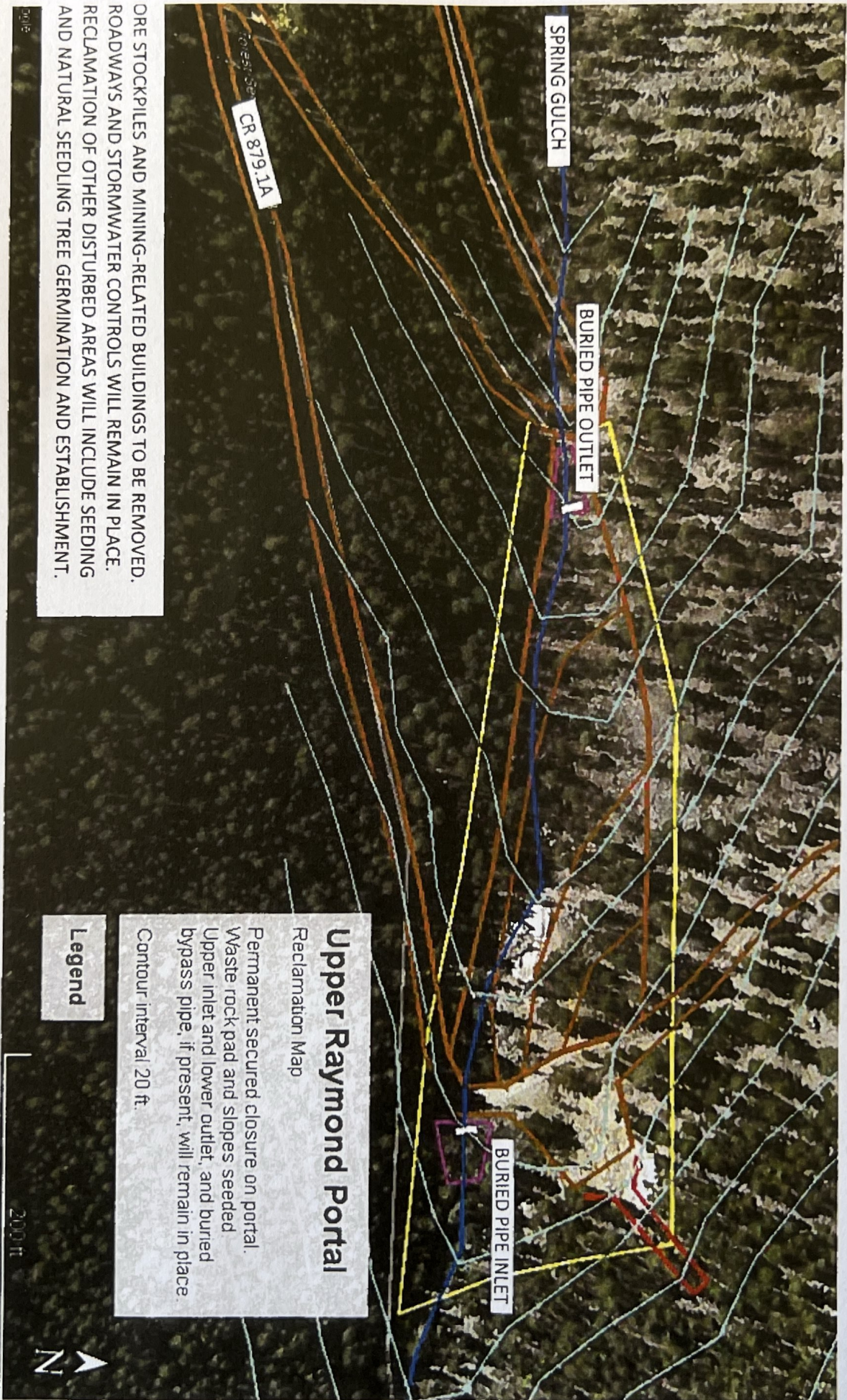
EXHIBIT E.7

2 of 5

Map prepared by Bob Oswald, High Country Consulting Services LLC

Bob Oswald

on 1/29/20 (date)

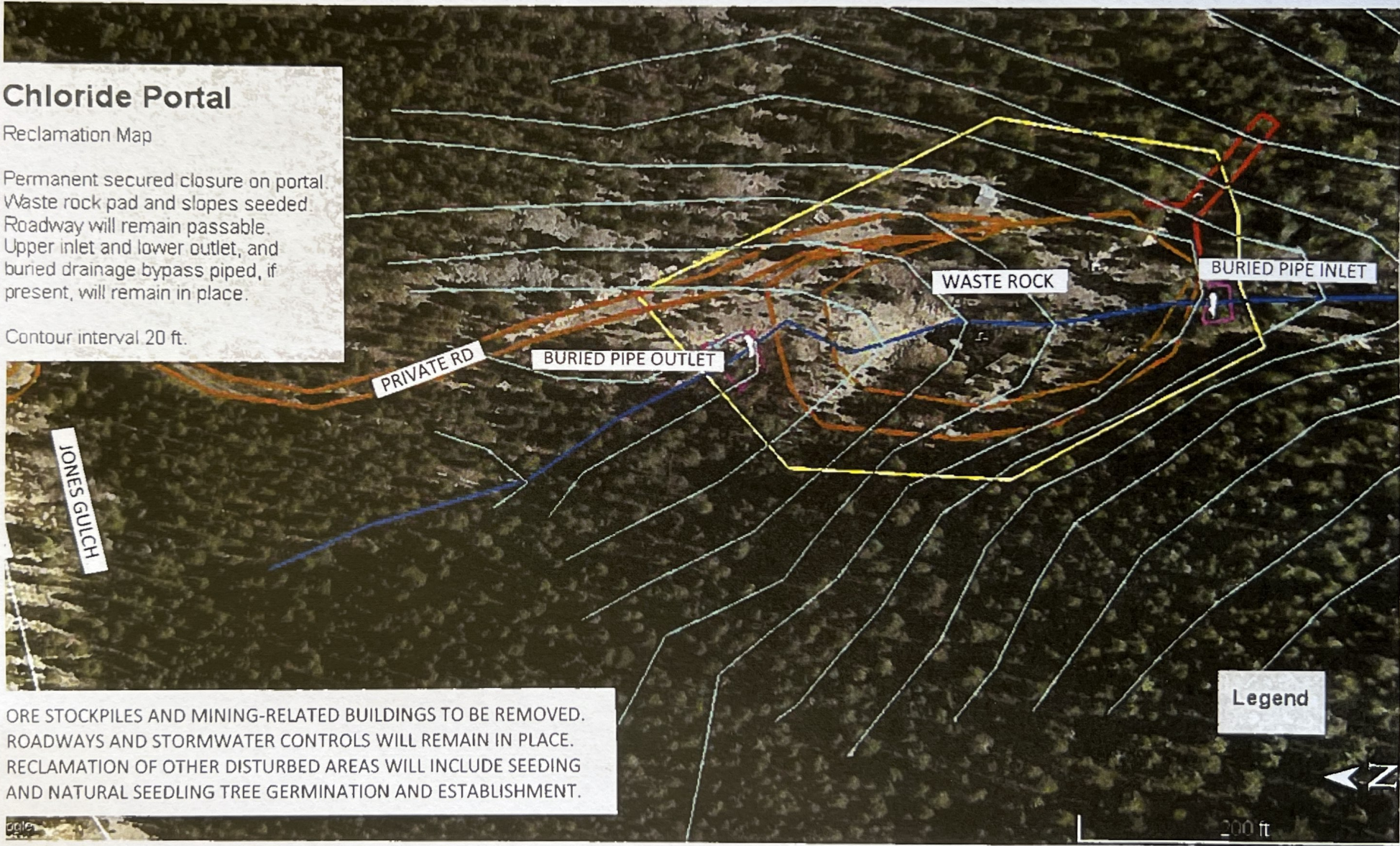


Chloride Portal

Reclamation Map

Permanent secured closure on portal.
Waste rock pad and slopes seeded.
Roadway will remain passable.
Upper inlet and lower outlet, and
buried drainage bypass piped, if
present, will remain in place.

Contour interval 20 ft.



ORE STOCKPILES AND MINING-RELATED BUILDINGS TO BE REMOVED.
ROADWAYS AND STORMWATER CONTROLS WILL REMAIN IN PLACE.
RECLAMATION OF OTHER DISTURBED AREAS WILL INCLUDE SEEDING
AND NATURAL SEEDLING TREE GERMINATION AND ESTABLISHMENT.

CHLORIDE PORTAL RECLAMATION MAP

EXHIBIT E.8

3 of 5

Map prepared by Bob Oswald, High Country Consulting Services LLC

Bob Oswald
on 1/29/20 (date)

Grand Prize Raise

Reclamation Map

Permanent secured closure on shaft.
Waste rock pad and slopes seeded.
Roadway will remain passable.

Contour interval 20 ft.



RAND PRIZE RAISE RECLAMATION MAP

EXHIBIT E.9

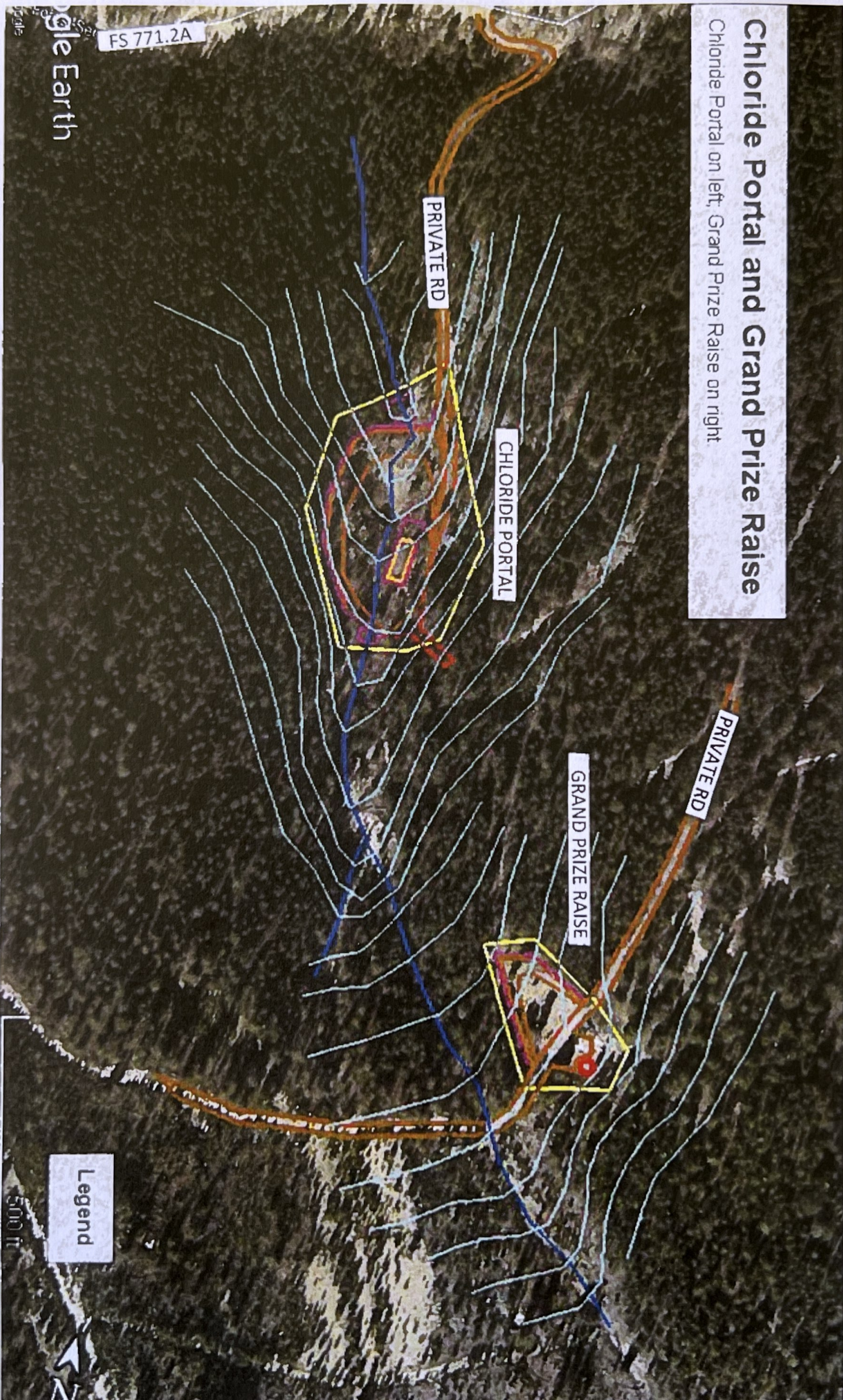
4 OF 5

Map prepared by Bob Oswald, High Country Consulting Services LLC

Bob Oswald
on 1/29/20 (date)

Chloride Portal and Grand Prize Raise

Chloride Portal on left, Grand Prize Raise on right.



Legend

500 ft