

LEGEND



← SITE



← MINING BOUNDARY /
EVERIST LEASE

USGS 7.5' Topographic Map
Fairplay East, CO 1956 (revised 1956)
Fairplay West, CO 1994 (revised 1996)

0 1,500
Approximate Scale in Feet



Pinyon
Environmental, Inc.

SITE LOCATION

Fairplay Facility
22254 Highway 285
Fairplay, Colorado

Site Location: Sections 2 and 3, Township 10S, Range 77W, 6th Principal Meridian

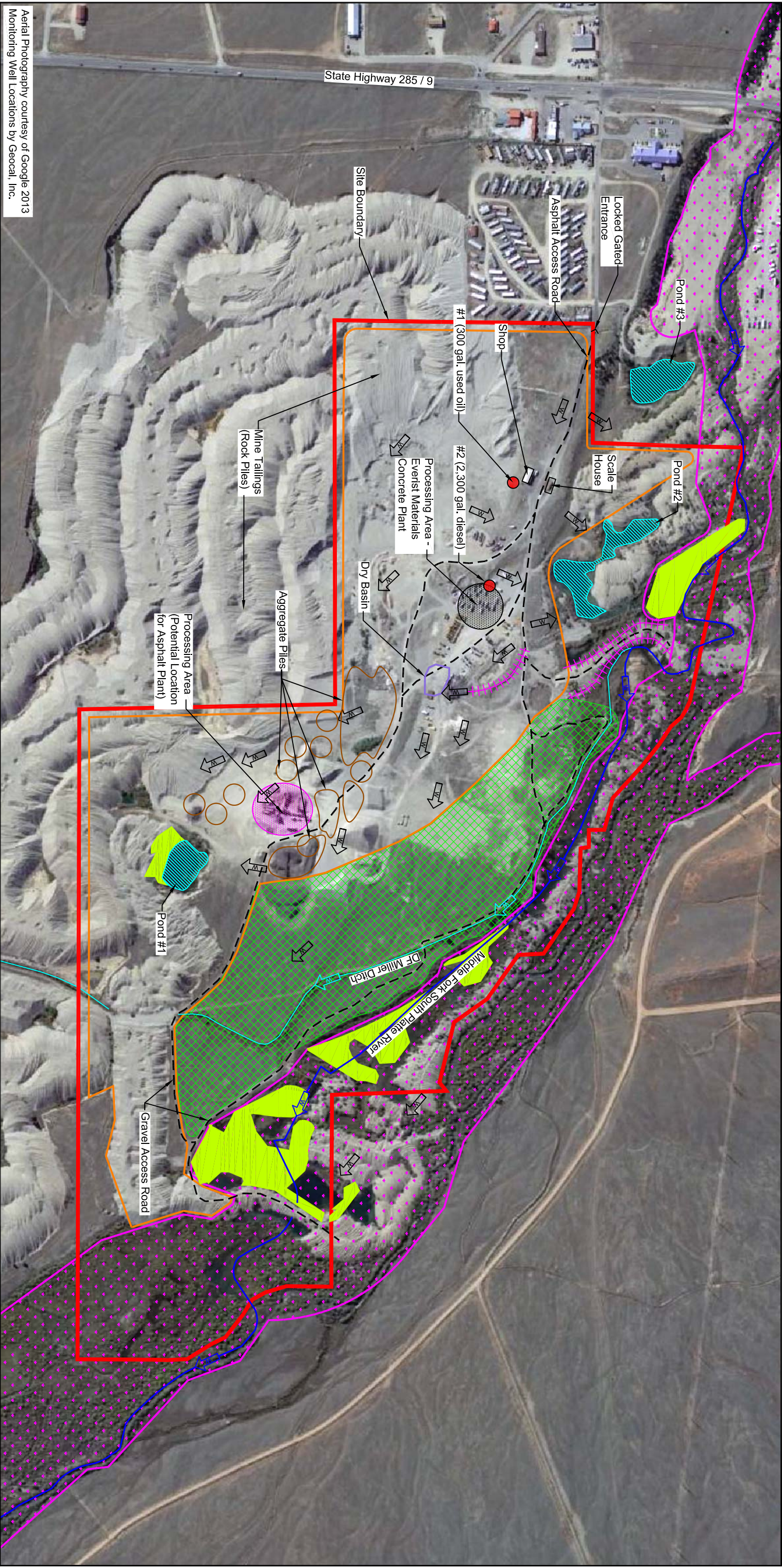
Drawn By: AMV

Figure 1

Pinyon Project Number: 1/08-320-01.6502

Reviewed By: CJR

Date: 12/02/2016



Aerial Photography courtesy of Google 2013
Monitoring Well Locations by Geocal, Inc.

Site Boundary - 217 Acres

Mining Boundary / Everist Lease - 144 Acres

Flood Plain Boundary

Emergent Wetland

Vegetative Buffer

Middle Fork South Platte River

DF Miller Ditch

Rock Berm

Asphalt Paved Access Road

Gravel Access Road

Directional Flow Arrow

Pond Location

Aggregate Piles

Aboveground Storage Tank (AST) Location

Potential Concrete Plant Location

Potential Concrete Plant Location

0

500

N

Pinyon

Fairplay Facility

22254 Highway 285

Fairplay, Colorado

Drawn By: AMV

Reviewed By: CJR

Figure 2

Date: 12/02/2016

Site Location: Sections 2 and 3, Township 10S, Range 77W, 6th Principal Meridian

Pinyon Project Number: 1/08-320-01.6502

Drawn By: AMV

Reviewed By: CJR

Figure 2

Date: 12/02/2016

\\PNN\ONT10\Company2\PROJECTS\2008\10032001 5 Facilities SPC\2016 Fairplay SWMP Update 2016\2016 Fairplay SWMP Figures\CAD\Fairplay\SWMP-V4.dwg