

2720 Ruby Vista Drive  
Suite 101  
Elko, Nevada 89801  
775.777.8003  
www.Linkan.com

**To:**

**Department of Natural Resources  
Division of Reclamation, Mining and Safety**

Attention:

**Peter Hays**

Re:

**Schwartzwalder WTP**

Job Number:

**25-US-0221**

**Field Service Report**

Site: Schwartzwalder Mine

Location: Golden, CO

Site Contact: Peter Hays

Date: 05/13/2025

Service Request Description: Transition at Startup / Plant Commissioning

**Description of Service**

- Measured MW-18: 168.0 ft
- Measured Jeffery Mine Shaft: 170.9 ft
- Patrick Delaney and Matt Sturrock (electrician) onsite.
- Completed Rad Training.
- Checked parts inventory.
- Found broken influent valve on the feed line to the plant.
- Ran comms cable from headframe to the plant.
- Installed surge protector.

**Equipment Used:**

**Signature**

*Bryant Acevedo*













**CAUTION**  
-- -- --  
AREA OR CONTAINER  
ON THIS PROPERTY  
MAY CONTAIN  
RADIOACTIVE MATERIAL



MINI

E

5X10





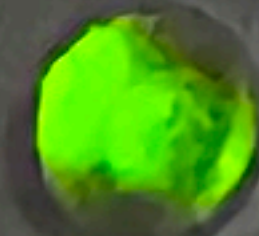
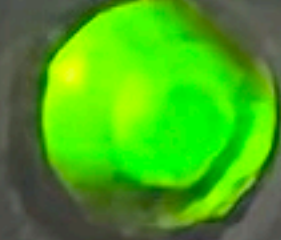
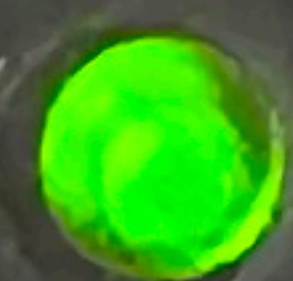


# Surgelogic Type SDSA4040

Surge Protective Device  
Dispositivo de Protección contra Sobretensiones Transitorias  
Dispositif de Protection contre les Surtensions Transitoires



OK



○ Replace / Sustituir / Remplacer

**SQUARE D**

by Schneider Electric



PANELBOARD / PANNEAU DE DISTRIBUTION / TABLERO DE ALUMBRADO / DISTRIBUCION

CAT. # / Nº DE CAT. / NO. DE CAT.	SER.	MAX. A.	MAX. VAC / VCA / V.	WIRE / FILS / HILOS
NF	NF442L2C	E1	250 600Y / 347 V~	3 4

16162

SEE MAIN BREAKER. IF USED, FOR AMPERE RATING, AUTOMATIC TRIP IS INDICATED BY HANDLE POSITION. MOVE TO OFF POSITION TO RESTORE SERVICE BY MOVING HANDLE TO OFF THEN ON. VOLEUR LE DISJONCTEUR PRINCIPAL, SI UTILISÉ, POUR OBTENIR LA VALEUR NOMINALE DE COURANT LE DISJONCTEUR AUTOMATIQUE EST INDICUÉ PAR LA POSITION INTERMÉDIAIRE DE LA MANIVELLE. DÉPLACER LA MANIVELLE À LA POSITION "OFF" POUR ARRÊTER LE SERVICE. POUR RESTAURER LE SERVICE, DÉPLACER LA MANIVELLE À LA POSITION "ON".

VERE IL INTERRUPTOR AUTOMATICO PRINCIPALE, SE SI UTILIZADA PARA OBTENER LA CONVENIENTE NOMINAL, EL DISPOSITIVO AUTOMATICO ES INDICADO POR LA POSICION INTERMEDIA DE LA MANIVELA. ENTRE "OFF" Y "ON", RESTAURELA EL SERVICIO MOVENDO LA MANIVELA A LA POSICION "OFF" Y LUEGO "ON".

80043-718-02



1  
2  
3  
4

5  
6  
7  
8

9  
10  
11  
12

13  
14  
15  
16

17  
18  
19  
20

21  
22  
23  
24

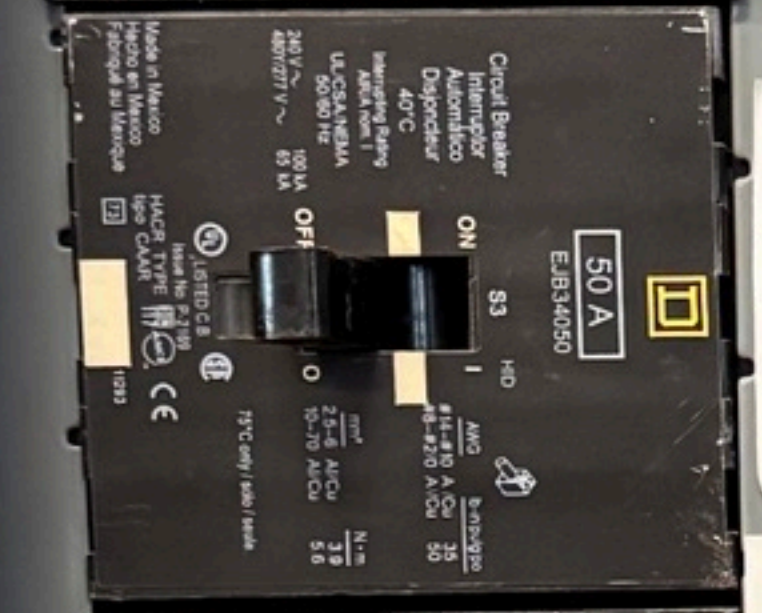
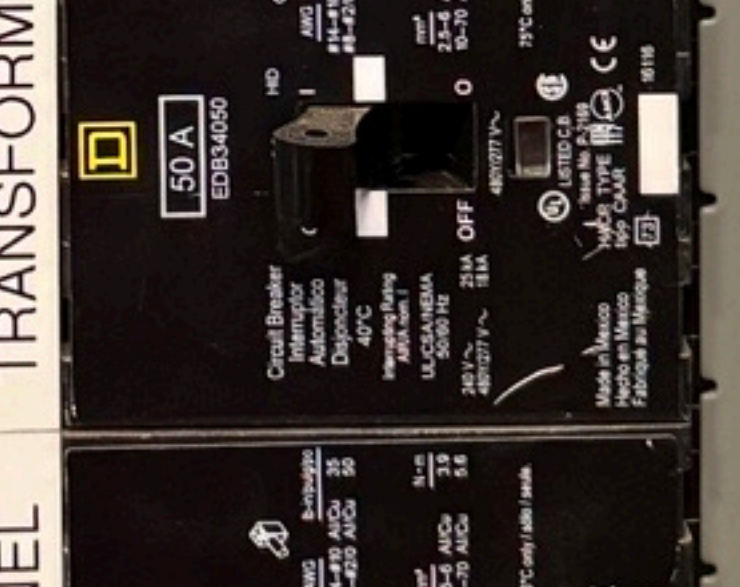
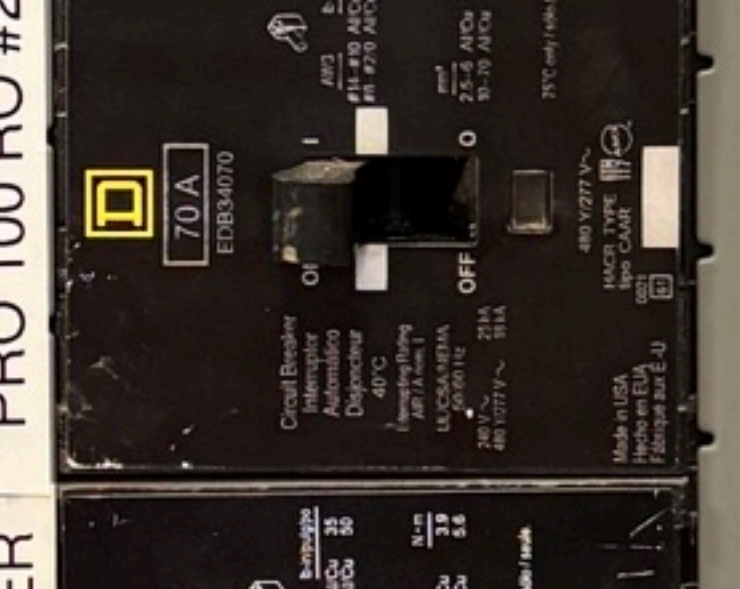
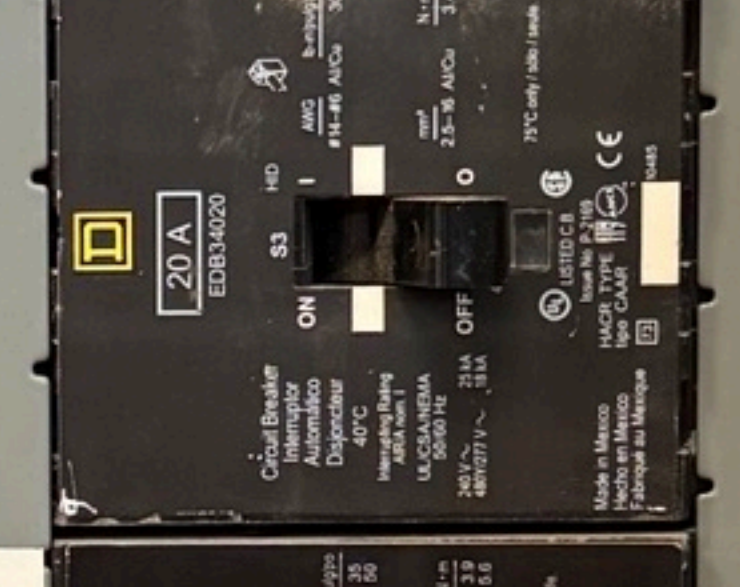
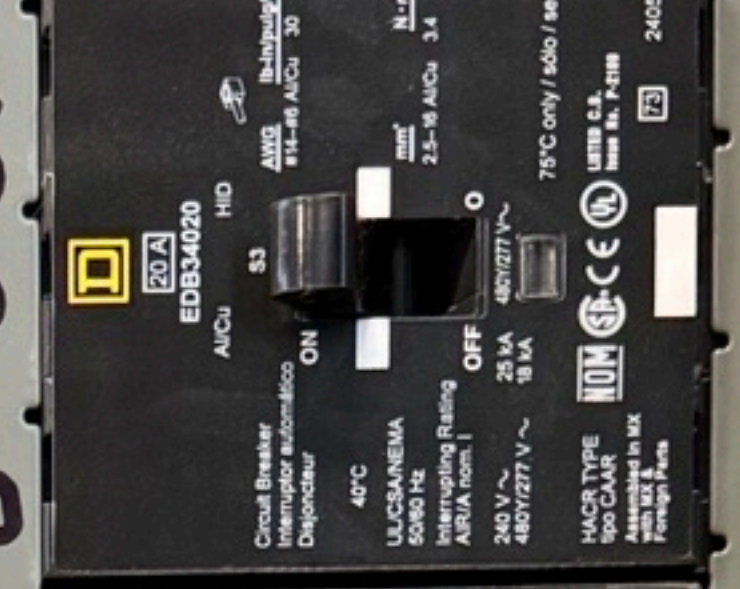
25  
26  
27  
28

29  
30  
31  
32

33  
34  
35  
36

37  
38  
39  
40

41  
42



25hp pump

60 HP PUMP

SUMP PUMP 1

RO BOOST PUMP

PRO 100 RO #1

BACKFILL PUMP

PRO 100 RO #2

TRANSFORMER

ADIT PANEL

**⚠ DANGER** HAZARD OF ELECTRIC SHOCK, EXPLOSION OR ARC FLASH. Read and follow all safety instructions. See NFPA 70E for more information. **⚠ PELIGRO** PELIGRO DE DESCARGA ELÉCTRICA, EXPLOSIÓN O ARQUEO POR CONTACTO. Lea y siga todas las instrucciones de seguridad. Consulte NFPA 70E para obtener más información. **⚠ DANGER** RISQUE D'ÉLECTROCUTION, D'EXPLOSION OU D'ARC FLASH. Lisez et suivez toutes les instructions de sécurité. Consultez NFPA 70E pour plus d'informations.





PANELBOARD / PANNEAU DE DISTRIBUTION / TABLERO DE ALUMBRADO / DISTRIBUCION

CAT. / N° DE CAT. / NO. DE CAT.	SER.	MAX. A.	MAX. VAC / VCA / V.	WIRE / FLS / MDS
NQ	NQ442L2C	225	240VAC-48VDC	3 4

16172

SEE MAIN BREAKER. IF USED, FOR AMPERE RATING. AUTOMATIC TRIP IS INDICATED BY HANDLE POSITION. MOVING BETWEEN ON AND OFF RESTORES SERVICE BY MOVING HANDLE TO OFF THEN ON.  
DE LA MANETTE ENTRE OFF ET ON PERMETTE LE COURANT EN REVENANT LA MANETTE A LA POSITION OFF. POUR ARRÊTER LE COURANT, DÉPLACER LA MANETTE ENTRE LA POSITION OFF ET ON. LE COURANT AUTOMATIQUEMENT EST INDICÉ PAR LA POSITION INTERMÉDIAIRE DE LA MANETTE ENTRE OFF ET ON. RESTAURER LE SERVICE EN DÉPLACANT LA MANETTE A LA POSITION ON (OFF ET ON).  
80043-719-02

**⚠ DANGER**

HAZARD OF ELECTRIC SHOCK, EXPLOSION OR ARC FLASH

- This equipment must only be installed and serviced by qualified electrical personnel.
- Turn off all power supplying this equipment before working on or inside equipment.
- Always use a properly rated voltage sensing device to confirm power is off.
- All unused spaces must be filled with blank face.
- Replace all covers, doors, and covers before turning on power to this equipment.

Failure to follow these instructions will result in death or serious injury.

**⚠ PELIGRO**

PELIGRO DE DESCARGA ELÉCTRICA, EXPLOSIÓN O DESTELLO POR ARQUEO

- Este equipo de protección personal (EPP) aprobado y está en conformidad con la seguridad eléctrica establecida por la Comisión Canadiense de Normas (CCNE).
- Siempre se debe utilizar el equipo de protección personal adecuado para el trabajo que se está realizando.
- Desconecte el equipo antes de realizar cualquier trabajo en él.
- Siempre utilice un dispositivo detector de tensión controlado adecuadamente para confirmar la desconexión del equipo.
- Antes de utilizar el equipo, asegure de haber leído y comprendido las instrucciones.
- Siempre asegure de utilizar el equipo de protección personal adecuado para el trabajo que se está realizando.
- Siempre asegure de utilizar el equipo de protección personal adecuado para el trabajo que se está realizando.

El uso de interruptores automáticos que no sean de Square D puede afectar negativamente la seguridad del usuario y deteriorar la confiabilidad del equipo. Square D no asume responsabilidad alguna por daños, lesiones o funcionamiento inadecuado del equipo causado por el uso o desperfectos de interruptores automáticos que no sean de Square D.

No permita que pinturas a base de petróleo, solventes o aceites en contacto con las partes no metálicas de este producto.

El uso de estos productos puede afectar negativamente la seguridad del usuario y deteriorar su confiabilidad.

**⚠ DANGER**

RISQUE D'ÉLECTROCUTION, D'EXPLOSION OU D'ÉCLAT D'ARC

- Cet équipement est conçu et vérifié par Square D à des niveaux de rendement supérieurs aux normes de l'Underwriters Laboratories (UL).
- L'utilisation de disjoncteurs autres que Square D peut affecter la sécurité de l'utilisateur et la fiabilité du matériel. Square D n'assume aucune responsabilité pour tout dommage, blessure ou dysfonctionnement résultant de l'utilisation ou de la défaillance de disjoncteurs autres que Square D.

Évitez que les peintures, les solvants ou les hydrocarbures à base de pétrole, les produits de nettoyage ou les produits non métalliques de ce produit.

L'utilisation de ces produits peut réduire la sécurité de l'utilisateur et compromettre la fiabilité.

80043-719-02









EANTEK SCHEDULE 40 RIGID PVC NONMETALLIC CONDUIT INTERTEK LISTED 310





THIS  
EQUIPMENT  
SHOULD  
NOT BE  
REMOVED  
OR  
REPLACED  
WITHOUT  
NOTIFYING  
THE  
UTILITY  
COMPANY







192019  
REV A  
MRG 053479-001

BUZZER

BATTERY

SLOT1

SLOT2

SLOT3

SLOT4

P/N 191910 SENSOR INPUT(2)				
TBxA - SENSOR 1				
TBxB - SENSOR 2				
TB	Ch	ECOND	CCOND	pH/ORP DIS
1	1,2	RCV+		
2		RCV-		
3				+5V
4				-5V
5		XMT+	XMT	
6		XMT-		
7			RCV	
8		R-SHLD		IN+
9		TEMP+	TEMP+	TEMP+
10		TEMP-	TEMP-	TEMP-
11		X-SHLD	SHIELD	SHIELD
12				
13-18				

P/N 191914 4-20 mA INPUT (6)					
TBxA - INPUTS 1-3					
TBxB - INPUTS 4-6					
TB	Ch	2 Wire Loop	2 Wire Pwr	3 Wire	4 Wire
1	1,4		XMTR-		XMTR-
2		XMTR-	XMTR+	XMTR+	XMTR+
3		+24V		+24V	+24V
4				COM(-)	24V(-)
5	2,5		XMTR-		XMTR-
6		XMTR-	XMTR+		+24V
7		+24V			
8				COM(-)	24V(-)
9	3,6		XMTR-	XMTR+	XMTR+
10		XMTR-	XMTR+	XMTR+	XMTR+
11		+24V		+24V	+24V
12				COM(-)	24V(-)
13-18					

P/N 191914 4-20 mA INPUT (6)					
TBxA - INPUTS 1-3					
TBxB - INPUTS 4-6					
TB	Ch	2 Wire Loop	2 Wire Pwr	3 Wire	4 Wire
1	1,4		XMTR-		XMTR-
2		XMTR-	XMTR+	XMTR+	XMTR+
3		+24V		+24V	+24V
4				COM(-)	24V(-)
5	2,5		XMTR-	XMTR+	XMTR+
6		XMTR-	XMTR+		+24V
7		+24V			
8				COM(-)	24V(-)
9	3,6		XMTR-	XMTR+	XMTR+
10		XMTR-	XMTR+	XMTR+	XMTR+
11		+24V		+24V	+24V
12				COM(-)	24V(-)
13-18					

P/N 191918 4-20 mA INPUT (3)/OUTPUT (4)							
TBxA - INPUT 1, OUTPUTS 1-2							
TBxB - INPUT 2, OUTPUTS 3-4							
TB	Ch	2 Wire Loop	2 Wire Pwr	3 Wire	4 Wire	4-20 mA Output	
1	1,2		XMTR-		XMTR-		
2		XMTR-	XMTR+	XMTR+	XMTR+		
3		+24V		+24V	+24V		
4				COM(-)	24V(-)		
5	1,3					OUT	
6							
7		Out					
8						OUT-	
9	2,4					OUT+	
10							
11							
12							
13-18							

TB

TB2

TB4











**SWO Broken Valve on Feed Line**

2 messages

**Chris Prosper** <chris.prosper@linkan.com>

Tue, May 13, 2025 at 12:50 PM

To: Peter Hays - DNR &lt;peter.hays@state.co.us&gt;

Cc: Adam Billin &lt;Adam.Billin@linkan.com&gt;, Brandy Wadford &lt;brandy.wadford@linkan.com&gt;, Jared Buck &lt;jared.buck@linkan.com&gt;, Quinn Westmoreland &lt;quinn.westmoreland@linkan.com&gt;, Bryant Acevedo &lt;bryant.acevedo@linkan.com&gt;, "pdelaney@blackfoxmining.com" &lt;pdelaney@blackfoxmining.com&gt;

Hello Peter,

I just wanted to let you know that we noticed an influent valve was broken on the feed line to the plant while doing work at site today (pictures below). We plan to remove the valve completely and put a 4" SS threaded flange and pull the hose to it and connect it to the backing ring on the other side. We will purchase the flange from the maintenance budget, and we will make the change only once after the amendment to the license comes through.



We would be happy to show you the break in person tomorrow during your site inspection.

Please let me know if you have any questions.

Thanks,

**Chris Prosper**

Engineer





Office: 775-777-8003

Cell: 719-247-0564

400 Corporate Circle • Suite H

Golden, Colorado 80401

*An Employee-Owned Company*

linkan.com • chris.prosper@linkan.com

PLEASE NOTE: This message, including the attachments, may include privileged, confidential and/or inside information. Any distribution or use of this communication by anyone other than the intended recipient is strictly prohibited and may be unlawful. If you are not the intended recipient, please notify the sender by replying to this message and then delete it from your system.

---

**Hays - DNR, Peter** <peter.hays@state.co.us>

To: Chris Prosper <chris.prosper@linkan.com>

Cc: Adam Billin <Adam.Billin@linkan.com>, Brandy Wadford <brandy.wadford@linkan.com>, Jared Buck <jared.buck@linkan.com>, Quinn Westmoreland <quinn.westmoreland@linkan.com>, Bryant Acevedo <bryant.acevedo@linkan.com>, "pdelaney@blackfoxmining.com" <pdelaney@blackfoxmining.com>

Tue, May 13, 2025 at 2:42 PM

Chris,

Thanks for the update. Yes, let's look at the valve tomorrow during my visit.

Peter Hays  
Project Manager  
Inactive Mine Reclamation Program



**COLORADO**  
Division of Reclamation,  
Mining and Safety  
Department of Natural Resources

**I am working remotely and can be reached at 720.786.0024.**

C 720.786.0024 | P 303.866.3567 Ext. 8124 | F 303.832.8106

Physical - 1313 Sherman St., Room 215, Denver, CO 80203

Mailing - 1001 E 62nd Ave., Denver, CO 80216

[peter.hays@state.co.us](mailto:peter.hays@state.co.us) | <https://drms.colorado.gov>

[Quoted text hidden]







