

EXHIBIT - C - PRE-MINING AND MINING PLAN MAP

PART OF SECTION 22, TOWNSHIP 4 NORTH, RANGE 68 WEST OF THE 6TH PRIME MERIDIAN  
COUNTY OF WELD, STATE OF COLORADO

NOTES:

1. LIMITS OF PERMIT BOUNDARY NOT TO EXCEED 30 ACRES.
2. PGM TO BE PLACED IN STOCKPILE, WILL BE USED FOR RECLAMATION OF SITE.
3. AFFECTED AREA REPRESENT THE SITE AFTER THE COMPLETION OF RECLAMATION ACTIVITIES
4. ALL RECLAIMED SLOPES WILL BE 3'H:1'V, OR LESS.
5. THERE ARE NO NAMED CREEKS OR BUILDINGS WITHIN 200 FEET OF THE EXSTING AND PROPOSED AFFECTED AREA.
6. THE OWNER OF THE SURFACE AREA AND SUBSTANCE TO BE MINED IS MILE 250, LLC.

DATA:

1. BORROW VOLUME = 692,370 CUBIC YARDS ±
2. STOCKPILED PGM MATERIAL = ~4,000 CUBIC YARDS ±
3. STOCKPILE AREA = 130,733 SQUARE FEET OR 2.99 ACRES ±
4. AFFECTED LAND AREA = 547,856 SQUARE FEET OR 12.58 ACRES ±

MINE PARCEL PERMIT BOUNDARY

BEGINNING IN THE SOUTHEAST CORNER;

THENCE N 90°00'00" W, A DISTANCE OF 139.50 FEET TO A POINT;  
THENCE S 00°00'00" E, A DISTANCE OF 167.00 FEET TO A POINT;  
THENCE S 84°34'19" W, A DISTANCE OF 356.89 FEET TO A POINT;  
THENCE S 88°09'15" W, A DISTANCE OF 615.00 FEET TO A POINT;  
THENCE N 63°23'51" W, A DISTANCE OF 114.44 FEET TO A POINT;  
THENCE N 36°01'08" W, A DISTANCE OF 133.61 FEET TO A POINT;  
THENCE N 01°59'58" W, A DISTANCE OF 24.98 FEET TO A POINT;  
THENCE S 88°48'43" W, A DISTANCE OF 33.50 FEET TO A POINT;  
THENCE N 01°11'17" W, A DISTANCE OF 116.11 FEET TO A POINT;  
THENCE N 26°11'12" E, A DISTANCE OF 418.51 FEET TO A POINT;  
THENCE N 45°25'30" E, A DISTANCE OF 548.95 FEET TO A POINT;  
THENCE N 89°57'13" E, A DISTANCE OF 750.96 FEET TO A POINT;  
THENCE S 00°01'50" E, A DISTANCE OF 840.53 FEET TO THE POINT OF BEGINNING.

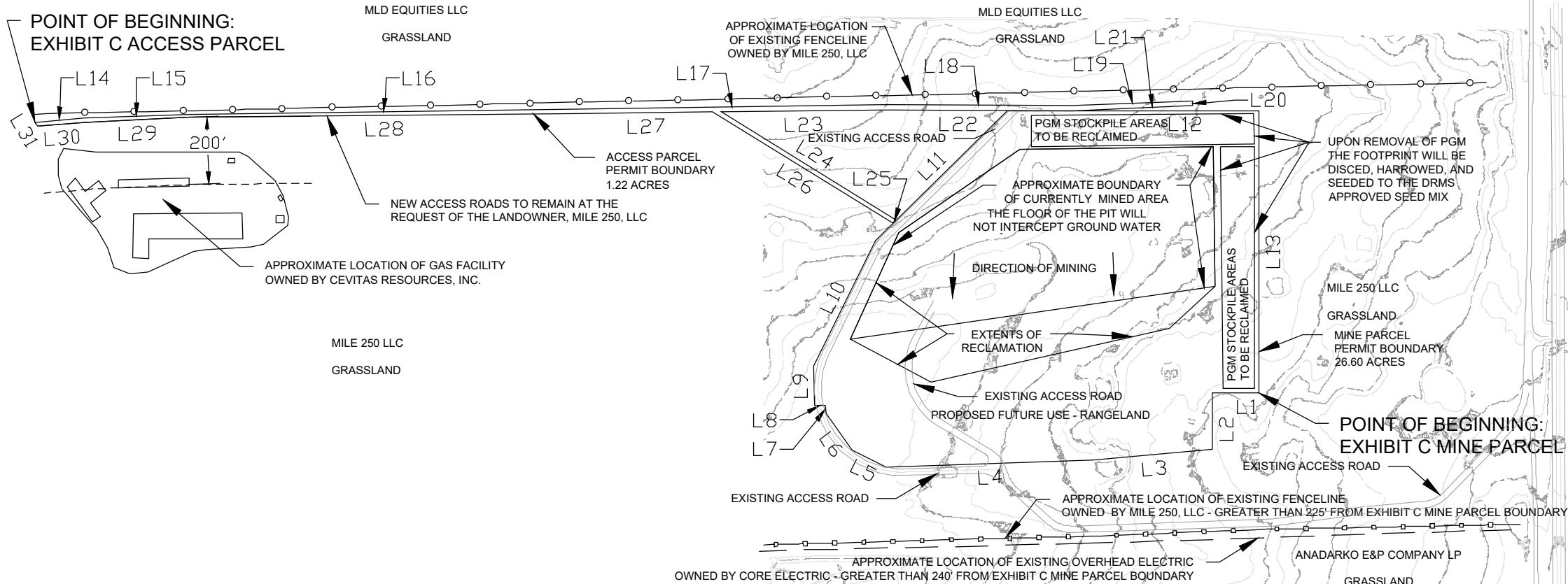
PARCEL CONTAINS AN AREA OF 1,158,617 SQUARE FEET OR 26.60 ACRES, MORE OR LESS.

ACCESS PARCEL PERMIT BOUNDARY

BEGINNING IN THE NORTHEAST CORNER;

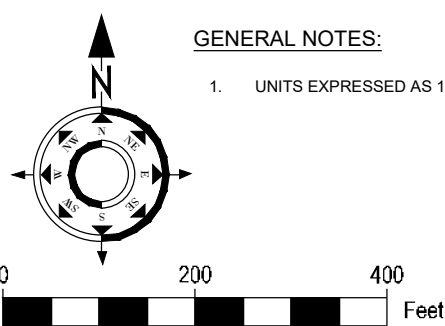
THENCE N 85°10'58" E, A DISTANCE OF 143.54 FEET TO A POINT;  
THENCE N 87°54'10" E, A DISTANCE OF 315.59 FEET TO A POINT;  
THENCE N 89°13'03" E, A DISTANCE OF 1159.55 FEET TO A POINT;  
THENCE N 89°11'33" E, A DISTANCE OF 911.40 FEET TO A POINT;  
THENCE S 89°39'30" E, A DISTANCE OF 557.83 FEET TO A POINT;  
THENCE N 87°53'41" E, A DISTANCE OF 358.49 FEET TO A POINT;  
THENCE S 00°04'13" E, A DISTANCE OF 12.89 FEET TO A POINT;  
THENCE S 87°33'52" W, A DISTANCE OF 358.44 FEET TO A POINT;  
THENCE N 89°42'29" W, A DISTANCE OF 557.61 FEET TO A POINT;  
THENCE S 89°13'41" W, A DISTANCE OF 487.78 FEET TO A POINT;  
THENCE S 58°23'20" E, A DISTANCE OF 611.77 FEET TO A POINT;  
THENCE S 45°25'30" W, A DISTANCE OF 14.32 FEET TO A POINT;  
THENCE N 58°18'18" W, A DISTANCE OF 630.12 FEET TO A POINT;  
THENCE S 89°23'01" W, A DISTANCE OF 398.80 FEET TO A POINT;  
THENCE S 89°24'43" W, A DISTANCE OF 1159.61 FEET TO A POINT;  
THENCE S 87°23'07" W, A DISTANCE OF 314.13 FEET TO A POINT;  
THENCE S 84°50'03" W, A DISTANCE OF 137.92 FEET TO A POINT;  
THENCE N 29°30'03" W, A DISTANCE OF 14.15 FEET TO THE POINT OF BEGINNING.

PARCEL CONTAINS AN AREA OF 53,133 SQUARE FEET OR 1.22 ACRES, MORE OR LESS.



Line Table		
Line #	Direction	Length
L1	N90° 00' 00"W	139.50
L2	S00° 00' 00"E	167.00
L3	S84° 34' 19"W	356.89
L4	S88° 09' 15"W	615.00
L5	N63° 23' 51"W	114.44
L6	N36° 01' 08"W	133.61
L7	N01° 59' 58"W	24.98
L8	S88° 48' 43"W	33.50
L9	N01° 11' 17"W	116.11
L10	N26° 11' 12"E	418.51
L11	N45° 25' 30"E	548.95
L12	N89° 57' 13"E	750.96
L13	S00° 01' 50"E	840.53
L14	N85° 10' 58"E	143.54
L15	N87° 54' 10"E	315.59
L16	N89° 13' 03"E	1159.55

Line Table		
Line #	Direction	Length
L17	N89° 11' 33"E	911.40
L18	S89° 39' 30"E	557.83
L19	N87° 53' 41"E	358.49
L20	S00° 04' 13"E	12.89
L21	S87° 33' 52"W	358.44
L22	N89° 42' 29"W	557.61
L23	S89° 13' 41"W	487.78
L24	S58° 23' 20"E	611.77
L25	S45° 25' 30"W	14.32
L26	N58° 18' 18"W	630.12
L27	S89° 23' 01"W	398.80
L28	S89° 24' 43"W	1159.61
L29	S87° 23' 07"W	314.13
L30	S84° 50' 03"W	137.92
L31	N29° 30' 03"W	14.15



GENERAL NOTES:

1. UNITS EXPRESSED AS 1 FOOT=<sup>1200</sup>/<sub>3937</sub> METERS.

THESE MINING PLANS WERE PREPARED BY ME (OR UNDER MY DIRECT SUPERVISION) IN ACCORDANCE WITH THE REQUIREMENTS OF THE COLORADO DIVISION OF RECLAMATION MINING & SAFETY

TBD

DATE

REVISIONS

NO.	BY	DATE	DESCRIPTION
1	SLE	12/15/2021	GRADING PLAN #1
Contact:			SEMA Construction Inc.
Address:			303-627-2600
Phone:			Centennial, CO 80112

EXHIBIT - F - RECLAMATION PLAN MAP

PART OF SECTION 22, TOWNSHIP 4 NORTH, RANGE 68 WEST OF THE 6TH PRIME MERIDIAN  
COUNTY OF WELD, STATE OF COLORADO

AFFECTED AREA:

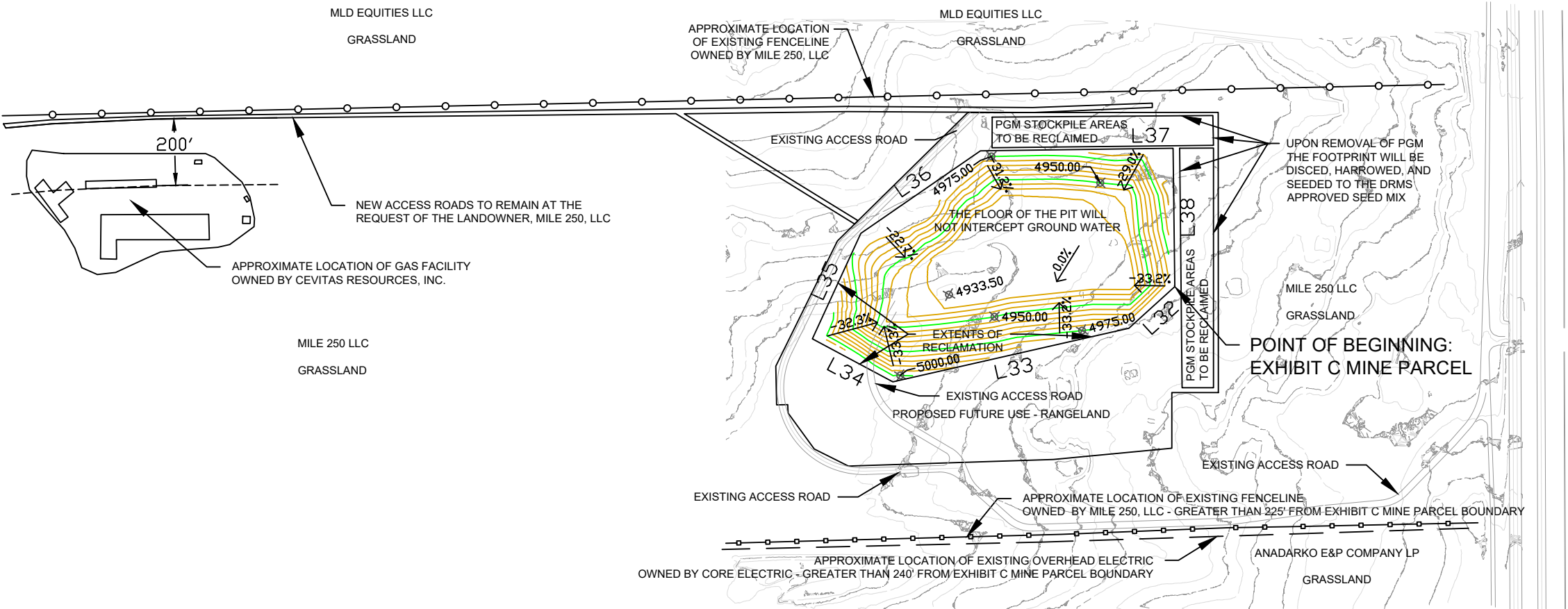
BEGINNING IN THE SOUTHEAST CORNER;

THENCE S 47°47'57" W, A DISTANCE OF 186.10 FEET TO A POINT;  
THENCE S 77°12'21" W, A DISTANCE OF 725.71 FEET TO A POINT;  
THENCE N 61°52'16" W, A DISTANCE OF 273.64 FEET TO A POINT;  
THENCE N 24°39'41" E, A DISTANCE OF 348.23 FEET TO A POINT;  
THENCE N 55°23'13" E, A DISTANCE OF 435.78 FEET TO A POINT;  
THENCE N 89°13'56" E, A DISTANCE OF 577.78 FEET TO A POINT;  
THENCE S 00°42'59" E, A DISTANCE OF 415.07 FEET TO THE POINT OF BEGINNING;

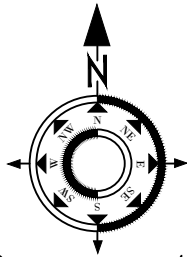
PARCEL CONTAINS AN AREA OF 547,858 SQUARE FEET OR 12.58 ACRES, MORE OR LESS.

NOTES:

- 1. LIMITS OF PERMIT BOUNDARY NOT TO EXCEED 30 ACRES.
- 2. PGM TO BE PLACED IN STOCKPILE, WILL BE USED FOR RECLAMATION OF SITE.
- 3. AFFECTED AREA REPRESENT THE SITE AFTER THE COMPLETION OF RECLAMATION ACTIVITIES
- 4. THE OPERATION IS NOT EXPECTED TO AFFECT SURFACE OR GROUNDWATER SYSTEMS.
- 5. ALL RECLAIMED SLOPES SHALL BE CONSTRUCTED AT 3H:1V.
- 6. ALL AFFECTED AREAS WITH THE EXCEPTION OF THE ACCESS ROADS WILL BE SEEDED WITH THE DRMS APPROVED SEED MIX. NO SHRUBS OR TREES ARE PROPOSED AS PART OF THE RECLAMATION PLAN.
- 7. NO OVERBURDEN REPLACEMENT IS PROPOSED.
- 8. THE AVERAGE THICKNESS OF THE REPLACEMENT PLANT GROWTH MATERIAL WILL BE APPROXIMATELY 3-4 INCHES. THE UNDERLYING UNAFFECTED SUBSOIL, ALONG WITH THE REPLACED PGM WILL BE ADEQUATE FOR VEGETATION ESTABLISHMENTS.

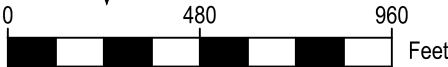


Line Table		
Line #	Direction	Length
L32	S47° 47' 57"W	186.10
L33	S77° 12' 21"W	725.71
L34	N61° 52' 16"W	273.64
L35	N24° 39' 41"E	348.23
L36	N55° 23' 13"E	435.78
L37	N89° 13' 56"E	577.78
L38	S00° 42' 59"E	415.07



GENERAL NOTES:

- 1. UNITS EXPRESSED AS 1 FOOT=39.37 METERS.



THESE CONSTRUCTION PLANS WERE PREPARED BY ME (OR UNDER MY DIRECT SUPERVISION) IN ACCORDANCE WITH THE REQUIREMENTS OF THE COLORADO DIVISION OF RECLAMATION MINING & SAFETY

TBD

DATE

REVISIONS

NO.	BY	DATE	DESCRIPTION
1	SLE	12/5/2021	GRADING PLAN #1

Contact: SEMA Construction Inc.  
Address: 303-627-2600  
Phone: Centennial, CO 80112