



STATE OF
COLORADO

Simmons - DNR, Leigh <leigh.simmons@state.co.us>

C1980007, West Elk Mine, April Inspection Report

Simmons - DNR, Leigh <leigh.simmons@state.co.us>
To: "Munz, Robert" <RobertMunz@coreresources.com>

Mon, May 5, 2025 at 5:05 PM

Attached

Leigh Simmons
Environmental Protection Specialist



COLORADO
Division of Reclamation,
Mining and Safety
Department of Natural Resources

P [720.220.1180](tel:720.220.1180)

1313 Sherman Street, Room 215, Denver, CO 80203

leigh.simmons@state.co.us | <https://drms.colorado.gov>




INSP-REPORTC_C1980007_LDS_05052025045150.pdf
3328K



PERMIT INFORMATION

Permit Number: C-1980-007 Mine Name: West Elk Mine Operator: Mountain Coal Company, LLC Operator Address: Robert Munz 5174 Highway 133 Somerset, CO 81434	County: Delta, Gunnison Operation Type: Underground Permit Status: Active Ownership: Private
	Operator Representative Present: Chase Hiatt
Operator Representative Signature: (Field Issuance Only) 	

INSPECTION INFORMATION

Inspection Start Date: April 25, 2025 Inspection Start Time: 09:00 Inspection End Date: Inspection End Time:	Inspection Type: Coal Partial Inspection Inspection Reason: Normal I&E Program Weather: Clear
Joint Inspection Agency: None	Joint Inspection Contacts:
Post Inspection Agency: None	Post Inspection Contacts:
Inspector(s): Leigh Simmons	Inspector's Signature:  Signature Date: May 5, 2025

Inspection Topic Summary

NOTE: Y=Inspected N=Not Inspected R=Comments Noted V=Violation Issued NA=Not Applicable

Y - Air Resource Protection

N - Availability of Records

N - Backfill & Grading

N - Excess Spoil and Dev. Waste

N - Explosives

N - Fish & Wildlife

R - Hydrologic Balance

R - Gen. Compliance With Mine Plan

N - Other

R - Processing Waste

Y - Roads

N - Reclamation Success

R - Revegetation

N - Subsidence

N - Slides and Other Damage

R - Support Facilities On-site

Y - Signs and Markers

N - Support Facilities Not On-site

N - Special Categories Of Mining

Y - Topsoil

COMMENTS

This was a partial inspection by Leigh Simmons of the Division of Reclamation, Mining and Safety (Division). The weather was fine and dry. The mine was active. The inspection was accompanied by Chase Hiatt of Mountain Coal Company (MCC).

HYDROLOGIC BALANCE - Rule 4.05

Drainage Control 4.05.1, 4.05.2, 4.05.3; Siltation Structures 4.05.5, 4.05.6; Discharge Structures 4.05.7, 4.05.10; Diversions 4.05.4; Effluent Limits 4.05.2; Ground Water Monitoring 4.05.13; Surface Water Monitoring 4.05.13; Drainage – Acid and Toxic Materials 4.05.8; Impoundments 4.05.6, 4.05.9; Stream Buffer Zones 4.05.18:

Routine ditch cleaning was in progress along the road to the Sylvester Gulch facilities. In general ditches and culverts around the facilities areas were well maintained.

GENERAL MINE PLAN COMPLIANCE:

Longwall mining of the LWE16 panel was in progress, at around cross cut 8 on the head gate. Three development crews were working: in the B26 tail gate at around cross-cut 38, in the B26 head gate as far as the start line, and in the B27 head gate at around cross-cut 33. Contractors with Phoenix Mining continued to work on pillaring of the Sunset Mains, the job was nearing completion.

PROCESSING WASTE/COAL MINE WASTE PILES – Rule 4.10 and 4.11

Drainage Control; Surface Stabilization; Placement:

The wash plant had been running for about a week and a half to wash coal from the longwall, where a fault had been encountered in panel LWE16. Processing waste was being transported to the RPEE where it was spread with a dozer. Haul trucks were being used for preliminary compaction, and a sheep's foot compactor was also working.

Waste from the temporary pile on the RPE was also being transported to the RPEE.

The surface of the RPEE was in good shape, with drainage to the north west corner. The reclaimed outcrops were also in good shape, however a few sections of straw wattle should be re-staked.

Number of Partial Inspection this Fiscal Year: 7

Number of Complete Inspections this Fiscal Year: 3

REVEGETATION – Rule 4.15**Vegetative Cover; Timing:**

MCC continued to retain Pest Away for weed control around the permit area. Treatment of weeds had not yet begun for the season.

SUPPORT FACILITIES - Rule 4.04:

At the Deer Creek vent shaft a laser device had been installed in order to better characterize the gases emitted from the shaft and assess the potential for greenhouse gas mitigation. The pad was stable and in good condition behind two layers of chain link fence and locked gates.

Work had not yet begun on the surface water treatment structures at the load out.

DOCUMENTS RECEIVED

N/A

OTHER (SPECIFY)

N/A

ENFORCEMENT ACTIONS/COMPLIANCE

No enforcement actions were initiated as a result of this inspection, nor are any pending.

Number of Partial Inspection this Fiscal Year: 7

Number of Complete Inspections this Fiscal Year: 3

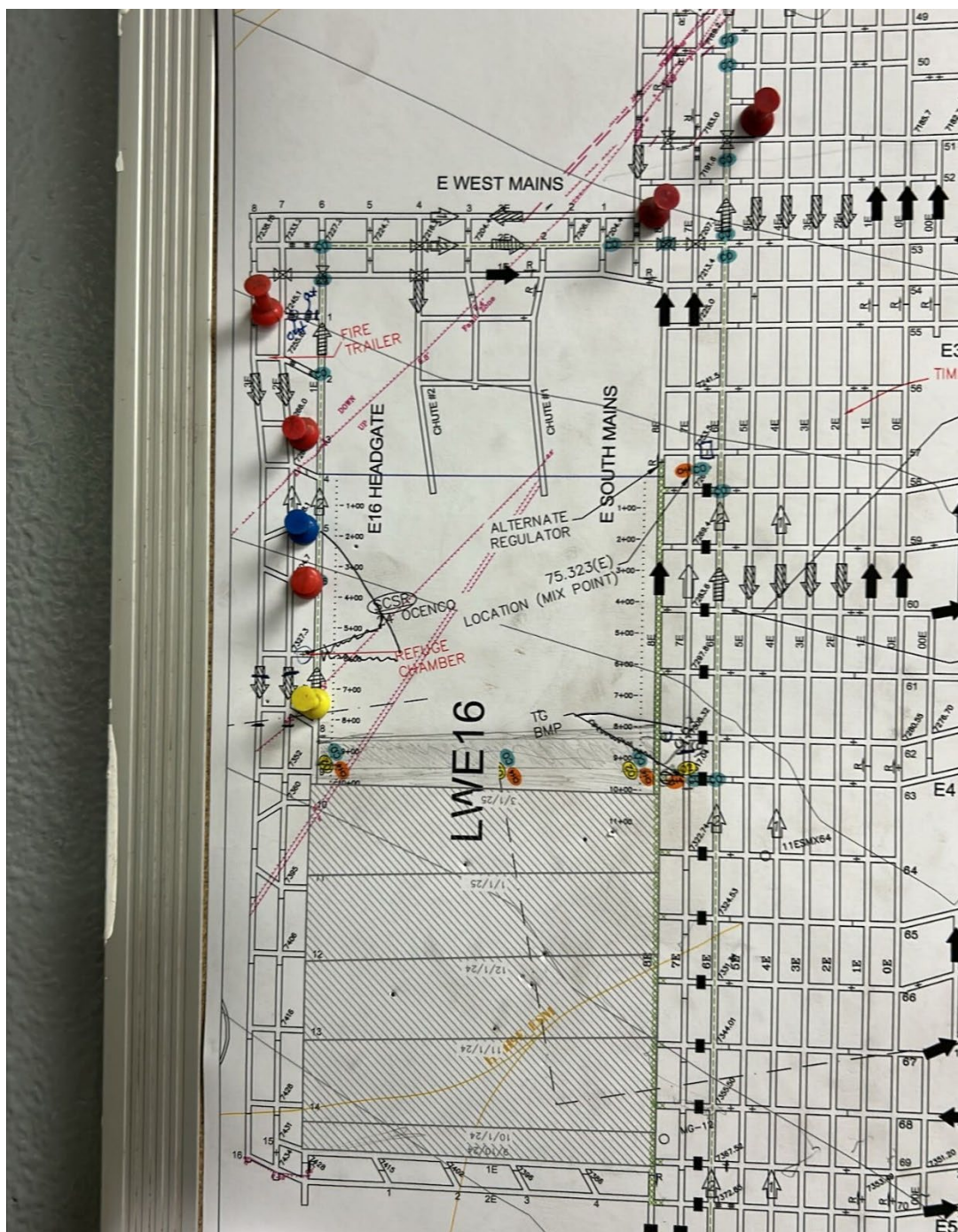
PHOTOGRAPHS

Figure 1: Mine map showing longwall progress in LWE16

Number of Partial Inspection this Fiscal Year: 7

Number of Complete Inspections this Fiscal Year: 3

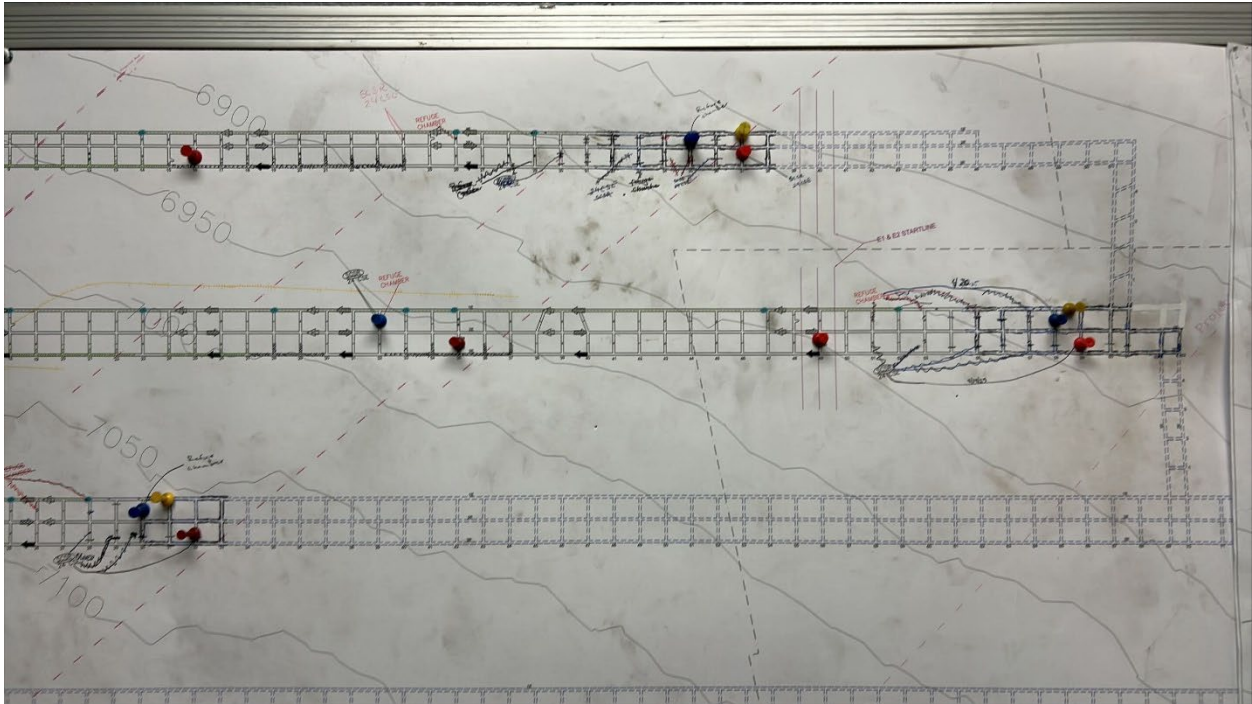


Figure 2: Mine map showing development progress in B-seam panels



Figure 3: Mine map showing pillaring progress

Number of Partial Inspection this Fiscal Year: 7

Number of Complete Inspections this Fiscal Year: 3



Figure 4: Laser instrument installed at Deer Creek vent shaft



Figure 5: RPEE

Number of Partial Inspection this Fiscal Year: 7

Number of Complete Inspections this Fiscal Year: 3



Figure 6: RPEE, showing preliminary compaction with haul truck



Figure 7: Sheep's foot compactor

Number of Partial Inspection this Fiscal Year: 7

Number of Complete Inspections this Fiscal Year: 3



Figure 8: RPEE outslope, showing straw wattles



Figure 9: Temporary waste pile on RPE

Number of Partial Inspection this Fiscal Year: 7

Number of Complete Inspections this Fiscal Year: 3