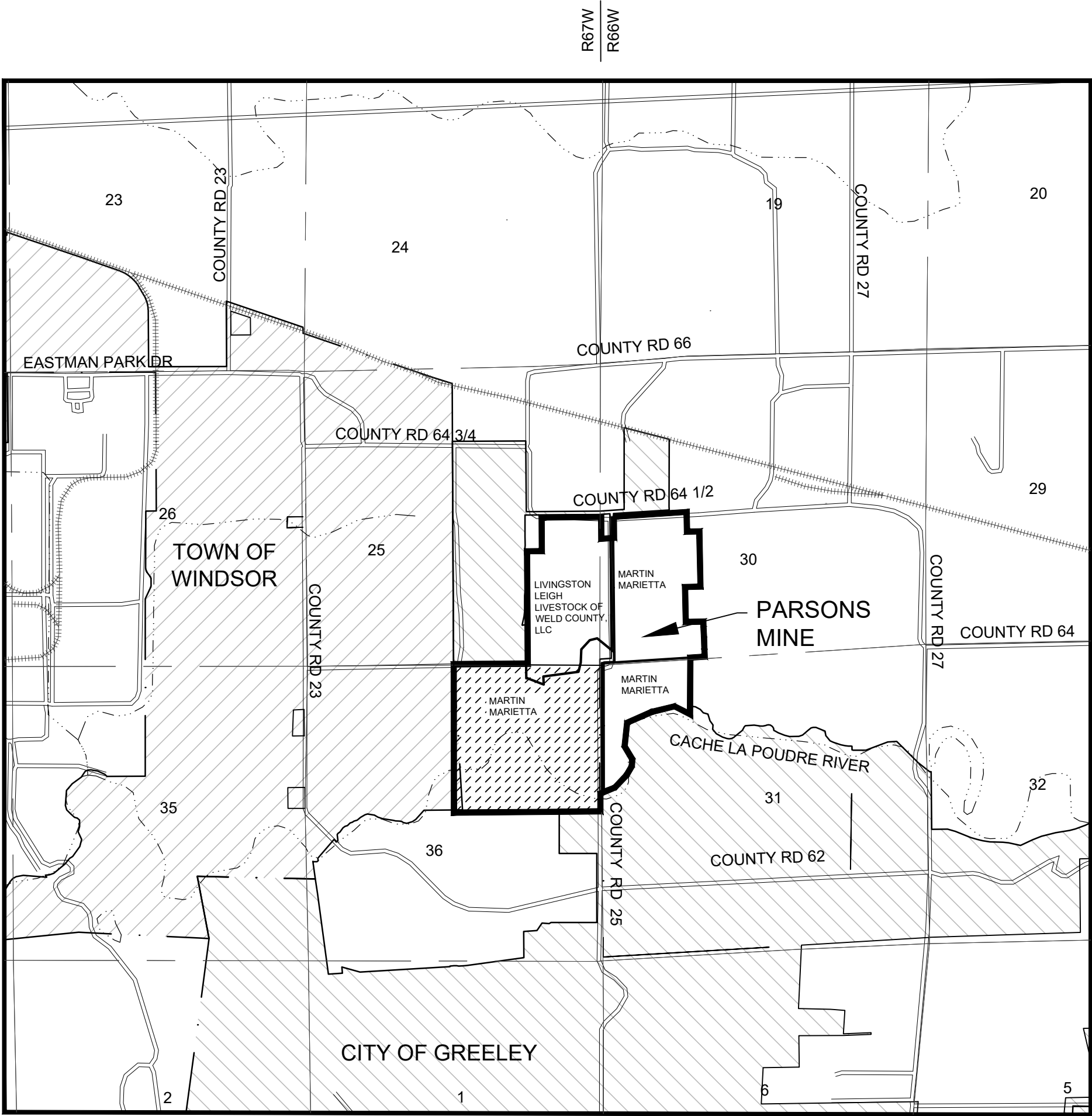


Thursday, April 10, 2025 10:55:17 AM DRAWING: O:\Projects\Longmont\8741117-8741007\CAD\SheetFiles\PAGE 1 EXHIBIT C.DWG LAYOUT: SHEET 1 USER NAME: WEATHERL, LAURA



- LEGEND:**
- COLORADO STATE BOARD OF LAND COMMISSIONERS LEASE AREA
 - GREELEY CITY LIMITS
 - WINDSOR TOWN LIMITS
 - CITY LIMITS BOUNDARY
 - WATER



- NOTES:**
- TETRA TECH IS NOT A GUARANTOR OF THE PERFORMANCE OF THE WORK.
 - TETRA TECH IS NOT RESPONSIBLE FOR SAFETY, IN, ON, OR ABOUT THE PROJECT SITE, NOR FOR COMPLIANCE BY THE APPROPRIATE PARTY WITH ANY REGULATIONS RELATED THERETO.
 - TETRA TECH EXERCISES NO CONTROL OVER THE SAFETY OR ADEQUACY OF ANY EQUIPMENT, BUILDING COMPONENTS, FORMS, OR OTHER WORK AIDS USED IN OR ABOUT THE PROJECT, OR OVER THE SUPERINTENDING OF THE SAME.
 - WRITTEN SCALES ON PLAN ARE FOR FULL SIZED 24" x 36" PLANS AND DO NOT APPLY TO REDUCED PLAN SETS.
 - CONTOUR ELEVATIONS ARE BASED ON NAVD 88.
 - HORIZONTAL DATUM IS MODIFIED STATE PLANE (NORTH) COORDINATES
 - ALL FLOODWAY AND FLOODPLAIN INFORMATION IS BASED ON MAP PAGE NO. 6 OF THE FLOOD PLAIN INFORMATION STUDY, CACHE LA POUDRE RIVER, FOR THE CITY OF GREELEY AND WELD COUNTY, DATED AUGUST 2003 AND AMENDED JUNE 2007.

CERTIFICATION:

THIS MAP WAS PREPARED BY TETRA TECH IN COOPERATION WITH MARTIN MARIETTA MATERIALS. MARTIN MARIETTA MATERIALS WILL KEEP THE DIVISION OF RECLAMATION, MINING AND SAFETY INFORMED OF ANY CHANGES TOT HE MINING OR RECLAMATION PLANS THROUGH ANNUAL REPORTS AND FILE TECHNICAL REVISIONS OR AMENDMENT APPLICATIONS AS NECESSARY THROUGHOUT THE LIFE OF THE MINE.

JULIE MIKULAS
REGIONAL LAND MANAGER, WEST DIVISION
MARTIN MARIETTA MATERIALS

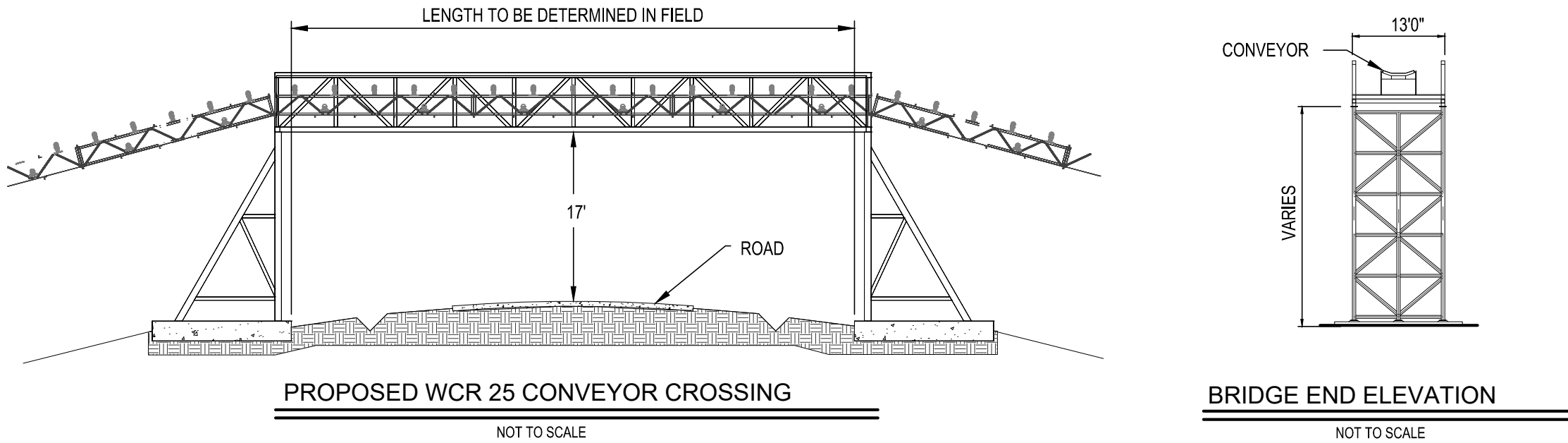
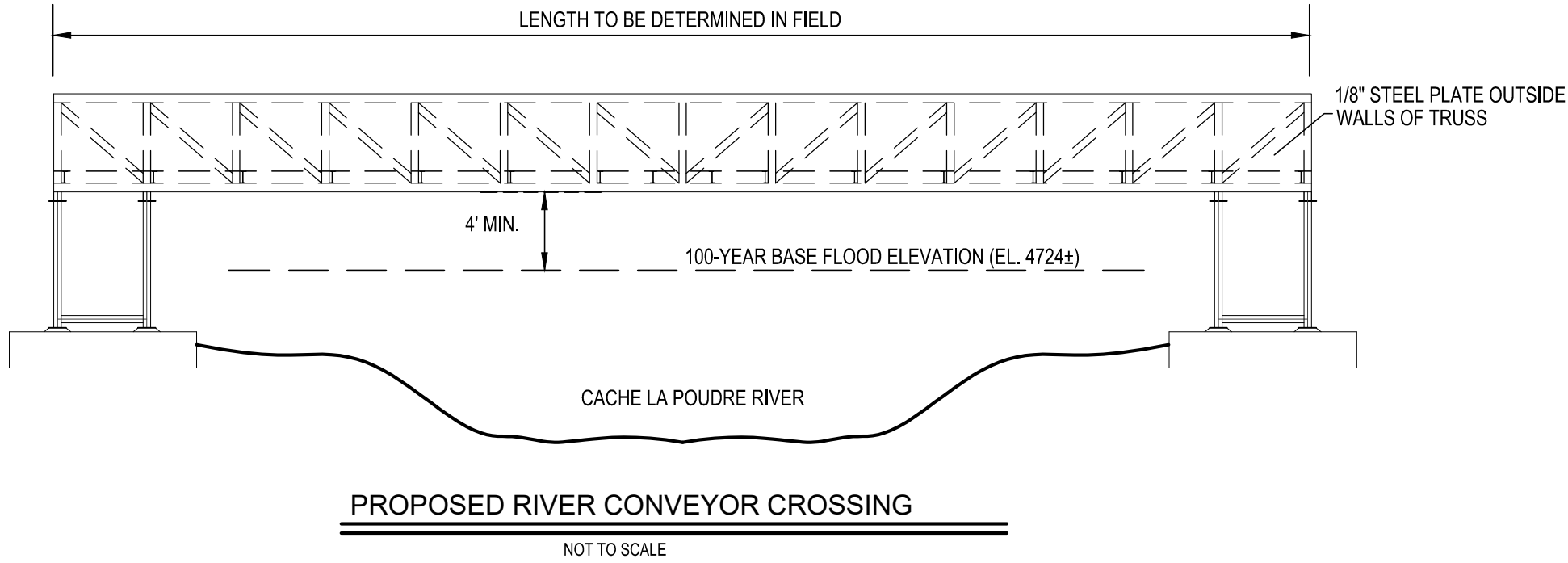
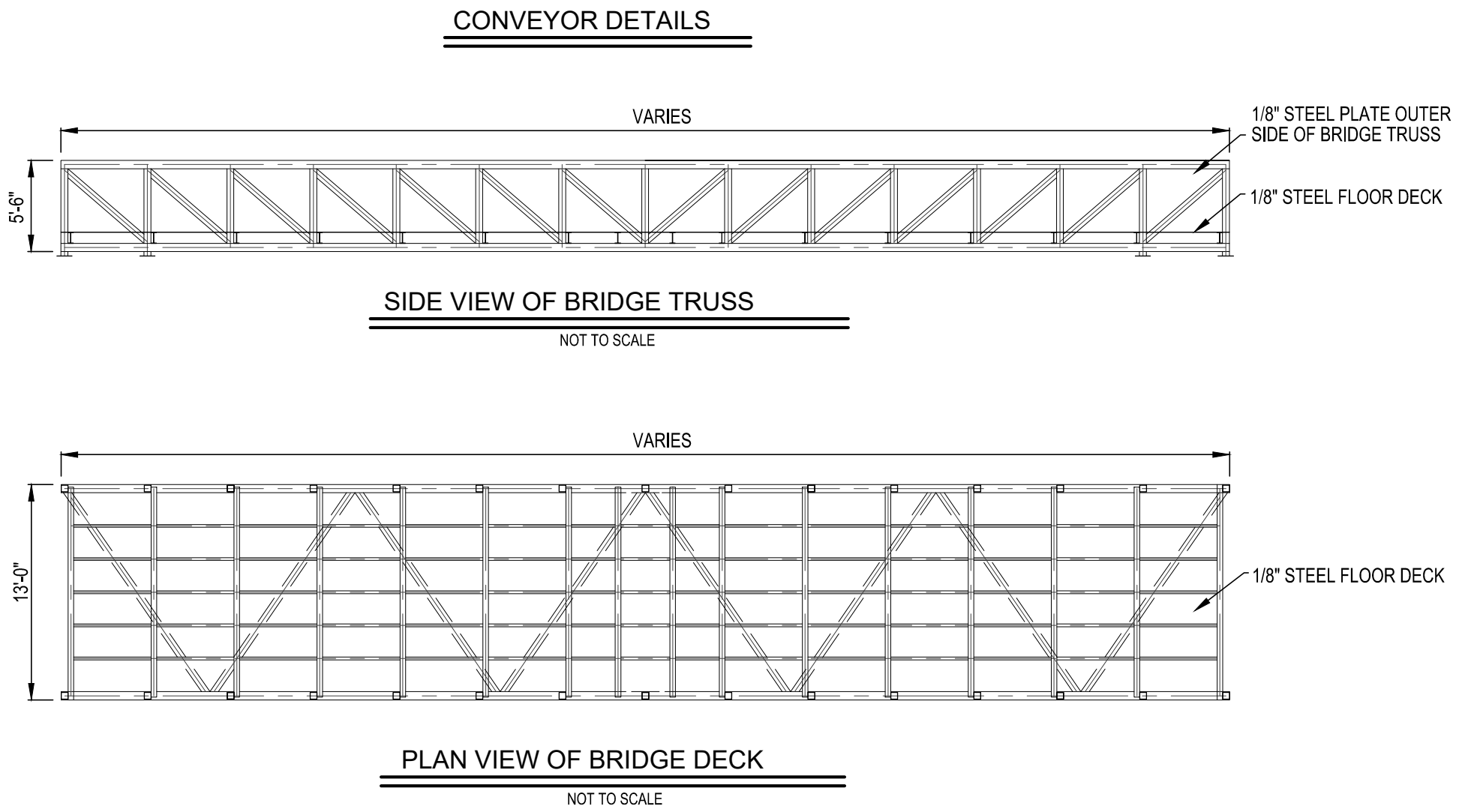
4-15-2025
DATE

- SHEET INDEX:**
- COVER SHEET AND DETAILS
 - PRE-MINING PLAN
 - OVERALL MINING PLAN
 - MINING PLAN MAP (NORTH HALF)
 - MINING PLAN MAP (SOUTH HALF)

PARSONS MINE

PRE-MINING AND MINING PLAN MAPS

A PARCEL OF LAND LOCATED IN THE NORTHEAST QUARTER OF SECTION 36, THE SOUTHEAST QUARTER OF SECTION 25, TOWNSHIP 6 NORTH, RANGE 67 WEST AND THE NORTHWEST QUARTER OF SECTION 31, THE SOUTHWEST QUARTER OF SECTION 30, TOWNSHIP 6 NORTH, RANGE 66 WEST, ALL IN THE SIXTH PRINCIPAL MERIDIAN, COUNTY OF WELD, STATE OF COLORADO



LEGAL DESCRIPTION:

A PARCEL OF LAND LOCATED IN THE NORTHEAST QUARTER OF SECTION 36, THE SOUTHEAST QUARTER OF SECTION 25, TOWNSHIP 6 NORTH, RANGE 67 WEST AND THE NORTHWEST QUARTER OF SECTION 31, THE SOUTHWEST QUARTER OF SECTION 30, TOWNSHIP 6 NORTH, RANGE 66 WEST, ALL IN THE SIXTH PRINCIPAL MERIDIAN, COUNTY OF WELD, STATE OF COLORADO AND BEING MORE PARTICULARLY DESCRIBED AS FOLLOWS:

COMMENCING AT THE EAST ONE-QUARTER CORNER OF SAID SECTION 25, WHENCE THE SOUTHEAST ONE-QUARTER CORNER OF SAID SECTION 25 BEARS SOUTH 00°35'52" EAST, A DISTANCE OF 2634.91 FEET, SAID LINE FORMING THE BASIS OF BEARINGS FOR THIS DESCRIPTION; THENCE ALONG SAID LINE SOUTH 00°35'52" EAST A DISTANCE OF 30.00 FEET TO THE TRUE POINT OF BEGINNING;

THENCE NORTH 86°17'47" EAST, A DISTANCE OF 12.24 FEET; THENCE SOUTH 00°35'52" EAST, A DISTANCE OF 388.35 FEET; THENCE NORTH 86°17'47" EAST, A DISTANCE OF 225.17 FEET; THENCE NORTH 00°09'28" WEST, A DISTANCE OF 378.51 FEET; THENCE ALONG A LINE 40.00 FEET SOUTH OF AND PARALLEL WITH THE NORTH LINE OF THE SOUTHWEST QUARTER OF SAID SECTION 30 NORTH 86°17'47" EAST, A DISTANCE OF 1298.11 FEET TO A POINT ON THE EASTERLY BOUNDARY LINE OF LOT 8, CORRECTED RECORDED EXEMPTION NO. 0805-30-3 RE2870 RECORDED 4-18-2002 ACCORDING TO THE WELD COUNTY RECORDS; THENCE ALONG SAID EASTERLY BOUNDARY LINE THE FOLLOWING TEN COURSES: 1) THENCE SOUTH 01°09'01" EAST, A DISTANCE OF 350.78 FEET; 2) THENCE NORTH 88°50'59" EAST, A DISTANCE OF 219.78 FEET; 3) THENCE SOUTH 01°09'01" EAST, A DISTANCE OF 984.28 FEET; 4) THENCE SOUTH 88°50'59" WEST, A DISTANCE OF 274.15 FEET; 5) THENCE SOUTH 01°09'01" EAST, A DISTANCE OF 624.44 FEET; 6) THENCE NORTH 88°50'59" EAST, A DISTANCE OF 312.79 FEET; 7) THENCE SOUTH 02°12'44" EAST, A DISTANCE OF 86.34 FEET; 8) THENCE SOUTH 02°20'17" EAST, A DISTANCE OF 191.70 FEET; 9) THENCE SOUTH 01°58'20" EAST, A DISTANCE OF 212.95 FEET; 10) THENCE SOUTH 02°26'29" EAST, A DISTANCE OF 135.01 FEET TO A POINT ON THE NORTH LINE OF THE NORTHWEST QUARTER OF SAID SECTION 31; THENCE ALONG SAID LINE SOUTH 86°25'00" WEST, A DISTANCE OF 256.20 FEET TO THE SOUTHWEST CORNER OF THE WEST HALF OF THE SOUTHEAST QUARTER OF SAID SECTION 30; THENCE ALONG THE EAST LINE OF THE WEST HALF OF THE NORTHWEST QUARTER OF SAID SECTION 31 SOUTH 00°20'58" WEST, A DISTANCE OF 1007.80 FEET TO A POINT ON THE SOUTHERLY LINE OF A PARCEL OF LAND RECORDED AS RECEPTION NO. 2253418, BOOK 1302, JUNE 17, 1991 IN THE WELD COUNTY RECORDS; THENCE ALONG SAID SOUTHERLY BOUNDARY LINE THE FOLLOWING NINE COURSES: 1) THENCE NORTH 63°06'14" WEST, A DISTANCE OF 308.55 FEET; 2) THENCE SOUTH 76°10'08" WEST, A DISTANCE OF 419.98 FEET; 3) THENCE SOUTH 66°20'03" WEST, A DISTANCE OF 477.17 FEET; 4) THENCE SOUTH 06°09'41" WEST, A DISTANCE OF 425.31 FEET; 5) THENCE SOUTH 31°21'08" EAST, A DISTANCE OF 265.50 FEET; 6) THENCE SOUTH 04°18'18" WEST, A DISTANCE OF 125.64 FEET; 7) THENCE SOUTH 30°30'33" WEST, A DISTANCE OF 186.53 FEET; 8) THENCE SOUTH 43°32'41" WEST, A DISTANCE OF 301.48 FEET; 9) THENCE SOUTH 67°20'04" WEST, A DISTANCE OF 280.45 FEET; THENCE ALONG A LINE 30.00 FEET WEST OF AND PARALLEL WITH THE EAST LINE OF THE NORTHEAST QUARTER OF SAID SECTION 36 SOUTH 00°01'18" EAST, A DISTANCE OF 319.20 FEET TO A POINT ON THE SOUTH LINE OF THE NORTHEAST QUARTER OF SAID SECTION 36; THENCE ALONG SAID SOUTH LINE SOUTH 89°33'49" WEST, A DISTANCE OF 2607.48 FEET TO THE CENTER ONE-QUARTER CORNER OF SAID SECTION 36; THENCE ALONG THE WEST LINE OF THE NORTHEAST QUARTER OF SAID SECTION 36 NORTH 00°05'20" WEST, A DISTANCE OF 2642.29 FEET TO THE NORTH ONE-QUARTER CORNER OF SAID SECTION 36; THENCE ALONG THE NORTH LINE OF THE NORTHEAST QUARTER OF SAID SECTION 36 NORTH 89°33'25" EAST, A DISTANCE OF 1320.15 FEET TO THE NORTHWEST CORNER OF THE EAST HALF OF THE NORTHEAST QUARTER OF SAID SECTION 36; THENCE ALONG THE WEST LINE OF THE EAST HALF OF THE SOUTHEAST QUARTER OF SAID SECTION 25 NORTH 00°25'35" WEST, A DISTANCE OF 2004.25 FEET; THENCE NORTH 89°32'02" EAST, A DISTANCE OF 265.00 FEET; THENCE NORTH 00°25'35" WEST, A DISTANCE OF 600.00 FEET TO A POINT ON THE SOUTH RIGHT-OF-WAY LINE OF WELD COUNTY ROAD NO. 64 1/2; THENCE ALONG SAID SOUTH RIGHT-OF-WAY LINE NORTH 89°32'02" EAST, A DISTANCE OF 1048.42 FEET TO THE TRUE POINT OF BEGINNING.

SAID PARCEL CONTAINS 380.621 ACRES MORE OR LESS.

GRAVEL MINING APPLICANT/OPERATOR:

MARTIN MARIETTA MATERIALS, INC.
ATTN: LAND MANAGER
1627 COLE BOULEVARD, SUITE 200
LAKEWOOD, CO 80401
720-245-6418

SURFACE OWNERS:

MARTIN MARIETTA MATERIALS, INC.
LIVINGSTON LEIGH LIVESTOCK OF WELD COUNTY, LLC

EXISTING VEGETATION:

PASTURE LAND

UTILITY INFORMATION:

UTILITY LOCATES PER UTILITY PROVIDERS.

GROSS SITE AREA WITHIN PERMIT BOUNDARY:

381± ACRES

NET SITE AREA WITHIN PERMIT BOUNDARY:

292± ACRES
(GROSS SITE AREA MINUS WETLANDS, RIVER SETBACK, WCR 25 ROW AND UNMINED AREA SURROUNDED BY WETLANDS SOUTH OF PHASE 2 AND NORTH OF PHASE 4A, AND PHASE 5C)

PROPOSED MINED AREA:

207± ACRES

TETRA TECH www.tetrattech.com 351 Coffman Street, Suite 200 Longmont, Colorado 80501 PHONE: (303) 772-5282 FAX: (303) 772-7039	MARK	DATE	DESCRIPTION	BY	MARTIN MARIETTA MATERIALS, INC. PARSONS MINE EXHIBIT C COVER SHEET AND DETAILS		Project No.:	117-8741007
	1	10-09	INITIAL SUBMITTAL	MAM			Designed By:	MMM
	2	1-20-10	ADEQUACY REVIEW RESPONSE	MAM			Drawn By:	GEH
	3	4-15-25	TECHNICAL REVISION	GEH			Checked By:	PFH
								1

THIS MAP WAS PREPARED BY TETRA TECH IN COOPERATION WITH MARTIN MARIETTA MATERIALS. MARTIN MARIETTA MATERIALS WILL KEEP THE DIVISION OF RECLAMATION, MINING AND SAFETY INFORMED OF ANY CHANGES TO THE MINING OR RECLAMATION PLANS THROUGH ANNUAL REPORTS AND FILE TECHNICAL REVISIONS OR AMENDMENT APPLICATIONS AS NECESSARY THROUGHOUT THE LIFE OF THE MINE.

4-15-2025

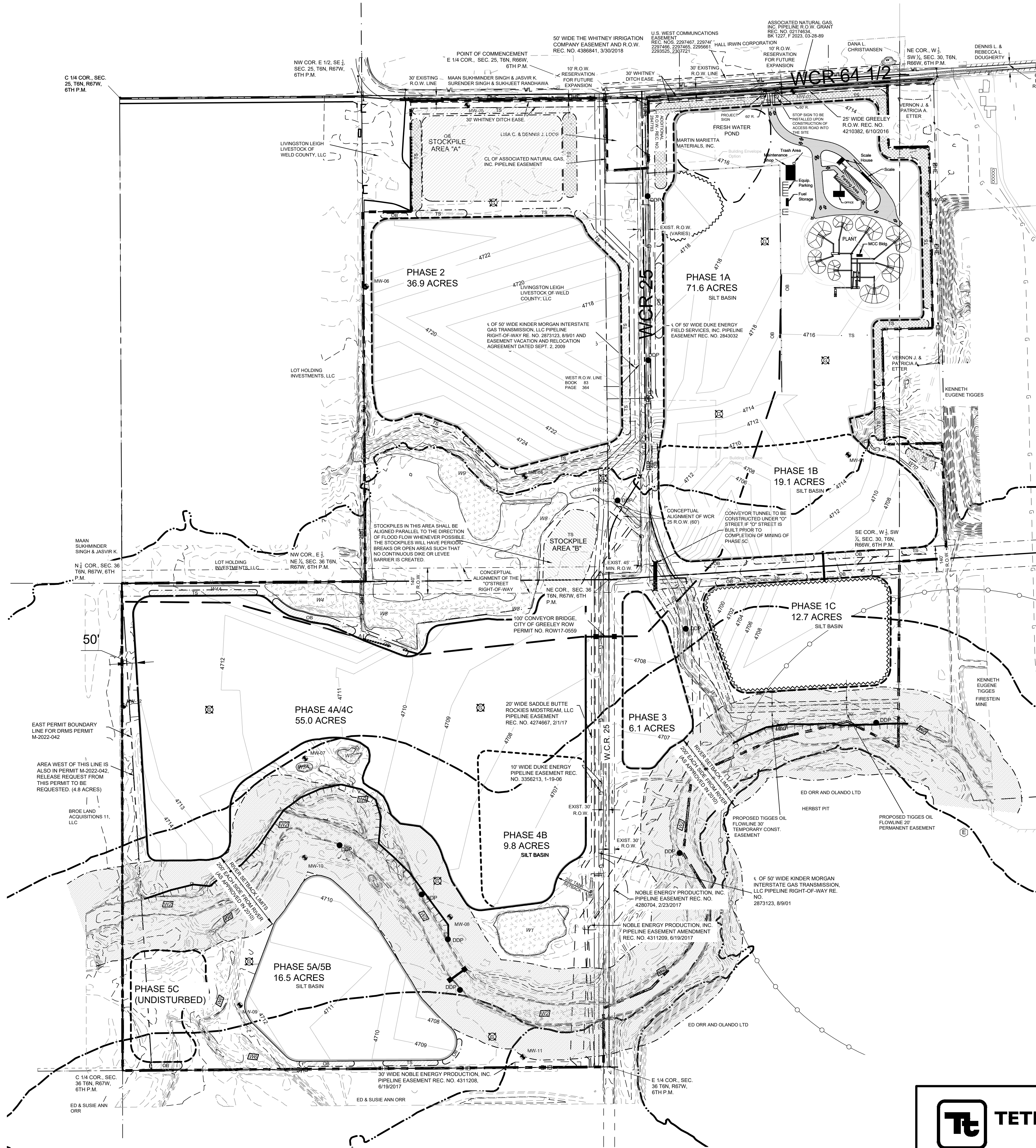
DATE _____



351 Coffman Street, Suite 200
Longmont, Colorado 80501
PHONE: (303) 772-5282 FAX: (303) 772-7039

2

Thursday, April 10, 2025 6:41:59 PM DRAWING: C:\Projects\Longmont\8741117-8741007\CAD\SheetFiles\PAGE 3 EXHIBIT C.DWG LAYOUT: PAGE 3 USER NAME: WEATHERL, LAURA




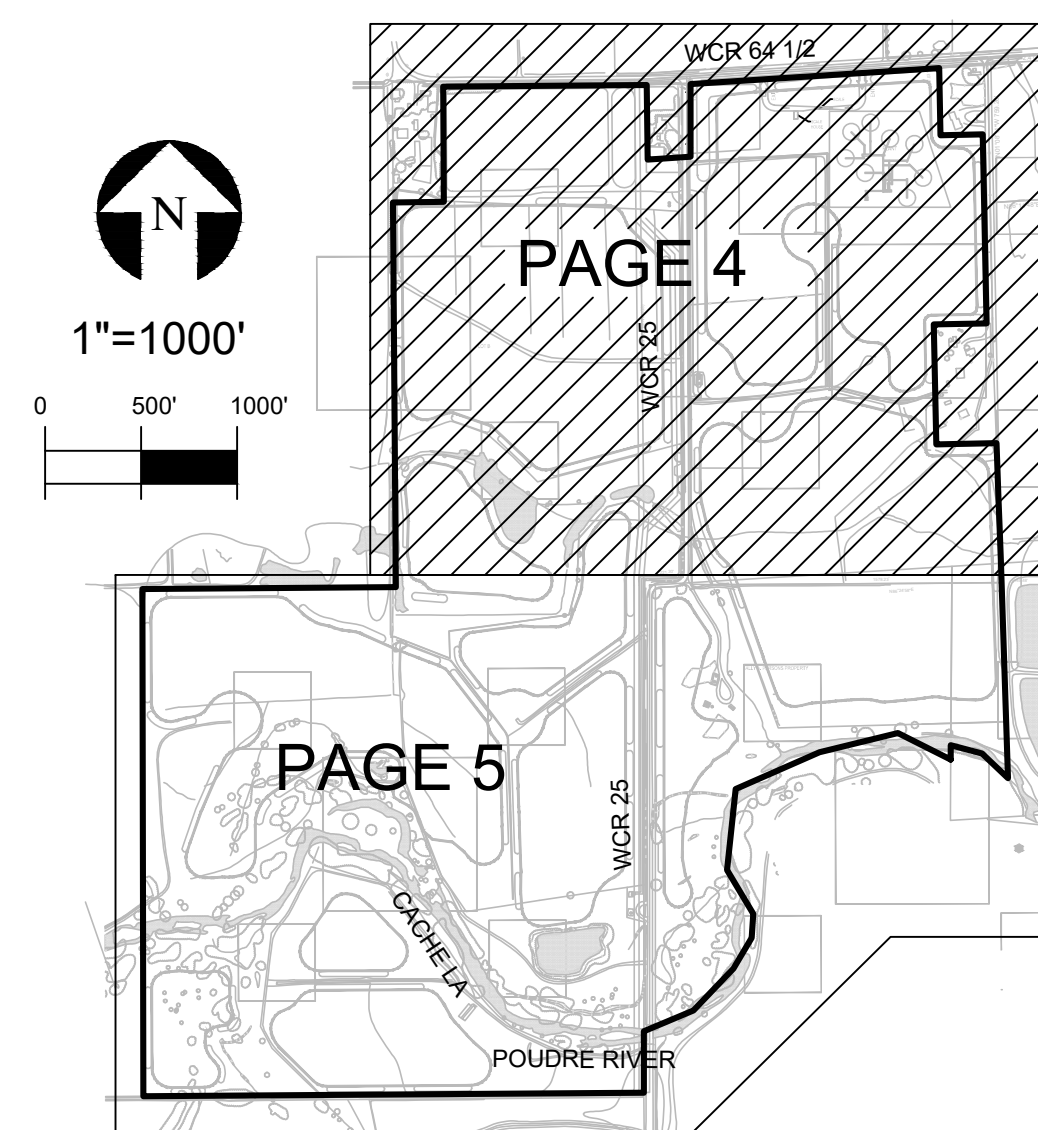
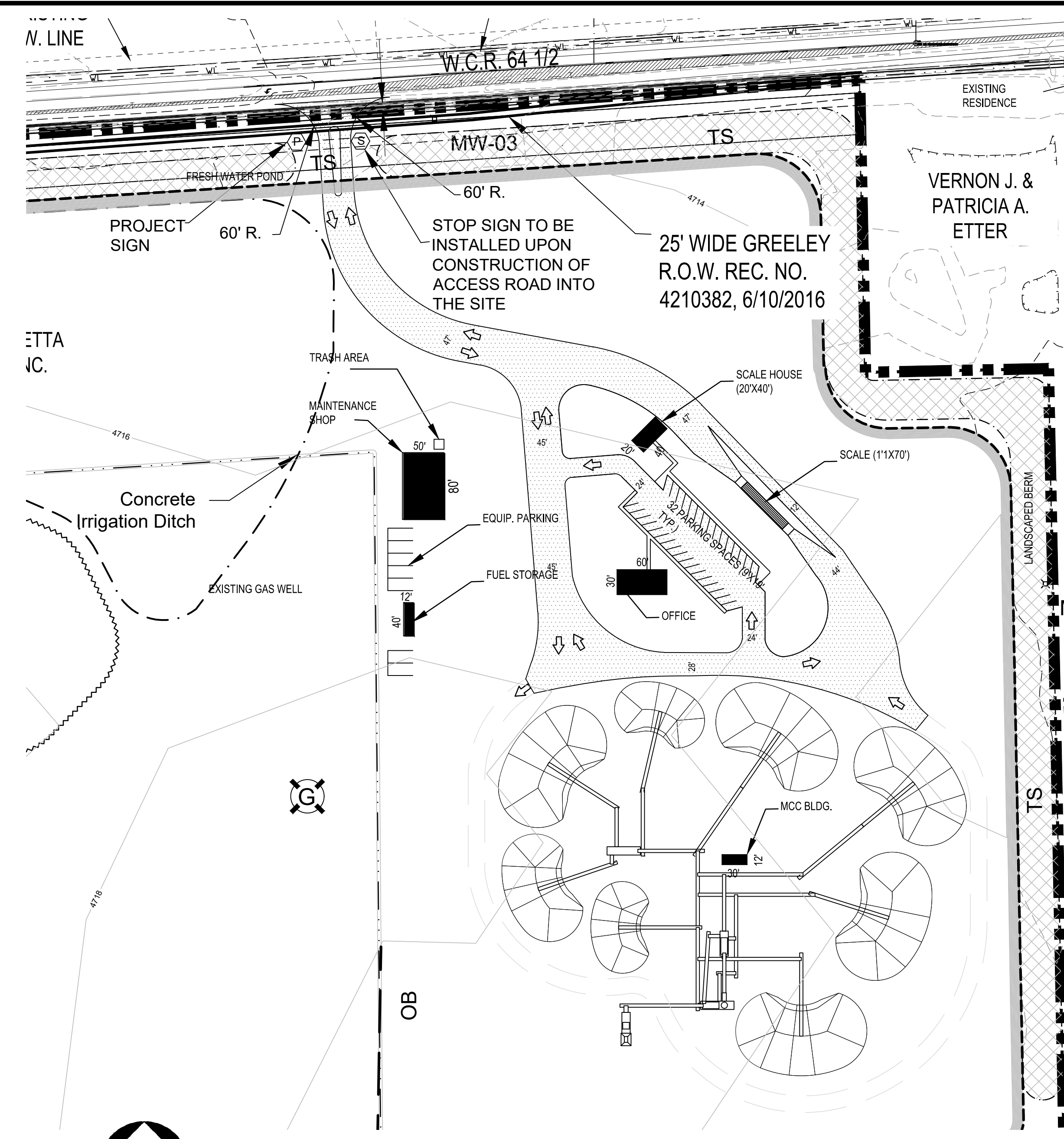
- LEGEND
- EXISTING CONTOURS
 - PROPOSED CONTOURS
 - EXISTING WETLAND
 - EXISTING DITCH OR CHANNEL
 - EXISTING GAS/OIL FLOWLINES
 - EXISTING TELEPHONE
 - OVERHEAD ELECTRIC
 - EXISTING FENCE
 - SECTION LINE
 - 1/4 MILE SETBACK FROM EAGLE NEST
 - TANK & OIL/GAS WELL SET BACK
 - OIL/GAS DRILLING WINDOWS
 - PERMIT BOUNDARY
 - MINING LIMITS
 - SILT BASIN AREA
 - EXISTING EASEMENT
 - PROPOSED EASEMENT
 - RIVER EDGE
 - RIVER EDGE (UPDATED 2025)
 - 200' RIVER SETBACK FOR MINING
 - POWER POLE
 - EAGLE NESTING AREA
 - SECTION CORNER
 - GAS/OIL WELL
 - GAS/OIL TANK
 - PLUGGED AND ABANDONED GAS WELL (APPROXIMATE LOCATION)
 - CONVEYOR BRIDGE
 - CONVEYOR TUNNEL
 - CONVEYOR (EXACT LOCATION MAY CHANGE)
 - MINING LIMITS
 - LANDSCAPED BERM MADE OF TOPSOIL
 - STOCKPILE AREA FOR TOPSOIL
 - STOCKPILE AREA FOR OVERBURDEN
 - 2003 ARMY CORPS FLOODWAY (FW)
 - 2003 ARMY CORPS 100 YEAR FLOOD PLAIN (FP-1)

CERTIFICATION:

THIS MAP WAS PREPARED BY TETRA TECH IN COOPERATION WITH MARTIN MARIETTA MATERIALS. MARTIN MARIETTA MATERIALS WILL KEEP THE DIVISION OF RECLAMATION, MINING AND SAFETY INFORMED OF ANY CHANGES TO THE MINING OR RECLAMATION PLANS THROUGH ANNUAL REPORTS AND FILE TECHNICAL REVISIONS OR AMENDMENT APPLICATIONS AS NECESSARY THROUGHOUT THE LIFE OF THE MINE.

Julie Mikulas 4-15-2025
JULIE MIKULAS REGIONAL LAND MANAGER, WEST DIVISION MARTIN MARIETTA MATERIALS DATE


<div></div> <div>TETRA TECH</div> <div>www.tetrattech.com</div> <div>351 Coffman Street, Suite 200 Longmont, Colorado 80501 PHONE: (303) 772-5282 FAX: (303) 772-7039</div>	MARK	DATE	DESCRIPTION	BY	MARTIN MARIETTA MATERIALS, INC. PARSONS MINE EXHIBIT C OVERALL MINING PLAN	Project No.: 117-8741007
	1	10-09	INITIAL SUBMITTAL	MAM		Designed By: MMM
	2	1-20-10	ADEQUACY REVIEW RESPONSE	MAM		Drawn By: GEH
	3	4-15-25	TECHNICAL REVISION	GEH		Checked By: PFH
						3



LEGEND		LEGEND	
	EXISTING CONTOURS		PLUGGED AND ABANDONED GAS WELL (APPROXIMATE LOCATION)
	PROPOSED CONTOURS		GAS/OIL TANK
	EXISTING WETLAND		CONVEYOR BRIDGE
	EXISTING DITCH OR CHANNEL		CONVEYOR TUNNEL
	EXISTING GAS/OIL FLOWLINES		CONVEYOR (EXACT LOCATION MAY CHANGE)
	EXISTING TELEPHONE		DEWATERING SUMP
	OVERHEAD ELECTRIC		DEWATERING DISCHARGE LINE
	SECTION LINE		DEWATERING DISCHARGE POINT
	TANK & OIL/GAS WELL SET BACK		DEWATERING TRENCH (2' DEEP BY 2' WIDE IN BEDROCK)
	OIL/GAS DRILLING WINDOWS		LANDSCAPED BERM MADE OF TOPSOIL
	PERMIT BOUNDARY		STOCKPILE AREA FOR TOPSOIL
	STOCKPILE		STOCKPILE AREA FOR OVERBURDEN
	MINING LIMITS		2003 ARMY CORPS 100 YEAR FLOOD PLAIN (FP-1)
	SILT BASIN AREA		
	EXISTING EASEMENT		
	PROPOSED EASEMENT		
	RIVER EDGE		
	RIVER EDGE (UPDATED 2025)		
	POWER POLE		
	SECTION CORNER		

CERTIFICATION:

THIS MAP WAS PREPARED BY TETRA TECH IN COOPERATION WITH MARTIN MARIETTA MATERIALS. MARTIN MARIETTA MATERIALS WILL KEEP THE DIVISION OF RECLAMATION, MINING AND SAFETY INFORMED OF ANY CHANGES TO THE MINING OR RECLAMATION PLANS THROUGH ANNUAL REPORTS AND FILE TECHNICAL REVISIONS OR AMENDMENT APPLICATIONS AS NECESSARY THROUGHOUT THE LIFE OF THE MINE.

	4-15-2025
JULIE MIKULAS REGIONAL LAND MANAGER, WEST DIVISION MARTIN MARIETTA MATERIALS	DATE

Tt

TETRA TECH

www.tetrattech.com

351 Coffman Street, Suite 200
Longmont, Colorado 80501
PHONE: (303) 772-5282, FAX: (303) 772-7039

MARK	DATE	DESCRIPTION	BY
1	10-09	INITIAL SUBMITTAL	MAM
2	1-20-10	ADEQUACY REVIEW RESPONSE	MAM
3	4-15-25	TECHNICAL REVISION	GEH

MARTIN MARIETTA MATERIALS, INC.

PARSONS MINE
EXHIBIT C

MINING PLAN MAP (NORTH HALF)

Project No.:

117-8741007

Designed By:

MMM

Drawn By:

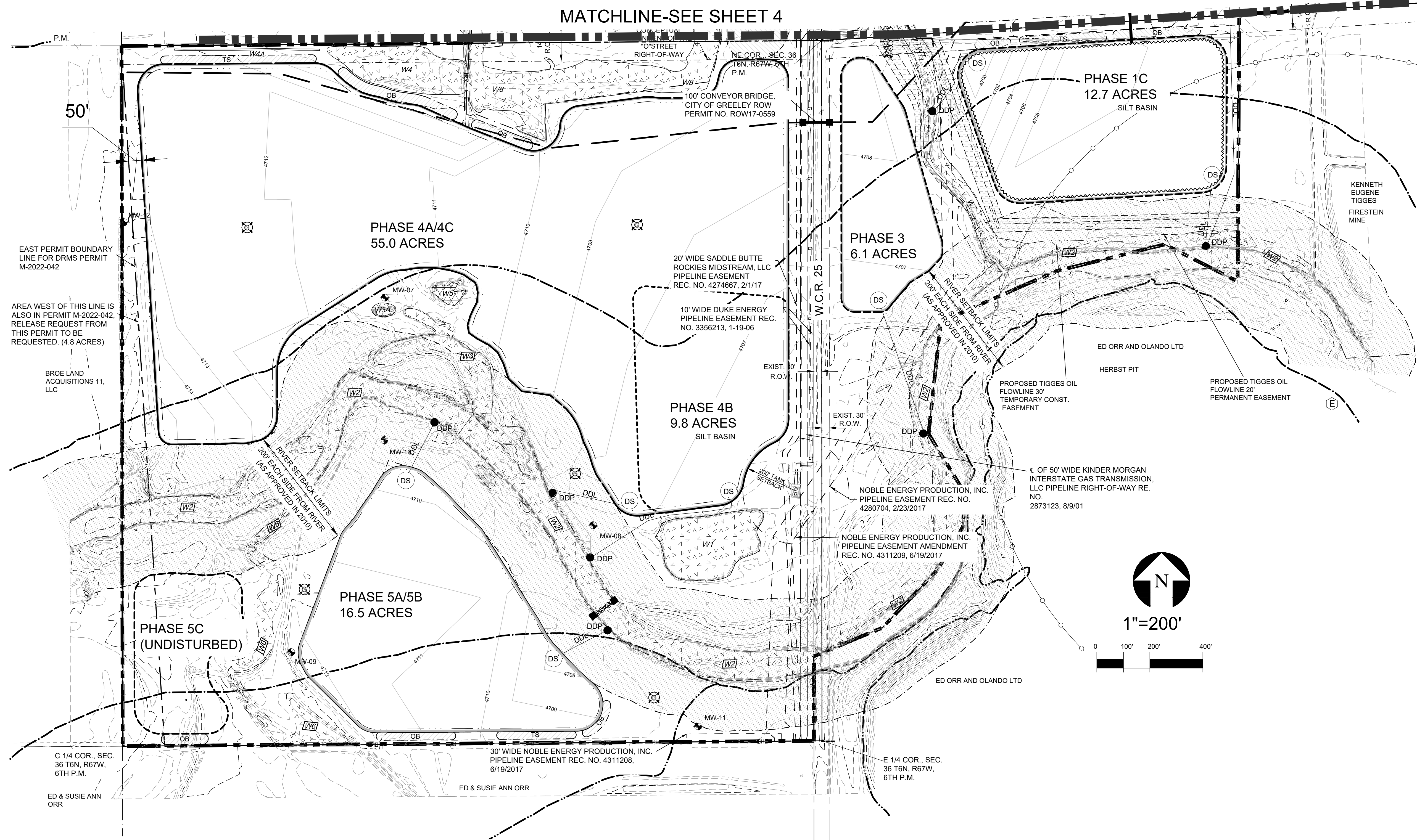
GEH

Checked By:

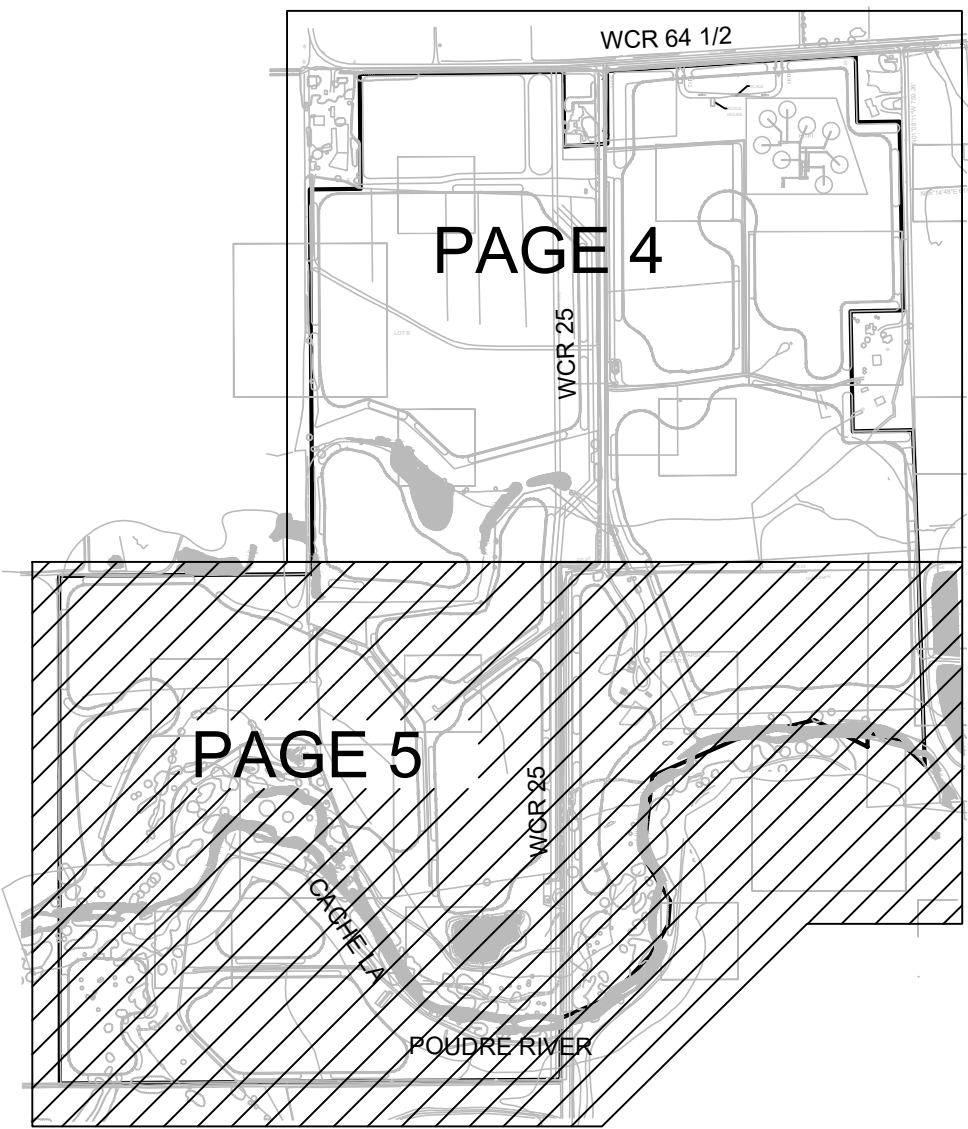
PFH

4

Thursday, April 10, 2025 6:25:53 PM DRAWING: C:\Projects\Longmont\8741117-8741007\CAD\SheetFiles\PAGE 5 EXHIBIT C.DWG LAYOUT: PAGE 5 USER NAME: WEATHERL, LAURA



- LEGEND**
- 4720 --- EXISTING CONTOURS
 - 4720 --- PROPOSED CONTOURS
 - EXISTING WETLAND
 - EXISTING DITCH OR CHANNEL
 - G --- EXISTING GAS/OIL FLOWLINES
 - T --- EXISTING TELEPHONE
 - OHE --- OVERHEAD ELECTRIC
 - X --- EXISTING FENCE
 - SECTION LINE
 - 1/4 MILE SETBACK FROM EAGLE NEST
 - TANK & OIL/GAS WELL SET BACK
 - OIL/GAS DRILLING WINDOWS
 - PERMIT BOUNDARY
 - STOCKPILE
 - MINING LIMITS
 - SILT BASIN AREA
 - EXISTING EASEMENT
 - PROPOSED EASEMENT
 - RIVER EDGE
 - RIVER EDGE (UPDATED 2025)
 - RIVER SETBACK
 - EAGLE NESTING AREA
 - SECTION CORNER
 - GAS/OIL WELL
 - PLUGGED AND ABANDONED GAS WELL (APPROXIMATE LOCATION)
 - GAS/OILTANK
 - DOWATERING SUMP
 - DDL --- DEWATERING DISCHARGE LINE
 - DDP --- DEWATERING DISCHARGE POINT
 - DEWATERING TRENCH (2' DEEP BY 2' WIDE IN BEDROCK)
 - CONVEYOR BRIDGE
 - CONVEYOR TUNNEL
 - CONVEYOR (EXACT LOCATION MAY CHANGE)
 - 2003 ARMY CORPS FLOODWAY (FW)
 - 2003 ARMY CORPS 100 YEAR FLOOD PLAIN (FP-1)



EAGLE NEST NOTE:

SEVERAL PROTECTION AND ENHANCEMENT MEASURES WILL BE INCORPORATED INTO THE OPERATION AND RECLAMATION PLANS TO PROTECT THE CURRENT ACTIVE BALD EAGLE NEST:

* NO MINING ACTIVITY WILL BE CONDUCTED WITHIN 1/4 MILE OF THE NEST FROM NOVEMBER 15 THROUGH JULY 31.

* NO MINING ACTIVITY WILL BE CONDUCTED WITHIN 1/4 MILE OF THE NEST THROUGHOUT THE YEAR WITH THE EXCEPTION OF DEVELOPMENT OF AN 12.7± ACRE WETLAND SILT POND CREATED JUST NORTH OF THE RIVER. THE WORK TO CREATE THIS POND WILL BE CONDUCTED OVER A 2 YEAR PERIOD AND WILL BE LIMITED TO AUGUST 15 TO OCTOBER 15 TO PROTECT THE OCCUPIED NEST SITE. A WETLAND BASIN WILL BE CREATED THROUGH MANAGEMENT OF WATER AND PLANTING OF NATIVE WETLAND PLANT SPECIES. THE PURPOSE OF THIS SILT BASIN IS NOT ONLY TO DISPOSE OF SMALLER MATERIALS BUT ALSO TO DEVELOP A WETLAND ADJACENT TO THE RIVER THAT WILL ATTRACT WATERFOWL AND OTHER WILDLIFE SPECIES USED AS A FOOD SOURCE FOR THE EAGLES.

* THE RIVER CORRIDOR WILL BE PROTECTED FROM ALL MINING ACTIVITY BY A 200 FOOT BUFFER.

* EXISTING WETLANDS IDENTIFIED IN 2007 WILL NOT BE IMPACTED BY MINING OPERATIONS UNDER THE CURRENT RECLAMATION PLAN. ANY FUTURE CHANGES TO THE RECLAMATION PLAN THAT REQUIRE AN UNAVOIDABLE IMPACT TO JURISDICTIONAL WETLANDS (SUCH AS A ROAD CROSSING) WOULD REQUIRE COORDINATION WITH THE US ARMY CORP OF ENGINEERS AND MAY INVOLVE OBTAINING THE NECESSARY PERMITS UNDER THE CLEAN WATER ACT.

* COORDINATION WILL BE CONDUCTED ANNUALLY WITH THE COLORADO DIVISION OF WILDLIFE TO MONITOR THE EAGLE NESTING LOCATION AND ACTIVITY. PROTECTION MEASURES WILL BE REVIEWED AND COORDINATED WITH THE COLORADO DIVISION OF WILDLIFE SHOULD THE EAGLES RELOCATE THEIR NEST.

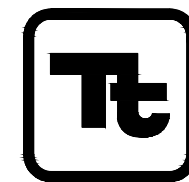
* COORDINATION WILL BE CONDUCTED ANNUALLY WITH THE COLORADO DIVISION OF WILDLIFE TO MONITOR THE LOCATIONS AND ACTIVITY OF EXISTING AND NEW RAPTOR NESTS.

CERTIFICATION:

THIS MAP WAS PREPARED BY TETRA TECH IN COOPERATION WITH MARTIN MARIETTA MATERIALS. MARTIN MARIETTA MATERIALS WILL KEEP THE DIVISION OF RECLAMATION, MINING AND SAFETY INFORMED OF ANY CHANGES TOT HE MINING OR RECLAMATION PLANS THROUGH ANNUAL REPORTS AND FILE TECHNICAL REVISIONS OR AMENDMENT APPLICATIONS AS NECESSARY THROUGHOUT THE LIFE OF THE MINE.

Julie Mikulas
JULIE MIKULAS
REGIONAL LAND MANAGER, WEST DIVISION
MARTIN MARIETTA MATERIALS

4-15-2025
DATE



TETRA TECH

www.tetrattech.com
351 Coffman Street, Suite 200
Longmont, Colorado 80501
PHONE: (303) 772-5282 FAX: (303) 772-7039

MARK	DATE	DESCRIPTION	BY
1	10-09	INITIAL SUBMITTAL	MAM
2	1-20-10	ADEQUACY REVIEW RESPONSE	MAM
3	4-15-25	TECHNICAL REVISION	GEH

MARTIN MARIETTA MATERIALS
PARSONS MINE
EXHIBIT C
MINING PLAN MAP (SOUTH HALF)

Project No.: 117-8741007
Designed By: MMM
Drawn By: GEH
Checked By: PFH