

March 28, 2025

Patrick Lennberg
Division of Reclamation, Mining and Safety
Environmental Protection Specialist
1313 Sherman Street, Room 215
Denver, Colorado 80203

Via Email

Re: CEMEX Lyons Mine Permit M-1977-208
Technical Revision No. 12, Revised Groundwater Monitoring Plan
First Quarter 2025 Monitoring Data

Dear Patrick Lennberg:

This letter transmits the surface water and groundwater data associated with the sampling of the cement kiln dust disposal area (C-Pit). This report includes data from the C-Pit ponded water and related groundwater monitoring for the first quarter of 2025, covering the reporting period from January 1, 2025, to March 31, 2025. Table 1 presents data for the last four quarters.

Groundwater samples were collected on February 11 and 12, 2025 from the CEM-001 and CEM-004 groundwater monitoring wells and from the C-Pit ponded water. The inspection of groundwater monitoring well CEM-005 on February 12, 2025, indicated that there was not enough water volume to collect a representative sample.

The samples collected from C-Pit ponded water and the groundwater monitoring wells were analyzed for pH, chloride, sulfate, total dissolved solids, selenium, and thallium. The reported pH data are based on the pH analyses performed at the time of sample collection in the field (Table 1). The measured pH at groundwater monitoring well CEM-004 and analytical results for chloride, sulfate, total dissolved solids (TDS), selenium and thallium from the February 12, 2025, groundwater sample were within the target levels prescribed by TR-12, as shown in Table 1.

In addition, a Stiff Diagram of the groundwater cation/anion data from CEM-004 compared to the average and 90th percentile of the cation/anion concentrations from the last four quarterly samples of C-Pit data is provided in Figure 1 for reference. As shown in Figure 1 and consistent with past reports, the signature for CEM-004 continues to be significantly different from that of C-Pit.

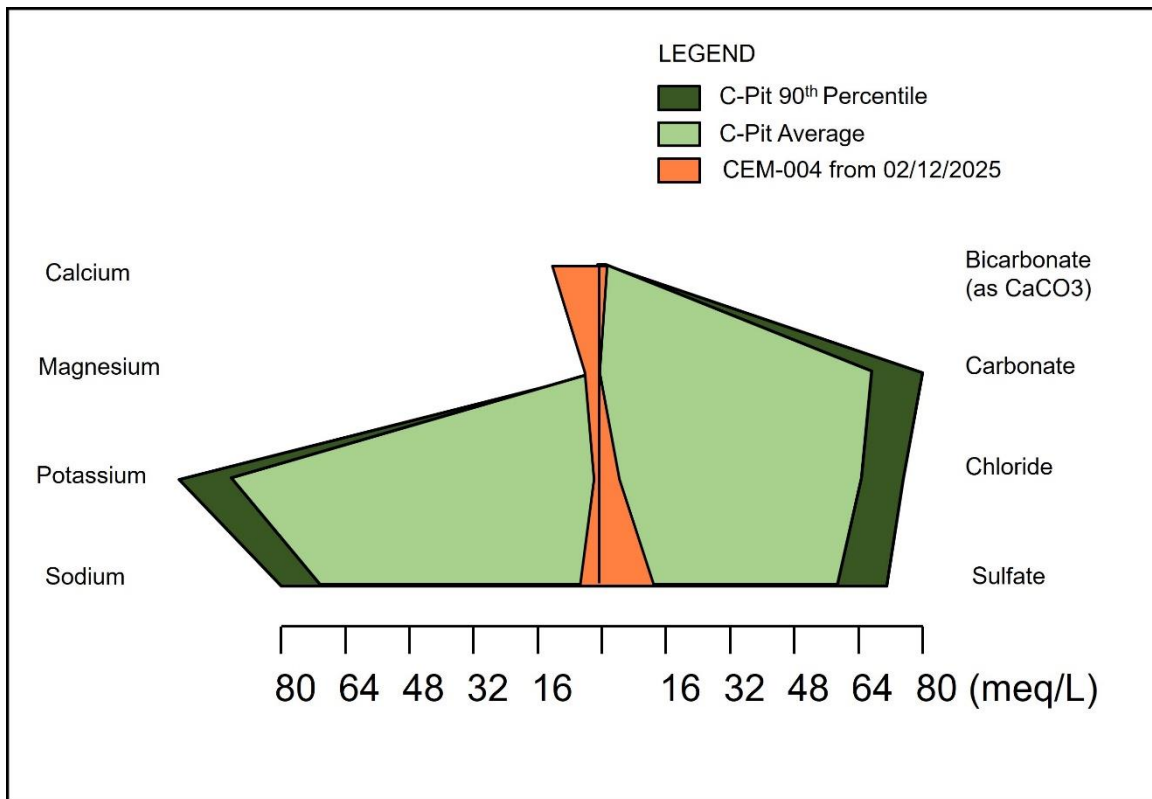


Figure 1: First Quarter of 2025 cation/anion data for CEM-004 compared to C-Pit

Please contact me at 863-602-8024 or by email at robing.simons@cemex.com for any questions or concerns regarding this submittal.

Sincerely,

Robin Simons

Robin G. Simons
Environmental Manager

Encs. Y25Q1C-Pit Monitoring Report and associated Stiff Plot (Fig.1), and Summary of Analytical Results (Table 1), Field Notes, and Time Trend Plots (Figs. A, B, C)

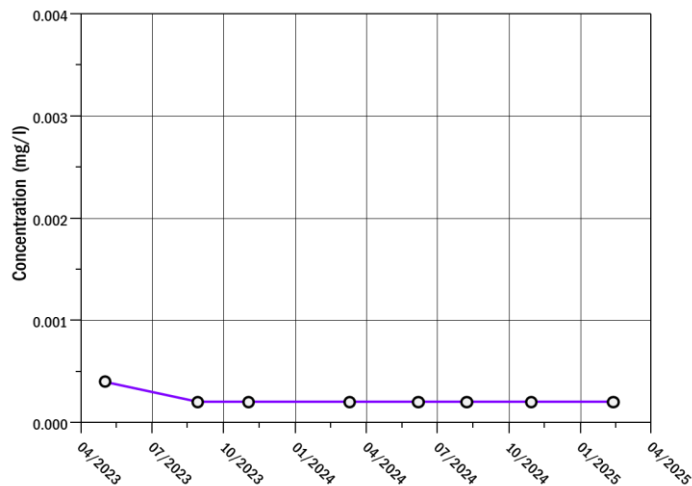
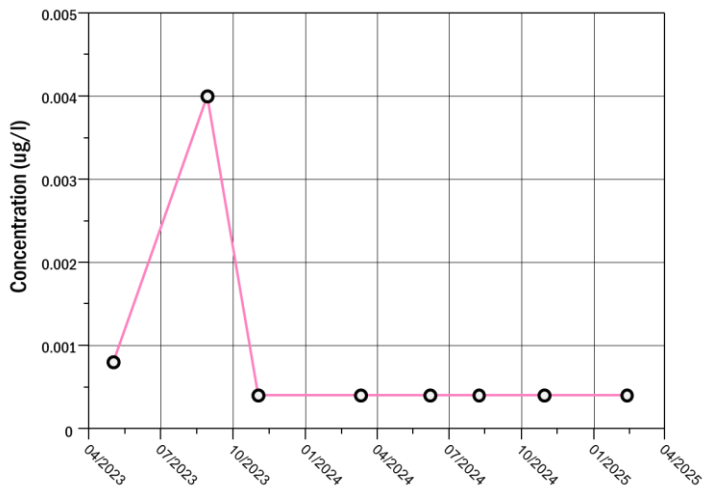
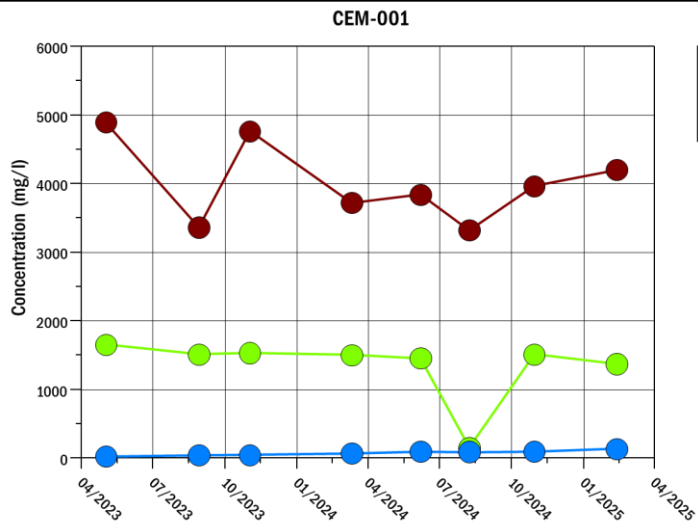
Table 1
Summary of Analytical Results

Parameter	Units	C-Pit				CEM-001				CEM-004				CEM-005				CEM-004, CEM-005 Triggers (TR-12)
		2024 Q2	2024 Q3	2024 Q4	2025 Q1	2024 Q2	2024 Q3	2024 Q4	2025 Q1	2024 Q2	2024 Q3	2024 Q4	2025 Q1	2024 Q2	2024 Q3	2024 Q4	2025 Q1	
		6/7/2024	8/8/2024	10/30/2024	2/11/2025	6/7/2024	8/8/2024	10/30/2024	2/11/2025	6/7/2024	8/8/2024	10/30/2024	2/12/2025	^a See dates below	^a See dates below	^a See dates below	^a See dates below	
		value	value	value	value	value	value	value	value	value	value	value	value	value	value	value	value	
pH (On-site)	su	10.71	10.79	7.82	11.34	7.82	7.99	7.98	7.55	7.21	7.71	7.59	7.31	insufficient water to sample	insufficient water to sample	insufficient water to sample	insufficient water to sample	6.5-8.5
Chloride	mg/L	2120	2420	2760	1930	1450	150	1510	1370	6.3	3.4	120	181					1,053
Sulfate	mg/L	2370	2870	3630	2620	93	88.7	91.8	129	11	9.2	456	660					2,641
Total Dissolved Solids	mg/L	3170	11000	10200	8460	3840	3320	3960	4200	139	83	976	1260					501-10,000 or 1.25 times background
Dissolved Selenium	mg/L	0.482	0.533	0.575	0.362	<0.0004	<0.0004	<0.0004	<0.0004	<0.0004	<0.0004	0.0006	0.0009					0.05
Dissolved Thallium	mg/L	0.0023	0.0035	0.0037	0.0021	<0.0002	<0.0002	<0.0002	<0.0002	<0.0002	<0.0002	<0.0002	<0.0002					0.002

Notes and Qualifiers:

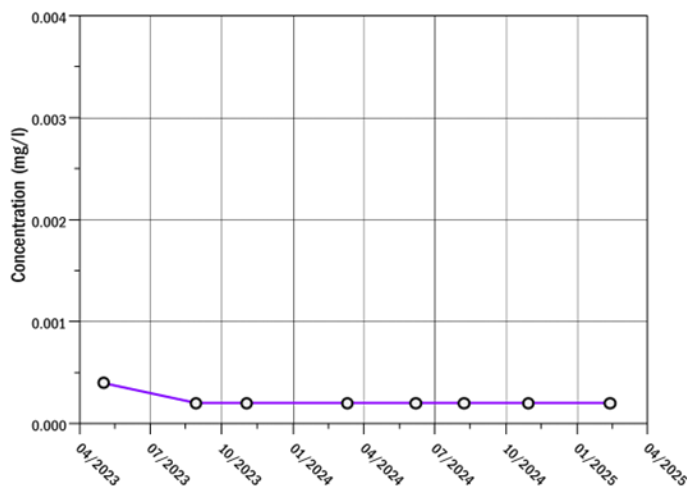
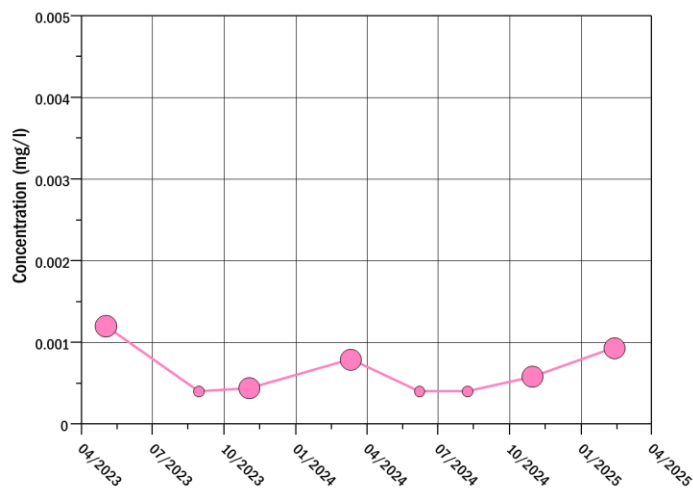
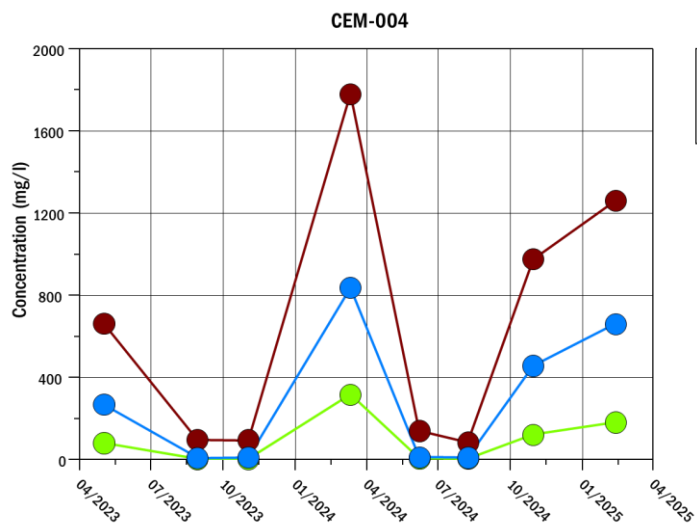
- H
- Sample analyzed beyond recommended hold time
- U
- Detection limit is estimated
- UJ
- Estimated low
- X
- Data may not be representative due to nonstandard field sampling protocol
- NA
- Not analyzed.
- value
- Exceeds trigger

a CEM 005 Y24 Q2 Well Sounding: 6/7/2024
a CEM 005 Y24 Q3 Well Sounding: 8/8/2024
a CEM 005 Y24 Q4 Well Sounding: 10/30/2024
a CEM 005 Y25 Q1 Well Sounding: 02/12/2025



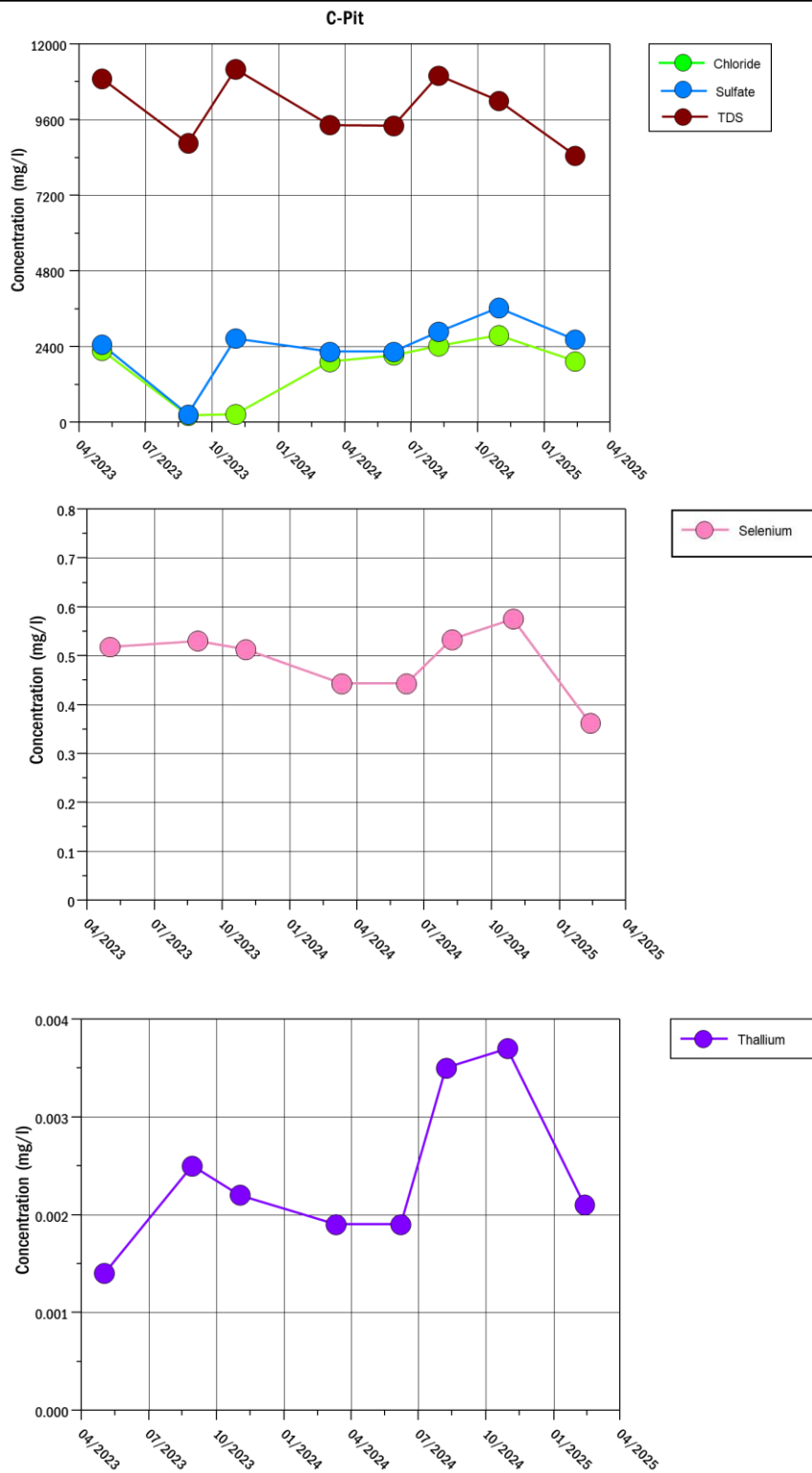
Note: Concentrations reported below the detection limit are plotted as open symbols

Figure A Time trend plots for CEM-001



Note: Concentrations reported below the detection limit are plotted as open symbols

Figure B Time trend plots for CEM-004



Note: Concentrations reported below the detection limit are plotted as open symbols

Figure C Time trend plots for C-Pit

CEMEX Lyons Quarterly Groundwater Monitoring

Field Data Sheet

Date: 2/11/25 - 2/12/25

Project Number: 280135

Personnel: S Becker D Gibson

Location	Date	Time	pH	Temp (°C)	Cond (mS/cm)	DO (mg/L)	Total Depth (fbtoc)	Depth to Water (ft)	Notes
CEM-001	2/11	1200	Begin Purge				143 (3.5' from top of casing to ground)	-	
	2/11	1220	End Purge					-	
	2/11	1240	8.67	11.4	6.33	5.64			
CEM-004	2/11	1330	8.44	4.1	1.44	14.55	23.5	12.4	13:30 Begin Purge
	2/11	1335	7.55	5.4	1.753	12.91		12.6	Static @ 12.7
									@ 4 gallons pumped due to temps
CEM-005	2/11	1040					400 (2.62' from top of casing to ground)	399.53	* See Second Sheet for return to sample
								-2.62	
	2/11	1100	7.52	15.3	5.819			399.89	
								-2.62	
	2/12	1140						397.75	Unable to sample
								-2.62	
A - Pit	2/11	1125	8.72	0	2.105	11.90	N/A		
C - Pit	2/11	1225	11.34	7.2	14.954	13.20	N/A		

Field Data Sheet

Project Number: 280135

[illegible]