

Fremont Gravel Pit M1984117

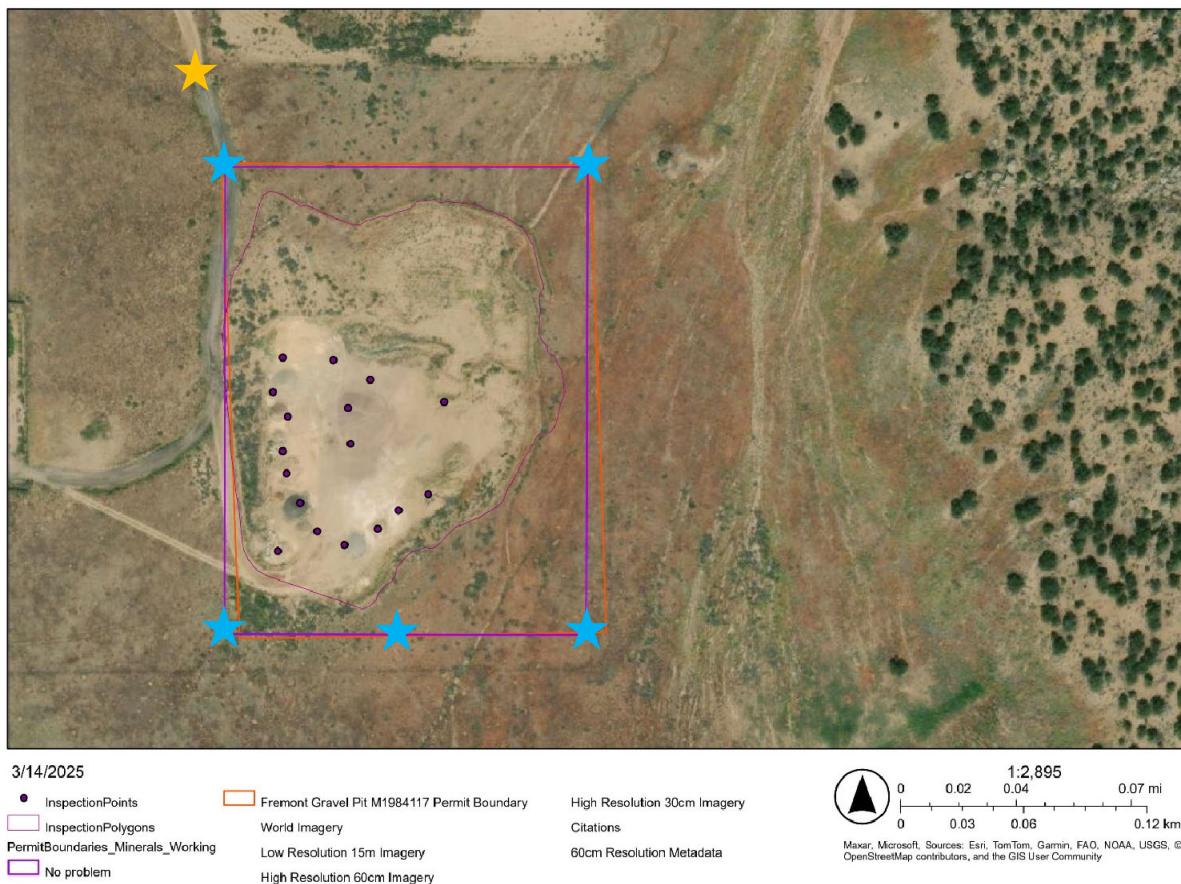
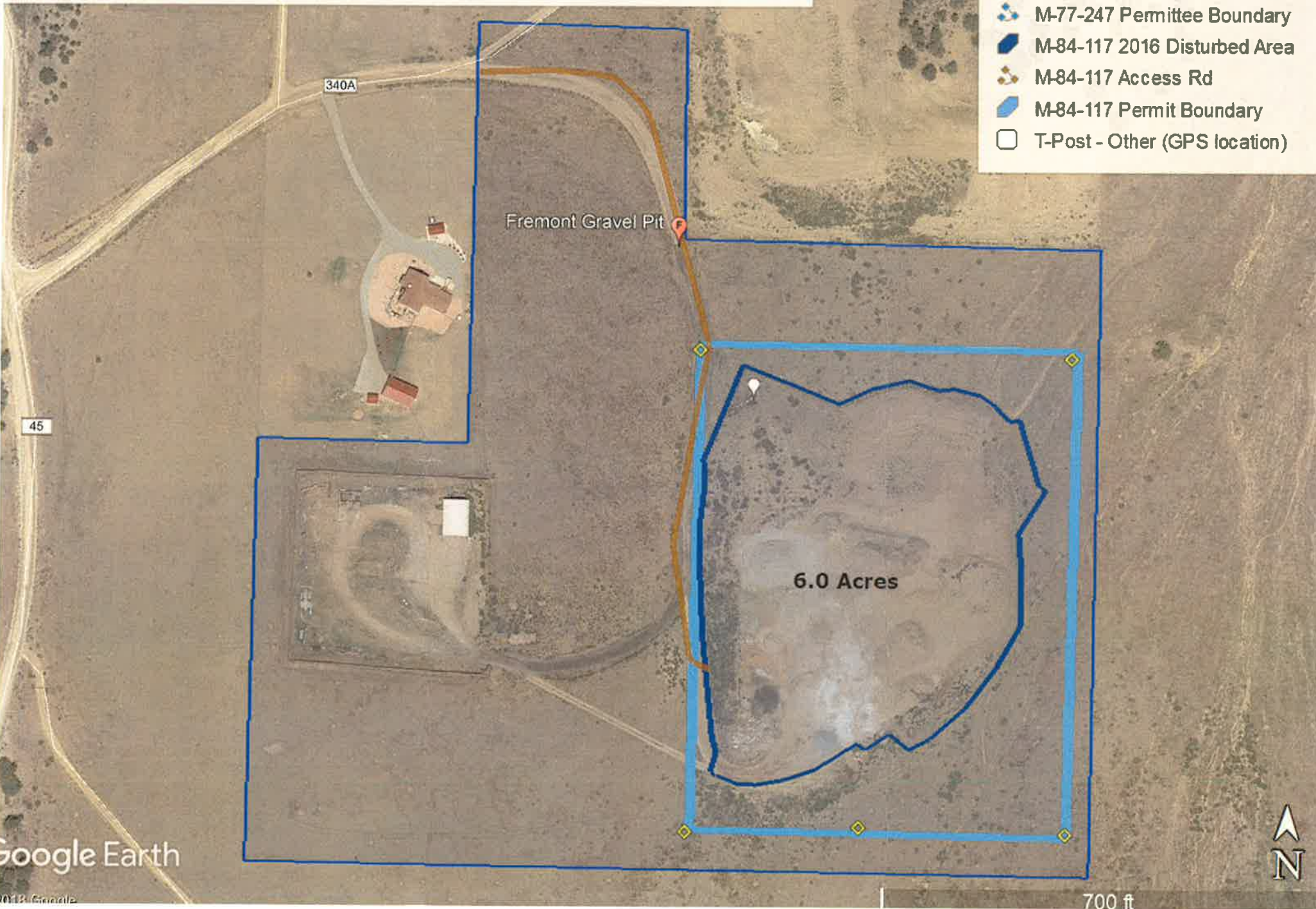


Figure #1: Map created from observations made during the inspection. The thicker purple line and the orange line represent the approximate permit boundary, the thinner light purple inspection polygon represents the extent of the affected area, the yellow star represents where the posted mine sign was located, the blue stars represent the locations of the five permit boundary markers, and the purple inspection points represent the locations of the various stockpiles of materials observed.

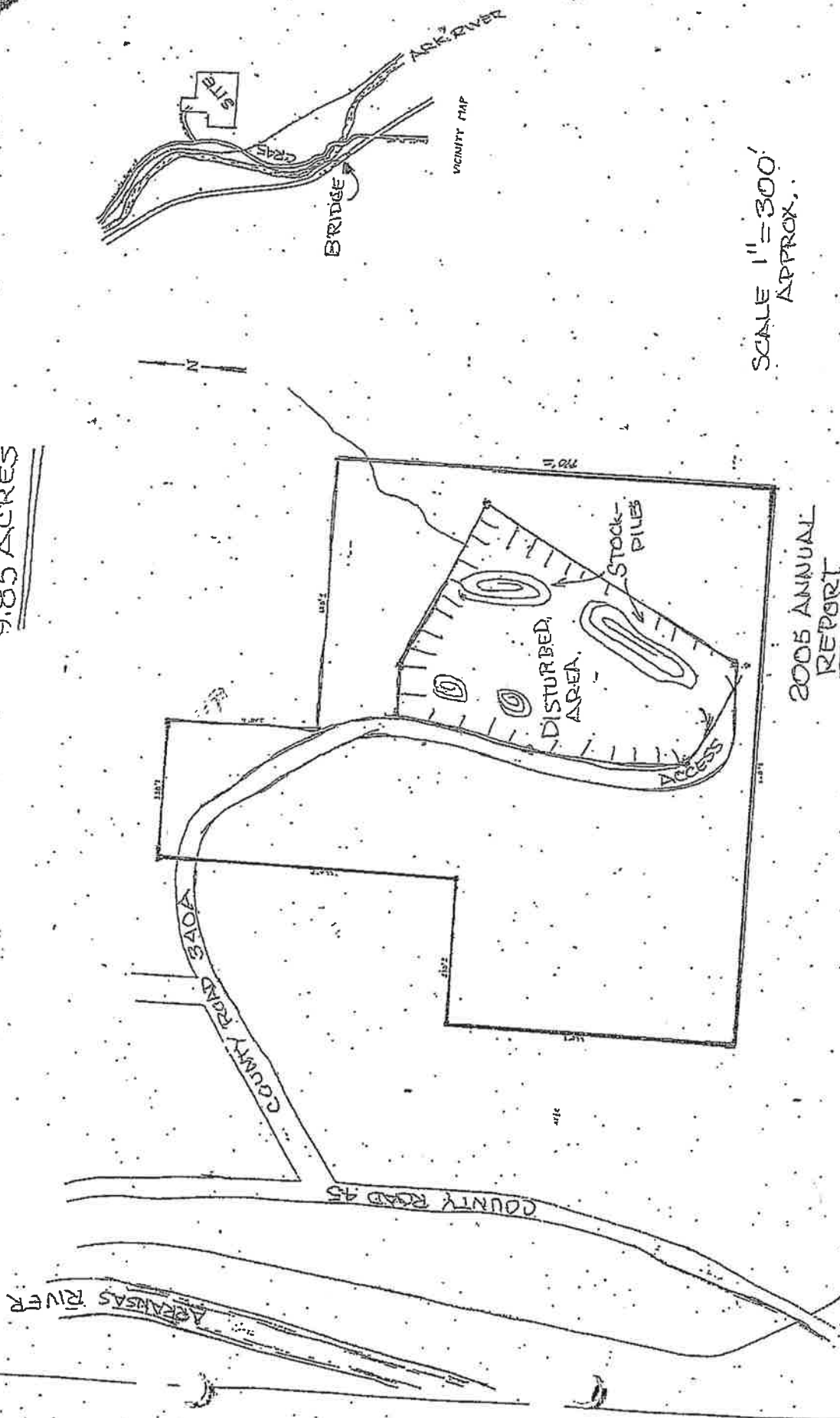
M-1984-117 Fremont Gravel Pit Post Inspection Map

Satellite Imagery from 6/15/2016

GPS data collected 11/7/2019 using Trimble Juno 3B



FREMONT COUNTY PIT
M-1984-117
9.85 ACRES



PHOTOGRAPHS



Photo #1: Mine sign, in accordance with Rule 3.1.12(1) along the access road; looking south.



Photo #2: T-post marking the NW corner of the permit boundary; looking south.



Photo #3: T-post marking the NE corner of the permit boundary, looking southwest.



Photo #4: T-post marking the SW corner of the permit boundary; looking to the northeast.



Photo #5: T-post marking the south-central permit boundary; looking north.



Photo #6: T-post marking the SE corner of the permit boundary; looking to the northwest.



Photo #7: View of the stormwater ditch running along the east side of the pit area; looking to the south.



Photo #8: View of the backfilled and graded area on the north side of the affected area; looking to the west.



Photo #9: View of the north side of the pit floor; looking east. The stockpiles of material that have been imported can be seen in the central of the right side of the photo (red and grey), along with stockpiles of what appears to be material sourced from the permit area in the background and the foreground.



Photo #10: View of the stockpiled recycled asphalt situated on the southern portion of the pit floor; looking to the northeast.



Photo #11: View of the concrete and large boulders used for county road projects, situated along the southwestern portion of the pit area; looking to the northwest.



Photo #12: View of the stockpiled material observed on the pit floor; looking to the south-southeast. Much of the material viewed are imported materials.