

Question 22.

2024 RECLAMATION MAPS

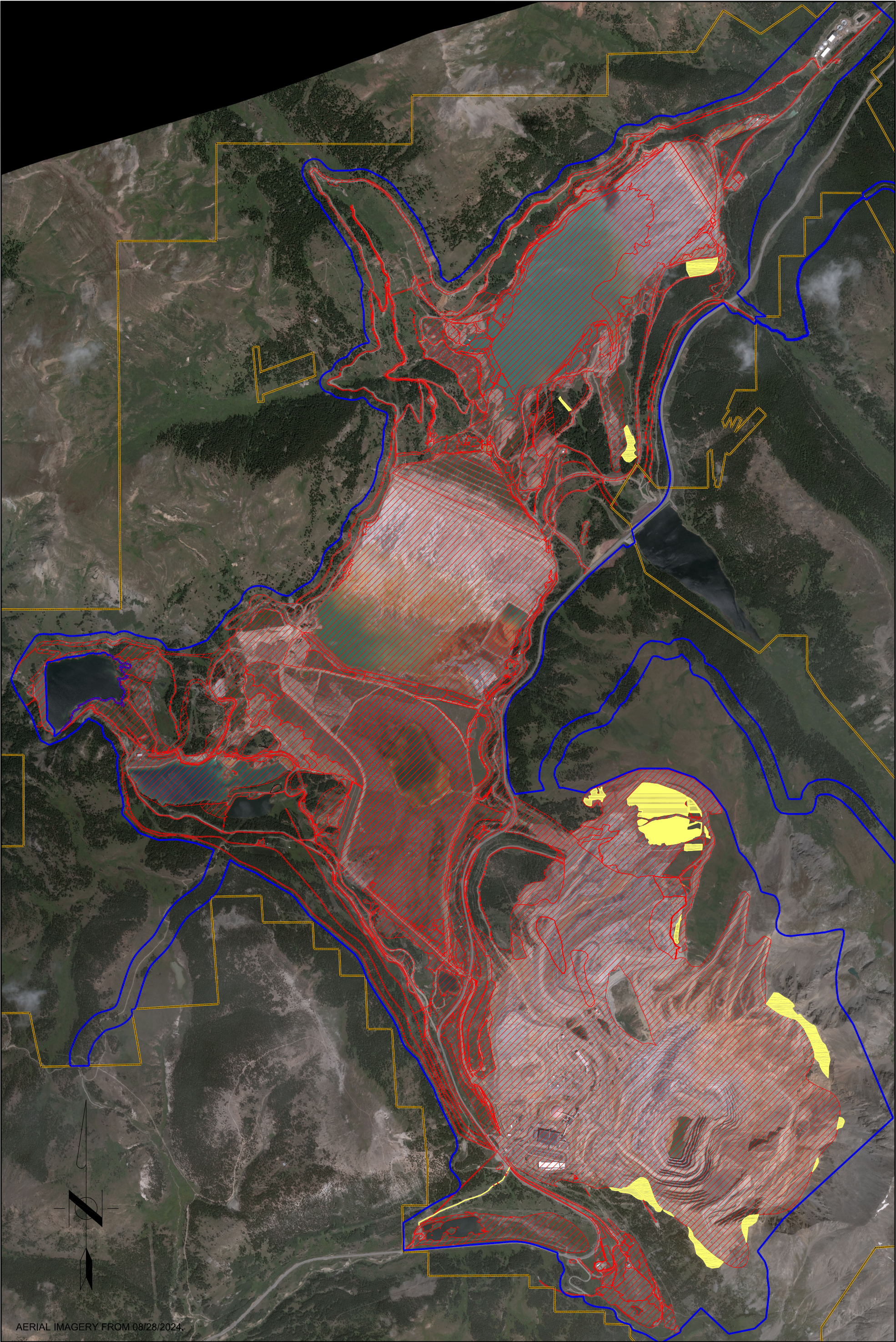
Map 1 – Depicts the permit boundary, current affected area boundary, the acreage currently affected, and any acreage disturbed in the reporting year.

Map 2 – Depicts the total acreage that has been reclaimed and the acreage where reclamation is in progress.

Map 3 – Depicts the acreage where reclamation is in progress that has been graded and/or covered with topsoil.

Map 4 – Depicts the acreage where reclamation is in progress that has been seeded, mulched, or fertilized.

Weed Control Maps – As described in question 14, maps describing where and what treatments were provided.

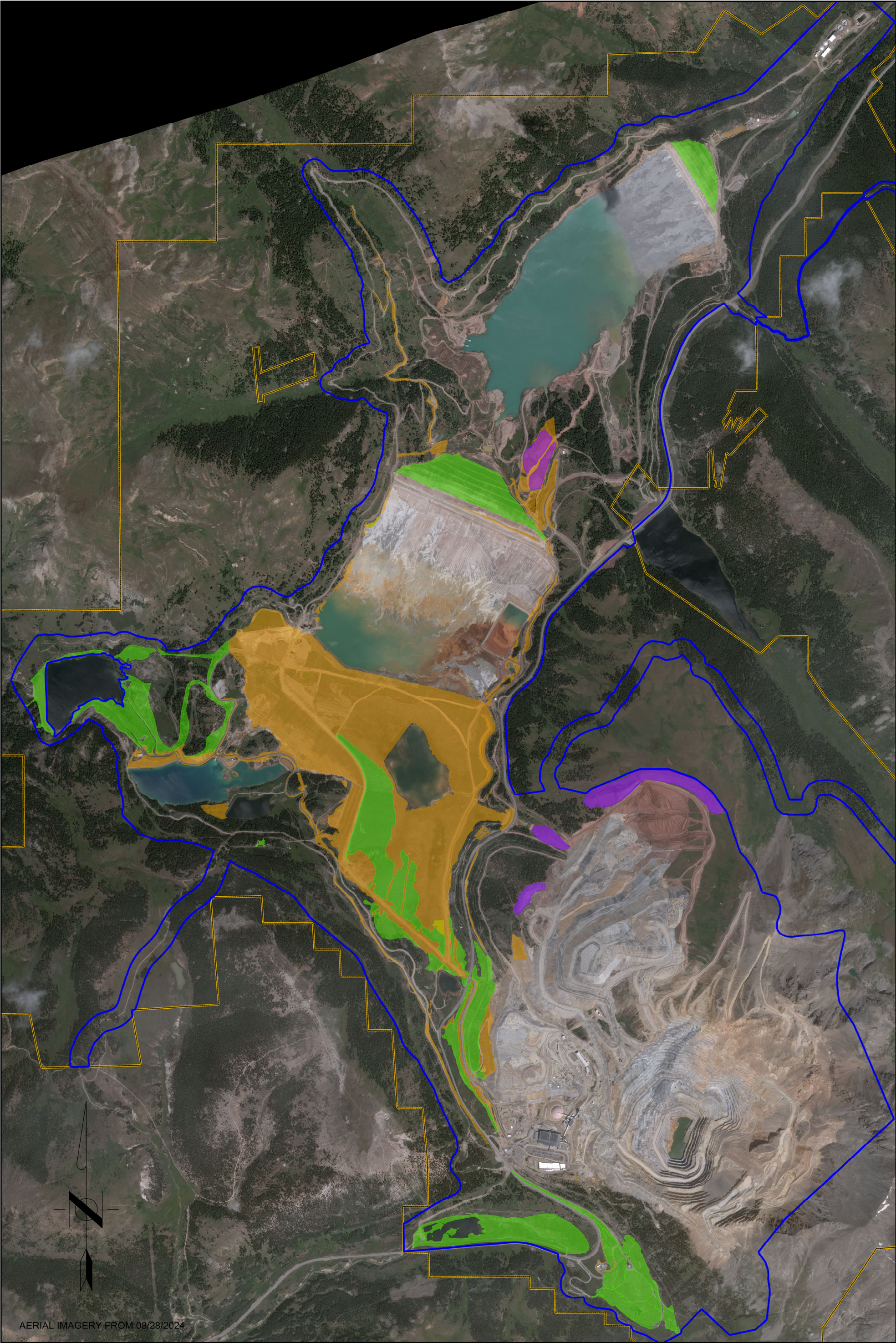


AERIAL IMAGERY FROM 08/28/2024.

LEGEND (SCALE 1" = 2,500')	
	2024 NEWLY AFFECTED AREA (101.3 ACRES)
	AREA AFFECTED BY MINING ACTIVITIES
	CLIMAX AFFECTED LAND BOUNDARY (AM-06)
	CLIMAX PROPERTY BOUNDARY

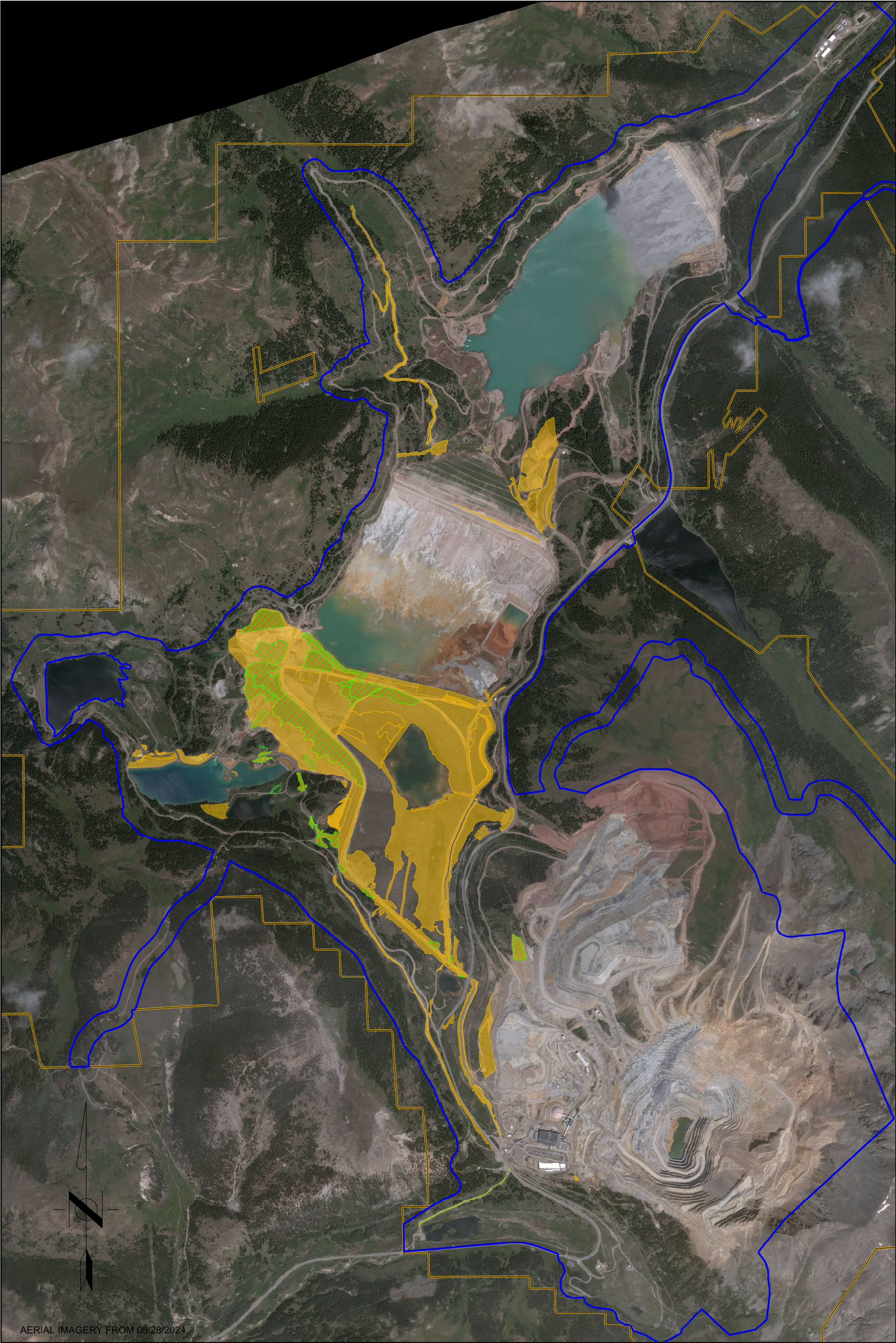
CLIMAX OPERATIONS	
Climax Molybdenum A Freeport-McMoRan Company	

DIVISION: ENVIRONMENTAL DEPT.	
AREA:	
TITLE:	2024 ANNUAL REPORT MAP 1 - AFFECTED AREAS
DWG. NO.	
REVISION:	2
SHT.	OF





AERIAL IMAGERY FROM 08/28/2024

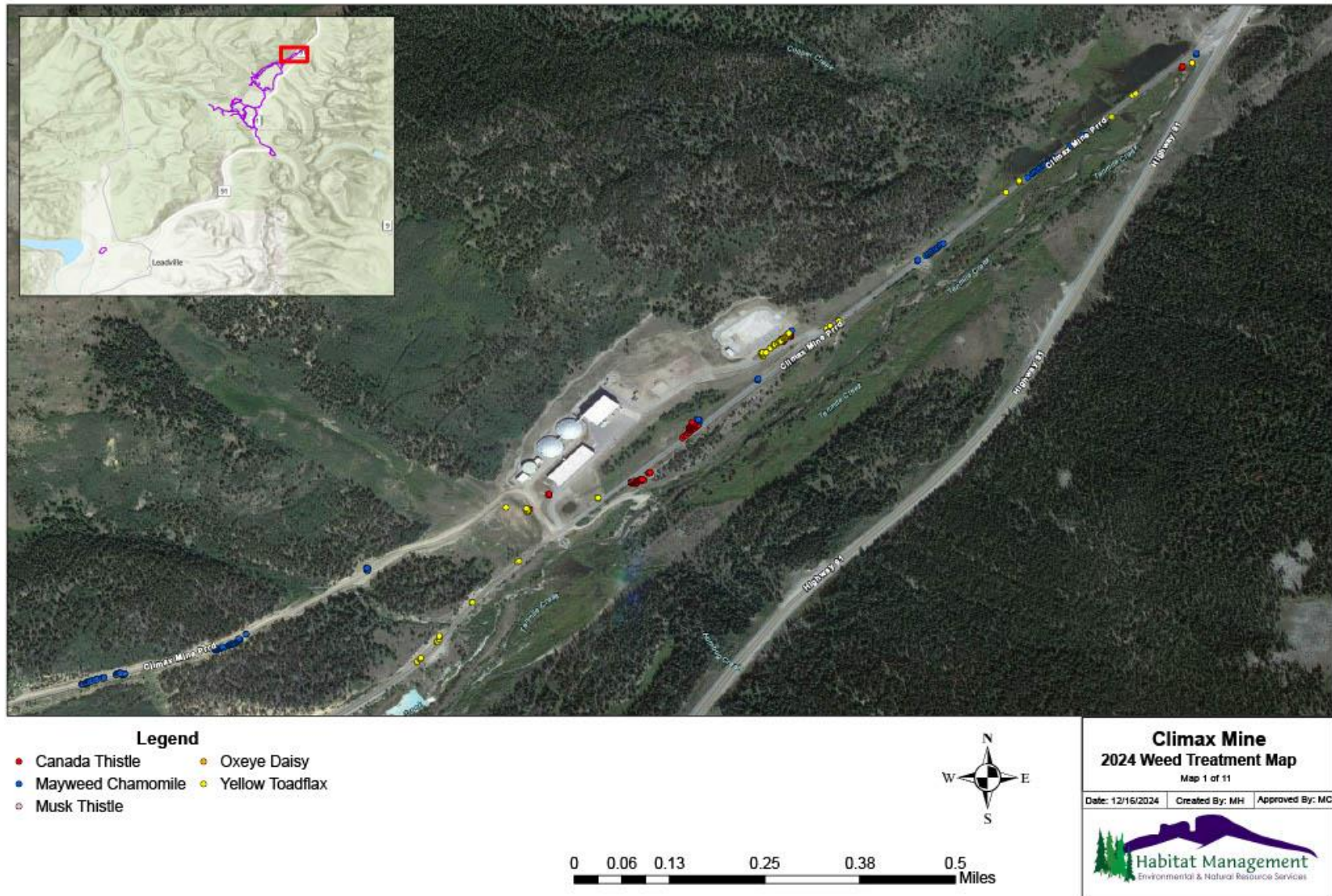
LEGEND (SCALE 1" = 2,500')		CLIMAX OPERATIONS		DIVISION: ENVIRONMENTAL DEPT.	
<div></div> BOND RELEASED RECLAMATION	<div></div> CLIMAX PROPERTY BOUNDARY	<div>Climax Molybdenum A Freeport-McMoRan Company</div>		AREA:	
<div></div> RECLAMATION IN PROGRESS	<div></div> CLIMAX AFFECTED LAND BOUNDARY (AM-06)			TITLE: 2024 ANNUAL REPORT	
<div></div> SOIL STOCKPILE FOR RECLAMATION				MAP 2 - RECLAMATION AREAS	
				DWG. NO.	
				REVISION: 1	
				SHT. OF	



AERIAL IMAGERY FROM 08/28/2024

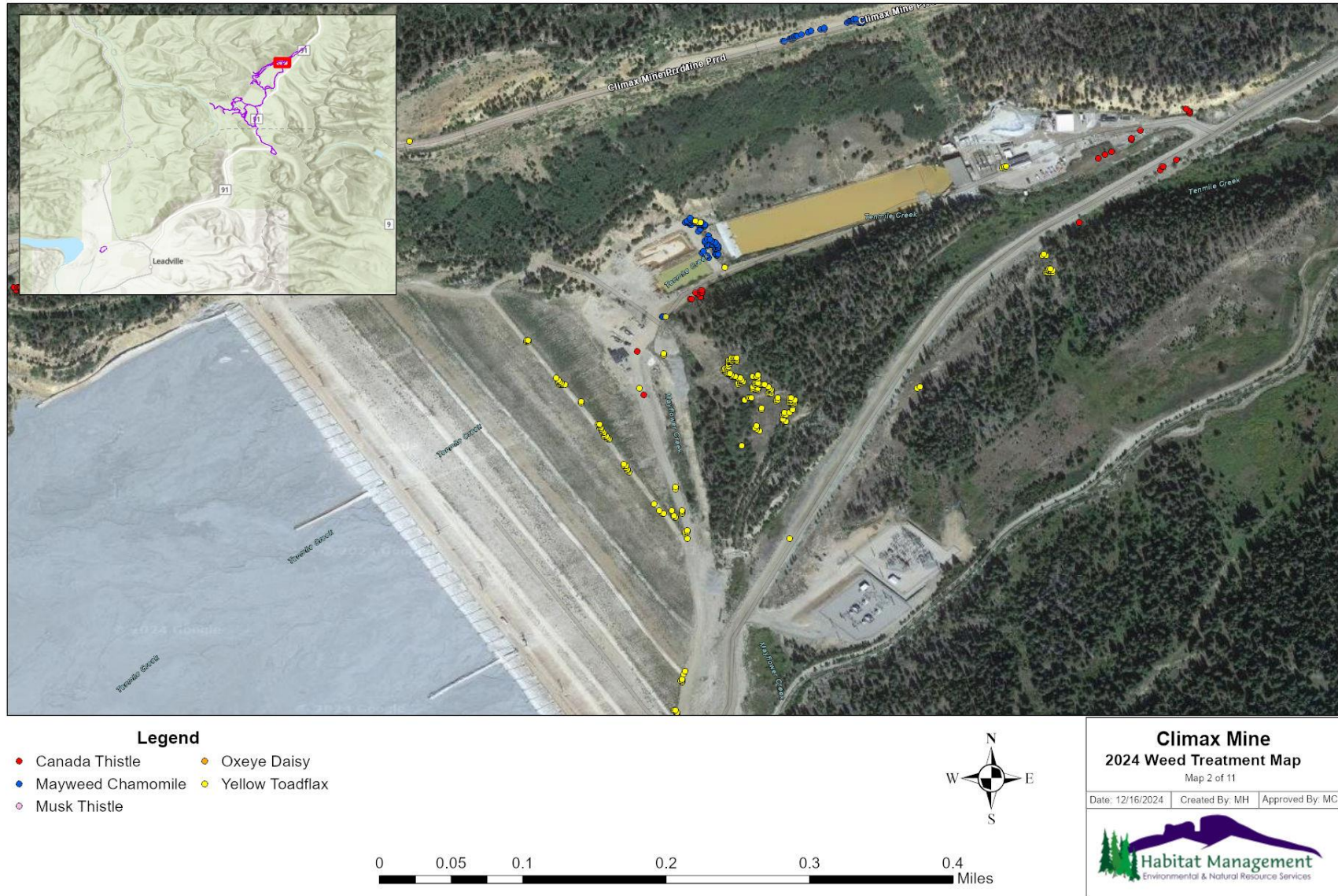
LEGEND (SCALE 1" = 2,500')		CLIMAX OPERATIONS		DIVISION: ENVIRONMENTAL DEPT.	
 GRADED	 CLIMAX PROPERTY BOUNDARY	 A Freeport-McMoRan Company		AREA:	
 TOPSOIL REPLACED				TITLE:	2024 ANNUAL REPORT MAP 3 - GRADING AND TOPSOIL
 CLIMAX AFFECTED LAND BOUNDARY (AM-06)				DWG. NO.	
				REVISION:	1
				SHT.	OF

Map 1: North Mine PDWTP & North Entrance

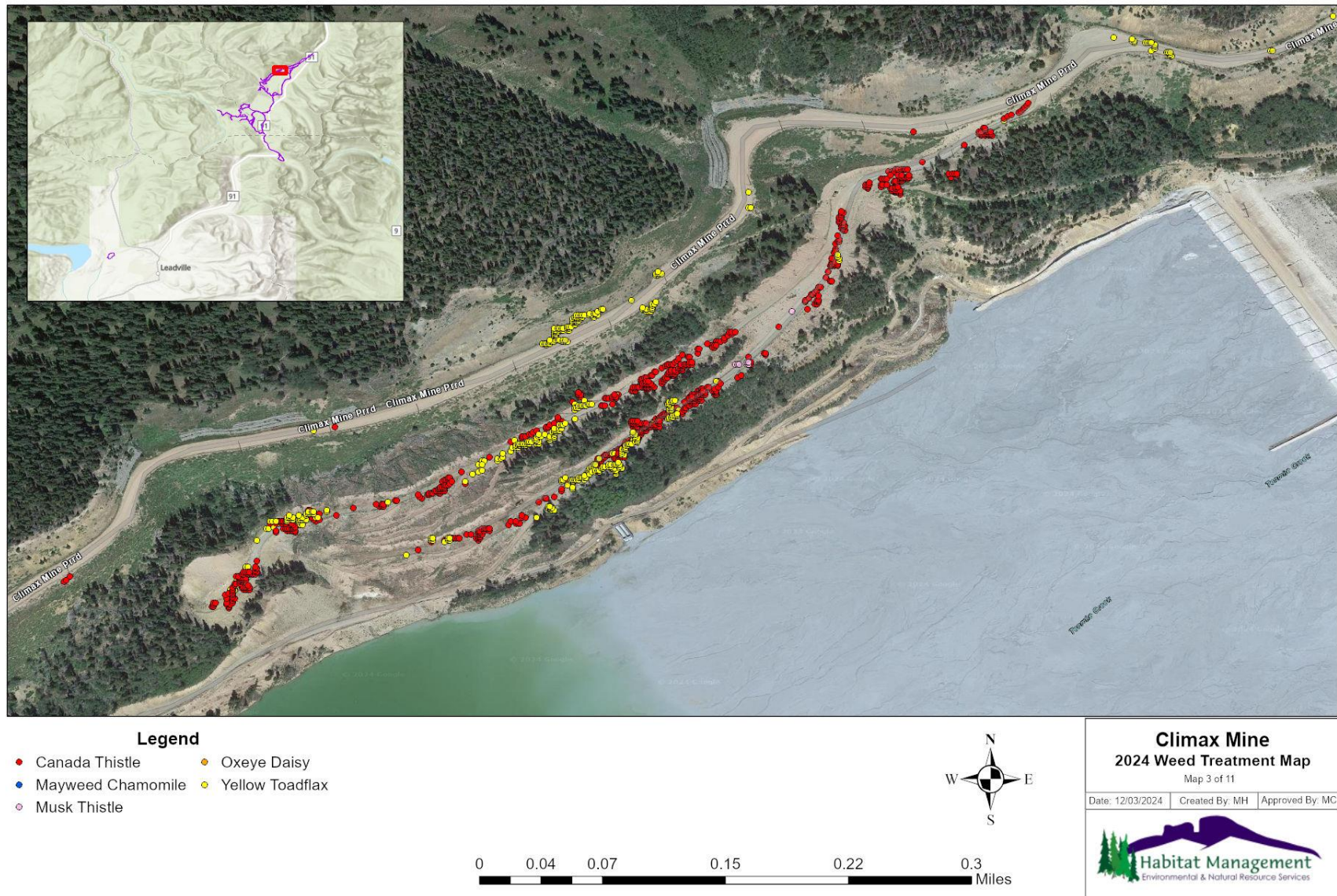


Climax Mine 2024 Integrated Weed Management Report

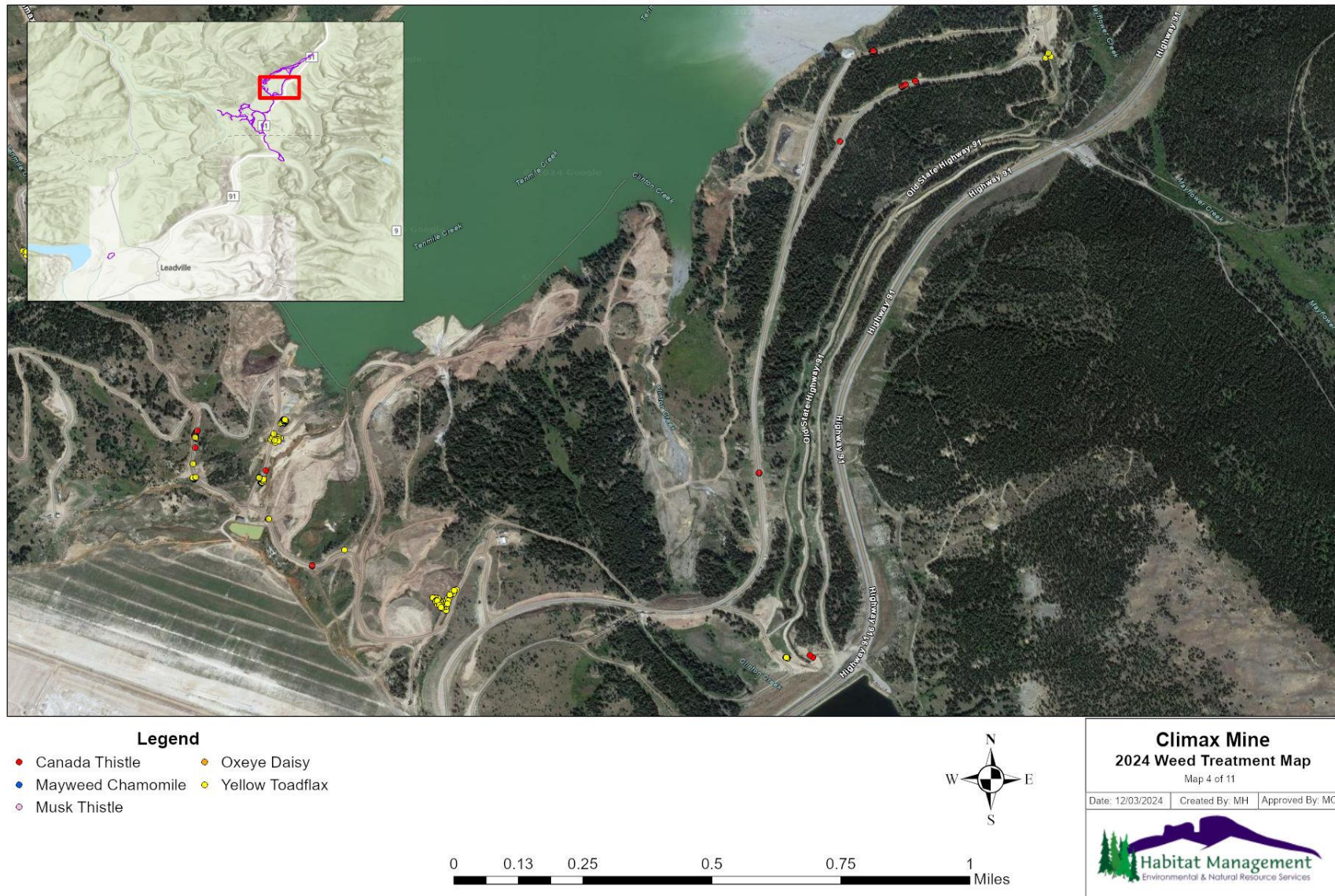
Map 2: 5 Dam & Mayflower Facilities



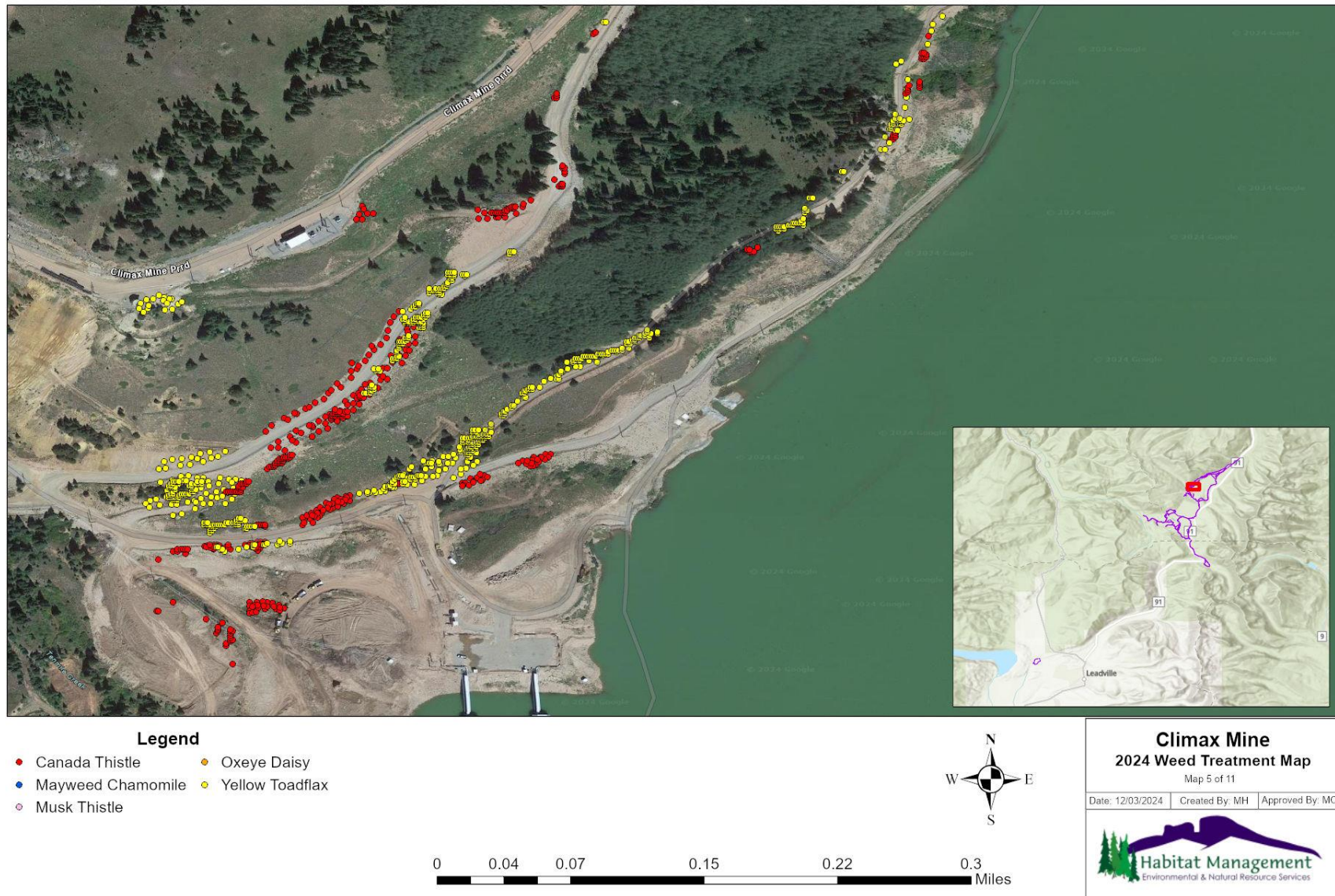
Map 3: Mayflower West Interceptor



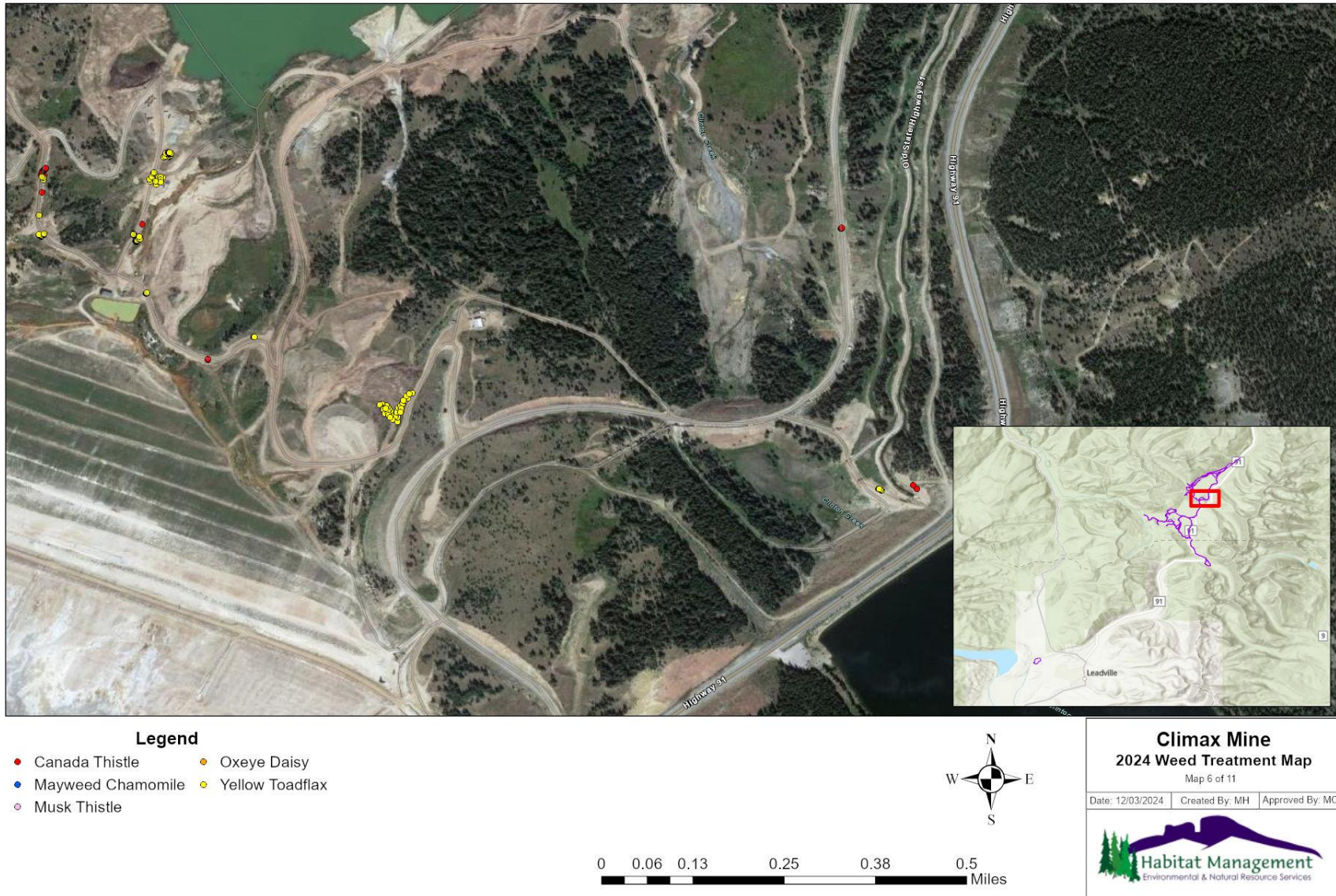
Map 4: Mayflower East Interceptor & 3 Dam



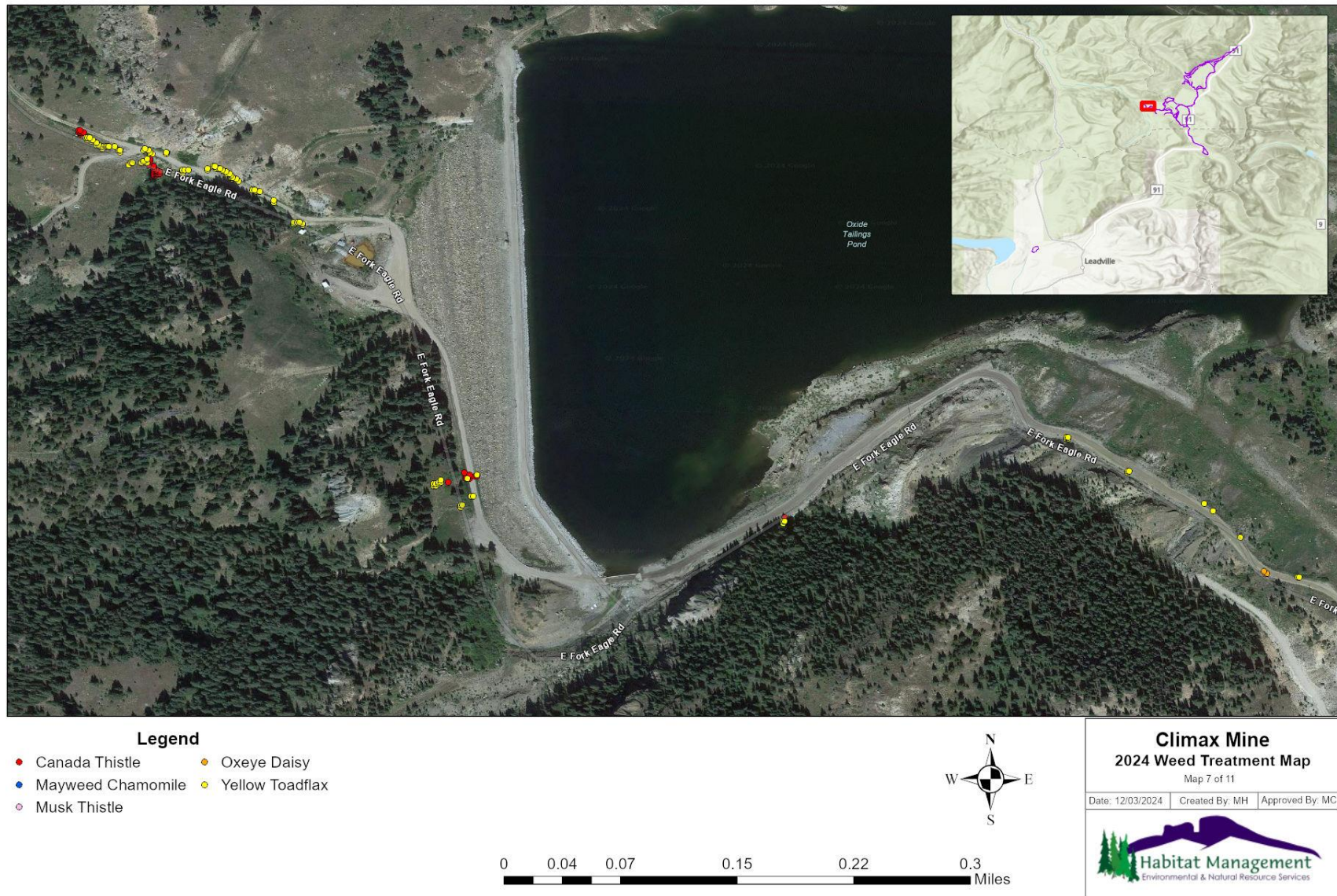
Map 5: Barge Terminal & Substation



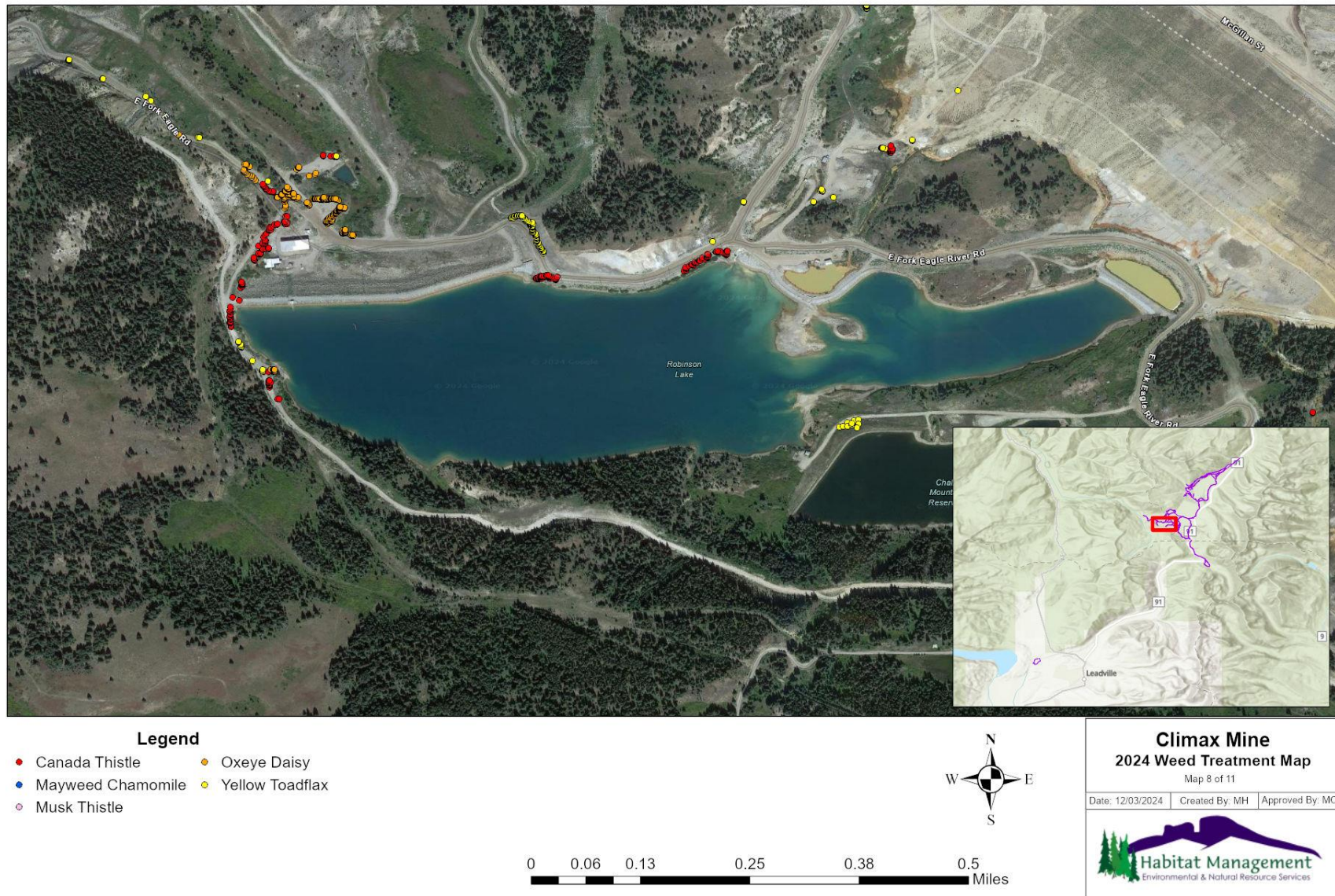
Map 6: Clinton Cutoff & Mayflower Topsoil Shop



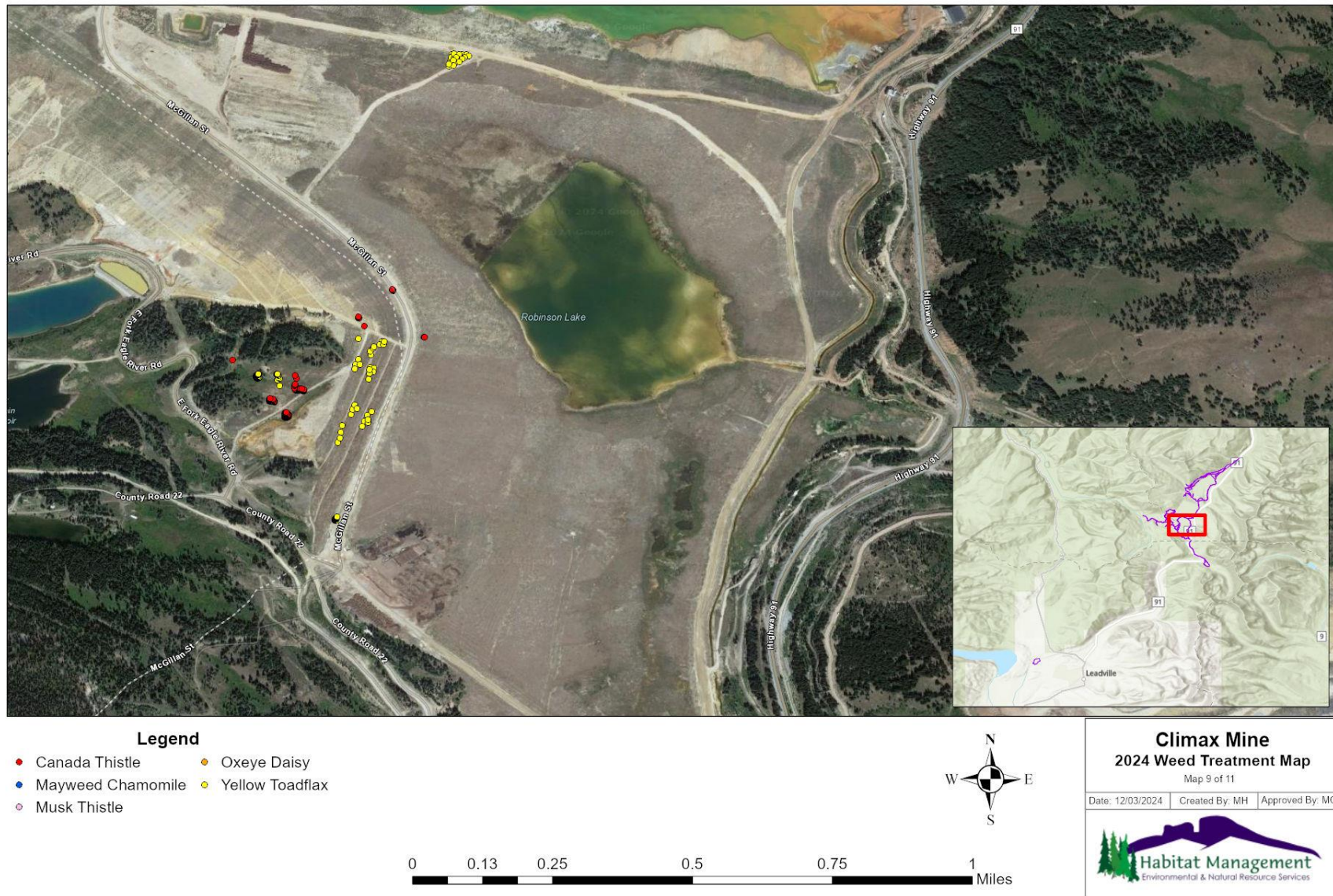
Map 7: Eagle Reservoir



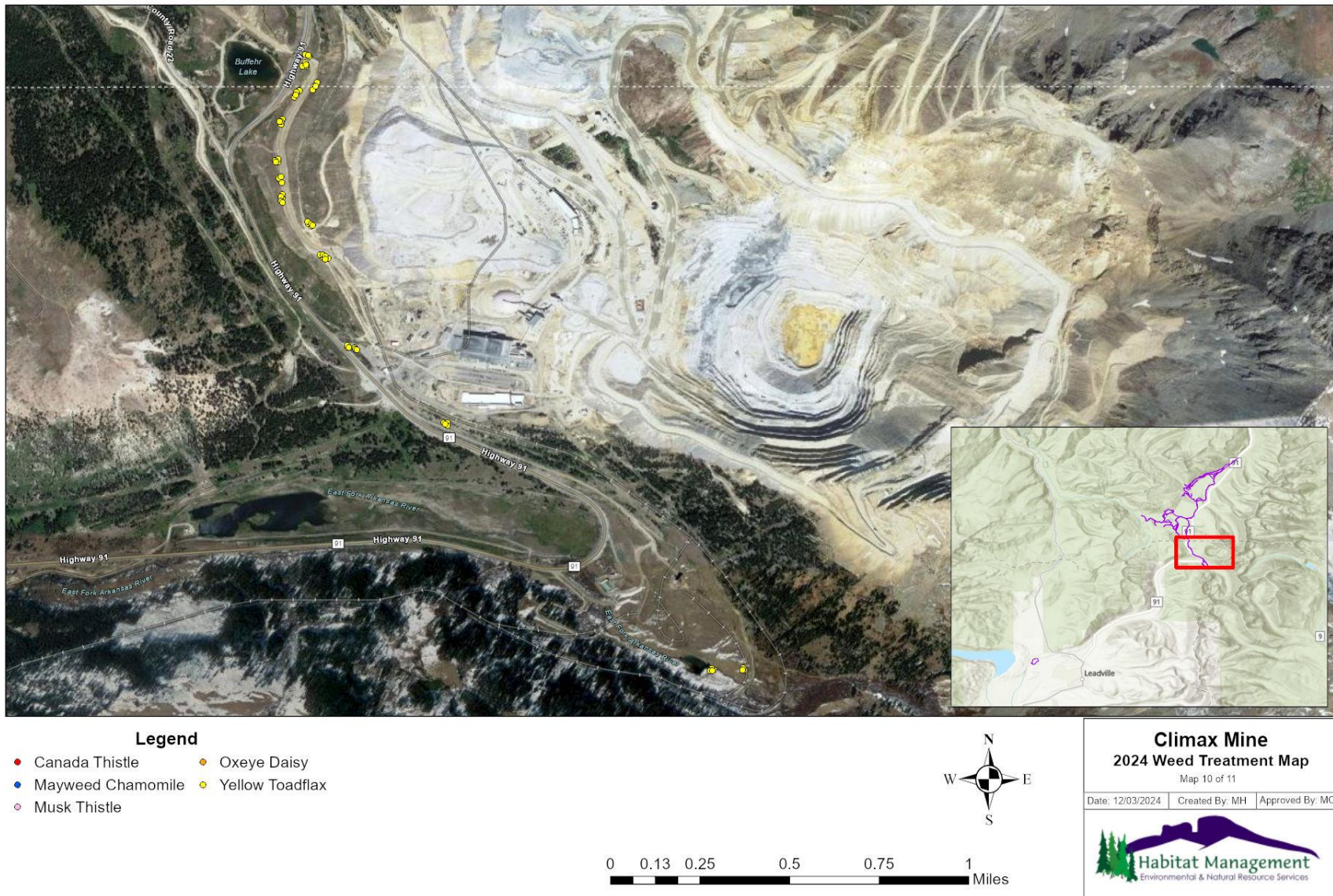
Map 8: North 1 Dam, Robinson Lake & Chalk Mountain Reservoir



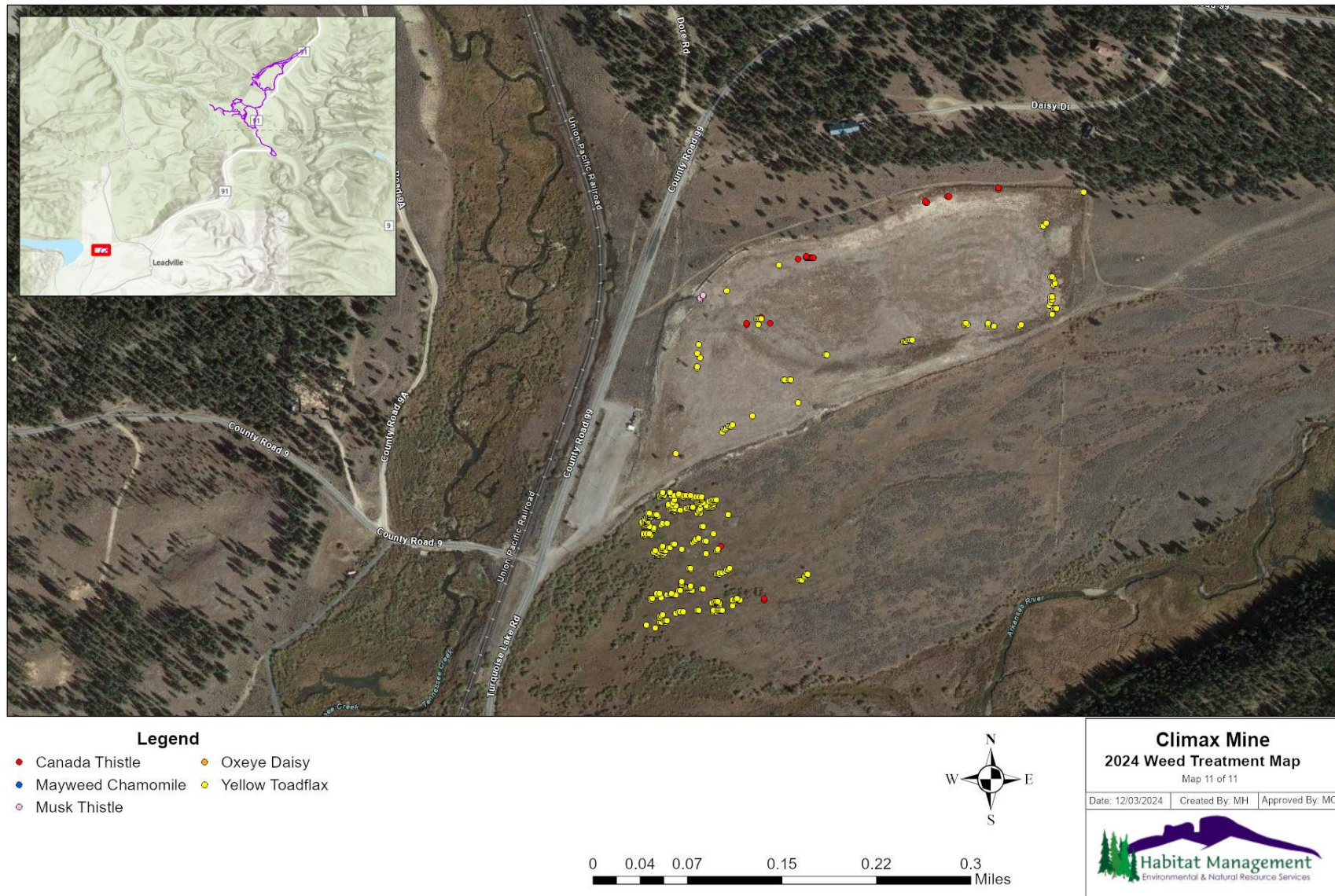
Map 9: South 1 Dam, Robinson Tailings Pond & STP



Map 10: Billy Blvd, Main Entrance Gate & Arkansas River



Map 11: Jones Gravel Pit & Property



Map 12: 2022 – 2024 Treatment Comparison Locations

