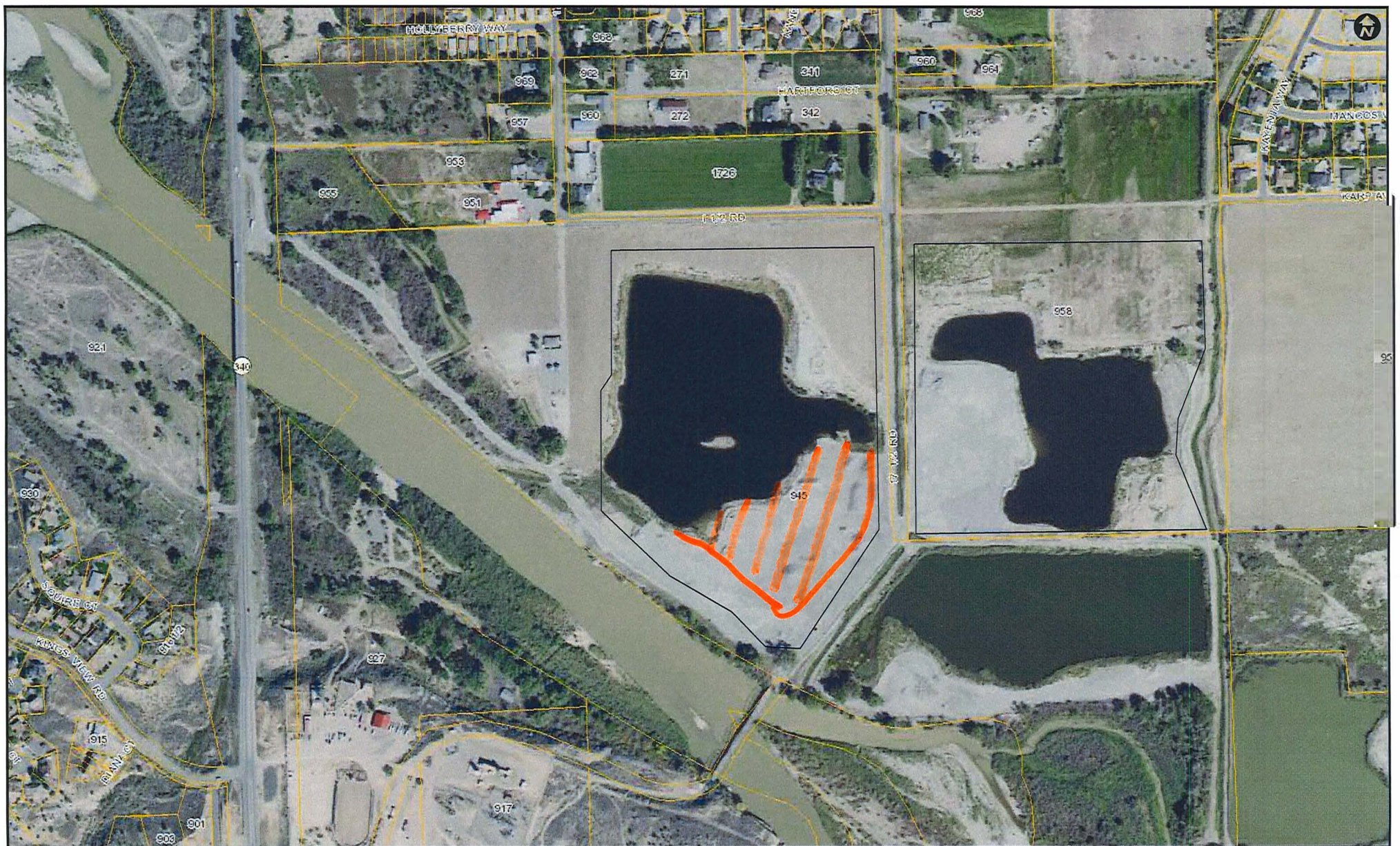


2025 Mining.

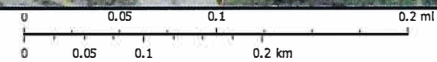


For planning and formulating, OCS is not intended to do, nor is it intended to be used for, the collection, storage, and dissemination of information in the areas of life and other information contained in official government records, such as the County Clerk and Recorder's office or the courts. In addition, the representation of location in this OCS cannot be substituted for actual field surveys.

The information contained herein is believed accurate and suitable for the intended uses, and subjects to the limitations, set forth above. Users County makes no warranty as to the accuracy or availability of any information contained herein. Users assume all risk and responsibility for any and all damages, including consequential damages, which may result from a user's use of this information.

DRMS Annual Report 2025

Print Date: February 10, 2020



Mesa County, Colorado
GIS/IT Department
903.999.5200 ext. 440