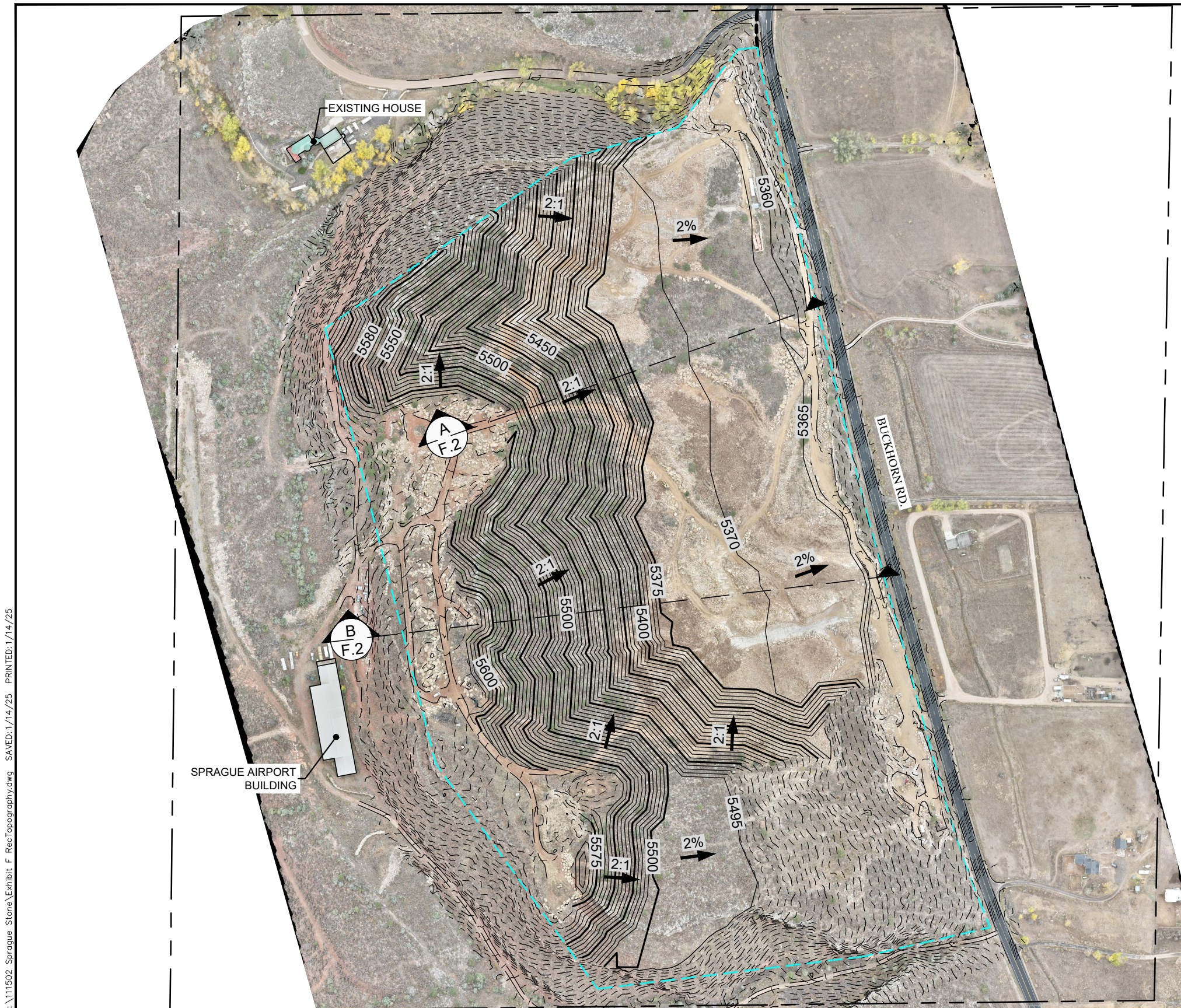


T:\111502 Sprague Stone\Exhibit F Rectopography.dwg    SAVERD:1/14/25    PRINTED:1/14/25

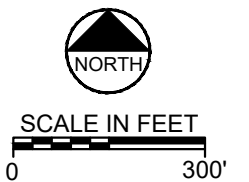
Project No. 111502



## LEGEND

- CONNIE F. PHILIP C. SPRAGUE PROPERTY  
BOUNDARY & SPRAGUE STONE LLC  
PERMIT BOUNDARY
- OCTOBER, 2024 SURVEY LIMIT
- EXISTING TOPOGRAPHIC CONTOURS
- === FINAL RECLAMATION CONTOURS

SURVEY COMPLETED BY: SCOTT FRY AND REVIEWED BY ROY MOESSER, P.L.S.  
FOR THE ANNUAL REPORT DATED DECEMBER, 2024.  
(1) JAY BLYTHE FIELD VERIFIED THE QUARRY ACTIVITIES ON 9/22/2024 AND  
CONFIRMED FIELD CONDITIONS ARE CONSISTENT WITH THE SUBMITTED



January 2025