



STATE OF  
COLORADO

Simmons - DNR, Leigh <leigh.simmons@state.co.us>

---

## C1980007, West Elk Mine, January Inspection Report

1 message

---

**Simmons - DNR, Leigh** <leigh.simmons@state.co.us>

Fri, Feb 7, 2025 at 5:43 PM

To: "Munz, Bob" <RobertMunz@coreresources.com>, "Wilczek, Jessica A." <JessicaWilczek@coreresources.com>

Cc: "Stafford, Natalie" <nataliestafford@coreresources.com>

The report is attached. Apologies for the delay.

Leigh Simmons  
Environmental Protection Specialist



**COLORADO**  
Division of Reclamation,  
Mining and Safety  
Department of Natural Resources

P [720.220.1180](tel:720.220.1180)

1313 Sherman Street, Room 215, Denver, CO 80203

[leigh.simmons@state.co.us](mailto:leigh.simmons@state.co.us) | <https://drms.colorado.gov>




**INSP-REPORTC\_C1980007\_LDS\_02072025052511.pdf**  
3577K



**PERMIT INFORMATION**

<b>Permit Number:</b> C-1980-007 <b>Mine Name:</b> West Elk Mine <b>Operator:</b> Mountain Coal Company, LLC <b>Operator Address:</b> Jessica Wilczek 5174 Highway 133 Somerset, CO 81434	<b>County:</b> Delta, Gunnison <b>Operation Type:</b> Underground <b>Permit Status:</b> Active <b>Ownership:</b> Private
	<b>Operator Representative Present:</b>  Natalie Stafford, Josh Thompson
<b>Operator Representative Signature: (Field Issuance Only)</b>  	

**INSPECTION INFORMATION**

<b>Inspection Start Date:</b> January 22, 2025 <b>Inspection Start Time:</b> 09:30 <b>Inspection End Date:</b> <b>Inspection End Time:</b>		<b>Inspection Type:</b> Coal Partial Inspection <b>Inspection Reason:</b> Normal I&E Program <b>Weather:</b> Cloudy	
<b>Joint Inspection Agency:</b>  None		<b>Joint Inspection Contacts:</b>	
<b>Post Inspection Agency:</b>  None		<b>Post Inspection Contacts:</b>	
<b>Inspector(s):</b>  Leigh Simmons	<b>Inspector's Signature:</b>  		<b>Signature Date:</b>  February 7, 2025

**Inspection Topic Summary**

NOTE: Y=Inspected N=Not Inspected R=Comments Noted V=Violation Issued NA=Not Applicable

Y - Air Resource Protection

N - Roads

N - Availability of Records

N - Reclamation Success

Y - Backfill &amp; Grading

N - Revegetation

Y - Excess Spoil and Dev. Waste

N - Subsidence

N - Explosives

N - Slides and Other Damage

Y - Fish &amp; Wildlife

R - Support Facilities On-site

Y - Hydrologic Balance

Y - Signs and Markers

R - Gen. Compliance With Mine Plan

N - Support Facilities Not On-site

R - Other

N - Special Categories Of Mining

R - Processing Waste

N - Topsoil

**COMMENTS**

This was a partial inspection by Leigh Simmons of the Division of Reclamation, Mining and Safety (Division). The weather was clear and dry, but very cold. The mine was active. The inspection was accompanied by Josh Thompson and Natalie Stafford of Mountain Coal Company (MCC).

**GENERAL MINE PLAN COMPLIANCE:**

Longwall mining of the LWE16 panel was in progress, between cross-cuts 11 and 10 on the head gate. The longwall had not been active in January.

Three development crews were working: in the B26 tail gate at around cross-cut 18, in the B26 head gate at around cross-cut 39, and in the B27 head gate at around cross-cut 23.

Contractors with Phoenix Mining continued to work on pillaring of the Sunset Mains, the job was expected to be completed by March 2025.

**OTHER (SPECIFY):**

The merger between Arch Resources and Consol Energy had been completed, to form a new entity: Core Natural Resources, Inc. No changes were made to Mountain Coal Company, which continues to be the operator of the West Elk Mine. MCC plan to update the Permit Application Packet (PAP) with up-to-date information about the corporate hierarchy and the officers and directors as soon as possible.

**PROCESSING WASTE/COAL MINE WASTE PILES – Rule 4.10 and 4.11****Drainage Control; Surface Stabilization; Placement:**

The processing plant continued to operate intermittently, to process material from the development sections. Waste material was being temporarily stockpiled on the RPE. The material was being compacted and graded to aid drainage.

The RPEE was not accessible, but the outcrops could be seen from across the river. The pile was snow-covered and there was no sign of any instability.

Stockpiled coal fines continued to be drawn down, with an estimated 64,000 tons remaining.

Number of Partial Inspection this Fiscal Year: 5

Number of Complete Inspections this Fiscal Year: 2

**SUPPORT FACILITIES - Rule 4.04:**

The pump had been set on the Box Canyon North well, after a series of technical complications with pipe and fitting compatibility. The pumphouse building was under construction at the time of the inspection. The aim was to bring the pump online by the end of January.

The project to line silo 2 was still in progress. Concrete from the silo was being brought to the RPE. Work had not begun on the loadout drainage project, but a contract for the earth work had been awarded. MCC expected to review the design provided by their engineering contractor. **If significant changes from the previously approved design are made the Permit Application Packet should be updated with a Minor Revision.**

**DOCUMENTS RECEIVED**

N/A

**OTHER (SPECIFY)**

N/A

**ENFORCEMENT ACTIONS/COMPLIANCE**

No enforcement actions were initiated as a result of this inspection, nor are any pending.

Number of Partial Inspection this Fiscal Year: 5

Number of Complete Inspections this Fiscal Year: 2

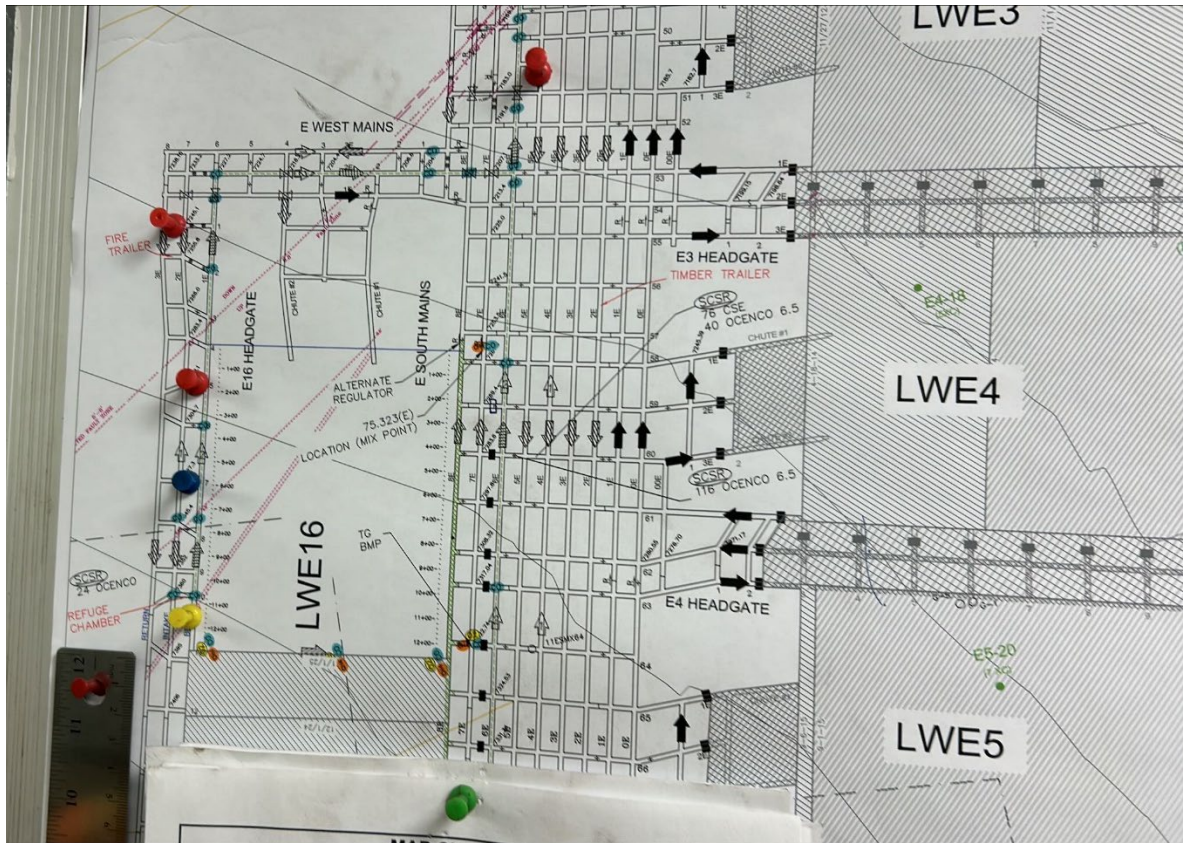
**PHOTOGRAPHS**

Figure 1: Mine map showing longwall progress

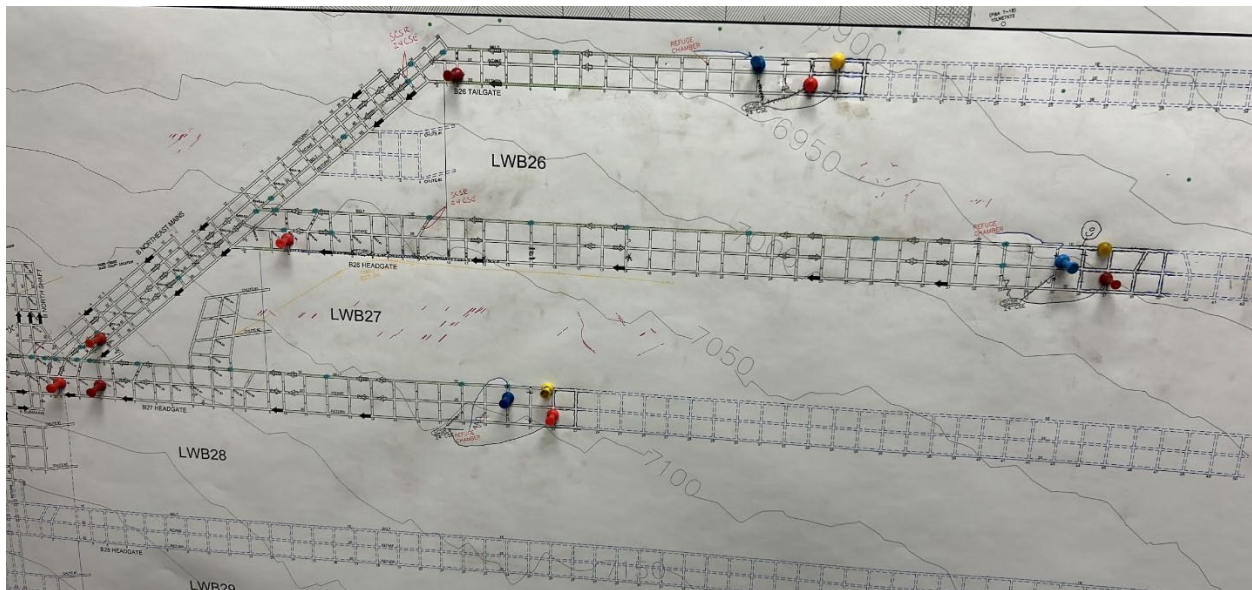


Figure 2: Mine map showing B-seam development progress

Number of Partial Inspection this Fiscal Year: 5

Number of Complete Inspections this Fiscal Year: 2



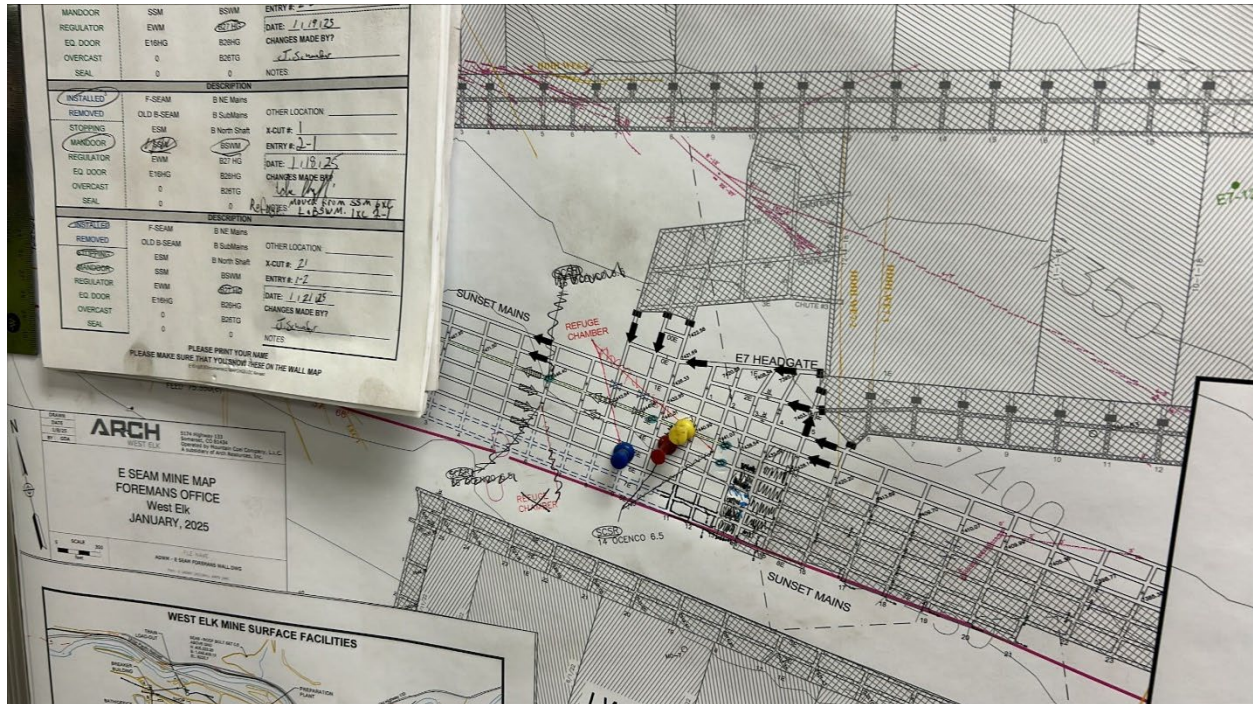


Figure 3: Mine map showing pillaring progress



Figure 4: RPEE

Number of Partial Inspection this Fiscal Year: 5

Number of Complete Inspections this Fiscal Year: 2





Figure 5: Silo 2



Figure 6: Loadout

Number of Partial Inspection this Fiscal Year: 5

Number of Complete Inspections this Fiscal Year: 2





Figure 7: Loadout access road



Figure 8: RPEE

Number of Partial Inspection this Fiscal Year: 5

Number of Complete Inspections this Fiscal Year: 2





*Figure 9: Processing waste*

Number of Partial Inspection this Fiscal Year: 5

Number of Complete Inspections this Fiscal Year: 2





Figure 10: BCN well pumphouse



Figure 11: Portal

Number of Partial Inspection this Fiscal Year: 5

Number of Complete Inspections this Fiscal Year: 2





*Figure 12: Run-of-mine coal stockpile*

Number of Partial Inspection this Fiscal Year: 5

Number of Complete Inspections this Fiscal Year: 2