



6473 County Road 120
Hesperus, CO 81326



970.385.4528 ext. 6540



mihael@summitmining.co



January 27th, 2025

State of Colorado
Division of Reclamation, Mining & Safety
1313 Sherman St., Room 215
Denver, CO 80203

Attn: Environmental Protection Specialist

Re: GCC Energy, LLC, King II Mine
CDRMS Permit # C-1981-035
Stoner Engineering: Quarterly Inspection: Refuse Pile 4th Quarter 2024

Mr. Wein:

Please find enclosed a copy of Stoner Engineering's Quarterly Inspection report of the King I mine refuse pile/embankment for the 4th Quarter of 2024.

Please contact me at the contact information listed in the header, or Jordan McCourt at jmccourt@gcc.com if you have any questions or require any additional information.

Sincerely,

Michael Dickson

Stoner Engineering & Surveying
Engineering, Testing & Surveying

Date: January 2, 2025

To: Jordan McCourt
Project Coordinator
GCC Energy, LLC
6473 County Road 120
Hesperus, CO 81326
(970) 385-4528



From: Ryan Griglak, P.E.
Project Manager
Stoner Engineering & Surveying

Re: King Coal I – Quarterly Waste Pile/Embankment Inspection

On December 23, 2024, Ryan Griglak, P.E. visited the GCC Energy, LLC King I Mine site to conduct the quarterly inspection of the coal waste pile/embankment. Mr. Griglak, P.E. has conducted inspections for the placement of earthwork/embankment fill material for numerous commercial, residential and municipal projects in which buildings, roadways and parking facilities were installed over the placed materials.

The south treated water ditch (Reach 10) and the north clear water ditch (Reach 1) appeared to be in generally good condition at the time of the inspection. The washed-out riprap of the south, treated water ditch east of the south haul road switchback has been repaired to prevent runoff from escaping the channel section (see Pic. 1). The upper section of Reach 10 where runoff washed riprap down the slope has also been improved by mixing angular riprap with the rounded to minimize future damage (see Pic. 2). These sections of the Reach 10 need to be monitored after storm events to ensure the repairs are adequate to minimize the potential for erosion.

The face of the upper waste embankment pile was found to be in generally good condition (see Pic. 3). There were no signs of instability or sloughing observed on the main waste embankment pile at the time of the inspection. The waste embankment pile level appears to be relatively unchanged since the previous inspection. The grading of the upper waste piles appears to direct surface runoff away from the face of the piles and the required berming is in place. The slope of the top of the existing pile is close to that defined in the Waste Bank Design produced by Don May, 1997.



Additional fill material has been placed on the lower waste pile since the previous inspection. The face of the lower pile was found to be in good condition with no signs of instability or sloughing observed (see Pic. 4). The face of the lower waste pile is at a consistent height and the required berming is in place at the top of the pile to direct runoff away from the face of the embankment pile.

The only structure with any proximity to the embankment material is the old, abandoned bath house which is no longer utilized.

The waste pile has been and continues to be constructed and maintained as specified in the design approved by the Division of Reclamation, Mining & Safety. Potential hazards to life and property are minimal due to the fact that GCC has moved most of their operations to their King II facility.

Please let me know if you have any additional questions or concerns in regards to the issues that are discussed above.

Sincerely,

A handwritten signature in blue ink, appearing to read "R. Griglak", is positioned above the printed name.

Ryan M. Griglak, P.E.
Project Manager



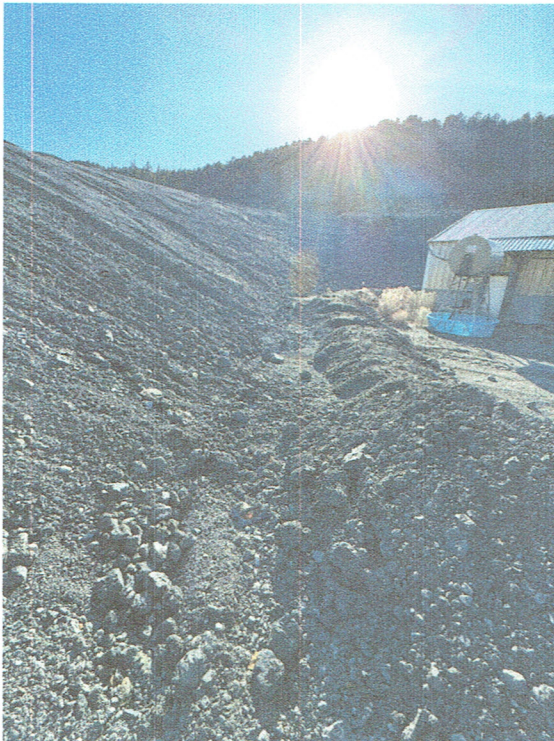
Pic. 1 –Reach 10, channel section repaired to prevent escape of runoff.



Pic. 2 – Reach 10, upper section channel riprap repaired.



Pic. 3 – Face of the upper waste pile is in good condition.



Pic. 4 – Face of the lower waste pile in generally good condition.