



STATE OF
COLORADO

Simmons - DNR, Leigh <leigh.simmons@state.co.us>

C1980007, West Elk Mine, November Inspection Report

Simmons - DNR, Leigh <leigh.simmons@state.co.us>

Mon, Nov 18, 2024 at 2:36 PM

To: "Wilczek, Jessica" <jwilczek@archrsc.com>

Attached

Leigh Simmons
Environmental Protection Specialist



COLORADO
Division of Reclamation,
Mining and Safety
Department of Natural Resources

P [720.220.1180](tel:720.220.1180)

1313 Sherman Street, Room 215, Denver, CO 80203

leigh.simmons@state.co.us | <https://drms.colorado.gov>




INSP-REPORTC_C1980007_LDS_11182024011653.pdf
3715K



PERMIT INFORMATION

Permit Number: C-1980-007 Mine Name: West Elk Mine Operator: Mountain Coal Company, LLC Operator Address: Jessica Wilczek 5174 Highway 133 Somerset, CO 81434	County: Delta, Gunnison Operation Type: Underground Permit Status: Active Ownership: Private
	Operator Representative Present: Josh Thompson
Operator Representative Signature: (Field Issuance Only) 	

INSPECTION INFORMATION

Inspection Start Date: November 13, 2024 Inspection Start Time: 11:00 Inspection End Date: Inspection End Time:		Inspection Type: Coal Partial Inspection Inspection Reason: Normal I&E Program Weather: Clear	
Joint Inspection Agency: None		Joint Inspection Contacts:	
Post Inspection Agency: None		Post Inspection Contacts:	
Inspector(s): Leigh Simmons	Inspector's Signature: 		Signature Date: November 18, 2024

Inspection Topic Summary

NOTE: Y=Inspected N=Not Inspected R=Comments Noted V=Violation Issued NA=Not Applicable

N - Air Resource Protection	N - Roads
N - Availability of Records	N - Reclamation Success
N - Backfill & Grading	N - Revegetation
N - Excess Spoil and Dev. Waste	N - Subsidence
N - Explosives	N - Slides and Other Damage
N - Fish & Wildlife	R - Support Facilities On-site
N - Hydrologic Balance	N - Signs and Markers
R - Gen. Compliance With Mine Plan	N - Support Facilities Not On-site
N - Other	N - Special Categories Of Mining
R - Processing Waste	N - Topsoil

COMMENTS

This was a partial inspection by Leigh Simmons of the Division of Reclamation, Mining and Safety (Division). The weather was clear and dry, but with some snow on the ground in shady spots. The mine was active. The inspection was accompanied by Josh Thompson of Mountain Coal Company (MCC).

GENERAL MINE PLAN COMPLIANCE:

Longwall mining of the LWE16 panel was in progress, at around cross-cut 13 on the head gate.

Three development crews were working: in the B26 tail gate at around cross-cut 5, in the B26 head gate at around cross-cut 22, and in the B27 head gate at around cross-cut 15.

Contractors with Phoenix Mining continued to work on pillaring of the Sunset Mains, the job was expected to be completed by March 2025.

PROCESSING WASTE/COAL MINE WASTE PILES – Rule 4.10 and 4.11**Drainage Control; Surface Stabilization; Placement:**

The processing plant was not operating at the time of the inspection but had operated briefly since the last inspection to wash a little roof rock. The two anticipated faults in LWE16, which may require the coal to be washed, had not yet been encountered.

There was no significant processing waste stored on the RPE. The surface of the RPEE was smooth, compact and graded to drain to the northwest. Material cleaned from the sediment ponds was draining on the northeast of the RPEE, and some new material had been mixed in. A fence had been installed above the area to protect wildlife from straying into it.

SUPPORT FACILITIES - Rule 4.04:

Work at the Deer Creek Shaft had been completed and the B- to E-seam shaft was functioning as intended.

The well permit for the Box Canyon North well had still not been issued, so no further progress had been made on the project.

MCC had solicited bids to begin work on the stormwater project at the train loadout but had not yet awarded the contract.

Number of Partial Inspection this Fiscal Year: 4

Number of Complete Inspections this Fiscal Year: 1

Work was in progress on silo 2. The contractors had constructed a scaffold outside the silo and cut a hole for access above the level of the hoppers and were working to construct platforms from timber and plywood inside the silo.

DOCUMENTS RECEIVED

N/A

OTHER (SPECIFY)

N/A

ENFORCEMENT ACTIONS/COMPLIANCE

No enforcement actions were initiated as a result of this inspection, nor are any pending.

Number of Partial Inspection this Fiscal Year: 4

Number of Complete Inspections this Fiscal Year: 1

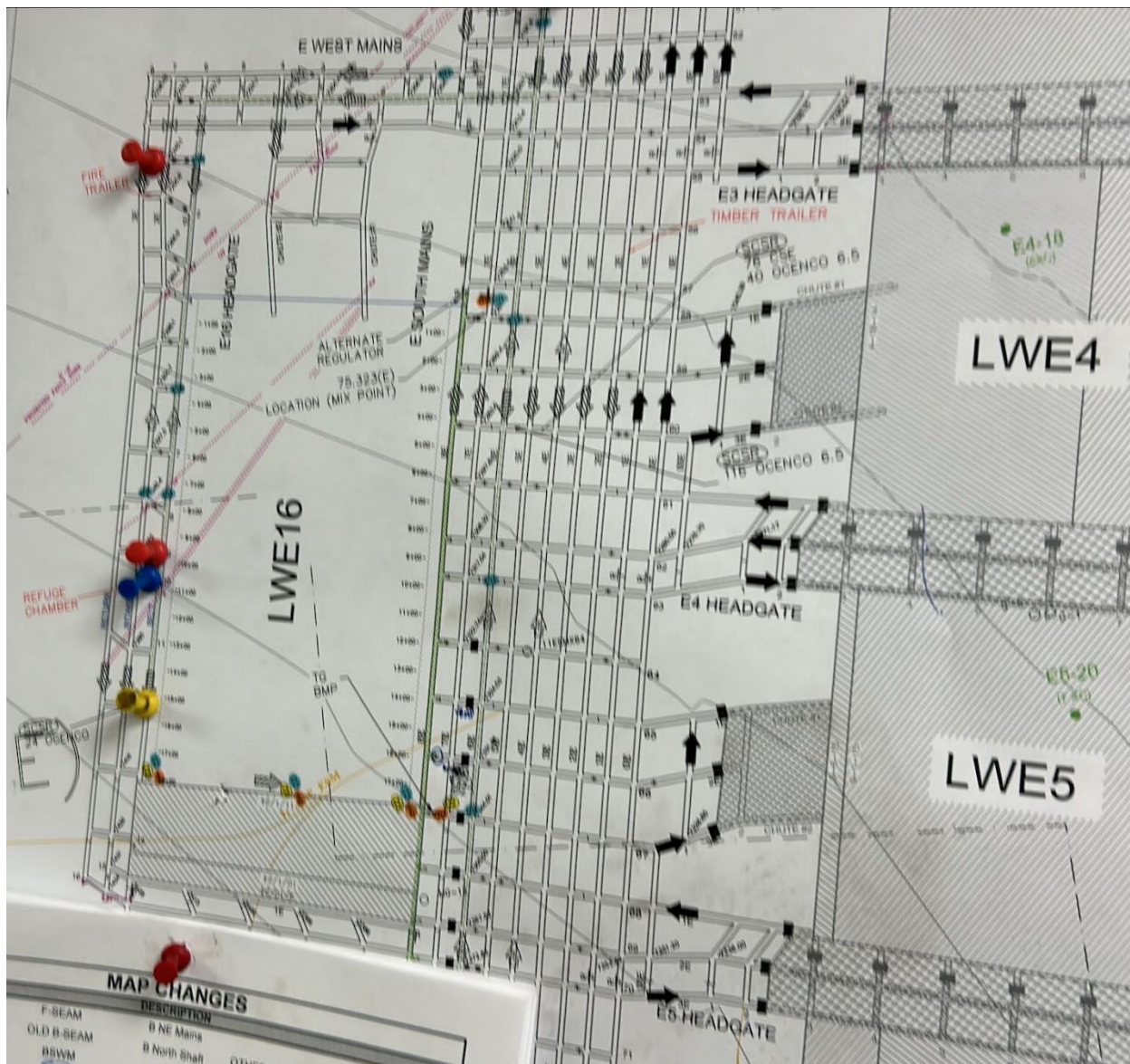
PHOTOGRAPHS

Figure 1: Mine map showing longwall progress in LWE16

Number of Partial Inspection this Fiscal Year: 4

Number of Complete Inspections this Fiscal Year: 1

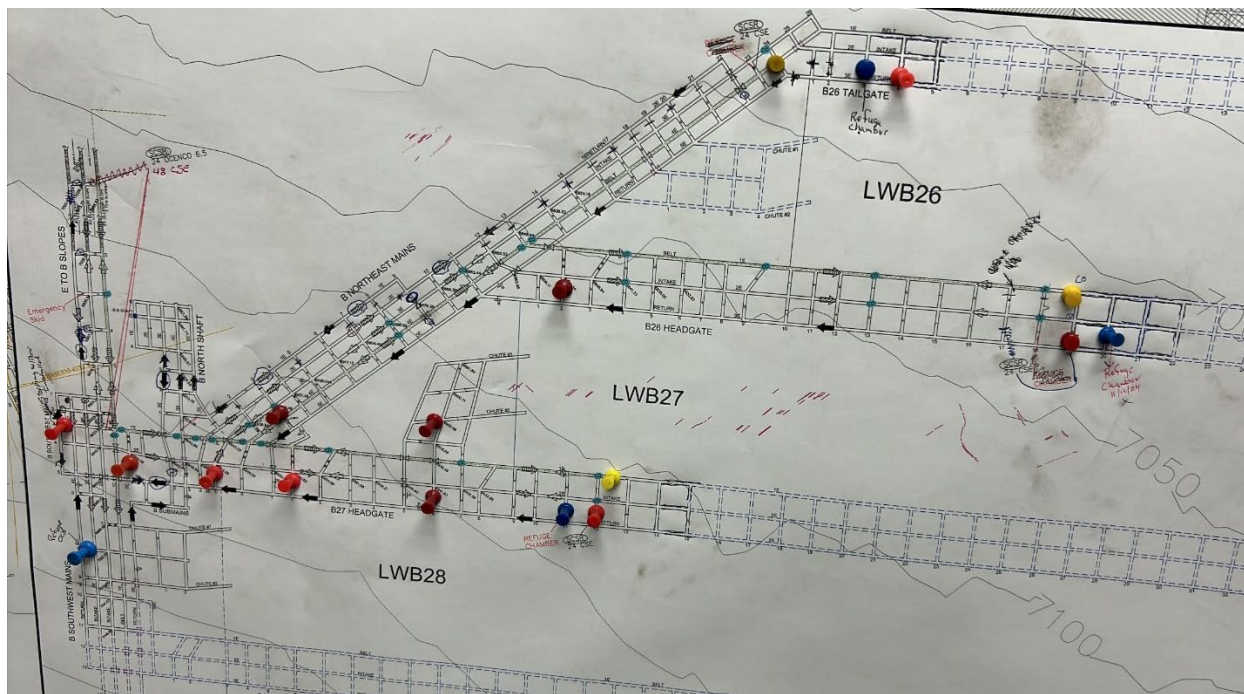


Figure 2: Mine map showing development progress in B-seam

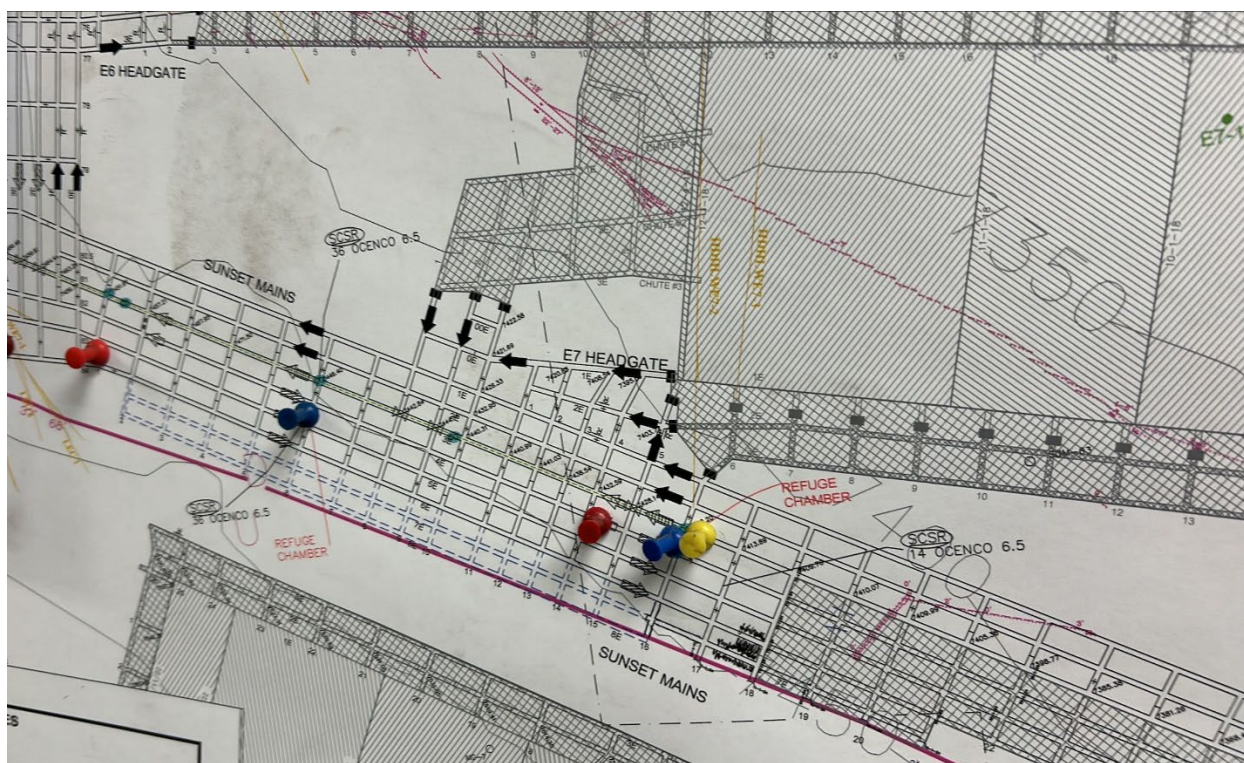


Figure 3: Mine map showing pillaring progress in Sunset Mains

Number of Partial Inspection this Fiscal Year: 4

Number of Complete Inspections this Fiscal Year: 1



Figure 4: Scaffold tower and access to silo 2

Number of Partial Inspection this Fiscal Year: 4

Number of Complete Inspections this Fiscal Year: 1



Figure 5: Inside of silo 2, looking up

Number of Partial Inspection this Fiscal Year: 4

Number of Complete Inspections this Fiscal Year: 1



Figure 6: Train loadout

Number of Partial Inspection this Fiscal Year: 4

Number of Complete Inspections this Fiscal Year: 1



Figure 7: Train loadout access road

Number of Partial Inspection this Fiscal Year: 4

Number of Complete Inspections this Fiscal Year: 1



Figure 8: Silos and conveyor from train loadout

Number of Partial Inspection this Fiscal Year: 4

Number of Complete Inspections this Fiscal Year: 1



Figure 9: Pond cleanings drying on RPEE, temporary orange fence in background



Figure 10: RPEE

Number of Partial Inspection this Fiscal Year: 4

Number of Complete Inspections this Fiscal Year: 1