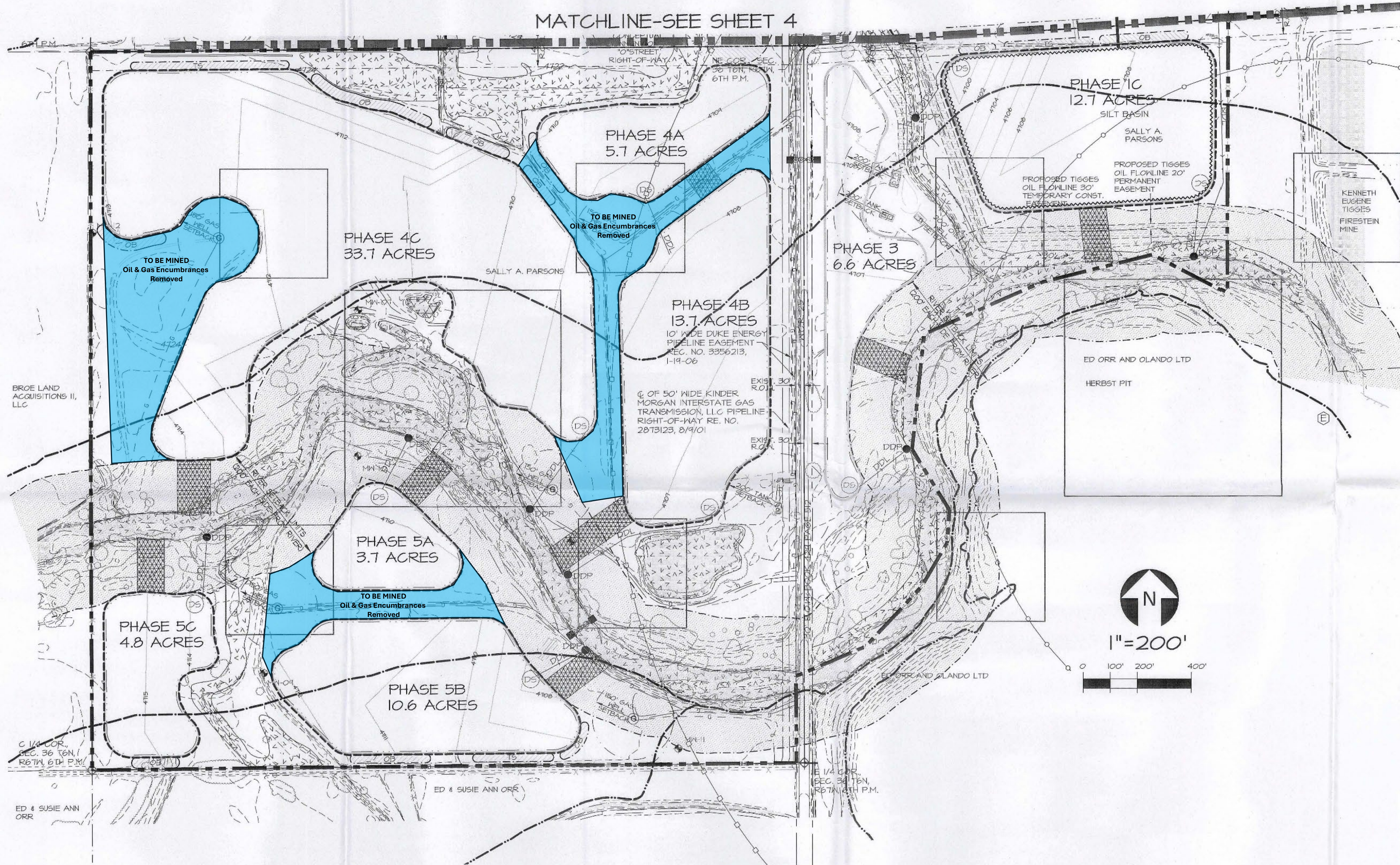


MATCHLINE-SEE SHEET 4



EAGLE NEST NOTE:

SEVERAL PROTECTION AND ENHANCEMENT MEASURES WILL BE INCORPORATED INTO THE OPERATION AND RECLAMATION PLANS TO PROTECT THE CURRENT ACTIVE BALD EAGLE NEST:

- NO MINING ACTIVITY WILL BE CONDUCTED WITHIN ½ MILE OF THE NEST FROM NOVEMBER 15 THROUGH JULY 31.
- NO MINING ACTIVITY WILL BE CONDUCTED WITHIN ¼ MILE OF THE NEST THROUGHOUT THE YEAR WITH THE EXCEPTION OF DEVELOPMENT OF AN 12.75 ACRE WETLAND SILT POND CREATED JUST NORTH OF THE RIVER. THE WORK TO CREATE THE POND WILL BE COMPLETED BY THE END OF THE 2 YEAR PERIOD AND WILL BE LIMITED TO AUGUST 15 TO NOVEMBER 15 TO PROTECT THE OCCURRED NEST SITE. A WETLAND BASIN WILL BE CREATED THROUGH MANAGEMENT OF WATER AND PLANTING OF NATIVE WETLAND PLANT SPECIES. THE PURPOSE OF THIS SILT BASIN IS NOT ONLY TO DISPOSE OF SMALLER MATERIALS BUT ALSO TO DEVELOP A WETLAND ADJACENT TO THE RIVER THAT WILL ATTRACT WATERFOWL AND OTHER WILDLIFE SPECIES USED AS A FOOD SOURCE FOR THE EAGLES.
- THE RIVER CORRIDOR WILL BE PROTECTED FROM ALL MINING ACTIVITY BY A 200 FOOT BUFFER.
- EXISTING WETLANDS IDENTIFIED IN 2007 WILL NOT BE IMPACTED BY MINING OPERATIONS UNDER THE CURRENT RECLAMATION PLAN. ANY FUTURE CHANGES TO THE RECLAMATION PLAN THAT REQUIRE AN UNAVOIDABLE IMPACT TO JURISDICTIONAL WETLANDS (SUCH AS A ROAD CROSSING) WOULD REQUIRE COORDINATION WITH THE US ARMY CORP OF ENGINEERS AND MAY INVOLVE OBTAINING THE NECESSARY PERMITS UNDER THE CLEAN WATER ACT.
- COORDINATION WILL BE CONDUCTED ANNUALLY WITH THE COLORADO DIVISION OF WILDLIFE TO MONITOR THE EAGLE NESTING LOCATION AND ACTIVITY. PROTECTION MEASURES WILL BE REVIEWED AND COORDINATED WITH THE COLORADO DIVISION OF WILDLIFE SHOULD THE EAGLES RELOCATE THEIR NEST.
- COORDINATION WILL BE CONDUCTED ANNUALLY WITH THE COLORADO DIVISION OF WILDLIFE TO MONITOR THE LOCATIONS AND ACTIVITY OF EXISTING AND NEW RAPTOR NESTS.

CERTIFICATION:

THIS MAP WAS PREPARED BY TETRA TECH IN COOPERATION WITH VECCHI & ASSOCIATES, LLC, DEERE AND AULT CONSULTANTS, INC., RESOURCE CONSERVATION PARTNERS, LLC, ENVIROGROUP LIMITED, AND QUEEN OF THE RIVER CONSULTANTS, INC. FOR LAFARGE WEST, INC.. LAFARGE WILL KEEP THE DIVISION OF MINERALS AND GEOLOGY INFORMED OF ANY CHANGES TO THE MINING OR RECLAMATION PLANS THROUGH ANNUAL REPORTS AND FILE TECHNICAL REVISIONS AND AMENDMENT APPLICATIONS AS NECESSARY THROUGHOUT THE LIFE OF THE MINE.

*Pamela Franch Hora*  
PAMELA FRANCH HORA, AICP  
SENIOR PLANNER, TETRA TECH

1-20-10  
DATE



## TETRA TECH

[www.tetrattech.com](http://www.tetrattech.com)

1900 S. Sunset Street, Ste. 1-F  
Longmont, Colorado 80501  
PHONE: (303) 772-5282 FAX: (303) 772-7039

MARK	DATE	DESCRIPTION	BY
1	10-09	INITIAL SUBMITTAL	MAI
2	1-20-10	ADEQUACY REVIEW RESPONSE	MAI
3	10-30-24	TR REQUEST FROM INSPECTOR	JMM

LAFARGE WEST, INC.

PARSONS MINE  
EXHIBIT C

MINING PLAN MAP (SOUTH HALF)

Project No. 133-4131.029.00
Designed By: LAFARGE
Drawn By: MAM
Checked By: PFH

5