



STATE OF  
COLORADO

Simmons - DNR, Leigh <leigh.simmons@state.co.us>

---

## C1980007, West Elk Mine, October Inspection Report

1 message

---

**Simmons - DNR, Leigh** <leigh.simmons@state.co.us>  
To: "Wilczek, Jessica" <jwilczek@archrsc.com>

Fri, Nov 1, 2024 at 5:04 PM

Attached

Leigh Simmons  
Environmental Protection Specialist



**COLORADO**  
Division of Reclamation,  
Mining and Safety  
Department of Natural Resources

P [720.220.1180](tel:720.220.1180)

1313 Sherman Street, Room 215, Denver, CO 80203

[leigh.simmons@state.co.us](mailto:leigh.simmons@state.co.us) | <https://drms.colorado.gov>



---


**INSP-REPORTC\_C1980007\_LDS\_11012024043556.pdf**  
7656K



**PERMIT INFORMATION**

<b>Permit Number:</b> C-1980-007 <b>Mine Name:</b> West Elk Mine <b>Operator:</b> Mountain Coal Company, LLC <b>Operator Address:</b> Jessica Wilczek 5174 Highway 133 Somerset, CO 81434	<b>County:</b> Delta, Gunnison <b>Operation Type:</b> Underground <b>Permit Status:</b> Active <b>Ownership:</b> Private
	<b>Operator Representative Present:</b>  Josh Thompson
<b>Operator Representative Signature: (Field Issuance Only)</b>  	

**INSPECTION INFORMATION**

<b>Inspection Start Date:</b> October 25, 2024 <b>Inspection Start Time:</b> 10:00 <b>Inspection End Date:</b> <b>Inspection End Time:</b>		<b>Inspection Type:</b> Coal Partial Inspection <b>Inspection Reason:</b> Normal I&E Program <b>Weather:</b> Clear	
<b>Joint Inspection Agency:</b>  None		<b>Joint Inspection Contacts:</b>  	
<b>Post Inspection Agency:</b>  None		<b>Post Inspection Contacts:</b>  	
<b>Inspector(s):</b>  Leigh Simmons	<b>Inspector's Signature:</b>  		<b>Signature Date:</b>  November 1, 2024

**Inspection Topic Summary**

NOTE: Y=Inspected N=Not Inspected R=Comments Noted V=Violation Issued NA=Not Applicable

N - Air Resource Protection

N - Roads

N - Availability of Records

R - Reclamation Success

N - Backfill &amp; Grading

N - Revegetation

N - Excess Spoil and Dev. Waste

N - Subsidence

N - Explosives

N - Slides and Other Damage

N - Fish &amp; Wildlife

R - Support Facilities On-site

R - Hydrologic Balance

N - Signs and Markers

R - Gen. Compliance With Mine Plan

N - Support Facilities Not On-site

N - Other

N - Special Categories Of Mining

R - Processing Waste

N - Topsoil

**COMMENTS**

This was a partial inspection by Leigh Simmons of the Division of Reclamation, Mining and Safety (Division). The weather was clear, warm and dry. The mine was active. The inspection was accompanied by Josh Thompson of Mountain Coal Company (MCC).

**HYDROLOGIC BALANCE - Rule 4.05**

Drainage Control 4.05.1, 4.05.2, 4.05.3; Siltation Structures 4.05.5, 4.05.6; Discharge Structures 4.05.7, 4.05.10; Diversions 4.05.4; Effluent Limits 4.05.2; Ground Water Monitoring 4.05.13; Surface Water Monitoring 4.05.13; Drainage – Acid and Toxic Materials 4.05.8; Impoundments 4.05.6, 4.05.9; Stream Buffer Zones 4.05.18:

Work to clean the sediment ponds had been completed. Material removed from the ponds had been transported by haul truck to the RPEE and was drying out. A survey of the cleaned ponds had been completed; results were expected to be included with the next quarterly report.

**GENERAL MINE PLAN COMPLIANCE:**

The new Air Emissions permit for the mine had been issued.

Longwall mining of the LWE16 panel was in progress, between cross-cuts 14 and 13 on the head gate.

Three development crews were working: in the B26 tail gate, in the B26 head gate, and in the B27 head gate.

Contractors with Phoenix Mining continued to work on pillaring of the Sunset Mains, the job was expected to be completed by March 2025.

**PROCESSING WASTE/COAL MINE WASTE PILES – Rule 4.10 and 4.11**

Drainage Control; Surface Stabilization; Placement:

The processing plant was not operating at the time of the inspection, although two faults were anticipated in LWE16, which may require the coal to be washed.

Processing waste stored on the RPE had been transported to the RPEE. The surface of the RPEE was smooth, compact and graded to drain to the northwest. Material cleaned from the sediment ponds was draining on the northeast of the RPEE, but all other material had been compacted. Topsoil had been stripped from the eastern

Number of Partial Inspection this Fiscal Year: 3

Number of Complete Inspections this Fiscal Year: 1

edge of the RPEE, and some large boulders had been excavated for use in the down drain.

**RECLAMATION SUCCESS - Rule 4.15, Rule 3:**

Out slopes on the RPEE had been graded and topsoiled. Straw wattles had been placed along the contour to reduce the effective slope length for surface water runoff. Some of the wattles had slipped and should be replaced.

The booster pumphouse for the BCN well had been installed next to the FW-1 pond, but the connections had not yet been completed. MCC were still waiting on a well permit for the BCN well before setting a pump on the well and completing the pipeline project.

**SUPPORT FACILITIES - Rule 4.04:**

Work was almost complete at the Deer Creek shaft.

Work had begun on Silo 2. The top of the concrete silo had been sealed and protected. The inside of the silo had been whipped with air hoses to clean and prepare the surface. The next step will be to remove a cone and cut a hole above the false floor to allow access, then assemble slip-form scaffolding inside the silo. The aim was to begin pumping concrete in December.

**DOCUMENTS RECEIVED**

N/A

**OTHER (SPECIFY)**

N/A

**ENFORCEMENT ACTIONS/COMPLIANCE**

No enforcement actions were initiated as a result of this inspection, nor are any pending.

Number of Partial Inspection this Fiscal Year: 3

Number of Complete Inspections this Fiscal Year: 1



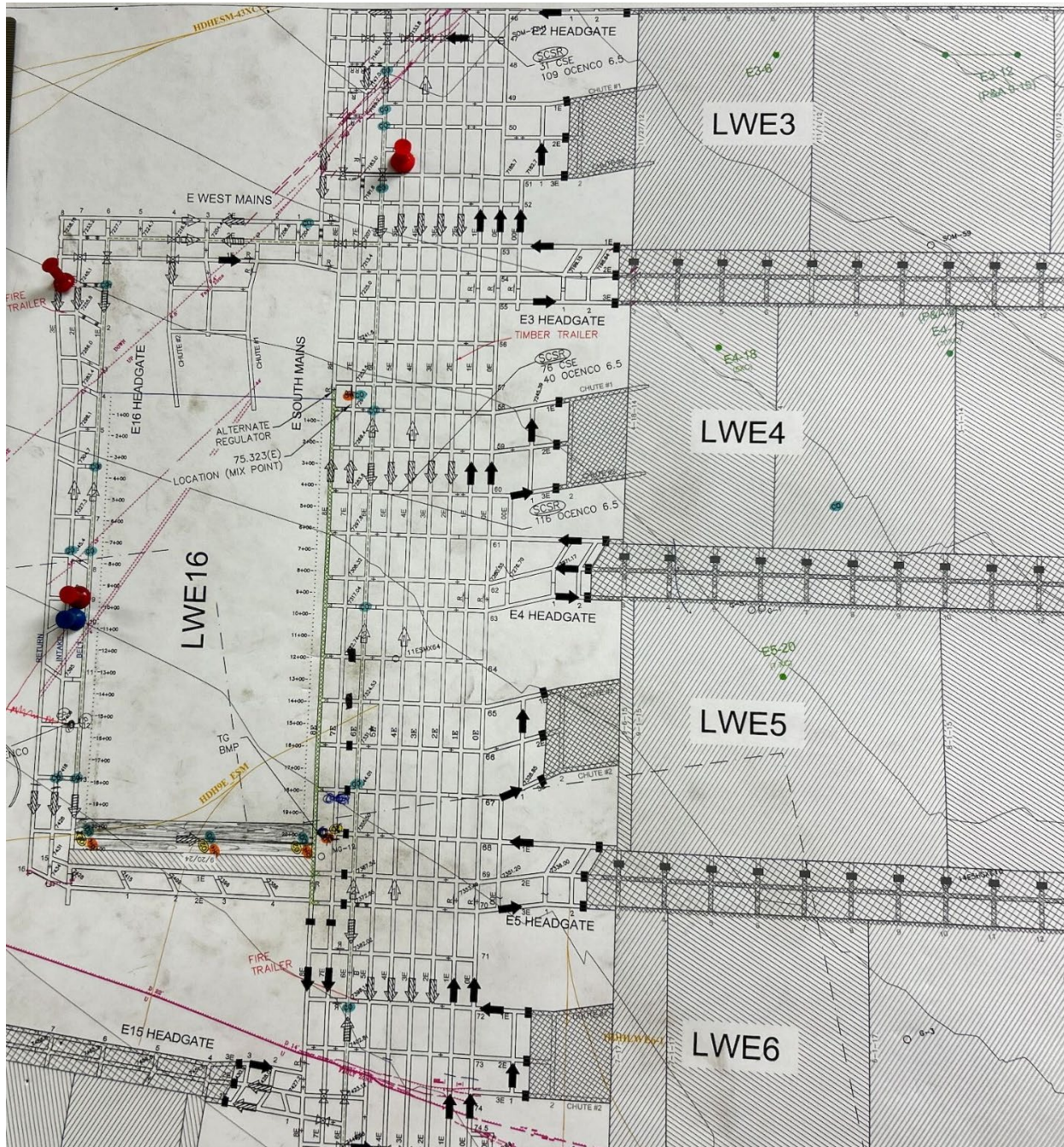
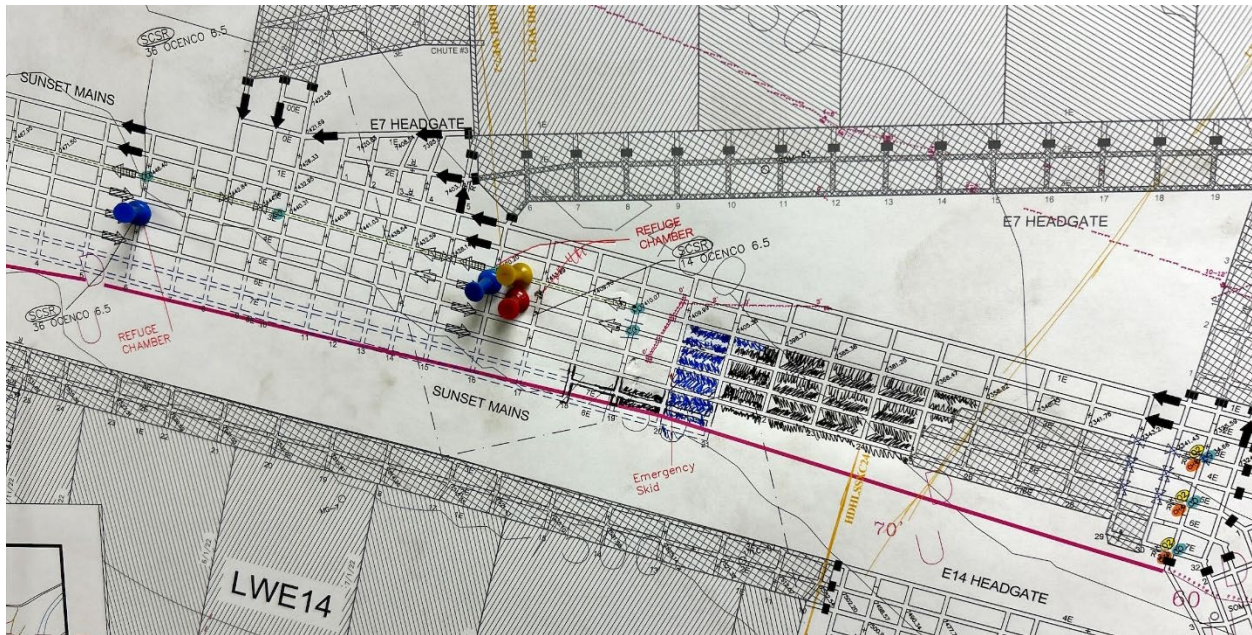
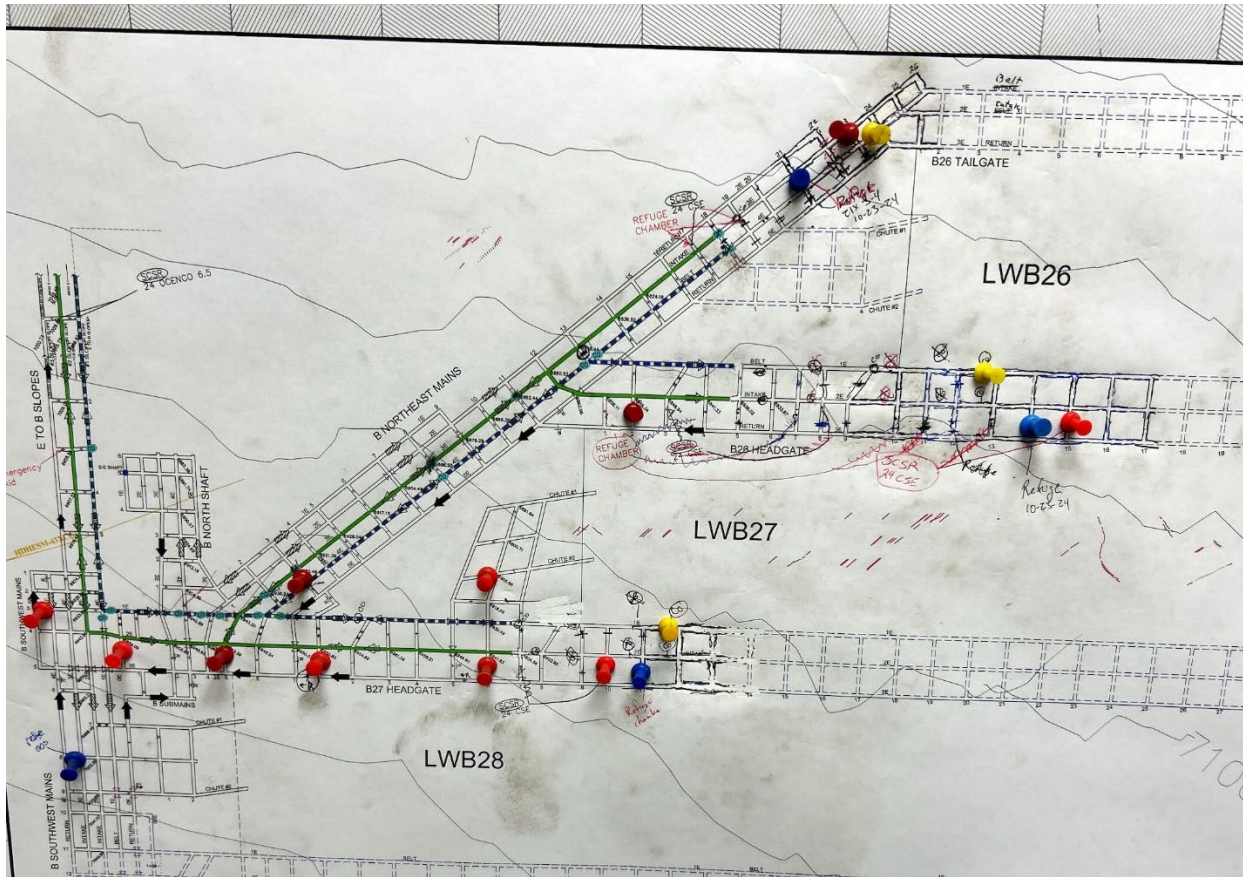
**PHOTOGRAPHS**

Figure 1: Mine Map showing longwall progress

Number of Partial Inspection this Fiscal Year: 3

Number of Complete Inspections this Fiscal Year: 1









*Figure 4: Top of Silo 2, sealed*

Number of Partial Inspection this Fiscal Year: 3

Number of Complete Inspections this Fiscal Year: 1





*Figure 5: Clean coal stockpile pad from top of silo*



*Figure 6: MB3 pond, cleaned, from top of silo*

Number of Partial Inspection this Fiscal Year: 3

Number of Complete Inspections this Fiscal Year: 1





*Figure 7: MB5E pond, cleaned, from top of silo*

Number of Partial Inspection this Fiscal Year: 3

Number of Complete Inspections this Fiscal Year: 1





*Figure 8: BCN booster pumphouse*

Number of Partial Inspection this Fiscal Year: 3

Number of Complete Inspections this Fiscal Year: 1





*Figure 9: RPEE surface*



*Figure 10: Highest area of RPEE*

Number of Partial Inspection this Fiscal Year: 3

Number of Complete Inspections this Fiscal Year: 1





*Figure 11: Topsoil stripped and large boulders excavated*



*Figure 12: Pond cleanings drying on northeast side of RPEE*

Number of Partial Inspection this Fiscal Year: 3

Number of Complete Inspections this Fiscal Year: 1





*Figure 13: Topsoil and straw wattles on RPEE outslope*



*Figure 14: Straw wattles need replacing*

Number of Partial Inspection this Fiscal Year: 3

Number of Complete Inspections this Fiscal Year: 1





*Figure 15: Outcrops to be reclaimed*



*Figure 16: RPE and RPE pond*

Number of Partial Inspection this Fiscal Year: 3

Number of Complete Inspections this Fiscal Year: 1