



Western Water & Land, Inc.

October 23, 2024

Ms. Amy Yeldell
Environmental Protection Specialist
Colorado Division of Reclamation, Mining and Safety
101 South 3rd, Suite 301
Grand Junction, CO 81501

RE: AMSO Permit P-2008-046 2023 Annual Report

Dear Ms. Yeldell:

Western Water & Land, Inc. (WWL), on behalf of American Shale Oil, LLC, has prepared the attached 2024 Annual Report for the RD&D Project Phase I, Permit P-2008-046. This submittal includes the report form, a reclamation map, and the required fee check.

AMSO ceased operations on April 1, 2016 and commenced with reclamation of the entire permitted area. Site wells were plugged and abandoned and surface facilities were demolished or salvaged and the site was regraded, seeded and fenced by November 23, 2016.

The total disturbed area of approximately 13.6 acres was under reclamation at the site on the anniversary date of October 18, 2022.. A formal request for release of the HB Pad and associated access road, an area of 1.41 acres, was submitted to DRMS on September 18, 2023 and DRMS granted release on October 18, 2023. The total remaining acreage under reclamation is 12.19 acres (see Figure 1).

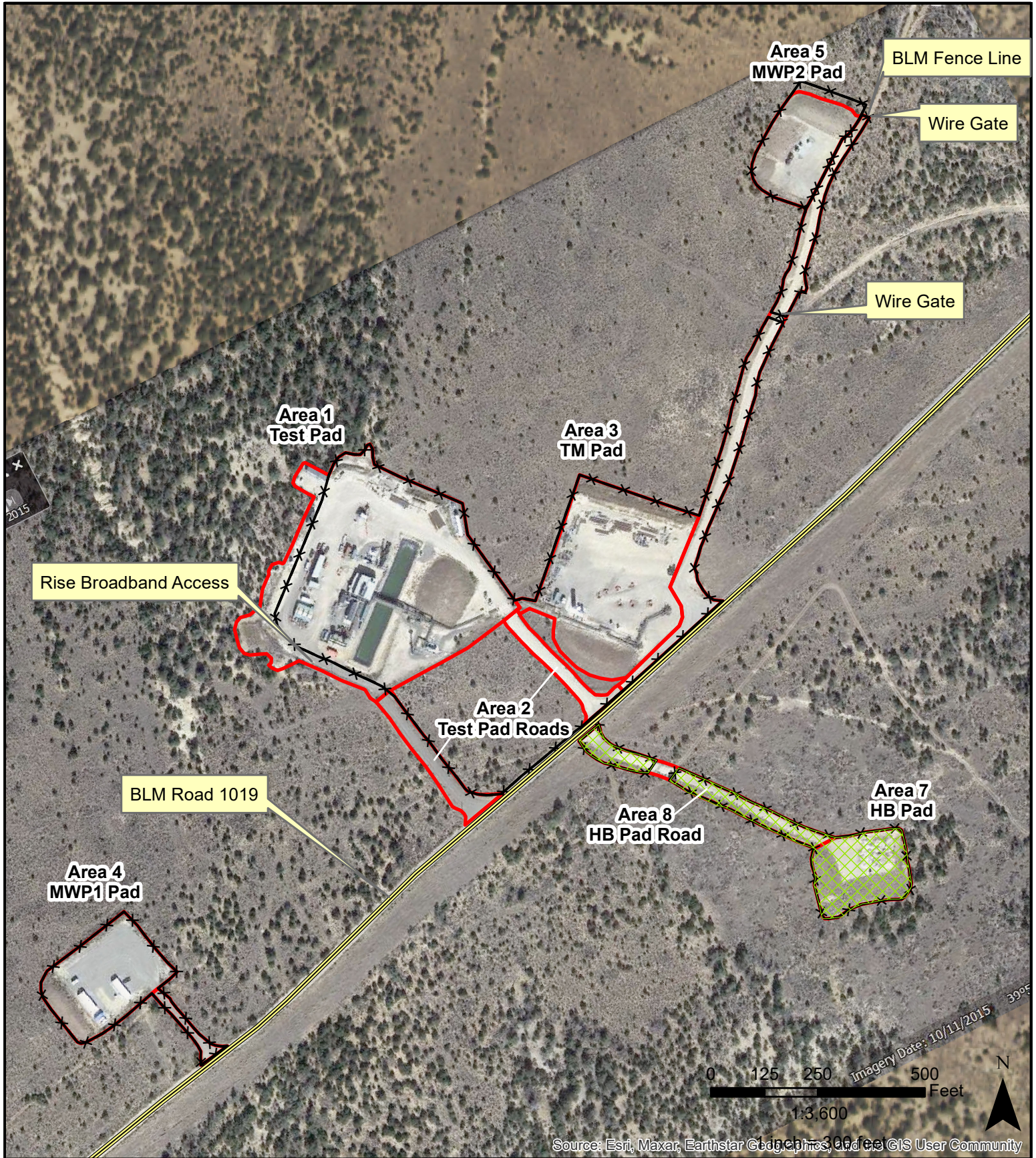
No DRMS site inspection was conducted in 2024. Weed treatment was conducted at the site. An inspection in Spring of 2025 is anticipated to assess weed conditions and the potential for further reclamation release.

WWL will continue to conduct reclamation inspections on a quarterly basis through 2024. A bond amount of \$46,789.00 remains in effect for the permit. If you require additional information, or would like to inspect the site, please contact me at (970) 242-0170.

Sincerely,

Bruce D. Smith
Principal Hydrogeologist
WESTERN WATER & LAND, INC.

cc: Avi Goldin, Genie Energy
Attachment



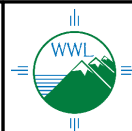
Legend

- Areas Under Reclamation
(Seeded 11/2016)
- Fencing
- DRMS Released Reclamation Area (2023)

Date: October 2024

Figure 1. AMSO Reclamation Map

American Shale Oil, LLC
Rio Blanco County, Colorado



Western Water & Land, Inc.
Applications in Earth Science