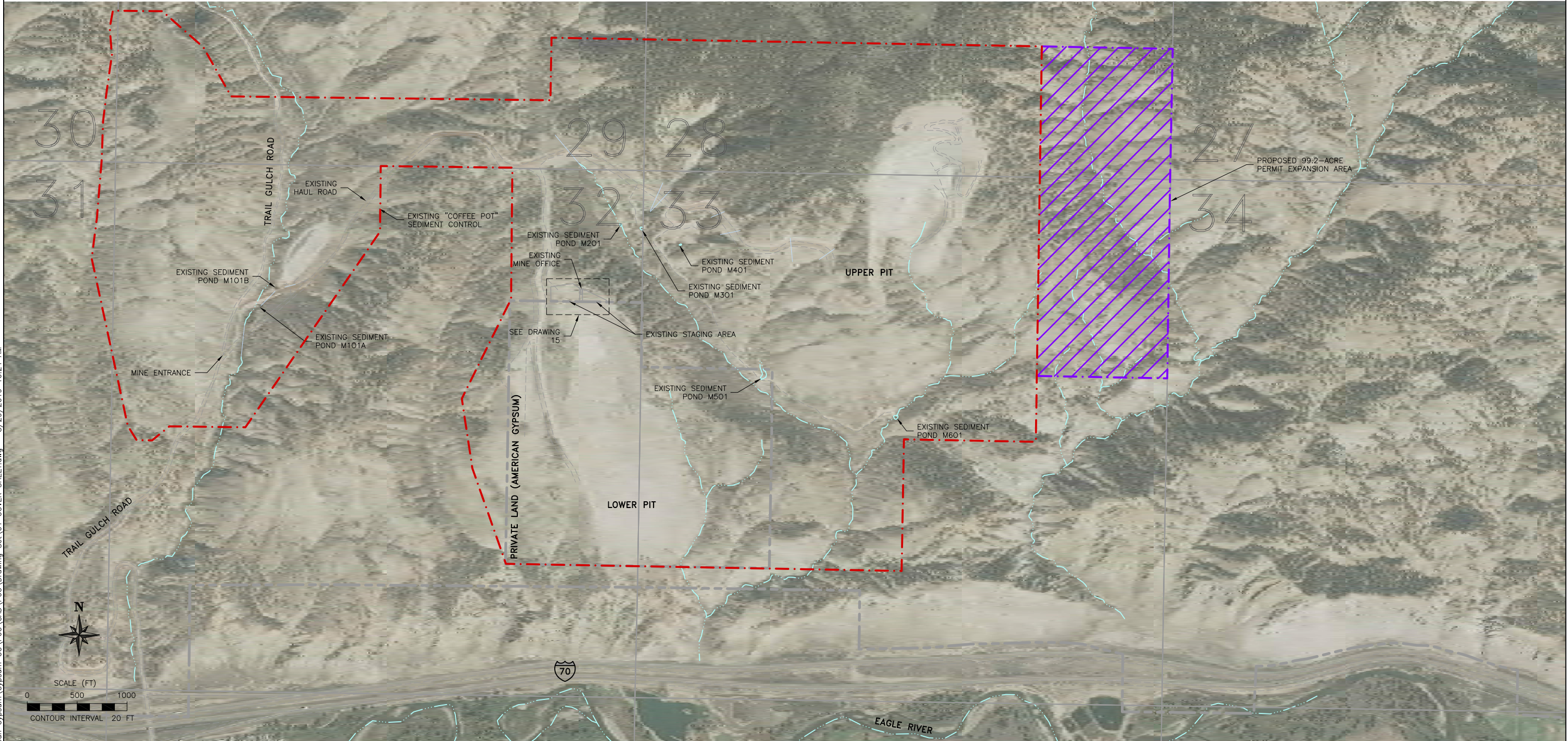


UPPER PIT AND EAST PIT

2019 PLAN OF OPERATIONS MODIFICATION

EAGLE-GYPSUM MINE



REFERENCE:
DATUM IS NAD 83 COLORADO CENTRAL STATE PLANE
TOPOGRAPHY IS FROM COMPASSDATA, 2015 AND 2016
SUPPLEMENTAL TOPOGRAPHY FROM GAMBA, 2018 AND GAMBA, 2019
ADDITIONAL INFORMATION FROM USDA NRCS, 2018
MICROSOFT BING AERIAL IMAGE 2018

ENGINEER'S SEAL

REVISIONS:				
REV	DESCRIPTION	BY	DATE	
0	ISSUED FOR PLAN OF OPERATIONS	AKB	02/2019	
1	ROAD SNAPSHOTS, MODIFIED 6900 ROAD	AKB	05/2019	
2	DISTURBANCE AREAS, BUILDING AREAS	AKB	09/2019	

DESIGNED BY:	AKB
DRAWN BY:	TCH
CHECKED BY:	AKB
APPROVED BY:	PEK

PREPARED FOR:



PREPARED BY:

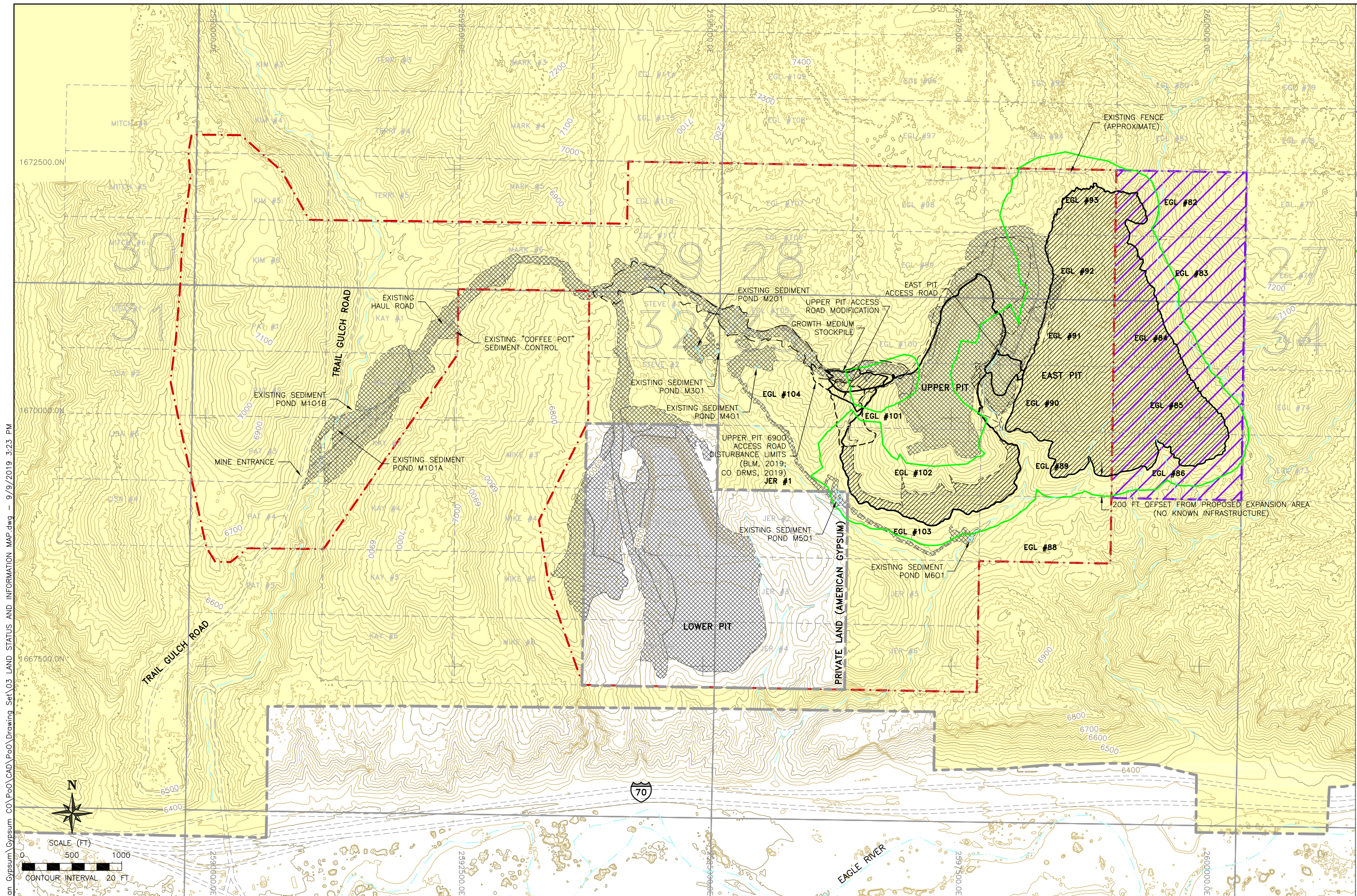


TITLE:

COVER SHEET



PROJECT:	PROJECT #:	DRAWING #:
PLAN OF OPERATIONS	375	01
LOCATION:	DATE:	SHEET:
GYPSUM, COLORADO	SEPTEMBER 2019	01 OF 16



- LEGEND:**
- 7000 EXISTING CONTOURS
 - 7000 PROPOSED CONTOURS
 - EXISTING ROADS
 - EXISTING FENCE (APPROXIMATE)
 - EXISTING SEDIMENT POND
 - EXISTING DRAINAGE
 - EXISTING CULVERT
 - APPROVED 830.2-ACRE PERMIT AREA
 - PROPOSED 99.2-ACRE PERMIT EXPANSION AREA
 - PERMITTED DISTURBANCE AREA (BLM, 2002; CO DRMS, 2001)
 - EXISTING HAUL ROAD DISTURBANCE AREA (CO DRMS, 2003)
 - PERMITTED DISTURBANCE AREA (BLM, 2019; CO DRMS, 2019)
 - PROPOSED ACTIVITIES WITHIN PERMITTED DISTURBANCE
 - PROPOSED ACTIVITIES - NEW DISTURBANCE
 - ACTUAL DISTURBANCE
 - 200-FT OFFSET FROM PROPOSED EXPANSION AREA
 - CLAIM BOUNDARY
 - EGL #25 CLAIM NAMES
 - 28 SECTIONS (TOWNSHIP 4S RANGE 85W)
 - PRIVATE LAND
 - BLM LAND

REFERENCE:
DATUM IS NAD 83 COLORADO CENTRAL STATE PLANE
TOPOGRAPHY IS FROM COMPASSDATA, 2015 AND 2016
SUPPLEMENTAL TOPOGRAPHY FROM GAMBA, 2018 AND GAMBA, 2019
ADDITIONAL INFORMATION FROM USDA NRCS, 2018

ENGINEER'S SEAL

REVISIONS:				
REV	DESCRIPTION	BY	DATE	
0	ISSUED FOR PLAN OF OPERATIONS	AKB	02/2019	
1	ROAD SNAPSHOTS, MODIFIED 6900 ROAD	AKB	05/2019	
2	DISTURBANCE AREAS, BUILDING AREAS	AKB	09/2019	

DESIGNED BY:	AKB
DRAWN BY:	TCH
CHECKED BY:	AKB
APPROVED BY:	PEK

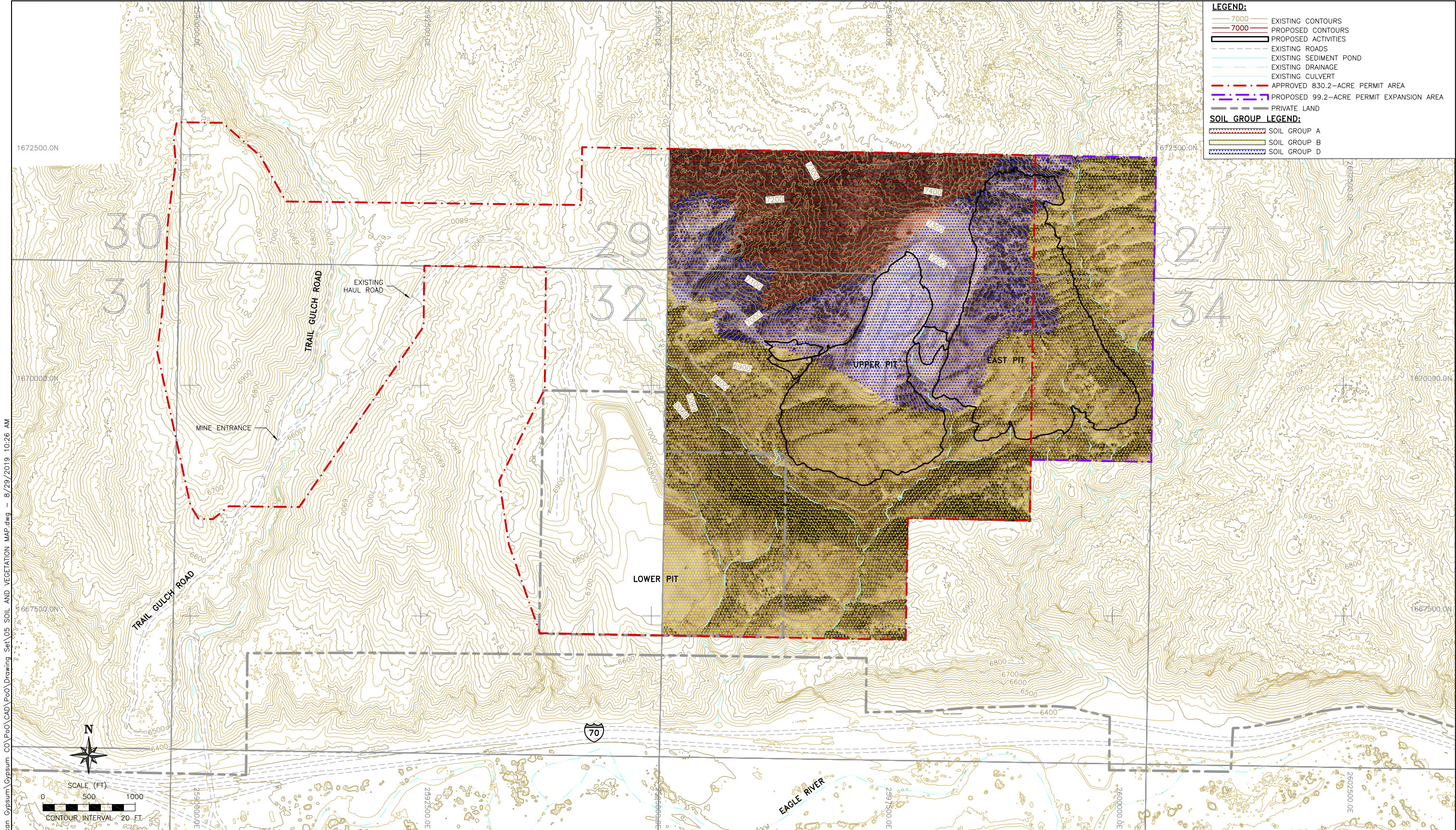
PREPARED FOR:



PREPARED BY:



TITLE:			
LAND STATUS AND INFORMATION MAP			
PROJECT:	PROJECT #:	DRAWING #:	03
PLAN OF OPERATIONS	375		
LOCATION:	DATE:	SHEET:	
GYPSUM, COLORADO	SEPTEMBER 2019	03 OF 16	



REFERENCE:
DATUM IS NAD 83 COLORADO CENTRAL STATE PLANE
TOPOGRAPHY IS FROM COMPASSDATA, 2015 AND 2016
SUPPLEMENTAL TOPOGRAPHY FROM GAMBA, 2018 AND GAMBA, 2019
ADDITIONAL INFORMATION FROM USDA NRCS, 2018

ENGINEER'S SEAL

REVISIONS:				
REV	DESCRIPTION	BY	DATE	
0	ISSUED FOR PLAN OF OPERATIONS	AKB	02/2019	
1	ROAD SNAPSHOTS, MODIFIED 6900 ROAD	AKB	05/2019	
2	DISTURBANCE AREAS, BUILDING AREAS	AKB	09/2019	

DESIGNED BY:	AKB
DRAWN BY:	TCH
CHECKED BY:	AKB
APPROVED BY:	PEK

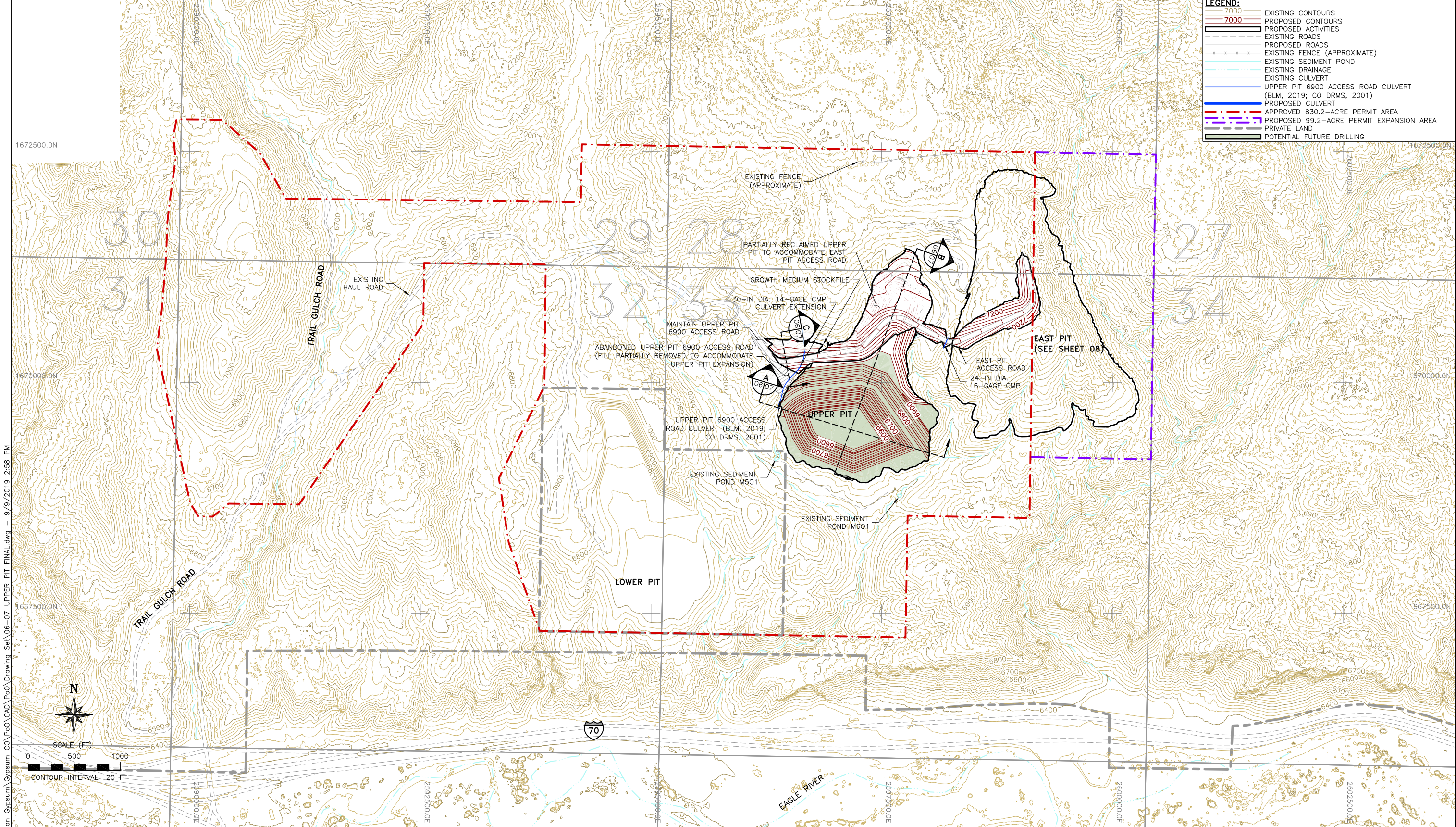
PREPARED FOR:



PREPARED BY:



TITLE: SOILS AND VEGETATION MAP			 REVISION
PROJECT: PLAN OF OPERATIONS	PROJECT #: 375	DRAWING #: 05	
LOCATION: GYPSUM, COLORADO	DATE: SEPTEMBER 2019	SHEET: 05 OF 16	



REFERENCE:
DATUM IS NAD 83 COLORADO CENTRAL STATE PLANE
TOPOGRAPHY IS FROM COMPASSDATA, 2015 AND 2016
SUPPLEMENTAL TOPOGRAPHY FROM GAMBA, 2018 AND GAMBA, 2019
ADDITIONAL INFORMATION FROM USDA NRCS, 2018

ENGINEER'S SEAL

REVISIONS:				
REV	DESCRIPTION	BY	DATE	
0	ISSUED FOR PLAN OF OPERATIONS	AKB	02/2019	
1	ROAD SNAPSHOTS, MODIFIED 6900 ROAD	AKB	05/2019	
2	DISTURBANCE AREAS, BUILDING AREAS	AKB	09/2019	

DESIGNED BY:	AKB
DRAWN BY:	TCH
CHECKED BY:	AKB
APPROVED BY:	PEK

PREPARED FOR:



PREPARED BY:

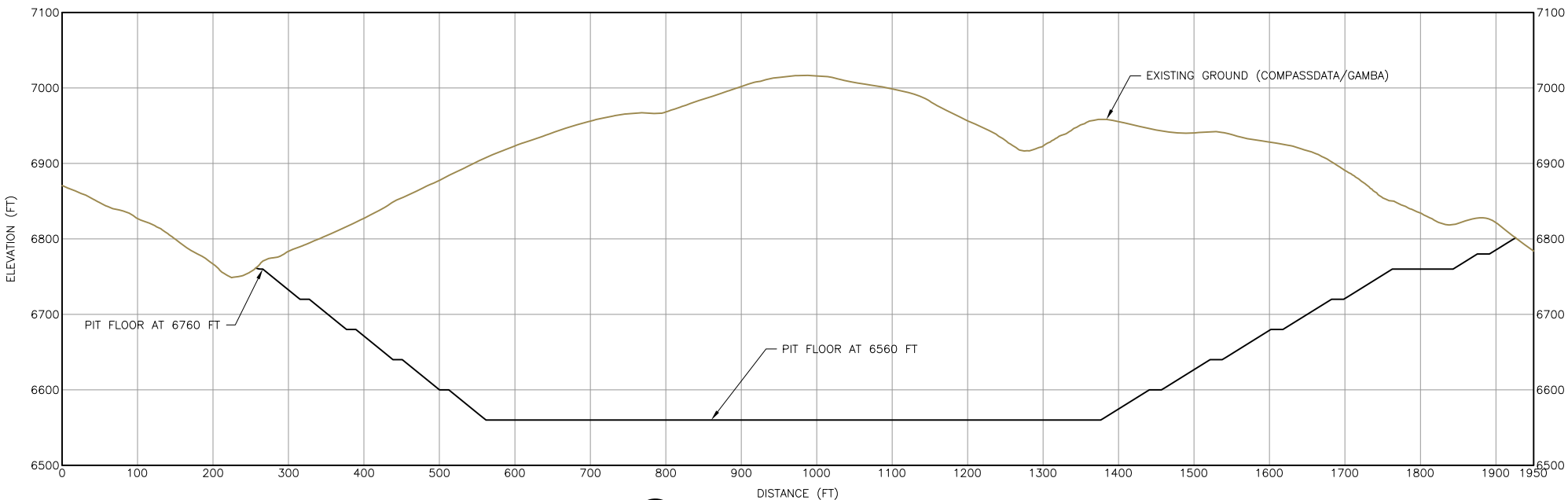


TITLE:
PROPOSED UPPER PIT EXPANSION MAP

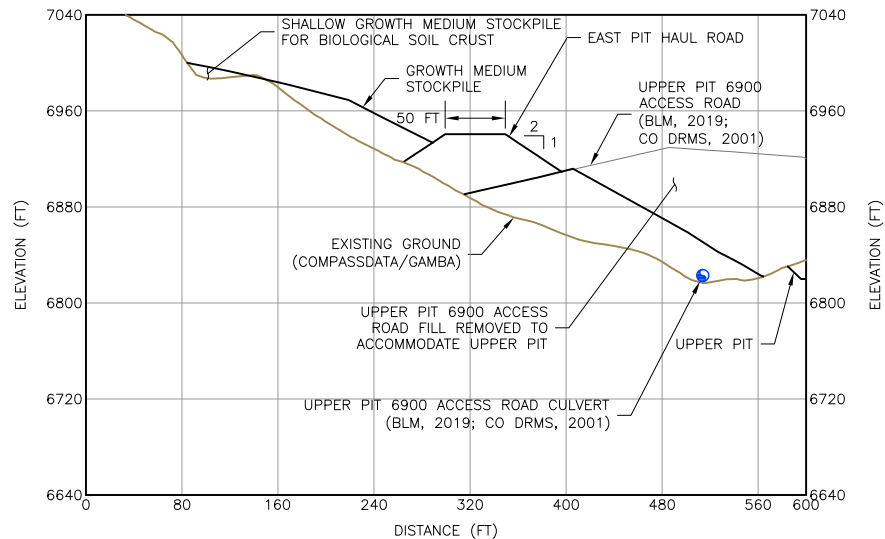


PROJECT: PLAN OF OPERATIONS	PROJECT #: 375	DRAWING #: 06
LOCATION: GYPSUM, COLORADO	DATE: SEPTEMBER 2019	SHEET: 06 OF 16

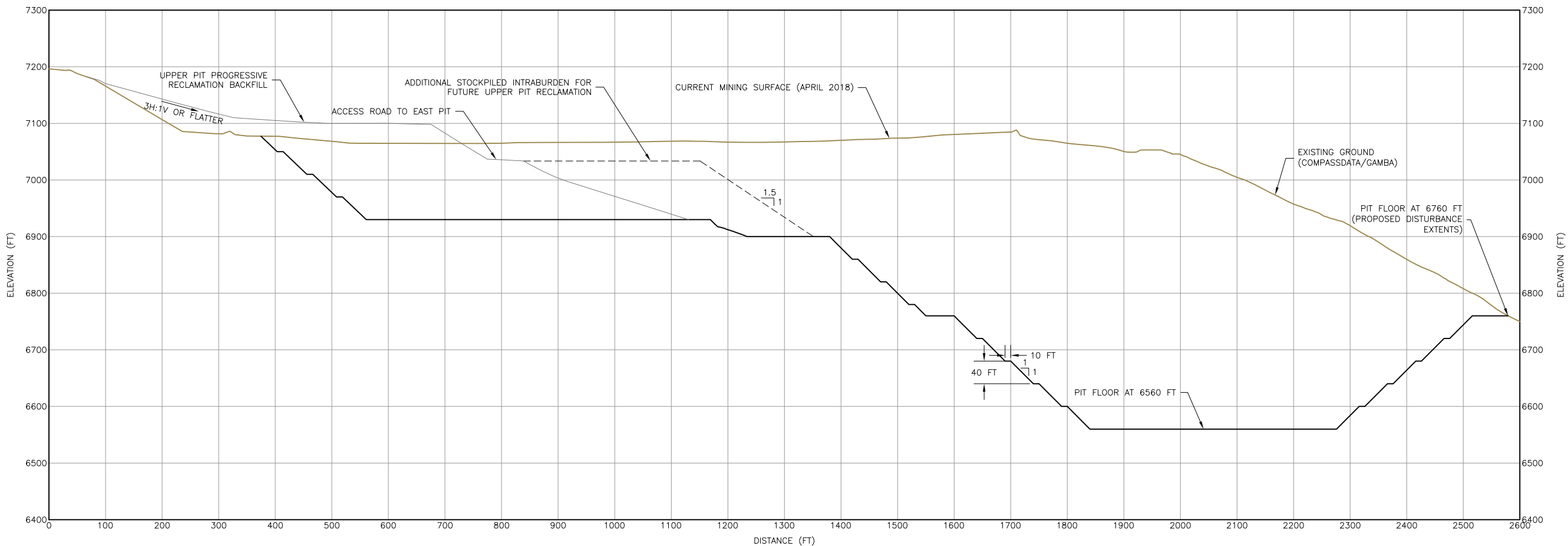
Adrien Butler - Z:\American Gypsum\Gypsum CO\PoO\CAD\Drawing Set\06-07 UPPER PIT FINAL.dwg - 9/9/2019 3:24 PM



A UPPER PIT TRANSVERSE SECTION
06/07
SCALE AS SHOWN



C UPPER PIT ACCESS ROAD AND GROWTH MEDIUM STOCKPILE TYPICAL SECTION
06/07
SCALE AS SHOWN



B UPPER PIT LONGITUDINAL SECTION
06/07
SCALE AS SHOWN

REFERENCE:
DATUM IS NAD 83 COLORADO CENTRAL STATE PLANE
TOPOGRAPHY IS FROM COMPASSDATA, 2015 AND 2016
SUPPLEMENTAL TOPOGRAPHY FROM GAMBA, 2018 AND GAMBA, 2019
ADDITIONAL INFORMATION FROM USDA NRCS, 2018

ENGINEER'S SEAL

REVISIONS:				
REV	DESCRIPTION	BY	DATE	
0	ISSUED FOR PLAN OF OPERATIONS	AKB	02/2019	
1	ROAD SNAPSHOTS, MODIFIED 6900 ROAD	AKB	05/2019	
2	DISTURBANCE AREAS, BUILDING AREAS	AKB	09/2019	

DESIGNED BY:	AKB
DRAWN BY:	TCH
CHECKED BY:	AKB
APPROVED BY:	PEK

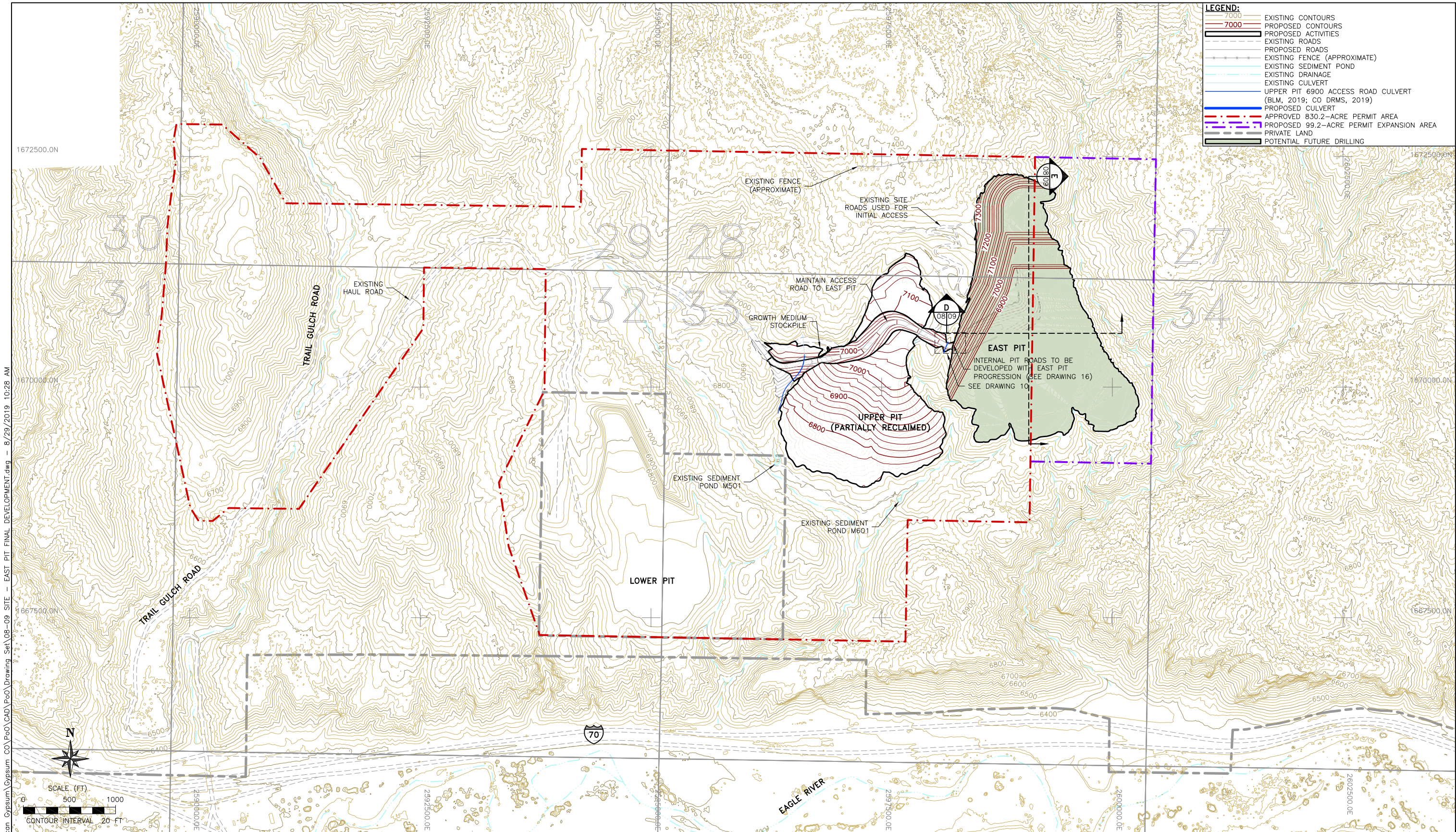
PREPARED FOR:



PREPARED BY:



TITLE: PROPOSED UPPER PIT EXPANSION CROSS-SECTIONS			<div>2</div> REVISION
PROJECT: PLAN OF OPERATIONS	PROJECT #: 375	DRAWING #: 07	
LOCATION: GYPSUM, COLORADO	DATE: SEPTEMBER 2019	SHEET: 07 OF 16	



REFERENCE:
DATUM IS NAD 83 COLORADO CENTRAL STATE PLANE
TOPOGRAPHY IS FROM COMPASSDATA, 2015 AND 2016
SUPPLEMENTAL TOPOGRAPHY FROM GAMBA, 2018 AND GAMBA, 2019
ADDITIONAL INFORMATION FROM USDA NRCS, 2018

ENGINEER'S SEAL

REVISIONS:				
REV	DESCRIPTION	BY	DATE	
0	ISSUED FOR PLAN OF OPERATIONS	AKB	02/2019	
1	ROAD SNAPSHOTS, MODIFIED 6900 ROAD	AKB	05/2019	
2	DISTURBANCE AREAS, BUILDING AREAS	AKB	09/2019	

DESIGNED BY:	AKB
DRAWN BY:	TCH
CHECKED BY:	AKB
APPROVED BY:	PEK

PREPARED FOR:

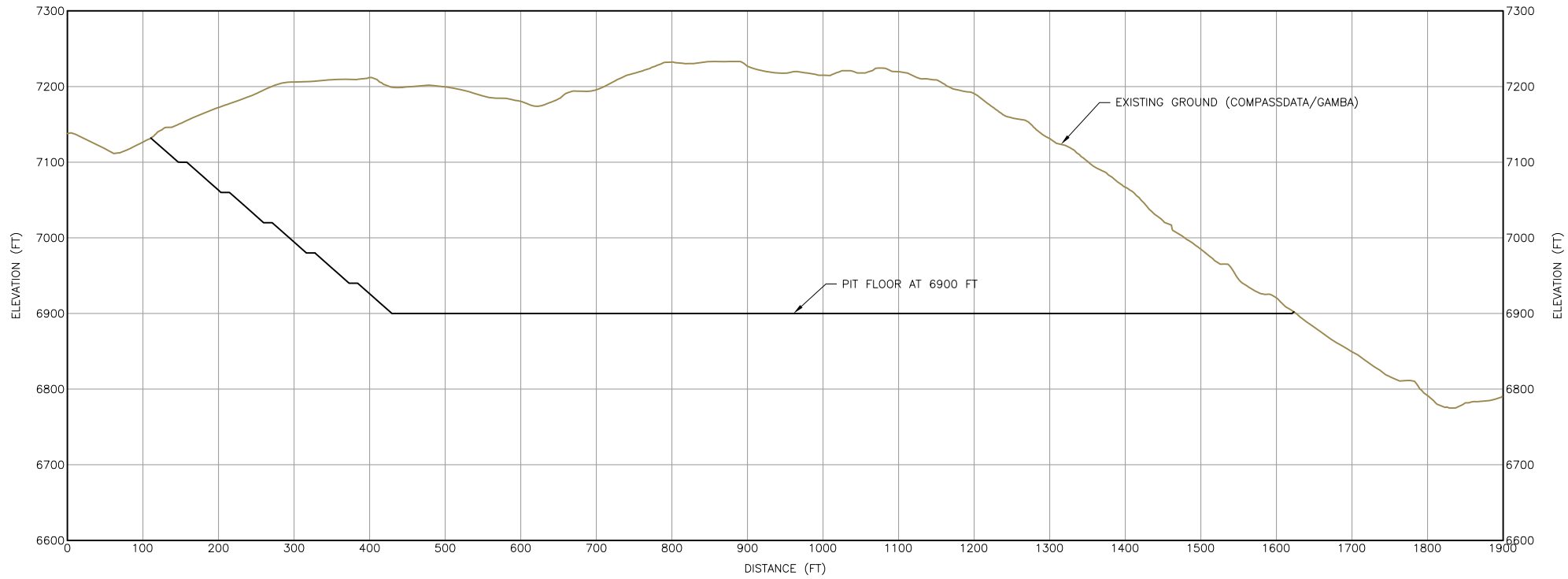


PREPARED BY:

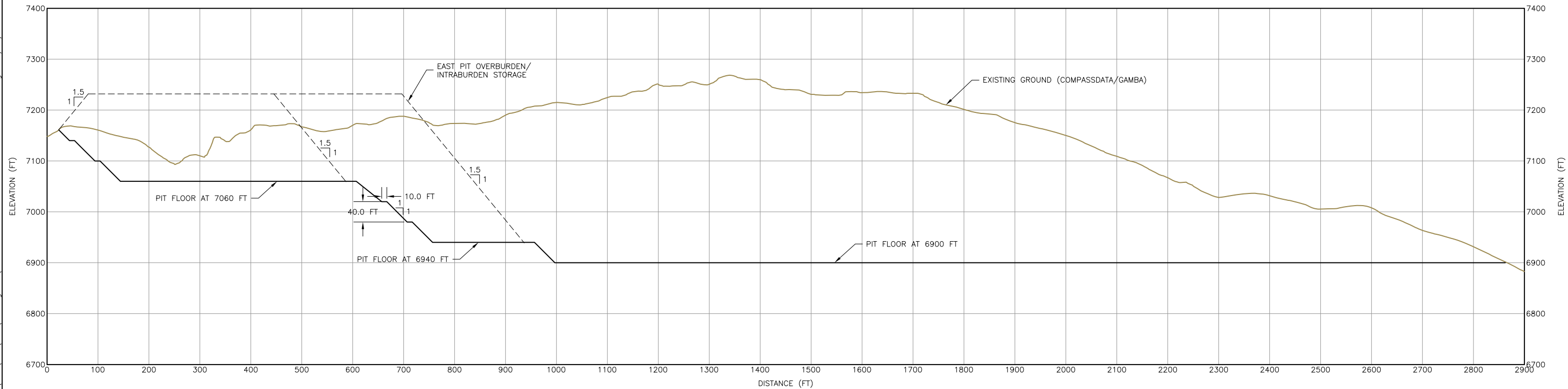


TITLE:			<div><div>2</div><div>REVISION</div></div>
PROPOSED EAST PIT MAP			
PROJECT: PLAN OF OPERATIONS	PROJECT #: 375	DRAWING #: 08	
LOCATION: GYPSUM, COLORADO	DATE: SEPTEMBER 2019	SHEET: 08 OF 16	

Z:\American Gypsum\Gypsum CO\PoD\CAD\Drawing Set\08-09 SITE - EAST PIT FINAL DEVELOPMENT.dwg - 8/29/2019 10:28 AM



D EAST PIT TYPICAL TRANSVERSE SECTION
SCALE AS SHOWN



E EAST PIT TYPICAL LONGITUDINAL SECTION
SCALE AS SHOWN

REFERENCE:
DATUM IS NAD 83 COLORADO CENTRAL STATE PLANE
TOPOGRAPHY IS FROM COMPASSDATA, 2015 AND 2016
SUPPLEMENTAL TOPOGRAPHY FROM GAMBA, 2018 AND GAMBA, 2019
ADDITIONAL INFORMATION FROM USDA NRCS, 2018

ENGINEER'S SEAL

REVISIONS:			
REV	DESCRIPTION	BY	DATE
0	ISSUED FOR PLAN OF OPERATIONS	AKB	02/2019
1	ROAD SNAPSHOTS, MODIFIED 6900 ROAD	AKB	05/2019
2	DISTURBANCE AREAS, BUILDING AREAS	AKB	09/2019

DESIGNED BY:	AKB
DRAWN BY:	TCH
CHECKED BY:	AKB
APPROVED BY:	PEK

PREPARED FOR:

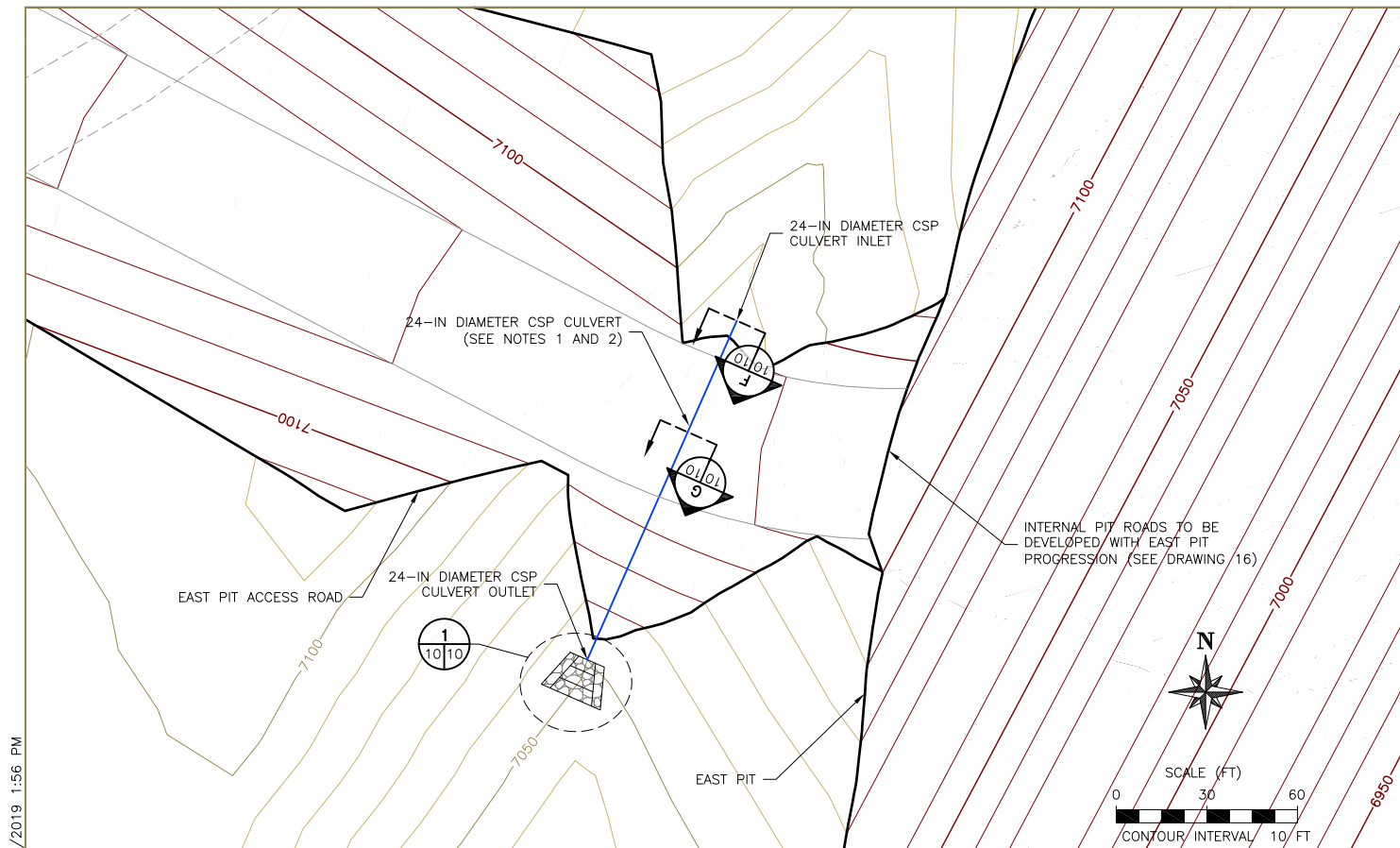


PREPARED BY:



TITLE: <div>PROPOSED EAST PIT CROSS-SECTIONS</div>			<div><div>2</div><div>REVISION</div></div>
PROJECT: PLAN OF OPERATIONS	PROJECT #: 375	DRAWING #: 09	
LOCATION: GYPSUM, COLORADO	DATE: SEPTEMBER 2019	SHEET: 09 OF 16	

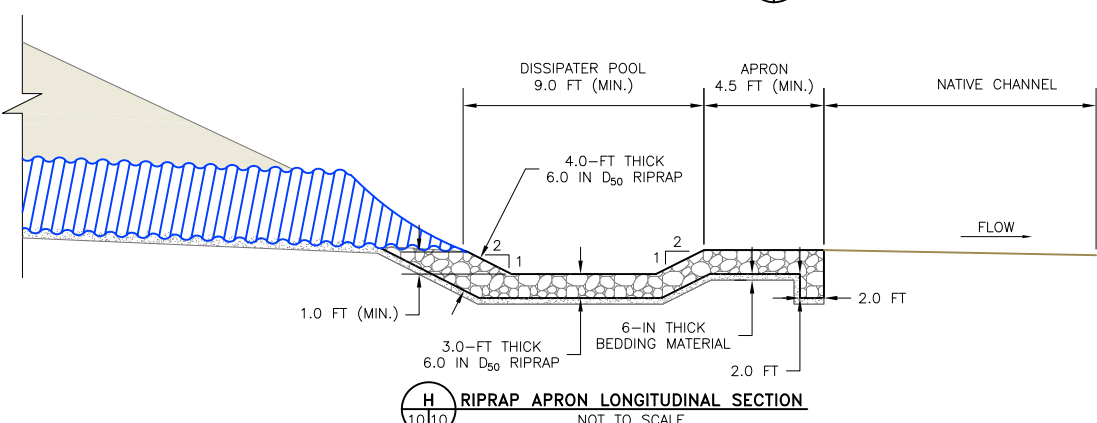
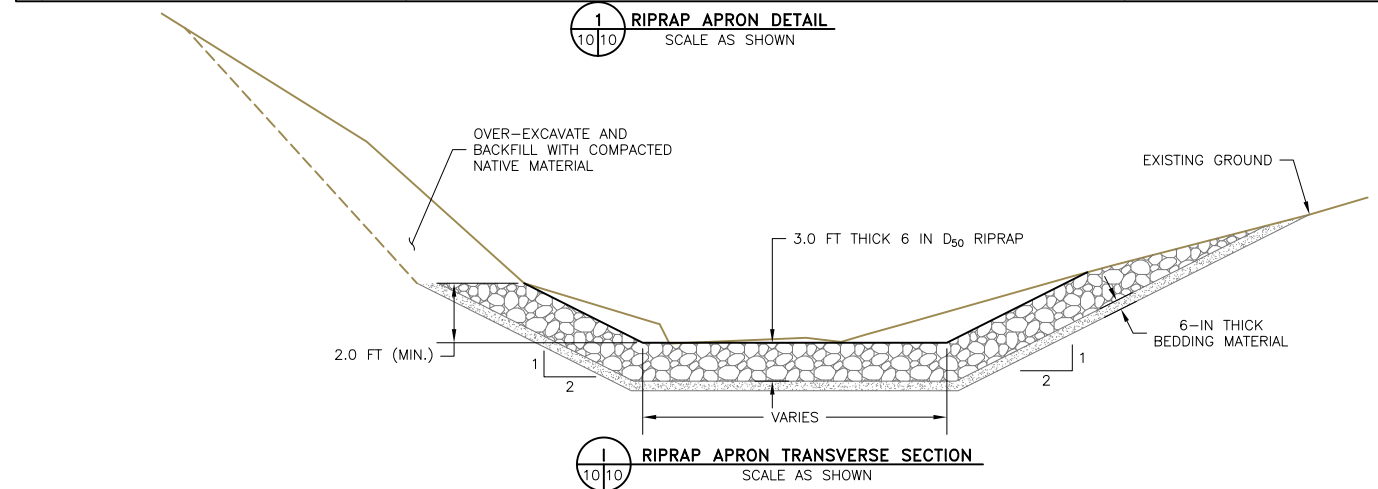
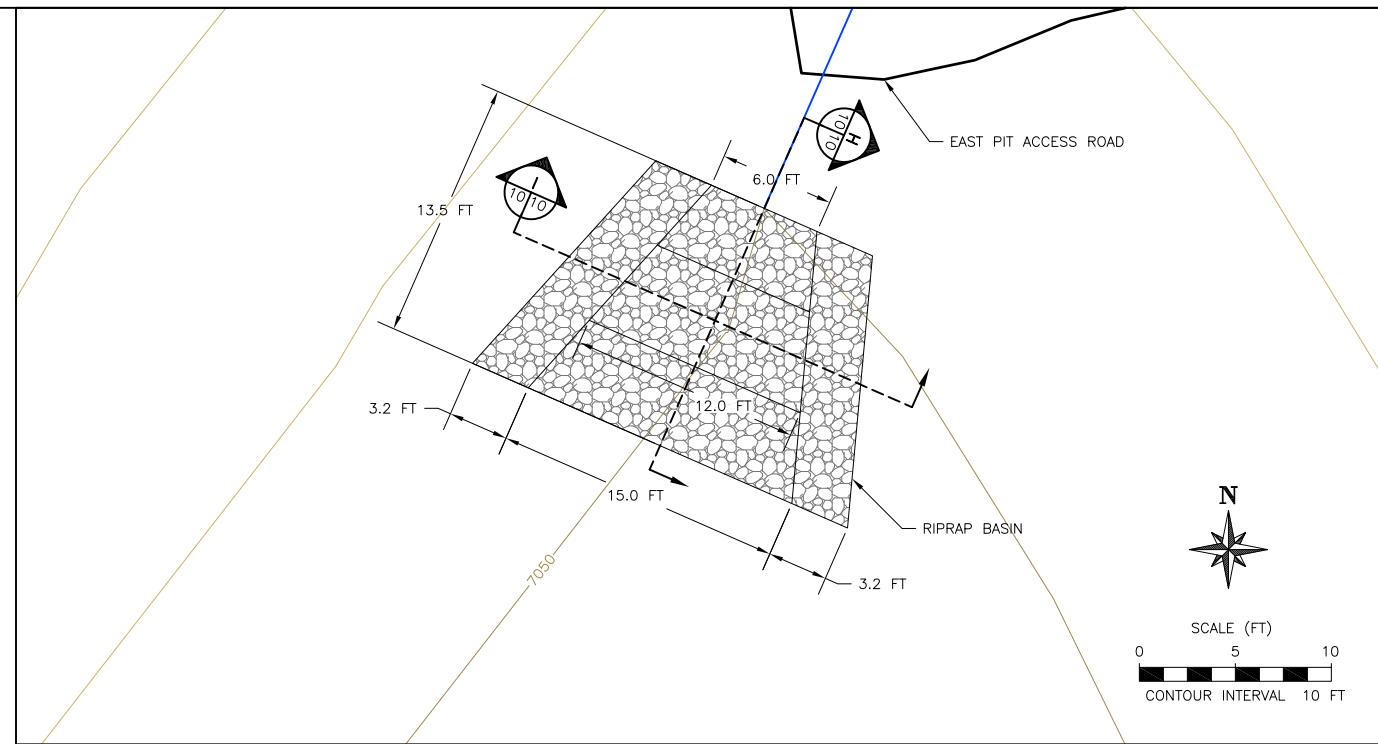
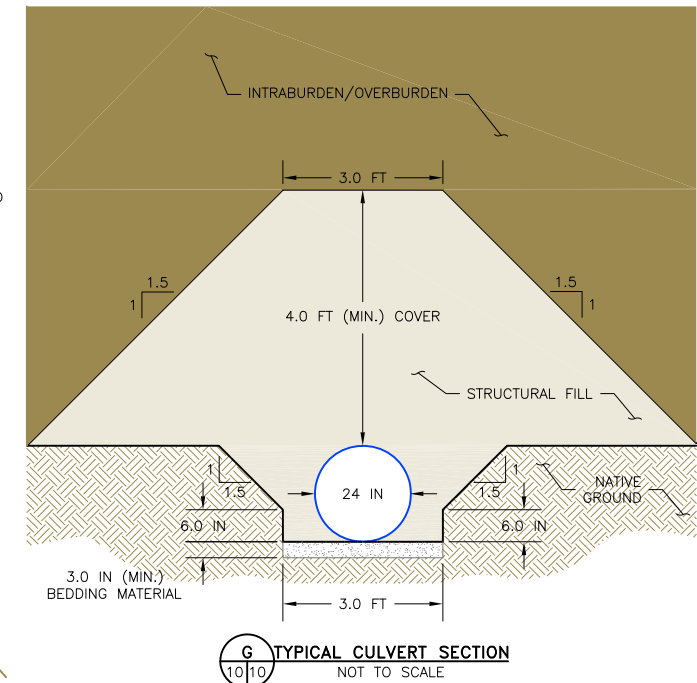
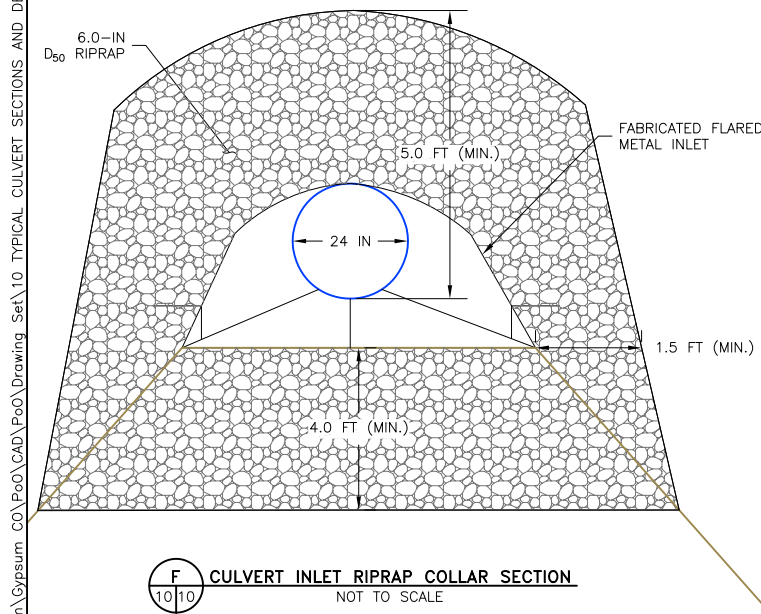
Adrien Butler - Z:\American Gypsum\Gypsum CO\PoD\CAD\Drawing Set\10 TYPICAL CULVERT SECTIONS AND DETAILS.dwg - 5/17/2019 1:56 PM



NOTES:

PROPOSED EAST PIT ACCESS ROAD CULVERT

1. CULVERT AT EAST PIT ACCESS ROAD TO BE BURIED, 24-IN DIAMETER, 16-GAGE POLYMER-COATED CSP. CULVERT EXTENSION AT UPPER PIT ACCESS ROAD TO BE BURIED, 30-IN DIAMETER, 14-GAGE POLYMER-COATED CSP.
2. CULVERT ALIGNMENT TO BE MODIFIED DURING CONSTRUCTION TO FIT LOW POINT IN DRAINAGE AND MINIMIZE CUT/FILL, WHILE MAINTAINING 19.0% GRADE. IF NEEDED, USE CONNECTION GASKETS TO ACHIEVE HORIZONTAL BEND.
3. TYPICAL DETAILS PERTAIN TO 30-IN AND 24-IN CULVERTS.



REFERENCE:

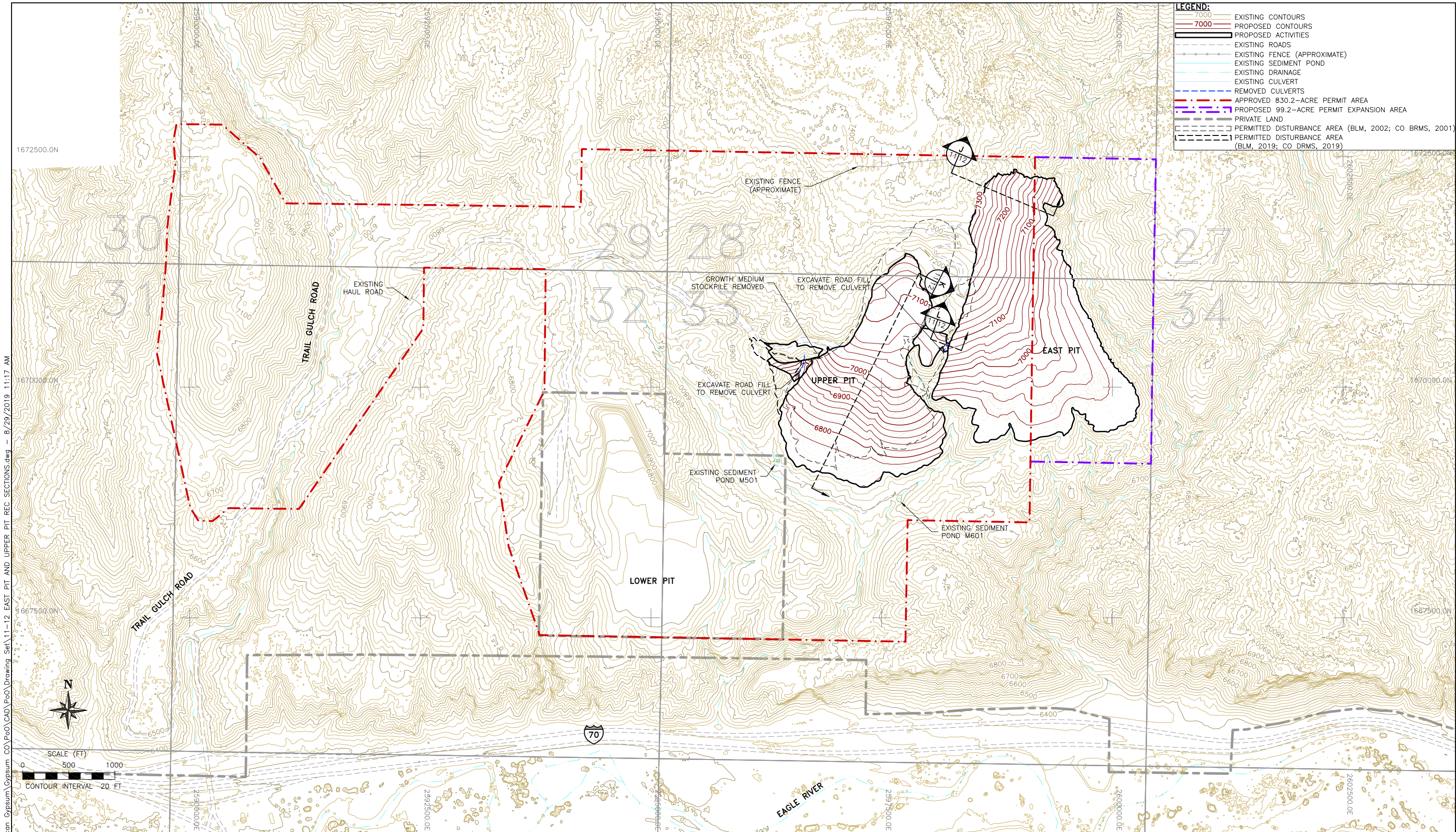
DATUM IS NAD 83 COLORADO CENTRAL STATE PLANE

TOPOGRAPHY IS FROM COMPASSDATA, 2015 AND 2016

SUPPLEMENTAL TOPOGRAPHY FROM GAMBA, 2018 AND GAMBA, 2019

ADDITIONAL INFORMATION FROM USDA NRCS, 2018

</



REFERENCE:
DATUM IS NAD 83 COLORADO CENTRAL STATE PLANE
TOPOGRAPHY IS FROM COMPASSDATA, 2015 AND 2016
SUPPLEMENTAL TOPOGRAPHY FROM GAMBA, 2018 AND GAMBA, 2019
ADDITIONAL INFORMATION FROM USDA NRCS, 2018

ENGINEER'S SEAL

REVISIONS:				
REV	DESCRIPTION	BY	DATE	
0	ISSUED FOR PLAN OF OPERATIONS	AKB	02/2019	
1	ROAD SNAPSHOTS, MODIFIED 6900 ROAD	AKB	05/2019	
2	DISTURBANCE AREAS, BUILDING AREAS	AKB	09/2019	

DESIGNED BY:	AKB
DRAWN BY:	TCH
CHECKED BY:	AKB
APPROVED BY:	PEK

PREPARED FOR:

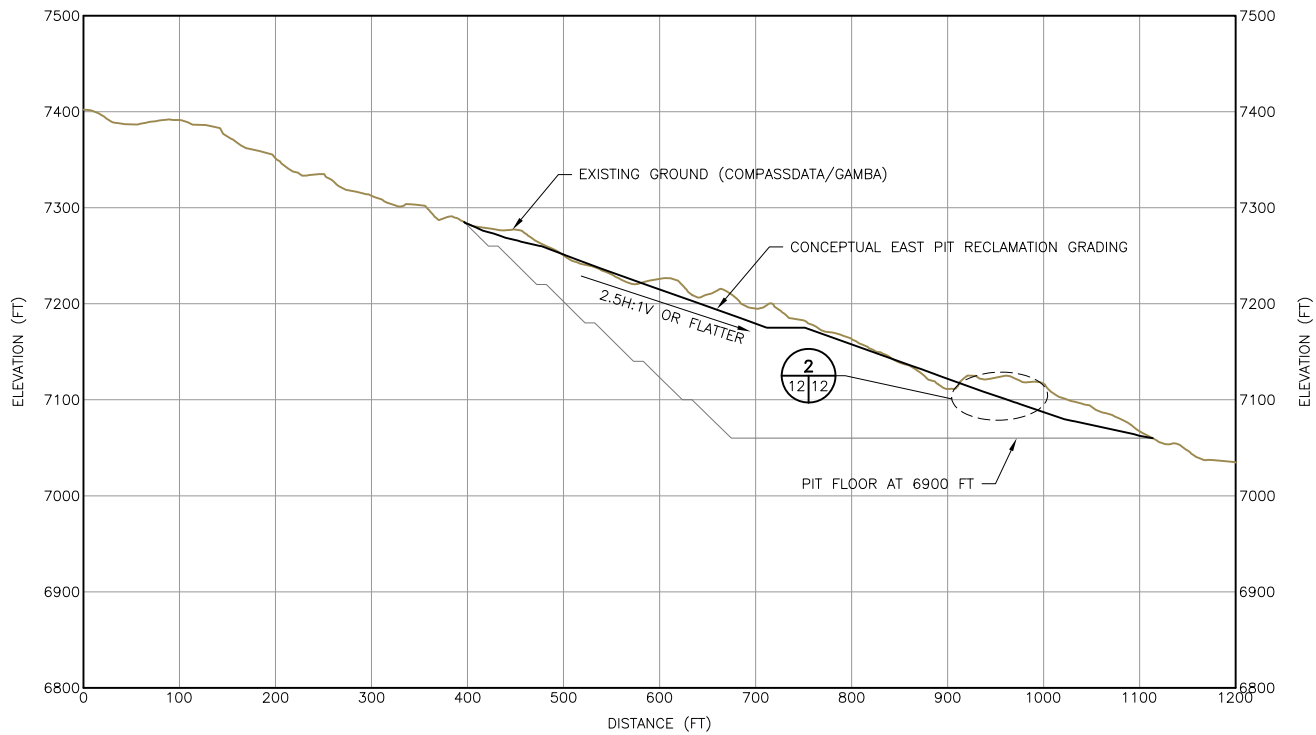


PREPARED BY:

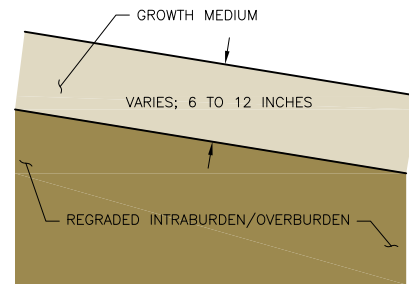


TITLE: PROPOSED DISTURBANCE RECLAMATION GRADING MAP			 REVISION
PROJECT: PLAN OF OPERATIONS	PROJECT #: 375	DRAWING #: 11	
LOCATION: GYPSUM, COLORADO	DATE: SEPTEMBER 2019	SHEET: 11 OF 16	

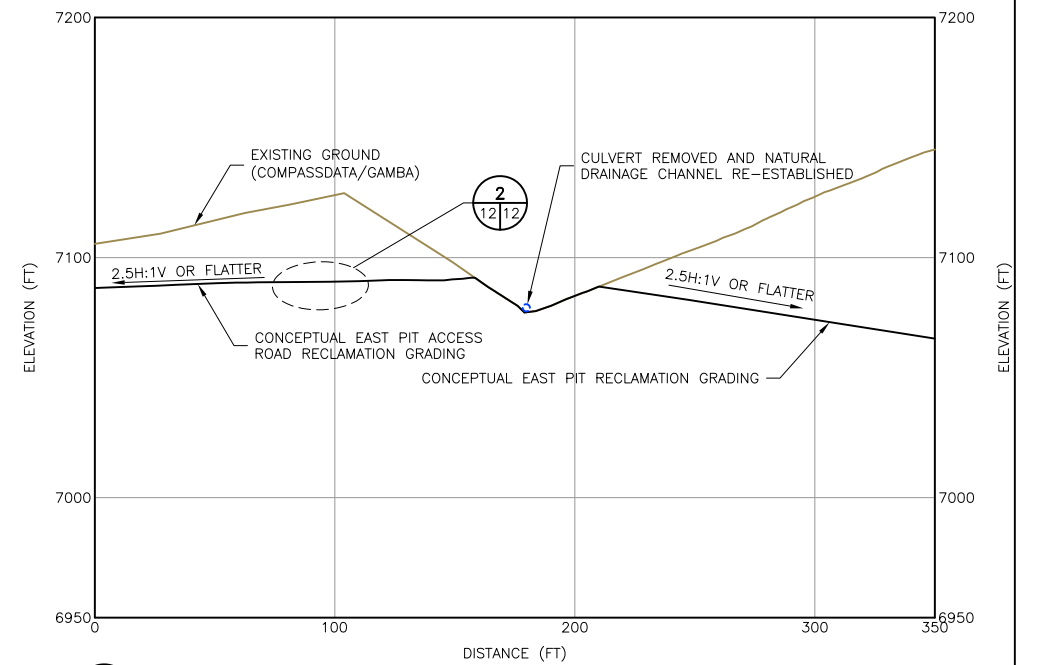
Z:\American Gypsum\Gypsum CO\PoO\CAD\Drawing Set\11-12 EAST PIT AND UPPER PIT REC SECTIONS.dwg - 8/29/2019 11:17 AM



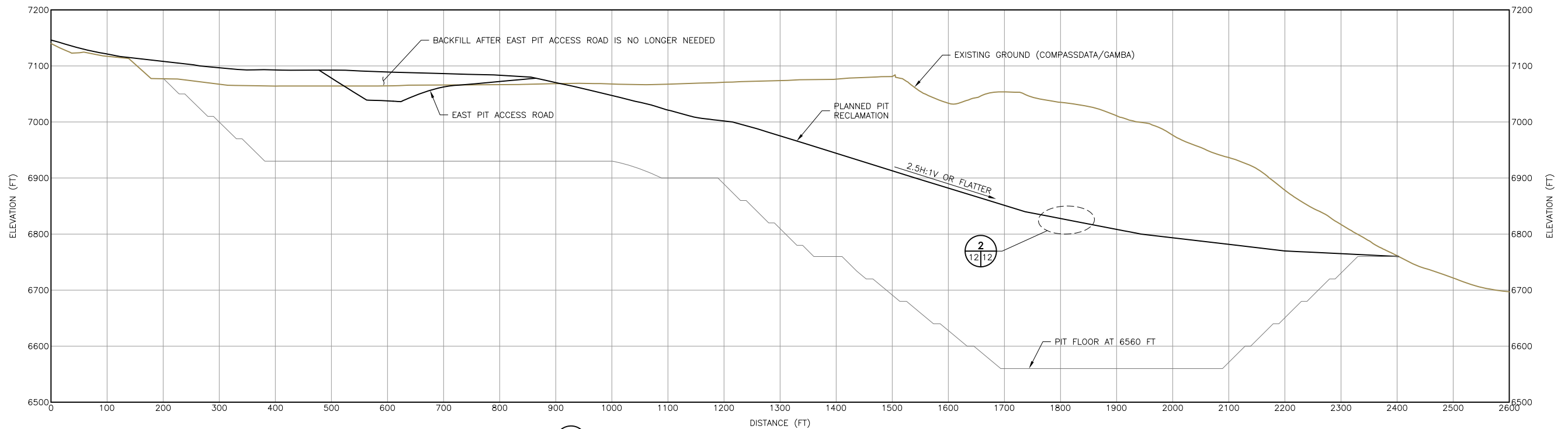
J
11/12
PROPOSED EAST PIT RECLAMATION GRADING TYPICAL CROSS-SECTION
SCALE AS SHOWN



2
12/12
PROPOSED GROWTH MEDIUM DETAIL
NOT TO SCALE



L
11/12
PROPOSED EAST PIT ACCESS ROAD RECLAMATION GRADING TYPICAL CROSS SECTION
SCALE AS SHOWN



K
11/12
PROPOSED UPPER PIT RECLAMATION GRADING TYPICAL CROSS-SECTION
SCALE AS SHOWN

REFERENCE:	
DATUM IS NAD 83 COLORADO CENTRAL STATE PLANE	
TOPOGRAPHY IS FROM COMPASSDATA, 2015 AND 2016	
SUPPLEMENTAL TOPOGRAPHY FROM GAMBA, 2018 AND GAMBA, 2019	
ADDITIONAL INFORMATION FROM USDA NRCS, 2018	

ENGINEER'S SEAL

REVISIONS:				
REV	DESCRIPTION	BY	DATE	
0	ISSUED FOR PLAN OF OPERATIONS	AKB	02/2019	
1	ROAD SNAPSHOTS, MODIFIED 6900 ROAD	AKB	05/2019	
2	DISTURBANCE AREAS, BUILDING AREAS	AKB	09/2019	

DESIGNED BY:	AKB
DRAWN BY:	TCH
CHECKED BY:	AKB
APPROVED BY:	PEK

PREPARED FOR:



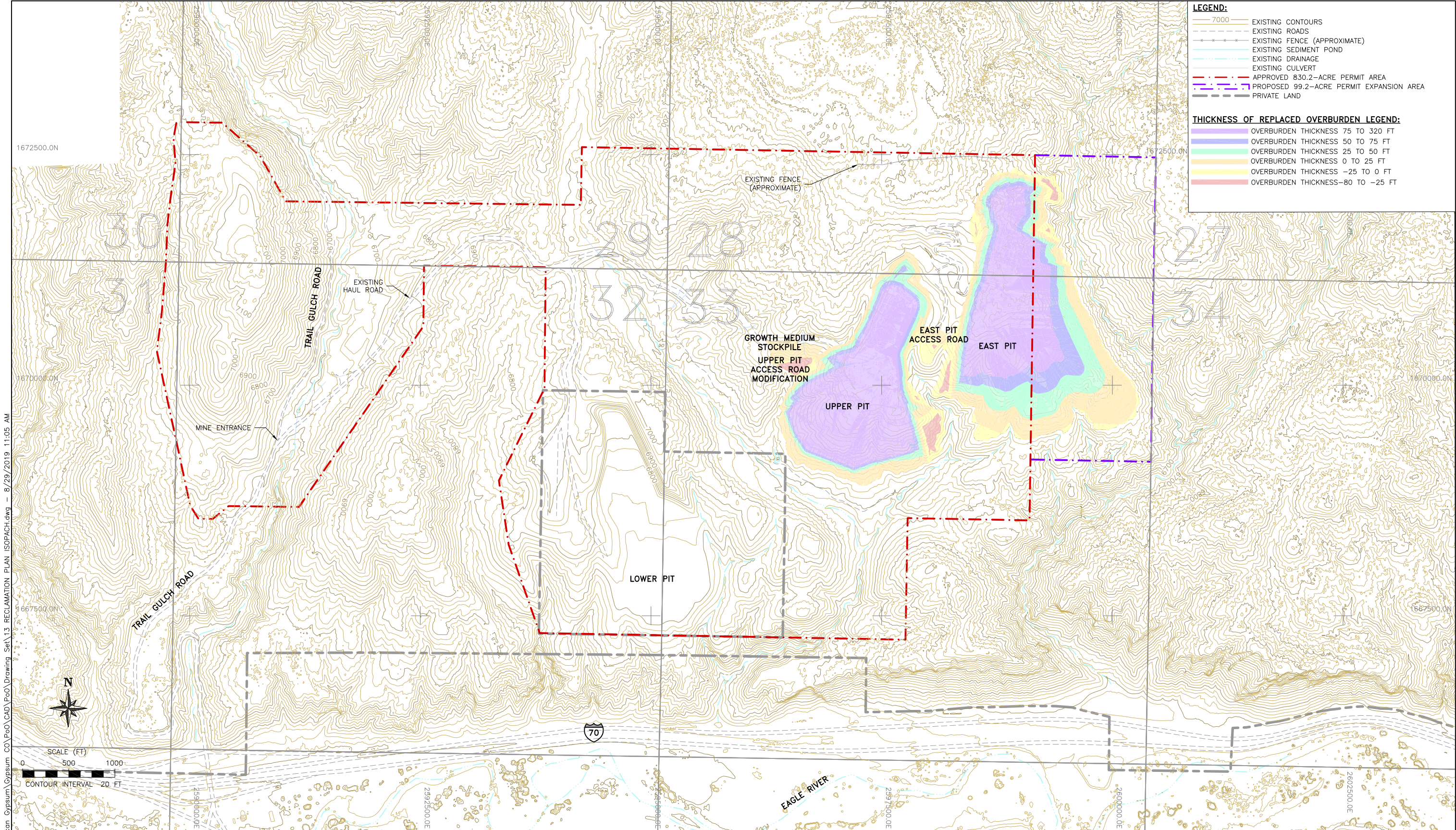
PREPARED BY:



TITLE:
**PROPOSED DISTURBANCE RECLAMATION
GRADING CROSS-SECTIONS**

PROJECT: PLAN OF OPERATIONS	PROJECT #: 375	DRAWING #: 12
LOCATION: GYPSUM, COLORADO	DATE: SEPTEMBER 2019	SHEET: 12 OF 16

2
REVISION



REFERENCE:
DATUM IS NAD 83 COLORADO CENTRAL STATE PLANE
TOPOGRAPHY IS FROM COMPASSDATA, 2015 AND 2016
SUPPLEMENTAL TOPOGRAPHY FROM GAMBA, 2018 AND GAMBA, 2019
ADDITIONAL INFORMATION FROM USDA NRCS, 2018

ENGINEER'S SEAL

REVISIONS:				
REV	DESCRIPTION	BY	DATE	
0	ISSUED FOR PLAN OF OPERATIONS	AKB	02/2019	
1	ROAD SNAPSHOTS, MODIFIED 6900 ROAD	AKB	05/2019	
2	DISTURBANCE AREAS, BUILDING AREAS	AKB	09/2019	


DESIGNED BY:	AKB
DRAWN BY:	TCH
CHECKED BY:	AKB
APPROVED BY:	PEK

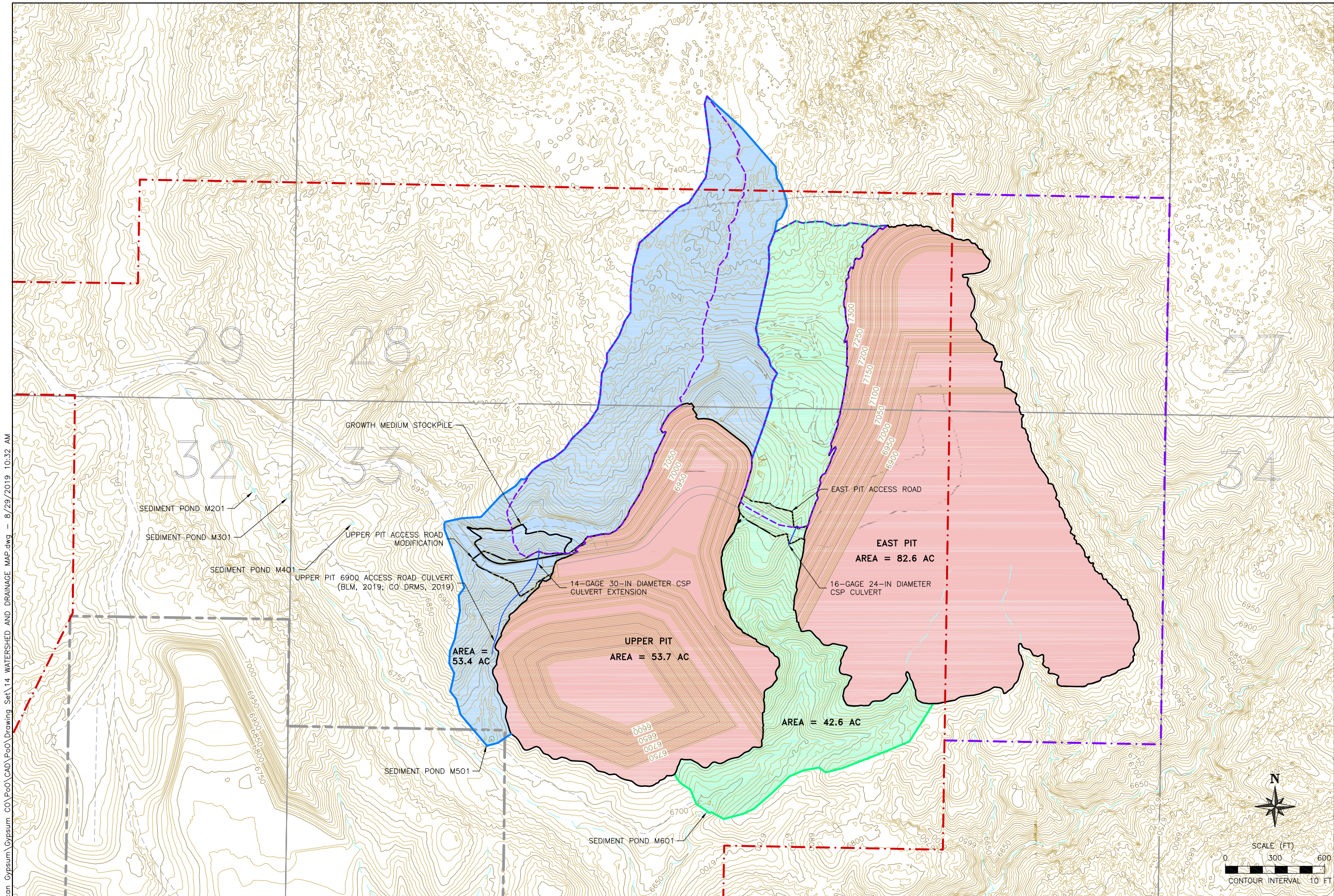
PREPARED FOR:



PREPARED BY:



TITLE: PROPOSED DISTURBANCE RECLAMATION GRADING ISOPACH			 REVISION
PROJECT: PLAN OF OPERATIONS	PROJECT #: 375	DRAWING #: 13	
LOCATION: GYPSUM, COLORADO	DATE: SEPTEMBER 2019	SHEET: 13 OF 16	



- LEGEND:**
- 7000 WATERSHED CONTOURS
 - PROPOSED ACTIVITIES
 - EXISTING ROADS
 - PROPOSED ROADS
 - EXISTING SEDIMENT POND
 - EXISTING DRAINAGE
 - EXISTING CULVERT
 - UPPER PIT 6900 ACCESS ROAD CULVERT (BLM, 2019; CO DRMS, 2019)
 - PROPOSED CULVERT
 - APPROVED 830.2-ACRE PERMIT AREA
 - PROPOSED 99.2-ACRE EXPANSION AREA
 - PRIVATE LAND
 - M501 WATERSHED BASIN
 - M601 WATERSHED BASIN
 - PIT AREAS
 - ROAD/STOCKPILE LIMITS
 - CULVERT WATERSHED BASIN

REFERENCE:
DATUM IS NAD 83 COLORADO CENTRAL STATE PLANE
TOPOGRAPHY IS FROM COMPASSDATA, 2015 AND 2016
SUPPLEMENTAL TOPOGRAPHY FROM GAMBA, 2018 AND GAMBA, 2019
ADDITIONAL INFORMATION FROM USDA NRCS, 2018

ENGINEER'S SEAL

REVISIONS:				
REV	DESCRIPTION	BY	DATE	
0	ISSUED FOR PLAN OF OPERATIONS	AKB	02/2019	
1	ROAD SNAPSHOTS, MODIFIED 6900 ROAD	AKB	05/2019	
2	DISTURBANCE AREAS, BUILDING AREAS	AKB	09/2019	

DESIGNED BY:	AKB
DRAWN BY:	TCH
CHECKED BY:	AKB
APPROVED BY:	PEK

PREPARED FOR:



PREPARED BY:



TITLE:
WATERSHED AND DRAINAGE MAP

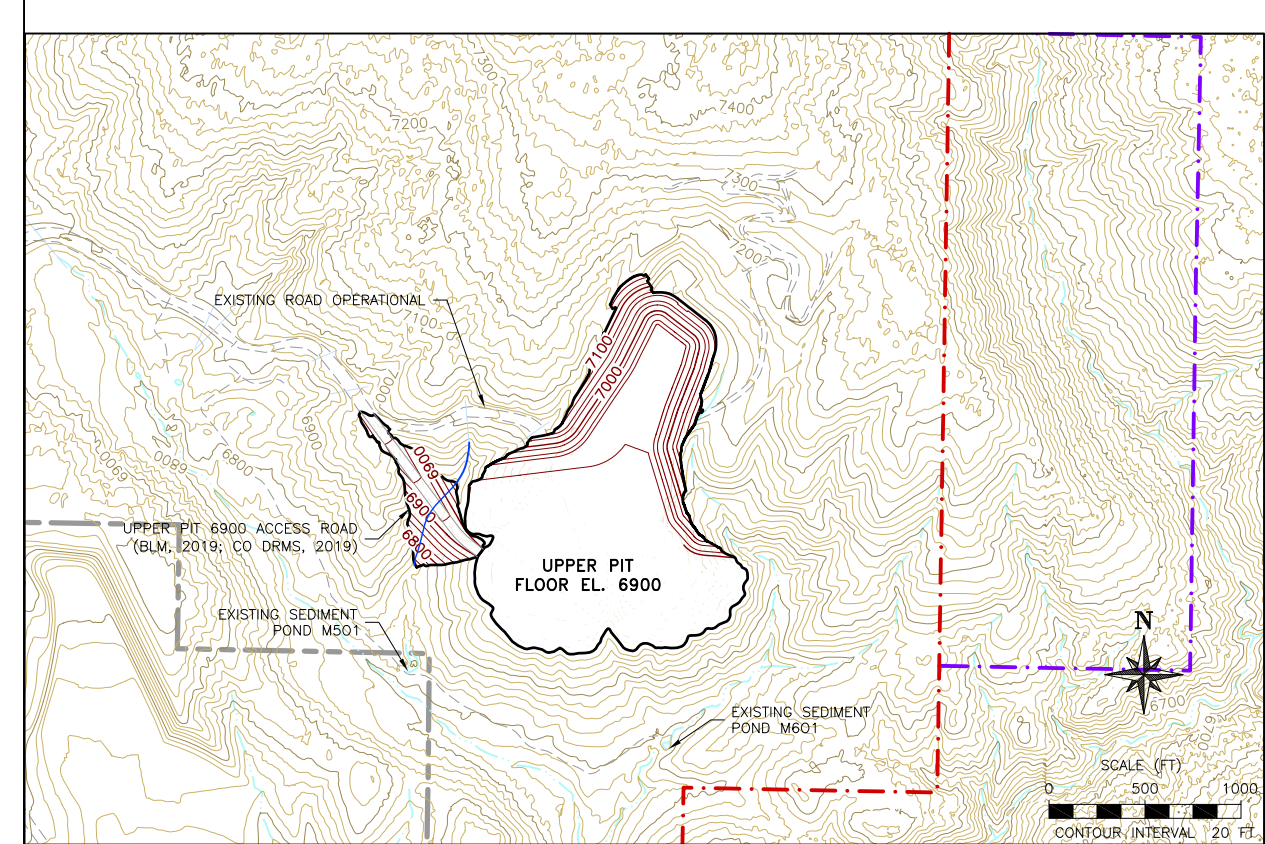
PROJECT: PLAN OF OPERATIONS	PROJECT #: 375	DRAWING #: 14
LOCATION: GYPSUM, COLORADO	DATE: SEPTEMBER 2019	SHEET: 14 OF 16



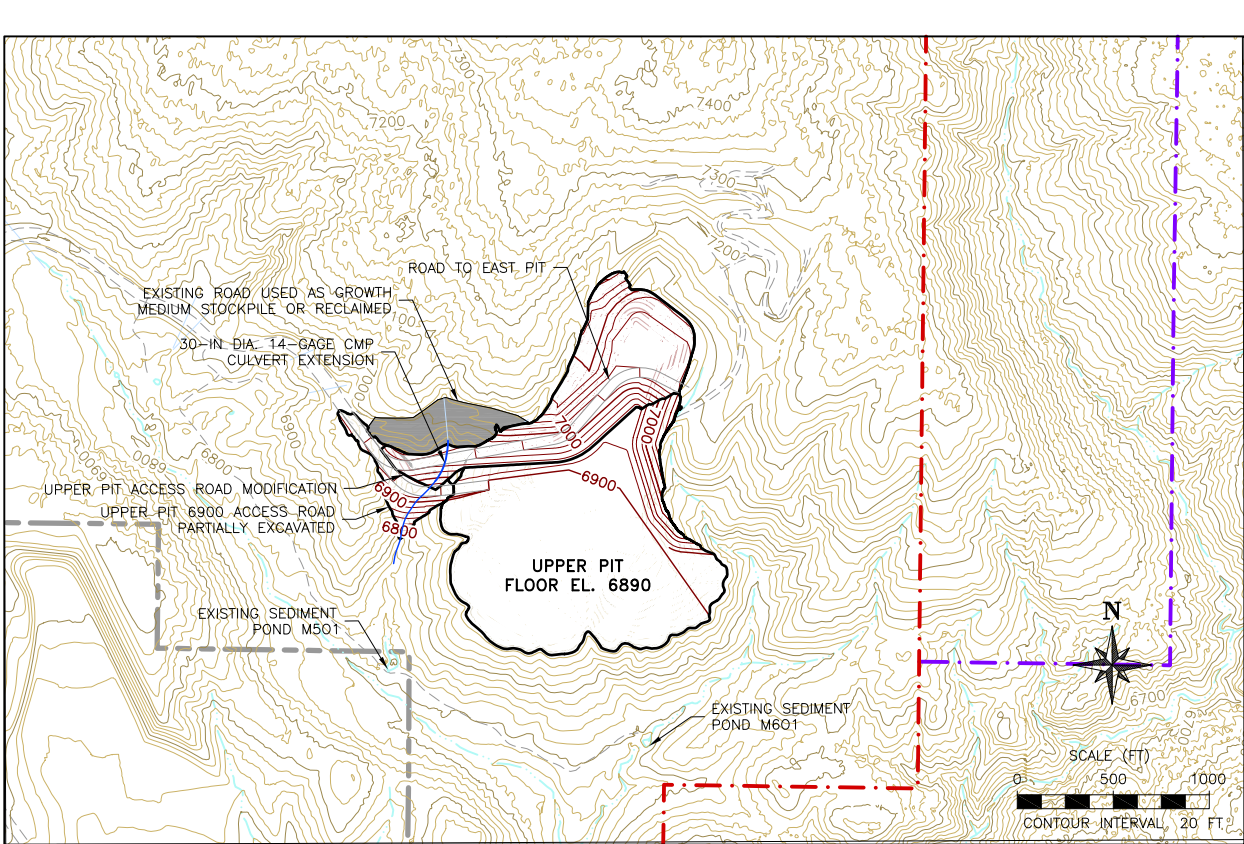


REFERENCE: DATUM IS NAD 83 COLORADO CENTRAL STATE PLANE TOPOGRAPHY IS FROM COMPASSDATA, 2015 AND 2016 SUPPLEMENTAL TOPOGRAPHY FROM GAMBA, 2018 AND GAMBA, 2019 ADDITIONAL INFORMATION FROM USDA NRCS, 2018 <

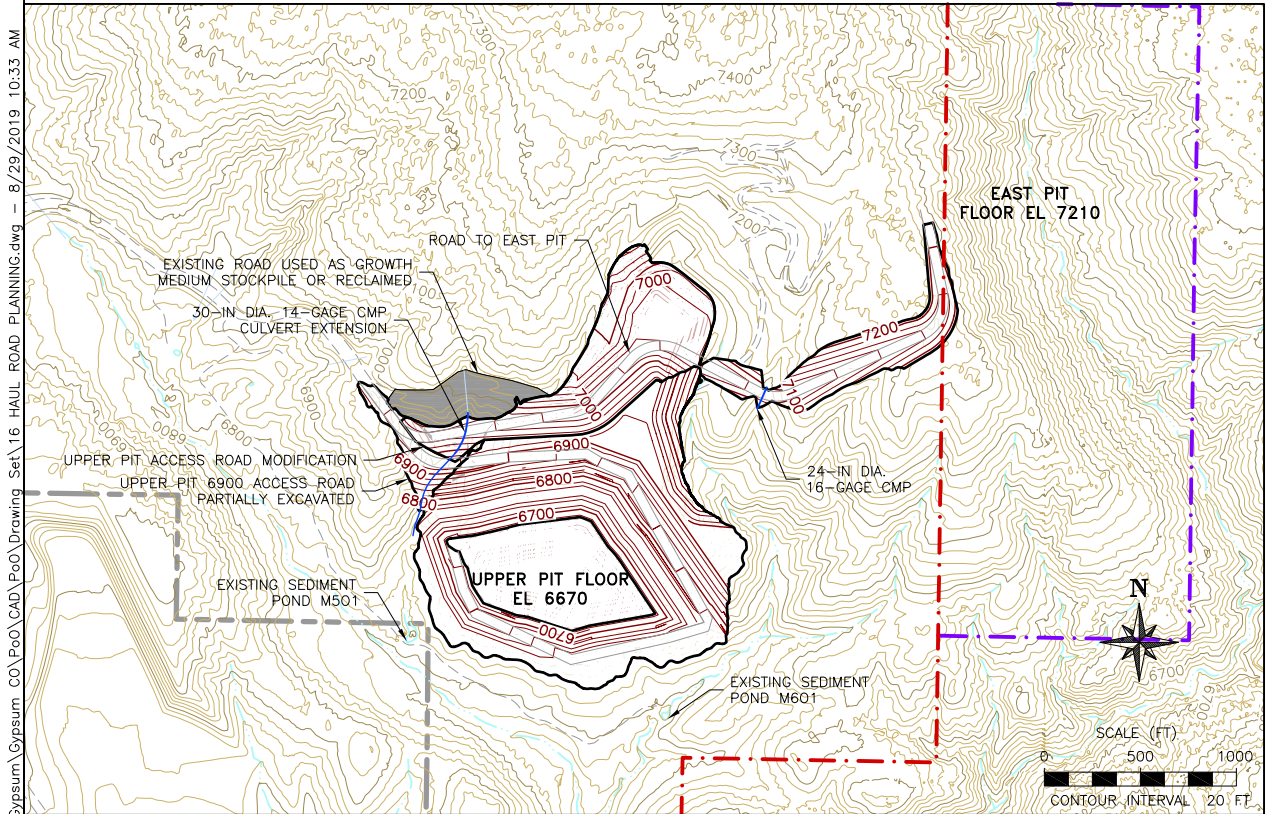
Z:\American Gypsum\Gypsum CO\PeO\CAD\Drawing Set\16 HAUL ROAD PLANNING.dwg -- 8/29/2019 10:33 AM
Adrien Butler



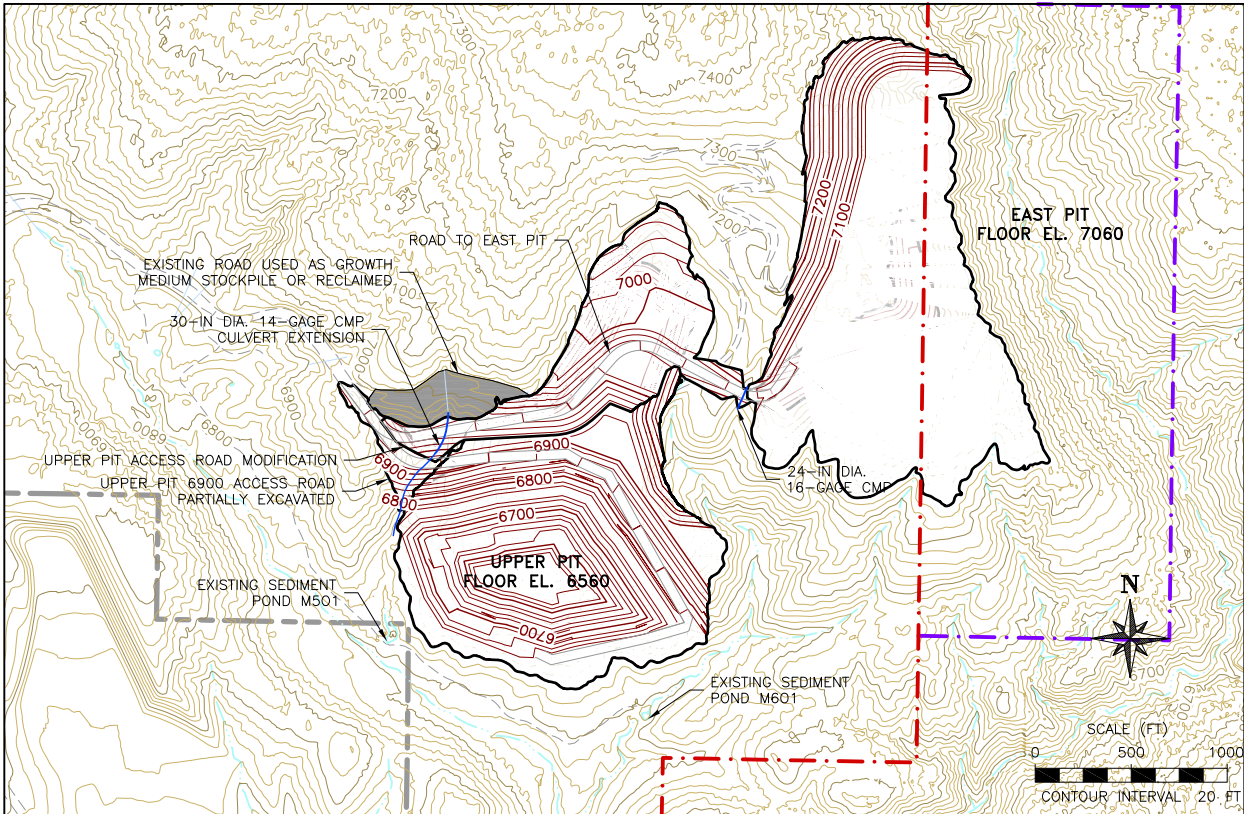
UPPER PIT 6900 ACCESS ROAD COMPLETED



EAST PIT ACCESS ROAD PARTIALLY COMPLETED



EAST PIT ACCESS ROAD COMPLETED AND TYPICAL UPPER PIT INTERIOR ROAD



EAST PIT ACCESS ROAD PARTIALLY MINED OUT WITHIN EAST PIT AND TYPICAL UPPER PIT INTERIOR ROAD

LEGEND:

- EXISTING CONTOURS
- PROPOSED CONTOURS
- PROPOSED ACTIVITIES
- EXISTING ROADS
- PROPOSED ROADS
- EXISTING SEDIMENT POND
- EXISTING DRAINAGE
- EXISTING CULVERT
- PROPOSED CULVERT
- REMOVED CULVERT
- APPROVED 830.2-ACRE PERMIT AREA
- PROPOSED 99.2-ACRE EXPANSION AREA
- PRIVATE LAND

REFERENCE:
DATUM IS NAD 83 COLORADO CENTRAL STATE PLANE
TOPOGRAPHY IS FROM COMPASSDATA, 2015 AND 2016
SUPPLEMENTAL TOPOGRAPHY FROM GAMBA, 2018 AND GAMBA, 2019
ADDITIONAL INFORMATION FROM USDA NRCS, 2018

ENGINEER'S SEAL

REV	DESCRIPTION	BY	DATE
0	ISSUED FOR PLAN OF OPERATIONS	AKB	02/2019
1	ROAD SNAPSHOTS, MODIFIED 6900 ROAD	AKB	05/2019
2	DISTURBANCE AREAS, BUILDING AREAS	AKB	09/2019

DESIGNED BY:	AKB
DRAWN BY:	TCH
CHECKED BY:	AKB
APPROVED BY:	PEK

PREPARED FOR:



PREPARED BY:



TITLE:

HAUL ROAD PLANNING

PROJECT:	PROJECT #:	DRAWING #:
PLAN OF OPERATIONS	375	16
LOCATION:	DATE:	SHEET:
GYPSUM, COLORADO	SEPTEMBER 2019	16 OF 16

