
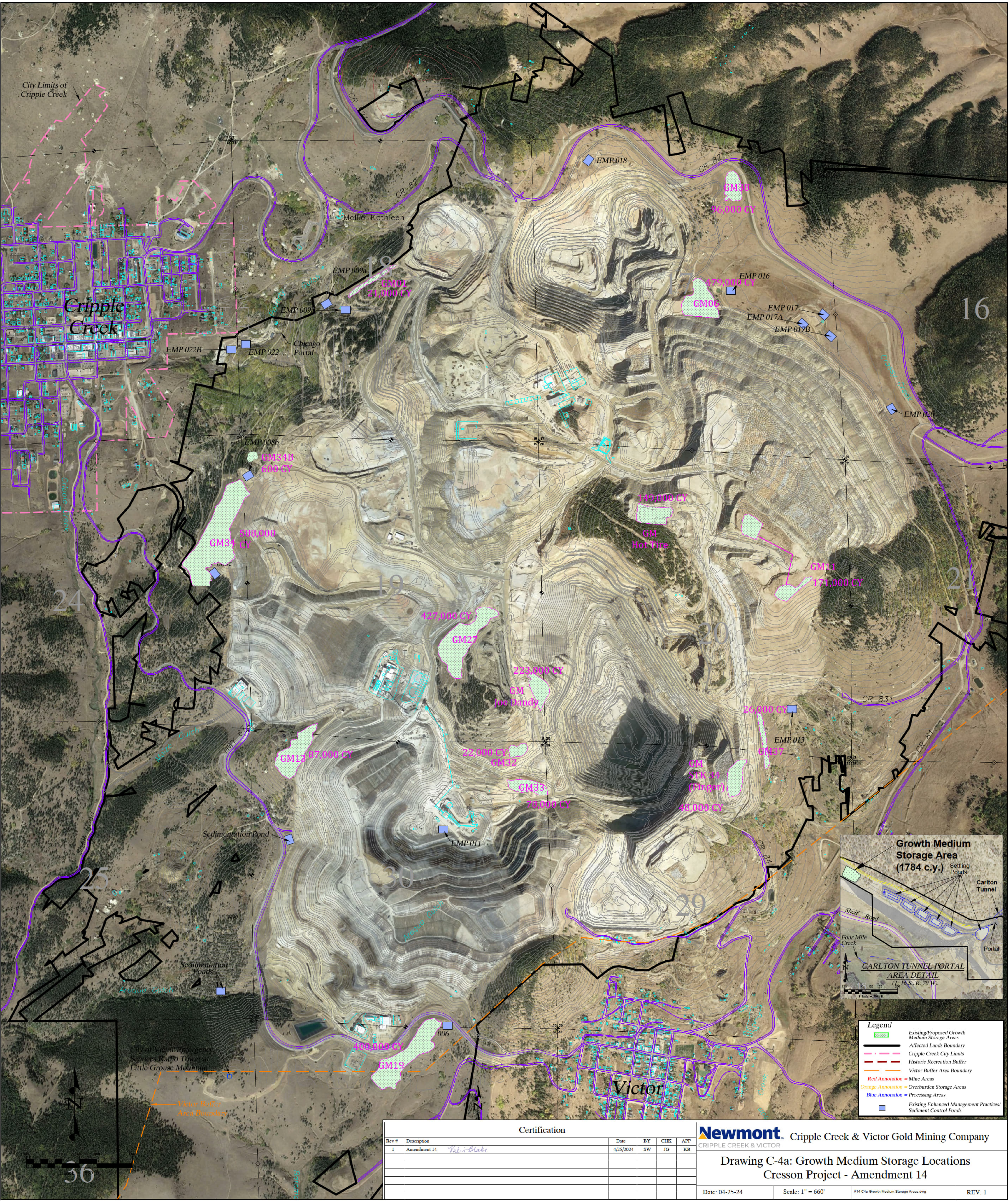


Certification						
Rev #	Description	Date	BY	CHK	APP	
1	Amendment 14 <i>John Blake</i>	7/2/2024	SW	JG	KB	

**Newmont** Cripple Creek & Victor Gold Mining Company
CRIPPLE CREEK & VICTOR

Drawing C-4: Changes in Disturbance Categories
Cresson Project - Amendment 14

Date: 07-02-24Scale: 1" = 660' A14 C4 Changes in Disturbance.dwgREV: 1

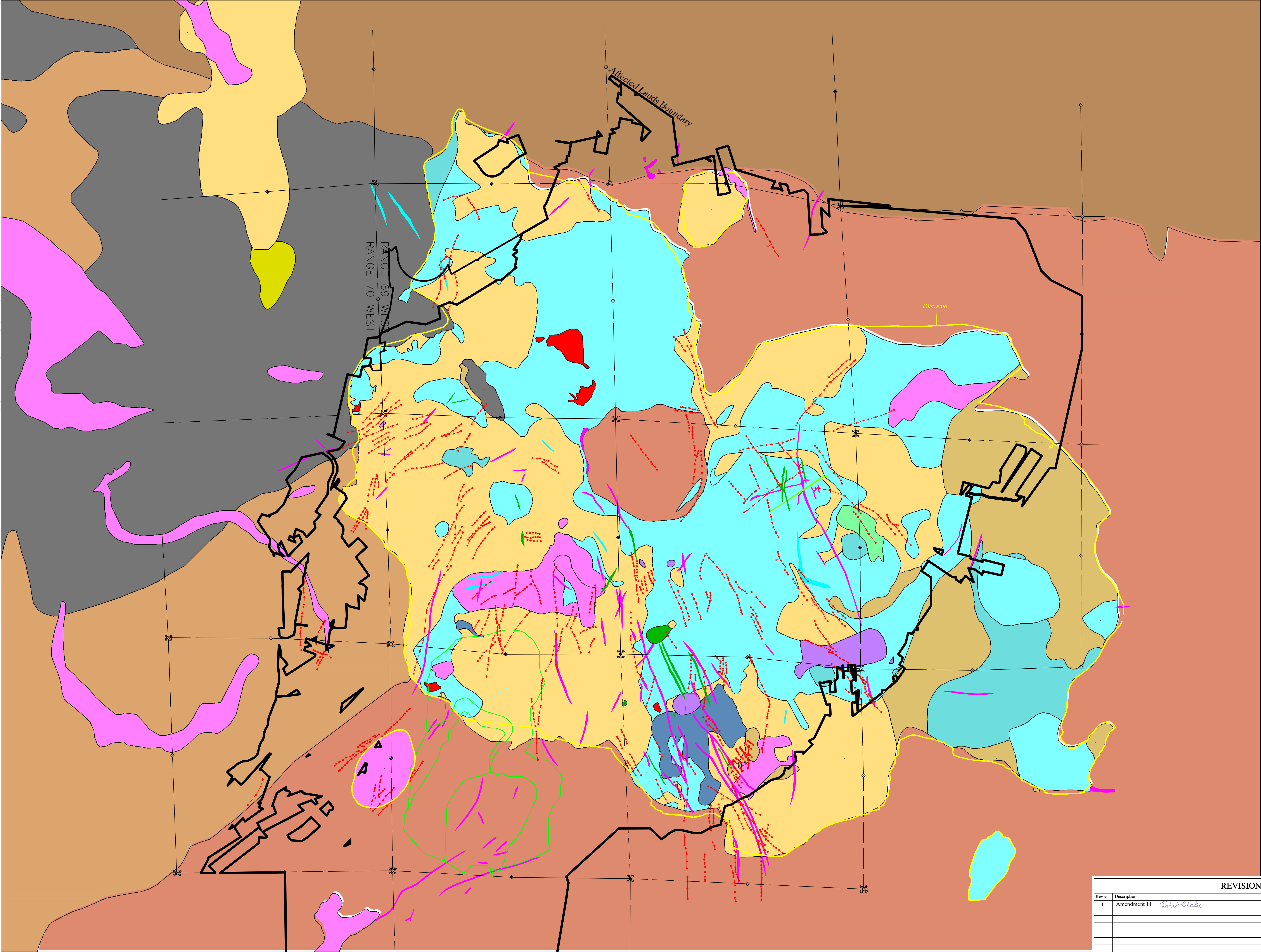


Certification						
Rev #	Description	Date	BY	CHK	APP	
1	Amendment 14 <i>Katie Blake</i>	4/25/2024	SW	JG	KB	

Newmont Cripple Creek & Victor Gold Mining Company
CRIPPLE CREEK & VICTOR

Drawing C-4a: Growth Medium Storage Locations
Cresson Project - Amendment 14

Date: 04-25-24Scale: 1" = 660' A14 C4a Growth Medium Storage Areas.dwgREV: 1



EXPLANATION

LAMPROPHYRES

Thbx

Thx - Hydrothermal Breccia
Late stage breccia pipes consisting of angular to rounded, heterolithic clasts in a rock flour matrix. Typically associated with pervasive argillic alteration.

Tlh

Tlh - Hornblende bearing - Lamprophyre Dike
Dark-green to greenish-black, fine-to medium-grained porphyry with hornblende, pyroxene and olivine phenocrysts in an analcine matrix with minor amounts of orthoclase, magnetite and apatite.

Tlb

Tlb - Biotite bearing - Lamprophyre Dike
Dark-green, fine-to medium-grained porphyry with biotite phenocrysts in a fine-grained groundmass consisting of analcine, alkali feldspar, biotite, hornblende and minor magnetite.

Tlhx

Tlhx - Lamprophyre Breccia
Late-stage lamprophyric breccia pipe consisting of both matrix and clast supported heterolithic breccia with abundant dark-green lamprophyre clasts and variable late carbonate alteration.

Ttd

Ttd - Phonotephrite
Dark-gray, fine-grained to porphyritic dikes and sills with variable trachytic texture. Ground mass composed of fine-grained plagioclase, orthoclase, analcine, pyroxene and olivine as well as minor hornblende and magnetite.

Ttdl

Ttd - Phonotephrite Dike
Same as Ttd

Tsy

Tsy - Tephriphonolite
Grey, medium-to fine-grained intrusive composed of orthoclase, plagioclase, pyroxene and minor hornblende and analcine, commonly occurring as small to medium sized stocks.

TERTIARY

Tphd

Tphd - Phonolite Dike
Same as Tph

Tph

Tph - Phonolite
Grey, brown or pink, aphanitic phonolite composed of fine-grained orthoclase, nepheline, minor aegirine-augite, and analcine.

Tphkd

Tphkd - Feldspar bearing - Plagioclase Phonolite Dike
Same as Tphk

Tphk

Tphk - Feldspar bearing - Plagioclase Phonolite
Light-to medium-grey, porphyry with subhedral to euhedral, medium-to coarse-grained phenocrysts of alkali feldspar with minor amounts of feldspatoids, glassy apatite and pyroxenes.

Tphh

Tphh - Hornblende\Pyroxene bearing - Plagioclase Phonolite
Grey, medium-grained porphyry with euhedral to subhedral hornblende, aegirine-augite, and alkali feldspar phenocrysts.

Tphb

Tphb - Biotite bearing - Plagioclase Phonolite
Gray, fine-grained porphyry with euhedral biotite and alkali feldspar phenocrysts.

PHONOLITES

Tphk

Tphk - Feldspar bearing - Plagioclase Phonolite
Light-to medium-grey, porphyry with subhedral to euhedral, medium-to coarse-grained phenocrysts of alkali feldspar with minor amounts of feldspatoids, glassy apatite and pyroxenes.

Tphh

Tphh - Hornblende\Pyroxene bearing - Plagioclase Phonolite
Grey, medium-grained porphyry with euhedral to subhedral hornblende, aegirine-augite, and alkali feldspar phenocrysts.

Tphb

Tphb - Biotite bearing - Plagioclase Phonolite
Gray, fine-grained porphyry with euhedral biotite and alkali feldspar phenocrysts.

BRECCIAS

Tbx1

Tbx1L - Cripple Creek Lapilli Breccia
Generally massive, structureless, matrix supported breccia that is poorly sorted, typical of diatremal crater fill breccia. Clasts are sub-angular to sub-rounded and primarily composed of various phonolite units with occasional Precambrian fragments. Commonly shows varying degrees of hydrothermal alteration.

Tbx2

Tbx2 - Cripple Creek Breccia-Bedded (Oligocene)
Variably stratified volcanoclastic breccia with matrix and clast compositions much the same as Tbx1L. Locally occurs in thinly bedded base surge deposits.

Tep

Tep - Echo Park Alluvium (Eocene)
Red to rust colored sandy conglomerate composed of rounded clasts of Precambrian rocks

PRECAMBRIAN

Ypp

Ypp - Pikes Peak Granite
Massive, pink to reddish tan, medium-to coarse-grained, biotite-hornblende-microcline granite.

Ycc

Ycc - Cripple Creek Quartz Monzonite
Massive, pink, medium-grained, biotite-muscovite quartz monzonite.

Xgd

Xgd - Granodiorite
Massive to foliated, medium-to coarse-grained, hornblende-biotite granodiorite. Locally occurs as an augen gneiss. Includes diabase dikes and schistose lenses.

Xgnb

Xgnb - Biotite Gneiss
Strongly foliated, biotite-quartz-plagioclase gneiss to schist, which is locally migmatitic.

Interpreted Geologic Contact

Surface Projection of Major Veins

Brecciated Units

1000 0 500 1000 2000

1 inch = 1000 ft.

REVISIONS					
Rev #	Description	Date	BY	CHK	APP
1	Amendment 14 <i>Notes Added</i>	7/2/2024	SW	JG	KB
Date: 07-02-24		Scale: 1"=1000'	File: A14 C5 District Geology.dwg	REV: 1	

Newmont Cripple Creek & Victor Gold Mining Company

Drawing C-5: District Geology
Cresson Project - Amendment 14