

Permit M-1980-244

Cresson Project Amendment 14

Exhibit C

Pre-Mining and Mining Plan Maps of Affected Lands

TABLE OF CONTENTS

| | |
|----------------------|---|
| DRAWING C-1: | AFFECTED LANDS BOUNDARY AND ADJACENT LAND OWNERS (4 PLATES) |
| DRAWING C-1A: | AFFECTED LANDS BOUNDARY AND ADJACENT LAND OWNERS WITH PERMANENT MANMADE STRUCTURES (PLATE 1 OF 4 ONLY) |
| DRAWING C-2: | EXISTING AND APPROVED FACILITIES |
| DRAWING C-2B: | EXISTING UTILITIES |
| DRAWING C-3: | PROPOSED FACILITIES – BUILDINGS AND UTILITIES |
| DRAWING C-4: | CHANGES IN DISTURBANCE CATEGORIES |
| DRAWING C-4A: | GROWTH MEDIUM STORAGE LOCATIONS |
| DRAWING C-5: | DISTRICT GEOLOGY |
| DRAWING C-6: | OWNERS OF RECORD OF AFFECTED LANDS (4 PLATES) |

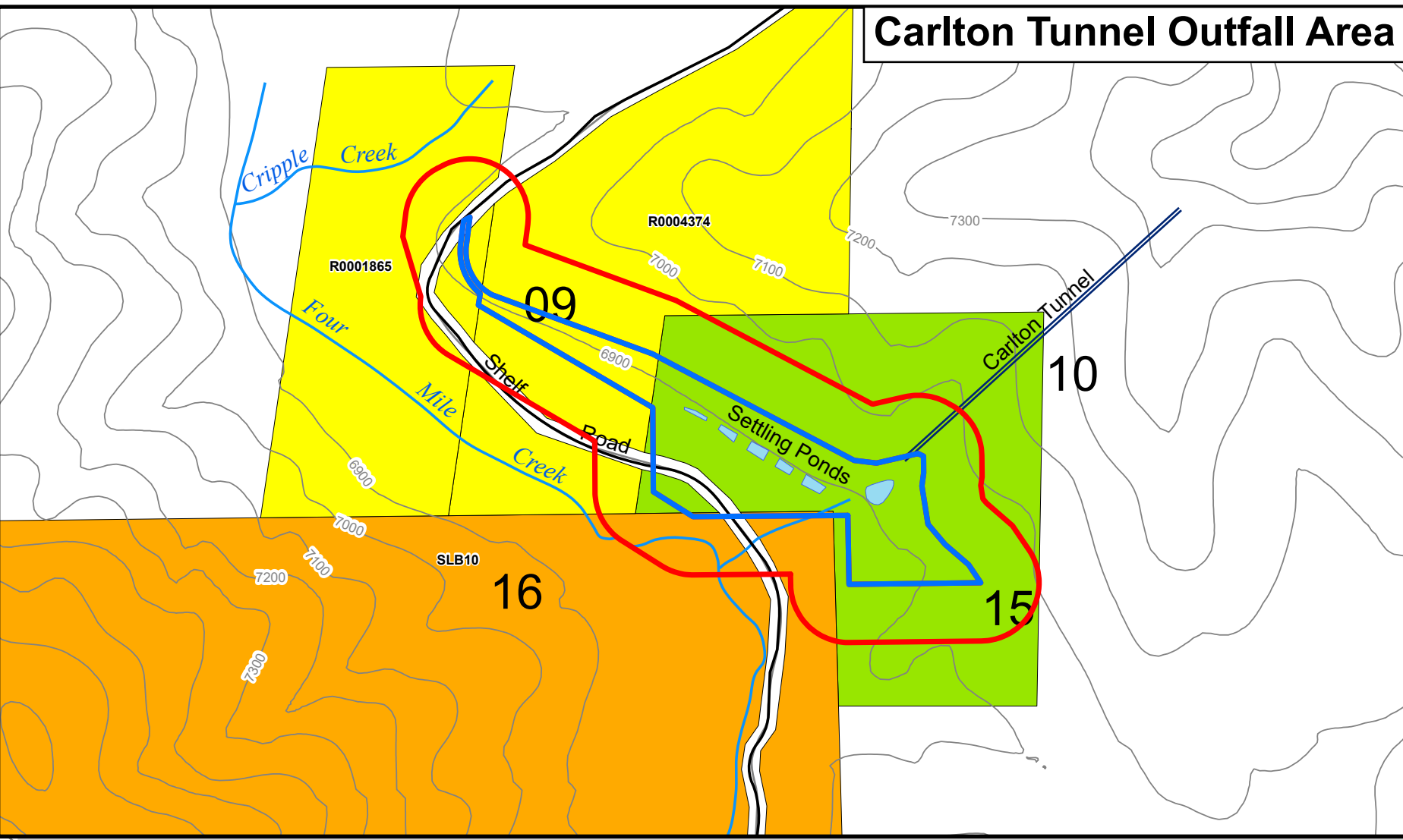
Legend

- Affected Lands Boundary
- Affected Lands 200 Ft. Buffer
- City Limit
- Section Line
- Major Road or Highway
- Paved Local Road
- Unpaved Local Road
- Topographic Elevation Contour Line (feet above mean sea level)
- Stream

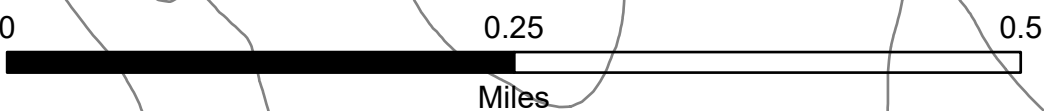
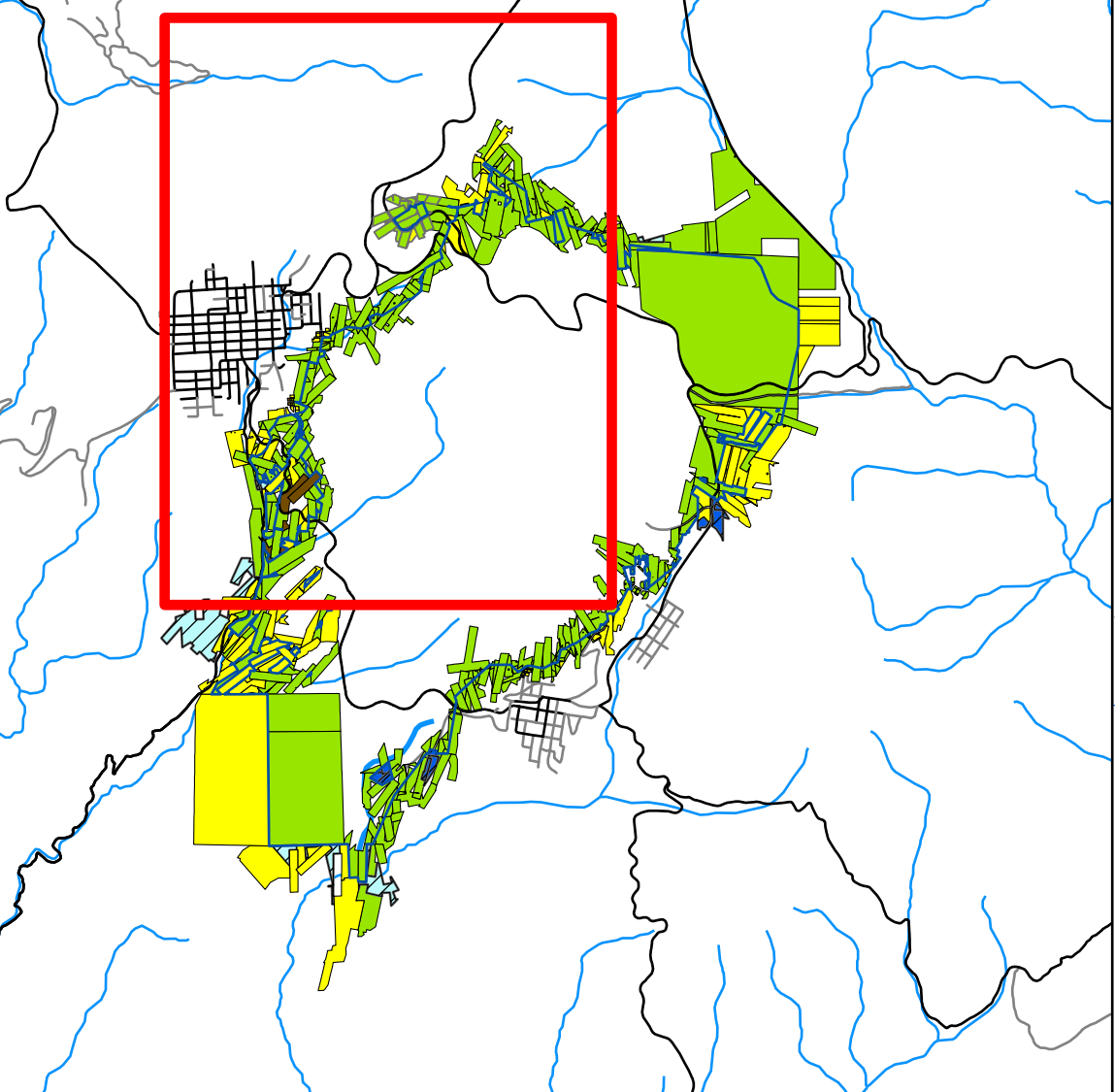
Adjacent Land Owners within 200 ft Buffer of Affected Lands Boundary

- CC&V Gold Mining Company
- City of Cripple Creek
- City of Victor
- CC&V Railroad
- Bureau of Land Management (BLM10)
- Colorado State Land Board (SLB10)
- Private Third Party with Teller County Assessor

Carlton Tunnel Outfall Area



Map Extent Indicator



R70W

R69W

Cripple Creek

13

18

17

24

19

20

Poverty Gulch

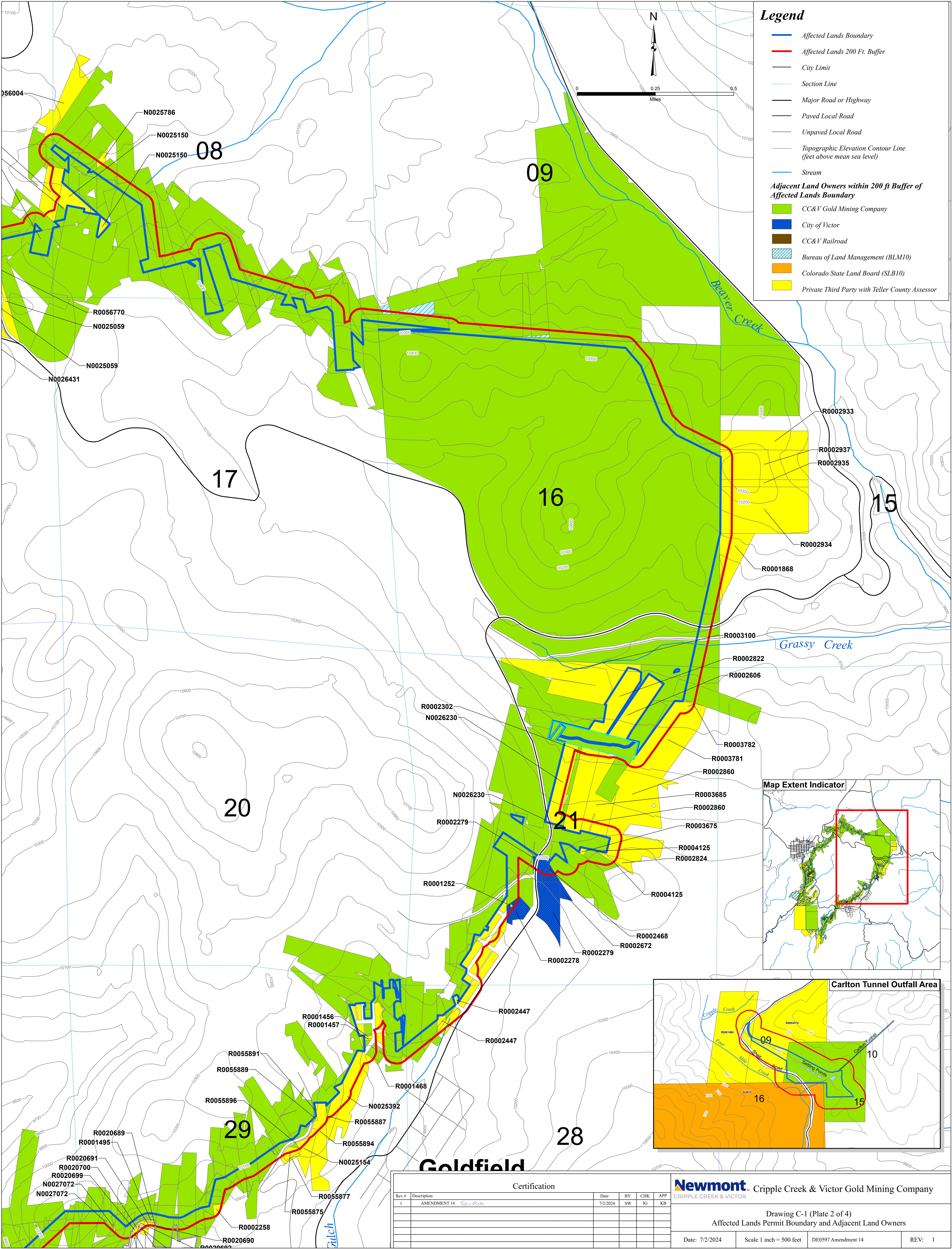
Maize Gulch

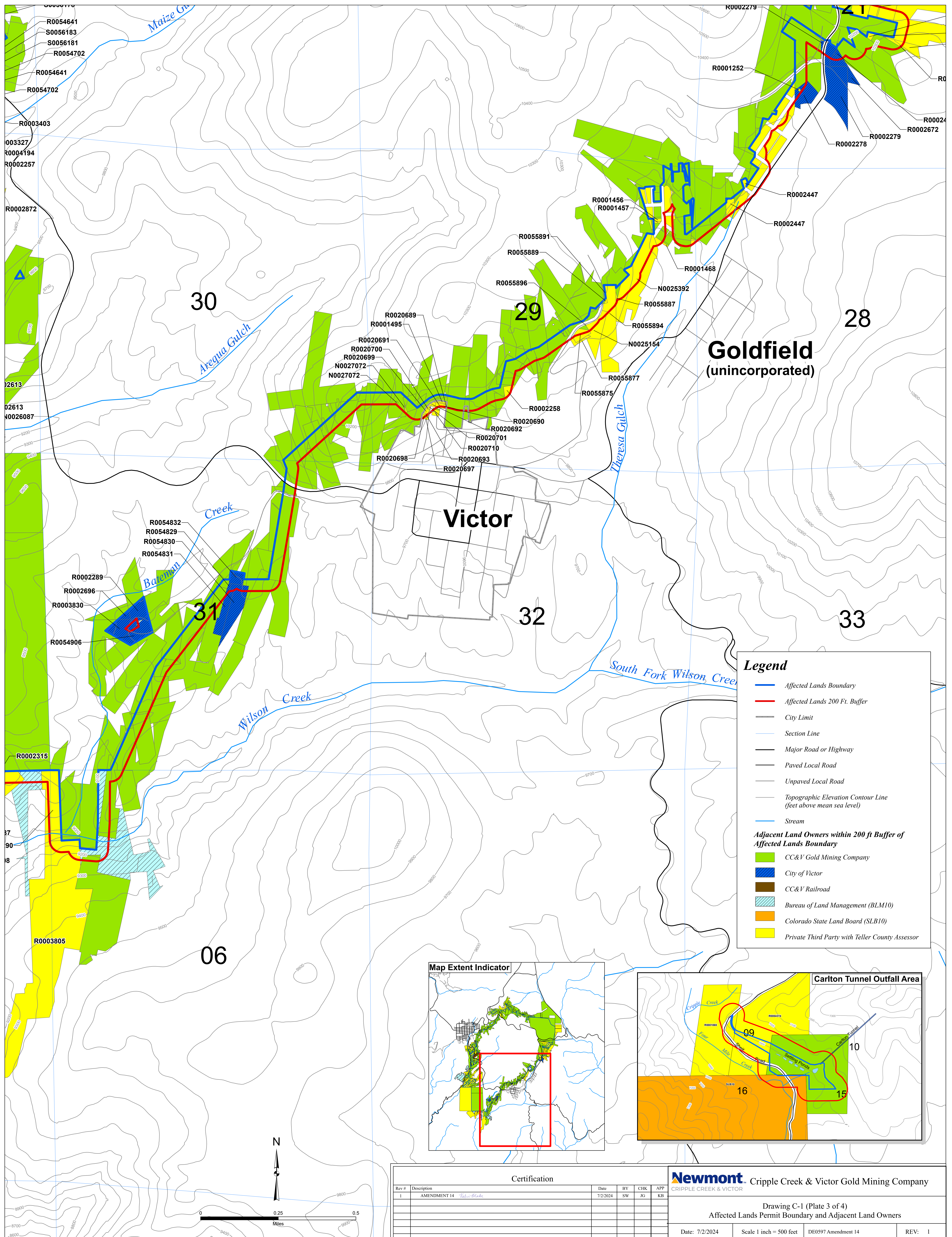
| Certification | | | | | | |
|---------------|------------------------------|----------|----|-----|-----|--|
| Rev # | Description | Date | BY | CHK | APP | |
| 1 | AMENDMENT 14 <i>Kefauver</i> | 7/2/2024 | SW | JG | KB | |
| | | | | | | |
| | | | | | | |
| | | | | | | |
| | | | | | | |
| | | | | | | |
| | | | | | | |
| | | | | | | |
| | | | | | | |

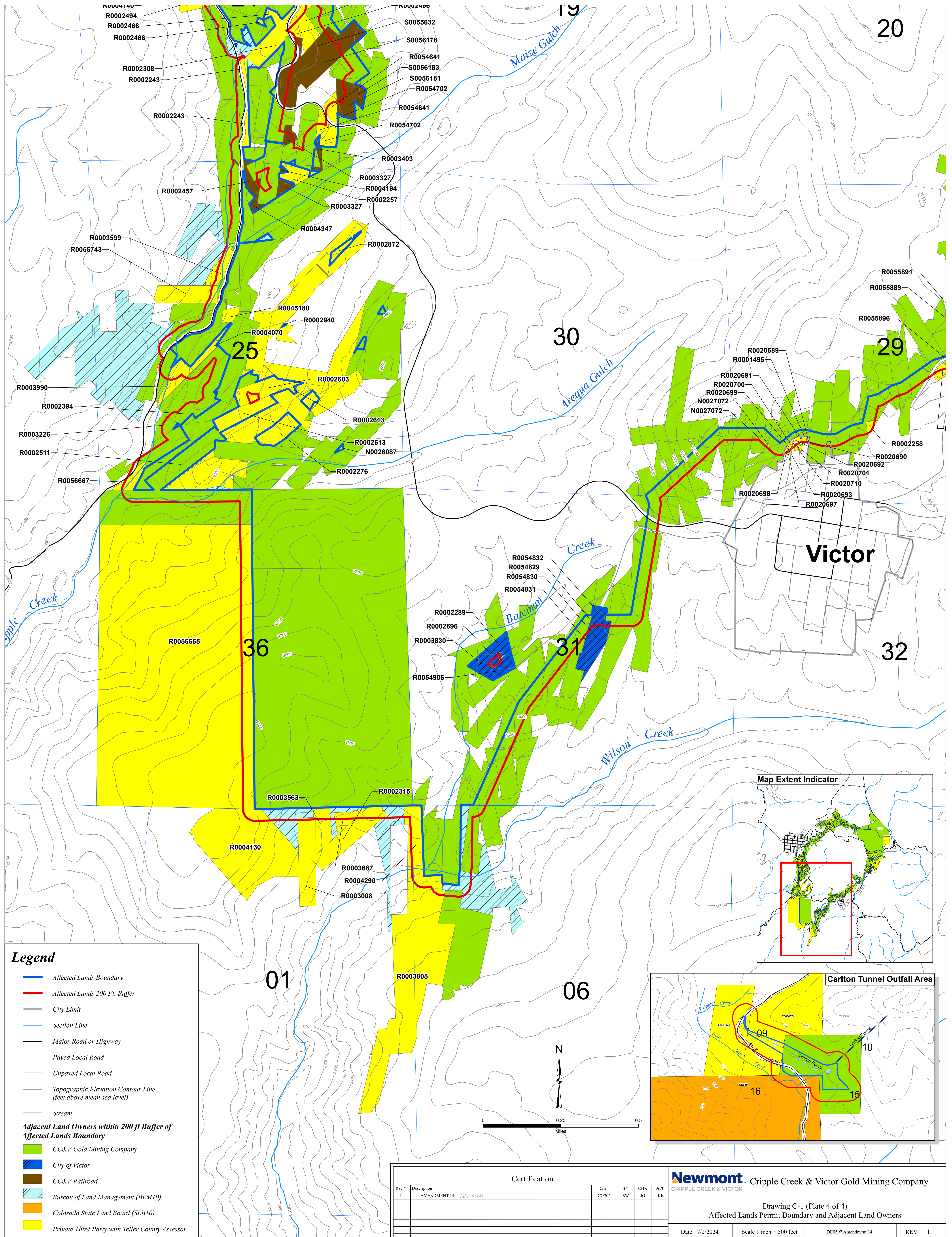
Newmont Cripple Creek & Victor Gold Mining Company
CRIPPLE CREEK & VICTOR

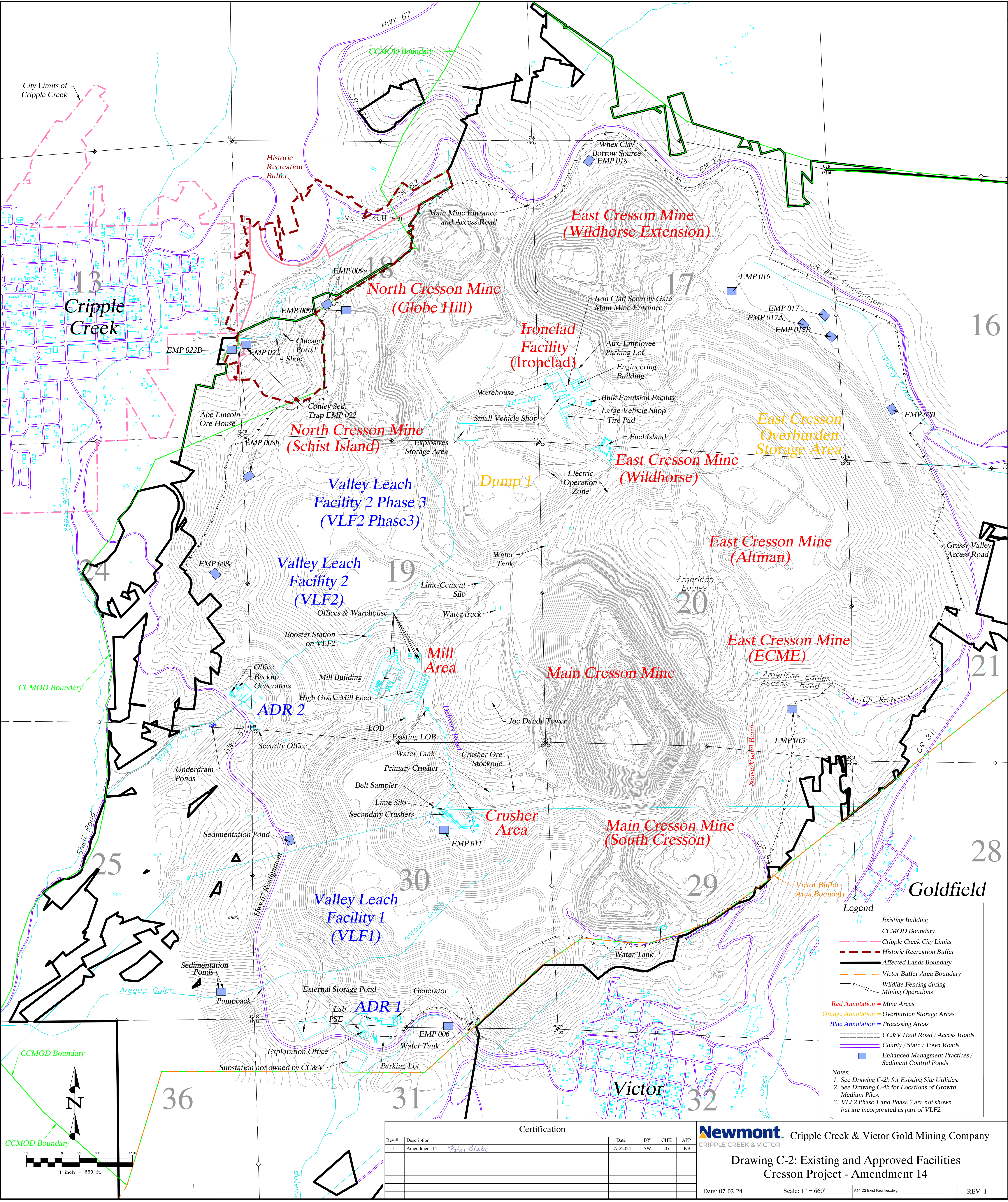
Drawing C-1 (Plate 1 of 4)
Affected Lands Permit Boundary and Adjacent Land Owners

Date: 7/2/2024 Scale 1 inch = 500 feet REV: 1







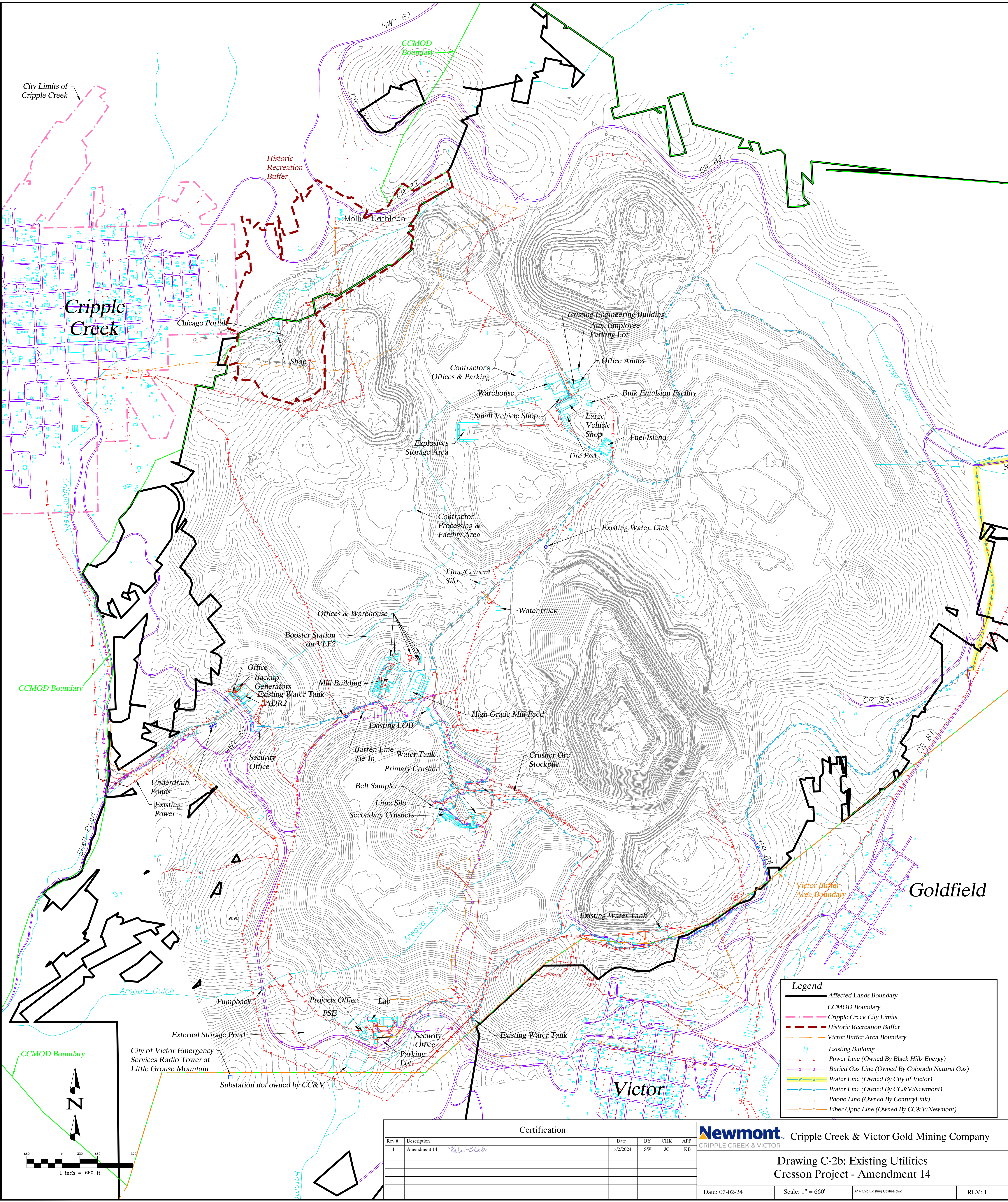


| Certification | | | | | | |
|---------------|---------------------------------|----------|----|-----|-----|--|
| Rev # | Description | Date | BY | CHK | APP | |
| 1 | Amendment 14 <i>Tatin-Blake</i> | 7/2/2024 | SW | JG | KB | |
| | | | | | | |
| | | | | | | |
| | | | | | | |
| | | | | | | |
| | | | | | | |
| | | | | | | |
| | | | | | | |
| | | | | | | |


Newmont Cripple Creek & Victor Gold Mining Company
CRIPPLE CREEK & VICTOR

Drawing C-2: Existing and Approved Facilities
Cresson Project - Amendment 14

Date: 07-02-24Scale: 1" = 660' A14 C2 Exist Facilities.dwgREV: 1



| Certification | | | | | | |
|---------------|--------------------------------|----------|----|-----|-----|--|
| Rev # | Description | Date | BY | CHK | APP | |
| 1 | Amendment 14 <i>Kate Blake</i> | 7/2/2024 | SW | JG | KB | |
| | | | | | | |
| | | | | | | |
| | | | | | | |
| | | | | | | |
| | | | | | | |
| | | | | | | |

**Newmont** Cripple Creek & Victor Gold Mining Company
CRIPPLE CREEK & VICTOR

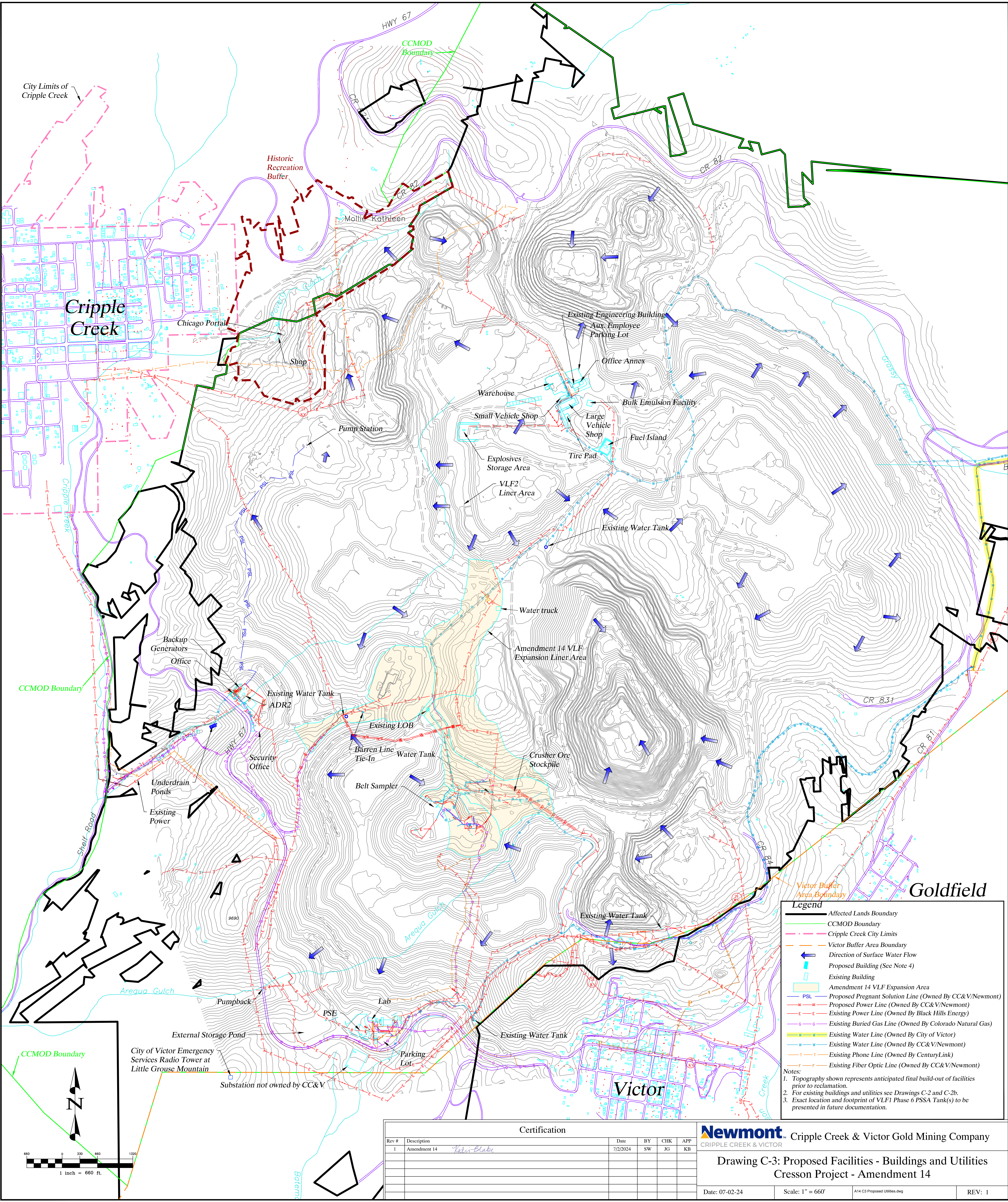
Drawing C-2b: Existing Utilities
Cresson Project - Amendment 14

Date: 07-02-24

Scale: 1" = 660'

A14 C2b Existing Utilities.dwg

REV: 1



Legend

- Affected Lands Boundary
- CCMOD Boundary
- Cripple Creek City Limits
- Victor Buffer Area Boundary
- Direction of Surface Water Flow
- Proposed Building (See Note 4)
- Existing Building
- Amendment 14 VLF Expansion Area
- PSL - Proposed Pregnant Solution Line (Owned By CC&V/Newmont)
- Proposed Power Line (Owned By CC&V/Newmont)
- Existing Power Line (Owned By Black Hills Energy)
- Existing Buried Gas Line (Owned By Colorado Natural Gas)
- Existing Water Line (Owned By City of Victor)
- Existing Water Line (Owned By CC&V/Newmont)
- Existing Phone Line (Owned By CenturyLink)
- Existing Fiber Optic Line (Owned By CC&V/Newmont)

Notes:

- Topography shown represents anticipated final build-out of facilities prior to reclamation.
- For existing buildings and utilities see Drawings C-2 and C-2b.
- Exact location and footprint of VLF1 Phase 6 PSSA Tank(s) to be presented in future documentation.

| Certification | | | | | |
|---------------|--------------------------------|----------|----|-----|-----|
| Rev # | Description | Date | BY | CHK | APP |
| 1 | Amendment 14 <i>Kali Blake</i> | 7/2/2024 | SW | JG | KB |
| | | | | | |
| | | | | | |
| | | | | | |
| | | | | | |
| | | | | | |
| | | | | | |

Newmont Cripple Creek & Victor Gold Mining Company
CRIPPLE CREEK & VICTOR

**Drawing C-3: Proposed Facilities - Buildings and Utilities
Cresson Project - Amendment 14**

Date: 07-02-24 Scale: 1" = 660' A14 C3 Proposed Utilities.dwg REV: 1