

Permit M-1980-244

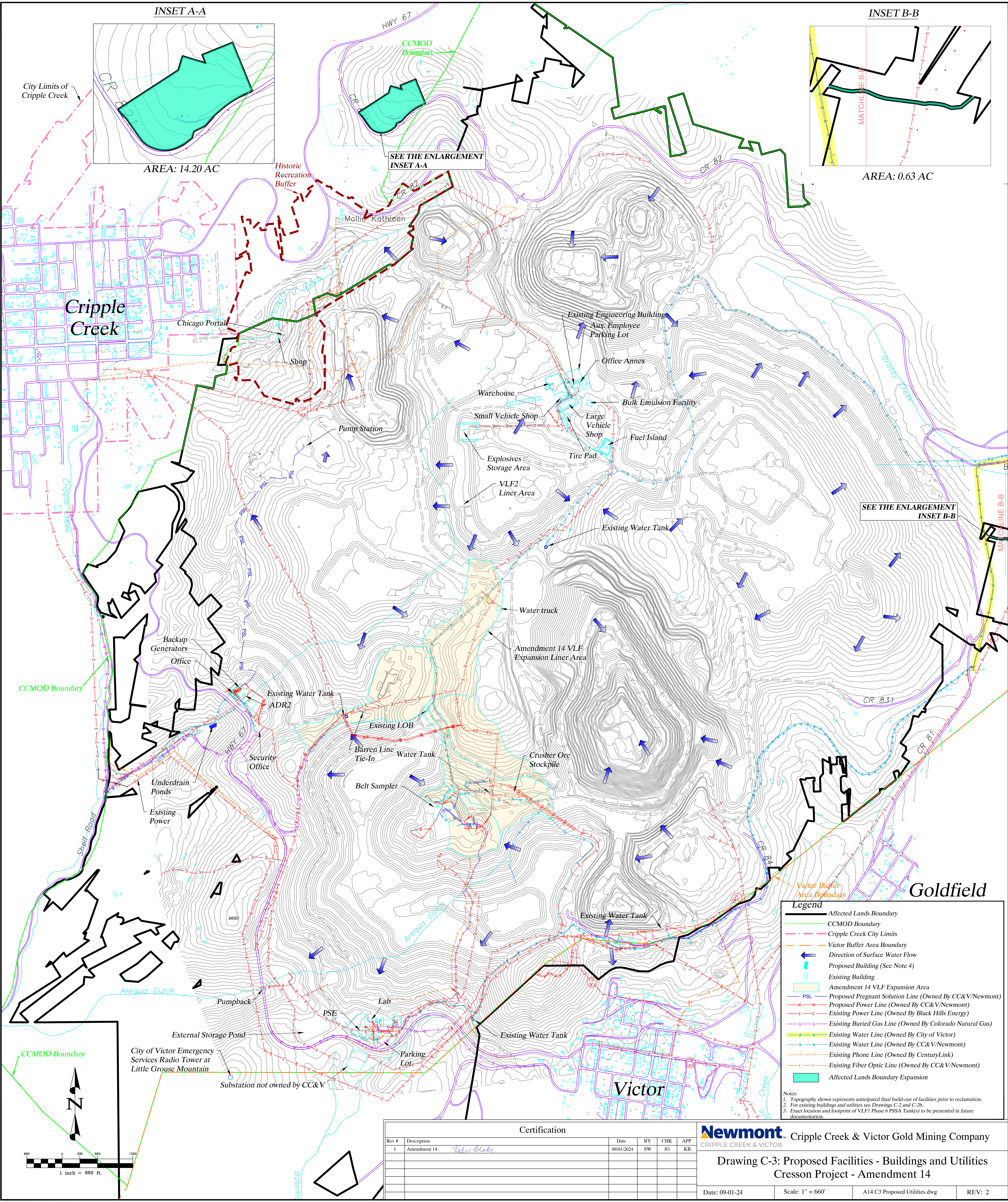
Cresson Project Amendment 14

Exhibit C

Pre-Mining and Mining Plan Maps of Affected Lands

TABLE OF CONTENTS

DRAWING C-3:	PROPOSED FACILITIES BUILDINGS AND UTILITIES
DRAWING C-6:	OWNERS OF RECORD OF AFFECTED LANDS (4 PLATES)



INSET A-A

INSET B-B

AREA: 14.20 AC

AREA: 0.63 AC

SEE THE ENLARGEMENT
INSET A-A

SEE THE ENLARGEMENT
INSET B-B

Legend

- Affected Lands Boundary
- CCMOD Boundary
- Cripple Creek City Limits
- Victor Buffer Area Boundary
- Direction of Surface Water Flow
- Proposed Building (See Note 4)
- Existing Building
- Amendment 14 VLF Expansion Area
- P.S.L. Proposed Pregnant Solution Line (Owned By CC&V/Newmont)
- Proposed Power Line (Owned By CC&V/Newmont)
- Existing Power Line (Owned By Black Hills Energy)
- Existing Buried Gas Line (Owned By Colorado Natural Gas)
- Existing Water Line (Owned By City of Victor)
- Existing Water Line (Owned By CC&V/Newmont)
- Existing Phone Line (Owned By CenturyLink)
- Existing Fiber Optic Line (Owned By CC&V/Newmont)
- Affected Lands Boundary Expansion

Notes:

- Topography shown represents anticipated final build-out of facilities prior to reclamation.
- For existing buildings and utilities see Drawings C-2 and C-2b.
- Exact location and footprint of VLF Phase 6 PSSA Tank(s) to be presented in future documentation.

Certification						
Rev #	Description	Date	BY	CHK	APP	
1	Amendment 14 <i>Kathie Blake</i>	09/01/2024	SW	JG	KB	

Newmont Cripple Creek & Victor Gold Mining Company
CRIPPLE CREEK & VICTOR

**Drawing C-3: Proposed Facilities - Buildings and Utilities
Cresson Project - Amendment 14**

Date: 09-01-24	Scale: 1" = 660'	A14 C3 Proposed Utilities.dwg	REV: 2
----------------	------------------	-------------------------------	--------