

Permit M-1980-244
Cresson Project Amendment 14

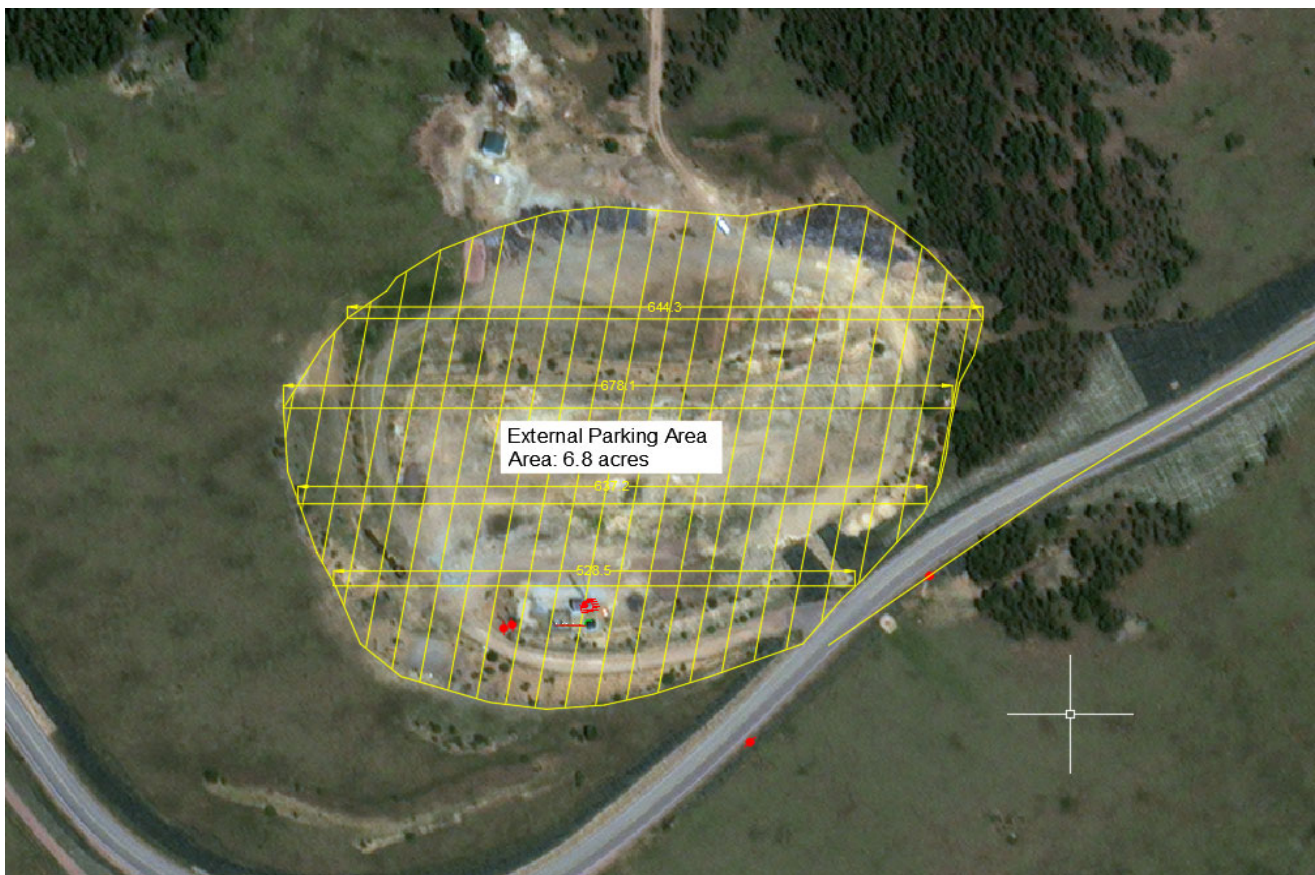
Addendum to Exhibit L
Reclamation Costs

TABLE OF CONTENTS

TABLE 1:	AM14 – EXTERNAL PARKING AREA RECLAMATION COSTS
-----------------	---

Table 1: AM14 - External Parking Area Reclamation			
Task	Unit	Unit Cost	Total Cost
External Parking Area - Topsoil (CY)	5485.0	\$ 3.62	\$ 19,855.00
External Parking Area - Revegetation (Acres)	6.80	\$ 1,578.24	\$ 10,732.00
DRMS Indirect Cost (28.5%)			\$ 8,717.30
Total:			\$ 39,304.30

CC&V has a sufficient surplus of growth medium stockpiled on site for placement on the proposed External Parking Area. The proposed External Parking Area covers 6.8 acres requiring approximately 5,485 CY of growth medium, which can be accounted for from the surplus stockpiled on site.



Date Developed
6/19/2024