

Permit M-1980-244
Cresson Project Amendment 14

Exhibit G
Water Information

TABLE OF CONTENTS

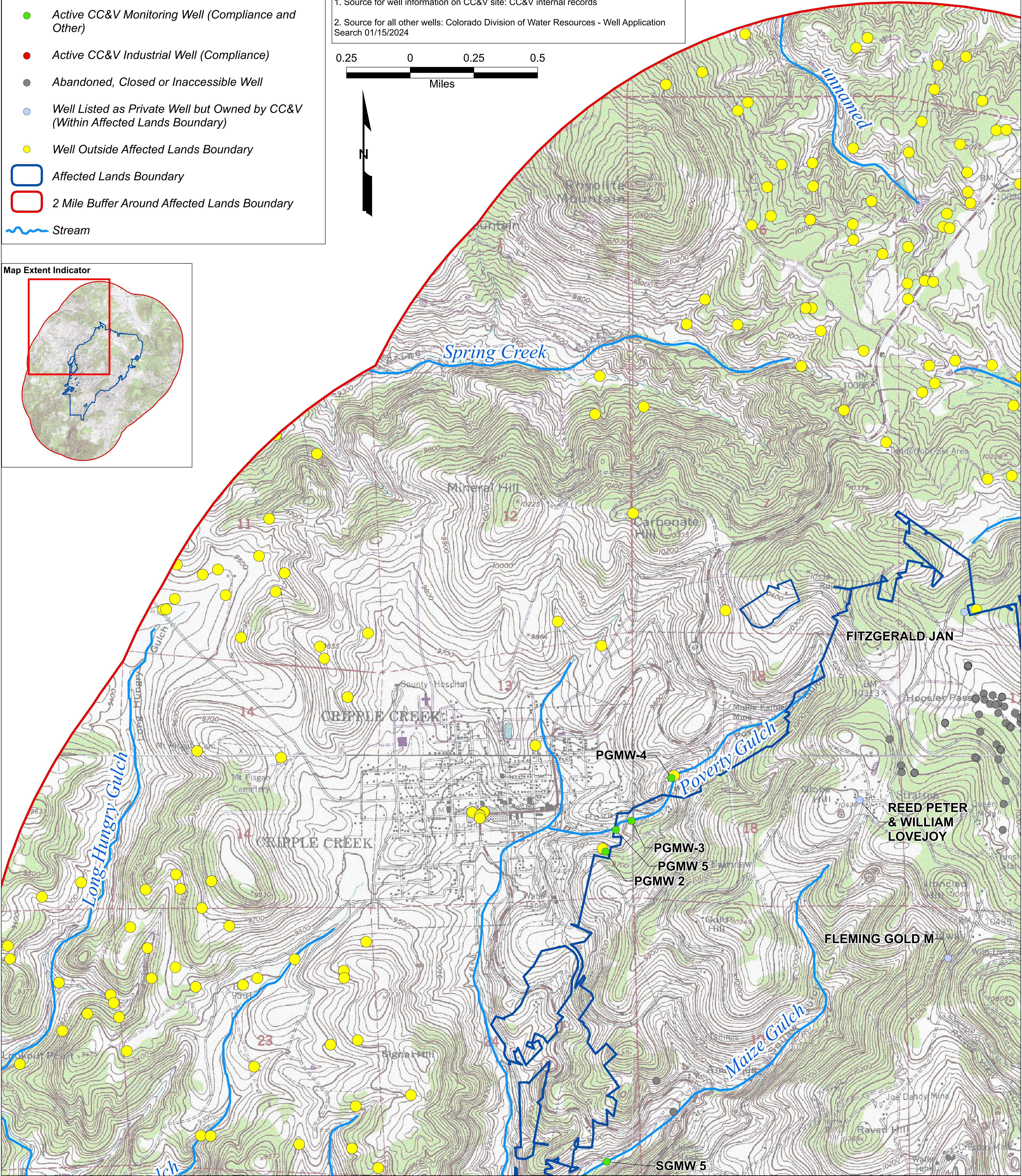
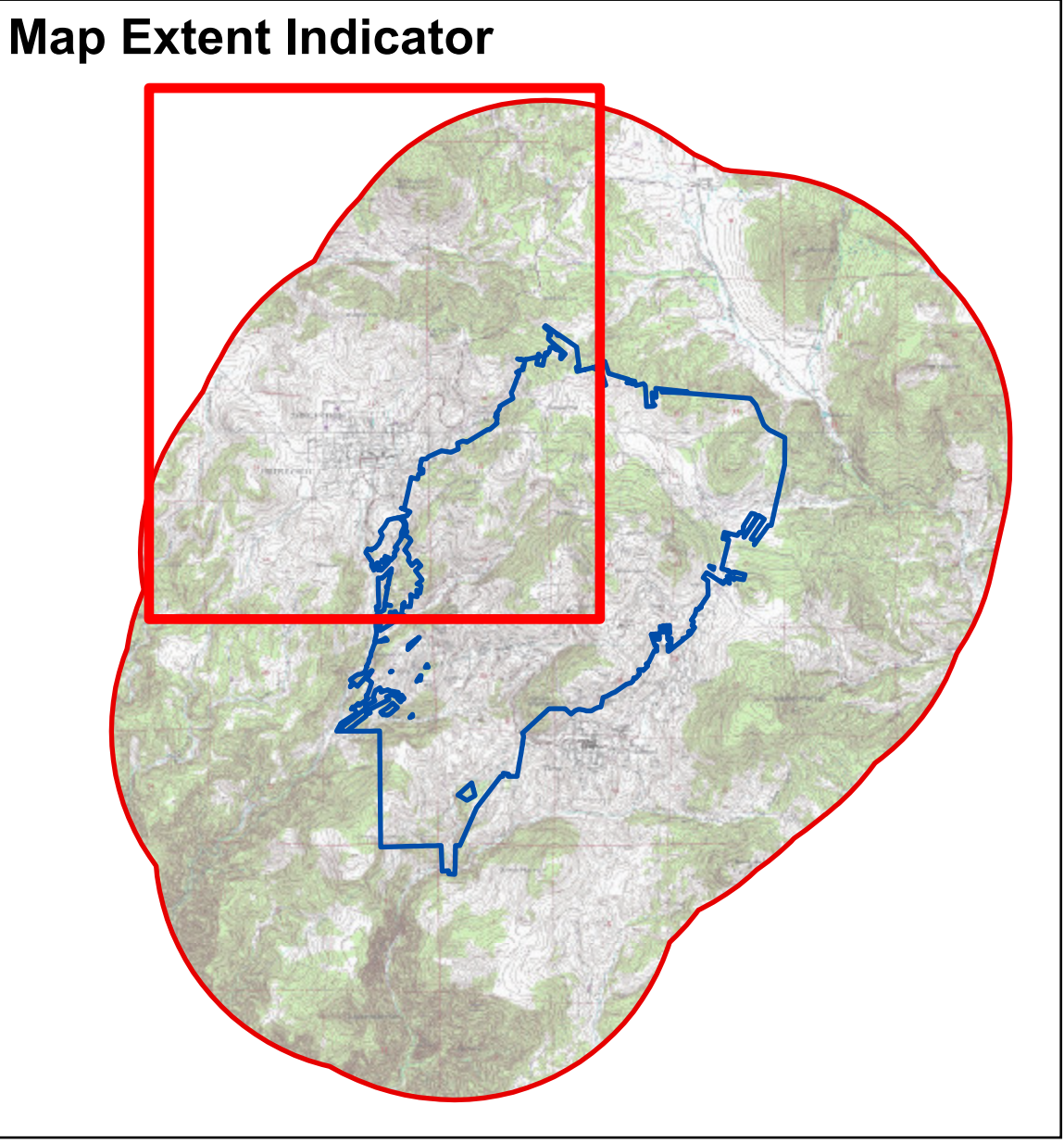
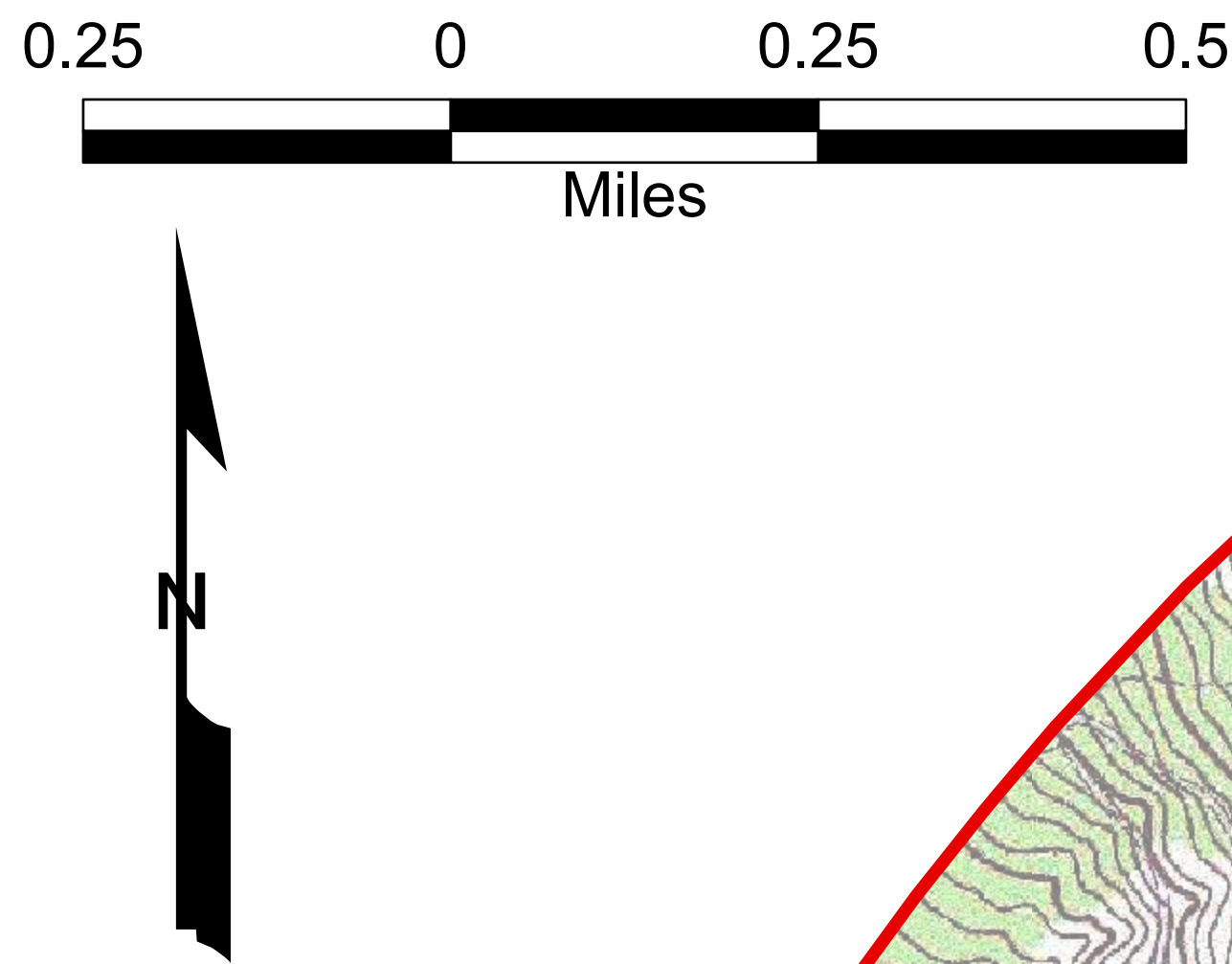
| | |
|---------------------|---|
| DRAWING G-1: | GROUNDWATER WELLS WITHIN 2 MILES OF AFFECTED LANDS BOUNDARY (PLATE 1 OF 4 ONLY) |
| DRAWING G-2: | SURFACE WATER DRAINAGES AND SPRING LOCATIONS WITHIN 2 MILES OF AFFECTED LANDS BOUNDARY (PLATE 1 OF 4 ONLY) |

- Legend**
- Active CC&V Monitoring Well (Compliance and Other)
 - Active CC&V Industrial Well (Compliance)
 - Abandoned, Closed or Inaccessible Well
 - Well Listed as Private Well but Owned by CC&V (Within Affected Lands Boundary)
 - Well Outside Affected Lands Boundary
 - Affected Lands Boundary
 - 2 Mile Buffer Around Affected Lands Boundary
 - ~ Stream

Notes:

1. Source for well information on CC&V site: CC&V internal records

2. Source for all other wells: Colorado Division of Water Resources - Well Application Search 01/15/2024



Certification

| Rev # | Description | Date | BY | CHK | APP |
|-------|--------------------------------|----------|----|-----|-----|
| 1 | AMENDMENT 14 <i>Kate Blake</i> | 7/2/2024 | SW | JG | KB |
| | | | | | |
| | | | | | |
| | | | | | |
| | | | | | |



Cripple Creek & Victor Gold Mining Company

Figure G-1 (Plate 1 of 4)
Groundwater Wells within 2 Miles of Affected Lands Boundary

Date: 7/2/2024

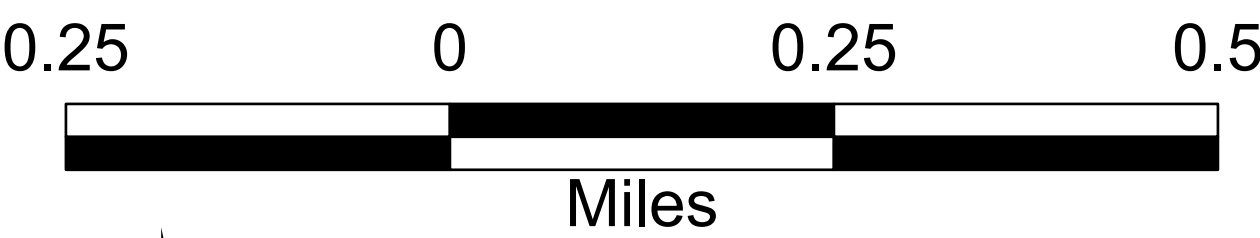
Scale 1 inch = 660 feet

DE0597 Amendment 14

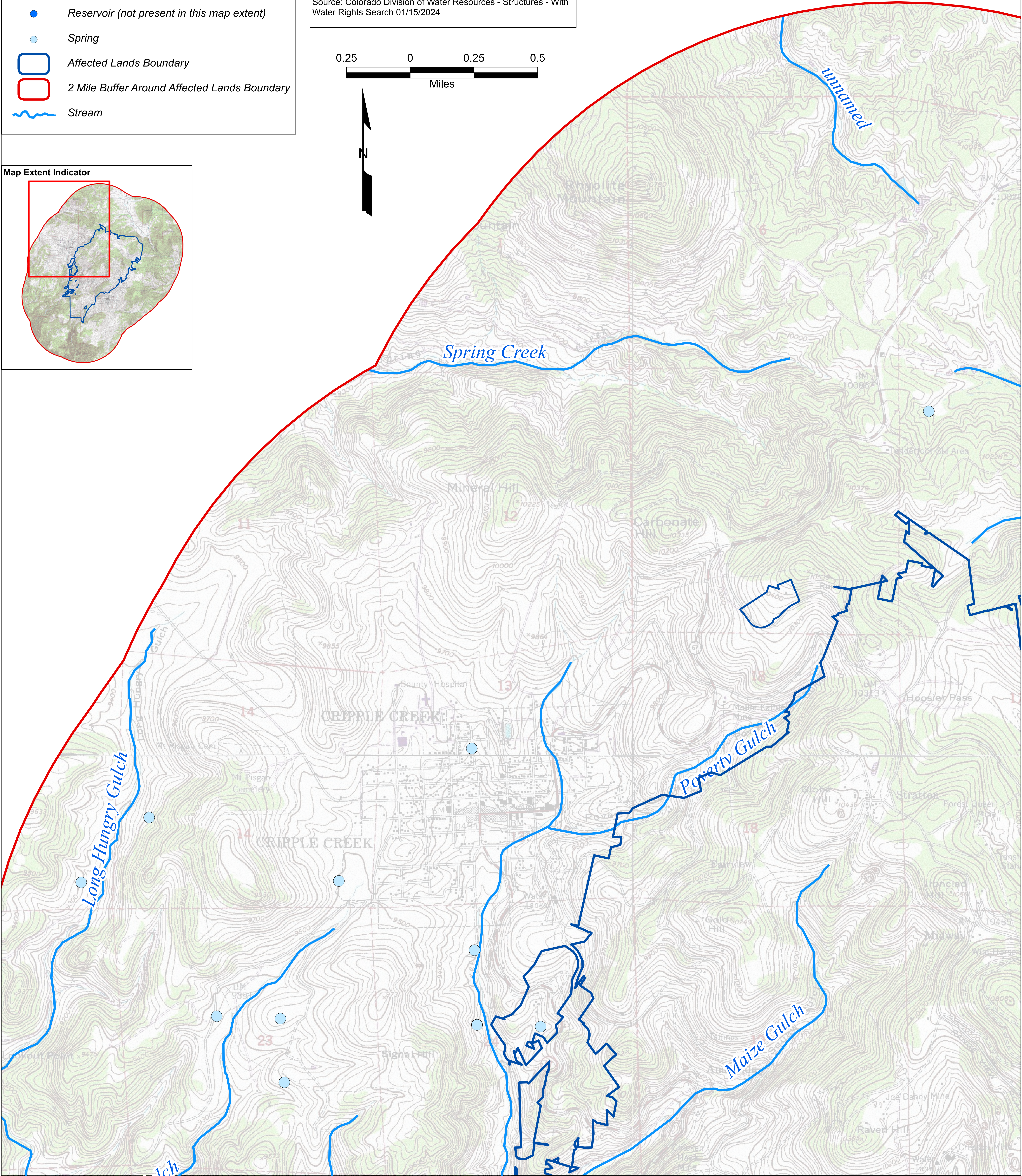
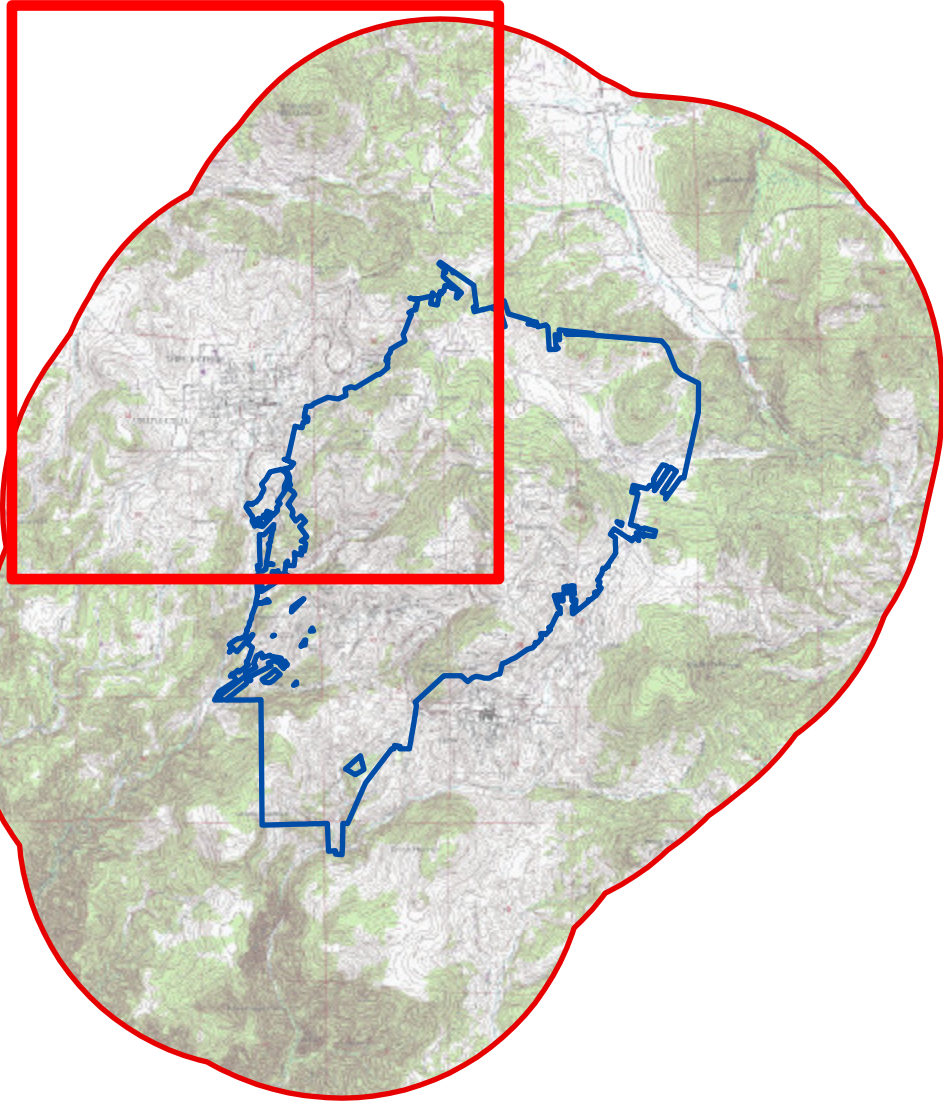
REV: 1

- Legend**
- Reservoir (not present in this map extent)
 - Spring
 - Affected Lands Boundary
 - 2 Mile Buffer Around Affected Lands Boundary
 - ~ Stream

Note:
Source: Colorado Division of Water Resources - Structures - With Water Rights Search 01/15/2024



Map Extent Indicator



Certification

| Rev # | Description | Date | BY | CHK | APP |
|-------|--------------------------------|----------|----|-----|-----|
| 1 | AMENDMENT 14 <i>Kate Blake</i> | 7/2/2024 | SW | JG | KB |
| | | | | | |
| | | | | | |
| | | | | | |
| | | | | | |
| | | | | | |

Newmont Cripple Creek & Victor Gold Mining Company
CRIPPLE CREEK & VICTOR

Figure G-2 (Plate 1 of 4)
Surface Water Drainages within 2 Miles
of Affected Lands Boundary

| | | | |
|----------------|-------------------------|---------------------|--------|
| Date: 7/2/2024 | Scale 1 inch = 660 feet | DE0597 Amendment 14 | REV: 1 |
|----------------|-------------------------|---------------------|--------|