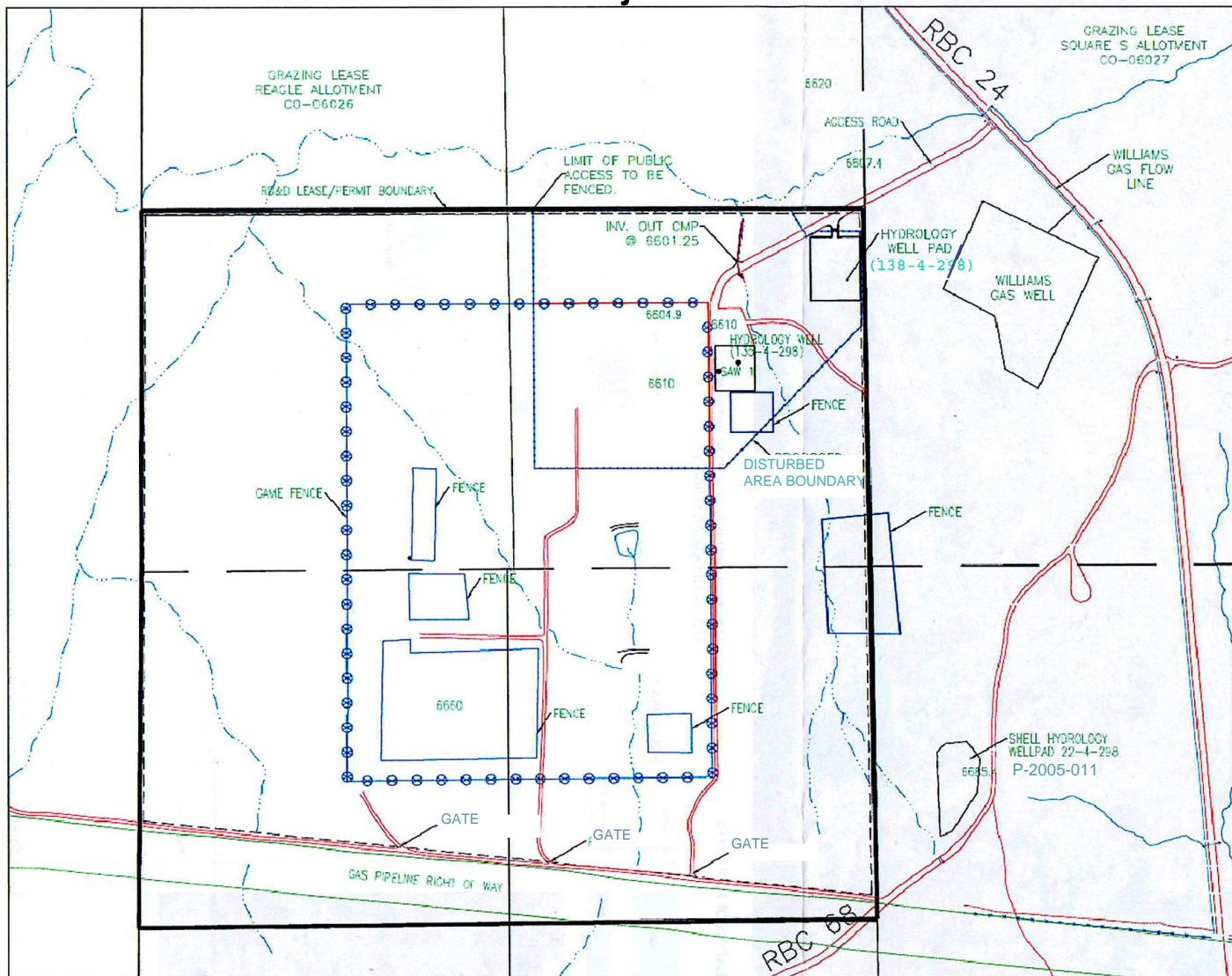


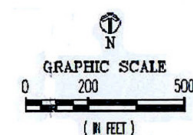
East RDD Pilot Project - Disturbed Area Boundaries



PERMIT BOUNDARY:
SECTION 4, LOTS 9, 10, 15, AND 16,
T2 S, R98 W, 6th P.M.

OIL AND GAS RIGHTS LEASED TO
WILLIAMS OIL AND GAS COMPANY

SURFACE AND SUBSURFACE
OWNED/MANAGED BY US GOVT/BUREAU
OF LAND MANAGEMENT

[illegible]

