

## J&T Consulting, Inc.

August 29, 2024

Ms. Nikie Gagnon  
Environmental Protection Specialist  
State of Colorado  
Division of Reclamation, Mining, & Safety  
1313 Sherman Street – Room 215  
Denver, CO 80203

*RE: File No. M-2008-017 Derr Pit – Summary for July Water Level Reporting*

Dear Ms. Gagnon,

We are submitting this letter and summary for the July Water Level Reporting on behalf of W.W. Clyde & Co.

We are providing this summary letter to discuss and provide information in regard to the August off-site an on-site monitor wells and provide the dewatering volumes pumped for June.

During the month of July a total of 0.0 acre-feet was pumped and discharged into the on-site recharge ponds within the Derr Pit.

AgPro was able to get all the normal monthly readings/measurements on all of the off-site wells for the August readings except for the Bliss and Hoffner #2 wells as they were operating and in service. The on-site monitor wells saw decreases in the elevation of the water levels. The water level elevations in the monitor wells on the Phase 1-4 portion of the pit went down on the south side by 1.42 feet and down by 0.28 feet on the north side. The water level elevations in the monitor wells on the upper terrace of the permit area decreased by 1.11 feet for MW-14, decreased by 0.76 feet for MW-15, decreased by 1.03 feet for MW-16, decreased 0.82 feet for MW-17, and decreased by 0.64 feet for MW-18.

Please let us know if you have any questions or concerns.

Sincerely,

J.C. York, P.E.  
**J&T Consulting, Inc.**



Derr Pit Monitor Well Readings

Well Designation	MW-1			MW-2		
Top of Well (ft)	4631.38			4630.91		
Ground Elevation (ft)	4629.09			4629.78		
Date	Depth to Groundwater from Top of Well (ft)	Depth to Groundwater from Ground (ft)	Elevation of Groundwater (ft)	Depth to Groundwater from Top of Well (ft)	Depth to Groundwater from Ground (ft)	Elevation of Groundwater (ft)
September 26, 2018	16.73	14.44	4614.65	17.18	16.05	4613.73
October 26, 2018	17.06	14.77	4614.32	17.06	15.93	4613.85
November 20, 2018	17.14	14.85	4614.24	17.03	15.90	4613.88
December 18, 2018	17.38	15.09	4614.00	17.03	15.90	4613.88
January 17, 2019	17.72	15.43	4613.66	17.56	16.43	4613.35
February 12, 2019	18.10	15.81	4613.28	17.95	16.82	4612.96
March 7, 2019	18.30	16.01	4613.08	18.19	17.06	4612.72
April 22, 2019	27.66	25.37	4603.72	19.06	17.93	4611.85
May 14, 2019	22.31	20.02	4609.07	28.70	27.57	4602.21
June 21, 2019	14.60	12.31	4616.78	20.28	19.15	4610.63
July 24, 2019	16.41	14.12	4614.97	20.75	19.62	4610.16
August 21, 2019	17.99	15.70	4613.39	21.11	19.98	4609.80
September 17, 2019	not read	#VALUE!	#VALUE!	22.56	21.43	4608.35
October 17, 2019	18.50	16.21	4612.88	22.18	21.05	4608.73
November 13, 2019	18.46	16.17	4612.92	23.31	22.18	4607.60
December 10, 2019	not read	#VALUE!	#VALUE!	23.30	22.17	4607.61
January 9, 2020	not read	#VALUE!	#VALUE!	23.53	22.40	4607.38
February 12, 2020	not read	#VALUE!	#VALUE!	25.04	23.91	4605.87
March 12, 2020	not read	#VALUE!	#VALUE!	21.48	20.35	4609.43
April 9, 2020	not read	#VALUE!	#VALUE!	19.75	18.62	4611.16
May 14, 2020	not read	#VALUE!	#VALUE!	19.55	18.42	4611.36
June 11, 2020	not read	#VALUE!	#VALUE!	19.81	18.68	4611.10
July 9, 2020	not read	#VALUE!	#VALUE!	19.08	17.95	4611.83
August 13, 2020	not read	#VALUE!	#VALUE!	22.17	21.04	4608.74
September 10, 2020	not read	#VALUE!	#VALUE!	19.86	18.73	4611.05
October 8, 2020	not read	#VALUE!	#VALUE!	19.99	18.86	4610.92
November 12, 2020	not read	#VALUE!	#VALUE!	24.65	23.52	4606.26
December 10, 2020	not read	#VALUE!	#VALUE!	not read	#VALUE!	#VALUE!
January 14, 2021	not read	#VALUE!	#VALUE!	not read	#VALUE!	#VALUE!
February 12, 2021	not read	#VALUE!	#VALUE!	not read	#VALUE!	#VALUE!
March 11, 2021	not read	#VALUE!	#VALUE!	not read	#VALUE!	#VALUE!
April 8, 2021	not read	#VALUE!	#VALUE!	not read	#VALUE!	#VALUE!
May 13, 2021	not read	#VALUE!	#VALUE!	not read	#VALUE!	#VALUE!
June 10, 2021	17.05	14.76	4614.33	not read	#VALUE!	#VALUE!
July 8, 2021	17.70	15.41	4613.68	not read	#VALUE!	#VALUE!
August 12, 2021	18.16	16.87	4612.22	not read	#VALUE!	#VALUE!
September 9, 2021	18.45	17.16	4611.53	not read	#VALUE!	#VALUE!
October 14, 2021	20.50	18.21	4610.88	not read	#VALUE!	#VALUE!
November 12, 2021	20.00	17.71	4611.38	not read	#VALUE!	#VALUE!
December 9, 2021	20.12	17.83	4611.26	not read	#VALUE!	#VALUE!
January 13, 2022	not read	#VALUE!	#VALUE!	not read	#VALUE!	#VALUE!
February 9, 2022	20.11	17.82	4611.27	not read	#VALUE!	#VALUE!
March 11, 2022	not read	#VALUE!	#VALUE!	not read	#VALUE!	#VALUE!
April 14, 2022	not read	#VALUE!	#VALUE!	not read	#VALUE!	#VALUE!
May 17, 2022	not read	#VALUE!	#VALUE!	not read	#VALUE!	#VALUE!
June 9, 2022	not read	#VALUE!	#VALUE!	not read	#VALUE!	#VALUE!
July 14, 2022	not read	#VALUE!	#VALUE!	not read	#VALUE!	#VALUE!
August 11, 2022	not read	#VALUE!	#VALUE!	not read	#VALUE!	#VALUE!
September 8, 2022	not read	#VALUE!	#VALUE!	not read	#VALUE!	#VALUE!
October 11, 2022	not read	#VALUE!	#VALUE!	not read	#VALUE!	#VALUE!
November 10, 2022	not read	#VALUE!	#VALUE!	not read	#VALUE!	#VALUE!
December 8, 2022	not read	#VALUE!	#VALUE!	not read	#VALUE!	#VALUE!
January 12, 2023	not read	#VALUE!	#VALUE!	not read	#VALUE!	#VALUE!
February 9, 2023	not read	#VALUE!	#VALUE!	not read	#VALUE!	#VALUE!
March 9, 2023	not read	#VALUE!	#VALUE!	not read	#VALUE!	#VALUE!
April 25, 2023	not read	#VALUE!	#VALUE!	not read	#VALUE!	#VALUE!
May 11, 2023	not read	#VALUE!	#VALUE!	not read	#VALUE!	#VALUE!
June 8, 2023	not read	#VALUE!	#VALUE!	not read	#VALUE!	#VALUE!
July 13, 2023	not read	#VALUE!	#VALUE!	not read	#VALUE!	#VALUE!
August 10, 2023	not read	#VALUE!	#VALUE!	not read	#VALUE!	#VALUE!
September 14, 2023	not read	#VALUE!	#VALUE!	not read	#VALUE!	#VALUE!
October 12, 2023	not read	#VALUE!	#VALUE!	not read	#VALUE!	#VALUE!
November 9, 2023	not read	#VALUE!	#VALUE!	not read	#VALUE!	#VALUE!
December 14, 2023	not read	#VALUE!	#VALUE!	not read	#VALUE!	#VALUE!
January 19, 2024	not read	#VALUE!	#VALUE!	not read	#VALUE!	#VALUE!
February 8, 2024	not read	#VALUE!	#VALUE!	not read	#VALUE!	#VALUE!
March 22, 2024	not read	#VALUE!	#VALUE!	not read	#VALUE!	#VALUE!
April 18, 2024	not read	#VALUE!	#VALUE!	not read	#VALUE!	#VALUE!
May 9, 2024	not read	#VALUE!	#VALUE!	not read	#VALUE!	#VALUE!
June 11, 2024	not read	#VALUE!	#VALUE!	not read	#VALUE!	#VALUE!
July 16, 2024	not read	#VALUE!	#VALUE!	not read	#VALUE!	#VALUE!
August 15, 2024	not read	#VALUE!	#VALUE!	not read	#VALUE!	#VALUE!

Derr Pit Monitor Well Readings

Well Designation	MW-3			MW-4			MW-6		
Top of Well (ft)	4631.38			4631.63			4633.36		
Ground Elevation (ft)	4629.04			4629.27			4631.13		
Date	Depth to Groundwater from Top of Well (ft)	Depth to Groundwater from Ground (ft)	Elevation of Groundwater (ft)	Depth to Groundwater from Top of Well (ft)	Depth to Groundwater from Ground (ft)	Elevation of Groundwater (ft)	Depth to Groundwater from Top of Well (ft)	Depth to Groundwater from Ground (ft)	Elevation of Groundwater (ft)
September 26, 2018	17.87	15.53	4613.51	15.73	13.37	4615.90	15.31	13.08	4618.05
October 26, 2018	17.67	15.33	4613.71	15.38	13.02	4616.25	14.89	12.66	4618.47
November 20, 2018	17.63	15.29	4613.75	15.34	12.98	4616.29	14.78	12.55	4618.58
December 18, 2018	17.63	15.29	4613.75	15.34	12.98	4616.29	14.78	12.55	4618.58
January 17, 2019	18.16	15.82	4613.22	15.74	13.38	4615.89	15.13	12.90	4618.23
February 12, 2019	18.58	16.24	4612.80	16.11	13.75	4615.52	15.49	13.26	4617.87
March 7, 2019	18.79	16.45	4612.59	25.46	23.10	4606.17	15.74	13.51	4617.62
April 22, 2019	19.46	17.12	4611.92	17.02	14.66	4614.61	16.34	14.11	4617.02
May 14, 2019	20.22	17.88	4611.16	18.63	16.27	4613.00	17.63	15.40	4615.73
June 21, 2019	20.65	18.31	4610.73	20.40	18.04	4611.23	18.55	16.32	4614.81
July 24, 2019	20.92	18.58	4610.46	20.49	18.13	4611.14	18.61	16.38	4614.75
August 21, 2019	21.28	18.94	4610.10	20.63	18.27	4611.00	18.95	16.72	4614.41
September 17, 2019	22.57	20.23	4608.81	22.74	20.38	4608.89	19.54	17.31	4613.82
October 17, 2019	22.36	20.02	4609.02	22.27	19.91	4609.36	20.00	17.77	4613.36
November 13, 2019	23.28	20.94	4608.10	23.18	20.82	4608.45	20.30	18.07	4613.06
December 10, 2019	23.32	20.98	4608.06	23.07	20.71	4608.56	20.28	18.05	4613.08
January 9, 2020	23.63	21.29	4607.75	23.25	20.89	4608.38	20.48	18.25	4612.88
February 12, 2020	25.82	23.48	4605.56	25.90	23.54	4605.73	21.77	19.54	4611.59
March 12, 2020	22.30	19.96	4609.08	21.05	18.69	4610.58	19.72	17.49	4613.64
April 9, 2020	20.65	18.31	4610.73	19.32	16.96	4612.31	18.00	15.77	4615.36
May 14, 2020	20.40	18.06	4610.98	19.03	16.67	4612.60	17.72	15.49	4615.64
June 11, 2020	20.41	18.07	4610.97	19.28	16.92	4612.35	17.52	15.29	4615.84
July 9, 2020	19.84	17.50	4611.54	not read	#VALUE!	#VALUE!	17.23	15.00	4616.13
August 13, 2020	21.03	18.69	4610.35	not read	#VALUE!	#VALUE!	18.62	16.39	4614.74
September 10, 2020	20.43	18.09	4610.95	not read	#VALUE!	#VALUE!	17.95	15.72	4615.41
October 8, 2020	20.39	18.05	4610.99	not read	#VALUE!	#VALUE!	17.54	15.31	4615.82
November 12, 2020	23.15	20.81	4608.23	not read	#VALUE!	#VALUE!	18.26	16.03	4615.10
December 10, 2020	23.77	21.43	4607.61	not read	#VALUE!	#VALUE!	not read	#VALUE!	#VALUE!
January 14, 2021	23.72	21.38	4607.66	not read	#VALUE!	#VALUE!	not read	#VALUE!	#VALUE!
February 12, 2021	24.02	21.68	4607.36	not read	#VALUE!	#VALUE!	not read	#VALUE!	#VALUE!
March 11, 2021	22.42	20.08	4608.96	not read	#VALUE!	#VALUE!	not read	#VALUE!	#VALUE!
April 8, 2021	22.90	20.56	4608.48	not read	#VALUE!	#VALUE!	not read	#VALUE!	#VALUE!
May 13, 2021	22.00	19.66	4609.38	not read	#VALUE!	#VALUE!	not read	#VALUE!	#VALUE!
June 10, 2021	20.30	17.96	4611.08	not read	#VALUE!	#VALUE!	not read	#VALUE!	#VALUE!
July 8, 2021	21.00	18.66	4610.38	not read	#VALUE!	#VALUE!	not read	#VALUE!	#VALUE!
August 12, 2021	20.68	18.34	4610.70	not read	#VALUE!	#VALUE!	not read	#VALUE!	#VALUE!
September 9, 2021	22.71	20.37	4608.67	not read	#VALUE!	#VALUE!	not read	#VALUE!	#VALUE!
October 14, 2021	23.00	20.66	4608.38	not read	#VALUE!	#VALUE!	not read	#VALUE!	#VALUE!
November 12, 2021	22.85	20.51	4608.53	not read	#VALUE!	#VALUE!	not read	#VALUE!	#VALUE!
December 9, 2021	23.13	20.79	4608.25	not read	#VALUE!	#VALUE!	not read	#VALUE!	#VALUE!
January 13, 2022	23.22	20.88	4608.16	not read	#VALUE!	#VALUE!	not read	#VALUE!	#VALUE!
February 9, 2022	23.59	21.25	4607.79	not read	#VALUE!	#VALUE!	not read	#VALUE!	#VALUE!
March 11, 2022	23.60	21.26	4607.78	not read	#VALUE!	#VALUE!	not read	#VALUE!	#VALUE!
April 14, 2022	23.95	21.61	4607.43	not read	#VALUE!	#VALUE!	not read	#VALUE!	#VALUE!
May 17, 2022	22.28	19.94	4609.10	not read	#VALUE!	#VALUE!	not read	#VALUE!	#VALUE!
June 9, 2022	21.71	19.37	4609.67	not read	#VALUE!	#VALUE!	not read	#VALUE!	#VALUE!
July 14, 2022	22.18	19.84	4609.20	not read	#VALUE!	#VALUE!	not read	#VALUE!	#VALUE!
August 11, 2022	21.71	19.37	4609.67	not read	#VALUE!	#VALUE!	not read	#VALUE!	#VALUE!
September 8, 2022	22.41	20.07	4608.97	not read	#VALUE!	#VALUE!	not read	#VALUE!	#VALUE!
October 11, 2022	22.25	19.91	4609.13	not read	#VALUE!	#VALUE!	not read	#VALUE!	#VALUE!
November 10, 2022	22.65	20.31	4608.73	not read	#VALUE!	#VALUE!	not read	#VALUE!	#VALUE!
December 8, 2022	22.54	20.20	4608.84	not read	#VALUE!	#VALUE!	not read	#VALUE!	#VALUE!
January 12, 2023	23.39	21.05	4607.99	not read	#VALUE!	#VALUE!	not read	#VALUE!	#VALUE!
February 9, 2023	23.75	21.41	4607.63	not read	#VALUE!	#VALUE!	not read	#VALUE!	#VALUE!
March 9, 2023	24.05	21.71	4607.33	not read	#VALUE!	#VALUE!	not read	#VALUE!	#VALUE!
April 25, 2023	24.31	21.97	4607.07	not read	#VALUE!	#VALUE!	not read	#VALUE!	#VALUE!
May 11, 2023	22.61	20.27	4608.77	not read	#VALUE!	#VALUE!	not read	#VALUE!	#VALUE!
June 8, 2023	21.70	19.36	4609.68	not read	#VALUE!	#VALUE!	not read	#VALUE!	#VALUE!
July 13, 2023	19.55	17.21	4611.83	not read	#VALUE!	#VALUE!	not read	#VALUE!	#VALUE!
August 10, 2023	18.86	16.52	4612.52	not read	#VALUE!	#VALUE!	not read	#VALUE!	#VALUE!
September 14, 2023	20.30	17.96	4611.08	not read	#VALUE!	#VALUE!	not read	#VALUE!	#VALUE!
October 12, 2023	20.71	18.37	4610.67	not read	#VALUE!	#VALUE!	not read	#VALUE!	#VALUE!
November 9, 2023	21.06	18.72	4610.32	not read	#VALUE!	#VALUE!	not read	#VALUE!	#VALUE!
December 14, 2023	21.83	19.49	4609.55	not read	#VALUE!	#VALUE!	not read	#VALUE!	#VALUE!
January 19, 2024	24.05	21.71	4607.33	not read	#VALUE!	#VALUE!	not read	#VALUE!	#VALUE!
February 8, 2024	22.72	20.38	4608.66	not read	#VALUE!	#VALUE!	not read	#VALUE!	#VALUE!
March 22, 2024	23.19	20.85	4608.19	not read	#VALUE!	#VALUE!	not read	#VALUE!	#VALUE!
April 18, 2024	22.81	20.47	4608.57	not read	#VALUE!	#VALUE!	not read	#VALUE!	#VALUE!
May 9, 2024	21.67	19.33	4609.71	not read	#VALUE!	#VALUE!	not read	#VALUE!	#VALUE!
June 11, 2024	20.11	17.77	4611.27	not read	#VALUE!	#VALUE!	not read	#VALUE!	#VALUE!
July 16, 2024	20.66	18.32	4610.72	not read	#VALUE!	#VALUE!	not read	#VALUE!	#VALUE!
August 15, 2024	22.08	19.74	4609.30	not read	#VALUE!	#VALUE!	not read	#VALUE!	#VALUE!

Derr Pit Monitor Well Readings

Well Designation	MW-7			MW-8			MW-9		
Top of Well (ft)	4635.60			4635.24			4634.02		
Ground Elevation (ft)	4633.04			4632.76			4631.72		
Date	Depth to Groundwater from Top of Well (ft)	Depth to Groundwater from Ground (ft)	Elevation of Groundwater (ft)	Depth to Groundwater from Top of Well (ft)	Depth to Groundwater from Ground (ft)	Elevation of Groundwater (ft)	Depth to Groundwater from Top of Well (ft)	Depth to Groundwater from Ground (ft)	Elevation of Groundwater (ft)
September 26, 2018	not read	#VALUE!	#VALUE!	18.07	15.59	4617.17	15.74	13.44	4618.28
October 26, 2018	16.57	14.01	4619.03	17.79	15.31	4617.45	15.32	13.02	4618.70
November 20, 2018	16.43	13.87	4619.17	17.71	15.23	4617.53	15.21	12.91	4618.81
December 18, 2018	16.43	13.87	4619.17	17.71	15.23	4617.53	15.21	12.91	4618.81
January 17, 2019	16.75	14.19	4618.85	18.09	15.61	4617.15	15.56	13.26	4618.46
February 12, 2019	17.11	14.55	4618.49	18.44	15.96	4616.80	15.92	13.62	4618.10
March 7, 2019	17.34	14.78	4618.26	18.65	16.17	4616.59	16.13	13.83	4617.89
April 22, 2019	17.91	15.35	4617.69	19.27	16.79	4615.97	16.75	14.45	4617.27
May 14, 2019	18.71	16.15	4616.89	19.91	17.43	4615.33	25.56	23.26	4608.46
June 21, 2019	19.42	16.86	4616.18	20.73	18.25	4614.51	18.53	16.23	4615.49
July 24, 2019	19.42	16.86	4616.18	20.90	18.42	4614.34	18.77	16.47	4615.25
August 21, 2019	19.85	17.29	4615.75	21.41	18.93	4613.83	19.16	16.86	4614.86
September 17, 2019	20.38	17.82	4615.22	22.27	19.79	4612.97	19.75	17.45	4614.27
October 17, 2019	20.71	18.15	4614.89	22.51	20.03	4612.73	19.96	17.66	4614.06
November 13, 2019	21.05	18.49	4614.55	23.01	20.53	4612.23	20.28	17.98	4613.74
December 10, 2019	21.01	18.45	4614.59	22.97	20.49	4612.27	20.26	17.96	4613.76
January 9, 2020	21.23	18.67	4614.37	23.21	20.73	4612.03	20.50	18.20	4613.52
February 12, 2020	22.31	19.75	4613.29	24.46	21.98	4610.78	21.70	19.40	4612.32
March 12, 2020	20.67	18.11	4614.93	22.20	19.72	4613.04	19.75	17.45	4614.27
April 9, 2020	19.53	16.97	4616.07	20.78	18.30	4614.46	18.41	16.11	4615.61
May 14, 2020	19.12	16.56	4616.48	20.43	17.95	4614.81	18.02	15.72	4616.00
June 11, 2020	18.82	16.26	4616.78	20.29	17.81	4614.95	17.79	15.49	4616.23
July 9, 2020	18.54	15.98	4617.06	19.88	17.40	4615.36	17.56	15.26	4616.46
August 13, 2020	20.16	17.60	4615.44	21.99	19.51	4613.25	19.16	16.86	4614.86
September 10, 2020	19.30	16.74	4616.30	20.58	18.10	4614.66	18.29	15.99	4615.73
October 8, 2020	18.95	16.39	4616.65	20.30	17.82	4614.94	Broken not read	#VALUE!	#VALUE!
November 12, 2020	19.80	17.24	4615.80	21.52	19.04	4613.72	Broken not read	#VALUE!	#VALUE!
December 10, 2020	19.43	16.87	4616.17	not read	#VALUE!	#VALUE!	Broken not read	#VALUE!	#VALUE!
January 14, 2021	20.47	17.91	not read	#VALUE!	#VALUE!	#VALUE!	Broken not read	#VALUE!	#VALUE!
February 12, 2021	22.06	19.50	4613.54	not read	#VALUE!	#VALUE!	Broken not read	#VALUE!	#VALUE!
March 11, 2021	23.51	20.95	4612.09	not read	#VALUE!	#VALUE!	Broken not read	#VALUE!	#VALUE!
April 8, 2021	24.06	21.50	4611.54	not read	#VALUE!	#VALUE!	Broken not read	#VALUE!	#VALUE!
May 13, 2021	23.79	21.23	4611.81	not read	#VALUE!	#VALUE!	Broken not read	#VALUE!	#VALUE!
June 10, 2021	23.86	21.30	4611.74	not read	#VALUE!	#VALUE!	Broken not read	#VALUE!	#VALUE!
July 8, 2021	22.85	20.29	4612.75	not read	#VALUE!	#VALUE!	Broken not read	#VALUE!	#VALUE!
August 12, 2021	23.40	20.84	4612.20	not read	#VALUE!	#VALUE!	Broken not read	#VALUE!	#VALUE!
September 9, 2021	16.19	13.63	4619.41	not read	#VALUE!	#VALUE!	Broken not read	#VALUE!	#VALUE!
October 14, 2021	15.10	12.54	4620.50	not read	#VALUE!	#VALUE!	Broken not read	#VALUE!	#VALUE!
November 12, 2021	14.70	12.14	4620.90	not read	#VALUE!	#VALUE!	Broken not read	#VALUE!	#VALUE!
December 9, 2021	14.47	11.91	4621.13	not read	#VALUE!	#VALUE!	Broken not read	#VALUE!	#VALUE!
January 13, 2022	14.47	11.91	4621.13	not read	#VALUE!	#VALUE!	Broken not read	#VALUE!	#VALUE!
February 9, 2022	14.65	12.09	4620.95	not read	#VALUE!	#VALUE!	Broken not read	#VALUE!	#VALUE!
March 11, 2022	14.72	12.16	4620.88	not read	#VALUE!	#VALUE!	Broken not read	#VALUE!	#VALUE!
April 14, 2022	15.00	12.44	4620.60	not read	#VALUE!	#VALUE!	Broken not read	#VALUE!	#VALUE!
May 17, 2022	15.25	12.69	4620.35	not read	#VALUE!	#VALUE!	Broken not read	#VALUE!	#VALUE!
June 9, 2022	14.91	12.35	4620.69	not read	#VALUE!	#VALUE!	Broken not read	#VALUE!	#VALUE!
July 14, 2022	14.85	12.29	4620.75	not read	#VALUE!	#VALUE!	Broken not read	#VALUE!	#VALUE!
August 11, 2022	15.40	12.84	4620.20	not read	#VALUE!	#VALUE!	Broken not read	#VALUE!	#VALUE!
September 8, 2022	15.31	12.75	4620.29	not read	#VALUE!	#VALUE!	Broken not read	#VALUE!	#VALUE!
October 11, 2022	14.59	12.03	4621.01	not read	#VALUE!	#VALUE!	Broken not read	#VALUE!	#VALUE!
November 10, 2022	14.38	11.82	4621.22	not read	#VALUE!	#VALUE!	Broken not read	#VALUE!	#VALUE!
December 8, 2022	14.30	11.74	4621.30	not read	#VALUE!	#VALUE!	Broken not read	#VALUE!	#VALUE!
January 12, 2023	14.67	12.11	4620.93	not read	#VALUE!	#VALUE!	Broken not read	#VALUE!	#VALUE!
February 9, 2023	14.95	12.30	4620.65	not read	#VALUE!	#VALUE!	Broken not read	#VALUE!	#VALUE!
March 9, 2023	15.15	12.59	4620.45	not read	#VALUE!	#VALUE!	Broken not read	#VALUE!	#VALUE!
April 25, 2023	16.60	14.04	4619.00	not read	#VALUE!	#VALUE!	Broken not read	#VALUE!	#VALUE!
May 11, 2023	15.72	13.16	4619.88	not read	#VALUE!	#VALUE!	Broken not read	#VALUE!	#VALUE!
June 8, 2023	14.98	12.42	4620.62	not read	#VALUE!	#VALUE!	Broken not read	#VALUE!	#VALUE!
July 13, 2023	13.42	10.86	4622.18	not read	#VALUE!	#VALUE!	Broken not read	#VALUE!	#VALUE!
August 10, 2023	13.49	10.93	4622.11	not read	#VALUE!	#VALUE!	Broken not read	#VALUE!	#VALUE!
September 14, 2023	13.64	11.08	4621.96	not read	#VALUE!	#VALUE!	Broken not read	#VALUE!	#VALUE!
October 12, 2023	13.26	10.70	4622.34	not read	#VALUE!	#VALUE!	Broken not read	#VALUE!	#VALUE!
November 9, 2023	13.00	10.44	4622.60	not read	#VALUE!	#VALUE!	Broken not read	#VALUE!	#VALUE!
December 14, 2023	13.13	10.57	4622.47	not read	#VALUE!	#VALUE!	Broken not read	#VALUE!	#VALUE!
January 19, 2024	15.15	12.59	4620.45	not read	#VALUE!	#VALUE!	Broken not read	#VALUE!	#VALUE!
February 8, 2024	13.60	11.04	4622.00	not read	#VALUE!	#VALUE!	Broken not read	#VALUE!	#VALUE!
March 22, 2024	14.12	11.56	4621.48	not read	#VALUE!	#VALUE!	Broken not read	#VALUE!	#VALUE!
April 18, 2024	14.61	12.05	4620.99	not read	#VALUE!	#VALUE!	Broken not read	#VALUE!	#VALUE!
May 9, 2024	14.59	12.03	4621.01	not read	#VALUE!	#VALUE!	Broken not read	#VALUE!	#VALUE!
June 11, 2024	14.07	11.51	4621.53	not read	#VALUE!	#VALUE!	Broken not read	#VALUE!	#VALUE!
July 16, 2024	14.23	11.67	4621.37	not read	#VALUE!	#VALUE!	Broken not read	#VALUE!	#VALUE!
August 15, 2024	14.51	11.95	4621.09	not read	#VALUE!	#VALUE!	Broken not read	#VALUE!	#VALUE!

## Derr Pit Monitor Well Readings

Well Designation	MW-10			MW-11			MW-12		
Top of Well (ft)	4632.11			4630.46			4631.20		
Ground Elevation (ft)	4630.34			4628.05			4629.03		
Date	Depth to Groundwater from Top of Well (ft)	Depth to Groundwater from Ground (ft)	Elevation of Groundwater (ft)	Depth to Groundwater from Top of Well (ft)	Depth to Groundwater from Ground (ft)	Elevation of Groundwater (ft)	Depth to Groundwater from Top of Well (ft)	Depth to Groundwater from Ground (ft)	Elevation of Groundwater (ft)
September 26, 2018	14.75	12.98	4617.36	14.21	11.80	4616.25	16.58	14.41	4614.62
October 26, 2018	13.89	12.12	4618.22	13.89	11.48	4616.57	16.51	14.34	4614.69
November 20, 2018	14.25	12.48	4617.86	13.80	11.39	4616.66	16.49	14.32	4614.71
December 18, 2018	14.25	12.48	4617.86	13.80	11.39	4616.66	16.49	14.32	4614.71
January 17, 2019	14.60	12.83	4617.51	14.22	11.81	4616.24	16.95	14.78	4614.25
February 12, 2019	14.98	13.21	4617.13	14.58	12.17	4615.88	17.33	15.16	4613.87
March 7, 2019	24.30	22.53	4607.81	14.81	12.40	4615.65	17.54	15.37	4613.66
April 22, 2019	15.85	14.08	4616.26	15.55	13.14	4614.91	18.03	15.86	4613.17
May 14, 2019	26.60	24.83	4605.51	16.70	14.29	4613.76	27.43	25.26	4603.77
June 21, 2019	18.67	16.90	4613.44	17.87	15.46	4612.59	19.09	16.92	4612.11
July 24, 2019	18.79	17.02	4613.32	18.04	15.63	4612.42	19.62	17.45	4611.58
August 21, 2019	19.10	17.33	4613.01	18.45	16.04	4612.01	20.23	18.06	4610.97
September 17, 2019	19.87	18.10	4612.24	19.61	17.20	4610.85	21.61	19.44	4609.59
October 17, 2019	20.48	18.71	4611.63	19.79	17.38	4610.67	21.31	19.14	4609.89
November 13, 2019	20.82	19.05	4611.29	20.36	17.95	4610.10	22.43	20.26	4608.77
December 10, 2019	20.78	19.01	4611.33	20.30	17.89	4610.16	22.41	20.24	4608.79
January 9, 2020	20.95	19.18	4611.16	20.52	18.11	4609.94	22.67	20.50	4608.53
February 12, 2020	22.46	20.69	4609.65	22.41	20.00	4608.05	24.09	21.92	4607.11
March 12, 2020	19.95	18.18	4612.16	19.04	16.63	4611.42	20.78	18.61	4610.42
April 9, 2020	17.02	15.25	4615.09	17.22	14.81	4613.24	19.22	17.05	4611.98
May 14, 2020	17.30	15.53	4614.81	not read	#VALUE!	#VALUE!	not read	#VALUE!	#VALUE!
June 11, 2020	17.22	15.45	4614.89	not read	#VALUE!	#VALUE!	not read	#VALUE!	#VALUE!
July 9, 2020	not read	#VALUE!	#VALUE!	not read	#VALUE!	#VALUE!	not read	#VALUE!	#VALUE!
August 13, 2020	not read	#VALUE!	#VALUE!	not read	#VALUE!	#VALUE!	not read	#VALUE!	#VALUE!
September 10, 2020	not read	#VALUE!	#VALUE!	not read	#VALUE!	#VALUE!	not read	#VALUE!	#VALUE!
October 8, 2020	not read	#VALUE!	#VALUE!	not read	#VALUE!	#VALUE!	not read	#VALUE!	#VALUE!
November 12, 2020	not read	#VALUE!	#VALUE!	not read	#VALUE!	#VALUE!	not read	#VALUE!	#VALUE!
December 10, 2020	not read	#VALUE!	#VALUE!	not read	#VALUE!	#VALUE!	not read	#VALUE!	#VALUE!
January 14, 2021	not read	#VALUE!	#VALUE!	not read	#VALUE!	#VALUE!	not read	#VALUE!	#VALUE!
February 12, 2021	not read	#VALUE!	#VALUE!	not read	#VALUE!	#VALUE!	not read	#VALUE!	#VALUE!
March 11, 2021	not read	#VALUE!	#VALUE!	not read	#VALUE!	#VALUE!	not read	#VALUE!	#VALUE!
April 8, 2021	not read	#VALUE!	#VALUE!	not read	#VALUE!	#VALUE!	not read	#VALUE!	#VALUE!
May 13, 2021	not read	#VALUE!	#VALUE!	not read	#VALUE!	#VALUE!	not read	#VALUE!	#VALUE!
June 10, 2021	not read	#VALUE!	#VALUE!	not read	#VALUE!	#VALUE!	not read	#VALUE!	#VALUE!
July 8, 2021	not read	#VALUE!	#VALUE!	not read	#VALUE!	#VALUE!	not read	#VALUE!	#VALUE!
August 12, 2021	not read	#VALUE!	#VALUE!	not read	#VALUE!	#VALUE!	not read	#VALUE!	#VALUE!
September 9, 2021	not read	#VALUE!	#VALUE!	33.82	31.41	4596.84	not read	#VALUE!	#VALUE!
October 14, 2021	not read	#VALUE!	#VALUE!	35.70	33.29	4594.76	not read	#VALUE!	#VALUE!
November 12, 2021	not read	#VALUE!	#VALUE!	35.92	33.51	4594.54	not read	#VALUE!	#VALUE!
December 9, 2021	not read	#VALUE!	#VALUE!	35.80	33.39	4594.66	not read	#VALUE!	#VALUE!
January 13, 2022	not read	#VALUE!	#VALUE!	35.80	33.39	4594.66	not read	#VALUE!	#VALUE!
February 9, 2022	not read	#VALUE!	#VALUE!	35.61	33.20	4594.85	not read	#VALUE!	#VALUE!
March 11, 2022	not read	#VALUE!	#VALUE!	not read	#VALUE!	#VALUE!	not read	#VALUE!	#VALUE!
April 14, 2022	not read	#VALUE!	#VALUE!	not read	#VALUE!	#VALUE!	not read	#VALUE!	#VALUE!
May 17, 2022	not read	#VALUE!	#VALUE!	not read	#VALUE!	#VALUE!	not read	#VALUE!	#VALUE!
June 9, 2022	not read	#VALUE!	#VALUE!	not read	#VALUE!	#VALUE!	not read	#VALUE!	#VALUE!
July 14, 2022	not read	#VALUE!	#VALUE!	not read	#VALUE!	#VALUE!	not read	#VALUE!	#VALUE!
August 11, 2022	not read	#VALUE!	#VALUE!	not read	#VALUE!	#VALUE!	not read	#VALUE!	#VALUE!
September 8, 2022	not read	#VALUE!	#VALUE!	not read	#VALUE!	#VALUE!	not read	#VALUE!	#VALUE!
October 11, 2022	not read	#VALUE!	#VALUE!	not read	#VALUE!	#VALUE!	not read	#VALUE!	#VALUE!
November 10, 2022	not read	#VALUE!	#VALUE!	not read	#VALUE!	#VALUE!	not read	#VALUE!	#VALUE!
December 8, 2022	not read	#VALUE!	#VALUE!	not read	#VALUE!	#VALUE!	not read	#VALUE!	#VALUE!
January 12, 2023	not read	#VALUE!	#VALUE!	not read	#VALUE!	#VALUE!	not read	#VALUE!	#VALUE!
February 9, 2023	not read	#VALUE!	#VALUE!	not read	#VALUE!	#VALUE!	not read	#VALUE!	#VALUE!
March 9, 2023	not read	#VALUE!	#VALUE!	not read	#VALUE!	#VALUE!	not read	#VALUE!	#VALUE!
April 25, 2023	not read	#VALUE!	#VALUE!	not read	#VALUE!	#VALUE!	not read	#VALUE!	#VALUE!
May 11, 2023	not read	#VALUE!	#VALUE!	not read	#VALUE!	#VALUE!	not read	#VALUE!	#VALUE!
June 8, 2023	not read	#VALUE!	#VALUE!	not read	#VALUE!	#VALUE!	not read	#VALUE!	#VALUE!
July 13, 2023	not read	#VALUE!	#VALUE!	not read	#VALUE!	#VALUE!	not read	#VALUE!	#VALUE!
August 10, 2023	not read	#VALUE!	#VALUE!	not read	#VALUE!	#VALUE!	not read	#VALUE!	#VALUE!
September 14, 2023	not read	#VALUE!	#VALUE!	not read	#VALUE!	#VALUE!	not read	#VALUE!	#VALUE!
October 12, 2023	not read	#VALUE!	#VALUE!	not read	#VALUE!	#VALUE!	not read	#VALUE!	#VALUE!
November 9, 2023	not read	#VALUE!	#VALUE!	not read	#VALUE!	#VALUE!	not read	#VALUE!	#VALUE!
December 14, 2023	not read	#VALUE!	#VALUE!	not read	#VALUE!	#VALUE!	not read	#VALUE!	#VALUE!
January 19, 2024	not read	#VALUE!	#VALUE!	not read	#VALUE!	#VALUE!	not read	#VALUE!	#VALUE!
February 8, 2024	not read	#VALUE!	#VALUE!	not read	#VALUE!	#VALUE!	not read	#VALUE!	#VALUE!
March 22, 2024	not read	#VALUE!	#VALUE!	not read	#VALUE!	#VALUE!	not read	#VALUE!	#VALUE!
April 18, 2024	not read	#VALUE!	#VALUE!	not read	#VALUE!	#VALUE!	not read	#VALUE!	#VALUE!
May 9, 2024	not read	#VALUE!	#VALUE!	not read	#VALUE!	#VALUE!	not read	#VALUE!	#VALUE!
June 11, 2024	not read	#VALUE!	#VALUE!	not read	#VALUE!	#VALUE!	not read	#VALUE!	#VALUE!
July 16, 2024	not read	#VALUE!	#VALUE!	not read	#VALUE!	#VALUE!	not read	#VALUE!	#VALUE!
August 15, 2024	not read	#VALUE!	#VALUE!	not read	#VALUE!	#VALUE!	not read	#VALUE!	#VALUE!

Derr Pit Monitor Well Readings

Well Designation	MW-13			MW-14			MW-15		
Top of Well (ft)	4631.38			4660.59			4660.36		
Ground Elevation (ft)	4628.59			4659.55			4657.92		
Date	Depth to Groundwater from Top of Well (ft)	Depth to Groundwater from Ground (ft)	Elevation of Groundwater (ft)	Depth to Groundwater from Top of Well (ft)	Depth to Groundwater from Ground (ft)	Elevation of Groundwater (ft)	Depth to Groundwater from Top of Well (ft)	Depth to Groundwater from Ground (ft)	Elevation of Groundwater (ft)
September 26, 2018	17.42	14.63	4613.96	49.19	48.15	4611.40	41.59	39.15	4618.77
October 26, 2018	17.21	14.42	4614.17	45.97	44.93	4614.62	41.11	38.67	4619.25
November 20, 2018	17.18	14.39	4614.20	45.90	44.86	4614.69	43.01	40.57	4617.35
December 18, 2018	26.48	23.69	4604.90	45.90	44.86	4614.69	43.01	40.57	4617.35
January 17, 2019	17.70	14.91	4613.68	46.37	45.33	4614.22	41.37	38.93	4618.99
February 12, 2019	18.08	15.29	4613.30	46.75	45.71	4613.84	41.71	39.27	4618.65
March 7, 2019	18.32	15.53	4613.06	46.99	45.95	4613.60	51.07	48.63	4609.29
April 22, 2019	19.18	16.39	4612.20	47.61	46.57	4612.98	42.55	40.11	4617.81
May 14, 2019	29.09	26.30	4602.29	48.44	47.40	4612.15	43.49	41.05	4616.87
June 21, 2019	20.87	18.08	4610.51	49.02	47.98	4611.57	43.61	41.17	4616.75
July 24, 2019	21.17	18.38	4610.21	50.15	49.11	4610.44	44.31	41.87	4616.05
August 21, 2019	21.39	18.60	4609.99	49.56	48.52	4611.03	44.71	42.27	4615.65
September 17, 2019	22.97	20.18	4608.41	50.66	49.62	4609.93	45.08	42.64	4615.28
October 17, 2019	22.55	19.76	4608.83	50.65	49.61	4609.94	45.40	42.96	4614.96
November 13, 2019	23.62	20.83	4607.76	50.65	49.61	4609.94	45.64	43.20	4614.72
December 10, 2019	23.62	20.83	4607.76	51.25	50.21	4609.34	45.57	43.13	4614.79
January 9, 2020	23.87	21.08	4607.51	51.59	50.55	4609.00	45.63	43.19	4614.73
February 12, 2020	25.89	23.10	4605.49	53.60	52.56	4606.99	46.98	44.54	4613.38
March 12, 2020	21.90	19.11	4609.48	50.60	49.56	4609.99	45.42	42.98	4614.94
April 9, 2020	20.12	17.33	4611.26	49.21	48.17	4611.38	44.25	41.81	4616.11
May 14, 2020	not read	#VALUE!	#VALUE!	48.82	47.78	4611.77	43.85	41.41	4616.51
June 11, 2020	not read	#VALUE!	#VALUE!	48.69	47.65	4611.90	43.53	41.09	4616.83
July 9, 2020	not read	#VALUE!	#VALUE!	48.25	47.21	4612.34	43.38	40.94	4616.98
August 13, 2020	not read	#VALUE!	#VALUE!	48.29	48.25	4611.30	44.61	42.17	4615.75
September 10, 2020	not read	#VALUE!	#VALUE!	48.91	47.87	4611.68	44.10	41.66	4616.26
October 8, 2020	not read	#VALUE!	#VALUE!	48.68	47.64	4611.91	43.53	41.09	4616.83
November 12, 2020	not read	#VALUE!	#VALUE!	49.63	48.59	4610.96	43.72	41.28	4616.64
December 10, 2020	not read	#VALUE!	#VALUE!	49.74	48.70	4610.85	43.13	40.69	4617.23
January 14, 2021	not read	#VALUE!	#VALUE!	49.26	48.22	4611.33	42.31	39.87	4618.05
February 12, 2021	not read	#VALUE!	#VALUE!	49.45	48.41	4611.14	42.69	40.25	4617.67
March 11, 2021	not read	#VALUE!	#VALUE!	48.89	47.85	4611.70	43.10	40.66	4617.26
April 8, 2021	not read	#VALUE!	#VALUE!	49.25	48.21	4611.34	43.44	41.00	4616.92
May 13, 2021	not read	#VALUE!	#VALUE!	49.11	48.07	4611.48	43.70	41.26	4616.66
June 10, 2021	not read	#VALUE!	#VALUE!	48.09	47.05	4612.50	43.29	40.85	4617.07
July 8, 2021	not read	#VALUE!	#VALUE!	47.53	46.49	4613.06	42.70	40.26	4617.66
August 12, 2021	not read	#VALUE!	#VALUE!	48.25	47.21	4612.34	43.50	41.06	4616.96
September 9, 2021	not read	#VALUE!	#VALUE!	48.09	47.05	4611.50	42.33	39.89	4616.03
October 14, 2021	not read	#VALUE!	#VALUE!	48.60	47.56	4611.99	42.10	39.66	4616.26
November 12, 2021	not read	#VALUE!	#VALUE!	48.56	47.52	4612.03	41.46	39.02	4616.90
December 9, 2021	not read	#VALUE!	#VALUE!	48.28	47.24	4612.31	40.28	37.84	4620.08
January 13, 2022	not read	#VALUE!	#VALUE!	48.52	47.48	4612.07	40.47	38.03	4619.89
February 9, 2022	not read	#VALUE!	#VALUE!	48.69	47.65	4611.90	40.50	38.06	4619.86
March 11, 2022	not read	#VALUE!	#VALUE!	48.77	47.73	4611.82	40.63	38.19	4619.73
April 14, 2022	not read	#VALUE!	#VALUE!	48.02	46.98	4612.57	39.97	37.53	4620.39
May 17, 2022	not read	#VALUE!	#VALUE!	47.27	46.23	4613.32	40.05	37.61	4620.31
June 9, 2022	not read	#VALUE!	#VALUE!	47.81	46.77	4612.78	40.77	38.33	4619.59
July 14, 2022	not read	#VALUE!	#VALUE!	47.13	46.09	4613.46	40.75	38.31	4619.61
August 11, 2022	not read	#VALUE!	#VALUE!	48.77	47.73	4611.82	41.51	39.07	4618.85
September 8, 2022	not read	#VALUE!	#VALUE!	48.62	47.58	4611.97	41.52	39.08	4618.84
October 11, 2022	not read	#VALUE!	#VALUE!	48.00	46.96	4612.59	40.47	38.03	4619.89
November 10, 2022	not read	#VALUE!	#VALUE!	47.97	46.93	4612.62	41.10	38.66	4619.26
December 8, 2022	not read	#VALUE!	#VALUE!	47.90	46.86	4612.69	40.11	37.67	4620.25
January 12, 2023	not read	#VALUE!	#VALUE!	48.34	47.30	4612.25	40.39	37.95	4619.97
February 9, 2023	not read	#VALUE!	#VALUE!	48.25	47.21	4612.34	40.39	37.95	4619.97
March 9, 2023	not read	#VALUE!	#VALUE!	49.00	47.96	4611.59	39.90	37.46	4620.46
April 25, 2023	not read	#VALUE!	#VALUE!	49.41	48.37	4611.18	40.40	37.96	4619.96
May 11, 2023	not read	#VALUE!	#VALUE!	48.65	47.61	4611.94	41.54	39.10	4618.82
June 8, 2023	not read	#VALUE!	#VALUE!	47.90	46.86	4612.69	41.02	38.58	4619.34
July 13, 2023	not read	#VALUE!	#VALUE!	46.54	45.50	4614.05	40.03	37.59	4620.33
August 10, 2023	not read	#VALUE!	#VALUE!	46.05	45.01	4614.54	40.04	37.60	4620.32
September 14, 2023	not read	#VALUE!	#VALUE!	46.65	45.61	4613.94	39.95	37.51	4620.41
October 12, 2023	not read	#VALUE!	#VALUE!	46.49	45.45	4614.10	39.28	36.84	4621.08
November 9, 2023	not read	#VALUE!	#VALUE!	46.64	45.60	4613.95	39.12	36.68	4621.24
December 14, 2023	not read	#VALUE!	#VALUE!	47.03	45.99	4613.56	39.19	36.75	4621.17
January 19, 2024	not read	#VALUE!	#VALUE!	49.00	47.96	4611.59	39.90	37.46	4620.46
February 8, 2024	not read	#VALUE!	#VALUE!	47.73	46.69	4612.86	39.65	37.21	4620.71
March 22, 2024	not read	#VALUE!	#VALUE!	48.22	47.18	4612.37	40.15	37.71	4620.21
April 18, 2024	not read	#VALUE!	#VALUE!	48.28	47.24	4612.31	42.62	40.18	4617.74
May 9, 2024	not read	#VALUE!	#VALUE!	47.64	46.60	4612.95	40.56	38.12	4619.80
June 11, 2024	not read	#VALUE!	#VALUE!	46.75	45.71	4613.84	40.21	37.77	4620.19
July 16, 2024	not read	#VALUE!	#VALUE!	47.07	46.03	4613.52	40.36	37.92	4620.00
August 15, 2024	not read	#VALUE!	#VALUE!	48.18	47.14	4612.41	41.12	38.68	4619.24

Derr Pit Monitor Well Readings

Well Designation	MW-16			MW-17			MW-18		
Top of Well (ft)	4656.19			4663.63			4667.49		
Ground Elevation (ft)	4653.45			4660.53			4664.55		
Date	Depth to Groundwater from Top of Well (ft)	Depth to Groundwater from Ground (ft)	Elevation of Groundwater (ft)	Depth to Groundwater from Top of Well (ft)	Depth to Groundwater from Ground (ft)	Elevation of Groundwater (ft)	Depth to Groundwater from Top of Well (ft)	Depth to Groundwater from Ground (ft)	Elevation of Groundwater (ft)
September 26, 2018									
October 26, 2018									
November 20, 2018									
December 18, 2018									
January 17, 2019									
February 12, 2019									
March 7, 2019									
April 22, 2019									
May 14, 2019									
June 21, 2019									
July 24, 2019									
August 21, 2019	43.63	40.89	4612.56	47.00	43.90	4616.63	46.38	43.44	4621.11
September 17, 2019	44.44	41.70	4611.75	46.95	43.85	4616.68	46.52	43.58	4620.97
October 17, 2019	44.52	41.78	4611.67	46.59	43.49	4617.04	46.61	43.67	4620.88
November 13, 2019	44.87	42.13	4611.32	46.75	43.65	4616.88	46.74	43.80	4620.75
December 10, 2019	44.91	42.17	4611.28	46.80	43.70	4616.83	46.73	43.79	4620.76
January 9, 2020	45.30	42.56	4610.89	47.16	44.06	4616.47	46.95	44.01	4620.54
February 12, 2020	46.53	43.79	4609.66	47.87	44.77	4615.76	47.54	44.60	4619.95
March 12, 2020	45.22	42.48	4610.97	47.68	44.58	4615.95	47.32	44.38	4620.17
April 9, 2020	44.38	41.64	4611.81	47.31	44.21	4616.32	46.97	44.03	4620.52
May 14, 2020	43.90	41.16	4612.29	47.00	43.90	4616.63	46.63	43.69	4620.86
June 11, 2020	43.50	40.76	4612.69	46.52	43.42	4617.11	46.15	43.21	4621.34
July 9, 2020	43.33	40.59	4612.86	48.89	45.79	4614.74	46.14	43.20	4621.35
August 13, 2020	44.61	41.87	4611.58	48.41	45.31	4615.22	47.21	44.27	4620.28
September 10, 2020	44.25	41.51	4611.94	47.56	44.46	4616.07	46.85	43.91	4620.64
October 8, 2020	43.56	40.82	4612.63	46.27	43.17	4617.36	46.05	43.11	4621.44
November 12, 2020	43.85	41.11	4612.34	46.19	43.09	4617.44	46.06	43.12	4621.43
December 10, 2020	44.03	41.29	4612.16	46.22	43.12	4617.41	45.91	42.97	4621.58
January 14, 2021	43.68	40.94	4612.51	46.09	42.99	4617.54	45.67	42.73	4621.82
February 12, 2021	43.84	41.10	4612.35	46.23	43.13	4617.40	45.95	43.01	4621.54
March 11, 2021	43.65	40.91	4612.54	46.43	43.33	4617.20	46.33	43.39	4621.16
April 8, 2021	43.96	41.22	4612.23	46.69	43.59	4616.94	46.65	43.71	4620.84
May 13, 2021	43.49	40.75	4612.70	47.01	43.91	4616.62	46.87	43.93	4620.62
June 10, 2021	43.16	40.42	4613.03	46.50	43.40	4617.13	46.56	43.62	4620.93
July 8, 2021	42.71	39.97	4613.48	46.10	43.00	4617.53	46.00	43.06	4621.49
August 12, 2021	43.45	40.71	4612.74	47.70	44.80	4615.93	46.95	44.01	4620.54
September 9, 2021	43.94	41.20	4612.25	47.70	44.60	4615.93	46.28	43.34	4621.21
October 14, 2021	43.02	40.28	4613.17	45.65	42.55	4617.98	46.05	43.11	4621.44
November 12, 2021	42.59	39.85	4613.60	45.14	42.04	4618.49	45.44	42.50	4622.05
December 9, 2021	42.57	39.83	4613.62	45.00	41.90	4618.63	44.21	41.27	4623.28
January 13, 2022	42.21	39.47	4613.98	45.31	42.21	4618.32	44.46	41.52	4623.03
February 9, 2022	43.02	40.28	4613.17	45.36	42.26	4618.27	44.48	41.54	4623.01
March 11, 2022	43.15	40.41	4613.04	45.51	42.41	4618.12	44.55	41.61	4622.94
April 14, 2022	43.10	40.36	4613.09	45.76	42.66	4617.87	44.91	41.97	4622.58
May 17, 2022	42.93	40.19	4613.26	45.91	42.81	4617.72	45.19	42.25	4622.30
June 9, 2022	42.43	39.69	4613.76	45.50	42.40	4618.13	44.90	41.96	4622.59
July 14, 2022	43.24	40.50	4612.95	No Reading	#VALUE!	#VALUE!	45.18	42.24	4622.31
August 11, 2022	43.11	40.37	4613.08	No Reading	#VALUE!	#VALUE!	45.70	42.76	4621.79
September 8, 2022	43.46	40.72	4612.73	49.63	44.47	4614.00	45.49	42.55	4622.00
October 11, 2022	42.46	39.72	4613.73	47.36	42.20	4616.27	44.43	41.49	4623.06
November 10, 2022	42.28	39.54	4613.91	46.93	41.77	4616.70	44.10	41.16	4623.39
December 8, 2022	42.27	39.53	4613.92	47.03	41.87	4616.60	44.12	41.18	4623.37
January 12, 2023	42.65	39.91	4613.54	47.33	42.17	4616.30	44.40	41.46	4623.09
February 9, 2023	42.65	39.91	4613.54	47.33	42.17	4616.30	44.40	41.46	4623.09
March 9, 2023	43.30	40.56	4612.89	47.89	42.73	4615.74	44.91	41.97	4622.58
April 25, 2023	43.80	41.06	4612.39	49.41	44.25	4614.22	46.50	43.56	4620.99
May 11, 2023	43.37	40.63	4612.82	49.52	44.36	4614.11	45.73	42.79	4621.76
June 8, 2023	42.70	39.96	4613.49	48.06	42.90	4615.57	45.17	42.23	4622.32
July 13, 2023	41.50	38.76	4614.69	47.35	42.19	4616.28	44.30	41.36	4623.19
August 10, 2023	41.22	38.48	4614.97	47.94	42.78	4615.69	44.78	41.84	4622.71
September 14, 2023	41.45	38.71	4614.74	47.30	42.14	4616.33	44.09	41.15	4623.40
October 12, 2023	41.01	38.27	4615.18	46.13	40.97	4617.50	43.38	40.44	4624.11
November 9, 2023	41.06	38.32	4615.13	45.97	40.81	4624.53	43.24	40.30	4624.25
December 14, 2023	41.36	38.62	4614.83	46.11	40.95	4624.39	43.24	40.30	4624.25
January 19, 2024	43.30	40.56	4612.89	47.89	42.73	4622.61	44.91	41.97	4622.58
February 8, 2024	42.10	39.36	4614.09	46.70	41.54	4623.80	43.66	40.72	4623.83
March 22, 2024	42.56	39.82	4613.63	47.19	42.03	4623.31	44.18	41.24	4623.31
April 18, 2024	42.79	40.05	4613.40	47.68	42.52	4622.82	44.75	41.81	4622.74
May 9, 2024	42.31	39.57	4613.88	47.69	42.53	4622.81	44.79	41.85	4622.70
June 11, 2024	41.63	38.89	4614.66	47.27	42.11	4623.23	44.55	41.61	4623.94
July 16, 2024	41.90	39.16	4614.29	47.98	42.82	4622.52	44.77	41.83	4622.72
August 15, 2024	42.93	40.19	4613.26	48.80	43.64	4621.70	45.41	42.47	4622.08

9/8/22 MW-17 Repaired and Top of Well is at Elevation 4670.5

August 28, 2024

Mr. Dave Bliss  
40738 Poudre Canyon  
Bellevue, CO 80512

Dear Mr. Bliss:

AGPROfessionals' staff have been monitoring groundwater elevations on behalf of W.W. Clyde & Co. at your property. We perform this monitoring on the second week of each month. Attached is the elevation we recorded on August 15, 2024.

Identifier	Depth to Water from Ground Surface (ft.)
Bliss Irr	NA

Has the 2-foot trigger point for two consecutive months been met?

☐ Yes

☒ No

Please find the attached table and graph representing the data collected to this date. Please do not hesitate to contact me regarding these activities.

Sincerely,



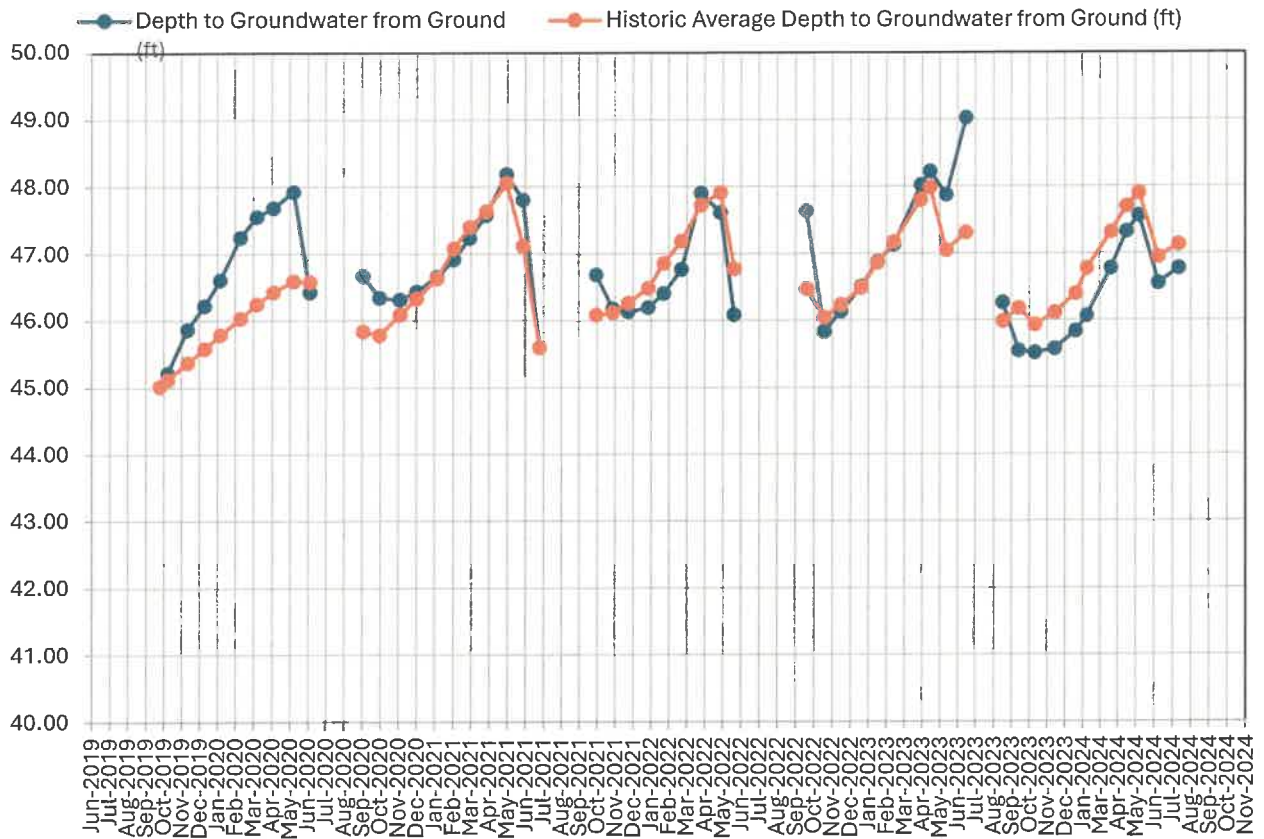
Maria Irianni Renno, PhD.  
Sr. Environmental Engineer  
970-702-8946



Derr Pit Off-Site Well Readings

Well Designation	Bliss Irr	
Date	Depth to Groundwater from Ground (ft)	Trigger Level of 2 feet below Historic Average Level Met (Yes or No) Start in May 2020
August 12, 2021		No
September 9, 2021		No
October 14, 2021	46.68	No
November 12, 2021	46.17	No
December 9, 2021	46.13	No
January 13, 2022	46.19	No
February 9, 2022	46.40	No
March 11, 2022	46.76	No
April 14, 2022	47.90	No
May 17, 2022	47.61	No
June 9, 2022	46.08	No
July 14, 2022		No
August 11, 2022		No
September 8, 2022		No
October 11, 2022	47.62	No
November 10, 2022	45.83	No
December 8, 2022	46.13	No
January 12, 2023	46.50	No
February 9, 2023	46.87	No
March 9, 2023	47.13	No
April 25, 2023	48.02	No
May 11, 2023	48.22	No
June 8, 2023	47.87	No
July 13, 2023	49.02	No
August 10, 2023		No
September 14, 2023	46.26	No
October 12, 2023	45.54	No
November 9, 2023	45.51	No
December 14, 2023	45.57	No
January 19, 2024	45.83	No
February 8, 2024	46.06	No
March 22, 2024	46.77	No
April 18, 2024	47.32	No
May 9, 2024	47.56	No
June 11, 2024	46.55	No
July 16, 2024	46.77	No
August 15, 2024		No

## BLISS IRR



### Notes:

- 1) Graph displays Depth to Groundwater (lower depth to groundwater reading means higher water table elevation).
- 2) Trigger point is described in Settlement Agreement.
- 3) Since Historical Data was not established until September 2020, a year-to-date running average was used to compute historical average. As of September 2020, the historical average is computed as described in Settlement Agreement.

---

August 28, 2024

Mr. Rocky Francis  
PO Box 843  
Greeley, CO 80632

Dear Mr. Francis:

AGPROfessionals' staff have been monitoring groundwater elevations on behalf of W.W. Clyde & Co. at your property. We perform this monitoring on the second week of each month. Attached are the elevations we recorded on August 15, 2024.

Identifier	Depth to Water from Ground Surface (ft.)
Francis #1 Stock	12.99
Francis #2 Irr	11.33
Francis #3 Dom	13.35

Has the 2-foot trigger point for two consecutive months been met?

☐ Yes

☒ No

Please find the attached tables and graphs representing the data collected to this date. Please do not hesitate to contact me regarding these activities.

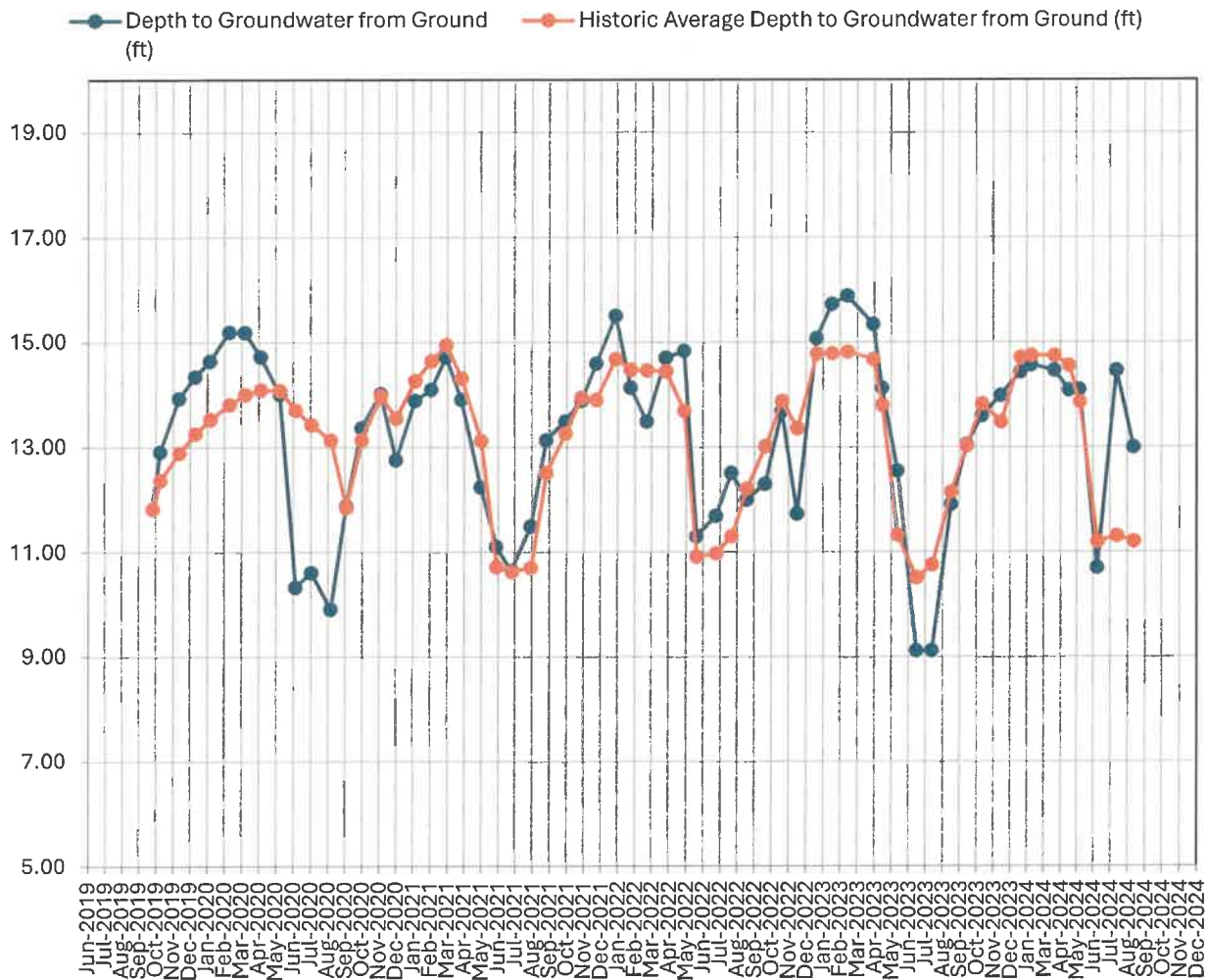
Sincerely,



Maria Irianni Renno, PhD.  
Sr. Environmental Engineer  
970-702-8946

Well Designation	Francis #1 Stock		Francis #2 Irr		Francis #3 Dom	
Date	Depth to Groundwater from Ground (ft)	Trigger Level of 2 feet below Historic Average Level Met (Yes or No) Start in May 2020	Depth to Groundwater from Ground (ft)	Trigger Level of 2 feet below Historic Average Level Met (Yes or No) Start in May 2020	Depth to Groundwater from Ground (ft)	Trigger Level of 2 feet below Historic Average Level Met (Yes or No) Start in May 2020
August 12, 2021	11.48	No	9.69	No	11.85	No
September 9, 2021	13.13	No	11.30	No	13.31	No
October 14, 2021	13.49	No	13.50	No	13.85	No
November 12, 2021	13.88	No	11.91	No	14.37	No
December 9, 2021	14.59	No	13.00	No	15.10	No
January 13, 2022	15.50	No	13.72	No	15.98	No
February 9, 2022	14.13	No	13.17	No	13.82	No
March 11, 2022	13.48	No	11.58	No	13.95	No
April 14, 2022	14.70	No	13.00	No	15.10	No
May 17, 2022	14.83	No	13.09	No	15.29	No
June 9, 2022	11.29	No	9.41	No	11.93	No
July 14, 2022	11.68	No	10.00	No	12.10	No
August 11, 2022	12.50	No	10.86	No	12.89	No
September 8, 2022	11.99	No	10.69	No	12.46	No
October 11, 2022	12.29	No	10.71	No	12.90	No
November 10, 2022	13.68	No	13.07	No	15.08	No
December 8, 2022	11.72	No	10.05	No	12.46	No
January 12, 2023	15.07	No	13.40	No	15.43	No
February 9, 2023	15.72	No	14.03	No	16.03	No
March 9, 2023	15.88	No	14.20	No	16.20	No
April 25, 2023	15.34	No	13.31	No	15.56	No
May 11, 2023	14.12	No	12.36	No	14.69	No
June 8, 2023	12.54	No	10.84	No	13.00	No
July 13, 2023	9.11	No	7.57	No	9.80	No
August 10, 2023	9.11	No	7.69	No	9.92	No
September 14, 2023	11.90	No	10.93	No	12.23	No
October 12, 2023	13.04	No	11.45	No	13.38	No
November 9, 2023	13.59	No	11.97	No	13.89	No
December 14, 2023	13.98	No	12.32	No	14.27	No
January 19, 2024	14.43	No	12.76	No	14.41	No
February 8, 2024	14.56	No	12.90	No	14.81	No
March 22, 2024	14.46	No	12.70	No	14.69	No
April 18, 2024	14.08	No	12.41	No	14.39	No
May 9, 2024	14.09	No	11.90	No	14.14	No
June 11, 2024	10.69	No	9.22	No	10.95	No
July 16, 2024	14.46	Yes	12.70	Yes	14.69	Yes
August 15, 2024	12.99	No	11.33	No	13.35	No

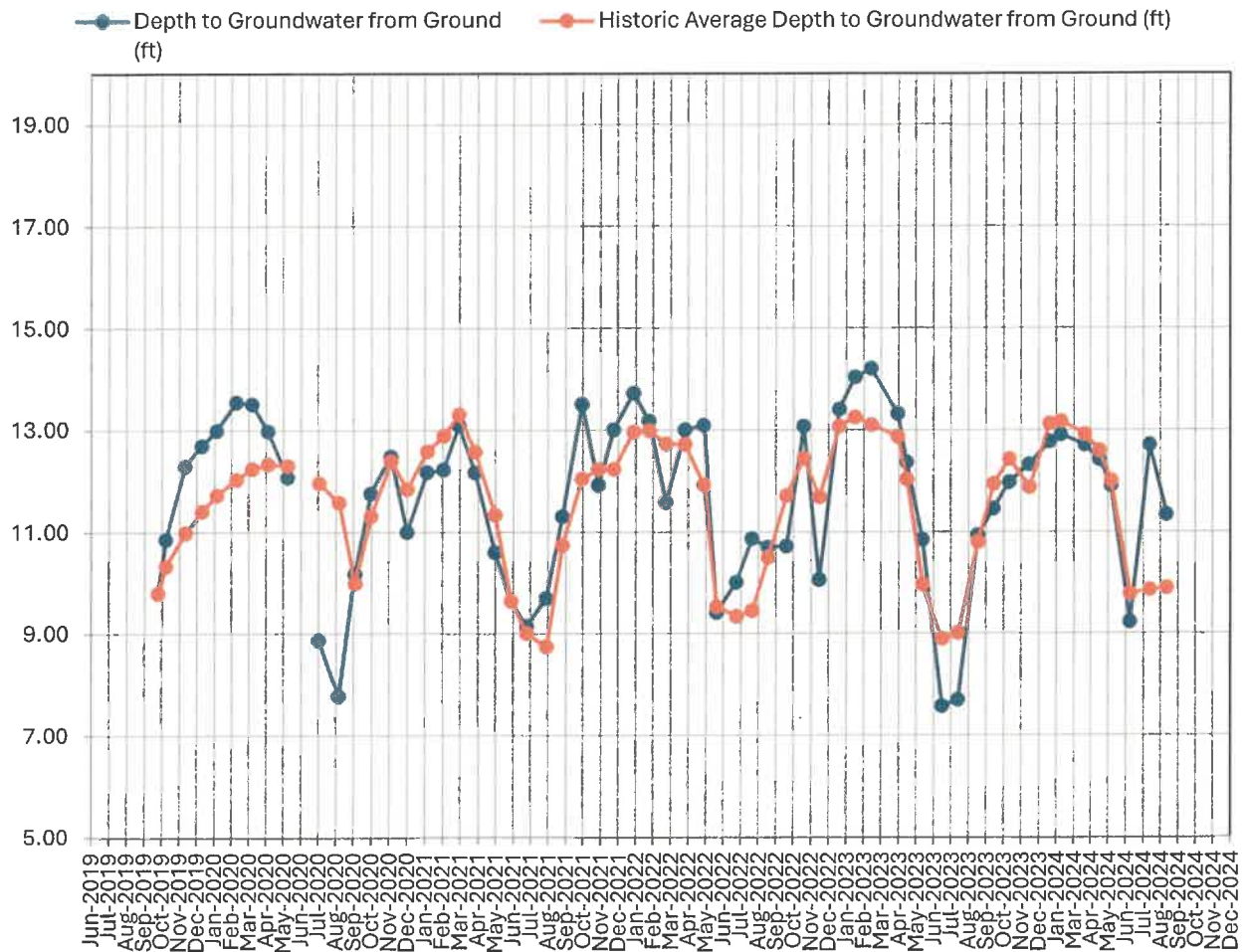
## FRANCIS #1 STOCK



### Notes:

- 1) Graph displays Depth to Groundwater (lower depth to groundwater reading means higher water table elevation).
- 2) Trigger point is described in Settlement Agreement.
- 3) Since Historical Data was not established until September 2020, a year-to-date running average was used to compute historical average. As of September 2020, the historical average is computed as described in Settlement Agreement.

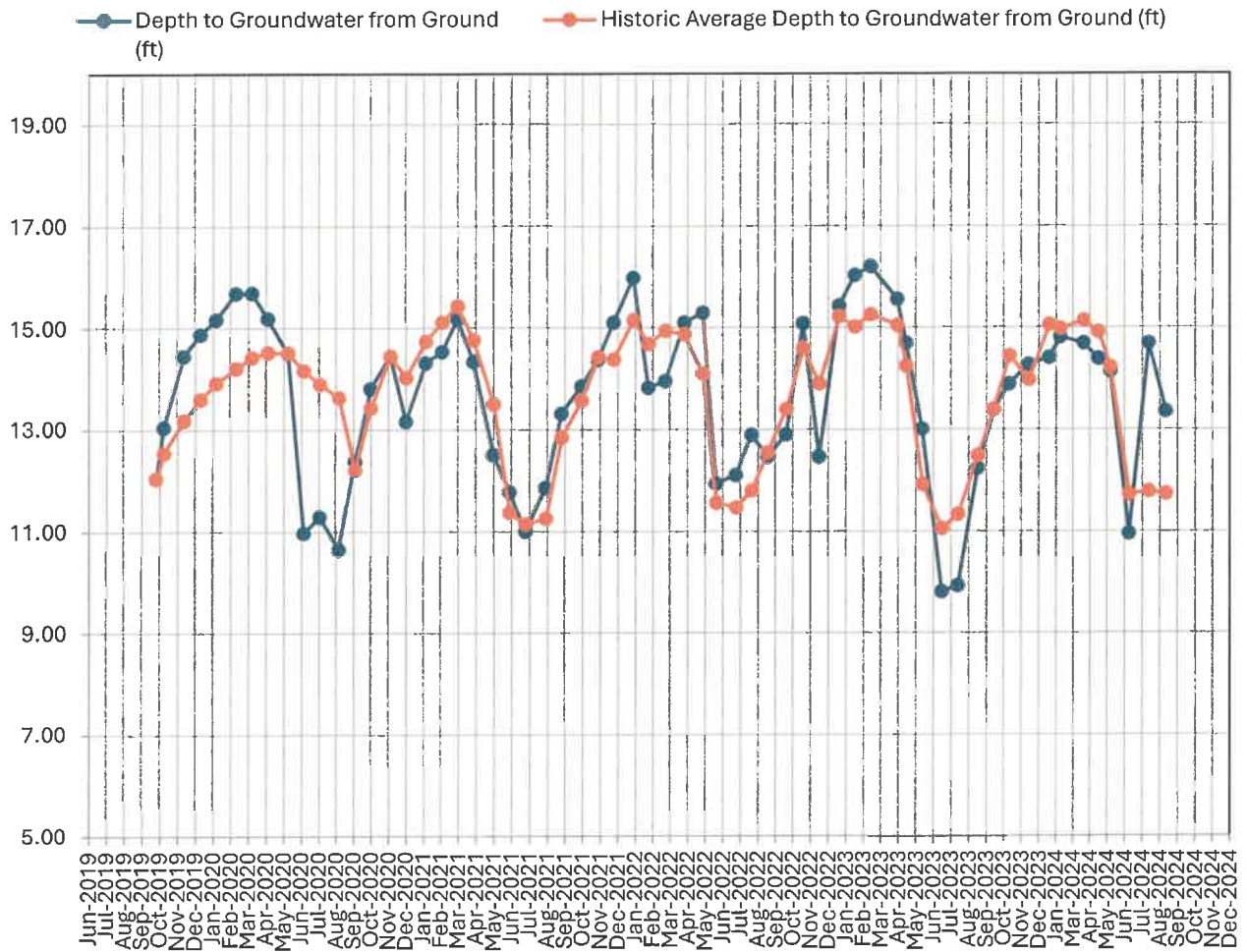
## FRANCIS #2 IRR



### Notes:

- 1) Graph displays Depth to Groundwater (lower depth to groundwater reading means higher water table elevation).
- 2) Trigger point is described in Settlement Agreement.
- 3) Since Historical Data was not established until September 2020, a year-to-date running average was used to compute historical average. As of September 2020, the historical average is computed as described in Settlement Agreement.

## FRANCIS #3 DOM



### Notes:

- 1) Graph displays Depth to Groundwater (lower depth to groundwater reading means higher water table elevation).
- 2) Trigger point is described in Settlement Agreement.
- 3) Since Historical Data was not established until September 2020, a year-to-date running average was used to compute historical average. As of September 2020, the historical average is computed as described in Settlement Agreement



---

August 28, 2024

Mr. Rocky Francis  
665 Balsam Ave.  
Greeley, CO 80631

Dear Mr. Francis:

AGPROfessionals' staff have been monitoring groundwater elevations on behalf of W.W. Clyde & Co. at your property. We perform this monitoring on the second week of each month. Attached is the elevation we recorded on August 15, 2024.

Identifier	Depth to Water from Ground Surface (ft.)
Taylor Dom	17.53

Has the 2-foot trigger point for two consecutive months been met?

☐ Yes

☒ No

Please find the attached table and graph representing the data collected to this date. Please do not hesitate to contact me regarding these activities.

Sincerely,

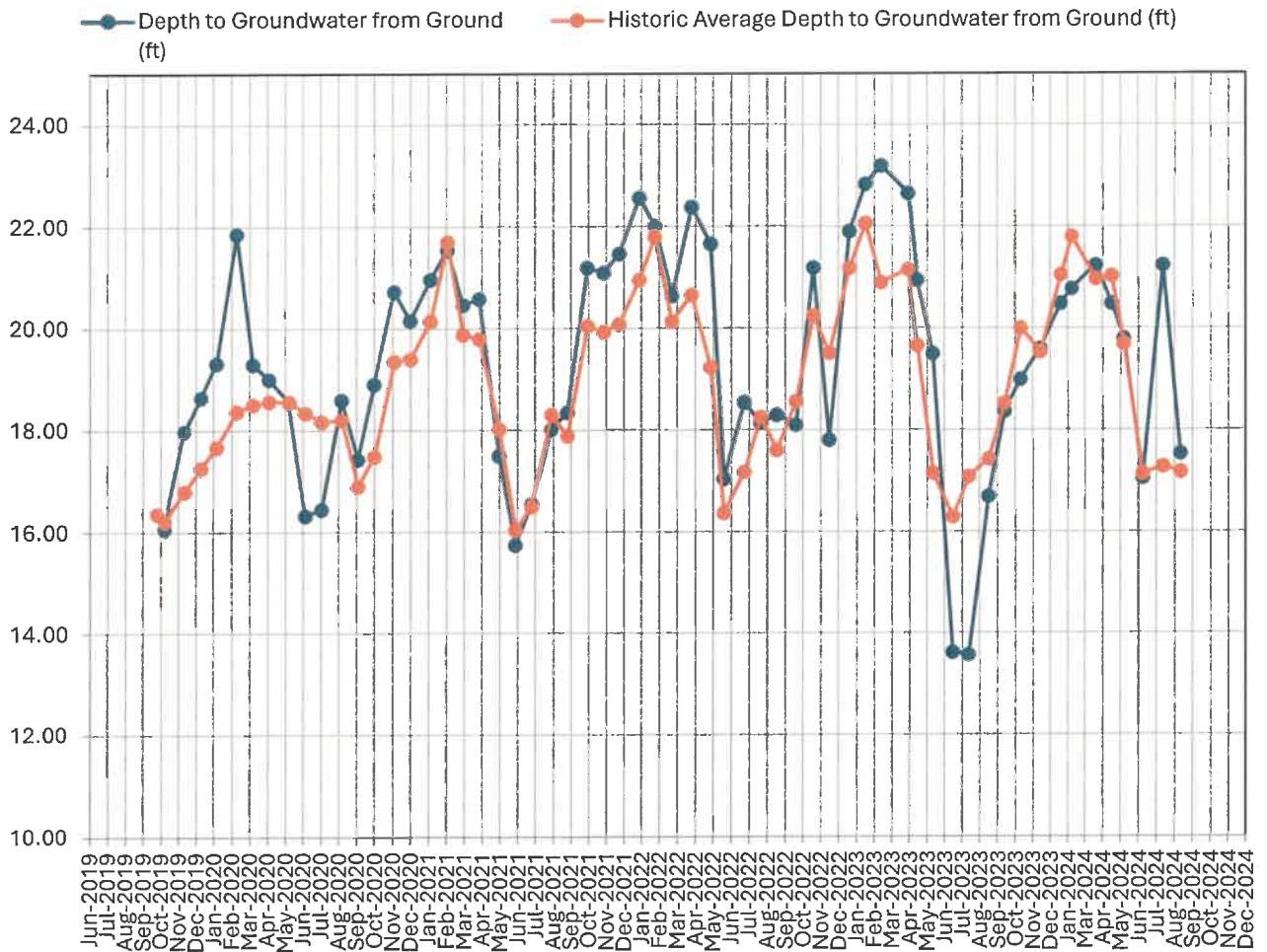


Maria Irianni Renno, PhD.  
Sr. Environmental Engineer  
970-702-8946



Well Designation	Taylor Dom	
Date	Depth to Groundwater from Ground (ft)	Trigger Level of 2 feet below Historic Average Level Met (Yes or No) Start in May 2020
August 12, 2021	18.01	No
September 9, 2021	18.35	No
October 14, 2021	21.19	No
November 12, 2021	21.09	No
December 9, 2021	21.46	No
January 13, 2022	22.56	No
February 9, 2022	22.00	No
March 11, 2022	20.64	No
April 14, 2022	22.38	No
May 17, 2022	21.66	Yes
June 9, 2022	17.04	No
July 14, 2022	18.54	No
August 11, 2022	18.14	No
September 8, 2022	18.29	No
October 11, 2022	18.10	No
November 10, 2022	21.19	No
December 8, 2022	17.80	No
January 12, 2023	21.90	No
February 9, 2023	22.83	No
March 9, 2023	23.19	Yes
April 25, 2023	22.65	No
May 11, 2023	20.94	No
June 8, 2023	19.50	Yes
July 13, 2023	13.62	No
August 10, 2023	13.57	No
September 14, 2023	16.69	No
October 12, 2023	18.36	No
November 9, 2023	18.99	No
December 14, 2023	19.59	No
January 19, 2024	20.48	No
February 8, 2024	20.77	No
March 22, 2024	21.23	No
April 18, 2024	20.48	No
May 9, 2024	19.79	No
June 11, 2024	17.05	No
July 16, 2024	21.23	Yes
August 15, 2024	17.53	No

## TAYLOR DOM



**Notes:**

- 1) Graph displays Depth to Groundwater (lower depth to groundwater reading means higher water table elevation).
- 2) Trigger point is described in Settlement Agreement.
- 3) Since Historical Data was not established until September 2020, a year-to-date running average was used to compute historical average. As of September 2020, the historical average is computed as described in Settlement Agreement.

---

August 28, 2024

Mr. Brian Harrell  
288 1<sup>st</sup> Ave.  
Greeley, CO 80631

Dear Mr. Harrell:

AGPROfessionals' staff have been monitoring groundwater elevations on behalf of W.W. Clyde & Co. at your property. We perform this monitoring on the second week of each month. Attached are the elevations we recorded on August 15, 2024.

Identifier	Depth to Water from Ground Surface (ft.)
Harrell #1 Dom	10.02
Harrell #2 Irr	9.23

Has the 2-foot trigger point for two consecutive months been met?

☐ Yes

☒ No

Please find the attached tables and graphs representing the data collected to this date. Please do not hesitate to contact me regarding these activities.

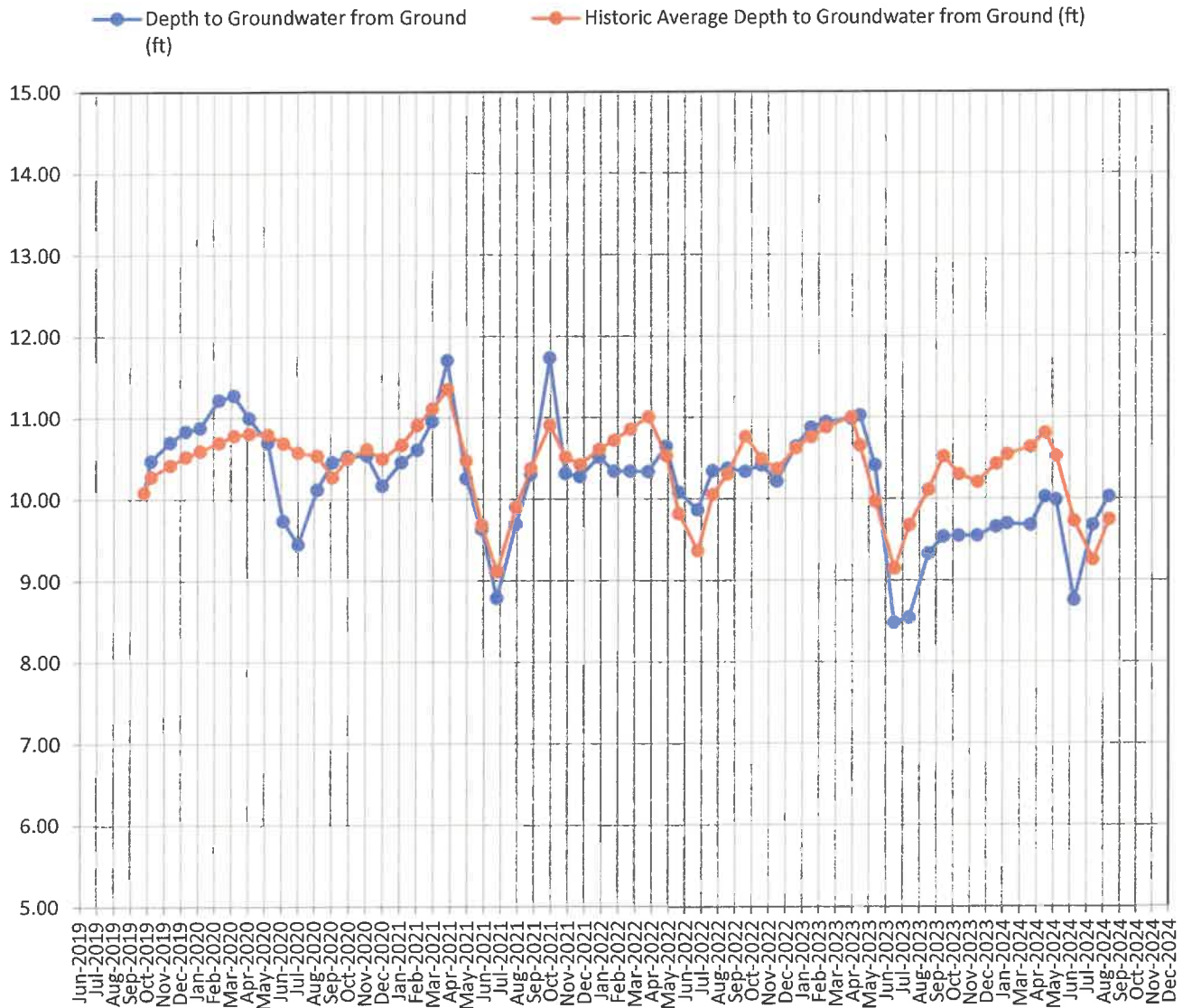
Sincerely,



Maria Irianni Renno, PhD.  
Sr. Environmental Engineer  
970-702-8946

Well Designation		Harrell #1 Dom		Harrell #2 Irr	
Date	Depth to Groundwater from Ground (ft)	Trigger Level of 2 feet below Historic Average Level Met (Yes or No) Start in May 2020	Depth to Groundwater from Ground (ft)	Trigger Level of 2 feet below Historic Average Level Met (Yes or No) Start in May 2020	
August 12, 2021	9.69	No	8.82	No	
September 9, 2021	10.30	No	9.55	No	
October 14, 2021	11.73	No	10.97	No	
November 12, 2021	10.31	No	9.55	No	
December 9, 2021	10.27	No	9.60	No	
January 13, 2022	10.51	No	9.87	No	
February 9, 2022	10.34	No	9.69	No	
March 11, 2022	10.34	No	9.68	No	
April 14, 2022	10.33	No	11.62	No	
May 17, 2022	10.64	No	9.94	No	
June 9, 2022	10.08	No	9.19	No	
July 14, 2022	9.86	No	9.03	No	
August 11, 2022	10.34	No	9.58	No	
September 8, 2022	10.37	No	9.59	No	
October 11, 2022	10.33	No	9.63	No	
November 10, 2022	10.41	No	9.74	No	
December 8, 2022	10.21	No	9.47	No	
January 12, 2023	10.64	No	9.98	No	
February 9, 2023	10.87	No	10.22	No	
March 9, 2023	10.94	No	10.29	No	
April 25, 2023	10.98	No	10.28	No	
May 11, 2023	11.02	No	10.32	No	
June 8, 2023	10.41	No	9.22	No	
July 13, 2023	8.48	No	7.66	No	
August 10, 2023	8.54	No	7.71	No	
September 14, 2023	9.32	No	8.55	No	
October 12, 2023	9.53	No	8.81	No	
November 9, 2023	9.54	No	8.84	No	
December 14, 2023	9.54	No	8.82	No	
January 19, 2024	9.65	No	8.94	No	
February 8, 2024	9.69	No	8.98	No	
March 22, 2024	9.67	No	8.85	No	
April 18, 2024	10.02	No	9.29	No	
May 9, 2024	9.98	No	9.21	No	
June 11, 2024	8.75	No	7.88	No	
July 16, 2024	9.67	No	8.85	No	
August 15, 2024	10.02	No	9.23	No	

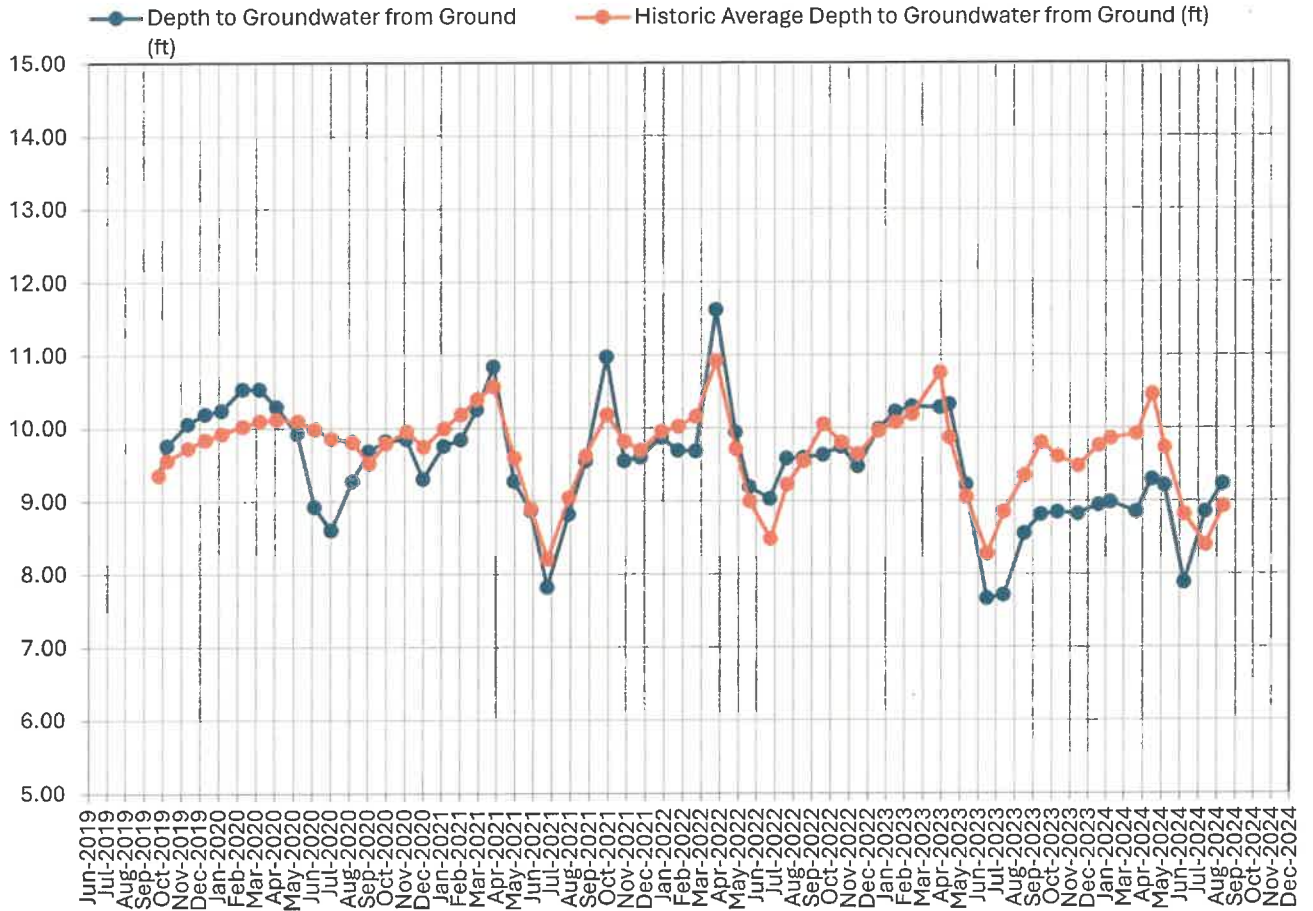
## HARRELL #1 DOM



### Notes:

- 1) Graph displays Depth to Groundwater (lower depth to groundwater reading means higher water table elevation).
- 2) Trigger point is described in Settlement Agreement.
- 3) Since Historical Data was not established until September 2020, a year-to-date running average was used to compute historical average. As of September 2020, the historical average is computed as described in Settlement Agreement.

## HARRELL #2 IRR



### Notes:

- 1) Graph displays Depth to Groundwater (lower depth to groundwater reading means higher water table elevation).
- 2) Trigger point is described in Settlement Agreement.
- 3) Since Historical Data was not established until September 2020, a year-to-date running average was used to compute historical average. As of September 2020, the historical average is computed as described in Settlement Agreement.

---

August 28, 2024

Ms. Dixie Hoffner  
30300 WCR 57  
Gill, CO 80624

Dear Ms. Hoffner:

AGPROfessionals' staff have been monitoring groundwater elevations on behalf of W.W. Clyde & Co. at your property. We perform this monitoring on the second week of each month. Attached are the elevations we recorded on August 15, 2024.

Identifier	Depth to Water from Ground Surface (ft.)
Hoffner #1 Dom	44.73
Hoffner #2 Irr	NA

Has the 2-foot trigger point for two consecutive months been met?

☐ Yes

☒ No

Please find the attached tables and graphs representing the data collected to this date. Please do not hesitate to contact me regarding these activities.

Sincerely,



Maria Irianni Renno, PhD.  
Sr. Environmental Engineer  
970-702-8946

**ENGINEERING, PLANNING, CONSULTING & REAL ESTATE**  
**HQ & Mailing:** 3050 67<sup>th</sup> Avenue, Suite 200, Greeley, CO 80634 | 970.535.9318 office | 970.535.9854 fax  
**Idaho:** 213 Canyon Crest Drive, Suite 100, Twin Falls, ID 83301 | 208.595.5301

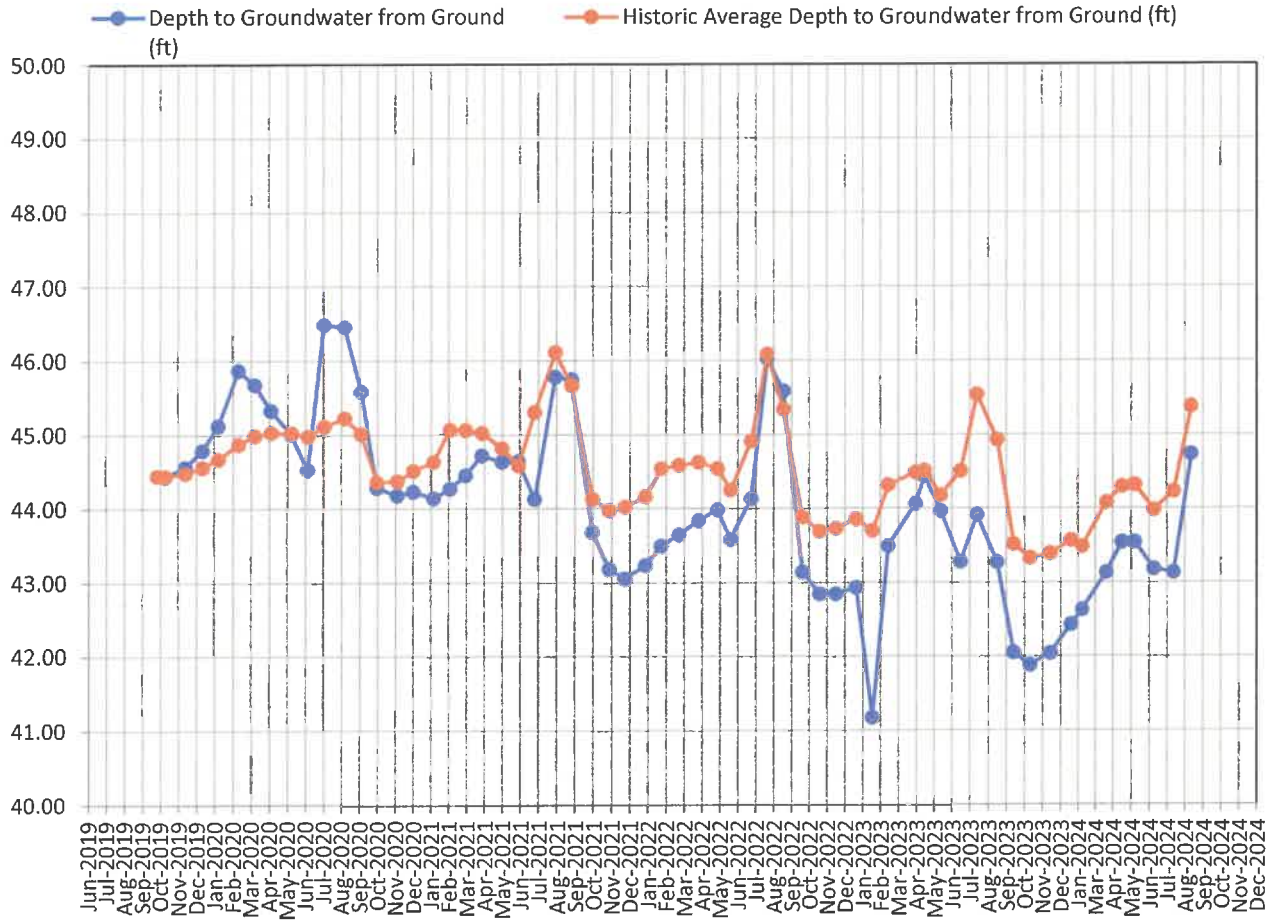
[www.agpros.com](http://www.agpros.com)



Well Designation	Hoffner #1 Dom		Hoffner #2 Irr	
Date	Depth to Groundwater from Ground (ft)	Trigger Level of 2 feet below Historic Average Level Met (Yes or No) Start in May 2020	Depth to Groundwater from Ground (ft)	Trigger Level of 2 feet below Historic Average Level Met (Yes or No) Start in May 2020
August 12, 2021	45.78	No		No
September 9, 2021	45.75	No	47.71	No
October 14, 2021	43.68	No	47.93	No
November 12, 2021	43.18	No	47.67	No
December 9, 2021	43.05	No	47.54	No
January 13, 2022	43.23	No	47.57	No
February 9, 2022	43.49	No	47.69	No
March 11, 2022	43.64	No	48.15	No
April 14, 2022	43.83	No	48.47	No
May 17, 2022	43.98	No	48.63	No
June 9, 2022	43.58	No	47.39	No
July 14, 2022	44.13	No		No
August 11, 2022	46.03	No		No
September 8, 2022	45.59	No		No
October 11, 2022	43.14	No	47.50	No
November 10, 2022	42.84	No	47.34	No
December 8, 2022	42.84	No	47.65	No
January 12, 2023	42.93	No	47.90	No
February 9, 2023	41.17	No	47.80	No
March 9, 2023	43.49	No	48.45	No
April 25, 2023	44.06	No	49.04	No
May 11, 2023	44.43	No	49.18	No
June 8, 2023	43.96	No	48.80	No
July 13, 2023	43.28	No		No
August 10, 2023	43.91	No		No
September 14, 2023	43.27	No	47.91	No
October 12, 2023	42.05	No	46.74	No
November 9, 2023	41.88	No	46.64	No
December 14, 2023	42.04	No	46.80	No
January 19, 2024	42.43	No	47.18	No
February 8, 2024	42.63	No	47.40	No
March 22, 2024	43.13	No	47.92	No
April 18, 2024	43.54	No	48.35	No
May 9, 2024	43.54	No	48.55	No
June 11, 2024	43.18	No	47.99	No
July 16, 2024	43.13	No	47.92	No
August 15, 2024	44.73	No		No



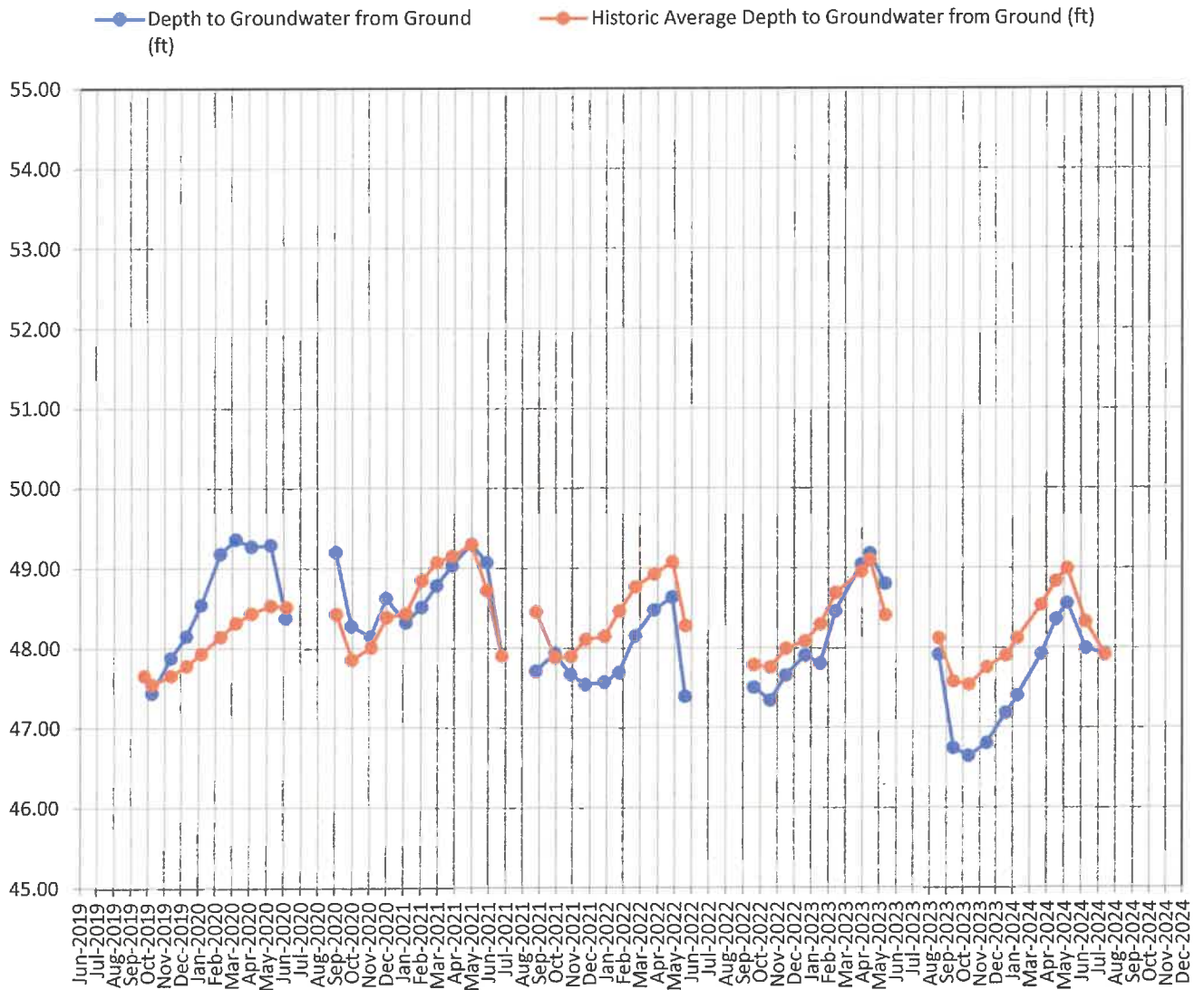
## HOFFNER #1 DOM



### Notes:

- 1) Graph displays Depth to Groundwater (lower depth to groundwater reading means higher water table elevation).
- 2) Trigger point is described in Settlement Agreement.
- 3) Since Historical Data was not established until September 2020, a year-to-date running average was used to compute historical average. As of September 2020, the historical average is computed as described in Settlement Agreement.

## HOFFNER #2 IRR



### Notes:

- 1) Graph displays Depth to Groundwater (lower depth to groundwater reading means higher water table elevation).
- 2) Trigger point is described in Settlement Agreement.
- 3) Since Historical Data was not established until September 2020, a year-to-date running average was used to compute historical average. As of September 2020, the historical average is computed as described in Settlement Agreement.

---

August 28, 2024

Jerry Winters  
49 Willowcroft Dr.  
Littleton, CO 80123

Dear Mr. Winters:

AGPROfessionals' staff have been monitoring groundwater elevations on behalf of W.W. Clyde & Co. at your property. We perform this monitoring on the second week of each month. Attached are the elevations we recorded on August 15, 2024.

Identifier	Depth to Water from Ground Surface (ft.)
Hoffner #1 Dom	44.73
Hoffner #2 Irr	NA

Has the 2-foot trigger point for two consecutive months been met?

☐ Yes

☒ No

Please find the attached tables and graphs representing the data collected to this date. Please do not hesitate to contact me regarding these activities.

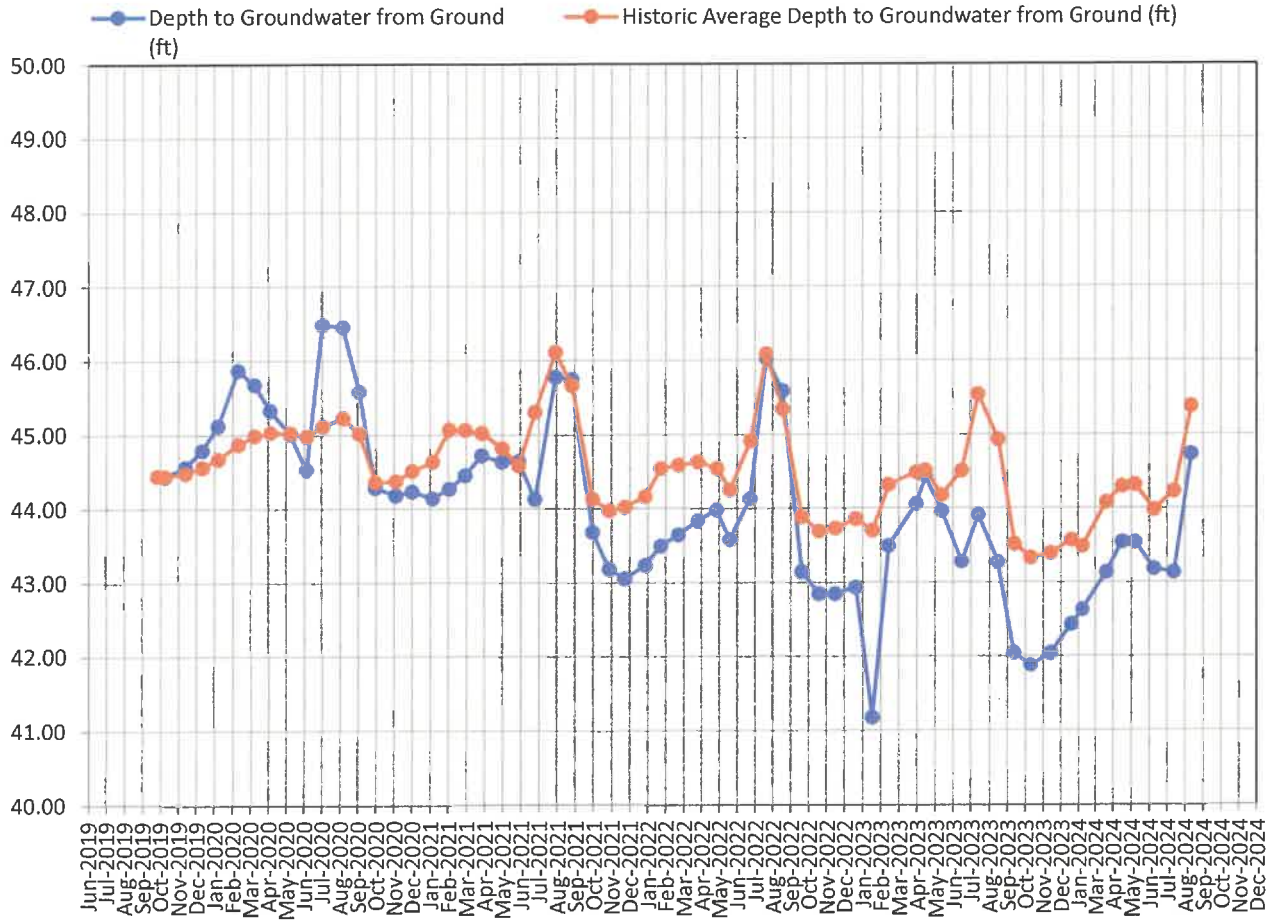
Sincerely,



Maria Irianni Renno, PhD.  
Sr. Environmental Engineer  
970-702-8946

Well Designation	Hoffner #1 Dom		Hoffner #2 Irr	
Date	Depth to Groundwater from Ground (ft)	Trigger Level of 2 feet below Historic Average Level Met (Yes or No) Start in May 2020	Depth to Groundwater from Ground (ft)	Trigger Level of 2 feet below Historic Average Level Met (Yes or No) Start in May 2020
August 12, 2021	45.78	No		No
September 9, 2021	45.75	No	47.71	No
October 14, 2021	43.68	No	47.93	No
November 12, 2021	43.18	No	47.67	No
December 9, 2021	43.05	No	47.54	No
January 13, 2022	43.23	No	47.57	No
February 9, 2022	43.49	No	47.69	No
March 11, 2022	43.64	No	48.15	No
April 14, 2022	43.83	No	48.47	No
May 17, 2022	43.98	No	48.63	No
June 9, 2022	43.58	No	47.39	No
July 14, 2022	44.13	No		No
August 11, 2022	46.03	No		No
September 8, 2022	45.59	No		No
October 11, 2022	43.14	No	47.50	No
November 10, 2022	42.84	No	47.34	No
December 8, 2022	42.84	No	47.65	No
January 12, 2023	42.93	No	47.90	No
February 9, 2023	41.17	No	47.80	No
March 9, 2023	43.49	No	48.45	No
April 25, 2023	44.06	No	49.04	No
May 11, 2023	44.43	No	49.18	No
June 8, 2023	43.96	No	48.80	No
July 13, 2023	43.28	No		No
August 10, 2023	43.91	No		No
September 14, 2023	43.27	No	47.91	No
October 12, 2023	42.05	No	46.74	No
November 9, 2023	41.88	No	46.64	No
December 14, 2023	42.04	No	46.80	No
January 19, 2024	42.43	No	47.18	No
February 8, 2024	42.63	No	47.40	No
March 22, 2024	43.13	No	47.92	No
April 18, 2024	43.54	No	48.35	No
May 9, 2024	43.54	No	48.55	No
June 11, 2024	43.18	No	47.99	No
July 16, 2024	43.13	No	47.92	No
August 15, 2024	44.73	No		No

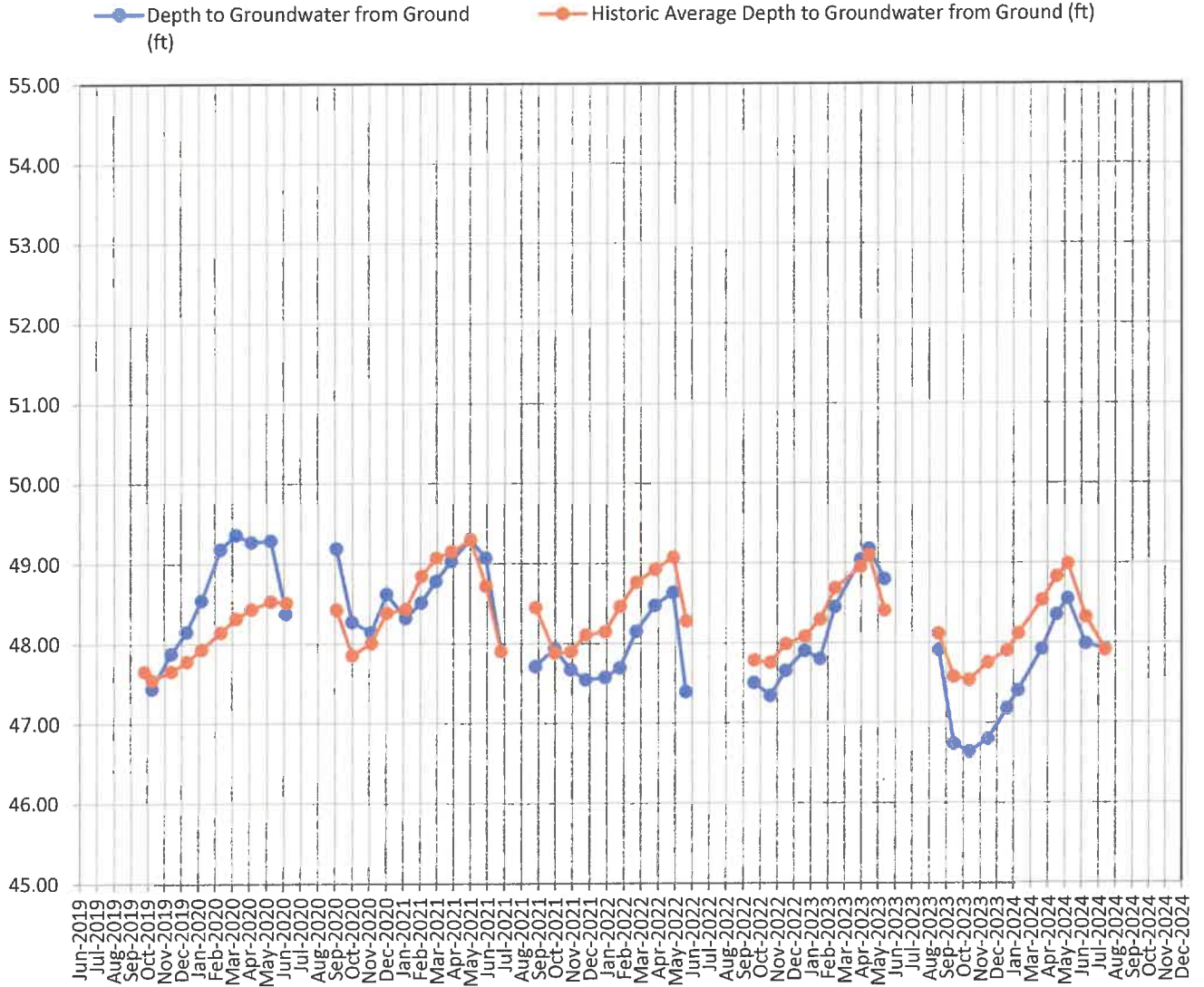
## HOFFNER #1 DOM



### Notes:

- 1) Graph displays Depth to Groundwater (lower depth to groundwater reading means higher water table elevation).
- 2) Trigger point is described in Settlement Agreement.
- 3) Since Historical Data was not established until September 2020, a year-to-date running average was used to compute historical average. As of September 2020, the historical average is computed as described in Settlement Agreement.

## HOFFNER #2 IRR



### Notes:

- 1) Graph displays Depth to Groundwater (lower depth to groundwater reading means higher water table elevation).
- 2) Trigger point is described in Settlement Agreement.
- 3) Since Historical Data was not established until September 2020, a year-to-date running average was used to compute historical average. As of September 2020, the historical average is computed as described in Settlement Agreement.



---

August 28, 2024

Janet Brown  
443 N Brisbane Ave.  
Greeley, CO 80634

Dear Ms. Brown:

AGPROfessionals' staff have been monitoring groundwater elevations on behalf of W.W. Clyde & Co. at your property. We perform this monitoring on the second week of each month. Attached are the elevations we recorded on August 15, 2024.

Identifier	Depth to Water from Ground Surface (ft.)
Koehler #1 Dom (Vault)	48.17
Koehler #2 Stock (Vault)	47.22
Koehler #3 Irr	50.95

Has the 2-foot trigger point for two consecutive months been met?

☐ Yes

☒ No

Please find the attached tables and graphs representing the data collected to this date. Please do not hesitate to contact me regarding these activities.

Sincerely,

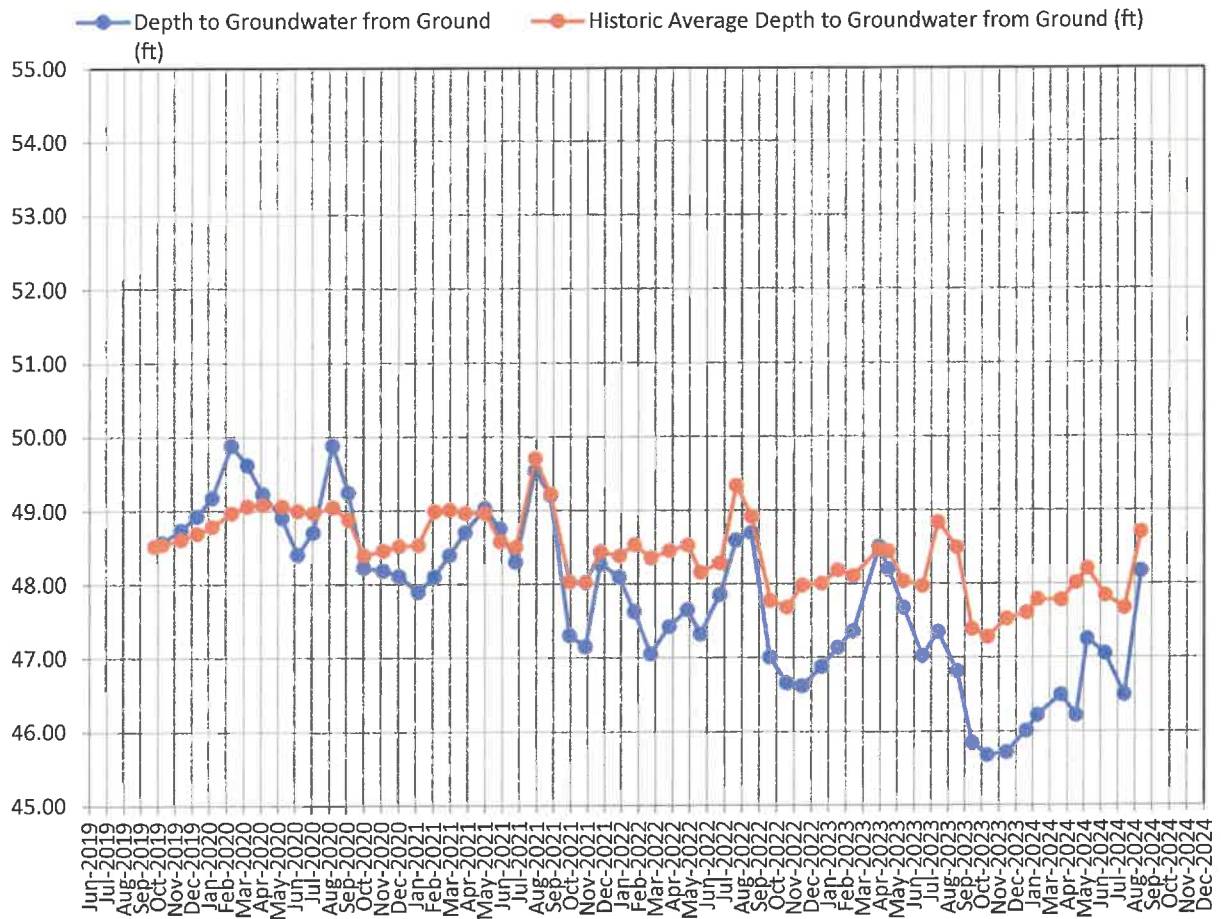


Maria Irianni Renno, PhD.  
Sr. Environmental Engineer  
970-702-8946

Well Designation	Koehler #1 Dom (Vault)		Koehler #2 Stock (Vault)		Koehler #3 Irr	
Date	Depth to Groundwater from Ground (ft)	Trigger Level of 2 feet below Historic Average Level Met (Yes or No) Start in May 2020	Depth to Groundwater from Ground (ft)	Trigger Level of 2 feet below Historic Average Level Met (Yes or No) Start in May 2020	Depth to Groundwater from Ground (ft)	Trigger Level of 2 feet below Historic Average Level Met (Yes or No) Start in May 2020
August 12, 2021	49.53	No	48.21	No		No
September 9, 2021	49.20	No	48.06	No	50.12	No
October 14, 2021	47.30	No	46.33	No	50.15	No
November 12, 2021	47.15	No	46.98	No	50.10	No
December 9, 2021	48.27	No	47.41	No	49.92	No
January 13, 2022	48.09	No	47.57	No	50.13	No
February 9, 2022	47.62	No	47.27	No	50.08	No
March 11, 2022	47.05	No	45.94	No	49.44	No
April 14, 2022	47.42	No	46.39	No	49.85	No
May 17, 2022	47.65	No	46.73	No		No
June 9, 2022	47.32	No	46.49	No	49.59	No
July 14, 2022	47.85	No	47.10	No		No
August 11, 2022	48.59	No	47.70	No	50.70	No
September 8, 2022	48.69	No	48.04	No	51.48	No
October 11, 2022	47.00	No	44.49	No	49.06	No
November 10, 2022	46.65	No	45.69	No	48.80	No
December 8, 2022	46.61	No	45.49	No	48.89	No
January 12, 2023	46.87	No	45.98	No	49.03	No
February 9, 2023	47.13	No	46.15	No	49.95	No
March 9, 2023	47.35	No	48.49	No	49.78	No
April 25, 2023	48.50	No	47.02	No	50.44	No
May 11, 2023	48.19	No	47.24	No	50.69	No
June 8, 2023	47.67	No	46.51	No	50.07	No
July 13, 2023	47.02	No	45.89	No		No
August 10, 2023	47.34	No	46.24	No	50.50	No
September 14, 2023	46.81	No	45.69	No	49.15	No
October 12, 2023	45.84	No	44.65	No	48.19	No
November 9, 2023	45.67	No	44.47	No	48.05	No
December 14, 2023	45.71	No	44.54	No	48.08	No
January 19, 2024	46.00	No	45.27	No	48.38	No
February 8, 2024	46.21	No	46.28	No	48.61	No
March 22, 2024	46.49	No	45.64	No	49.25	No
April 18, 2024	46.21	No	46.18	No	49.71	No
May 9, 2024	47.25	No	46.30	No	49.89	No
June 11, 2024	47.05	No	45.86	No		No
July 16, 2024	46.49	No	45.64	No	49.25	No
August 15, 2024	48.17	No	47.22	No	50.95	No



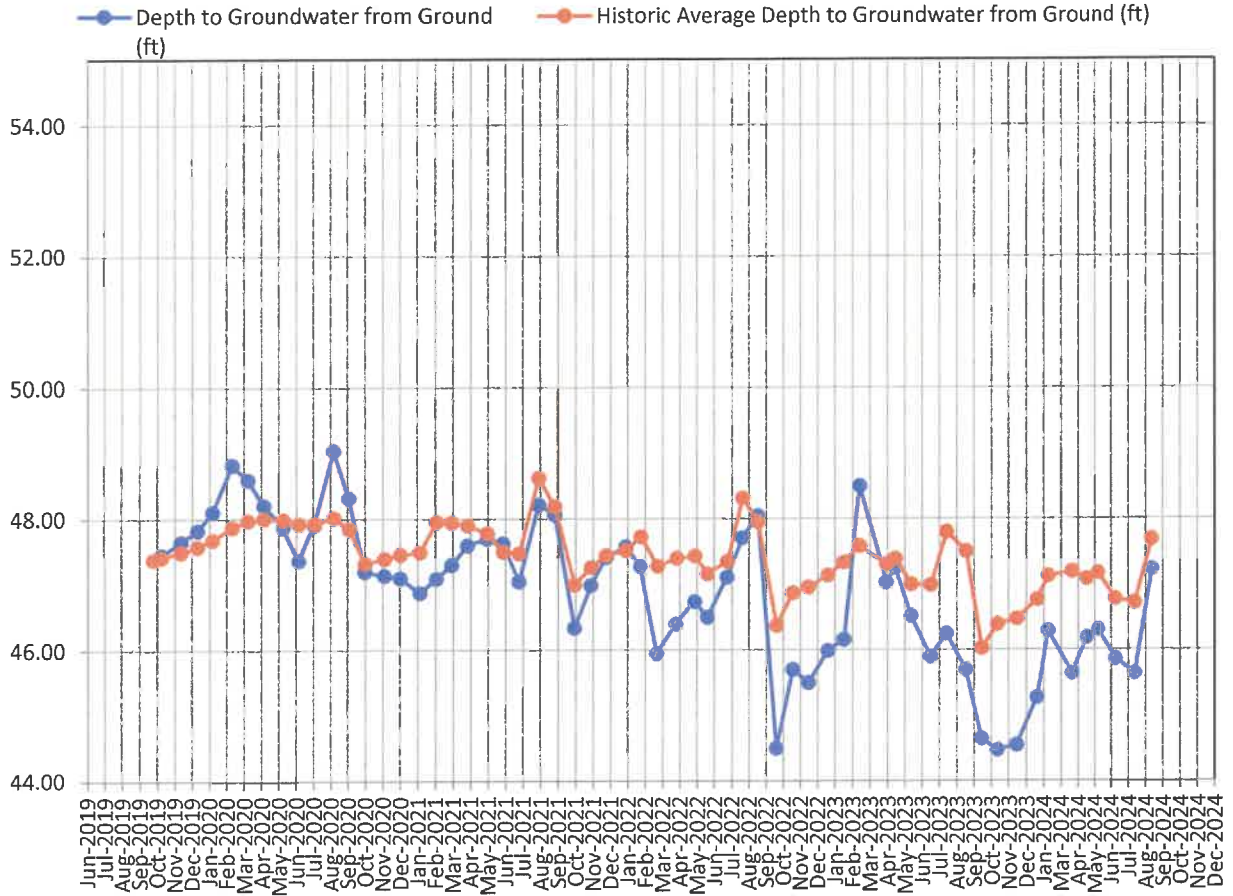
## KOEHLER #1 DOM (VAULT)



### Notes:

- 1) Graph displays Depth to Groundwater (lower depth to groundwater reading means higher water table elevation).
- 2) Trigger point is described in Settlement Agreement.
- 3) Since Historical Data was not established until September 2020, a year-to-date running average was used to compute historical average. As of September 2020, the historical average is computed as described in Settlement Agreement.

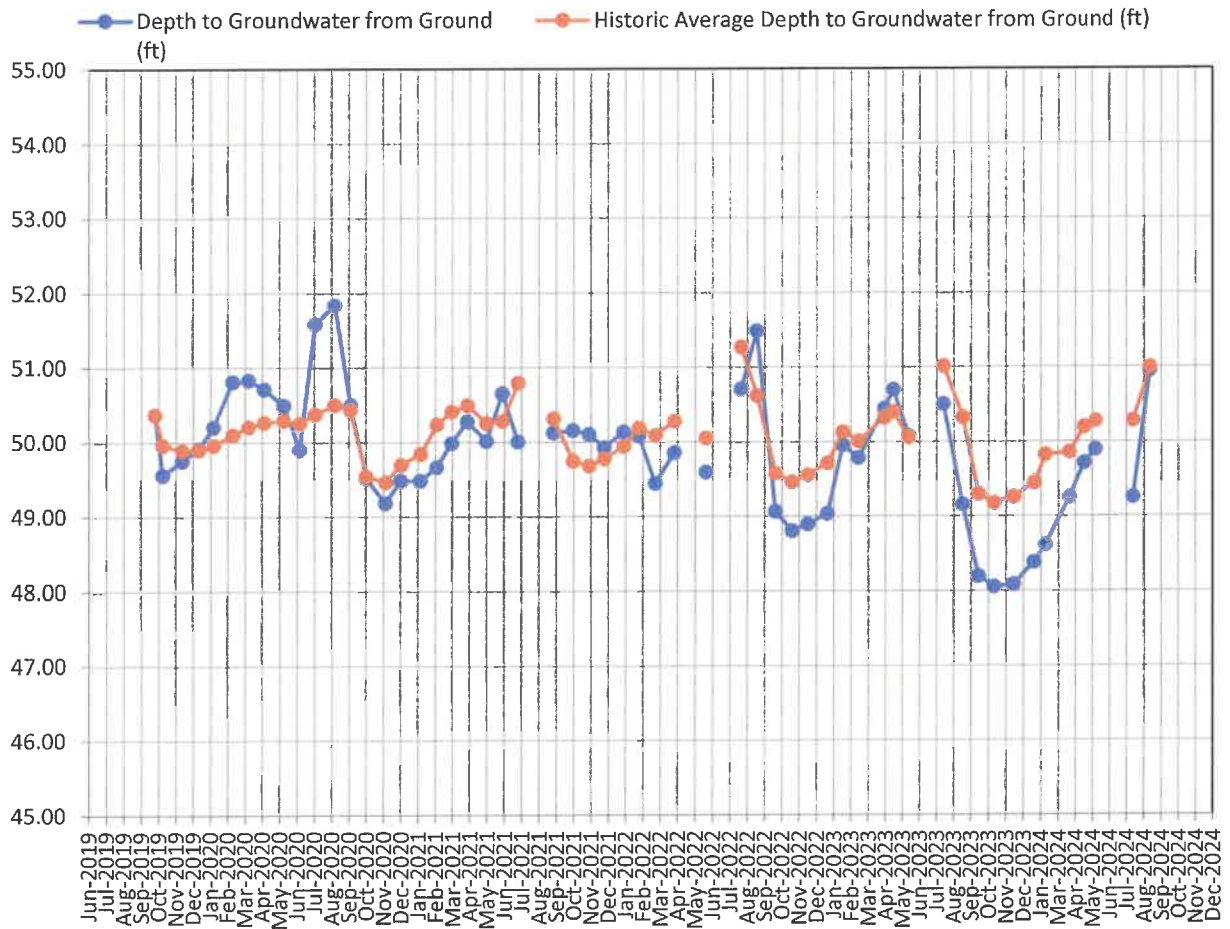
## KOEHLER #2 STOCK (VAULT)



### Notes:

- 1) Graph displays Depth to Groundwater (lower depth to groundwater reading means higher water table elevation).
- 2) Trigger point is described in Settlement Agreement.
- 3) Since Historical Data was not established until September 2020, a year-to-date running average was used to compute historical average. As of September 2020, the historical average is computed as described in Settlement Agreement.

### KOEHLER #3 IRR



#### Notes:

- 1) Graph displays Depth to Groundwater (lower depth to groundwater reading means higher water table elevation).
- 2) Trigger point is described in Settlement Agreement.
- 3) Since Historical Data was not established until September 2020, a year-to-date running average was used to compute historical average. As of September 2020, the historical average is computed as described in Settlement Agreement.

---

August 28, 2024

Mr. Brian Murata  
29485 WCR 43  
Greeley, CO 80631

Dear Mr. Murata:

AGPROfessionals' staff have been monitoring groundwater elevations on behalf of W.W. Clyde & Co. at your property. We perform this monitoring on the second week of each month. Attached is the elevation we recorded on August 15, 2024.

Identifier	Depth to Water from Ground Surface (ft.)
Murata #1 Irr	46.09

Has the 2-foot trigger point for two consecutive months been met?

☐ Yes

☒ No

Please find the attached table and graph representing the data collected to this date. Please do not hesitate to contact me regarding these activities.

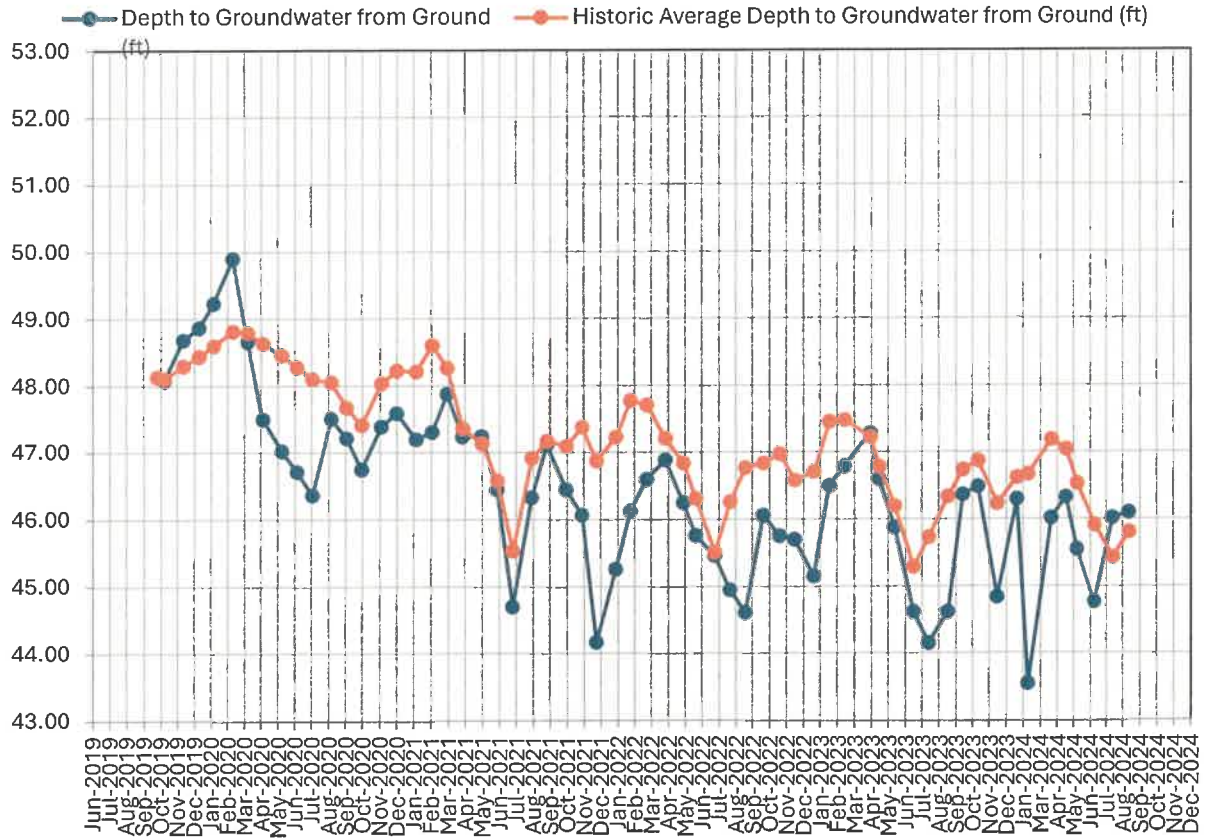
Sincerely,



Maria Irianni Renno, PhD.  
Sr. Environmental Engineer  
970-702-8946

Well Designation		Murata #1 Irr
Date	Depth to Groundwater from Ground (ft)	Trigger Level of 2 feet below Historic Average Level Met (Yes or No) Start in May 2020
August 12, 2021	46.32	No
September 9, 2021	47.11	No
October 14, 2021	46.44	No
November 12, 2021	46.06	No
December 9, 2021	44.16	No
January 13, 2022	45.25	No
February 9, 2022	46.11	No
March 11, 2022	46.59	No
April 14, 2022	46.88	No
May 17, 2022	46.24	No
June 9, 2022	45.75	No
July 14, 2022	45.45	No
August 11, 2022	44.94	No
September 8, 2022	44.60	No
October 11, 2022	46.05	No
November 10, 2022	45.74	No
December 8, 2022	45.69	No
January 12, 2023	45.14	No
February 9, 2023	46.49	No
March 9, 2023	46.78	No
April 25, 2023	47.27	No
May 11, 2023	46.59	No
June 8, 2023	45.87	No
July 13, 2023	44.61	No
August 10, 2023	44.14	No
September 14, 2023	44.61	No
October 12, 2023	46.36	No
November 9, 2023	46.48	No
December 14, 2023	44.83	No
January 19, 2024	46.29	No
February 8, 2024	43.54	No
March 22, 2024	46.01	No
April 18, 2024	46.32	No
May 9, 2024	45.54	No
June 11, 2024	44.76	No
July 16, 2024	46.01	No
August 15, 2024	46.09	No

## MURATA #1 IRR



### Notes:

- 1) Graph displays Depth to Groundwater (lower depth to groundwater reading means higher water table elevation).
- 2) Trigger point is described in Settlement Agreement.
- 3) Since Historical Data was not established until September 2020, a year-to-date running average was used to compute historical average. As of September 2020, the historical average is computed as described in Settlement Agreement.

---

August 28, 2024

Ms. Silvia Parker  
211 Balsam Ave.  
Greeley, CO 80631

Dear Ms. Parker:

AGPROfessionals' staff have been monitoring groundwater elevations on behalf of W.W. Clyde & Co. at your property. We perform this monitoring on the second Thursday of each month. Attached is the elevation we recorded on August 15, 2024.

Identifier	Depth to Water from Ground Surface (Ft.)
Parker Dom (Vault)	39.36

Has the 2-foot trigger point for two consecutive months been met?

☐ Yes

☒ No

Please find the attached table and graph representing the data collected to this date. Please do not hesitate to contact me regarding these activities.

Sincerely,



Maria Irianni Renno, PhD.  
Sr. Environmental Engineer  
970-702-8946

**ENGINEERING, PLANNING, CONSULTING & REAL ESTATE**

**HQ & Mailing:** 3050 67<sup>th</sup> Avenue, Suite 200, Greeley, CO 80634 | 970.535.9318 office | 970.535.9854 fax

**Idaho:** 213 Canyon Crest Drive, Suite 100, Twin Falls, ID 83301 | 208.595.5301

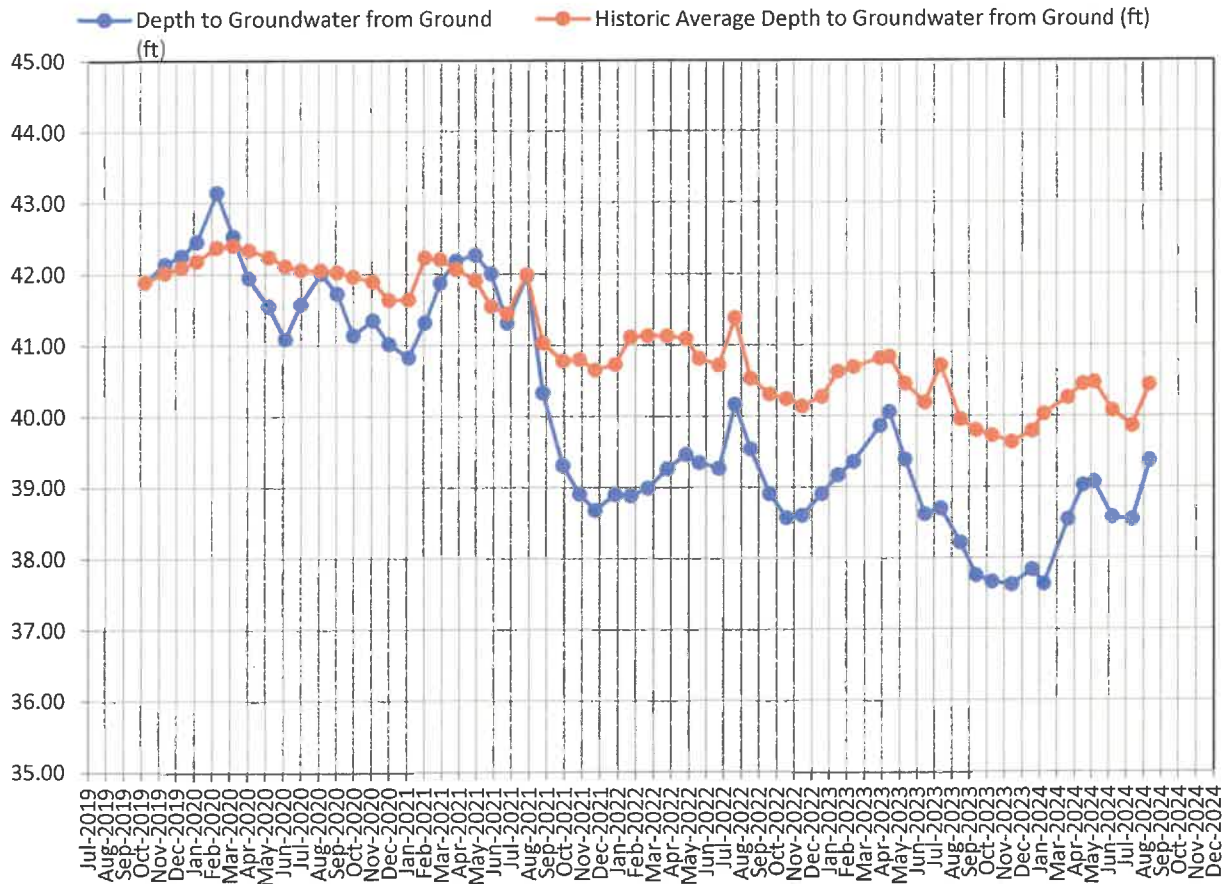
[www.agpros.com](http://www.agpros.com)



Well Designation		Parker Dom
Date	Depth to Groundwater from Ground (ft)	Trigger Level of 2 feet below Historic Average Level Met (Yes or No) Start in May 2020
August 12, 2021	41.97	No
September 9, 2021	40.32	No
October 14, 2021	39.30	No
November 12, 2021	38.90	No
December 9, 2021	38.67	No
January 13, 2022	38.89	No
February 9, 2022	38.87	No
March 11, 2022	38.98	No
April 14, 2022	39.25	No
May 17, 2022	39.45	No
June 9, 2022	39.34	No
July 14, 2022	39.26	No
August 11, 2022	40.16	No
September 8, 2022	39.53	No
October 11, 2022	38.90	No
November 10, 2022	38.56	No
December 8, 2022	38.59	No
January 12, 2023	38.90	No
February 9, 2023	39.16	No
March 9, 2023	39.35	No
April 25, 2023	39.85	No
May 11, 2023	40.05	No
June 8, 2023	39.38	No
July 13, 2023	38.61	No
August 10, 2023	38.69	No
September 14, 2023	38.21	No
October 12, 2023	37.75	No
November 9, 2023	37.66	No
December 14, 2023	37.62	No
January 19, 2024	37.83	No
February 8, 2024	37.63	No
March 22, 2024	38.54	No
April 18, 2024	39.02	No
May 9, 2024	39.06	No
June 11, 2024	38.57	No
July 16, 2024	38.54	No
August 15, 2024	39.36	No



## PARKER DOM

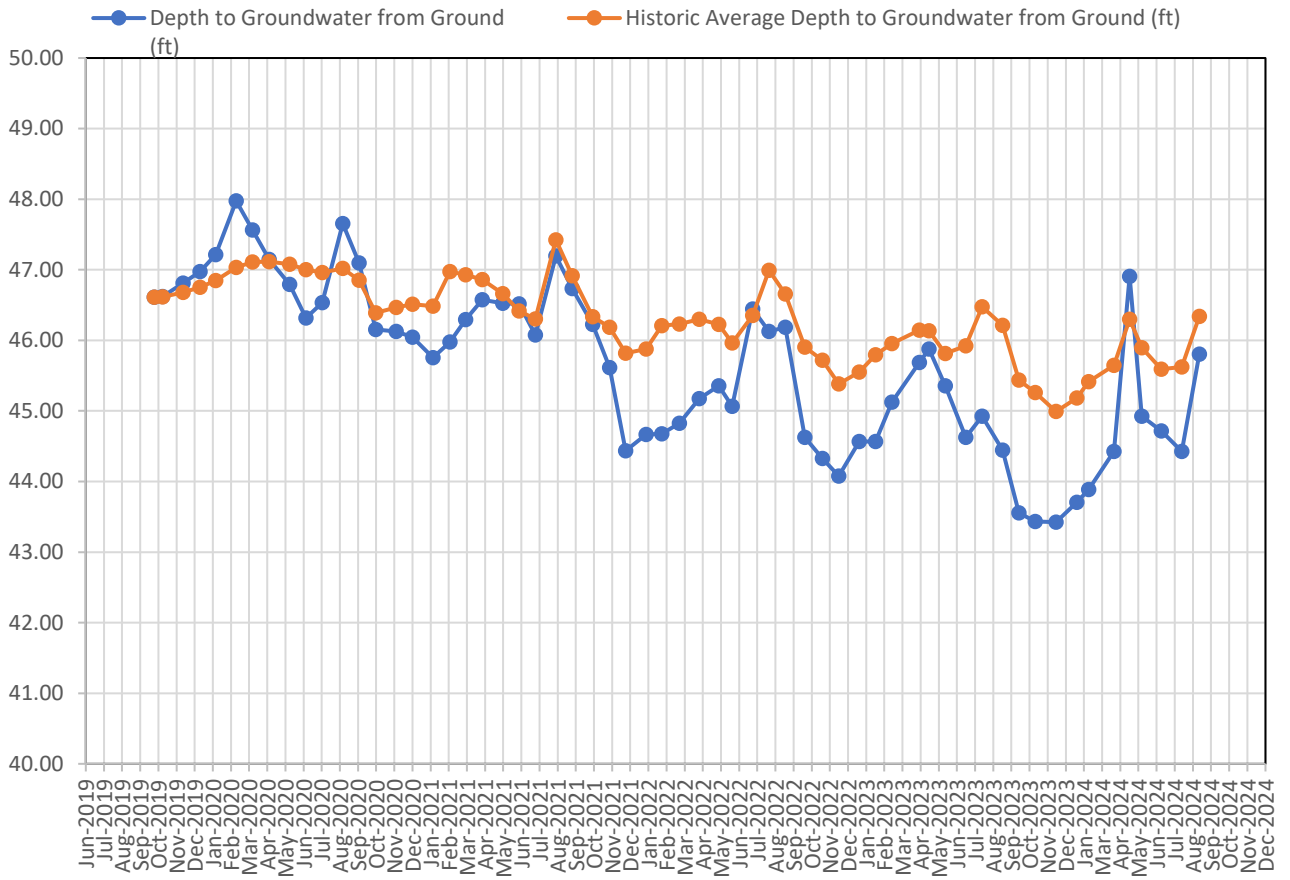


### Notes:

- 1) Graph displays Depth to Groundwater (lower depth to groundwater reading means higher water table elevation).
- 2) Trigger point is described in Settlement Agreement.
- 3) Since Historical Data was not established until September 2020, a year-to-date running average was used to compute historical average. As of September 2020, the historical average is computed as described in Settlement Agreement.

Well Designation		Global Assets Davis Irr
Date	Depth to Groundwater from Ground (ft)	Trigger Level of 2 feet below Historic Average Level Met (Yes or No) Start in May 2020
August 12, 2021	47.20	No
September 9, 2021	46.74	No
October 14, 2021	46.23	No
November 12, 2021	45.62	No
December 9, 2021	44.44	No
January 13, 2022	44.67	No
February 9, 2022	44.68	No
March 11, 2022	44.83	No
April 14, 2022	45.18	No
May 17, 2022	45.36	No
June 9, 2022	45.07	No
July 14, 2022	46.45	No
August 11, 2022	46.13	No
September 8, 2022	46.19	No
October 11, 2022	44.63	No
November 10, 2022	44.33	No
December 8, 2022	44.08	No
January 12, 2023	44.57	No
February 9, 2023	44.57	No
March 9, 2023	45.13	No
April 25, 2023	45.69	No
May 11, 2023	45.88	No
June 8, 2023	45.36	No
July 13, 2023	44.63	No
August 10, 2023	44.93	No
September 14, 2023	44.45	No
October 12, 2023	43.56	No
November 9, 2023	43.44	No
December 14, 2023	43.43	No
January 19, 2024	43.71	No
February 8, 2024	43.89	No
March 22, 2024	44.43	No
April 18, 2024	46.91	No
May 9, 2024	44.93	No
June 11, 2024	44.72	No
July 16, 2024	44.43	No
August 15, 2024	45.81	No

## GLOBAL ASSET RECOVERY DAVIS IRR



### Notes:

- 1) Graph displays Depth to Groundwater (lower depth to groundwater reading means higher water table elevation).
- 2) Trigger point is described in Settlement Agreement.
- 3) Since Historical Data was not established until September 2020, a year-to-date running average was used to compute historical average. As of September 2020, the historical average is computed as described in Settlement Agreement.