

**Sent by Email**

July 30, 2024

Mr. Dustin Czapla, Environmental Protection Specialist  
Colorado Division of Reclamation, Mining and Safety  
1313 Sherman St., Rm. 215  
Denver, CO 80203

**Re: Climax ETDL EPF Leak – Climax Mine Permit No. M-1977-493**

Dear Mr. Czapla:

Climax is providing this 5-day follow-up written notice pursuant to Rule 8.2.3 of the DRMS Rules and Regulations for Hard Rock, Metal, and Designated Mining Operations. On Wednesday, July 24, 2024, at approximately 1:10 pm, leaks on the ETDL were found at Climax Mine, which is considered as a potential failure or imminent failure of an Environmental Protection Facility (EPF) pursuant to Rule 8.1(b). Climax contacted and spoke with Environmental Protection Specialist Dustin Czapla at approximately 3:50 pm on July 24, 2024, in accordance with Rule 8.2.1(a).

Description of Incident

At approximately 1:10 pm on July 24, 2024, a leak was discovered along the ETDL. After the discovery, Climax employees inspected the remainder of the concrete portion of the line and discovered a total of five locations with leaks. The maximum single flow of these five locations was approximately 10 gallons per minute. Leaks from the ETDL flowed into the East Side Channel that runs parallel to the ETDL. The East Side Channel also is an EPF described in the Climax EPP (Section T-5.3.2) as follows: "This channel collects seepage and run-off from the Camp/Mill area and serves as a secondary containment for potential releases from the TDL and ETDL pipelines." Like the ETDL, the East Side Channel conveys mine drainage to the Climax process water/water treatment system. Given the redundancy provided by the ETDL/East Side Channel, there was no release of water outside of the process water containment system. Leak locations are depicted on attached Maps 1 and 2.

Upon recognizing the pipeline condition, Climax turned off the pumps located at 5-Shaft as well as the pit dewatering system, which contribute to ETDL flow. The pumps remained off until repairs were completed. Climax utilized a systematic and gradual flow increase to ensure no further leaks.

Required Information under Rule 8.2.3, paragraphs (a) through (e):

- (a) actions taken to respond to and correct the emergency situation or condition;

*Climax Response: Climax turned off the pumps located at 5-Shaft as well as the pit dewatering system, which contribute to ETDL flow. The pumps remained off until repairs were completed. Climax utilized a systematic and gradual flow increase to ensure no further leaks.*

- (b) any known or anticipated adverse impacts to human health, property or the environment;

*Climax Response: As described above, all leakage flowed into the East Side Channel which*

*provides secondary containment to the TDL and ETDL pipelines, and no water escaped the permitted process water containment systems.*

- (c) name(s), address(s), telephone numbers and e-mail address of the Operator's contact person for additional information and follow-up by the Office;

*Climax Response: Eric Detmer, Environmental Manager – [edetmer@fmi.com](mailto:edetmer@fmi.com), 719-427-0070  
Climax Mine  
Fremont Pass-Highway 91  
Climax, CO 80429*

- (d) monitoring and analyses that are necessary to evaluate the situation and corrective actions, copies of all pertinent data; and

*Climax Response: There are no monitoring or analyses necessary to evaluate the situation.*

- (e) results of the Operator's investigation to assess the conditions or circumstances that created the emergency situation, and what corrective or protective measures will be taken to prevent a similar event from occurring in the future.

*Climax Response: Climax does not interpret this event as an emergency situation due to the duration of the release and repair.*

Please feel free to contact me at (719) 427-0070 or at [edetmer@fmi.com](mailto:edetmer@fmi.com) if you need any further information regarding this matter. Thank you for your continued assistance with Climax Mine.

Sincerely,



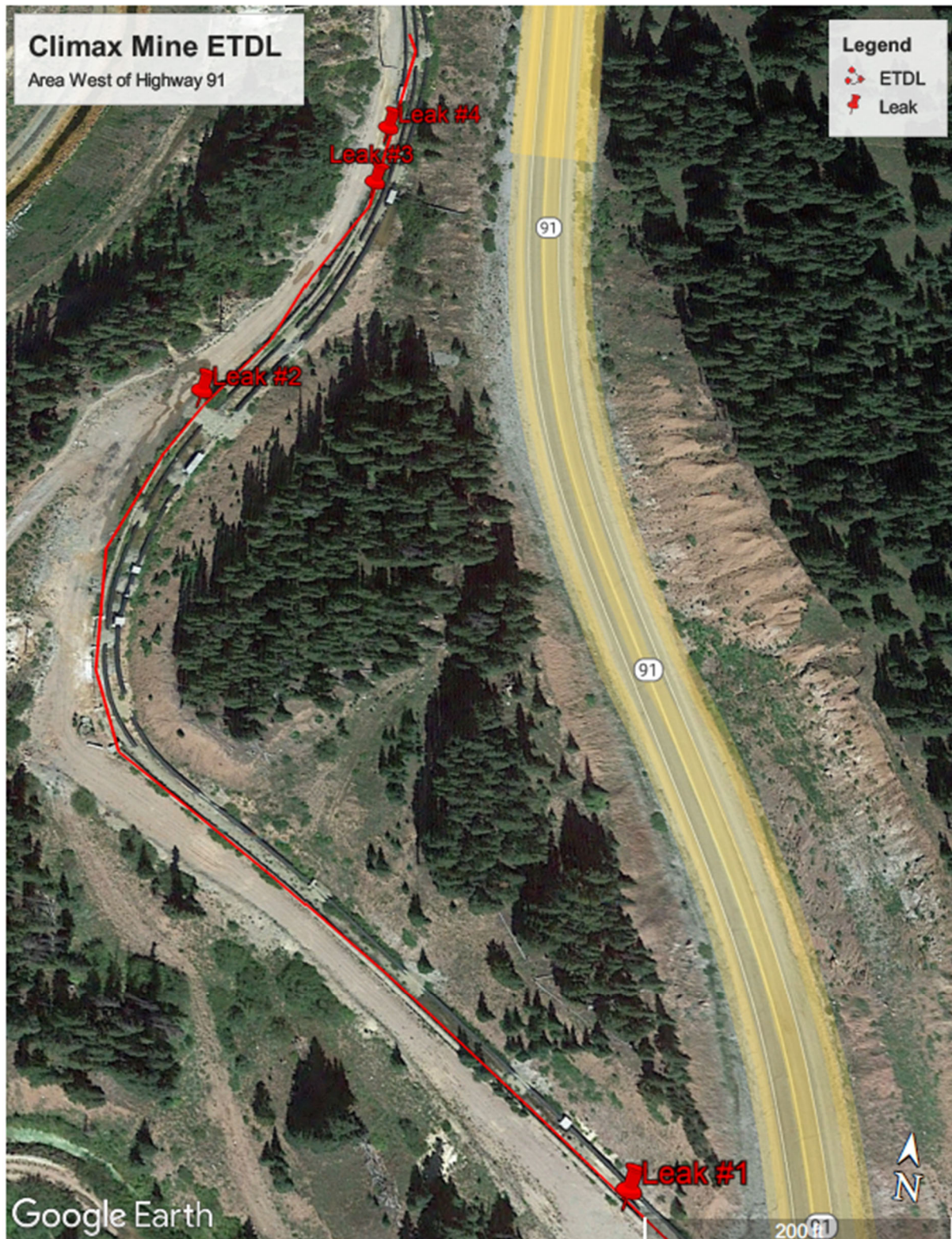
Eric Detmer, P.E.  
Environmental Manager

Attachment

## **Attachments – Maps 1 and 2**



Map 1





Map 2

