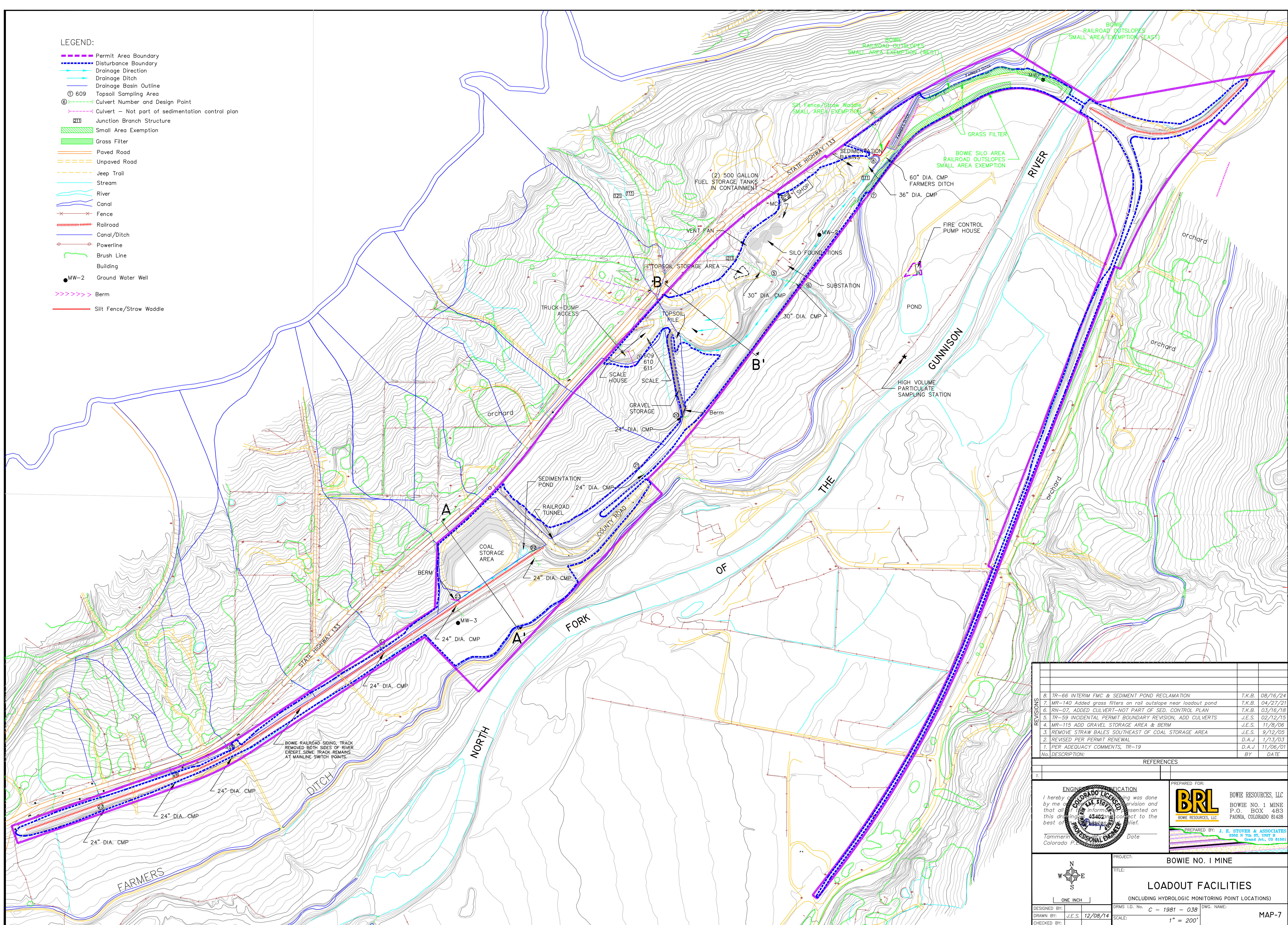


- LEGEND:
- Permit Area Boundary
 - Disturbance Boundary
 - Drainage Direction
 - Drainage Ditch
 - Drainage Basin Outline
 - ① 609 Topsoil Sampling Area
 - ⑥ Culvert Number and Design Point
 - Culvert - Not part of sedimentation control plan
 - Junction Branch Structure
 - Small Area Exemption
 - Grass Filter
 - Paved Road
 - Unpaved Road
 - Jeep Trail
 - Stream
 - River
 - Canal
 - Fence
 - Railroad
 - Canal/Ditch
 - Powerline
 - Brush Line
 - Building
 - MW-2 Ground Water Well
 - Berm
 - Silt Fence/Straw Waddle



REVISIONS			
8.	TR-66 INTERIM FMC & SEDIMENT POND RECLAMATION	T.K.B.	08/16/24
7.	MR-140 Added grass filters on rail outlope near loadout pond	T.K.B.	04/27/21
6.	RN-07, ADDED CULVERT-NOT PART OF SED. CONTROL PLAN	T.K.B.	03/16/18
5.	TR-59 INCIDENTAL PERMIT BOUNDARY REVISION, ADD CULVERTS	J.E.S.	02/12/15
4.	MR-115 ADD GRAVEL STORAGE AREA & BERM	J.E.S.	11/8/08
3.	REMOVE STRAW BALES SOUTHEAST OF COAL STORAGE AREA	J.E.S.	9/12/05
2.	REVISED PER PERMIT RENEWAL	D.A.J.	1/13/03
1.	PER ADEQUACY COMMENTS, TR-19	D.A.J.	11/06/01
No. DESCRIPTION:		BY	DATE
REFERENCES			
1.			
ENGINEER'S CERTIFICATION		PREPARED FOR:	
I hereby certify that the engineering was done by me or under my direct supervision and that all information presented on this drawing is true and correct to the best of my knowledge and belief.		BOWIE RESOURCES, LLC	
Tannerin Colorado P.E.		BOWIE NO. 1 MINE P.O. BOX 483 PAONIA, COLORADO 81428	
Date		PREPARED BY: J. E. STOVER & ASSOCIATES	
		2358 N 7th St, UNIT 8 Grand Jct., CO 81501	
PROJECT:		BOWIE NO. 1 MINE	
TITLE:		LOADOUT FACILITIES	
(INCLUDING HYDROLOGIC MONITORING POINT LOCATIONS)			
DESIGNED BY:	DRMS I.D. No. C - 1981 - 038	DWG. NAME:	
DRAWN BY: J.E.S.	12/08/14	SCALE: 1" = 200'	
CHECKED BY:		MAP-7	