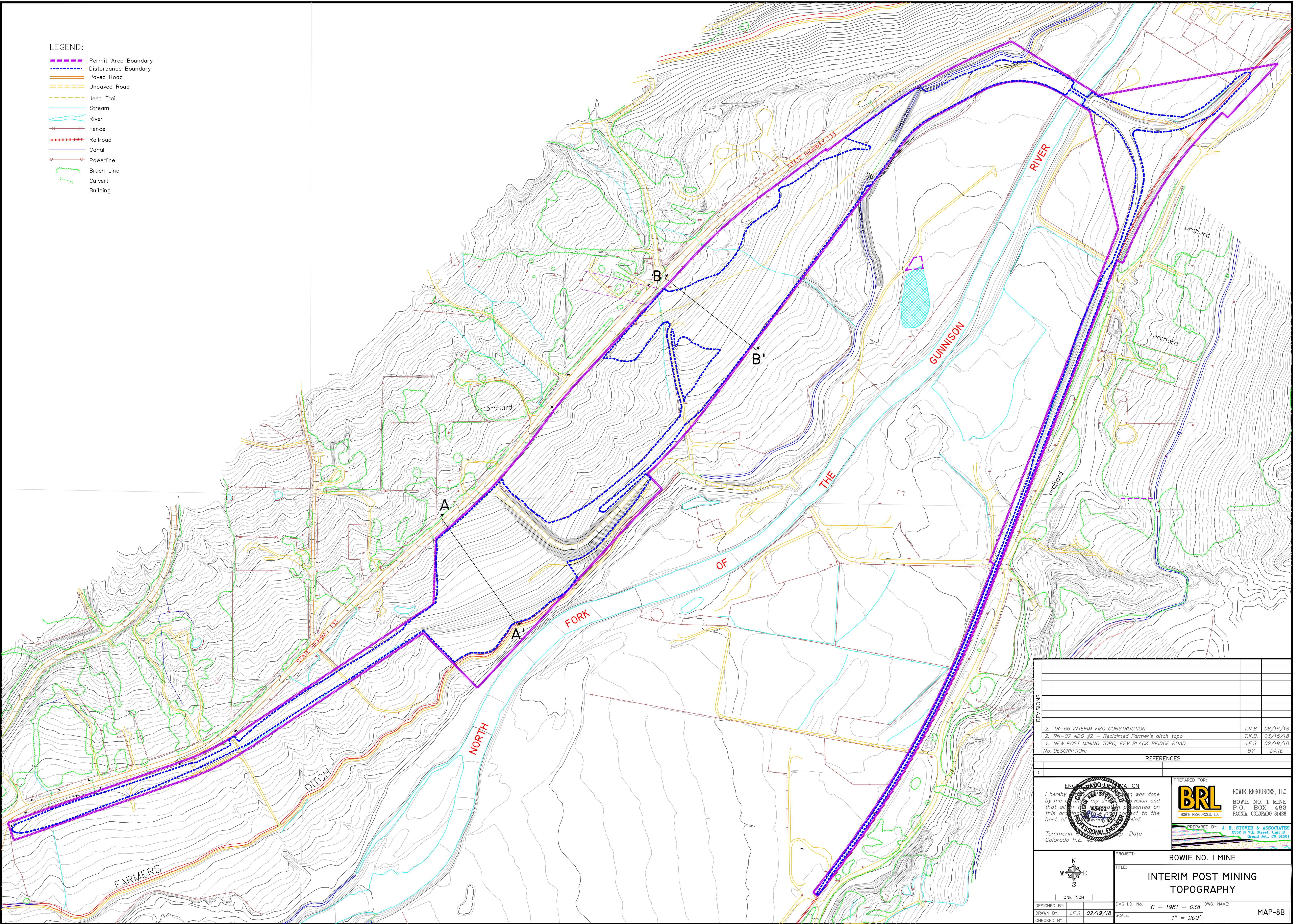


LEGEND:

- Permit Area Boundary
- Disturbance Boundary
- Paved Road
- Unpaved Road
- Jeep Trail
- Stream
- River
- Fence
- Railroad
- Canal
- Powerline
- Brush Line
- Culvert
- Building



| REVISIONS |  |
|-----------|--|
| No.       | DESCRIPTION                                  |
| 2.        | TR-66 INTERIM FMC CONSTRUCTION               |
| 2.        | RN-07 ADQ #2 - Reclaimed Farmer's ditch topo |
| 1.        | NEW POST MINING TOPO, REV BLACK BRIDGE ROAD  |

| BY     | DATE     |
|--------|----------|
| T.K.B. | 08/16/18 |
| T.K.B. | 03/15/18 |
| J.E.S. | 02/19/18 |

| REFERENCES |             |
|------------|-------------|
| No.        | DESCRIPTION |
| 1.         |             |

ENGINEER'S CERTIFICATION

I hereby certify that the work was done by me or under my direct supervision and that all of the data presented on this drawing is true and correct to the best of my knowledge and belief.

Tamara J. Stover, P.E. Date

Colorado P.E. No. 145402

PREPARED FOR:

**BRL** BOWIE RESOURCES, LLC  
BOWIE NO. 1 MINE  
P.O. BOX 483  
PAONIA, COLORADO 81428

PREPARED BY: J. R. STOVER & ASSOCIATES  
2836 N 7th Street, Unit 10  
Grand Jet., CO 81501

| PROJECT:                       |                |            |
|--------------------------------|----------------|------------|
| BOWIE NO. 1 MINE               |                |            |
| TITLE:                         |                |            |
| INTERIM POST MINING TOPOGRAPHY |                |            |
| DESIGNED BY:                   | DWG. I.D. No.  | DWG. NAME: |
| J.E.S.                         | C - 1981 - 038 |            |
| CHECKED BY:                    | SCALE:         |            |
|                                | 1" = 200'      |            |