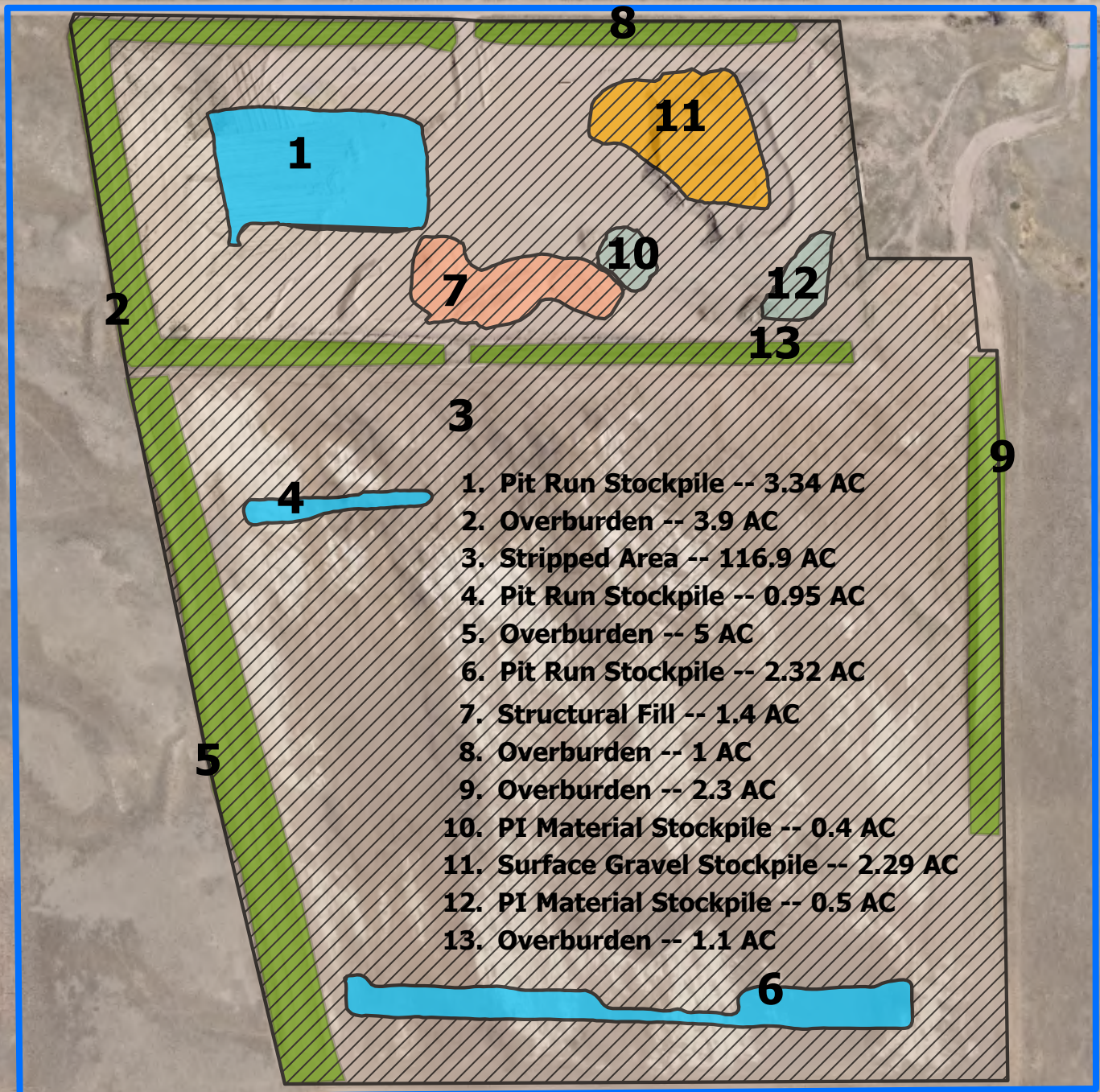







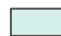

Koskie Pit M2014-024

2024 Annual Report



Mining Inventory

-  Pit Run Stockpile
-  Stripped Area
-  Structural Fill

-  Surface Gravel Stockpile
-  Overburden
-  PI Material Stockpile
-  Permit Boundary

Disclaimer

This product has been developed solely for internal use only by Weld County. The GIS database, applications, and data in the product is subject to constant change and the accuracy and completeness cannot be and is not guaranteed. The designation of lots or parcels or land uses in the database does not imply that the lots or parcels were legally created or that the land uses comply with applicable State or Local law. UNDER NO CIRCUMSTANCE SHALL ANY PART OF THE PRODUCT BE USED FOR FINAL DESIGN PURPOSES. WELD COUNTY MAKES NO WARRANTIES OR GUARANTEES, EITHER EXPRESSED OR IMPLIED AS TO THE COMPLETENESS, ACCURACY, OR CORRECTNESS OF SUCH PRODUCT, NOR ACCEPTS ANY LIABILITY, ARISING FROM ANY INCORRECT, INCOMPLETE OR MISLEADING INFORMATION CONTAINED THEREIN.



0 500 1,000 Feet

