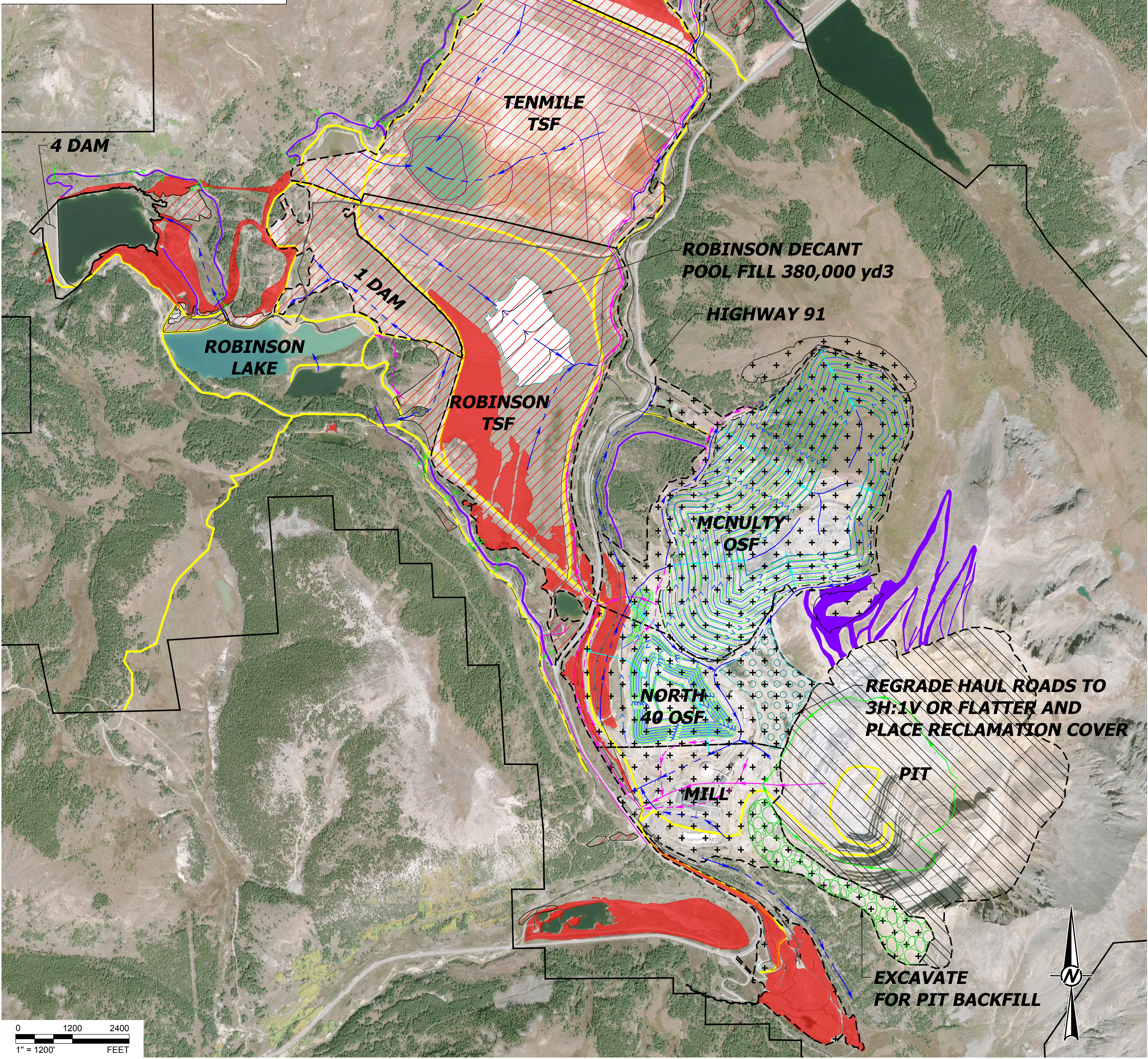


LEGEND

RECLAMATION COVER WITH UPLAND SEEDING

HAUL ROAD REGRADE AREA

NOTE(S)

- FINAL CLOSURE TOPOGRAPHY FOR TENMILE TSF, MAYFLOWER TSF AND NORTH 40 OSF OBTAINED FROM WHEELER AUTOCAD DRAWING FROM PERMIT AMENDMENT (AM-06) - CLIMAX MINE, FILENAME "AM-06-F (SITE)" DATED JANUARY 2024.
- FINAL CLOSURE TOPOGRAPHY FOR MCNULTY OSF AND NORTH 40 OSF OBTAINED FROM GOLDER ASSOCIATES' DRAWING FROM NORTH 40 AND MCNULTY OVERBURDEN STORAGE FACILITY DESIGN REPORT, FILENAME "OSF CLOSURE H&H PLAN" DATED MAY 5, 2017.
- AERIAL IMAGERY OBTAINED FROM WHEELER AUTOCAD DRAWING FROM PERMIT AMENDMENT (AM-06) - CLIMAX MINE, FILENAME "FLYOVER IMAGE" DATED JANUARY 2024.
- PIPING AND SURFACE WATER CHANNEL ALIGNMENTS OBTAINED FROM WHEELER REPORT, FILENAME "PERMIT AMENDMENT (AM-06) - CLIMAX MINE" DATED JANUARY 2024.
- PIPING AND SURFACE WATER CHANNEL ALIGNMENTS FOR NORTH 40 OSF AND MCNULTY OSF OBTAINED FROM GOLDER ASSOCIATES REPORT, FILENAME "NORTH 40 AND MCNULTY OVERBURDEN STORAGE FACILITY DESIGN REPORT" DATED MAY 5, 2017.

CLIENT
CLIMAX MOLYBDENUM COMPANY
11230 HIGHWAY 91
LEADVILLE, COLORADO 80461

CONSULTANT



YYYY-MM-DD	2024-08-01
DESIGNED	MP
PREPARED	MP
REVIEWED	AS
APPROVED	RS

PROJECT
RECLAMATION PLAN AND CLOSURE COST UPDATE 2024

TITLE
SITEWIDE CLOSURE REVEGETATION
CLIMAX MINE CLOSURE

PROJECT NO.
31404505.029

REV.
0

FIGURE
F-01

LEGEND

EXISTING CLOSURE COVER STOCKPILE

PROPOSED CLOSURE COVER STOCKPILE

28

STOCKPILE IDENTIFICATION NUMBER

STOCKPILE HAUL ROUTE

PERMANENT ROAD

FINAL OSF TOPOGRAPHY

FINAL TSF TOPOGRAPHY

PROPERTY BOUNDARY

NOTE(S)

1. FINAL CLOSURE TOPOGRAPHY FOR TENMILE TSF, MAYFLOWER TSF AND NORTH 40 OSF OBTAINED FROM WHEELER AUTOCAD DRAWING FROM PERMIT AMENDMENT (AM-06) - CLIMAX MINE, FILENAME "AM-06-F (SITE)" DATED JANUARY 2024.
2. FINAL CLOSURE TOPOGRAPHY FOR MCNULTY OSF AND NORTH 40 OSF OBTAINED FROM GOLDER ASSOCIATES' DRAWING FROM NORTH 40 AND MCNULTY OVERBURDEN STORAGE FACILITY DESIGN REPORT, FILENAME "OSF CLOSURE H&H PLAN" DATED MAY 5, 2017.
3. AERIAL IMAGERY OBTAINED FROM WHEELER AUTOCAD DRAWING FROM PERMIT AMENDMENT (AM-06) - CLIMAX MINE, FILENAME "FLYOVER IMAGE" DATED JANUARY 2024.

CLIENT
CLIMAX MOLYBDENUM COMPANY
11230 HIGHWAY 91
LEADVILLE, COLORADO 80461

CONSULTANT

YYYY-MM-DD	2024-08-01
DESIGNED	MP
PREPARED	MP
REVIEWED	AS
APPROVED	RS

PROJECT
RECLAMATION PLAN AND CLOSURE COST UPDATE 2024

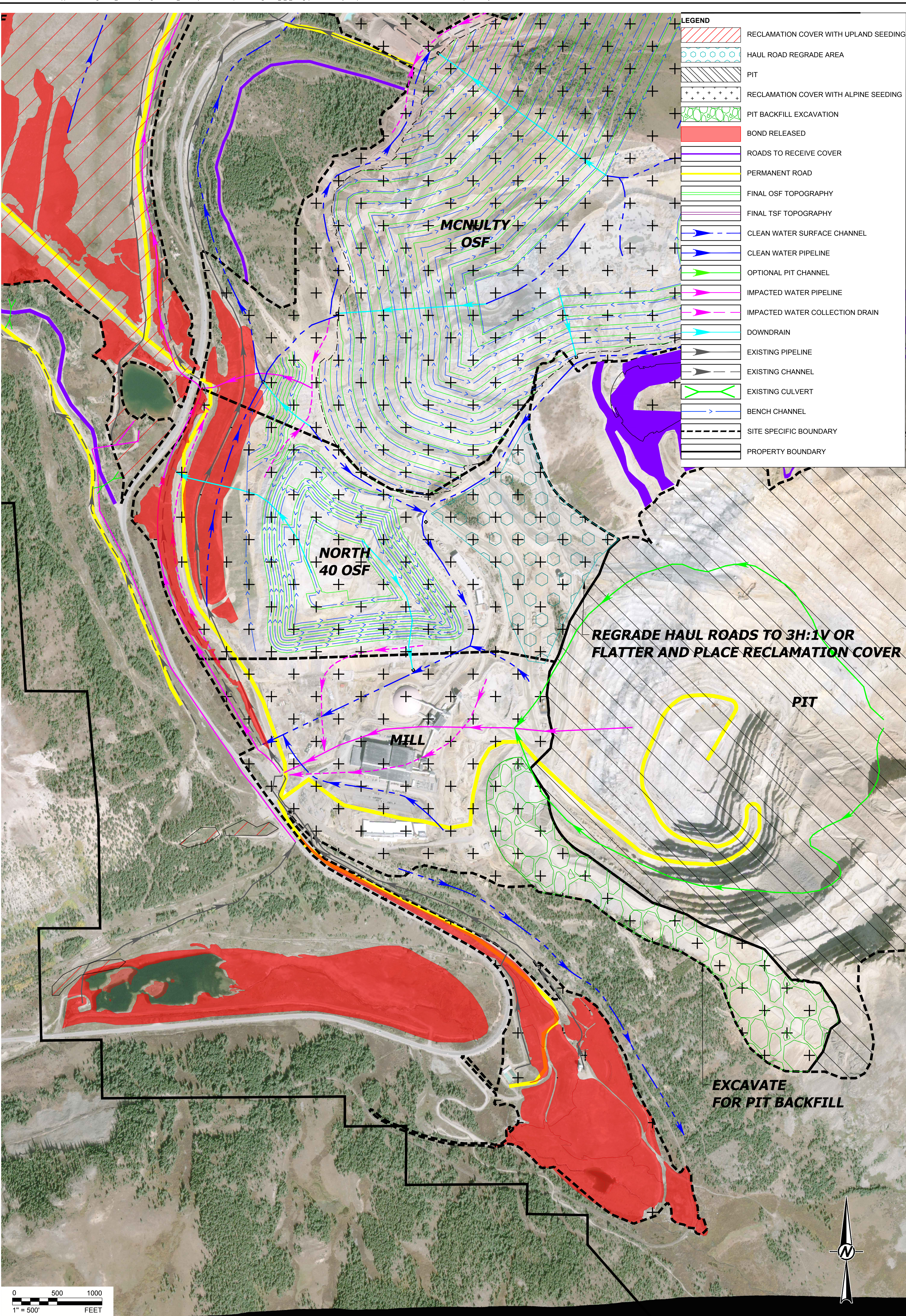
TITLE
CURRENT AND PROPOSED RECLAMATION COVER STOCKPILE
LOCATIONS
CLIMAX MINE CLOSURE

PROJECT NO.
31404505.029

REV.
0

FIGURE
F-02

IF THIS MEASUREMENT DOES NOT MATCH WHAT IS SHOWN, THE SHEET SIZE HAS BEEN MODIFIED FROM A5 AND 1 in



NOTE(S)

1. FINAL CLOSURE TOPOGRAPHY FOR TENMILE TSF, MAYFLOWER TSF AND NORTH 40 OSF OBTAINED FROM WHEELER AUTOCAD DRAWING FROM PERMIT AMENDMENT (AM-06) - CLIMAX MINE, FILENAME "AM-06-F (SITE)" DATED JANUARY 2024.
2. FINAL CLOSURE TOPOGRAPHY FOR MCNULTY OSF AND NORTH 40 OSF OBTAINED FROM GOLDER ASSOCIATES' DRAWING FROM NORTH 40 AND MCNULTY OVERBURDEN STORAGE FACILITY DESIGN REPORT, FILENAME "OSF CLOSURE H&H PLAN" DATED MAY 5, 2017.
3. AERIAL IMAGERY OBTAINED FROM WHEELER AUTOCAD DRAWING FROM PERMIT AMENDMENT (AM-06) - CLIMAX MINE, FILENAME "FLYOVER IMAGE" DATED JANUARY 2024.
4. PIPING AND SURFACE WATER CHANNEL ALIGNMENTS OBTAINED FROM WHEELER REPORT, FILENAME "PERMIT AMENDMENT (AM-06) - CLIMAX MINE" DATED JANUARY 2024.
5. PIPING AND SURFACE WATER CHANNEL ALIGNMENTS FOR NORTH 40 OSF AND MCNULTY OSF OBTAINED FROM GOLDER ASSOCIATES REPORT, FILENAME "NORTH 40 AND MCNULTY OVERBURDEN STORAGE FACILITY DESIGN REPORT" DATED MAY 5, 2017.

CLIENT
CLIMAX MOLYBDENUM COMPANY
11230 HIGHWAY 91
LEADVILLE, COLORADO 80461

CONSULTANT



YYYY-MM-DD	2024-08-01
DESIGNED	MP
PREPARED	MP
REVIEWED	AS
APPROVED	RS

PROJECT
RECLAMATION PLAN AND CLOSURE COST UPDATE 2024

TITLE
OPEN PIT, MILL AND STORKE AREAS
CLIMAX MINE CLOSURE

PROJECT NO.
31404505.029

REV.
0

FIGURE
F-03

LEGEND

RECLAMATION COVER WITH UPLAND SEEDING

HAUL ROAD REGRADE AREA

PIT

RECLAMATION COVER WITH ALPINE SEEDING

PIT BACKFILL EXCAVATION

BOND RELEASED

ROADS TO RECEIVE COVER

PERMANENT ROAD

FINAL OSF TOPOGRAPHY

FINAL TSF TOPOGRAPHY

CLEAN WATER SURFACE CHANNEL

CLEAN WATER PIPELINE

OPTIONAL PIT CHANNEL

IMPACTED WATER PIPELINE

IMPACTED WATER COLLECTION DRAIN

DOWNDRAIN

EXISTING PIPELINE

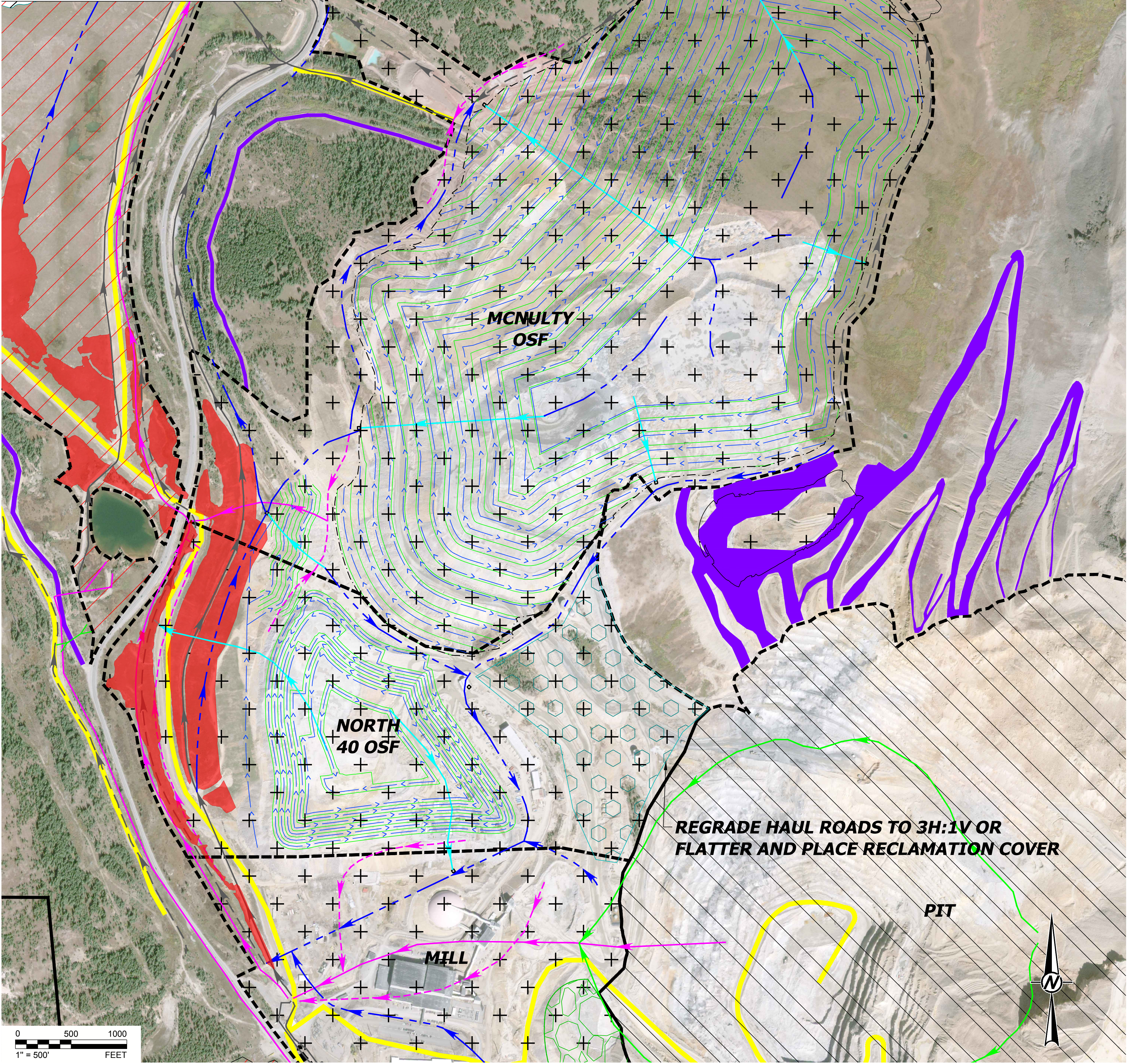
EXISTING CHANNEL

EXISTING CULVERT

BENCH CHANNEL

SITE SPECIFIC BOUNDARY

PROPERTY BOUNDARY



NOTE(S)

- FINAL CLOSURE TOPOGRAPHY FOR TENMILE TSF, MAYFLOWER TSF AND NORTH 40 OSF OBTAINED FROM WHEELER AUTOCAD DRAWING FROM PERMIT AMENDMENT (AM-06) - CLIMAX MINE, FILENAME "AM-06-F (SITE)" DATED JANUARY 2024.
- FINAL CLOSURE TOPOGRAPHY FOR MCNULTY OSF AND NORTH 40 OSF OBTAINED FROM GOLDER ASSOCIATES' DRAWING FROM NORTH 40 AND MCNULTY OVERBURDEN STORAGE FACILITY DESIGN REPORT, FILENAME "OSF CLOSURE H&H PLAN" DATED MAY 5, 2017.
- AERIAL IMAGERY OBTAINED FROM WHEELER AUTOCAD DRAWING FROM PERMIT AMENDMENT (AM-06) - CLIMAX MINE, FILENAME "FLYOVER IMAGE" DATED JANUARY 2024.
- PIPING AND SURFACE WATER CHANNEL ALIGNMENTS OBTAINED FROM WHEELER REPORT, FILENAME "PERMIT AMENDMENT (AM-06) - CLIMAX MINE" DATED JANUARY 2024.
- PIPING AND SURFACE WATER CHANNEL ALIGNMENTS FOR NORTH 40 OSF AND MCNULTY OSF OBTAINED FROM GOLDER ASSOCIATES REPORT, FILENAME "NORTH 40 AND MCNULTY OVERBURDEN STORAGE FACILITY DESIGN REPORT" DATED MAY 5, 2017.

CLIENT
CLIMAX MOLYBDENUM COMPANY
11230 HIGHWAY 91
LEADVILLE, COLORADO 80461

CONSULTANT



YYYY-MM-DD	2024-08-01
DESIGNED	MP
PREPARED	MP
REVIEWED	AS
APPROVED	RS

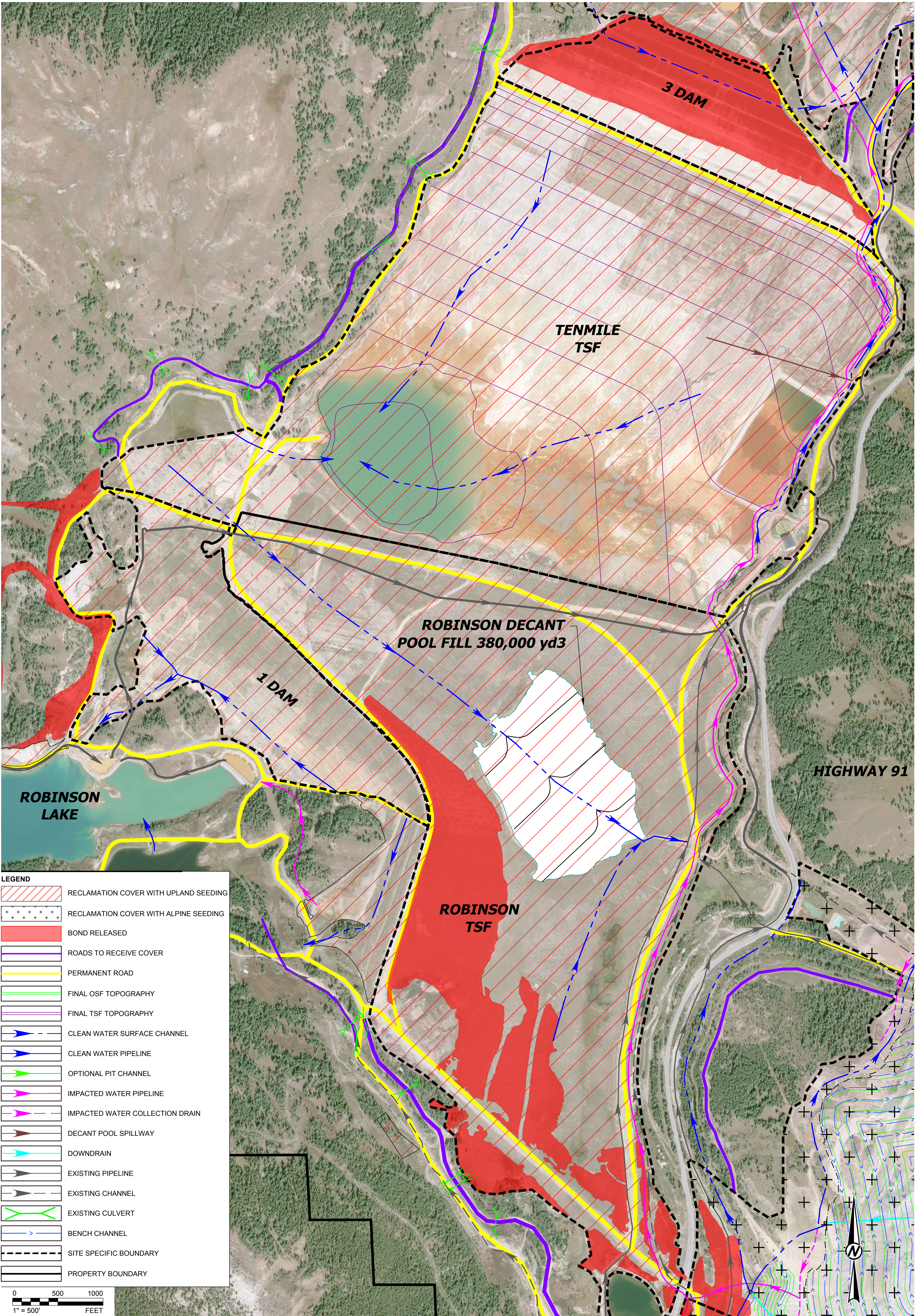
PROJECT
RECLAMATION PLAN AND CLOSURE COST UPDATE 2024

TITLE
MCNULTY OVERBURDEN STORAGE FACILITY
CLIMAX MINE CLOSURE

PROJECT NO.
31404505.029

REV.
0

FIGURE
F-04



LEGEND

RECLAMATION COVER WITH UPLAND SEEDING

RECLAMATION COVER WITH ALPINE SEEDING

BOND RELEASED

ROADS TO RECEIVE COVER

PERMANENT ROAD

FINAL OSF TOPOGRAPHY

FINAL TSF TOPOGRAPHY

CLEAN WATER SURFACE CHANNEL

CLEAN WATER PIPELINE

OPTIONAL PIT CHANNEL

IMPACTED WATER PIPELINE

IMPACTED WATER COLLECTION DRAIN

DECANT POOL SPILLWAY

DOWNDRAIN

EXISTING PIPELINE

EXISTING CHANNEL

EXISTING CULVERT

BENCH CHANNEL

SITE SPECIFIC BOUNDARY

PROPERTY BOUNDARY

05001000

1" = 500'

FEET

- NOTE(S)
1.

FINAL CLOSURE TOPOGRAPHY FOR TENMILE TSF, MAYFLOWER TSF AND NORTH 40 OSF OBTAINED FROM WHEELER AUTOCAD DRAWING FROM PERMIT AMENDMENT (AM-06) - CLIMAX MINE, FILENAME "AM-06-F (SITE)" DATED JANUARY 2024.
2.
- FINAL CLOSURE TOPOGRAPHY FOR MCNULTY OSF AND NORTH 40 OSF OBTAINED FROM GOLDER ASSOCIATES' DRAWING FROM NORTH 40 AND MCNULTY OVERBURDEN STORAGE FACILITY DESIGN REPORT, FILENAME "OSF CLOSURE H&H PLAN" DATED MAY 5, 2017.

3.

4.

5.

CLIENT

CLIMAX MOLYBDENUM COMPANY

11230 HIGHWAY 91

LEADVILLE, COLORADO 80461

CONSULTANT



YYYY-MM-DD	2024-08-01
DESIGNED	MP
PREPARED	MP
REVIEWED	AS
APPROVED	RS

PROJECT

RECLAMATION PLAN AND CLOSURE COST UPDATE 2024

TITLE

ROBINSON AND TENMILE TAILINGS STORAGE FACILITIES

CLIMAX MINE CLOSURE

PROJECT NO.

31404505.029

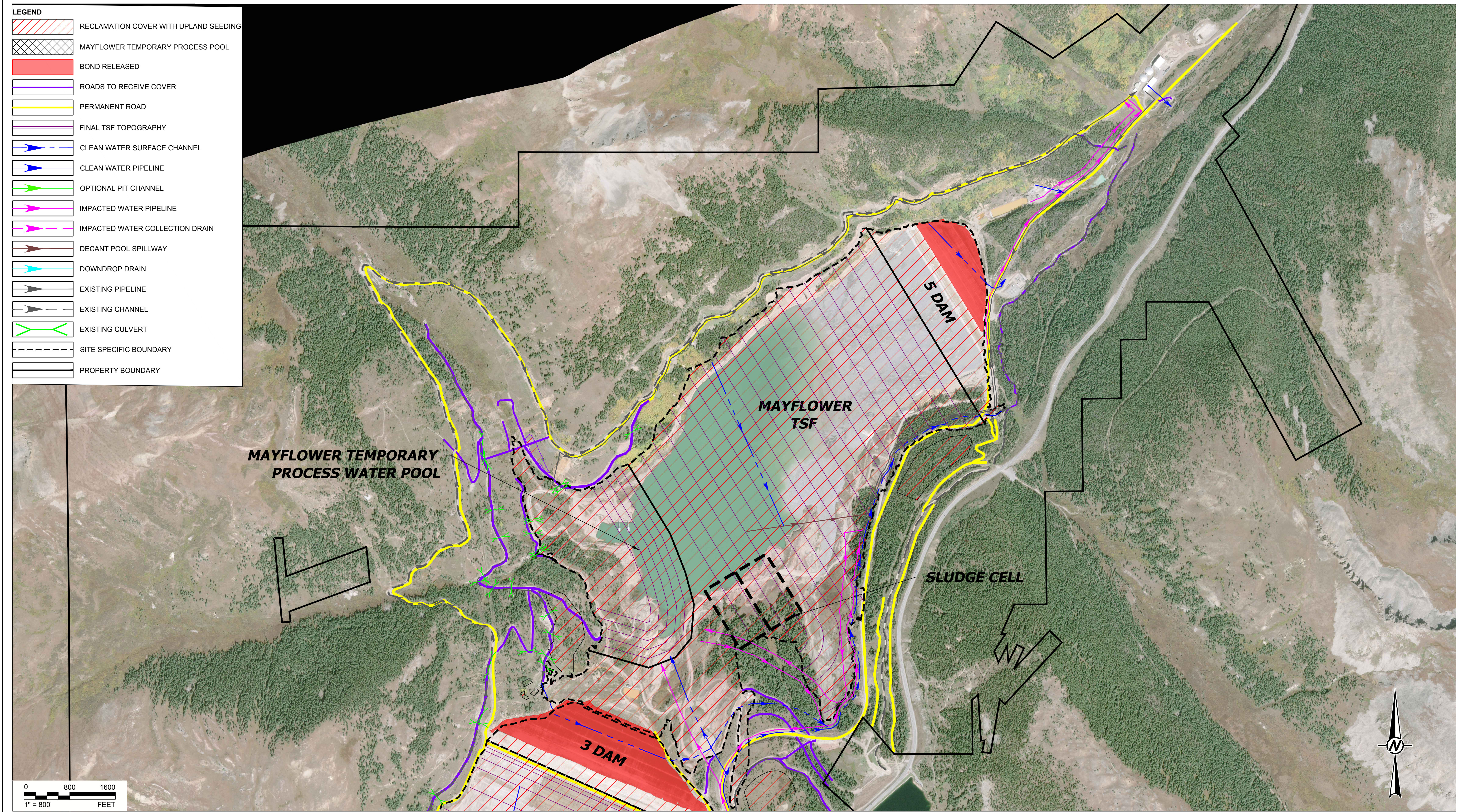
REV.

0

FIGURE

F-05

Path: C:\Users\USMP727042\AppData\Local\Temp\DrawApp\Public_144201 | File Name: Topsoil areas figures 6 and 7.dwg | Last Edited By: usmp727042 | Date: 2024-08-01 | Time: 3:09:10 PM | Printed By: USMP727042 | Date: 2024-08-01 | Time: 3:11:10 PM



NOTE(S)

1. FINAL CLOSURE TOPOGRAPHY FOR TENMILE TSF, MAYFLOWER TSF AND NORTH 40 OSF OBTAINED FROM WHEELER AUTOCAD DRAWING FROM PERMIT AMENDMENT (AM-06) - CLIMAX MINE, FILENAME "AM-06-F (SITE)" DATED JANUARY 2024.
2. FINAL CLOSURE TOPOGRAPHY FOR MCNULTY OSF AND NORTH 40 OSF OBTAINED FROM GOLDER ASSOCIATES' DRAWING FROM NORTH 40 AND MCNULTY OVERBURDEN STORAGE FACILITY DESIGN REPORT, FILENAME "OSF CLOSURE H&H PLAN" DATED MAY 5, 2017.
3. AERIAL IMAGERY OBTAINED FROM WHEELER AUTOCAD DRAWING FROM PERMIT AMENDMENT (AM-06) - CLIMAX MINE, FILENAME "FLYOVER IMAGE" DATED JANUARY 2024.
4. PIPING AND SURFACE WATER CHANNEL ALIGNMENTS OBTAINED FROM WHEELER REPORT, FILENAME "PERMIT AMENDMENT (AM-06) - CLIMAX MINE" DATED JANUARY 2024.
5. PIPING AND SURFACE WATER CHANNEL ALIGNMENTS FOR NORTH 40 OSF AND MCNULTY OSF OBTAINED FROM GOLDER ASSOCIATES REPORT, FILENAME "NORTH 40 AND MCNULTY OVERBURDEN STORAGE FACILITY DESIGN REPORT" DATED MAY 5, 2017.

CLIENT
CLIMAX MOLYBDENUM COMPANY
11230 HIGHWAY 91
LEADVILLE, COLORADO 80461

CONSULTANT



YYYY-MM-DD	2024-08-01
DESIGNED	MP
PREPARED	MP
REVIEWED	AS
APPROVED	RS

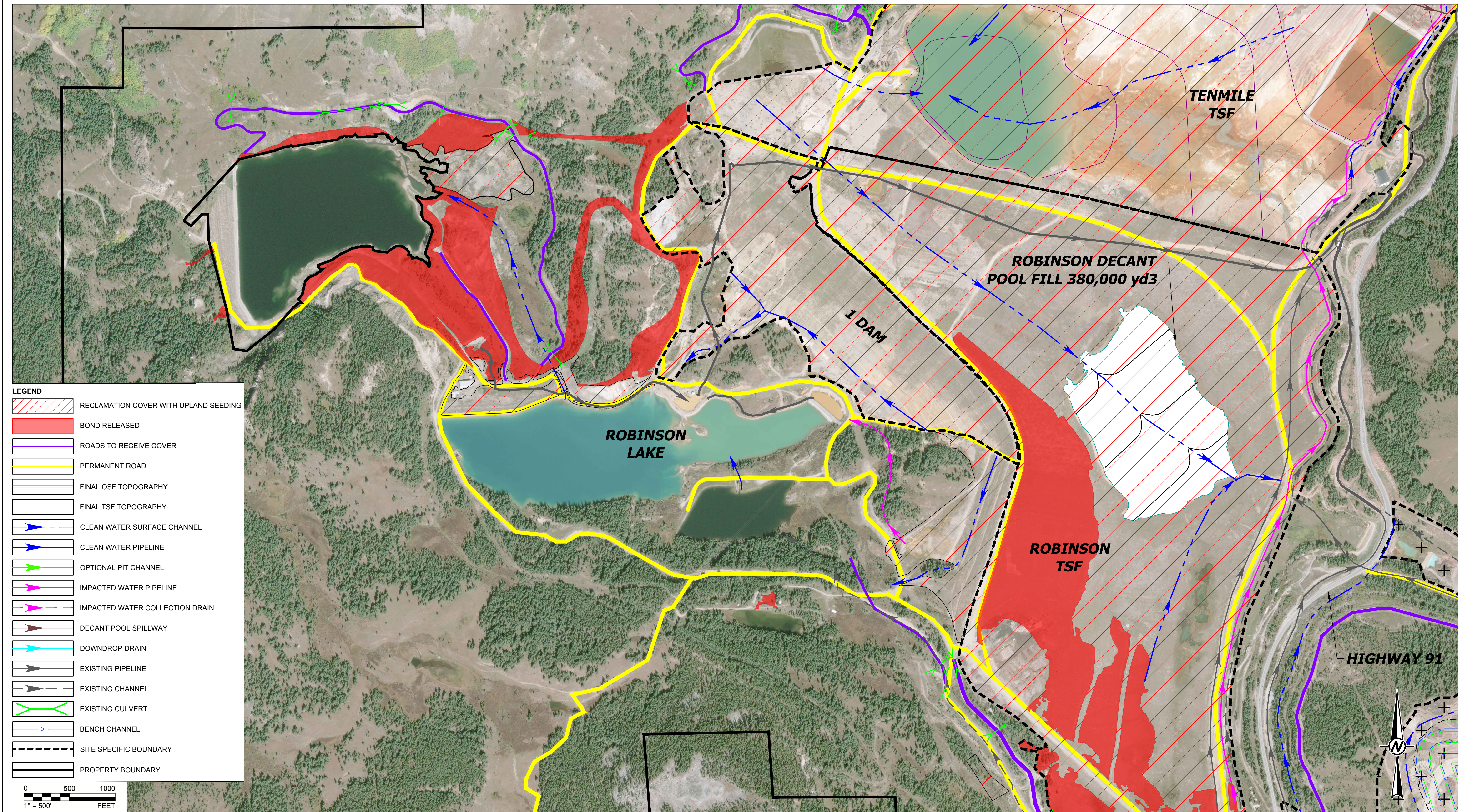
PROJECT
RECLAMATION PLAN AND CLOSURE COST UPDATE 2024

TITLE
**MAYFLOWER TAILING STORAGE FACILITY
CLIMAX MINE CLOSURE**

PROJECT NO. 31404505.029	REV. 0	FIGURE F-06
-----------------------------	-----------	----------------

IF THIS MEASUREMENT DOES NOT MATCH WHAT IS SHOWN, THE SHEET SIZE HAS BEEN MODIFIED FROM A3 AND 1 in

Path: C:\Users\USMP727042\AppData\Local\Temp\DrawAsPublic_L_164201_1 File Name: Topsoil areas figures 6 and 7.dwg | Last Edited By: usmp727042 Date: 2024-08-01 Time: 3:09:10 PM | Printed By: USMP727042 Date: 2024-08-01 Time: 3:11:15 PM



LEGEND

RECLAMATION COVER WITH UPLAND SEEDING

BOND RELEASED

ROADS TO RECEIVE COVER

PERMANENT ROAD

FINAL OSF TOPOGRAPHY

FINAL TSF TOPOGRAPHY

CLEAN WATER SURFACE CHANNEL

CLEAN WATER PIPELINE

OPTIONAL PIT CHANNEL

IMPACTED WATER PIPELINE

IMPACTED WATER COLLECTION DRAIN

DECANT POOL SPILLWAY

DOWNDROP DRAIN

EXISTING PIPELINE

EXISTING CHANNEL

EXISTING CULVERT

BENCH CHANNEL

SITE SPECIFIC BOUNDARY

PROPERTY BOUNDARY

1" = 500'

FEET

- NOTE(S)**
1. FINAL CLOSURE TOPOGRAPHY FOR TENMILE TSF, MAYFLOWER TSF AND NORTH 40 OSF OBTAINED FROM WHEELER AUTOCAD DRAWING FROM PERMIT AMENDMENT (AM-06) - CLIMAX MINE, FILENAME "AM-06-F (SITE)" DATED JANUARY 2024.
 2. FINAL CLOSURE TOPOGRAPHY FOR MCNULTY OSF AND NORTH 40 OSF OBTAINED FROM GOLDER ASSOCIATES, DRAWING FROM NORTH 40 AND MCNULTY OVERBURDEN STORAGE FACILITY DESIGN REPORT, FILENAME "OSF CLOSURE H&H PLAN" DATED MAY 5, 2017.
 3. AERIAL IMAGERY OBTAINED FROM WHEELER AUTOCAD DRAWING FROM PERMIT AMENDMENT (AM-06) - CLIMAX MINE, FILENAME "FLYOVER IMAGE" DATED JANUARY 2024.
 4. PIPING AND SURFACE WATER CHANNEL ALIGNMENTS OBTAINED FROM WHEELER REPORT, FILENAME "PERMIT AMENDMENT (AM-06) - CLIMAX MINE" DATED JANUARY 2024.
 5. PIPING AND SURFACE WATER CHANNEL ALIGNMENTS FOR NORTH 40 OSF AND MCNULTY OSF OBTAINED FROM GOLDER ASSOCIATES REPORT, FILENAME "NORTH 40 AND MCNULTY OVERBURDEN STORAGE FACILITY DESIGN REPORT" DATED MAY 5, 2017.

CLIENT
CLIMAX MOLYBDENUM COMPANY
11230 HIGHWAY 91
LEADVILLE, COLORADO 80461

CONSULTANT



YYYY-MM-DD	2024-08-01
DESIGNED	MP
PREPARED	MP
REVIEWED	AS
APPROVED	RS

PROJECT
RECLAMATION PLAN AND CLOSURE COST UPDATE 2024

TITLE
**ROBINSON LAKE AREA
CLIMAX MINE CLOSURE**

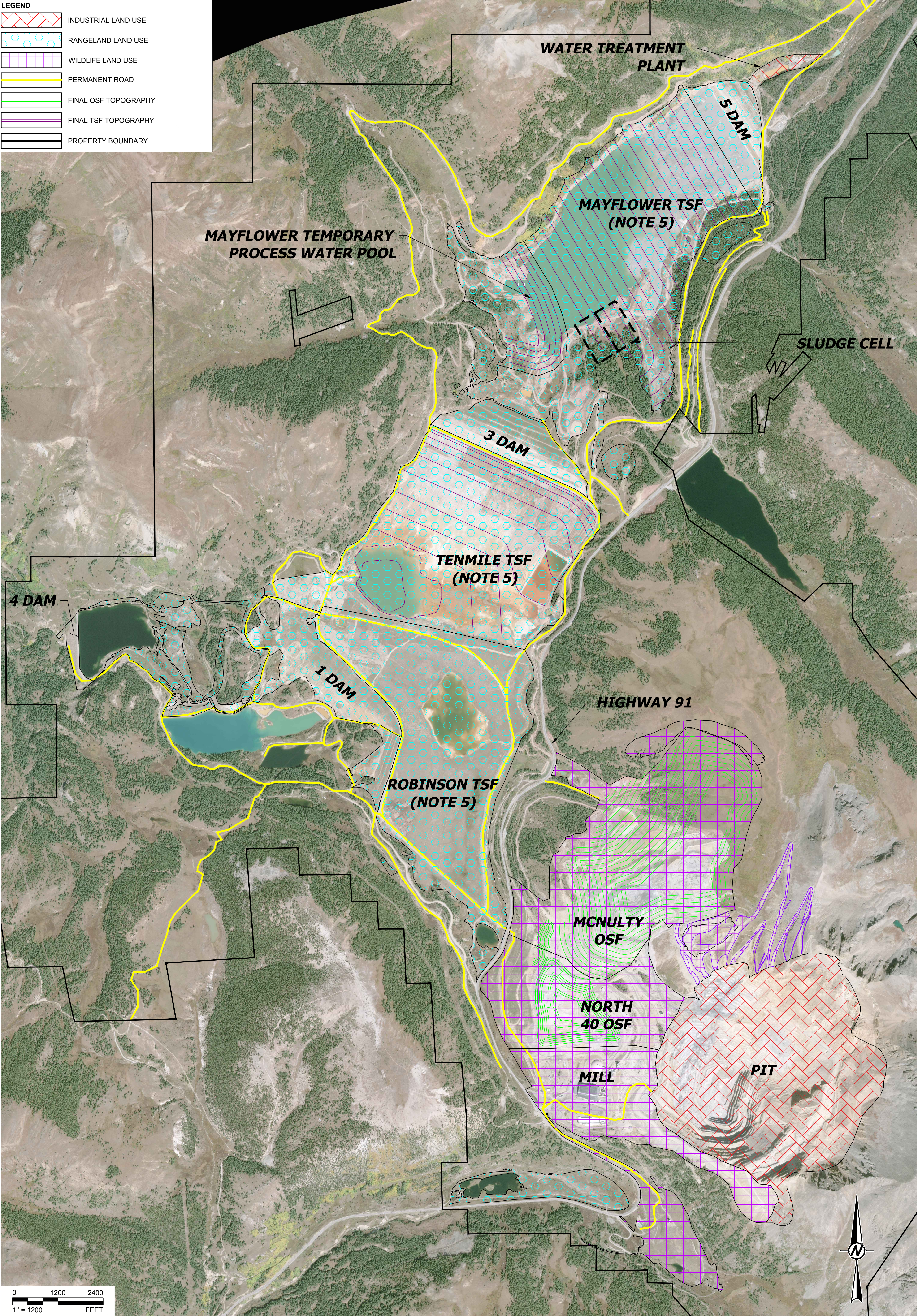
PROJECT NO.
31404505.029

REV.
0

FIGURE
F-07

1 in IF THIS MEASUREMENT DOES NOT MATCH WHAT IS SHOWN, THE SHEET SIZE HAS BEEN MODIFIED FROM .ANSI D

- LEGEND
- INDUSTRIAL LAND USE
- RANGELAND LAND USE
- WILDLIFE LAND USE
- PERMANENT ROAD
- FINAL OSF TOPOGRAPHY
- FINAL TSF TOPOGRAPHY
- PROPERTY BOUNDARY



- NOTE(S)
1.

FINAL CLOSURE TOPOGRAPHY FOR TENMILE TSF, MAYFLOWER TSF AND NORTH 40 OSF OBTAINED FROM WHEELER AUTOCAD DRAWING FROM PERMIT AMENDMENT (AM-06) - CLIMAX MINE, FILENAME "AM-06-F (SITE)" DATED JANUARY 2024.
2.
- FINAL CLOSURE TOPOGRAPHY FOR MCNULTY OSF AND NORTH 40 OSF OBTAINED FROM GOLDER ASSOCIATES' DRAWING FROM NORTH 40 AND MCNULTY OVERBURDEN STORAGE FACILITY DESIGN REPORT, FILENAME "OSF CLOSURE H&H PLAN" DATED MAY 5, 2017.

3.

4.

5.

CLIENT
CLIMAX MOLYBDENUM COMPANY
11230 HIGHWAY 91
LEADVILLE, COLORADO 80461

CONSULTANT



YYYY-MM-DD	2024-08-01
DESIGNED	MP
PREPARED	MP
REVIEWED	AS
APPROVED	RS

PROJECT
RECLAMATION PLAN AND CLOSURE COST UPDATE 2024

TITLE
PROPOSED LAND RECLAMATION TYPE
CLIMAX MINE CLOSURE

PROJECT NO.
31404505.029

REV.
0

FIGURE
F-08