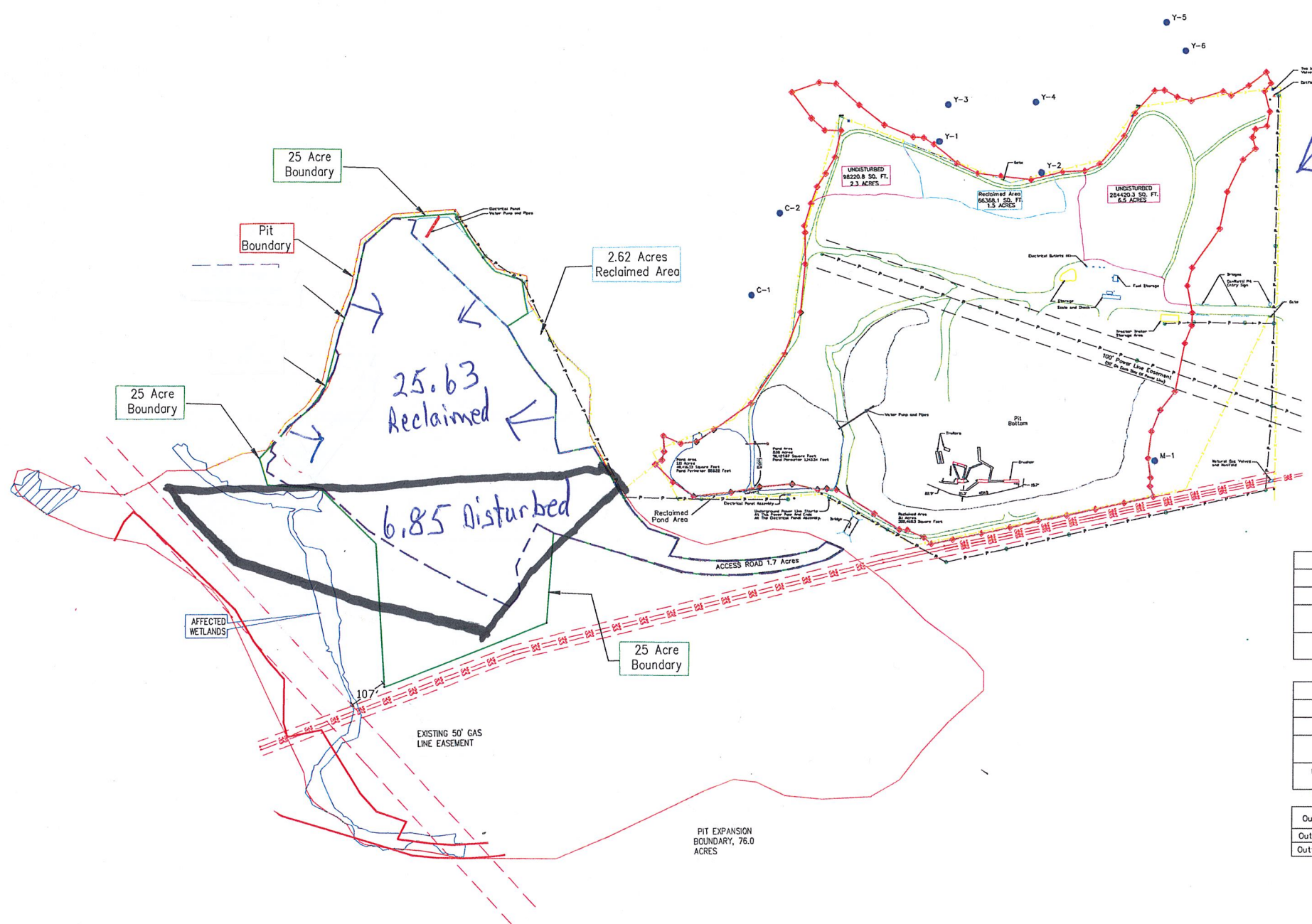


7/25/24

CAMILLETTI - MILNER PIT NUMBER TWO AMENDED  
COUNTY OF ROUTT, STATE OF COLORADO

No change North  
of Trout Creek



Legend

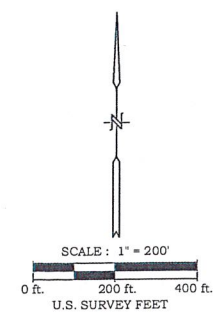
—●—	Pit Boundary
—●—	Pit Boundary Point
—●—	Pit Control Point
—●—	Fence Line
—●—	Power Pole
—●—	Power Line
—●—	Power Pole Restraint
—●—	Outflow Point
—●—	Irrigation Valve
—●—	Underground Water Monitoring Well
—●—	Pit Road
—●—	Disturbed Area
—●—	Reclaim Area
—●—	Undisturbed Area
—●—	Topsoil

Notes

CAMILLETTI-MILNER PIT NUMBER TWO		
Pit Areas Were Calculated On Dec. 01, 2016.		
Pit Surveyed Nov. 30, 2016.		
Pit Boundary Area 42.35 Acres		
Disturbed Area 23.95 Acres	Undisturbed Area 8.78 Acres	Reclaimed Area 9.62 Acres

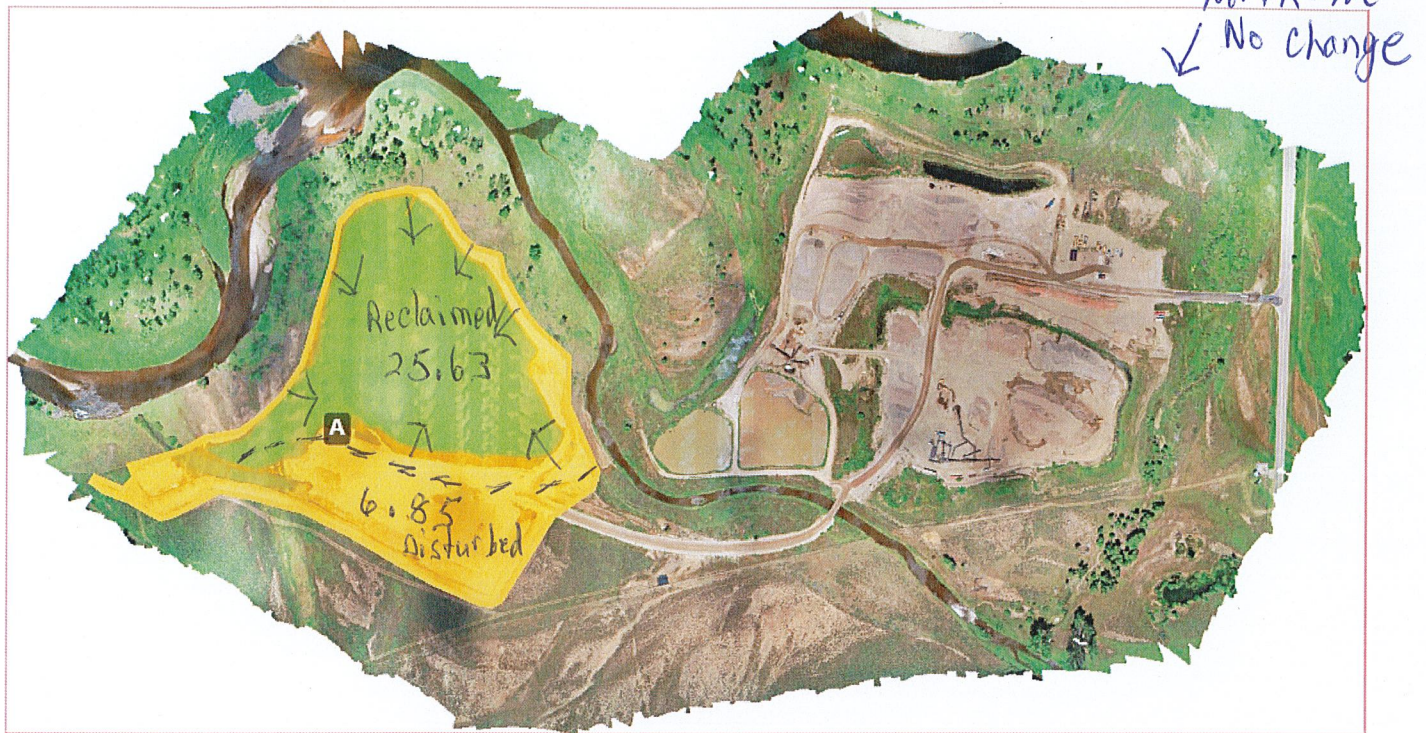
CAMILLETTI-MILNER PIT EXPANSION		
Pit Areas Were Calculated On July 29th, 2019.		
Pit Surveyed Nov. 30, 2016.		
Pit Boundary Area 76.00 Acres		
Disturbed Area 6.85	Undisturbed Area 43.32	Reclaimed Area 25.63

Outflow	Latitude	Longitude	Date Measured
Outflow 1	40° 28' 33.16463" N	107° 01' 14.67913" W	3/27/2007
Outflow 2	40° 28' 35.26802" N	107° 00' 42.92658" W	1/25/2007



PRECISION EXCAVATING, INC. EMAIL: daniel@precisionexcavatinginc.com	REVISIONS:	CAMILLETTI - MILNER PIT NUMBER TWO AMENDED COUNTY OF ROUTT, STATE OF COLORADO
	FW 10/10/14	
JOB: 187	DATE: 7/25/19	DRAFTING: FTS
	E.F.B. MILNER PIT 2014	FIELD: SAY
		SHEET: 1 of 1

7/25/24



## 1. Disturbed Acres

A. 5.15 - Mined 1.5 acres from Last year/reclaimed now

1.70 - Haul Road

6.85 - Total Disturbed

2. Area Reclaimed - 25.63