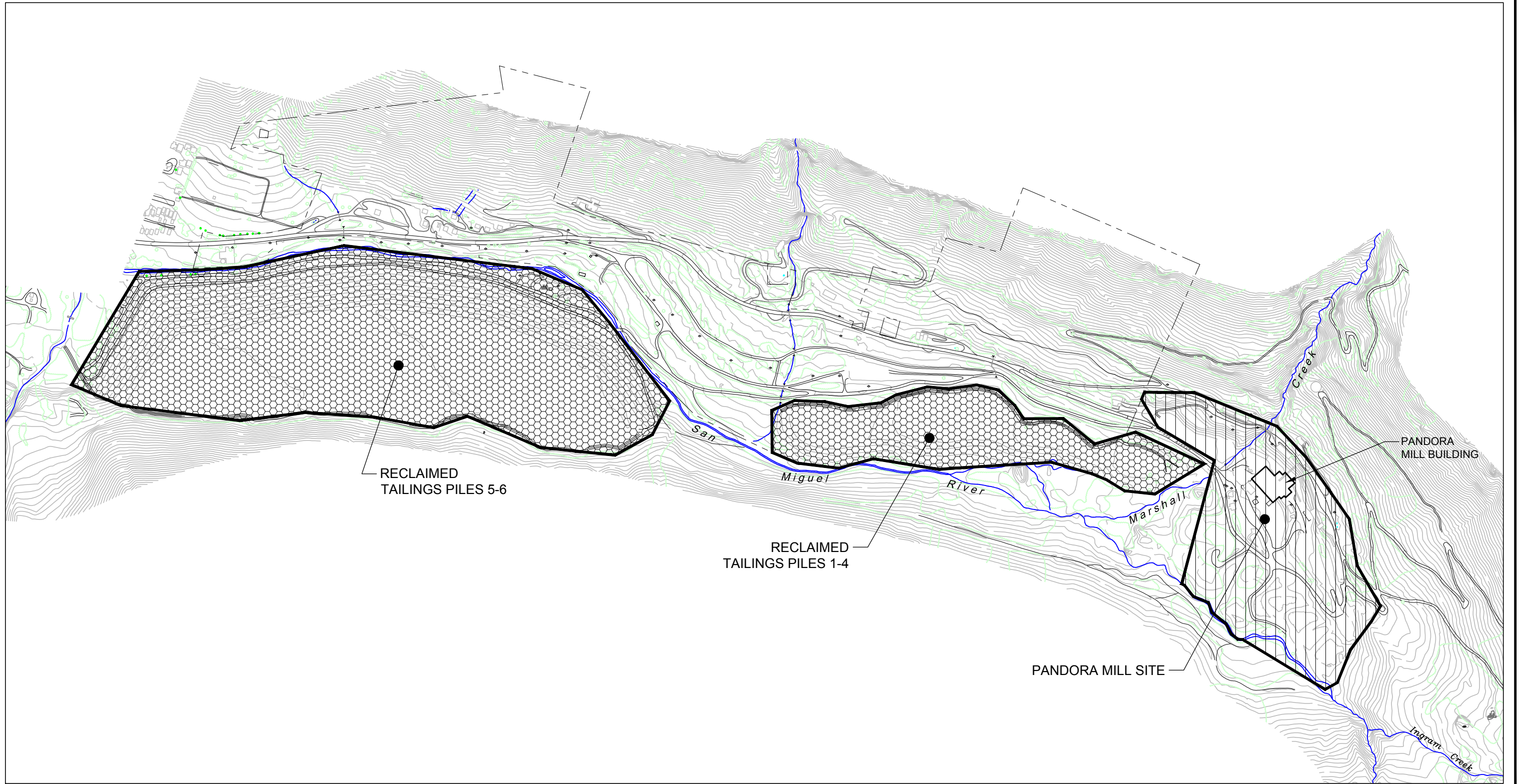


Z:\Project Files\Idarado\AutoCAD Files\WME-CAD\2020\Fig-permit-001.dwg SAVED:6/29/20 PRINTED:6/29/20 BY: TOM



LEGEND

- PERMIT BOUNDARY
- PANDORA MILL SITE
- TAILINGS AREA

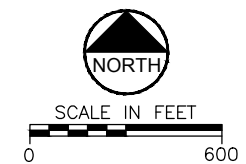


FIGURE 1
IDARADO MINING COMPANY
PANDORA PERMIT BOUNDARIES

WORTHINGTON
MILLER
ENVIRONMENTAL, LLC.

Date: JUNE 2023
Project: IDARADO
File: FIG-PERMIT-001

O:\18 Idarado\22 Ouray Land Release\2022\Location Map Permit_22.dwg SAVED:12/7/21 PRINTED:2/14/22



REFERENCE:
BACKGROUND PHOTO BY GOOGLE EARTH (10/13/2017)

NO	REVISION DESCR.	DATE	BY

IDARADO MINING COMPANY

RED MOUNTAIN

2022 PERMIT BOUNDARIES

Engineering Analytics, Inc.

1600 Specht Point Road, Suite 209
Fort Collins, CO 80525
(970) 488-3111

ISSUED BY:

Project Number: 101.18.22
Drawn By: TB
Designed By: MLC
Approved By: MLC
Date: 2/14/2022
Scale: 1" = 300'
Drawing Number:

FIGURE 1