



STATE OF
COLORADO

Simmons - DNR, Leigh <leigh.simmons@state.co.us>

C1980007, West Elk Mine, June Inspection Report

1 message

Simmons - DNR, Leigh <leigh.simmons@state.co.us>

Thu, Jun 13, 2024 at 6:55 PM

To: "Wilczek, Jessica" <jwilczek@archrsc.com>

Cc: "Hiatt, Chase" <chiatt@archrsc.com>

Attached

Leigh Simmons
Environmental Protection Specialist



COLORADO
Division of Reclamation,
Mining and Safety
Department of Natural Resources

P [303.866.3567](tel:303.866.3567) x 8121 | C [720.220.1180](tel:720.220.1180) | F [303.832.8106](tel:303.832.8106)

1313 Sherman Street, Room 215, Denver, CO 80203

leigh.simmons@state.co.us | <https://drms.colorado.gov>




INSP-REPORTC_C1980007_LDS_06132024062058.pdf
5607K



PERMIT INFORMATION

Permit Number: C-1980-007 Mine Name: West Elk Mine Operator: Mountain Coal Company, LLC Operator Address: Jessica Wilczek 5174 Highway 133 Somerset, CO 81434	County: Delta, Gunnison Operation Type: Underground Permit Status: Active Ownership: Private
	Operator Representative Present: Chase Hiatt
Operator Representative Signature: (Field Issuance Only) 	

INSPECTION INFORMATION

Inspection Start Date: June 12, 2024 Inspection Start Time: 12:00 Inspection End Date: Inspection End Time:	Inspection Type: Coal Partial Inspection Inspection Reason: Normal I&E Program Weather: Clear
Joint Inspection Agency: None	Joint Inspection Contacts:
Post Inspection Agency: None	Post Inspection Contacts:
Inspector(s): Leigh Simmons	Inspector's Signature:  Signature Date: June 13, 2024

Inspection Topic Summary

NOTE: Y=Inspected N=Not Inspected R=Comments Noted V=Violation Issued NA=Not Applicable

N - Air Resource Protection

N - Availability of Records

N - Backfill & Grading

N - Excess Spoil and Dev. Waste

N - Explosives

N - Fish & Wildlife

N - Hydrologic Balance

R - Gen. Compliance With Mine Plan

N - Other

R - Processing Waste

R - Roads

N - Reclamation Success

N - Revegetation

N - Subsidence

N - Slides and Other Damage

R - Support Facilities On-site

N - Signs and Markers

N - Support Facilities Not On-site

N - Special Categories Of Mining

N - Topsoil

COMMENTS

This was a partial inspection by Leigh Simmons of the Division of Reclamation, Mining and Safety (Division). The weather was clear, hot and dry, although the mine had been receiving frequent afternoon rain showers. The mine was active. The inspection was accompanied by Chase Hiatt of Mountain Coal Company (MCC).

GENERAL MINE PLAN COMPLIANCE:

Longwall mining of the LWE12 panel was in progress, between crosscuts 10 and 9 on the headgate.

Development of the LWE16 panel was complete.

Pillaring of the Sunset Mains South was in progress, at around crosscut 16. The work was being done by contractors with Phoenix Mining.

Development work in the B-seam was in progress.

PROCESSING WASTE/COAL MINE WASTE PILES – Rule 4.10 and 4.11

Drainage Control; Surface Stabilization; Placement:

Refuse was being generated at the time of the inspection. New refuse was being temporarily stockpiled on the RPE. No refuse was being transported to the RPEE, but work was in progress on the RPEE to spread, dry and compact material that had been transported before the winter. An excavator was moving material from the west side of the pile to the east, where it was being spread with a dozer, then compacted with a sheep's foot compactor. Until the material already on the RPEE has been compacted it will be difficult to handle new material on the pile.

Some soil had recently been spread on graded outcrops of the pile, and beside the road. Some areas of graded outcrop had not yet been covered with soil. It appeared that some topsoil had been stripped to allow the underdrain to be extended, and that the side drain on the western edge of the pile had also been extended.

ROADS – Rule 4.03

Construction 4.03.1(3)/4.03.2(3), Drainage 4.03.1(4)/4.03.2(4), Surfacing and Maintenance 4.03.1(5) and (6)/4.03.2(5) and (6), Reclamation 4.03.1(7)/4.03.2(7):

The RPEE haul road was in good condition and was being worked on by a grader at the time of the

Number of Partial Inspection this Fiscal Year: 9

Number of Complete Inspections this Fiscal Year: 4

inspection. The surface of the road had recently been graveled.

SUPPORT FACILITIES - Rule 4.04:

The Box Canyon North pipeline project was still in progress. The east section of pipeline was complete. The trench for the west section had been dug, but MCC were waiting on a pipe fuser. The buildings for the pump houses were not yet on-site, and the pumps would not be set until the buildings were ready.

The construction of the raised bore shaft at the Deer Creek Vent Shaft site had not yet begun, but the raised bore drill rig had been brought to the mine and was parked on the Sylvester Gulch haul road. The weight of the rig (~200,000 lbs) and the size of the trailer used to haul it are such that transporting it can be a significant project. Improvements to the road to the Deer Creek shaft will be necessary but had not yet begun.

DOCUMENTS RECEIVED

N/A

OTHER (SPECIFY)

N/A

ENFORCEMENT ACTIONS/COMPLIANCE

No enforcement actions were initiated as a result of this inspection, nor are any pending.

Number of Partial Inspection this Fiscal Year: 9

Number of Complete Inspections this Fiscal Year: 4

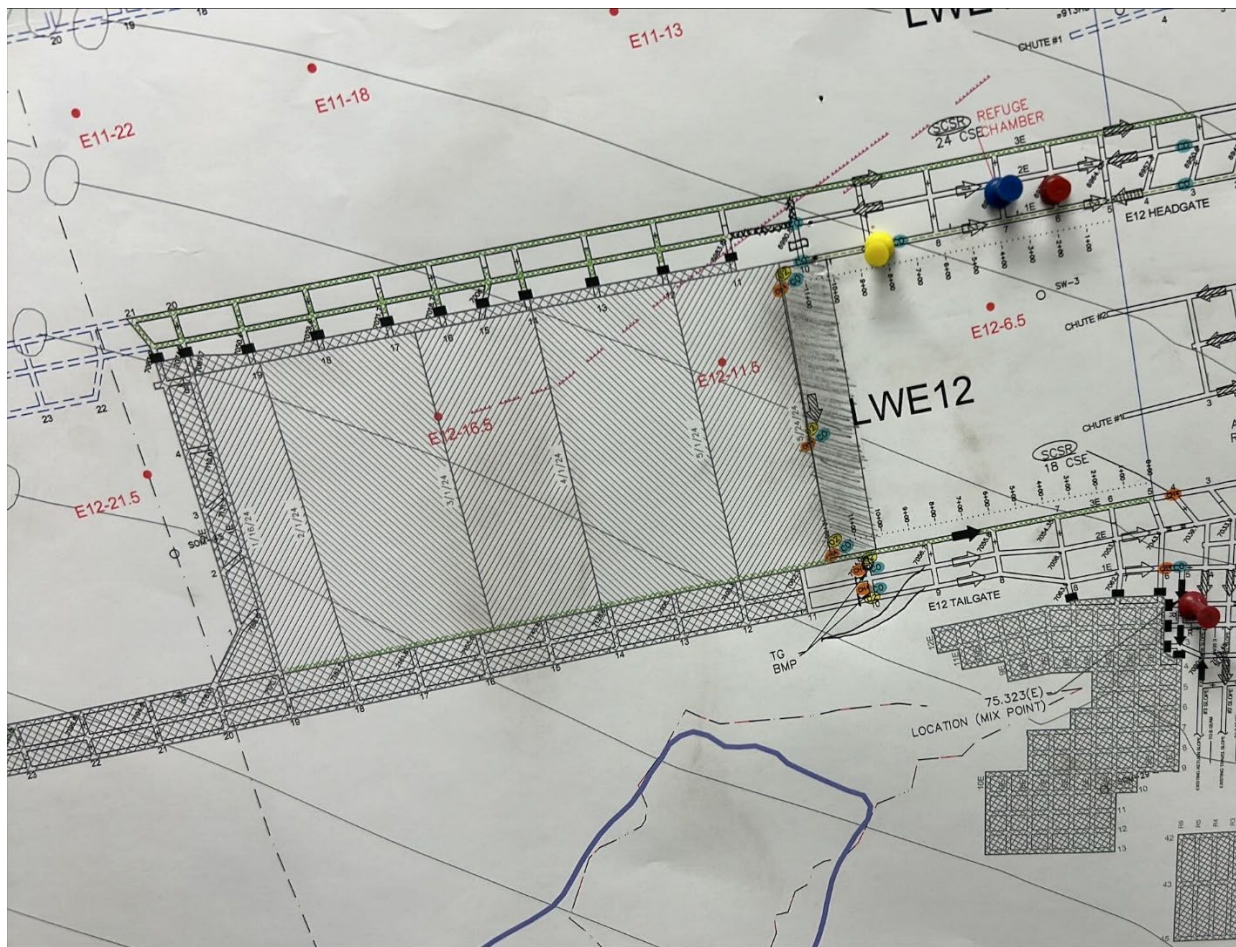
PHOTOGRAPHS

Figure 1: Mine map showing longwall progress in LWE12

Number of Partial Inspection this Fiscal Year: 9

Number of Complete Inspections this Fiscal Year: 4

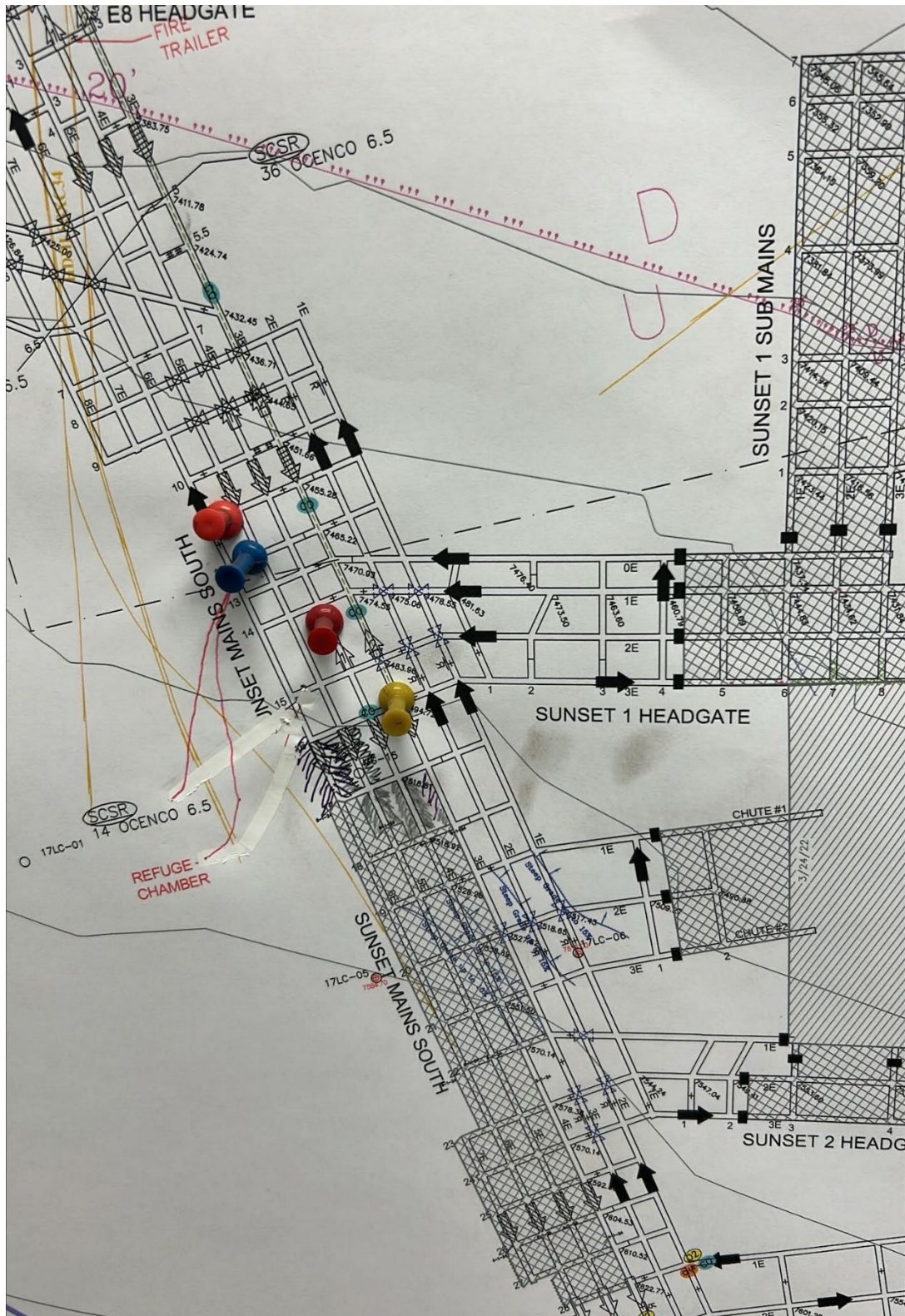


Figure 2: Mine map showing pillaring progress in Sunset Mains South

Number of Partial Inspection this Fiscal Year: 9

Number of Complete Inspections this Fiscal Year: 4



Figure 3: Mine map showing development progress in the B-Seam

Number of Partial Inspection this Fiscal Year: 9

Number of Complete Inspections this Fiscal Year: 4



Figure 4: Excavator, dozer and sheep's foot compactor working on RPEE



Figure 5: Excavator reaching for wet material on RPEE

Number of Partial Inspection this Fiscal Year: 9

Number of Complete Inspections this Fiscal Year: 4



Figure 6: Graded outslope of RPEE



Figure 7: Compaction equipment not in use on RPEE

Number of Partial Inspection this Fiscal Year: 9

Number of Complete Inspections this Fiscal Year: 4



Figure 8: Refuse temporarily stockpiled on RPE

Number of Partial Inspection this Fiscal Year: 9

Number of Complete Inspections this Fiscal Year: 4



Figure 9: RPE pond

Number of Partial Inspection this Fiscal Year: 9

Number of Complete Inspections this Fiscal Year: 4



Figure 10: Lower end of trench for western BCN pipeline segment

Number of Partial Inspection this Fiscal Year: 9

Number of Complete Inspections this Fiscal Year: 4



Figure 11: Upper end of trench for western BCN pipeline segment

Number of Partial Inspection this Fiscal Year: 9

Number of Complete Inspections this Fiscal Year: 4