

## ADDENDUM 2

### Sunrise Metals Inc. - REX Exploration Project – 2023 Annual Report

#### Section 19

19. As required by Colorado Mined Land Reclamation Act and/or Colorado Land Reclamation Act for the Extraction of Construction Materials (C.R.S.34-32-116 or 34-32.5-116), attach a map to this report that accurately depicts the permit boundary, current affected area boundary and location of the acreages specified in items 5-11.

Exploration activities and surface disturbance in 2023 by Sunrise Mineral Inc. were restricted to drilling at three drill sites, and improvements to the existing access road to those drill sites. The total area of surface disturbance was limited to less than 1.0 acres by permit limitations. The areas of disturbance and the reclaimed areas reported in Items 1 through 18 pertain to the activities conducted during 2023.

It is anticipated that, based on earlier submission of a revised NOI exploration plan, submitted to approved by BLM and DRMS, that additional drilling and associated land disturbance have been permitted for activities in 2024, subject to submittal and acceptance of the reclamation bond and a comprehensive storm water management plan (SWMP). This Addendum 2 addresses acreages disturbed and reclaimed in 2023, and presents acreages for anticipated activities and associated surface disturbance for the 2024 exploration season, which will be subject to State and federal regulations.

#### 2023 Exploration Activities

Three drill pads were prepared and occupied for drilling exploration purposes during June and July 2023. Of a larger plan to drill 21 drill holes, the 2023 project was limited to three drill sites. These were sites #7, #8, and #11 on maps of the larger program.

- Drill site #7 was drilled as REX-01
- Drill site #11 was drilled as REX-02, and
- Drill site #8 was drilled as REX-03

The location of the bore holes was determined in datum NAD-83 by hand-held Garmin GPS as follows:

Drill Hole	E NAD83	N NAD83	Depth (ft)	Angle	Start	End
REX-01	698927	4246334	270	-90	7/1/2023	7/10/2023
REX-02	698889	4246299	335	-90	7/10/2023	7/22/2023
REX-03	698976	4246318	150	-90	7/23/2023	7/26/2023
Lay-Down	699296	4246954	0		not used	not used

A lay-down site located near BLM road W-19 was identified and permitted, but it was not prepared for temporary storage of drilling supplies, due to the small number of drill holes. Accordingly, that area, though permitted for surface disturbance was not disturbed, or used for drill materials storage in 2023.

The total area permitted by BLM and DRMS for 2023 was less than 1.0 acre of total surface disturbance. Actual disturbance was less than anticipated, because the drill site for REX-03 did not require surface disturbance other than parking the drill and support equipment at the site, and the lay-down area was not disturbed.

The following table summarizes the actual disturbance for drill sites and the short trails off of the established access road during 2023

2023 Drill Sites:

Drill Hole	E NAD83	N NAD83	Pad Area (acres)	Trail to Pad Area (ft.)	Trail to Pad (acres)	Segment Total (ac.)	Reclaimed (ac.)
REX-01	698927	4246334	0.08	0.0	0.0	0.08	0.08
REX-02	698889	4246299	0.08	50	0.014	0.09	0.094
REX-03	698976	4246318	0.08	110	0.03	0.11	0.11
Lay-Down	699296	4246954	0.0	0.0	0.0	0.00	0.0
						0.28	0.28

No trail to REX-01 was required, as it was laid out immediately adjacent to the main access road. The trail to REX-02 was 50 ft from the access road, and REX-03 was 110 ft from the road. The total disturbed acreage for three drill sites and access to them was 0.3 acres. All three drill sites were reclaimed by July 31 by scarification and implementation of storm water control measures, except that site for REX-03 needed no scarification. The reclamation work did not include sowing of BLM West End seed mix because a source of that mix could not be found. Instead, the writer collected several bags of native seeds from grasses and shrubs surrounding the drill sites and cast those around the drill sites.

For the drill sites, 0.3 acres were disturbed and 0.3 acres were reclaimed (and storm water stabilized), but for the appropriate seed mix. That seed mix has recently been located and will be purchased and broadcast over the drill sites in June 2024, with the intent to establish 70% or more of the native growth distribution in the disturbed areas.

Improvements to the main access road were intermittent over the distance from W-19 Road to the REX-02 drill site. The table below indicates the disturbance required (0.4 acres) to make the access road reasonably passable and to improve certain safety issues.

2023 Improvements to Access Road:

Access Road	Linear Feet	Nominal Width (ft.)	Trail Disturb. (ac.)	Reclaimed (ac.)
	1448	12	0.4	0.0

The road was stabilized with side channels for storm water and water passes constructed at critical places to reduce the propensity for erosion and storm water runoff. The access road berms were not seeded due to the lack of appropriate seed mix, however that will be rectified in June 2024.

The Annual Report requests information related to anticipated activities for the year 2024. BLM and DRMS permits have been received for drilling of 18 additional drill holes at the REX Project.

The maps and table below indicated anticipated surface disturbance and reclamation plan for those drill sites. It is anticipated that the drill sites will be stabilized for storm water and revegetated according to State and federal requirements by September 15, 2024.

Anticipated drill sites are generally aligned in a north-south orientation, along two axes located approximately 1000 ft apart. From the lay-down area on the north to drill site #20 in the south, the 2024 exploration program will extend over approximately one mile in the north-south direction. Accordingly, it is necessary to display the work areas in two maps to show the details.

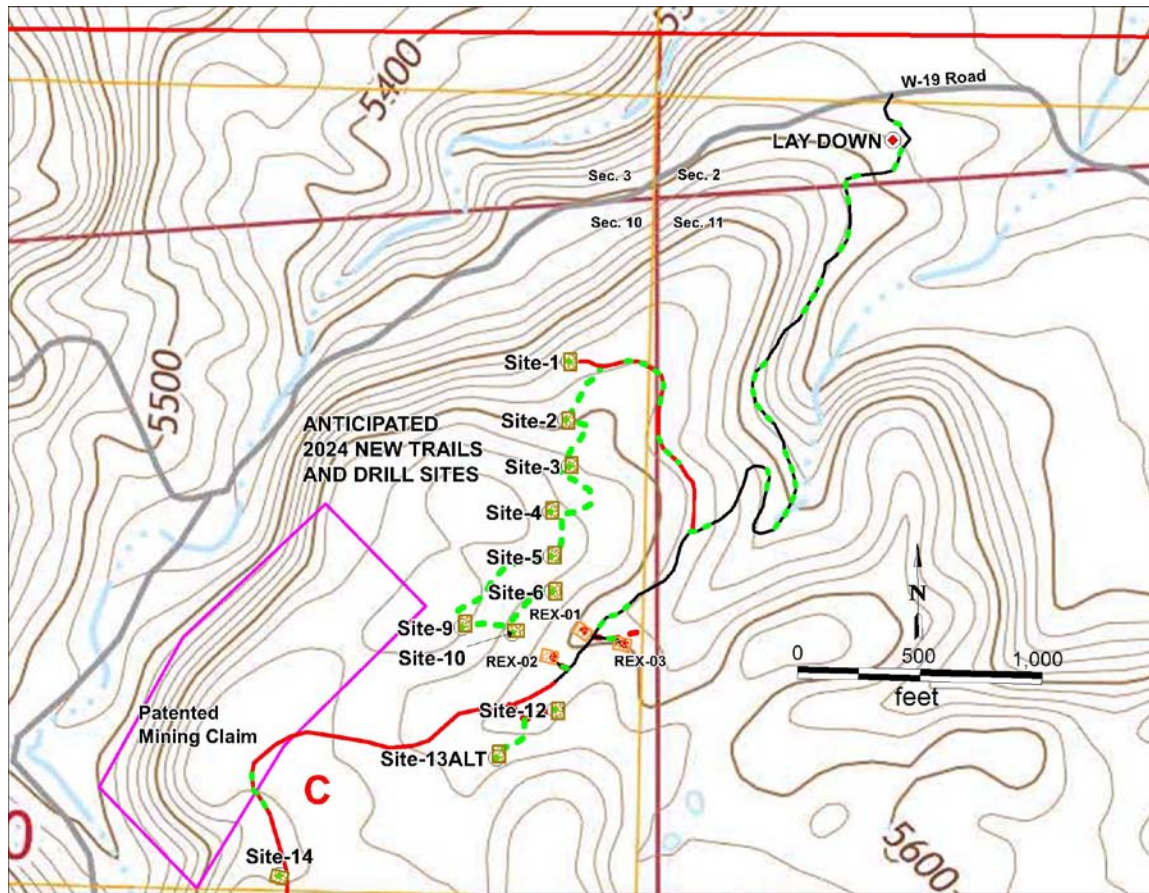


Figure 1: Topographic map of the northern portion of the 2024 drilling plan.

The black line leading south of its intersection with W-19 Road is the main access trail showing portions of the road where surface work was necessary (dashed green portions) for safety and storm water management in 2023. That road work terminated at drill site REX-02.

The red lines indicate existing access roads to the desired drill sites for 2024. Green dashed lines are areas anticipated in need of road improvement. The dashed green lines not associated with underlying red lines indicate new drill trails that will be constructed to the drill sites. The new drill trails are largely north of the area drilled in 2023. Extending south of the map area is existing road segment "C", which requires only intermittent work to provide adequate access.

The following table summarizes the area (in acres) for the proposed 18 drill site construction (1.4 acres) in 2024, and summarizes anticipated surface disturbance for drill trails and drill pads needed to occupy the drill sites (1.0 acre representing total disturbance, less pad areas, lay-down area, and access road improvements). Access road improvements total approximately 0.6 acres and the lay-down area is 0.2 acre.

2024 Anticipated Disturbance for Drill Pads:

2024 Drill Pads	Number of Pads	Total Pad Area (acres)	New Trails to Drill Pads (ft.)	Trails to Pads (acres)	Segment Total (ac.)	To Be Reclaimed (ac.)
18 D-Pads	18	1.4			1.4	1.4
New Trail to Sites 1-10			2472	0.68	0.68	0.68
New Trail to Sites 12-13			394	0.11	0.11	0.11
New Trail to Sites 14-17			0.0	0.0	0	0
New Trail to Sites 18-19			217	0.06	0.06	0.06
New Trail to Sites 20-21			452	0.12	0.12	0.12
Access Rd Improvements			1984	0.44	0.55	0.55
Lay-Down			0.0	0.02	0.02	0.02
					2.94	2.94

A map showing the drill sites and anticipated road work for the southern portion of the 2024 project is shown in Figure 2 below.

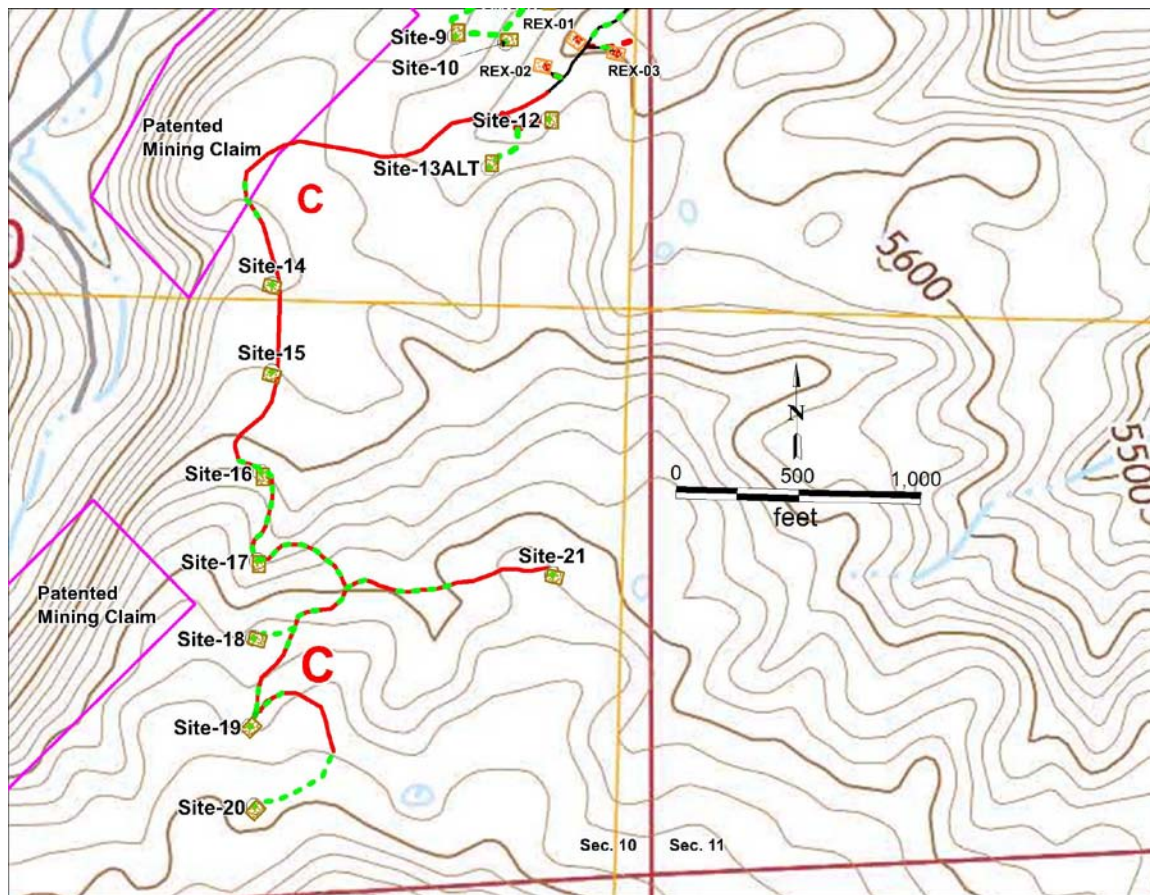


Figure 2: Topographic map of the southern portion of 2024 REX exploration program.

As in Figure 1, the red lines indicate the existing access roads and the dashed green portions represent portions of the access roads where intermittent road work will be required to improve the affects of stormwater. Dashed green lines without the underlying red lines represent new trails needed to access drill sites, such as #12-13, #18, and #20.