

NW Corner Section
 19 Township 22 S
 Range 57 W
 3" ALUM CAP
 LS 9853

Gary Proctor

Legend

- Overhaul Powerlines
- Water Drainage
- DH2
- Survey Lines

Reclaimed Area 2023

Soil from this area may be used on exploration area to improve revegetation

Voluntary reclamation regrading area

Exploratory excavation area. No more than 15 tons to be removed.

Notes: Most topo from site survey. Extreme northern contours from USGS map.

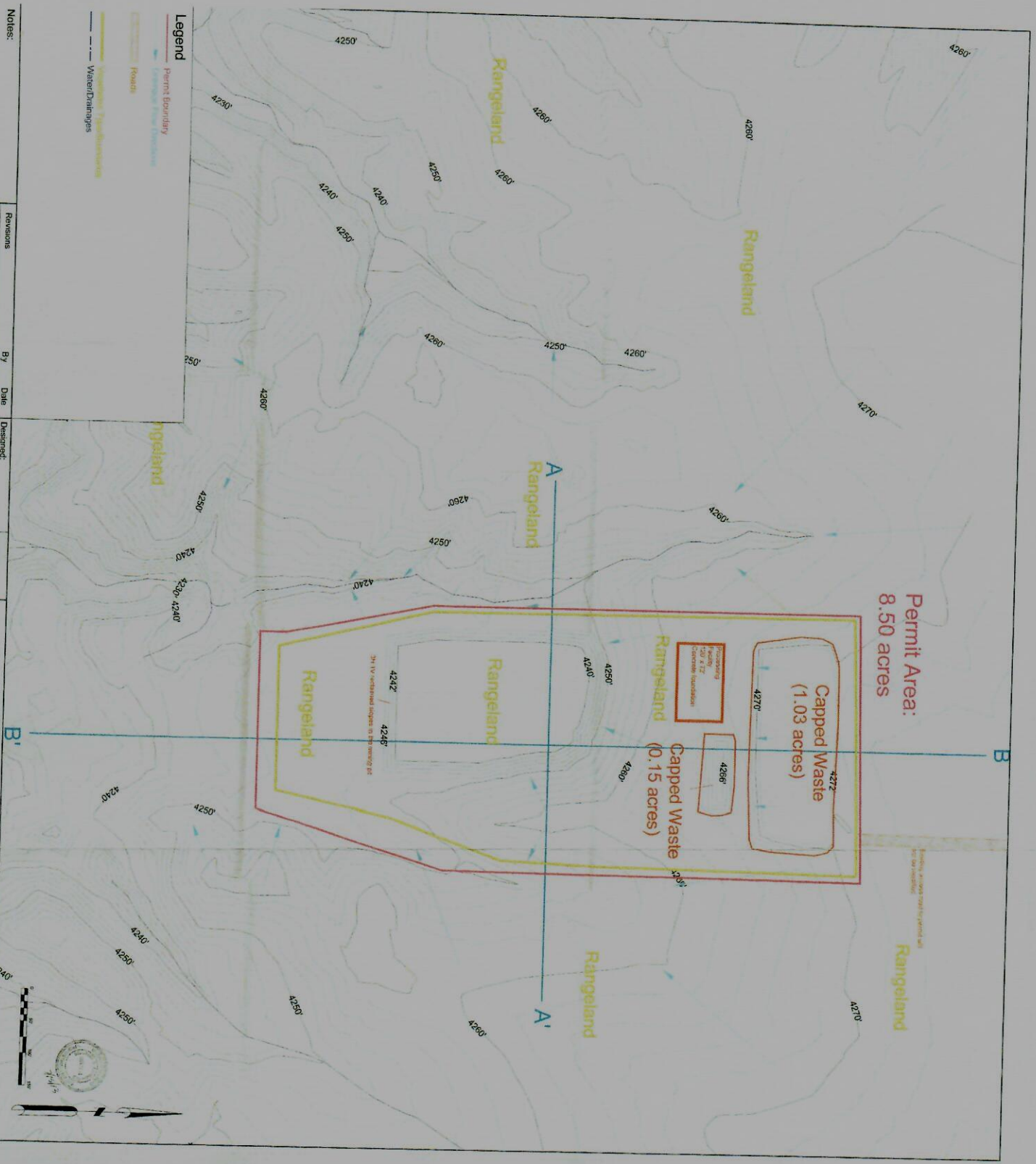
Revisions
 Full Reclamation 2023

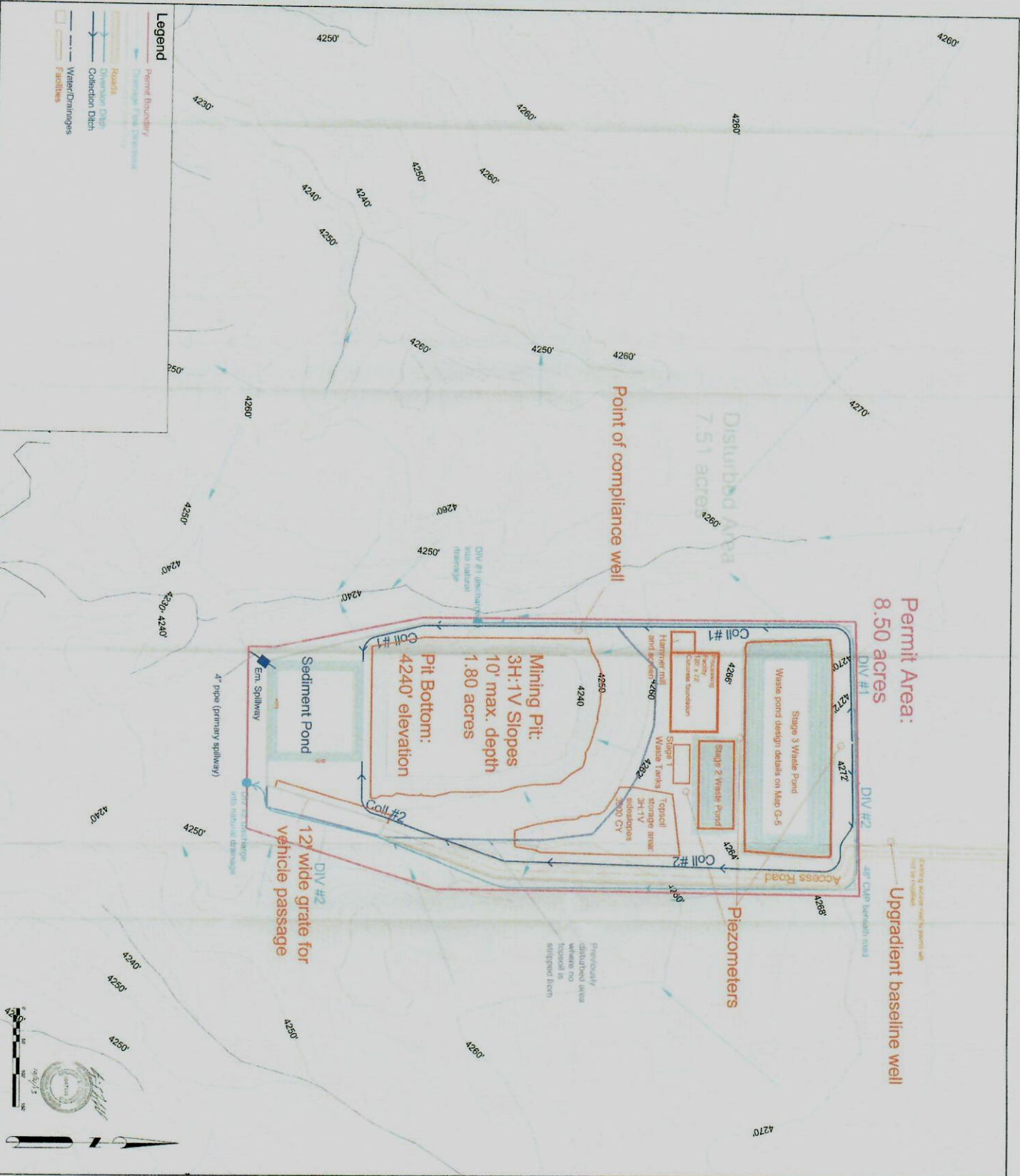
By Date
 Drawn: 05/21/12
 Checked: 1" = 50'
 Approved:

Greg Lewicki And Associates
 1124 Thompson Court
 Durango, CO USA 81301
 Phone: (262) 348-5190
 E-Mail: greg@lewicki.biz

NOI Map
 Precious Mine
 Catalix International, LLC



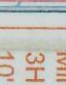




- Legend**
- Permit Boundary
 - Disturbed Area
 - Reverts
 - Diversion Ditch
 - Collection Ditch
 - Water/Drainages
 - Facilities

Revisions		By		Date		Designed:	
						Drawn:	
						Checked:	
						Approved:	

Date		Scale		1" = 50'	
10/24/12					



Greg Lewicki And Associates
11541 Warrington Court
Parker, CO USA 80138
Phone: (303) 346-5136
E-Mail: info@glew.com

C-2: Mining Extents
Precious Mine
Catalix International, LLC

