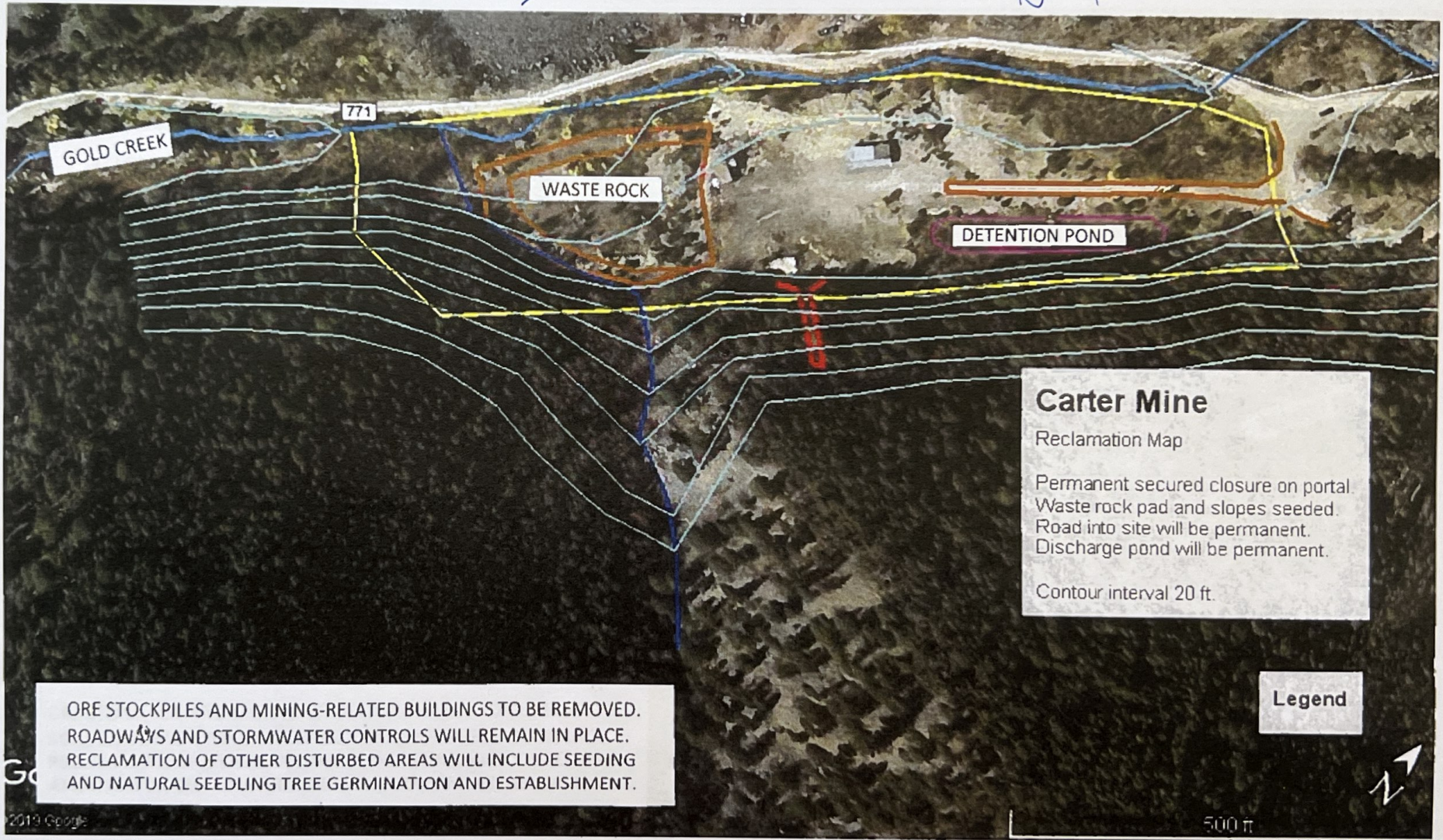


M-2020-014 2023 MAPS
(NO NEW DISTURBANCE)

SUBMITTED BY JAKE WILKINSON
[Signature] 5/10/2024



CARTER MINE RECLAMATION MAP

Map prepared by Bob Oswald, High Country Consulting Services LLC

Bob Oswald
on 1/29/20 (date)

EXHIBIT E.6

1 of 5

Farley Portal

Reclamation Map

Permanent secured closure on portal.
Waste rock pad and slopes seeded.
Roadway to site will remain passable.

Contour interval 20 ft

ORE STOCKPILES AND MINING-RELATED BUILDINGS TO BE REMOVED.
ROADWAYS AND STORMWATER CONTROLS WILL REMAIN IN PLACE.
RECLAMATION OF OTHER DISTURBED AREAS WILL INCLUDE SEEDING
AND NATURAL SEEDLING TREE GERMINATION AND ESTABLISHMENT.

Legend

FARLEY PORTAL RECLAMATION MAP

Map prepared by Bob Oswald, High Country Consulting Services LLC

Bob Oswald
on 1/29/20 (date)

EXHIBIT E.7

2 of 5

Golden Islet Decline

Reclamation Map

Permanent secured closure on portal.
Waste rock pad and slopes seeded.
Roadway through site will remain passable.

Contour interval 20 ft.

ORE STOCKPILES AND MINING-RELATED BUILDINGS TO BE REMOVED.
ROADWAYS AND STORMWATER CONTROLS WILL REMAIN IN PLACE.
RECLAMATION OF OTHER DISTURBED AREAS WILL INCLUDE SEEDING
AND NATURAL SEEDLING TREE GERMINATION AND ESTABLISHMENT.

Legend

200 ft

GOLDEN ISLET DECLINE RECLAMATION MAP

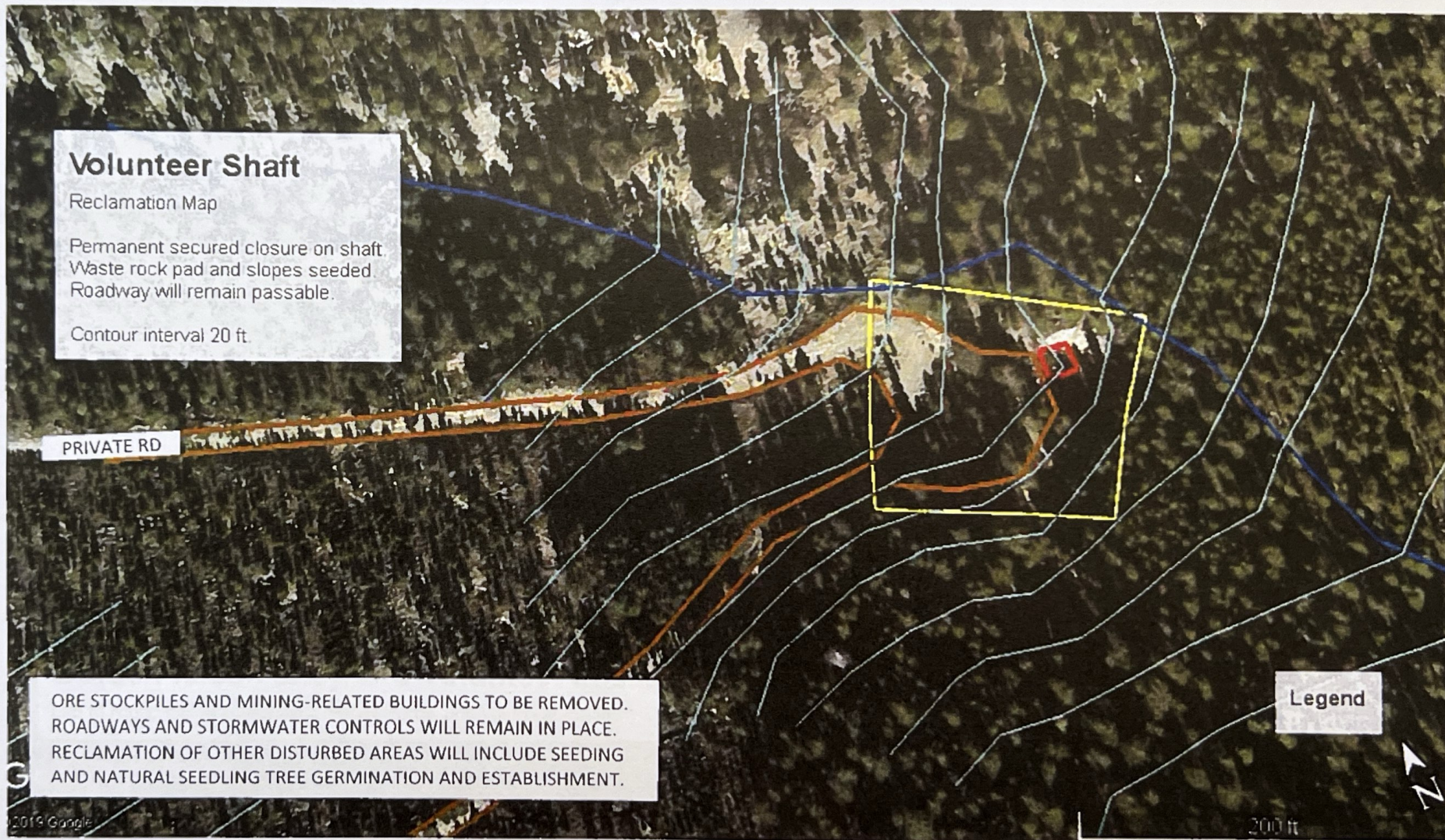
EXHIBIT E.8

Map prepared by Bob Oswald, High Country Consulting Services LLC

Bob Oswald

, on 1/29/20 (date)

3 of 5



VOLUNTEER SHAFT RECLAMATION MAP

EXHIBIT E.9

Map prepared by Bob Oswald, High Country Consulting Services LLC

4 OF 5

Bob Oswald
on 1/29/20 (date)

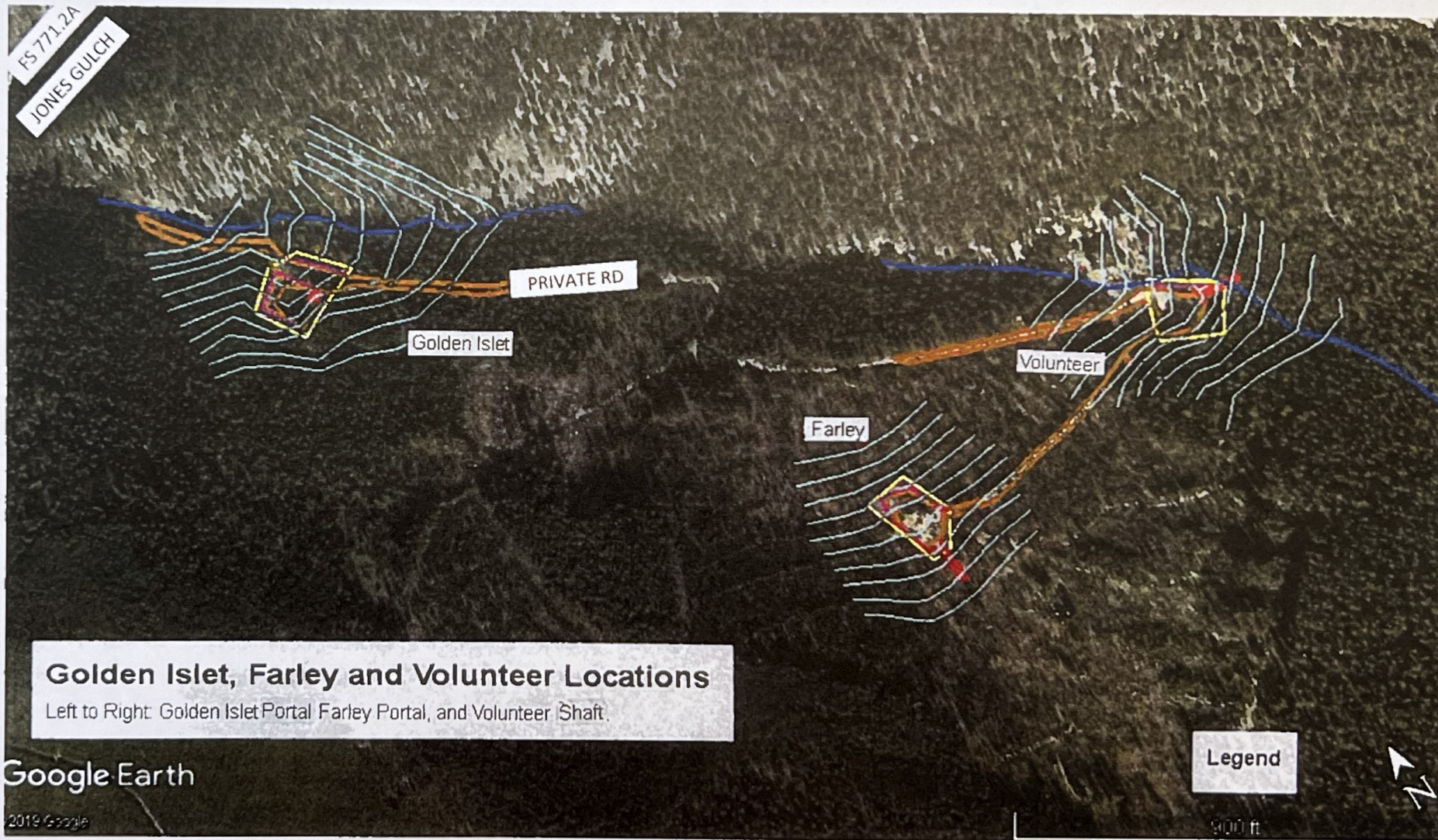


EXHIBIT E.10

Map prepared by Bob Oswald, High Country Consulting Services LLC

S OF S

Bob Oswald
on 1/29/20 (date)