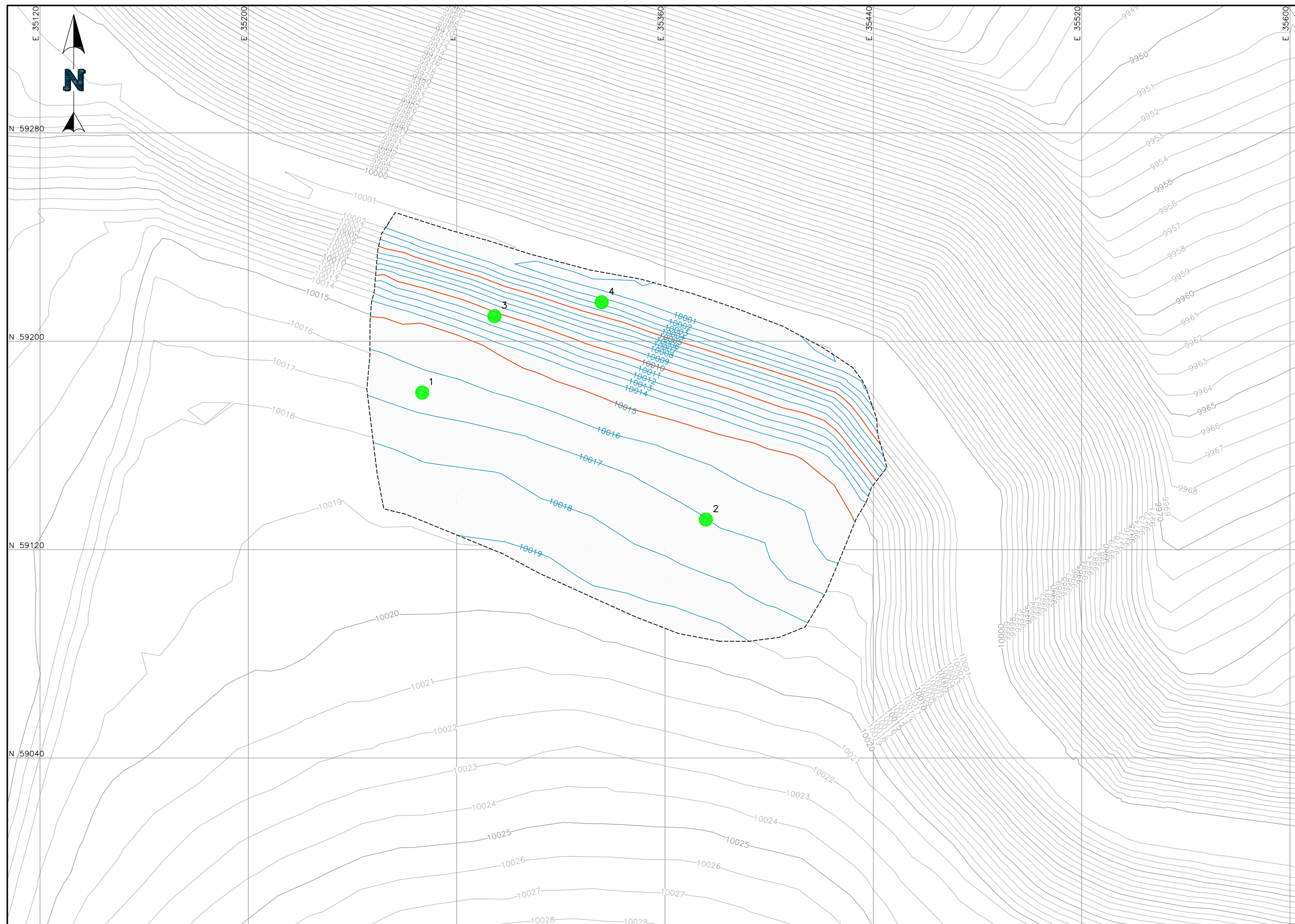



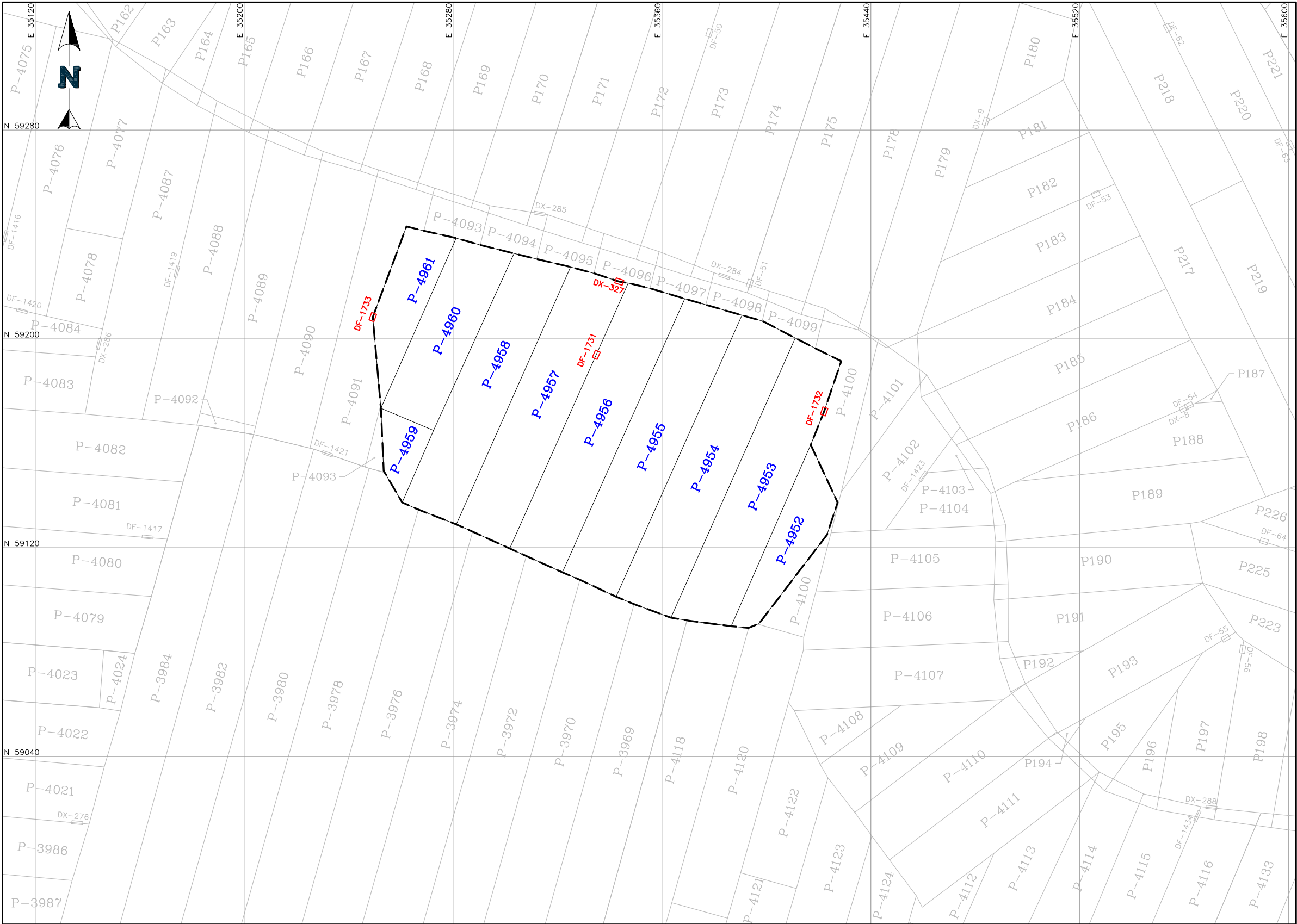


RECORD OF CONSTRUCTION DRAWINGS



##	##	##	##	##	##	APPROVED BY:	DISCLAIMER NEWFIELDS PRODUCED THE INFORMATION PRESENTED ON THIS DRAWING THROUGH THE USE OF AVAILABLE TECHNICAL INFORMATION AND EXPERIENCE. RECEIVING THIS DRAWING DOES NOT GUARANTEE ANY RIGHTS TO EITHER SUCH TECHNICAL INFORMATION OR EXPERIENCE. ANY MODIFICATION OR ADAPTATION OF THE DATA OR DRAWING SHALL BE AT USER'S RISK AND WITHOUT ANY LIABILITY OR LEGAL RESPONSIBILITY TO NEWFIELDS.		CLIENT	CRIPPLE CREEK & VICTOR GOLD MINING COMPAY		
##	##	##	##	##	##	JNM			PROJECT	VLF2 PHASE 3 STAGE A.1 RECERTIFICATION		
##	##	##	##	##	##	CHECKED BY:		TITLE	SLF AS-BUILT AND TESTING			
##	##	##	##	##	##	JNM						
##	##	##	##	##	##	DESIGNED BY:						
0	4/25/24	ISSUED FOR RECORD OF CONSTRUCTION REPORT			JNM	JNM	DRAWN BY:	FILENAME			0106.068.002F	
REV	DATE	DESCRIPTION			TECH	ENG	JNM	DRAWING NO.			REVISION	
								1			0	

P:\Projects\0106.068 CC&V Liner Repair\A-CAD\Figs\0106.068.001F.dwg-4/24/2024 3:58 PM

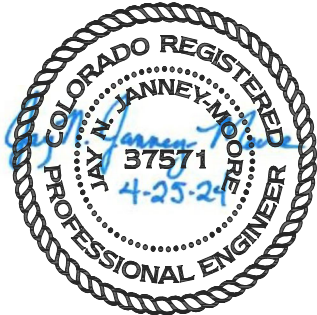


LEGEND:

- P1 PREVIOUSLY CERTIFIED PANEL NUMBER
- DF-1 PREVIOUSLY CERTIFIED FUSION DESTRUCT NUMBER AND REPAIR
- DX-1 PREVIOUSLY CERTIFIED EXTRUSION DESTRUCT NUMBER AND REPAIR
- LIMITS OF GEOMEMBRANE ACCEPTANCE
- P1 PANEL NUMBER
- DF-1 FUSION DESTRUCT NUMBER AND REPAIR
- DX-1 EXTRUSION DESTRUCT NUMBER AND REPAIR


NOTES:

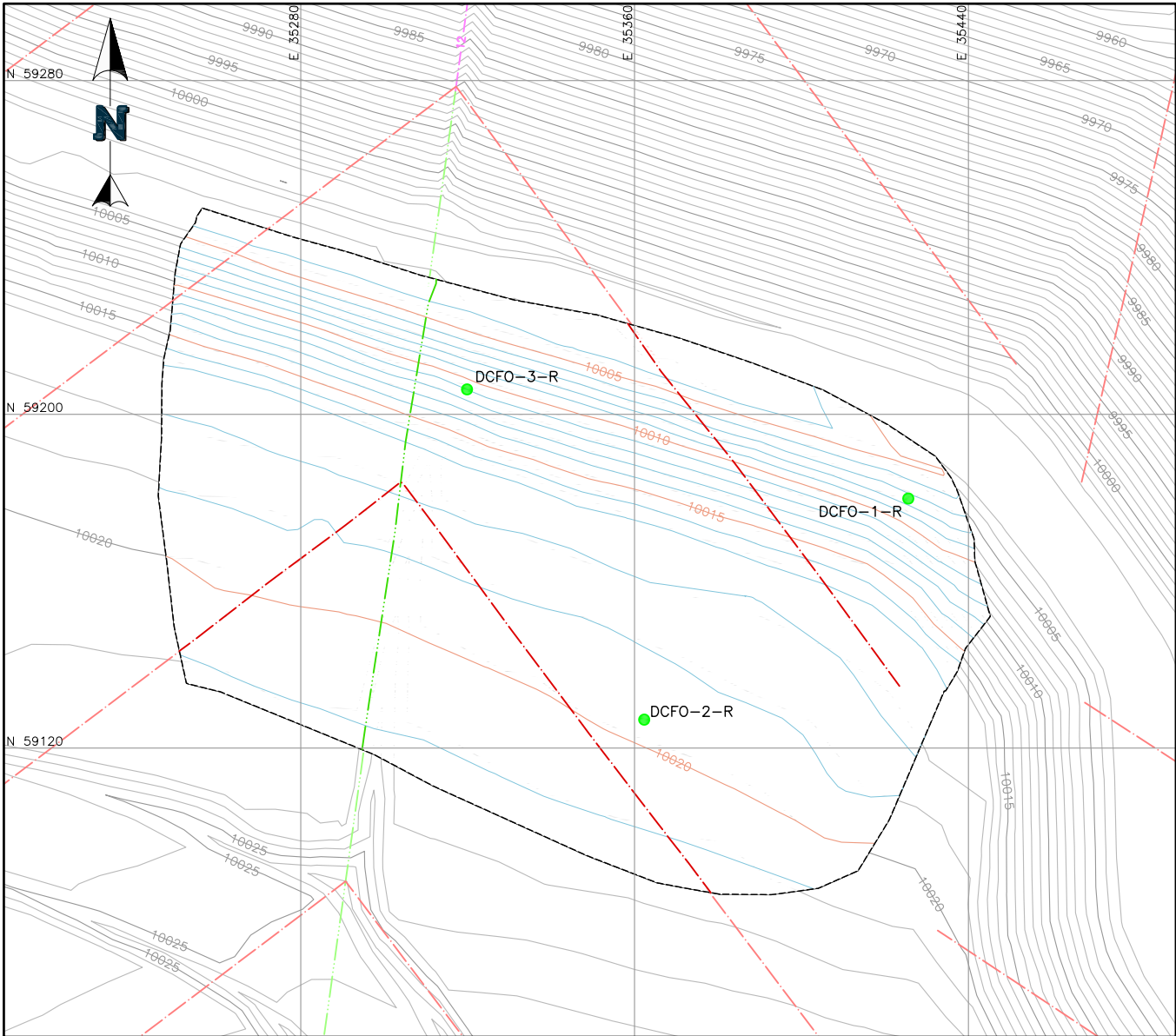
- THE EXISTING GEOMEMBRANE PANEL LAYOUT AND LOCATION OF DESTRUCTS AND REPAIRS WAS DEVELOPED BY NEWFIELDS AS PART OF THE VALLEY LEACH FACILITY PHASE 3 STAGE A.1 RECORD OF CONSTRUCTION REPORT DATED MARCH 3, 2023.
- THE GEOMEMBRANE PANEL LAYOUT, DESTRUCTS AND REPAIRS SHOWN WAS SURVEYED BY FORSIGHT WEST AND PROVIDED TO NEWFIELDS ON APRIL 15, 2024 IN A FILE CALLED "22030-240414-12_LINER REPAIR.TXT" AND "22030-240415-12_LINER REPAIR.TXT".



##	##	##	##	##	##
##	##	##	##	##	##
##	##	##	##	##	##
##	##	##	##	##	##
##	##	##	##	##	##
0	4/25/24	ISSUED FOR RECORD OF CONSTRUCTION REPORT		JNM	JNM
REV	DATE	DESCRIPTION		TECH	ENG

APPROVED BY:	JNM	DISCLAIMER NEWFIELDS PRODUCED THE INFORMATION PRESENTED ON THIS DRAWING THROUGH THE USE OF AVAILABLE TECHNICAL INFORMATION AND EXPERIENCE. RECEIVING THIS DRAWING DOES NOT GUARANTEE ANY RIGHTS TO EITHER SUCH TECHNICAL INFORMATION OR EXPERIENCE. ANY MODIFICATION OR ADAPTATION OF THE DATA OR DRAWING SHALL BE AT USER'S RISK AND WITHOUT ANY LIABILITY OR LEGAL RESPONSIBILITY TO NEWFIELDS.
CHECKED BY:	JNM	
DESIGNED BY:	JNM	
DRAWN BY:	JNM	

 NewFields		CLIENT	CRIPPLE CREEK & VICTOR GOLD MINING COMPAY	
PROJECT		VLF2 PHASE 3 STAGE A.1 RECERTIFICATION		
TITLE		GEOMEMBRANE PANEL LAYOUT		FILENAME 0106.068.001F
				DRAWING NO. 2

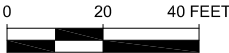


LEGEND:

- EXISTING TOP OF DCF (2023)
- AS-BUILT TOP OF DCF (2024)
- AS-BUILT 4 INCH CPE PERFORATED PIPE (2023)
- AS-BUILT 4 INCH CPE PERFORATED PIPE (2024)
- AS-BUILT 8 INCH CPE PERFORATED PIPE (2023)
- AS-BUILT 8 INCH CPE PERFORATED PIPE (2024)
- AS-BUILT 12 INCH CPE PERFORATED PIPE (2023)
- DCFO-1-R DCFO SAMPLE LOCATION

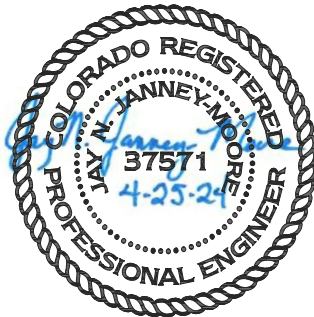
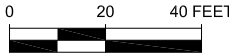
NOTES:

- THE EXISTING DCF SURVEY WAS DEVELOPED BY NEWFIELDS AS PART OF THE VALLEY LEACH FACILITY PHASE 3 STAGE A.1 RECORD OF CONSTRUCTION REPORT DATED MARCH 3, 2023.
- THE AS-BUILT DCF WAS SURVEYED BY FORSIGHT WEST AND PROVIDED TO NEWFIELDS ON APRIL 17, 2024 IN A FILE CALLED "22030-240417-12_DCF_ASBLT_REPAIR_AREA.TXT".
- THE AS-BUILT PIPING WAS SURVEYED BY FORSIGHT WEST AND PROVIDED TO NEWFIELDS ON APRIL 15, 2024 IN A FILE CALLED "22030-240415-12_LINER_REPAIR.TXT".



ISOPACH LEGEND:

- DEPTH OF DCF BETWEEN 0'-2'
- DEPTH OF DCF BETWEEN 2'-3'
- DEPTH OF DCF GREATER THAN 3'



				APPROVED BY: JNM		DISCLAIMER		NewFields		CLIENT Cripple Creek & Victor Gold Mining Company	
				CHECKED BY: JNM		NEWFIELDS PRODUCED THE INFORMATION PRESENTED ON THIS DRAWING THROUGH THE USE OF AVAILABLE TECHNICAL INFORMATION AND EXPERIENCE. RECEIVING THIS DRAWING DOES NOT GUARANTEE ANY RIGHTS TO EITHER SUCH TECHNICAL INFORMATION OR EXPERIENCE. ANY MODIFICATION OR ADAPTATION OF THE DATA OR DRAWING SHALL BE AT USER'S RISK AND WITHOUT ANY LIABILITY OR LEGAL RESPONSIBILITY TO NEWFIELDS.		PROJECT VLF2 PHASE 3 STAGE A.1 LINER REPAIR		FILENAME 0106.068.007F	
				DESIGNED BY: JNM				TITLE DCF AND PIPING AS-BUILT AND ISOPACH		DRAWING NO. 3	
				DRAWN BY: KP						REVISION 0	
0		4/25/24		ISSUED FOR RECORD OF CONSTRUCTION REPORT		KP JNM					
REV		DATE		DESCRIPTION		TECH ENG					