

Permit M-1980-244

Cresson Project Amendment 14

Appendix 12

Emergency Response Plan (ERP)

EMERGENCY RESPONSE PLAN CCV

April 12, 2023

Department	THIS DOCUMENT IS UNCONTROLLED IN HARD COPY FORMAT		Doc Id: NA-CCV-H&S-PLAN-1775
H&S	Date of This Issue: April 12, 2023	Date of Next Review April 12, 2026	Page 1 of 46

Table of Contents

1.0	PURPOSE	4
2.0	SCOPE	4
3.0	DEFINITIONS AND ACRONYMS	4
3.1	Definitions	4
3.2	Acronyms	5
4.0	ROLES AND RESPONSIBILITIES.....	6
4.1	Document Owner	6
4.2	Responsible Roles and Position-Holders	6
5.0	DIRECTION.....	7
5.1	Objectives.....	7
5.2	Communication	7
5.4	Emergency Equipment Location.....	9
5.5	Emergency Levels	9
5.6	Mayday Procedures to follow in the event of an Emergency	9
5.7	Responsibilities during the Mayday	10
5.8	Newmont Rapid Response System	10
5.9	Evacuation Procedures	12
5.10	Stress Management:.....	15
5.11	Bomb Threat	15
5.12	Labor/Civil Disturbances and Distraught Persons.....	16
5.13	Fires	18
5.14	Emergency Response Procedures, Leaks, Spills, or Releases:.....	22
5.15	Medical Emergencies/Accidents	29
5.16	Air Ambulance Landing Requirements & Coordinates	30
5.17	Fatal/Potentially Fatal Accidents.....	31
5.18	Premature Blast or Unplanned Explosion	33
5.19	Motor Vehicle Accidents.....	34
5.20	Equipment/Light Vehicle/Person in a void.....	34
5.21	Severe Weather Conditions/Natural Disasters	34
5.22	Earthquakes	35
5.23	Emergency Utilities Shutdown.....	36
5.24	Off Site Support Training and Drills	37
5.25	Procedures for Updating and Revising the Plan.....	39

Department	THIS DOCUMENT IS UNCONTROLLED IN HARD COPY FORMAT		Doc Id: NA-CCV-H&S-PLAN-1775
H&S	Date of This Issue: April 12, 2023	Date of Next Review April 12, 2026	Page 2 of 46

- List of Appendices
- Appendix A – Emergency Information
- Appendix B – Exclusion Zone Maps

Department	THIS DOCUMENT IS UNCONTROLLED IN HARD COPY FORMAT		Doc Id: NA-CCV-H&S-PLAN-1775
H&S	Date of This Issue: April 12, 2023	Date of Next Review April 12, 2026	Page 3 of 46

1.0 PURPOSE

This plan has been developed and compiled by the Health & Safety (H&S) Department. It contains practical rules, procedures and allocation of responsibilities for a better planning of emergency response and control.

The Emergency Response Plan is to be provided to all internal areas of management and contractors. Compliance with the relevant provisions of the Emergency Response Plan during an emergency will facilitate information flow and provide support and assistance. The Emergency Response Plan will be reviewed following any incident requiring the implementation of the Plan, to determine if the planned response procedures were adequate or require revision.

To familiarize all employees with the contents of this ERP, it is essential for the supervisors to review the ERP together with their employees:

- (a) When they are new or when they have been transferred to a new area.
- (b) When their duties and the responsibilities assigned to them within the department have been changed or modified.
- (c) When they are assigned to a specific duty within this Plan.

2.0 SCOPE

This Plan applies to the Newmont - Cripple Creek & Victor functional areas, operations, offices, including employees, vendors, visitors and contractors within the scope of the Integrated Management System (IMS).

3.0 DEFINITIONS AND ACRONYMS

3.1 Definitions

Approved is certified to meet the minimum standards established by the H&S Department. All PPE used at Cripple Creek & Victor operations shall meet at least the American National Standards Institute (ANSI) standards, American Society for Testing and Materials (ASTM), or other international or local standards which comply with or exceed those standards.

General Rules are rules which apply to all employees, vendors, visitors, and contractors regardless of where they work or what they do.

Job Specific is requirements directly associated with a specific job, task, or occupation.

Site refers to a specific location of operations.

Emergencies are an undesired event that generates real or potential dangers/risks, at Cripple Creek & Victor Operations (on site or off site), that directly effect:

- (A) The people: the health and welfare of Newmont employees, the health and welfare of members of the general public.
- (B) The assets.
- (C) The livelihood.
- (D) The environment.
- (E) The reputation of Newmont.

An event need not be directly related to Newmont operations to adversely affect Newmont reputation. Public, media and/or government perceptions about our industry and its products can have a long-term

Department	THIS DOCUMENT IS UNCONTROLLED IN HARD COPY FORMAT		Doc Id: NA-CCV-H&S-PLAN-1775
H&S	Date of This Issue: April 12, 2023	Date of Next Review April 12, 2026	Page 4 of 46

impact. All major occurrences of the type described below, regardless of cause, therefore constitute an emergency.

3.2 Acronyms

AMS	Atypical Measles Syndrome
ANSI	American National Standards Institute
ASTM	American Society for Testing and Materials
BLEVE	Boiling Liquid Expanding Vapor Explosion
BLM	Bureau of Land Management
CAB	Circulation, Airway & Breathing
CCFD	Cripple Creek Fire Department
CIC	Carbon in Columns
CPR	Cardiopulmonary resuscitation
DOT	Department of Transportation
EMR	Emergency Medical Responder
EMT	Emergency Medical Technician
GEO	Geology
HCl	Hydrochloric Acid
HCN	Hydrogen Cyanide
H&S	Health and Safety
IC	Incident Commander
IMS	Integrated Management System
ISEA	International Safety Equipment Association
LPG	Liquid Petroleum Gas
MCC	Mechanical Control Center
MRT	Mine Rescue Team
MSHA	Mine Safety and Health Administration
SDS	Safety Data Sheet
NNA	Newmont North America
NRR	Newmont Rapid Response
PPE	Personal Protective Equipment
RRT	Regional Response Team
SCBA	Self Contained Breathing Apparatus
S&ER	Social & Environmental Responsibility
SRT	Site Response Team
SWTC	Southwest Teller County
TARP	Trigger Action Response Plan
WAD	Weak Acid Dissociable

4.0 ROLES AND RESPONSIBILITIES

4.1 Document Owner

H&S Manager

4.2 Responsible Roles and Position-Holders

4.2.1 General Responsibilities for All Employees

The following are general responsibilities for all employees to follow in the event of an emergency however a person's specific role and responsibilities may differ:

1. Notify the supervisor of the emergency situation. See Mayday Procedure
2. Report the emergency as described in 5.2 of this plan.
3. Provide help until the appropriate response team(s) arrives. Never place yourself or others in danger, especially during fires, or chemical emergencies.
4. For emergency evacuations follow the procedures outlined in 5.9 of this plan.
5. If an alarm is sounded or you are instructed to do so, evacuate the area to designated assembly points and stay there until you are instructed to leave.
6. If an evacuation takes place, follow the directions. Make sure you and any visitors you are responsible for are accounted for by your supervisor.
7. If you are responsible to perform shutdown procedures, know your responsibilities and perform them accordingly.
8. If responders are already at the scene of an emergency, do not go to the scene to watch or help unless you are personally called to the scene.

4.2.2 General Manager

The General Manager is responsible for the overall management of an emergency. This does not mean however they must direct all parties involved. Rather, the General Manager may use key personnel to achieve a satisfactory outcome to an emergency situation. The General Manager shall evaluate the emergency and determine whether the Rapid Response Team is to be mobilized or whether local expertise will suffice.

4.2.3 Managers/General Foreman/Supervisors

In an emergency each Manager/General Foreman and Supervisor will check their own area of responsibility. If the emergency arises in their area or will affect their area they will remain there and report to the Site Manager and assist with the coordination of emergency response efforts. When the appropriate Manager is not on site their designate will assume responsibility for their department, manage the area and provide support to mine rescue. Preserve the scene evidence/security. Prevent secondary hazards.

4.2.4 Health and Safety Manager

Responsible for regulatory reporting (immediately). Liaise with the Site Rapid Response Team, Health & Safety Representatives, Emergency Response Teams and relevant personnel. Coordinate assistance from outside organizations if required and disseminates warnings and information as required.

Department	THIS DOCUMENT IS UNCONTROLLED IN HARD COPY FORMAT		Doc Id: NA-CCV-H&S-PLAN-1775
H&S	Date of This Issue: April 12, 2023	Date of Next Review April 12, 2026	Page 6 of 46

4.2.5 Security

Provide crowd control at the scene of the emergency, secure and guard the scene of the accident as directed by management. Security will also restrict access to the emergency scene or the mine site and make calls to outside agencies as directed by management.

4.2.6 Mine Rescue Team Coordinator

The Mine Rescue Team Coordinator or their designate must be contactable at all times, both during office hours and after hours. During office hours, the MRT Coordinator must be in close proximity to a radio, cell phone or telephone. As a result, the MRT Coordinator may not actually direct the operation of the mine rescue teams; the Team Captains will, where at all possible, seek the MRT Coordinators approval prior to commencing any interventions that could endanger either Mine Rescue Team Members or other personnel. The Captain has the right to refuse any tasks they consider is an unacceptable risk to the team.

4.2.7 Mine Rescue Team Captain

The Mine Rescue Team Captains report directly to the MRT Coordinator or their designee in an emergency. The Mine Rescue Team Captain directs action in the emergency, initiates appropriate action to minimize the effects of injury at the accident scene and care for those injured. The Captain has the right to refuse any tasks he considers are an unacceptable risk to the team. Team Captains will coordinate all efforts with the supervisor in charge for a unified command.

4.2.8 Mine Rescue Team

The Mine Rescue Team will report immediately to the Mine Rescue Team Captain / Co Captain unless already involved at the scene of the emergency. Personnel with appropriate First Aid training may be required to stand by to treat the injured and will report to the Team Captain. Team members also have the right to refuse any assignment they feel is unsafe.

5.0 DIRECTION

All employees, vendors, contractors, and visitors traveling/working on site shall comply with and ensure personnel accountable to them comply with the following requirements of this plan.

5.1 Objectives**5.1.1** The objectives of this Emergency Response Plan are to:

- (a) Provide an effective response to emergency situations.
- (b) Establish responsibilities levels and support coordination.
- (c) Minimize the effect of emergencies on personnel, on the surrounding communities, and on public.
- (d) Prevent injury, property damage, and damage to equipment, damage to environment and losses to process that result from emergencies.
- (e) Ensure the cooperation with government and outside agencies.
- (f) Provide suitable information to be conveyed to the public using the external relations contact.

5.2 Communication**5.2.1** Emergency Communications: In the Event of an Emergency:

- (a) Immediately establish Radio contact through the Mayday procedure.
- (b) All emergencies shall be reported to Ironclad security at 719-689-4127 or R-1 on the radio.

Department	THIS DOCUMENT IS UNCONTROLLED IN HARD COPY FORMAT		Doc Id: NA-CCV-H&S-PLAN-1775
H&S	Date of This Issue: April 12, 2023	Date of Next Review April 12, 2026	Page 7 of 46

- (c) Mine Ops and Process Ops dispatch will assist in verifying a Mayday to Ironclad security by relaying information that will assist in the emergency control and response.

5.2.2 Remember, do not hang up until this information has been given and remain on the line to make further arrangements.

- (a) Do not call the local media to report the emergency. This will be taken care of by External Relations.
- (b) Do not call the family or friends of the persons involved in the emergency (Management will take charge of making such calls).
- (c) Do not take pictures or videos.
- (d) Social media postings i.e. Facebook, Twitter and etc. are strictly prohibited.
- (e) Do not call the government agencies (Management will take charge of making such calls).

5.2.3 Communications Failure:

There are several conceivable situations that could result in the loss of telephone communications from the mine. They include:

- (a) The incoming telephone line being severed
- (b) Major snowstorms
- (c) Rangeland fires
- (d) Power failure
- (e) Windstorms
- (f) Lighting storms

5.2.4 Communications may therefore fail when they are most needed, i.e. in an emergency situation. Even if this is not the case, efficient operation of the mine is severely compromised without communications and a delay in notifying the relevant persons/agencies (Electrical Supervisor, IT Department, etc.) further exacerbates the problem.

5.2.5 Alternate Communication Plan:

- (a) Cell Phone
- (b) Radio communication with Teller County Sheriff's Office, Dispatch, Cripple Creek Fire Dept. and Cripple Creek Ambulance.

5.3 Emergency Notification and Callout Process

5.3.1 Provide the same information as outlined under, Reporting an Emergency

5.3.2 Employee: Notifies their supervisor.

5.3.3 Supervisor:

- (a) Notifies security, their immediate supervisor, the area manager, and health and safety.
- (b) The immediate supervisor will limit available information to the fact of the accident, having made positive identification of any injured employee.
- (c) Radio discussions of the accident will be minimized and names and equipment numbers will not be broadcast.

5.3.4 The immediate supervisor will preserve the accident scene and all physical evidence until relieved of this responsibility.

5.3.5 Accident site visits will be limited to only necessary emergency response personnel, security personnel and appropriate management.

Department	THIS DOCUMENT IS UNCONTROLLED IN HARD COPY FORMAT		Doc Id: NA-CCV-H&S-PLAN-1775
H&S	Date of This Issue: April 12, 2023	Date of Next Review April 12, 2026	Page 8 of 46

5.3.6 General Manager, Manager, Superintendent, General Foreman, reports via chain of command to implement Rapid Response and SRT Leaders.

5.3.7 Security: Initiates the following dispatches for the appropriate response.

- (a) Medical: Company medical responders and or Teller County EMS.
- (b) Fire: Company MRT. and or Cripple Creek Fire Department.
- (c) Rescue/Hazmat: MRT
- (d) Mutual Aid: Combined MRT or Teller County Cripple Creek
- (e) Health and Safety Manager or on call S&ER representative.

5.3.8 Cripple Creek & Victor – Manager, General Foreman, Superintendent, General Manager reports via chain of command to implement the Rapid Response and MRT.

5.4 Emergency Equipment Location

5.4.1 Medical Emergency Response Vehicle: is located in the Heavy Mobile Equipment (HME) shop, stocked with medical and rescue gear.

5.4.2 ARFF Fire Truck: Located on ground level of Mill (West side) behind roll up door near lime silo. Equipped with 3200 gallons of water, 400 gallons of AFFF alcohol resistant foam, 550 pounds of dry chemical, portable fire water tank, various sizes of firefighting hoses and nozzles, and SCBA's and spare bottles.

5.4.3 Competition Travel Trailer: Located on basement level of Mill (West side) behind roll up door. Equipped with rope rescue equipment that can be used off site or in support of the Medical Emergency Response Vehicle as required.

5.4.4 Hazmat Response Trailer: Located on basement level of Mill (West side) behind roll up door next to Competition Travel Trailer. Equipped with Hazmat Decontamination supplies.

5.5 Emergency Levels

5.5.1 Level 1 “Low”: A “Low Level” emergency is an on-site or off-site emergency. It can be controlled by area personnel from the affected area.

5.5.2 Level 2 “Medium”: A “Medium Level” emergency cannot be handled by the personnel of the affected area. The MRT is required. It does not exceed the resources of the site.

5.5.3 Level 3 “High”: A “High Level” incident is one which exceeds the resources available at the scene of the emergency and outside help such as government, industry and/or corporate is required.

5.5.4 The highest severity rating for any individual risk factor determines the overall severity rating of the emergency.

5.6 Mayday Procedures to follow in the event of an Emergency

5.6.1 Examples requiring a Mayday call:

- (a) Emergency medical condition requiring immediate medical attention
- (b) Event reasonably expected to cause a life threatening injury

Department	THIS DOCUMENT IS UNCONTROLLED IN HARD COPY FORMAT		Doc Id: NA-CCV-H&S-PLAN-1775
H&S	Date of This Issue: April 12, 2023	Date of Next Review April 12, 2026	Page 9 of 46

- (c) Event which creates conditions that are an immediate danger to life safety
- (d) Equipment or structure Fire

5.6.2 Examples not requiring a Mayday call:

- (a) Minor first aid injuries with no life threat
- (b) Minor equipment damage with no injury and no immediate danger to life safety
- (c) Minor Geotechnical event which does not have potential to affect people or operations

5.6.3 When an emergency situation occurs, the person involved in or discovering the emergency shall call Ironclad Security on the radio and request a Mayday be called for an emergency.

5.6.4 When the Mayday is heard over the radio, all personnel are to safely cease activities and listen to the radio. Mobile equipment operators, haul truck drivers, and all other moving mine site traffic are to pull to the left edge of the road in a safe location and come to a stop. The only exception to this is in the area of the mills and where only mobile equipment needs to come to a stop. Other equipment that needs to shut down in the Mill area will be determined by the area supervisor on shift.

5.6.5 The person calling the Mayday will give security the following information:

- (a) Location of the Emergency
- (b) Nature of the Emergency
- (c) Number of personnel involved
- (d) Emergency personnel needed
- (e) Any other pertinent information

5.6.6 When the Mayday is called, Ironclad security will ask for the radio, followed by an announcement of 'Mayday' 3 times and where the Mayday is located. The Mayday will continue to run on Channel 1 at that time. When requested the Mayday will switch to the MRT channel. When the Mayday is cleared, security will ask for the radio followed by an announcement stating the Mayday is clear.

5.7 Responsibilities during the Mayday

5.7.1 Once a Mayday has been called, all personnel shall maintain radio silence unless they are involved in the emergency response to the Mayday, see an unsafe condition requiring immediate action, or have another emergency situation.

5.7.2 All equipment and vehicles not involved in the emergency response shall remain in the stop mode allowing clear access for emergency vehicles and responders, until the Mayday situation has been stabilized and the Mayday has been cancelled by the responsible personnel.

5.7.3 The supervisors or their designee will account for their personnel while waiting for further information on the Mayday any responders that respond to the incident must notify their supervisor that they are responding so that they are not counted as missing.

5.8 Newmont Rapid Response System

5.8.1 Newmont has a management system called "Rapid Response" (NRR). Management is given training and a structured process to provide guidance in the event of an incident, which may have the potential to seriously affect the Company and its reputation.

5.8.2 The Newmont Rapid Response (NRR) is designed to begin coordinating at the time an event occurs and continues until the requirement for management and operations no longer exists. The

Department	THIS DOCUMENT IS UNCONTROLLED IN HARD COPY FORMAT		Doc Id: NA-CCV-H&S-PLAN-1775
H&S	Date of This Issue: April 12, 2023	Date of Next Review April 12, 2026	Page 10 of 46

structure of the NRR can be established and expanded depending upon the changing conditions of the incident.

5.8.3 Rapid Response achieves this by:

- (a) Providing appropriate support to an affected site and/or region in its technical response to an event.
- (b) Minimizing the impact on the Company by considering environmental, strategic, legal, financial and public image aspects of the incident.
- (c) Ensuring communications are being carried out in accordance with legal and ethical requirements.
- (d) Identifying actions which need to be taken on a broader scale that cannot be envisioned by those involved in overcoming the immediate hazards

5.8.4 Site Response Team (SRT) Organization:

The SRT is commanded by a Leader, who is the General Manager of Operations; there is a list of alternates in case the Manger is not available. SRT is placed on alert in case of a Medium Level Emergency. During a High Level Emergency all the activities will be led by the SRT Leader.

5.8.5 Responsibility of the Site Response Team:

The Site Response Team (SRT) is responsible for the overall management of the emergency situation. This includes all the human resources, equipment, material and supplies, communication, production and decisions at the site. When necessary, the SRT will have external support divisions. The highest severity rating for any individual risk factor determines the overall severity rating of the emergency.

	Low	Medium	High
Response by Outcome	SRT	SRT & RRT	SRT, RRT & CRT
Personal injury	Injury involving hospitalization	Single fatality or multiple injuries	Multiple fatalities
Missing personnel	One or more people not accounted for	One or more people confirmed missing	One or more people confirmed missing >24hrs
Terrorism, Kidnap, Extortion, Sabotage	Threats to individuals or structures from known individual or organization	Confirmed threats without actions	Escalated threats or actions involving harm and/or significant damage
Environmental	Low level incident, site contained, requiring regulatory reporting	Incident resulting in offsite contamination and regulatory reporting	Significant incident which has across company implications
Production loss	Reduction of >25% normal capacity for a period of up to one month	Total loss of production or >25% loss for more than one month	Total loss of production for more than one month
Technical difficulty	Inability to operate at design capacity due to known problem	Inability to operate at design capacity due to unknown problems	Continued operating problems >3 months
Major contractor, supplier or partner Issue	No disruption to supply or activities	Supply or services disrupted with threat to production	Joint venture partner in crisis
Financial issue	Site accounting issue with ability to resolve	Cash flow or accounting issues involving multiple sites or no resolution on site	Cash flow or accounting issues requiring public disclosure

EMERGENCY RESPONSE PLAN CCV



H&S

Community NGO action	No immediate likelihood of media interest	Community threat or use of media for publicity	Likelihood of national media attention
Media coverage	No company response warranted	Response required to local or state media article	Response required to nationwide media attention
Regulatory authority action	Action relating to site incident or issue	Action which has implications across multiple sites	Action with companywide implications
Government action	No loss of control	Newmont controlling with higher than normal government interest	Threat of government interference with operations
Civil Unrest	Local disruption with no imminent threat to site	Local disruption with possibility of affecting operations	Civil unrest or hostile threat from change in government
Labor Unrest	Local disruption affecting operations/production	Disruption which has implications across multiple sites	Disruption with companywide implications
Loss of Senior Personnel	Accident/illness adversely affecting normal operational management capabilities	Accident/illness affecting normal regional management capabilities	Accident/illness affecting Newmont corporate management capabilities
Other Criminal Acts	Illegal act which threatens to cause local disruption	Illegal act which threatens to cause national/international disruption	Illegal act which threatens Newmont's corporate governance reputation
Business /publicity opportunity	Low level discussions without commitments	Formal discussion or prepared statement required	Opportunity has companywide implications

* **Note:** Non-operational issues may result in a medium or high severity ranking and may not involve SRT or RRT. Cyanide emergencies are always considered high.

5.9 Evacuation Procedures

5.9.1 The following are basic responsibilities of every employee regarding emergency evacuation:

- Know the location of all emergency exits and evacuation assembly points.
- On the sounding of the alarm in your area or notification by your supervisor, immediately evacuate the building or area.
- On leaving your workstation, take personal items and, in cold weather, your coat. **CLOSE ALL DOORS AND WINDOWS BUT DO NOT LOCK!** Closed doors and windows reduce the spread of smoke and flame, thereby confining the emergency and effectively increasing the time for a safe evacuation. Use good judgment and, if possible, shut vaults and secure sensitive data by locking desks and file cabinets. Leave doors open if the emergency is a bomb threat.
- *If your office door automatically locks, TAKE YOUR KEY WITH YOU; *If the exits are blocked, find the nearest window to escape from if possible. *If all else fails, return to your room, call for help, and wait for rescue.
- WALK DO NOT RUN. In an emergency move quickly but do not run. Keep your self-control.
- Avoid smoke-filled hallways. If the smoke-filled hallway is the only route to a clear exit, then crawl on your hands and knees, or return to your office and escape through the window.
- Do not talk even in low whispers unless it is absolutely necessary. Several people speaking softly make it impossible to communicate emergency instructions.
- If you are disabled, bring this to the attention of your supervisor. Example, pregnancy, heart condition, lung condition, joint problems, etc. Alternate plans can then be made for getting you out of the building. If you can use the stairs, do so, descending at a rate consistent with your own ability.

Department	THIS DOCUMENT IS UNCONTROLLED IN HARD COPY FORMAT		Doc Id: NA-CCV-H&S-PLAN-1775
H&S	Date of This Issue: April 12, 2023	Date of Next Review April 12, 2026	Page 12 of 46

After leaving the building, proceed directly to your assigned assembly area, watching out for traffic hazards. Be certain that contact is made with your supervisor as soon as possible after reaching the assembly area. It is important to determine if anyone was left behind. Remain in the area until other instructions are given.

5.9.2 Evacuation Assemble Points: (These can all change depending on wind direction)

Building	Assembly Point
Administration building	Field to the East of building
ADR 1, Lab	To be determined by supervisor at time of incident. "Wind Direction"
PSES	To be determined by supervisor at time of incident. "Wind Direction"
Ironclad Security	North employee parking area
Big Truck Shop, Warehouse	Ready line to the west of building
Fuel Island	To be determined by supervisor at time of incident. "Wind Direction"
High Grade Mill	To be determined by supervisor at time of incident. "Wind Direction"
ADR II	East employee parking area
Schoolhouse	South ready line or Ironclad parking area
Wagner Rebuild	North parking area
Crusher	North parking area
Victor Hotel	Northwest angle parking area

5.9.3 Pit Evacuation:

- The notification of a pit evacuation will come from Mine Foreman/Managers.
- It is important that people be waiting to be evacuated remain in an area where they are assigned and out of the line of traffic.
- The pit supervisors will determine pick-up assignments and monitor progress.

5.9.4 Accounting for Personnel:

- It is the responsibility of supervisors to account for their personnel in the event of an emergency.

Department	THIS DOCUMENT IS UNCONTROLLED IN HARD COPY FORMAT		Doc Id: NA-CCV-H&S-PLAN-1775
H&S	Date of This Issue: April 12, 2023	Date of Next Review April 12, 2026	Page 13 of 46

(b) The supervisors accomplish this responsibility through the performance of two vital duties:

- Clearing of their work area of personnel during an evacuation.
- Conducting a head count of their employees and any other persons (e.g., contractors, vendors, visitors, etc.) located in their work area at the time of the evacuation at the designated assembly area.

5.9.5 Once the head count has been completed, the supervisor should report to their immediate supervisor and convey any discrepancies in personnel, including any missing personnel and/or any individuals that normally work elsewhere.

5.9.6 In turn, each supervisor will report to their immediate supervisor until personnel information reaches the senior management person for each department at the assembly area. The senior management person for each department will account for all departmental personnel. This accounting should include all employees, contractors, delivery personnel, temporaries, and visitors under their supervision.

5.9.7 Departmental management at each assembly area should communicate with each other to determine the location of any missing personnel. If personnel are suspected to be inside an evacuated facility, the Incident Commander and Emergency Response Team Captain should be contacted immediately. All supervisors shall keep their groups together at their respective assembly areas until the Incident Commander gives further instructions.

5.9.8 Search and Rescue:

- (a) If a building has been evacuated, **personnel will not re-enter the building** to perform search and rescue or to perform additional shutdown procedures until the all clear signal is given, or unless you are directed to do so by the Incident Commander.
- (b) Members of the Emergency Response team are allowed to re-enter an area that has been evacuated to perform search and rescue before the all-clear signal is given.
- (c) Search and rescue are the responsibilities of the Emergency Response Team and will be conducted in accordance with their standard operating guidelines, however the teams may request help from the area supervisor or their designee for the search and rescue because of their knowledge of the area.

5.9.9 Note: There will be no search and rescue undertaken unless adequate backup teams are ready and standing by.

5.9.10 Termination of Emergency:

- (a) The area evacuated must first be determined safe.
- (b) Members of the response teams will thoroughly investigate the evacuated facility.
- (c) If there was a fire or structural damage is suspected, the area must be inspected by Emergency Response Coordinator and Maintenance personnel to determine if the area is safe to occupy.
- (d) Once the area is determined to be safe, the response team captain will notify the Incident Commander to send out the all-clear signal.
- (e) The Incident Commander will broadcast the all-clear signal on all channels.
- (f) The broadcast will include a description of the areas that were evacuated by the phrase, **"is now all-clear."**
- (g) The broadcast will be repeated three times in succession.
- (h) Once the area supervisor or Emergency Response Team has given the all-clear signal, employees may return to their work areas.

Department	THIS DOCUMENT IS UNCONTROLLED IN HARD COPY FORMAT		Doc Id: NA-CCV-H&S-PLAN-1775
H&S	Date of This Issue: April 12, 2023	Date of Next Review April 12, 2026	Page 14 of 46

5.10 Stress Management:

5.10.1 People may find responding to emergencies stressful. Often emergency personnel work for long hours without adequate rest. In the event of a high level emergency, it will be necessary for a Site Response Team to arrange a debriefing. The debriefing will allow for open discussion of the feelings, frustrations and anxieties experienced by response personnel. Contact the site Emergency Response Coordinator to organize a debriefing.

5.11 Bomb Threat

5.11.1 In the event that any person should receive a threat of a bomb, the following procedures shall be followed.

5.11.2 Bomb Threat Procedures:

- (a) Notify any persons of authority, i.e., Manager, Supervisor, Health & Safety, Security or who, in turn, will withdraw all persons from the threatened area immediately.
- (b) After all persons have been moved to a safe location, local law enforcement shall be notified by the most senior management personnel involved and their instructions shall be followed explicitly.
- (c) The General Manager shall be notified and the Rapid Response initiated.

5.11.3 Action Plan – Receipt of Bomb Threat:

- (a) Make every effort to remain calm and relaxed.
- (b) Keep the caller on the line as long as possible. Ask the caller to repeat the message. Record every word spoken by the person making the call, if possible.
- (c) Try to have the caller give the location or area of the bomb and the possible time of detonation. If the caller does not indicate the location of the bomb or possible time of detonation, it may be advisable to inform the caller that the building or mining area is occupied and that detonation of the bomb could result in death or serious injury to many innocent people.
- (d) Pay particular attention to any strange or peculiar background noises such as motors running, background music, type of music which might give even a remote clue to the place from which the call is being made.
- (e) Listen closely to the voice (male, female, etc.), voice quality, accents and speech impediments.
- (f) Ask again for the specific location of the bomb.
- (g) Ask again for the specific time of detonation of the bomb.
- (h) Ask the following questions:
 - (1) Where is the location of the bomb?
 - (2) What kind of bomb is it?
 - (3) Can you describe the bomb to me? What does it look like?
 - (4) What time is detonation?
 - (5) Why was the bomb planted?
 - (6) How do you know about the bomb?
- (i) Try to determine the following things about the caller:
 - (1) Name
 - (2) Age
 - (3) Sex (Male or Female)
 - (4) Mental Condition (influence of drugs/alcohol, etc.)
 - (5) General Condition

Department	THIS DOCUMENT IS UNCONTROLLED IN HARD COPY FORMAT		Doc Id: NA-CCV-H&S-PLAN-1775
H&S	Date of This Issue: April 12, 2023	Date of Next Review April 12, 2026	Page 15 of 46

- (6) Nationality
- (7) Voice Peculiarities
- (8) Accent, speech mannerisms, speech defects

Complain somewhat that you cannot hear well. Ask the person to repeat what they said or is saying several times, if possible.

5.11.4 Items to consider on a bomb threat call:

- (a) If the caller makes two (2) or more calls in succession, carefully compare each of the calls.
- (b) If the language or words used are entirely different, the threat may be an "off-the-top-of-the-head" type. However, action must still be taken.

5.11.5 Procedure for handling bomb threats:

- (a) Shut down all mobile and base station radio transmissions in the area (300 feet of the affected area, if known).
- (b) Remove all persons from the affected area or building. Personal items such as purses, briefcases and lunch boxes should be left inside the building.
- (c) Have emergency rescue crews on standby at the mine, in a safe location.
- (d) Do not, under any circumstances, touch, disturb or attempt to disarm the device

5.12 Labor/Civil Disturbances and Distraught Persons

5.12.1 Emergency Level Low

- (a) A distraught person is causing a non-violent disturbance, no threats against persons or property; the person is a Newmont/contract employee or community member.
- (b) Individuals are beginning to congregate or credible reports indicate that a demonstration may take place.
- (c) No disruption of operations other than nuisance level.
- (d) Minor criminal acts such as ingress/trespassing, verbal assaults, threats etc. exist.
- (e) No National or International implications.
- (f) No publicity involved or likely to occur.
- (g) Can be handled at the local level

5.12.2 Emergency Level Medium

- (a) A distraught person causing trouble cannot be persuaded to leave an area, threats against property or persons have been made.
- (b) Serious criminal acts have taken place e.g. actual violence against persons, damage to property, disruption to processes beyond a nuisance levels are taking place or are imminent, etc.
- (c) Refusals to leave Newmont property after reasonable negotiations have taken place.
- (d) Medium sized demonstration e.g. approximately 50 to 100 persons.
- (e) Publicity involved or likely will be.
- (f) Implications at National level.
- (g) Potential for violence likely.
- (h) Cannot be handled at local (may require authority's intervention).

5.12.3 Emergency Level High

- (a) Distraught person/s becomes violent with associated life threatening or significant harm to property and processes actions taking place.

Department	THIS DOCUMENT IS UNCONTROLLED IN HARD COPY FORMAT		Doc Id: NA-CCV-H&S-PLAN-1775
H&S	Date of This Issue: April 12, 2023	Date of Next Review April 12, 2026	Page 16 of 46

- (b) Large-scale e.g. more than approximately 100 person's violent demonstration putting the security of Newmont personnel and property at risk.
- (c) Requires or will likely require security assistance by outside authorities.
- (d) Sustained disruption of operations.
- (e) Significant publicity already or likely.
- (f) National and International implications

5.12.4 General Action Guidelines

5.12.4.1 Supervisor on the Scene:

- (a) Observe and assess the situation and get employees away from any immediate danger.
- (b) Take whatever steps can safely be taken to reduce or eliminate the risks to people, property and process without putting anyone in danger.
- (c) If there is a confrontation, try to calm the situation or disengage from the confrontation.
- (d) Contact Security, explain the situation and request their immediate response

5.12.4.2 External Affairs:

- (a) If the event is off-site contact the Site Manager to confirm actions desired, e.g. respond or not to respond.
- (b) Acts as Incident Commander (IC) for low level events involving community personnel.
- (c) Guides those involved to a location and time where the issues can be dealt with calmly and logically.
- (d) Keeps Security and other Emergency Response Teams apprised of possible emergency needs and developments.
- (e) Illegal activity must cease before Newmont will discuss issues, if there is a refusal, the emergency moves to a moderate level and a senior Security person takes over as IC from External Affairs, with External Affairs as an on-scene advisor to Security.
- (f) Participates in making the assessment regarding a change in alert level

5.12.4.3 Security

- (a) Immediately notifies External Affairs to respond immediately to the scene if the event involves community personnel.
- (b) If not already done, remove people, equipment, and protect process for those at risk due to the disturbance.
- (c) Keep the Site Response Team Leader (SRT Leader) and other persons apprised of the situation and events and provide them with enough facts to enable them to determine the alert level and respond appropriately.
- (d) Deploy personnel to seal off access to the mine site.
- (e) Decide if additional on-site emergency services are required and coordinate.
- (f) Liaison with Community / External Relations representative immediately if not already done. If emergency involves community personnel, External Relations takes the role of IC for low level emergencies; Security takes control at moderate and high level emergencies. If the emergency involves strictly site personnel, Human Resources will be contacted and act as IC for low-level emergencies.
- (g) Secure scene while discussions takes place.
- (h) Use force only when absolutely necessary and to an extent proportional to the threat. Do not violate the rights of individuals while exercising the right to exercise freedom of association and peaceful assembly.
- (i) If the event moves from low to medium level, the IC duties transfers to senior Security personnel.

Department	THIS DOCUMENT IS UNCONTROLLED IN HARD COPY FORMAT		Doc Id: NA-CCV-H&S-PLAN-1775
H&S	Date of This Issue: April 12, 2023	Date of Next Review April 12, 2026	Page 17 of 46

- (j) During medium and high-level emergencies, the IC warns those involved to leave property or authorities will be called (The SRT Leader will be kept informed of events on an ongoing basis and approves action requesting external authorities to respond to the scene).
- (k) When authorities arrive, they assume IC responsibility with Security acting in support.

5.12.4.4 Mine Rescue Team:

- (a) If on scene prior to Security, ensure that they have been notified. Tell them whether the distraught person is armed, how many people are involved in the situation, and if anyone is injured.
- (b) If on scene prior to Security, advise and direct them to the location.
- (c) Isolate the site and evacuate as many people as possible.
- (d) Wait for help to arrive.
- (e) Position to a staging area where the MRT will be safe, while being able to respond promptly.

5.12.4.5 Pre-Event Information:

- (a) Persons receiving information regarding a potential civil disturbance shall pass this information directly and immediately (same working shift or sooner), to the manager of the area potentially affected by the disturbance and to Security Manager or his designate.
- (b) The Security Manager, upon receiving this information shall prepare contingency plans in direct consultation with the Area manager potentially affected as well as with External Affairs personnel.
- (c) The Security Manager will brief his immediate supervisor as well as the site Manager of any potential medium or high-level emergency situations.

5.13 Fires

5.13.1 Any type of fire on the mine site (within the fenced boundary) shall be immediately reported to the Mine Rescue Coordinator.

Any fire lasting more than 30 minutes from discovery must be immediately reported to the H&S Manager.

- (a) In the event of fire outside the mine property that places the mine downwind in the smoke plume, employees must be evacuated.
- (b) The H&S Manager must be immediately notified if this occurs.

5.13.2 Mine Structure/Surface Fires: When you discover a structure fire, follow these procedures.

5.13.2.1 Controllable Fires:

- (a) *Call for help and attempt to put it out.* Use the fire extinguisher located in your area. The red, multi-purpose ABC extinguishers can be used for electrical fires, wastepaper can fire, and/or oily substances.
- (b) If the fire burned through a wall, ceiling, or caused apparent damage to the building or structural steel, the Emergency Response Team must be called to ensure the fire is completely out and provide a fire watch.
- (c) Remember: Do not put yourself at risk; Never enter a smoke filled environment.

5.13.2.2 Large Uncontrollable Fires:

If you cannot put it out quickly, activate the fire alarm nearest you, evacuate and call a Mayday.

- (a) Isolate the fire by closing doors, if possible.

Department	THIS DOCUMENT IS UNCONTROLLED IN HARD COPY FORMAT		Doc Id: NA-CCV-H&S-PLAN-1775
H&S	Date of This Issue: April 12, 2023	Date of Next Review April 12, 2026	Page 18 of 46

- (b) Pull the fire alarm lever in alarm box if available in your area.
- (c) Shut off gas and power supply, if possible.
- (d) Notify the immediate supervisor. The supervisor will notify Security and H&S.
- (e) Evacuate the area.

5.13.3 Emergency Response Team: All of the hydrants are equipped with water cannons. If the structure on fire is beyond saving, your efforts should be concentrated on saving surrounding structures.

5.13.4 The Ironclad Security is responsible for:

- (a) Activate the Mayday.
- (b) Calling for the response of all emergency personnel needed
- (c) Report wild land fires to the Teller County Dispatch, 719-687-9652.
- (d) Providing unobstructed access to and from the scene for emergency personnel and equipment.
- (e) Provide additional support to the Mine Rescue Team.
- (f) Coordinate governmental mutual aid requests with Team Captain.
- (g) Notifying Security, H&S and Management.

5.13.5 Inform Ironclad Security

- (a) Your name and location.
- (b) Location of the fire.
- (c) State what is burning.
- (d) Give the size of the fire, direction, and spread if known.
- (e) Determine if toxic chemicals may be involved.
- (f) Report on efforts taken to control the fire.
- (g) Number of injured personnel.
- (h) Type of injuries.
- (i) Type of help needed.
- (j) Do not hang up until you are told to do so

5.13.6 All fires that last more than 30 minutes must be reported to the Health & Safety manager or the on call safety representative. All fires shall be investigated and incident reports completed.

All responding MRT members shall have all appropriate firefighting PPE in place

5.13.6 Mobile Equipment Fires:

5.13.6.1 Manually activated fire suppression systems are installed on all large pieces of mobile equipment.

- (a) Operators shall attempt to extinguish any fire immediately without exposing themselves to risk or injury.
- (b) Equipment should be turned off, with keys removed, brake(s) set and wheels turned or equipment angled toward berm or highwall.
- (c) If immediate evacuation of mobile equipment is necessary, quickly set brakes, turn wheels or angle equipment toward berm or highwall, shut down engine, and ensure fire suppression is activated during dismount if at all possible.
- (d) Follow Emergency Evacuation Plan posted in all HME
- (e) Initiate Mayday procedures, Notify your area supervisor by phone or radio.
- (f) The area supervisor shall notify Ironclad Security.
- (g) Upon notification of a fire, the water truck operator shall immediately travel to the fire area.

Department	THIS DOCUMENT IS UNCONTROLLED IN HARD COPY FORMAT		Doc Id: NA-CCV-H&S-PLAN-1775
H&S	Date of This Issue: April 12, 2023	Date of Next Review April 12, 2026	Page 19 of 46

- (h) On-site MRT members shall retrieve ARFF firetruck from Mill and proceed to scene of the fire.
- (i) MRT members shall refer to the equipment specific Fire Attack Plans (located in cab of ARFF) for guidance on vehicle placement and fire attack angles and fire source access points.
 - a. As stated in Fire Attack Plans, **NO** MRT members shall board a piece of HME involved in fire unless the fire is out, appropriate firefighting PPE (full bunker gear and SCBA) is in use and accompanied and led by trained and certified firefighting personnel.
 - b. All personnel not involved in the firefighting efforts shall be evacuated to a minimum distance of 300 feet.
 - c. Due to large quantities of fuel carried by HME, minimum evacuation distance of 1000 feet shall be utilized if there is any chance that onboard fuel tanks are involved in fire.
- (j) The area supervisor shall be responsible for summoning the help needed to extinguish the fire.
- (k) All personnel not assigned to specific jobs must keep clear of the area.
- (l) Equipment on which there has been a fire or a suspected fire shall not be operated until an investigation has been conducted by both the supervisor and the Maintenance department.
- (m) All fires and suspected fires must be reported to the area supervisor.
- (n) It is the supervisor's responsibility to investigate the fire and report to the H&S department and the Maintenance department on all equipment fires.

5.13.7 Chemical Fires: Before using water, identify the chemical using the Emergency Response Guide.

*** Note: Some chemicals react with water.**

5.13.8 Wildland Fires: This section covers range fires on mine property.

- (a) Wildland fires are by their nature dangerous and unpredictable events that should be treated with great respect.
- (b) Other than the obvious, threats arise from heat effects, smoke inhalation, and oxygen deprivation. Any wildland fire on mine property should be immediately reported to the area Supervisor.
- (c) The area supervisor shall be responsible for summoning the help needed to extinguish the fire if necessary.
- (d) On-site MRT personnel shall retrieve the ARFF firetruck and respond to closest on-site area to scene of fire and coordinate fire mitigation efforts through Incident Command.
- (e) All responses to the fire will be coordinated by the area Supervisor and the Production General Foreman.
- (f) The security manager or his designee shall notify all landowners in the vicinity who might be affected by the fire.
- (g) The General Manager shall be notified of any major fire, or a fire that threatens life or mine property.

5.13.9 The objective in responding to a wildland fire is to:

- (a) Report it to Teller County Dispatch, 719-687-9652 or call 911
- (b) Evaluate the danger to personnel and infrastructure.
- (c) Continual monitoring of the fire for direction, speed, size, smoke, etc.
- (d) Allocation of resources as needed.
- (e) Evacuate to a safe place accounting for all persons on site.
- (f) Help with fire in area as situation warrants and as directed by site management.

Department	THIS DOCUMENT IS UNCONTROLLED IN HARD COPY FORMAT		Doc Id: NA-CCV-H&S-PLAN-1775
H&S	Date of This Issue: April 12, 2023	Date of Next Review April 12, 2026	Page 20 of 46

5.13.10 LPG Tank Fire Procedure:

Boiling Liquid Expanding Vapor Explosion (BLEVE)

Rupture and subsequent fire at the Liquefied Petroleum Gas (LPG) Tank.

- (a) The first priority is to be directed towards saving lives, regardless of whether company property is at risk. Emergency Evacuation is warranted.
- (b) The main aim in responding to an incident is to extract injured personnel, cool the tanks on fire to slow their disintegration, and evacuate all personnel a safe distance in a location not in line with the end caps on the tank.
- (c) At the discretion of management, tasking may be directed towards extinguishing the fire and restoring the accident site to its normal working condition, only after all risks to personnel have been negated.
- (d) On-site MRT personnel shall retrieve the ARFF firetruck from the Mill and respond to scene of fire at Incident Command discretion.
 - a. If a BLEVE is believed to be a possibility all staff including responding MRT personnel and equipment shall evacuate to a safe distance (refer to explosives fire protocols).

5.13.11 Explosives Fire:

- (a) Report the emergency as described.
- (b) Secure the scene to keep all people out of the area at minimum distance of 1/2 mile in all directions of explosives fire.
 - a. **Refer to exclusion zone maps in *Appendix B* of this plan.**
- (c) Full staff accountability will take place with area supervisors reporting to Dispatch
- (d) MRT personnel will respond to primary staging area with Rescue Truck, ARFF, portable water tank.
- (e) MRT drone pilot will deploy to primary Landing Zone and launch drone.
- (f) Drone will provide detailed, closeup view of fire inside evacuation zone.
- (g) Drone pilot will report drone status and fire details to Incident Command.

***Note:** If a vehicle or structure containing explosives catches on fire, (i.e. engine compartment) attempt to extinguish the fire before it becomes a risk to the explosives.

Do not, under any circumstances, fight an explosives fire; allow it to burn out.

5.13.12 Electrical Fires in a Motor Control Center (MCC)

- (a) **Report fire through Mayday Procedure**
- (b) **Ironclad Security will notify Teller County Dispatch, 719-687-9652 or 911**
- (c) **Responding MRT personnel will arrive on scene with ARFF, bunker gear sets, SCBA's, Rescue Truck, and portable water tank.**
- (d) **Dispatch will deploy water trucks (626, 627, or 730) to scene to serve as water tender.**
- (e) **Ironclad will contact onsite E&I personnel to determine if electrical power supply to MCC can be shut down onsite.**
- (f) **If power supply cannot be shut down by onsite staff, Ironclad will contact Black Hills Energy service provider to dispatch personnel to mine site to shut down power supply to MCC.**
- (g) **Firefighting procedures will not take place until power supply to the affected MCC is shut down.**
- (h) **Once power supply to MCC is shut down, ARFF will deliver firefighting agent to MCC interior via punch plate locations if possible.**

Department	THIS DOCUMENT IS UNCONTROLLED IN HARD COPY FORMAT		Doc Id: NA-CCV-H&S-PLAN-1775
H&S	Date of This Issue: April 12, 2023	Date of Next Review April 12, 2026	Page 21 of 46

- (i) **MRT personnel will not enter an MCC that has been affected by fire unless they are:**
 - a. **Assisting certified professional firefighting agency or department and,**
 - b. **Wearing full bunker gear, all necessary firefighting PPE, and SCBA.**

5.13.13 Tire Fires:

- (a) **Tire fires on HME are extremely dangerous!!!** Great care must be taken to ensure that no vehicles of any kind are ever directly inline with the wheel rim of the tire that is on fire.
- (b) If a tire on any piece of HME is on fire all personnel shall immediately evacuate to a distance of at least 1000 feet.
- (c) Under no circumstances shall any personnel fight a tire fire on HME.

5.13.14 Battery Electric Vehicle (BEV) Fires:

- (a) **Procedure TBD**

5.13.15 Fire Reporting Requirements:

- (a) All fires must be reported to the H&S Manager.
- (b) The H&S Manager will report to the USFS and MSHA as appropriate.
- (c) The insurance company will be notified.
- (d) Proper documentation must be kept (i.e., pictures, date, time, circumstances, etc.). Documentation is the responsibility of the area Supervisor and H&S.

Phone Contacts

H&S Manager	719-689-4094	Cell 509 481 5330
Mine Rescue Team Coordinator	719-851-4628	Cell 719-252 2544
H&S on Call	719-689-4328	
S&ER On-Call	719-689-4300	

5.14 Emergency Response Procedures, Leaks, Spills, or Releases:**5.14.1 Any leak, or release outside containment areas and any unplanned spill into containment.**

- (a) Must be reported to the Environmental department immediately.
- (b) All external notification and reporting shall be conducted by the Environmental department.
- (c) An event report must be completed in Enableon for every spill and release. To designate the difference between a spill and a release, a spill must be documented as a "Near-Miss" event.

5.14.2 Uncontrollable spills or releases must be reported to S&ER:

- (a) Containment and cleanup activities shall only be performed as described in the Spill Prevention, Control and Countermeasures Plan (SPCC) or as directed by Environmental personnel.
 - i. S&ER On-Call 719-689-4300
 - ii. H&S On-Call 719-689-4328
- (b) When handling chemicals, refer to the Safety Data Sheets (SDS) for handling and disposing of that particular material. Coordinate with S&ER to ensure proper disposal methods.

Department	THIS DOCUMENT IS UNCONTROLLED IN HARD COPY FORMAT		Doc Id: NA-CCV-H&S-PLAN-1775
H&S	Date of This Issue: April 12, 2023	Date of Next Review April 12, 2026	Page 22 of 46

EMERGENCY RESPONSE PLAN CCV



H&S

5.14.3 Any injuries requiring medical attention refer to the medical emergencies section. In all cases, the general response procedure shall follow:

1. SAFETY AND DETECTION	<ul style="list-style-type: none"> ➤ Assess safety situation to yourself and others. ➤ If you cannot identify the substance, evacuate immediately and follow step 11. ➤ If there is a risk of fire or explosion, evacuate immediately and follow step 11. ➤ Shut off ignition source(s) if safe to do so.
2. TRACE SOURCE	<ul style="list-style-type: none"> ➤ Put on appropriate PPE. ➤ Trace the source of the spill. ➤ Determine if spill is continuing.
3. STOP or CONTROL	<ul style="list-style-type: none"> ➤ Stop or control the leakage by shutting valves, plugging holes, moving mobile equipment – only if it is safe to do so.
4. SECURE AREA	<ul style="list-style-type: none"> ➤ Divert traffic and people away from the immediate area. Evacuate if necessary.
5. CONTAIN	<ul style="list-style-type: none"> ➤ Contain the leakage using temporary berms, booms etc.
6. RECOVER PRODUCT	<ul style="list-style-type: none"> ➤ Recover any free liquid into purpose built containers if possible. ➤ Recover absorbent booms etc.
7. CLEAN UP	<ul style="list-style-type: none"> ➤ Clean-up the spill by pumping, absorbing, chemically treating. ➤ DO NOT SPREAD OR DILUTE SPILLS WITH DEGREASERS, DETERGENTS OR WATER.
8. DISPOSE	<ul style="list-style-type: none"> ➤ Dispose of the spilled product as directed by the S&ER Department. ➤ Contaminated soil should be removed to an appropriate area (e.g. Hydrocarbon contaminated soil can be remediated).
9. CONFIRM CLEAN UP	<ul style="list-style-type: none"> ➤ Clean-up all obvious contamination as directed by the S&ER Department; if contaminated area is indistinct (due to moisture, rain), collect samples for analysis. ➤ All cyanide contaminated soil $\geq .2$ PPM WAD must be excavated or treated in place. ➤ Monitor the spill site to validate clean up and impact on the environment.
10. REPORTING	<ul style="list-style-type: none"> ➤ Enter all information into Cintellate as soon as possible including pictures and any lab analyses performed. ➤ Any external reporting shall be conducted by HS Department.
11. REPLACE USED EQUIPMENT	<ul style="list-style-type: none"> ➤ Any equipment or materials consumed in the cleanup operation should be replaced as soon as possible. ➤ Items to restock Spill Kits can be obtained from Warehouse.
12. EMERGENCY NOTIFICATION	<ul style="list-style-type: none"> ➤ Contact your supervisor. ➤ Contact Ironclad Security and the appropriate Environmental personnel. ➤ Contact S&ER personnel per the call out sheet.

5.14.4 The use and location information and specific procedures for responding to chemical leaks and/or spills for major mine chemicals are outlined below.

Department	THIS DOCUMENT IS UNCONTROLLED IN HARD COPY FORMAT		Doc Id: NA-CCV-H&S-PLAN-1775
H&S	Date of This Issue: April 12, 2023	Date of Next Review April 12, 2026	Page 23 of 46

Sodium Cyanide (Liquid): CYANCO EMERGENCY RESPONSE SERVICE**(775) 623-1214****5.14.5 Use and Location:**

- (a) Cyanide is delivered to the Cripple Creek & Victor mine site by the transport company Transwood for Cyanco via tankers.
- (b) Delivered as a Concentrated Sodium Cyanide - 30% reagent grade solution.
- (c) The product is located at the bulk reagent area.

5.14.6 Danger:

- (a) Sodium Cyanide is highly toxic and safe work practices must be adhered to, to prevent exposure.
- (b) Death may occur due to asphyxiation.
- (c) Sodium Cyanide is non-flammable but may produce highly flammable and toxic hydrogen cyanide (HCN) gas upon contact with acids.

5.14.7 Sodium Cyanide is an acute poison and acts rapidly as it enters the body either by:

- (a) Inhalation of HCN gas or cyanide dust.
- (b) Ingestion of solid or solution.
- (c) Absorption through skin or eyes.
- (d) The TLV for HCN is 4.7ppm and is highly toxic.

5.14.8 Response Procedure:

- (a) Refer to Guide 157 of the Department of Transportation (DOT) Emergency Response Guidebook for emergency response information.
- (b) Keep upwind of release or spill. Evacuate the area immediately in all directions at least 150 feet. Refer to the Table of Initial Isolation and Protective Action Distances in the DOT Emergency Response Guidebook for further evacuation information.
- (c) Equipped with the appropriate monitor for HCN gas detection.
- (d) Detectors are located in the Control Rooms at ADR I, ADR II, PSES, High Grade Mill, Crusher Millwright Shop, and Mine Rescue Room at HG Mill.
- (e) SCBA and full protective clothing/gear shall be worn.
- (f) If the leak/spill has breached a concrete containment, use surrounding soil to berm the spill.
- (g) Remove all contaminated soil to the heap leach area or as directed by S&ER.
- (h) Refer to fluid management plan.

5.14.9 Sodium Cyanide – (Diluted Process Solution):

- (a) This procedure is for diluted, weak cyanide solutions.
- (b) The solutions may be high pH and may cause injury to exposed skin.

5.14.10 Use and Location:

- (a) Dilute cyanide solution is used at all process facilities to extract precious metal from ore.
- (b) The primary leachate, pregnant solutions, and tailings of the process solutions all contain weak acid dissociable (WAD) cyanide in concentration ranging from less than 1 mg/L to greater than 120 mg/L.

5.14.11 Response Procedure:

- (a) Equipped with the appropriate monitor for HCN gas detection.
- (b) Detectors are located in the Control rooms at ADR I, ADR II, PSES, High Grade Mill, Crusher Millwright Shop, and the Mine Rescue Room at HG Mill.
- (c) Control flow by shutting down pumps/valves.

Department	THIS DOCUMENT IS UNCONTROLLED IN HARD COPY FORMAT		Doc Id: NA-CCV-H&S-PLAN-1775
H&S	Date of This Issue: April 12, 2023	Date of Next Review April 12, 2026	Page 24 of 46

- (d) If solution has breached concrete containment, control area of spill by constructing soil berms for spill containment.
- (e) Remove all wet soil to the heap leach area.
- (f) For large areas of contamination, soil samples will be taken and analyzed for WAD cyanide levels to verify contamination area limits.
- (g) After cleanup is complete, take further soil samples and analyze them to verify that total cleanup was successful.

5.14.12 Tractor/Trailer Spills:

- (a) A large percentage of the cyanide used in Newmont CCV operations is supplied by Cyanco. Drivers for Transwood, the Cyanco contracted transporter, are trained in the operation and use of the Qualcomm Satellite Communication System for emergency response.
- (b) If the tanker has not sustained damage and the driver is not injured, the driver will initiate an emergency response utilizing the Qualcomm System. Emergency containment and clean-up is initiated by and handled by Cyanco.
- (c) In the event of a serious incident on the mine property whereby the prime mover radio is not available, and cyanide has been spilled, the supervisor is to call Cyanco with details of the incident. Call 911.
- (d) If cyanide solution is released from the tanker, the MRT is to be organized immediately with the appropriate safety equipment to contain the release before it leaves the property or enters a waterway.
- (e) The action to be taken after containment of the release will be determined in conjunction with Cyanco.

5.14.13 Overtopping of Leaching Impoundment/Power Outages.

- (a) During a severe emergency (power outages, pump failures, etc.), if the operator determines there is a possibility that any of the leaching impoundment could overtop, management personnel will be notified and heavy equipment and personnel will be mobilized to construct an emergency berm adjacent to the area to contain the release.
- (b) Process solutions contained in a temporary emergency containment basin will be pumped back to the process following the emergency.
- (c) Cyanide-contaminated soils will be removed and disposed of on the heap leach pad or tailings impoundment. If necessary, soils would also be neutralized.

5.14.14 Run-off from Heap Leach Pads:

- (a) In the event that runoff is observed from the leach pads, management personnel will be notified and heavy equipment and personnel will be mobilized to construct an emergency berm area adjacent to the area to contain the release.
- (b) Process solutions contained in a temporary emergency containment basin will be pumped back to the process following the emergency.
- (c) Cyanide-contaminated soils will be removed and disposed of on the heap leach pad or tailings impoundment. If necessary, soils would also be neutralized.

5.14.15 Tanks, Pipelines and Transfer Off Loading:

- (a) In the event of a release of cyanide solution beyond an engineered containment structure, the Process Manager or control room will be notified and will take immediate measures to stop the release.
- (b) If necessary, emergency berms or dikes will be constructed to contain the release until necessary equipment and personnel can be mobilized to clean up.

Department	THIS DOCUMENT IS UNCONTROLLED IN HARD COPY FORMAT		Doc Id: NA-CCV-H&S-PLAN-1775
H&S	Date of This Issue: April 12, 2023	Date of Next Review April 12, 2026	Page 25 of 46

- (c) Personnel and community safety are always the first priority. In case of a leak or release during off loading, the transfer driver will shut system down and notify operator of area to call appropriate personnel and equipment.
- (d) In case of an uncontained seepage, notification to foreman, general foreman or manager will be made. Employees using a gas monitor and appropriate PPE will control seepage. If employees are unable to contain the seepage, rescue personnel will be brought in for control.

5.14.16 Fire/Explosions:

- (a) Do not use straight streams.
- (b) Use water spray, fog or alcohol resistant foam to extinguish fire and to reduce vapors.
- (c) Control/contain fire water runoff for later disposal.

5.14.17 Treatment of Victims of Cyanide Exposure:

Symptoms of early or mild cyanide poisoning include:

- (a) Headache
- (b) Giddiness
- (c) Nausea
- (d) Difficulty in breathing – suffocating feeling.
- (e) Feeling of general weakness with heaviness in arms and legs.
- (f) Irritations of nose, mouth and throat.

5.14.18 Symptoms of severe cyanide poisoning include:

- (a) Cherry red complexion, flushed
- (b) Gasping for breath
- (c) Loss of consciousness
- (d) Breathing may be weak or absent and may result in cardiac arrest and possible death.

5.14.19 Routes of Exposure:

- (a) Eye Contact: Cyanide is carried in a solution of water and caustic to maintain a high pH. Immediately flush with large amounts of water for at least 20 minutes, eyelids should be held open.
- (b) Skin Contact: Remove contaminated clothing and wash skin thoroughly with large amounts of water.
- (c) Ingestion: Do not give anything by mouth.
- (d) Protection of Rescuers: Care should be taken in handling a patient whose clothing is contaminated with cyanide.

***Note:** It is important that the rescuer is not exposed to contamination.

5.14.20 NOTE: Rescuer must avoid becoming a casualty and wear a SCBA over 10 ppm HCN.

5.14.21 Semiconscious or Unconscious Breathing Victim All Routes of Exposure:

- (a) Symptoms of drowsiness and or slurred speech.
- (b) Position patient to keep airway open.
- (c) Give Oxygen high dose 15 liter. Non Rebreather
- (d) Get Cyanide Antidote Kit – administered by MRT

5.14.22 Unconscious Non-breathing Victim All Exposure Routes:

- (a) Use of a one way valve pocket mask when artificial respiration is necessary or bag valve mask with oxygen.
- (b) Perform CPR using CAB (Circulation, Airway & Breathing) protocol, until the victim has adequate breathing or until medical help arrives.

Department	THIS DOCUMENT IS UNCONTROLLED IN HARD COPY FORMAT		Doc Id: NA-CCV-H&S-PLAN-1775
H&S	Date of This Issue: April 12, 2023	Date of Next Review April 12, 2026	Page 26 of 46

5.14.23 Location of First Aid Equipment: Red MRT Bag

- (a) Exploration Building
- (b) HG Mill Control Room
- (c) ADR I Control Room
- (d) ADR II Control Room
- (e) Lab
- (f) Mine Rescue Truck

5.14.24 Eye wash stations are located in all process areas where cyanide is located

5.14.25 Response Procedure:

- (a) Personnel shall wear full protective clothing/gear.
- (b) SCBA's or chemical goggles and face shield should be used to protect the face.
- (c) If the spill has breached a concrete containment, control with soil berms.
- (d) Solution should be returned to the process circuit

5.14.26 Caustic Soda: (50% NaOH): Used as a pH modifier, primarily as initial dilutant of sodium cyanide.

5.14.27 Response Procedure:

- (a) Personnel shall wear full protective clothing/gear.
- (b) SCBA's or chemical goggles and face shield should be used to protect the face.
- (c) If the spill has breached a concrete containment, control with soil berms.
- (d) Dilute spill with water

5.14.28 Hydrogen Peroxide:

Hydrogen Peroxide is used to manufacture the CAROs acid used to detoxify cyanide in tailings and is located at the Warehouse Facility

5.14.29 Response Procedure:

- (a) Personnel shall wear full protective clothing/gear.
- (b) SCBA's or chemical goggles and face shield should be used to protect the face.
- (c) If the spill has breached a concrete containment, control with soil berms.
- (d) Small spill flood with water to dilute and neutralize spill.
- (e) Large spill absorb with dry earth, sand or other non-combustible material.
- (f) Although diluted, neutralized hydrogen peroxide has converted to water, the solution should be returned to the process circuit as a best management practice.

5.14.30 Teller County Emergency Medical Services Protocol**5.14.30.1 Hydroxycobalamin Administration:**

Only authorized Mine Rescue Team Member or Teller County EMS can administer this drug.

5.14.30.2 Indications:

Treatment of known or suspected cyanide toxicity / exposure.

- (a) Common symptoms: headache, confusion, dyspnea, chest tightness, and nausea.

Department	THIS DOCUMENT IS UNCONTROLLED IN HARD COPY FORMAT		Doc Id: NA-CCV-H&S-PLAN-1775
H&S	Date of This Issue: April 12, 2023	Date of Next Review April 12, 2026	Page 27 of 46

- (b) Common signs: AMS, seizures, coma, mydriasis, tachypnea (early), apnea (late),
- (c) Hypertension (early), hypotension (late), cardiovascular collapse, vomiting, and
- (d) Elevated lactate.

5.14.30.3 Precautions:

- (a) Caution in patients with history of anaphylactic reactions to hydroxycobalamin or cyanocobalamin but consider administration if life threatening cyanide toxicity.
- (b) No pediatric doses are known for the United States, but non-US areas have used a dose of 70mg/kg IV for treatment of pediatric patients.

5.14.30.4 Adverse Reactions:

- (a) Substantial increases in blood pressure may occur follow administration.
- (b) Administration should NOT be withheld due to hypertension however; patient will likely have a change in urine and secretion color as well as skin redness after administration.
- (c) Co-oximetry including carboxyhemoglobin levels can be inaccurate after administration due to the bright red color of the medication.

5.14.30.5 MRT or Teller County EMS Medication Administration:

- (a) Assure separate IV line (this medication cannot be given in the same line as the other medications).
- (b) Reconstitute the 5 gram vial of hydroxycobalamin with 200 mL of 0.9% normal saline (lactated ringers or D5W can be substituted if needed).
- (c) Use the spike on the hydroxycobalamin vial to introduce the normal saline INTO the hydroxycobalamin vial.
- (d) **The line on the hydroxycobalamin vial marks 200mL.**
- (e) Following the additions of the diluents (normal saline) to the vial, the vial should be repeatedly **inverted or rocked (NOT shaken) for at LEAST 60 seconds prior to infusion.**
- (f) Administer the medication IV over 15 minutes.
An additional dose of 5 grams hydroxycobalamin may be administered as above for a total dose of 10 grams depending on patient signs and symptoms.

5.14.31 Hydrochloric and Nitric Acid:

- (a) Hydrochloric Acid is used in the Met Lab in small quantities less than 1 gallon. Nitric Acid is used at the Met Lab In small quantities less than 1 gallon.

5.14.32 Response Procedure:

- (a) Personnel shall wear full protective clothing/gear and SCBA (For low concentrations of HCl, use acid gas respirators).
- (b) If the acid has breached a concrete containment, control spill with soil/sand.
- (c) Small spill dilute with NaOH and mop up or absorb with an inert material.
- (d) Control HCl vapors with water spray.
- (e) Remove contaminated materials under the direction of the Environmental department instructions.
- (f) Return spilled solutions to the process circuit

5.14.33 Propane/Natural Gas:

Propane is in limited use at CC&V and primarily for refill of smaller portable propane tanks. Natural gas is used to heat process, maintenance, office buildings and process solution.

5.14.34 Emergency Procedure:

Department	THIS DOCUMENT IS UNCONTROLLED IN HARD COPY FORMAT		Doc Id: NA-CCV-H&S-PLAN-1775
H&S	Date of This Issue: April 12, 2023	Date of Next Review April 12, 2026	Page 28 of 46

- (a) Extinguish/remove all sources of ignition from spill area.
- (b) Shut down source of fuel supply.
- (c) If the fuel leak is on fire do not put the fire out until the fuel leak has been shut off.

5.14.35 Diesel, Gasoline and Other Petroleum Products:

Gasoline and clear Diesel is located south of Mine Maintenance building. Diesel is located west of the lower ready line.

5.14.36 Emergency Procedure:

- (a) Extinguish/remove all sources of ignition from spill area.
- (b) Shut down source of fuel supply.
- (c) Use absorbent pads or other absorbent material to absorb the spill.
- (d) Non- dripping absorbent materials may be taken to the landfill dumpster.

5.14.37 Nuclear Incidents:

Detailed emergency response procedures are included in the Colorado Radioactive Material License's and in Hazardous Waste Contingency Plan.

5.14.38 In the event of a release or radioactive material:

- (a) Barricade: Leave the area and prevent others from entering the area with a suitable barricade.
- (b) Inform Supervisor: and provide the following information
 - (1) Location and description of in incident.
 - (2) Identification of persons involved.
 - (3) The nature and extent of any injuries.
 - (4) Time of incident.
 - (5) Inform radiation safety officer.

5.14.39 Site Control Nuclear Incidents:

Detailed emergency response procedures are included in the Colorado Radioactive Material License's and in Newmont's Rapid Response Procedures.

Medical Emergency Numbers:

Ironclad Security R-1 719-689-4127 or Ext 18127

*Note: If there are any inquiries from the media, they are to be referred to and handled by External Relations and General Manager. For any suspected response to anthrax or biological hazard emergencies, response procedures will be in accordance with MRT procedure dealing with anthrax and biological hazard emergencies. The intent of the emergency spill response plan is to provide essential information and the protocol to follow in the event of a hydrocarbon or chemical spillage.

5.15 Medical Emergencies/Accidents

5.15.1 In the event of a serious injury/accident, the first priority is prevention of additional injury. The first responder should take all precautions to prevent injury to his self and others prior to commencing a rescue. Move the victim only if they are in grave danger. Trained first aid personnel are scheduled on each shift and should be contacted as soon as possible to render aid and transport the injured

5.15.2 Assess the accident scene:

Department	THIS DOCUMENT IS UNCONTROLLED IN HARD COPY FORMAT		Doc Id: NA-CCV-H&S-PLAN-1775
H&S	Date of This Issue: April 12, 2023	Date of Next Review April 12, 2026	Page 29 of 46

- (a) Secure the scene before entering.
- (b) Identify the mechanism of injury.
- (c) Assess the victim with care.
- (d) Treat/Stabilize life-threatening injuries.

5.15.3 Notify the Ironclad Security or Mill Control by radio or phone. Follow the Mayday procedures State: "I have a medical emergency" and give location.

5.15.4 The area supervisor is responsible for:

- (a) Calling for the response of all emergency personnel needed and requesting radio silence when necessary.
- (b) Providing unobstructed access to and from the scene for emergency personnel and equipment.
- (c) Providing any additional support requested by emergency personnel.
- (d) Notifying Security, H&S, and Management.

5.15.5 Radio silence must be maintained during the emergency, when requested.

5.15.6 External phone calls, pictures, social media posting, contacting family, contacting media or government agencies is strictly prohibited.

5.15.7 Give the following information:

- (a) Your name
- (b) Location
- (c) Nature of the injuries and number of injured persons (do not give names)
- (d) Type of help needed, i.e., gear, transportation and personnel.
- (e) # of emergency personnel already on scene.
- (f) Make sure help is on the way.
- (g) Do not hang up until told to do so.

5.15.8 Fill out witness statement, first aid report or incident report as needed

5.15.9 All accidents/incidents will be investigated in accordance with Newmont North America Procedures.

5.15.10 All attempts should be made to prevent injured or ill persons from leaving the property unless accompanied by at least one other individual. If the company mine rescue vehicle is used, a minimum of two people must accompany the injured - An EMT or first responder to render aid and one other to drive. The mine rescue vehicle is not to leave site.

5.15.11 If a medical emergency or accident occurs that requires patient transport to the hospital, the supervisor, dispatch, mill control or security can call Sheriff Dispatch 9(911) and request Teller County EMS or alternate Air Transport.

5.16 Air Ambulance Landing Requirements & Coordinates

5.16.1 Helicopter Landing Zone Requirements:

- (a) Minimum clear area of 100' x 100' with a slope of less than 10 degrees.
- (b) Remove debris and unsecured items.
- (c) Alert access air ambulance of surrounding hazards; power lines, trees, etc.
- (d) Assist the pilot in landing.

Department	THIS DOCUMENT IS UNCONTROLLED IN HARD COPY FORMAT		Doc Id: NA-CCV-H&S-PLAN-1775
H&S	Date of This Issue: April 12, 2023	Date of Next Review April 12, 2026	Page 30 of 46

- (e) One emergency vehicle with flashing light adjacent to landing site.
- (f) At night, turn off headlights and spotlights just prior to landing.
- (g) Use flags to indicate wind direction.
- (h) Keep crowds back 100 ft. from helicopter at all times.
- (i) Never approach the aircraft from the rear or while the blades are in motion, unless signaled to do so by the pilot.

5.16.2 Landing zones

- (a) **Ironclad #1** – Helicopter Pad located North West of Ironclad Building. North 38 degrees 44min.47.4533 sec. by West 105' 08 min. 56.801 sec. Elevation 10482.09
- (b) **Victor #2** – Helicopter Pad North 38 degrees 42' 63 West 105 degrees 7' 94

5.17 Fatal/Potentially Fatal Accidents

5.17.1 Accidents which result in fatalities require special action.

- (a) **H&S manager must be called immediately!**
- (b) If the injured party is clearly and definitely deceased, the remains are not to be moved until authorization is received from the Coroner and applicable regulatory agencies.
- (c) The H&S department has the responsibility to coordinate with Security to ensure notification of the Coroner.
- (d) H&S takes the lead in reporting fatalities to MSHA.

5.17.2 In the event of an on-the job fatality, the following responsibilities shall apply:

5.17.2.1 The Immediate Supervisor/or his/her designee will:

- (a) Suspend work activity in and around the accident scene. Evacuate all personnel to a staging area. Barricade the area surrounding the accident scene to ensure evidence is preserved.
- (b) The above step for securing the scene should also be followed in the event of any serious or major property damage (greater than \$250,000).
- (c) Notify promptly the following:
 - (1) Emergency Response Team.
 - (2) His or her immediate Supervisor who in turn will notify the Department Manager and the Functional Area Manager.
 - (3) A representative from the Health and Safety Department who will in turn notify the H&S Manager who will advise the Regional Director of H&S.
 - (4) Confine the information to the facts of the accident. Radio discussions of the accident must be limited to emergency information only. Names or equipment numbers will not be broadcast.
 - (5) Preserve the accident scene and all physical evidence. Accident site visits will be limited to only necessary emergency response personnel, security personnel and appropriate management.

5.17.2.2 The Director of Human Resources will:

- (a) Notify the Manager of External Relations.
- (b) File a notice of industrial accident to the company Workers' Compensation administration to file.

Department	THIS DOCUMENT IS UNCONTROLLED IN HARD COPY FORMAT		Doc Id: NA-CCV-H&S-PLAN-1775
H&S	Date of This Issue: April 12, 2023	Date of Next Review April 12, 2026	Page 31 of 46

- (c) Notify the next of kin as promptly as circumstances allow. Company officials and the coroner or his representative must make this notification.
- (d) Ensure that crisis counseling is available for co-workers and response personnel, as soon as practical, after the accident.

5.17.2.3 The H&S Manager will:

- (a) Upon notifying and receiving approval from the Health and Safety Regional Director (who advises the Vice President of Operations or designate of the decision to notify) will notify the appropriate Federal Agencies as soon as possible.
- (b) Coordinate the legal requirements of all local, state, and federal agencies that have jurisdiction in the case. Coordinate the gathering of all records that the government agency's request during their investigation.
- (c) Conduct a briefing session with representatives from the MSHA, and County Sheriff's Department prior to their inspection of the accident site.
- (d) Report the facts of the accident, after the investigation has been completed, in writing to the General Manager, Department Manager, Director of Health and Safety and the Director of Human Resources. Include copies to be sent to MSHA, and County Sheriff's Department, after approval by the Operations Director.

Note* No information will be given to any other source or agency without authorization from the Regional Director of Operations.

5.17.3 Release the accident site as soon as possible, being consistent with the requirements of the law and governmental agencies.

5.17.4 The Functional Area Manager:

- (a) Promptly advise the Vice President of Operations for the region of the facts of the fatality/injury.
- (b) Ensure all procedures are followed.

5.17.6 The Investigation Team:

- (a) Due to the nature of fatalities, special emphasis is taken to investigate the accident, determine the causes and take the necessary steps to prevent any reoccurrence. All fatalities will be investigated by a Special Investigation Team, consisting of:
 - (1) The Functional General Manager
 - (2) The Department Manager
 - (3) The Superintendent of the Area Affected
 - (4) H&S Manager and Regional Director
 - (5) Others, as determined by the Regional Director of Operations and as circumstances require, e.g. technical advisors.
 - (6) The supervisor is responsible for completing a preliminary report of the accident. The Investigation Team will complete and distribute the final report as appropriate.

5.17.7 The Manager of External Relations will:

- (a) Be the sole and immediate contact with the Press.
- (b) Following the notification of next of kin, and with approval of the Executive Director of Operations, prepare and distribute a holding statement.
- (c) Notify the Head of Corporate P.R.

5.17.8 The Manager of Security will:

Department	THIS DOCUMENT IS UNCONTROLLED IN HARD COPY FORMAT		Doc Id: NA-CCV-H&S-PLAN-1775
H&S	Date of This Issue: April 12, 2023	Date of Next Review April 12, 2026	Page 32 of 46

- (a) Secure the Company's security gates to prevent press officials and other unauthorized people from entering the mine property.
- (b) Contact IT to shut down the guest wireless network.
- (c) After receiving permission from the Director of Health and Safety, and in the presence of a witness, impound and catalog the personal effects of the deceased and forward them to the Director of Health and Safety, who will provide to the Director of Human Resources for delivery to the deceased's family.
- (d) Notify the appropriate Coroner and Police departments of the fatality.

5.17.10 Regional Legal Counsel will:

- (a) Contact corporate legal to discuss the work related fatality.
- (b) Contact the retained Legal MSHA consultant to advise and discuss.

5.18 Premature Blast or Unplanned Explosion

5.18.1 In the event of a premature blast or unplanned explosion:

- (a) The employee involved shall notify their Supervisor giving all known details.
- (b) All equipment and materials shall be left in place.
- (c) Any mobile equipment not involved must evacuate the area.
- (d) The area shall then be secured for investigation.
- (e) After securing the area, the Supervisor will notify the H&S Manager for MSHA reporting.
- (f) H&S will assist with the investigation as soon as possible following the incident.

5.18.2 In the event H&S are unavailable, notify the first person you can according to the following list. The first person contacted will assume responsibility for contacting the others on the list:

- (a) General Manager
- (b) Department Manager
- (c) Department Superintendent
- (d) General Foreman

5.18.3 All blasting and mining equipment affected by the blast will be checked for defects and damages before being released for use.

5.18.4 The H&S Manager shall report the results of the investigation to the General Manager. If appropriate, the cause(s) of the unplanned event and corrective action taken should be relayed to all affected employees during a subsequent safety meeting.

5.18.5 If an injury has occurred, refer to the Medical Emergencies/Accidents Section of this manual for proper response procedures.

5.18.6 MSHA requires immediate reporting for the following:

- (a) An unplanned ignition or explosion of gas or dust at a mine.
- (b) An unplanned mine fire not extinguished within 30 minutes of discovery.
- (c) An unplanned ignition or explosion of blasting agent or an explosive at a mine.

5.18.7 H&S management is responsible for notifying MSHA within the prescribed time limit. H&S shall also notify the Division of Reclamation Mining and Safety.

Department	THIS DOCUMENT IS UNCONTROLLED IN HARD COPY FORMAT		Doc Id: NA-CCV-H&S-PLAN-1775
H&S	Date of This Issue: April 12, 2023	Date of Next Review April 12, 2026	Page 33 of 46

5.19 Motor Vehicle Accidents

5.19.1 Accidents involving personnel and motor vehicles can occur at any time or place either on the mine site or off.

5.19.2 The first priority in responding to a motor vehicle accident is to establish if injury has occurred, to preserve life and render prompt and effective assistance.

5.19.3 Precedence is to be directed towards saving lives, regardless of whether company property is at risk. If persons are injured as a result of a motor vehicle accident refer to the medical emergencies section.

5.19.4 After all injured persons have been treated; efforts may be directed towards preserving company property.

5.19.5 At the discretion of management, tasking may be directed towards removing the vehicle and restoring the accident site to its normal working condition, only after all risks to personnel have been negated.

5.19.6 Any motor vehicle accident off of the mine property must be reported to the proper authorities (State, County or City). This includes single vehicle incidents, for example: pick up and cow collisions, single vehicle rollovers, etc. For injury incidents call **(911)**, for non-injury incidents call Teller County dispatch at **719-687-9652** and they will make sure the correct jurisdiction is notified.

5.19.7 The applicable department head and H&S is to be notified as soon as possible.

5.20 Equipment/Light Vehicle/Person in a void

5.20.1 Equipment/Light Vehicle/ Person in a void

- (a) In the event any of the above listed unexpectedly enters a void, a Mayday shall be called. All MRT personnel are to report to the scene. CCFD shall be notified immediately and advised that we have a void rescue. The aerial is requested along with SWTC ambulance. A person from the voids group or GEO tech group shall be notified immediately as well as a member of the H&S team.
- (b) An attempt to contact the person shall be made from a safe location to see if there are any injuries and current conditions in the void. Operator should be reminded at this time to stay in the cab if applicable. In the event there is a trapped miner or no communication can be made, the H&S manager or representative shall be notified immediately.
- (c) Upon arrival, MRT will take command of the scene and do a complete scene assessment, designation of the rescue area and order more resources if needed (Divide Fire High Angle Team). MRT will coordinate a rescue plan with CCFD and the GEO tech. voids group. The rescue will be carried out per the plan.
- (d) Newmont's fall protection policy will be followed at all times when working within 10' of the void. All rescues will be performed using the Mine Rescue high angle guidelines and a two rope system.

5.21 Severe Weather Conditions/Natural Disasters

Department	THIS DOCUMENT IS UNCONTROLLED IN HARD COPY FORMAT		Doc Id: NA-CCV-H&S-PLAN-1775
H&S	Date of This Issue: April 12, 2023	Date of Next Review April 12, 2026	Page 34 of 46

5.21.1 In severe weather, seismic, or other natural disaster situations, the supervisor will keep personnel away from high risk areas created by the condition.

5.21.2 Examples Are:

- 1) High winds or earth movement
 - a. Stay away from power lines, high walls, and embankments that may be affected.
 - b. Lifts involving cranes and/or working at heights shall be suspended
- 2) Extreme precipitation (heavy rain, snow)
 - a. Keep personnel and equipment out of possible flash flood areas.
 - b. When visibility is limited, traffic will cease on the haul roads. TARP
- 3) Heavy snow
 - a. Maintain accessibility for personnel and emergency equipment.
 - b. In the event of public road closures, appropriate accommodations will be provided
- 4) Lightning
 - a. Keep personnel out of non-protected elevated areas and other high-risk situations.
 - b. Outdoor work will cease and those affected will immediately seek shelter.

5.21.3 In the event of severe weather conditions or other natural disaster situations, the shift supervisor shall notify the department manager and/or general manager for instructions. The supervisor is responsible for maintaining the safety and welfare of his crew.

5.21.4 The supervisors of each department will take steps to notify off-shift personnel of changes in schedules, duration of closure, and other pertinent information as instructed by the department manager.

5.21.5 Process components (leach pads and ponds, power lines, etc.) should be evaluated by the supervisor with appropriate action taken.

5.21.6 Floods:

Floods can be a problem and are a safety issue predominantly when crossing flooded creeks and previously dry gullies.

- (a) Do not cross floodways if the depth of water is unknown or greater than one foot.
- (b) If the depth is less than one foot but the water is flowing very fast, discretion must be used.
- (c) If the depth of water is less than one foot, stop. Cross slowly in the center of the road.
Engage 4 wheel drive if available.
- (d) After traversing floodway, test brakes before continuing.
- (e) If vehicle stalls in floodway, remain inside the vehicle and call for help via the radio or cell phone if available. Wait for help to arrive.
- (f) If another vehicle is stopped in a floodway, ensure your own safety and call for help on the radio or cell phone if available. Wait for the appropriate help to arrive.

5.22 Earthquakes

5.22.1 In the event of an earthquake, there are actions to be taken during the quake and there are actions that should be done immediately following the quake. Please note that an earthquake is unpredictable and therefore, stay alert and aware of your surroundings. The following is a list of items to do in the event of an earthquake.

5.22.2 If you are inside a building:

- (a) Do not run for the exits. (Most people injured in earthquakes by falling objects).
- (b) Crouch under a heavy desk or table or stand in a doorway and brace yourself.

Department	THIS DOCUMENT IS UNCONTROLLED IN HARD COPY FORMAT		Doc Id: NA-CCV-H&S-PLAN-1775
H&S	Date of This Issue: April 12, 2023	Date of Next Review April 12, 2026	Page 35 of 46

- (c) Move away from windows or other objects that could break, fall or shatter.
- (d) Expect fire alarms and sprinkler systems to activate.

5.22.3 If you are outside:

- (a) Stay away from the collapse zone of buildings, utility poles and lines and other structures that could fall.
- (b) Move away from high walls, stockpiles or any area where ground control could be compromised.

5.22.4 If you are in a vehicle:

- (a) Stop the vehicle and stay inside until the shaking stops.
- (b) Do not stop near structures or buildings that could fall.
- (c) Move away from high walls, stockpiles or any area where ground control could be compromised.

5.22.5 After the quake:

- (a) Quickly assess your area for secondary emergency situations such as fires, chemical spills or explosions. If there are injuries or other emergencies requiring response teams, report the situation as described on front page. (Please be aware that help or medical aid may not be immediately available).
- (b) Do not perform any activity that may cause a spark, including lighting of matches.
- (c) Evacuate the area, if either your location is unstable or you are notified to.
- (d) Upon evacuation, move upwind (and uphill if possible) of all facilities.
- (e) Anticipate subsequent aftershocks.
- (f) Have maintenance personnel inspect and isolate utilities.
- (g) Site Emergency Response Teams will be activated for major earthquakes or other natural disasters to assist departments with inspections of areas to insure they are safe.
- (h) Maintenance and engineering personnel should inspect areas for any damage that could pose a threat to personnel.
- (i) Only after maintenance inspections are completed and the results are reviewed with the respective Superintendent(s), will personnel be allowed to return to buildings.

5.23 Emergency Utilities Shutdown

5.23.1 The utilities that will be considered under emergency shutdown are:

- (a) Propane/Natural Gas
- (b) Process Water
- (c) Fire Water
- (d) Electrical

5.23.2 The shutdown of these utilities in catastrophic events remains the responsibility of the mine/process facility maintenance personnel in conjunction with the Emergency Response Team.

5.23.3 Utility Emergency Shutdown:

The following personnel are able to shut off main supply disconnects in the utility areas if they properly trained to do so:

- (a) **Propane/Natural Gas:**

Department	THIS DOCUMENT IS UNCONTROLLED IN HARD COPY FORMAT		Doc Id: NA-CCV-H&S-PLAN-1775
H&S	Date of This Issue: April 12, 2023	Date of Next Review April 12, 2026	Page 36 of 46

- (1) Main tank control panels: Mine Maintenance Personnel, Process Maintenance/Process Operations Personnel
- (2) Main property distribution shut-off valves: Maintenance Personnel, Process Supervisor/Operator
- (3) Main building feed valves: Mine/Process Maintenance/Process Operations personnel, Area Supervisor, Emergency Response Team members.
- (b) **Fire Water System**
 - (1) Main supply valves at water tank (This will be done only on a management decision): Maintenance Personnel, Process Supervisor, Emergency Response Team
 - (2) **Main Building Shutoff:** Process Maintenance/Operations personnel, Area Supervisor, Emergency Response Team
- (c) **Process Water System:** Handling of hazardous materials is of prime consideration in process shutdown (i.e., pH balance for cyanide).
 - (1) Main supply valves and pumps: Process Operations personnel, Process Maintenance personnel
- (d) **Electrical System**
 - (1) Main transformers, MCC room building master closures: Electrical Personnel
 - (2) Equipment and area disconnects below 500v rating: Area Supervisor, Area Personnel and Emergency Response Team.

5.23.4 Area personnel are trained in the lock-out of electrical utilities up to 500v and will retain this responsibility. In catastrophic situations, electrical/maintenance personnel, in conjunction with the MRT, will assume responsibility for all main property and main building disconnects.

5.23.5 The master power substations, MCC rooms and the emergency power require the skills and knowledge of electrical personnel.

5.23.6 Only trained Electrical, Maintenance or Process Operations personnel are responsible for starting emergency power.

5.23.7 The Mine department has portable light plants available for use. These light plants are normally located on the heavy equipment “ready line” unless they are in use in the mine area. In case of power outage call. Black Hills Energy 1-800-694-8989

5.24 Off Site Support Training and Drills

5.24.1 Off Site Response:

- (a) Newmont will respond to off-site medical/accident emergencies when requested to do so, subject to the availability of the proper equipment, expertise.
- (b) Authorization to respond to off-site accidents, injuries, fires, chemical or hazardous material spills, if requested, is the responsibility of the General Manager or his designee.
- (c) Should the landowner (DOT, BLM or etc.) request support, the request will be in writing and the requestor should give permission for assistance and cleanup.
- (d) Response will not be given when liability or other legal uncertainties are present.

5.24.2 Newmont’s response will be limited to “first responder” status. Professional help should be called to terminate the emergency. Emergency transportation may be provided to meet the professional service enroot if the situation warrants.

Department	THIS DOCUMENT IS UNCONTROLLED IN HARD COPY FORMAT		Doc Id: NA-CCV-H&S-PLAN-1775
H&S	Date of This Issue: April 12, 2023	Date of Next Review April 12, 2026	Page 37 of 46

5.24.3 In the case of a transportation accident involving injury and a hazardous material spill, the first priority must be the safety of the employees. The decision to respond should be based on knowledge of the material spilled and the ability to help the injured without placing anyone in danger.

5.24.4 Support for Responding to Emergencies:

5.24.4.1 Newmont Sites:

Newmont personnel are responsible for the initial, technical and specialized response to onsite emergencies.

5.24.4.2 Area Mines:

Newmont will work with area mines in developing mutual aid agreements. Response to off-site emergencies requires management approval.

5.24.5 On Site Contractors:

Contractors are required to supply an Emergency Procedure Plan and Training Program to Newmont for approval.

5.24.6 Suppliers and Carriers:

- (a) Suppliers and Carriers are required to supply an Emergency Procedure Plan and Training Program to Newmont for approval.
- (b) Suppliers and Carriers responsible for transporting hazardous material must provide that vehicles and drivers meet or exceed all DOT rules and regulations regarding the transportation of hazardous material.
- (c) Suppliers, carriers and governmental agencies bear the primary responsibility to respond to hazardous chemical spills of their product prior to reaching Newmont mine sites.

5.24.7 Public Sector:

- (a) Newmont will work with local and State Emergency Planning Committees in developing mutual aid agreements.
- (b) Response to offsite emergencies requires a request from governmental agencies and Newmont management approval.

5.24.8 Annual Training Program:

- (a) This Plan can only be successful if training programs are instituted.
- (b) The main goal of the training programs is to prepare personnel in general and the members of the Emergency Response Team of Newmont Operations, to be able to act efficiently, speedily and safely during an incident.

5.24.9 Training for Employees:

All employees will receive training on pertinent sections of the site Emergency Response Plan.

5.24.10 Training for Management:

- (a) Site and Regional Rapid Response teams will receive annual training in use of the Newmont Rapid Response process.
- (b) All supervisors and lead men will receive training on the contents of the site Emergency Response Plan.

5.24.11 Carriers and Suppliers:

Department	THIS DOCUMENT IS UNCONTROLLED IN HARD COPY FORMAT		Doc Id: NA-CCV-H&S-PLAN-1775
H&S	Date of This Issue: April 12, 2023	Date of Next Review April 12, 2026	Page 38 of 46

Suppliers and Carriers responsible for transporting hazardous material, must provide proof of required DOT training regarding the transportation of hazard material.

5.24.12 Emergency Response Team Training Program:

Each of the courses described must have a purpose, performance objectives and training objectives. This way, it will be possible to evaluate the training program, the subjects and student learning (training objective):

- 1) Course on Fire Fighting
- 2) Course on Hazardous Materials Emergencies
- 3) Course on Advanced First Aid
- 4) Course on Vehicle and Equipment Rescue
- 5) Course on Rope Rescue
- 6) Course on the Incidents Command
- 7) Course on Confined Space Rescue

5.24.13 Drills Program:

For the training program to be successful, ensure an adequate response and an adequate revision of this plan, it is necessary to establish a Drills Program.

5.24.14 Unannounced Drills:

An unannounced drill must be conducted each year, with the actual mobilization of equipment and resources, in a real time simulation.

5.25 Procedures for Updating and Revising the Plan

5.25.1 In order to evaluate and keep the Emergency Plan current, regular audits will be established and conducted with the assistance of consultants.

5.25.2 Review of the plan will be conducted annually or after emergencies. Updates of all information gathered on the field as well as the results of the simulations will be reflected.

Department	THIS DOCUMENT IS UNCONTROLLED IN HARD COPY FORMAT		Doc Id: NA-CCV-H&S-PLAN-1775
H&S	Date of This Issue: April 12, 2023	Date of Next Review April 12, 2026	Page 39 of 46

Appendix A – Emergency Information

When you get a call for an emergency:

Find Out

- If it is a first aid call or threat to life or property.
- The nature of the emergency, location, and number of people involved.

If emergency is life threatening or unknown

- **Call Mayday**

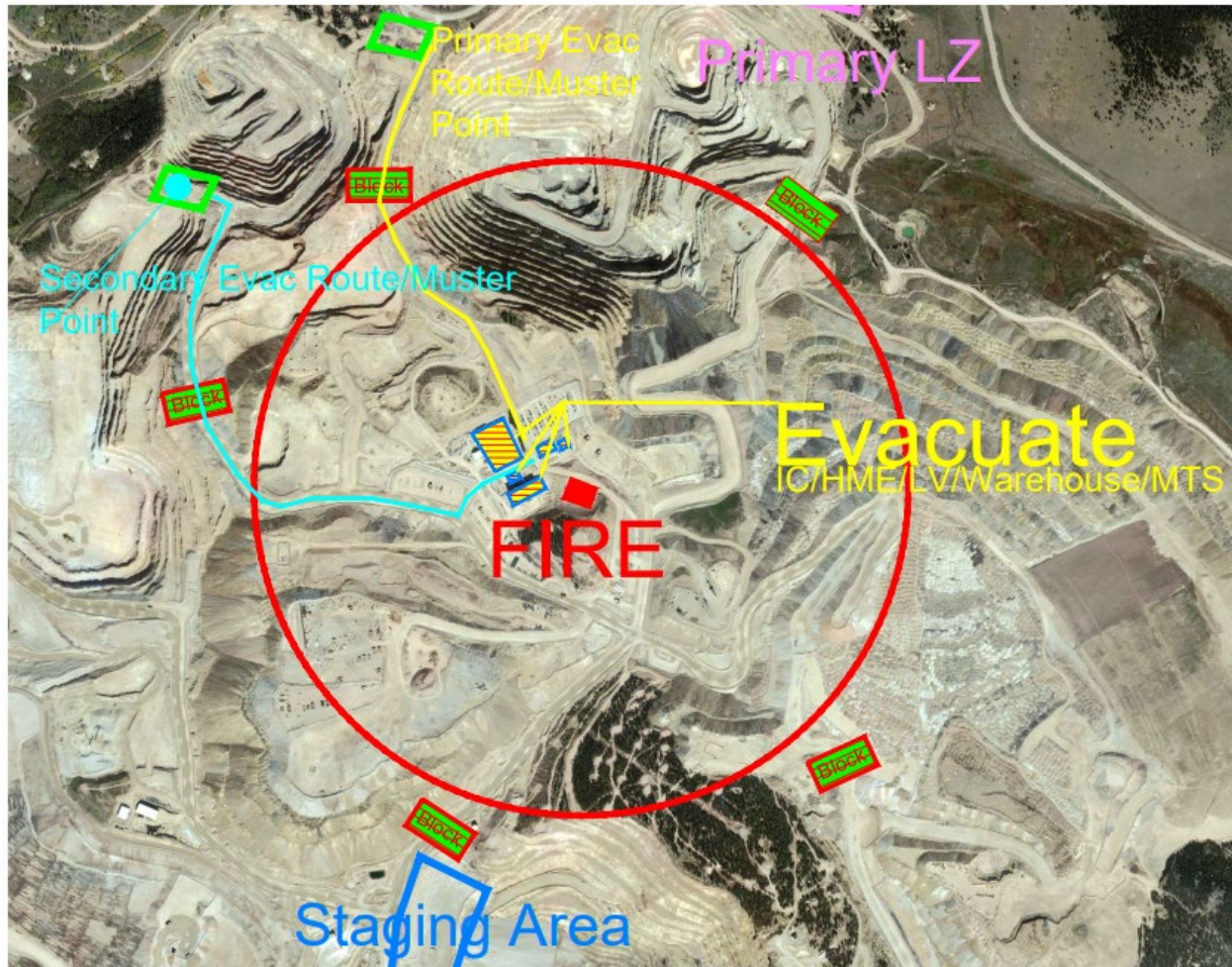
Inform Security of:

- Nature of the incident
- Location of the incident
- Number of people involved
- Who to contact and what channel to contact them on
- Call 911 and request an ambulance. Inform 911 that a CC&V team member will meet the ambulance at the designated Security Gate.
- Coordinate with supervisors, designee or rescue team to meet the ambulance at the gate. Escort them to the location.

Department	THIS DOCUMENT IS UNCONTROLLED IN HARD COPY FORMAT		Doc Id: NA-CCV-H&S-PLAN-1775
H&S	Date of This Issue: April 12, 2023	Date of Next Review April 12, 2026	Page 40 of 46

Appendix B- Explosive Fire Exclusion Zone Maps

Buckley Powder Plant Fire Evacuation Zone



Evacuate / Clear:

Ironclad, Warehouse, Tech Services, Heavy and light truck shops, Buckley plant, Tire Pad, Road Projects Crew area, Dump 1, West side Granite Island, Magazine, South East Globe Hill, Whex pits, Ecosa dump, new access road, Ecosa Conley toe road, Boart Lay Down Yard, School House Ready Line, State Fire connex.

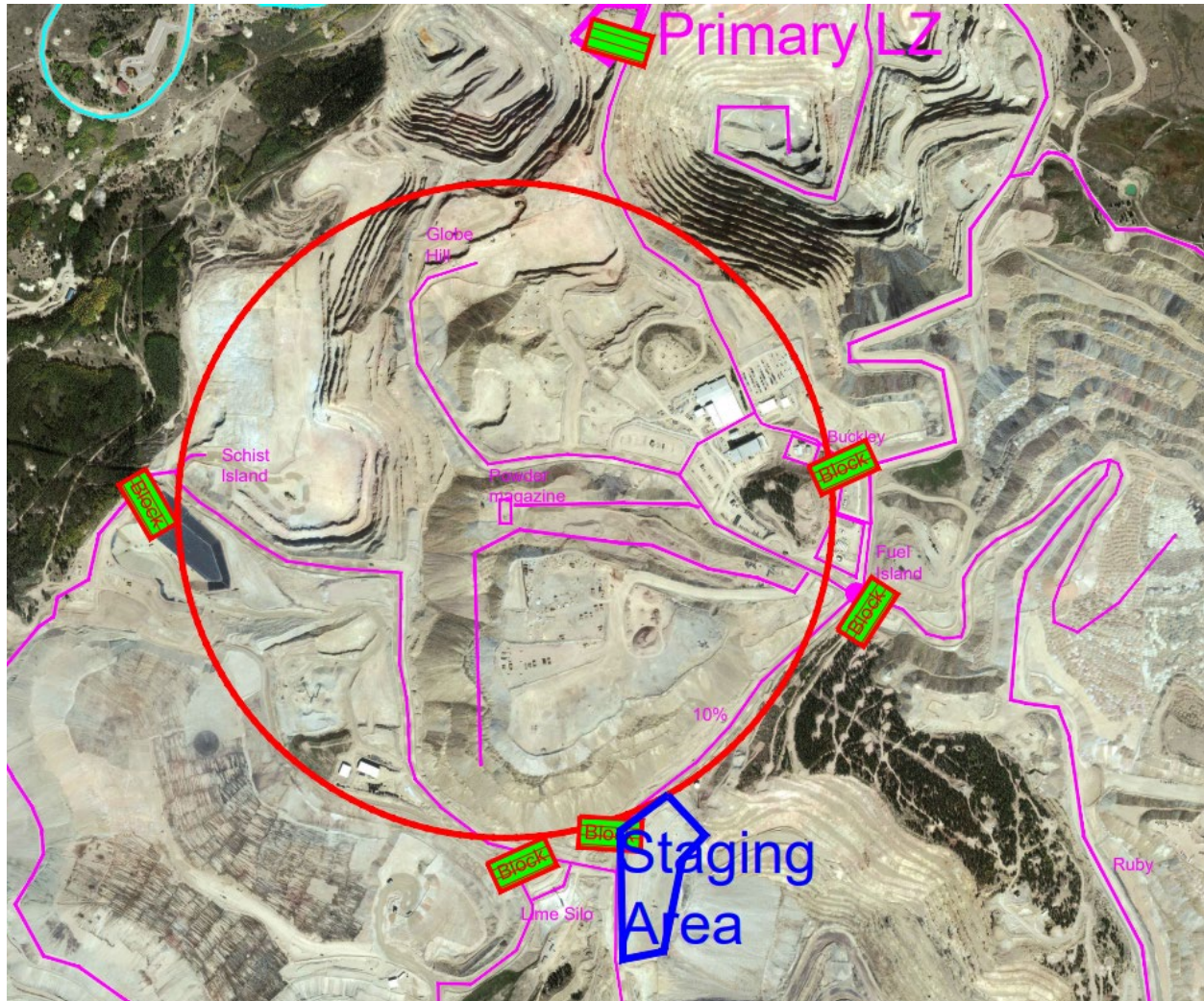
Road Blocks:

10 percent @ Schist Island, Ruby Rd. @ Blue East/West, Chapman Rd. @ Stemming SP, Main Access Road @ chain up area, Whex Ramp @ Ecosa toe, Reclaim Rd. @ 10800 ramp.

All personnel in Ironclad vicinity evacuate off site via Main Access Road, all others evacuate past road blocks.

Department	THIS DOCUMENT IS UNCONTROLLED IN HARD COPY FORMAT		Doc Id: NA-CCV-H&S-PLAN-1775
H&S	Date of This Issue: April 12, 2023	Date of Next Review April 12, 2026	Page 41 of 46

Magazine Fire Evacuation Zone



Evacuate / Clear:

Ironclad, Warehouse, Tech Services, Heavy and light truck shops, Buckley plant, Tire Pad, Road Projects Crew area, Dump 1, Globe Hill, Boart Lay Down Yard, State Fire connex, JHL work areas, Conley Construction work area, Brahma buildings, Upper VLF 2.

Road Blocks:

10% and Chapman @ Midway, 10 % @ Schist Island, Schist Island @ Delivery, New Access @ Ecosa toe, Goat trail @ Schist Island Ramp

Personnel in Ironclad vicinity can evacuate southeast portion of School House Ready Line or off site via Main Access Road.

Department	THIS DOCUMENT IS UNCONTROLLED IN HARD COPY FORMAT		Doc Id: NA-CCV-H&S-PLAN-1775
H&S	Date of This Issue: April 12, 2023	Date of Next Review April 12, 2026	Page 42 of 46

Schist Island Fire Evacuation Zone



Evacuate / Clear:

Schist Island Pit, Globe Hill pit, Upper VLF 2 Ph. III, JHL work area, Brahma buildings, northwest Dump 1, Bone yard

Road Blocks:

Chapman @ Shop Ready Line, Schist Island @ Delivery, Dump 1 Access, Magazine Access

Potential Offsite Road Blocks:

Highway 67 @ Overlook top of Tenderfoot Hill, Highway 67 @ snow gate bottom of Tenderfoot Hill, top of Molly Kathleen, other affected areas of Cripple Creek as needed.

Department	THIS DOCUMENT IS UNCONTROLLED IN HARD COPY FORMAT		Doc Id: NA-CCV-H&S-PLAN-1775
H&S	Date of This Issue: April 12, 2023	Date of Next Review April 12, 2026	Page 43 of 46

Globe Hill Fire Evacuation Zone**Clear / Evacuate:**

Ironclad, Warehouse, Tech Services, Heavy and light truck shops, Tire Pad, Road Projects Crew area, Globe Hill, Schist Island, Whex pit, Boart Lay Down Yard, State Fire connex, JHL work areas, Conley Construction work area and laydown yard.

Road Blocks:

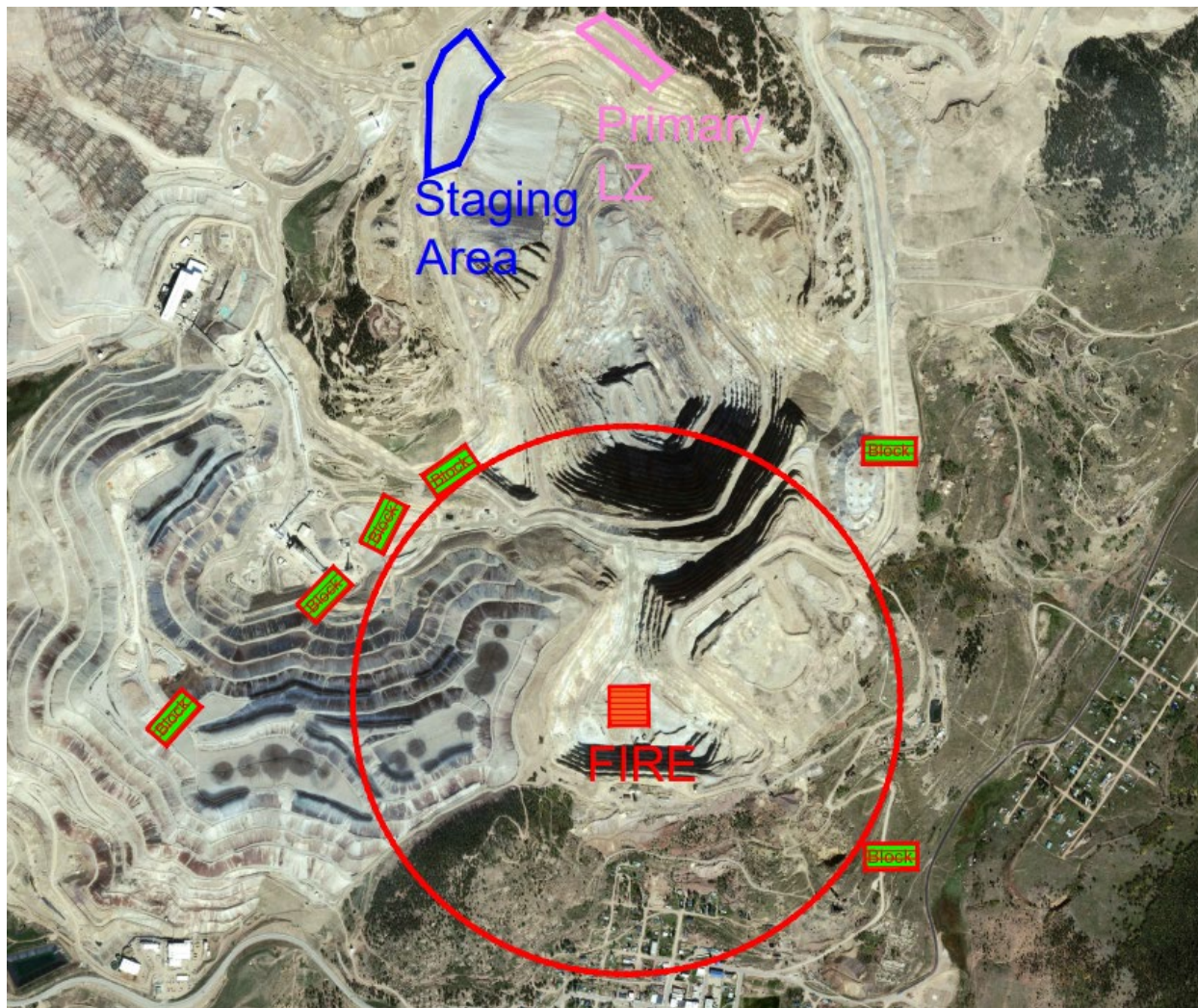
Schist Island @ Schist Island Ramp, Chapman @ 10%, School House access @ Whex Ramp

Potential Offsite Road Blocks:

County Road 821 @ Highway 67, Lower Molly Kathleen @ Highway 67, County Road 821, @ Whex Overlook

Personnel in Ironclad vicinity shall evacuate to School House Ready Line Muster Point. Main Access Road Cannot be utilized for evacuation.

Department	THIS DOCUMENT IS UNCONTROLLED IN HARD COPY FORMAT		Doc Id: NA-CCV-H&S-PLAN-1775
H&S	Date of This Issue: April 12, 2023	Date of Next Review April 12, 2026	Page 44 of 46

South Cresson Fire Evacuation Zone**Clear / Evacuate:**

VLF 1 Ph. V work areas, South Cresson Pit, South Cresson drill rigs, Ajax headframe area, Independence Trails, Tree Hill, any affected areas of Victor

Road Blocks:

Bottom Joe Dandy and Delivery @ intersection, Entrance to Finger Dump, Crusher Access Road @ crusher water stand

Potential Offsite Road Blocks:

TBD by local Law Enforcement

Department	THIS DOCUMENT IS UNCONTROLLED IN HARD COPY FORMAT		Doc Id: NA-CCV-H&S-PLAN-1775
H&S	Date of This Issue: April 12, 2023	Date of Next Review April 12, 2026	Page 45 of 46

Company Emergency Contacts:

Emergency Response Coordinator	Lance Tidemann	719-252-2544
S&ER Manager	Katie Blake	719-851-4048
H&S Manager	Gary Sundquist	719-851-4094
Security	Jeff Roberts	719-851-6452

S&ER On Call	719-851-4300
-------------------------	--------------

Health & Safety On Call	719-851-4328
------------------------------------	--------------

Ironclad Security:	719-851-4127
---------------------------	--------------

County Emergency Contact Numbers:

Teller County Ambulance, Fire, Sheriff	719-687-9652 or 911
Teller County Coroner's Office	719 641 2469
Cripple Creek Fire Dept.:	719-689-0240
Cripple Creek Fire P.D:	719-689-2655
Pikes Peak Regional Hospital	719-687-9999
MSHA Incident Reporting	1800-746-1553 (Mine ID 0503695)

Department	THIS DOCUMENT IS UNCONTROLLED IN HARD COPY FORMAT		Doc Id: NA-CCV-H&S-PLAN-1775
H&S	Date of This Issue: April 12, 2023	Date of Next Review April 12, 2026	Page 46 of 46