

Newmont Mining Corporation
 Cripple Creek & Victor Gold Mine
 Liner Repair CQA
 NewFields Job No. 475.0106.068
 Week Ending Friday, March 22, 2024



FIELD WEEKLY PROGRESS REPORT

PROJECT: VLF2 PHASE 3 STAGE A.1 LINER REPAIR
SITE: CRIPPLE CREEK & VICTOR GOLD MINE (COLORADO)
CONTRACTOR: NEWMONT CC&V MINING OPERATIONS
 JHL CONSTRUCTORS
WEEK ENDING: FRIDAY, MARCH 22, 2024

REPORTING PERIOD: 03.16.2024 THROUGH 03.22.2024

Days	Sat	Sun	Mon	Tue	Wed	Thu	Fri
Work Shifts – JHL	-	-	D	D	D	D	D
D – DAYSHIFT		N – NIGHTSHIFT			W – WEATHER		

AMBIENT TEMPERATURE RANGES AND WEATHER CONDITIONS:

HIGHS: 38°F TO 48°F

LOWS: 17°F TO 27°F

CLOUD COVER: PARTLY CLOUDY - CLOUDY

PRECIPITATION: TRACE SNOW 3/16-3/17 (LESS THAN 1" ACCUMULATION)

WIND: WIND GUSTS UP TO 22 MPH

NEWFIELDS PERSONNEL ONSITE:

Personnel	Sat	Sun	Mon	Tue	Wed	Thu	Fri
	Mar. 16	Mar. 17	Mar. 18	Mar. 19	Mar. 20	Mar. 21	Mar. 22
Jay Moore	-	-	-	-	-	-	-
Tyler Wendlandt	-	-	PR	PR	PR	PR	PR
PR – Project Resident; LS – Lead Soils Technician; LG – Lead Geosynthetics; ST – Soils Technician; GT - Geosynthetics Technician; LT – Laboratory Technician; PCE – Project Certifying Engineer							



1.0 CC&V AND CONTRACTOR OPERATIONS

1.1 Earthworks

1.1.1 Excavation

JHL Constructors removed accumulated snow from the winter storm that occurred on 3/14 to 3/15. A John Deere 750L dozer, three to four ECR88D mini excavators, and two skid steers removed the snow off of the Drain Cover Fill and placed the snow outside of the project limits. A John Deere 524 loader, working on the access road and within the PSSA limits, assisted in the stockpile management.

JHL Constructors continued to excavate the remaining 3' of Run of Mine (ROM) material from the surface of the Drain Cover Fill material in Cell 5 and Cell 6 above the Geomembrane surface. A John Deere 750L dozer pushed ROM material off the Drain Cover Fill (DCF) surface and stockpiled outside of the project limits. Three to four Volvo ECR88D mini excavators provided support for the dozers and removed ROM material from the 2:1 slope above the PSSA. The ECR88D excavators worked in sync to excavate material working upwards on the 2:1 slope. The DCF surface was left in-tact with minimal disturbance during the work. The ROM material excavation was completed 3/19/24.

Once the ROM excavation was completed JHL constructors began to remove DCF and expose the liner surface. Three to four ECR88D mini-excavators excavated approximately 1.5' of DCF. One to two laborers spotted for each excavator and removed the final approximate 0.5' of DCF with flat shovels. Two skid steers hauled and stockpiled the DCF material outside of the project limits. The John Deere 750L dozer managed the stockpiled DCF.

1.1.2 Geomembrane

No work during the week.

1.1.3 Drain Cover Fill

No work during the week.

1.2 Laboratory Testing

None.

2.0 MEETINGS AND COMMUNICATIONS

- NewFields personnel met with Jason Lohmeier (CC&V Operations) and Lupe Felix (JHL) daily to discuss progress and project specifications.



3.0 MISCELLANEOUS, ISSUES, AND CONCERNS

- No displacement of DCF material from previous stacking of ROM was noted during the excavation process.
- The High-Volume Solution Collection piping system was determined to be in-tact and had not crushed or shifted during ROM placement. Damage occurred during the excavation of the DCF.
- The geomembrane surface showed no significant signs of movement or strain from the ROM placement once exposed.
- Any geomembrane damage created by the excavation of the DCF layer was marked and covered by sand bags to prevent meteoric water from contacting and damaging the Soil Liner Fill (SLF) surface.
- ForeSight West was onsite 3/18/24 and 3/19/24 providing survey support.
- It is anticipated that JHL will complete exposing the geomembrane surface with-in the project limits during the Week Ending Friday, March 29, 2024. Mustang Extreme Environmental has been tentatively scheduled for Wednesday, March 27th, 2024 for the geomembrane work.



4.0 PHOTOGRAPHS



March 18, 2024 – Foresight West Survey Support.



March 19, 2024 – Removal of ROM material up 2:1 slope..

Newmont Mining Corporation
Cripple Creek & Victor Gold Mine
Liner Repair CQA
NewFields Job No. 475.0106.068
Week Ending Friday, March 22, 2024



March 19, 2024 – Completion of Removal of ROM material on 2:1 slope.



March 20, 2024 – HVSC 4 inch CPeP Perforated Pipe After Excavation.



March 21, 2024 – Exposed Geomembrane Surface on 2:1 Slope.

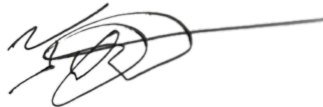


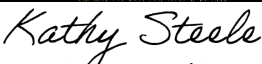


March 22, 2024 – Exposed Geomembrane Surface on 2:1 Slope.

Newmont Mining Corporation
 Cripple Creek & Victor Gold Mine
 Liner Repair CQA
 NewFields Job No. 475.0106.068
 Week Ending Friday, March 22, 2024

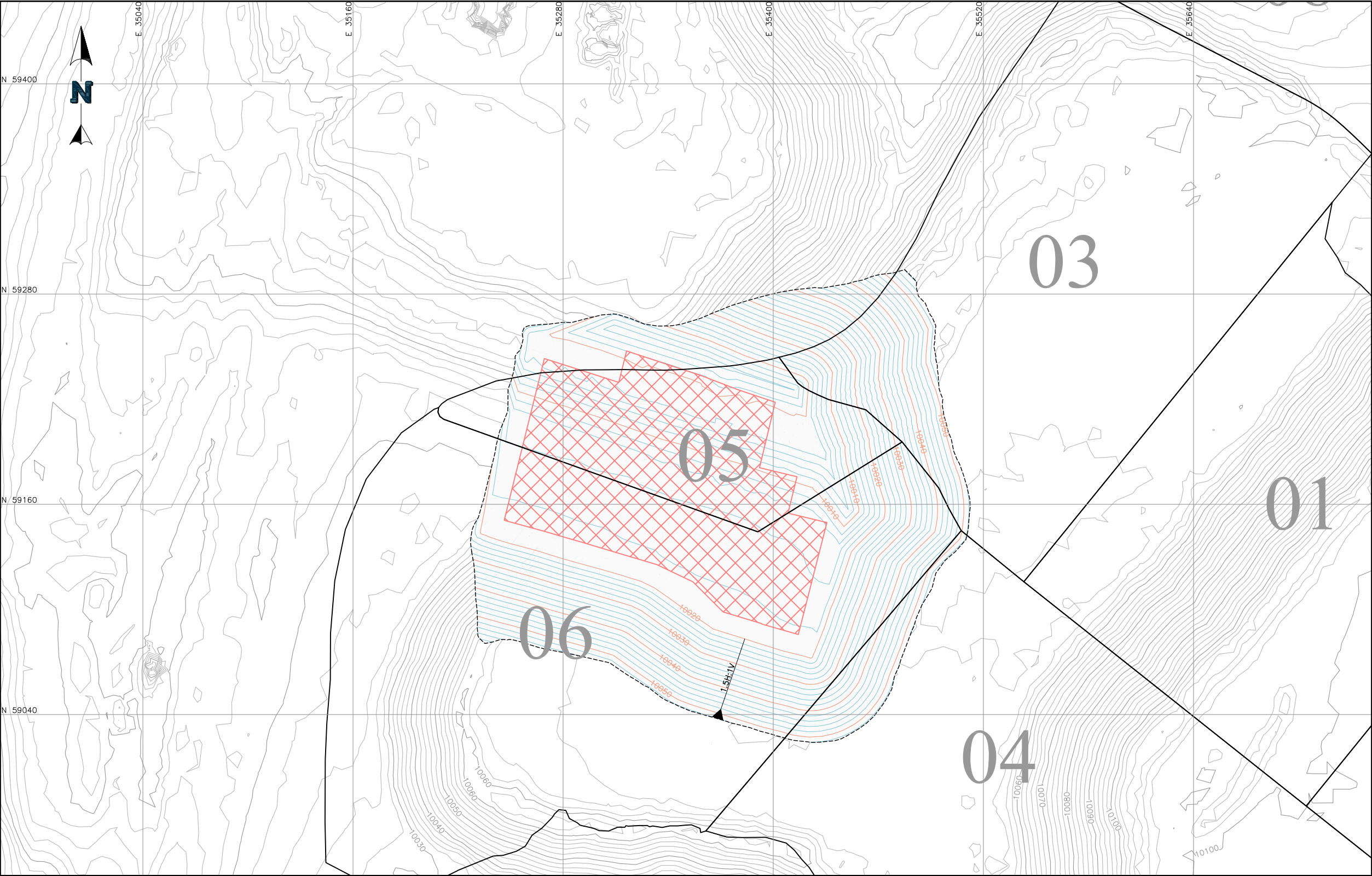


Report Review and Approval:

Role	Name	Signature
CQA Monitor/Report Prepared By	Tyler Wendlandt	
<i>Technical Services Manager or Designee:</i>	Kathy Steele	
<i>S&ER Manager or Designee:</i>	Katie Blake	DocuSigned by:  5A3D013B629844B
<i>Mine Manager or Designee:</i>	Tige Brown	 For Tige Brown this week

Attachments:

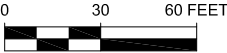
Figure 1 – VLF2 Phase 3A.1 Repair Limits of Excavation with Cell Boundaries




LEGEND:

- 2/20/2024 GROUND CONTOURS
- PROPOSED EXCAVATION
- LIMITS OF GEOMEMBRANE LINER REPLACEMENT
- APPROXIMATE ORE CELL BOUNDARY

DRAFT



		CLIENT CRIPPLE CREEK & VICTOR GOLD MINING COMPANY	
PROJECT		VLF2 PHASE 3A.1 REPAIR	
TITLE		FILENAME	
		106.065.001F	
LIMITS OF EXCAVATION		FIGURE NO.	REVISION
		2	0