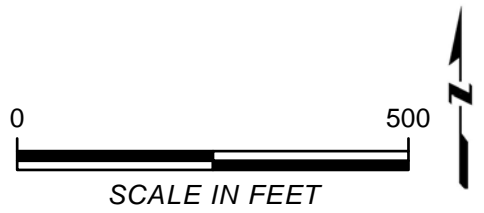


LEGEND

- 200 FT OFFSET
- OIL AND GAS
- TELECOMMUNICATIONS (TDS TELECOM AND ZAYO BANDWIDTH)
- NATURAL GAS LINE (XCEL ENERGY AND DCP MIDSTREAM)
- OVERHEAD POWERLINE (XCEL ENERGY AND CENTURY LINK)
- WATER LINE (LITTLE THOMPSON WATER DISTRICT)
- DIRT ROAD
- PROPERTY & PERMIT BOUNDARY

NOTES:
WEED MANAGEMENT INCLUDES
SPOT WEED SPRAYING AND
CONTROLLED CATTLE GRAZING

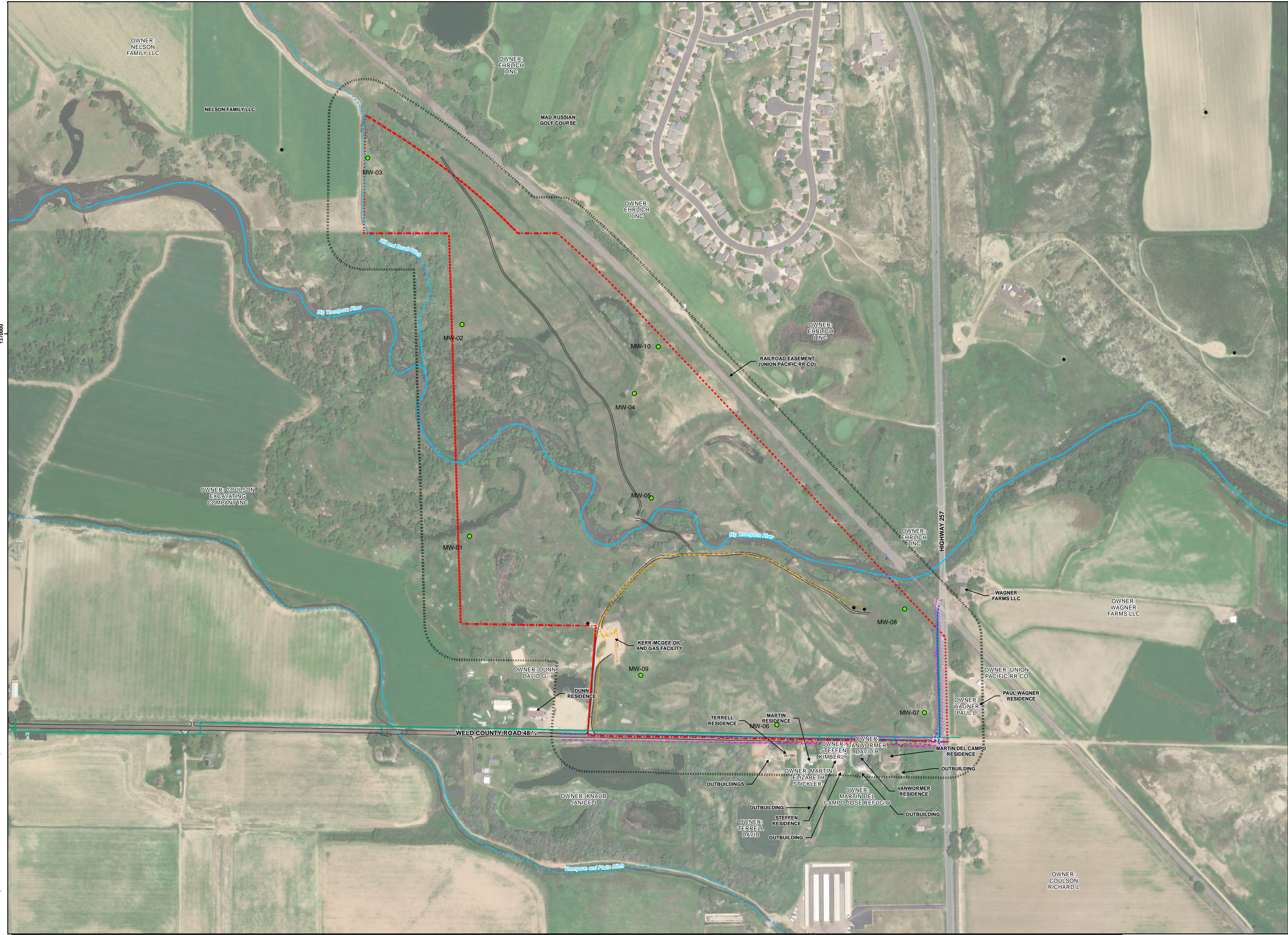


NOTE(S)
ZONING DATA ACCESSED FROM THE WELD COUNTY PROPERTY PORTAL
Coordinate System: NAD 1983 StatePlane Colorado North FIPS 0501 Feet

DUNN PIT M2021-059
2023 ANNUAL REPORT MAP
WELD COUNTY, COLORADO

PREPARED BY:
TELESTO
SOLUTIONS CORPORATION
Loveland, Colorado (970) 484-7704
www.telesto-inc.com

PREPARED FOR:
LOVELAND READY MIX CONCRETE



1370000