

Newmont Mining Corporation
 Cripple Creek & Victor Gold Mine
 Liner Repair CQA
 NewFields Job No. 475.0106.068
 Week Ending Friday, March 15, 2024



FIELD WEEKLY PROGRESS REPORT

PROJECT: VLF2 PHASE 3 STAGE A.1 LINER REPAIR
SITE: CRIPPLE CREEK & VICTOR GOLD MINE (COLORADO)
CONTRACTOR: NEWMONT CC&V MINING OPERATIONS
 JHL CONSTRUCTORS
WEEK ENDING: FRIDAY, MARCH 15, 2024

REPORTING PERIOD: 03.09.2024 THROUGH 03.15.2024

Days	Sat	Sun	Mon	Tue	Wed	Thu	Fri
Work Shifts – JHL/KTI	-	-	D	D	D	W	W
D – DAYSHIFT	N – NIGHTSHIFT			W – WEATHER			

AMBIENT TEMPERATURE RANGES AND WEATHER CONDITIONS:

HIGHS: 25°F TO 47°F

LOWS: 17°F TO 26°F

CLOUD COVER: PARTLY CLOUDY - CLOUDY

PRECIPITATION: WEDNESDAY PM-FRIDAY AM HEAVY SNOW (28"-36")

WIND: WIND GUSTS UP TO 30 MPH

NEWFIELDS PERSONNEL ONSITE:

Personnel	Sat	Sun	Mon	Tue	Wed	Thu	Fri
	Mar. 9	Mar. 10	Mar. 11	Mar. 12	Mar. 13	Mar. 14	Mar. 15
Jay Moore	-	-	-	-	-	-	-
Tyler Wendlandt	-	-	PR	PR	PR	-	-
PR – Project Resident; LS – Lead Soils Technician; LG – Lead Geosynthetics; ST – Soils Technician; GT - Geosynthetics Technician; LT – Laboratory Technician; PCE – Project Certifying Engineer							



1.0 CC&V AND CONTRACTOR OPERATIONS

1.1 Earthworks

1.1.1 Excavation

Newmont Operations continued to excavate Run of Mine (ROM) and Crushed Ore material from the repair project limits. A 6015B shovel/excavator excavated material from Cell 5. A 993 loader assisted the 6015B with stockpile management. The equipment worked on a platform approximately 20' to 25' above the geomembrane surface. The 6015B excavated material to approximately 5' above the geomembrane surface.

JHL Constructors and Newmont Operations began to excavate the remaining 3' of ROM material from the surface of the Drain Cover Fill material in Cell 5 and Cell 6 above the Geomembrane surface. A John Deere 750L and D6 LGP dozer pushed ROM material off the Drain Cover Fill (DCF) surface and stockpiled outside of the project limits. Three Volvo ECR88D mini excavators provided support for the dozers and removed ROM material from the 2:1 slope above the PSSA. The ECR88D excavators worked in sync to excavate material working upwards on the 2:1 slope. The DCF surface was left in-tact with minimal disturbance during the work.

1.1.2 Geomembrane

No work during the week.

1.1.3 Drain Cover Fill

No work during the week.

1.2 Laboratory Testing

None.

2.0 MEETINGS AND COMMUNICATIONS

- NewFields personnel met with Daniel Egley (CC&V Operations) and Lupe Felix (JHL) daily to discuss progress and project specifications. Also discussed on Wednesday was the winter storm warning. It was agreed that the 2' layer of DCF above geomembrane should be left in place and that no geomembrane be exposed ahead of the weather.

3.0 MISCELLANEOUS, ISSUES, AND CONCERNS

- No displacement of DCF material from previous stacking of ROM was noted during the excavation process.



- Inclement weather (heavy snow) took place from Wednesday night to Friday morning. No construction activity took place 3/14 and 3/15 due to weather.
- It is anticipated that JHL will begin to expose the geomembrane surface during the Week Ending Friday, March 22, 2024 after snow removal.

4.0 PHOTOGRAPHS



March 12, 2024 – DCF Surface after ROM removal.

Newmont Mining Corporation
Cripple Creek & Victor Gold Mine
Liner Repair CQA
NewFields Job No. 475.0106.068
Week Ending Friday, March 15, 2024



March 13, 2024 – DCF Surface after ROM removal.



March 13, 2024 – Removal of ROM material up 2:1 slope.

Newmont Mining Corporation
Cripple Creek & Victor Gold Mine
Liner Repair CQA
NewFields Job No. 475.0106.068
Week Ending Friday, March 15, 2024



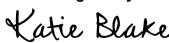


March 13, 2024 – DCF Surface on slope after ROM removal.

Newmont Mining Corporation
Cripple Creek & Victor Gold Mine
Liner Repair CQA
NewFields Job No. 475.0106.068
Week Ending Friday, March 15, 2024

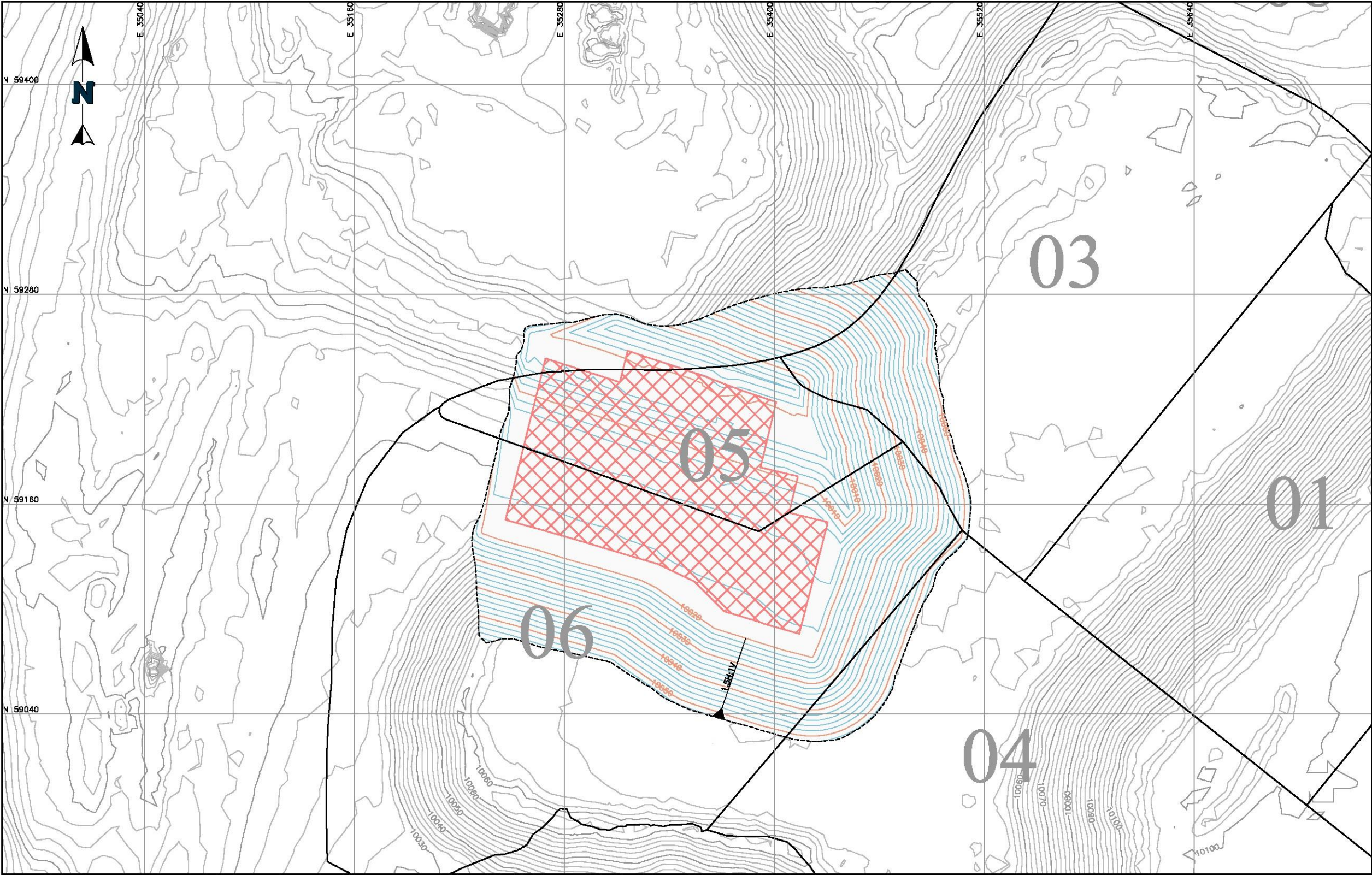


Report Review and Approval:

Role	Name	Signature
CQA Monitor/Report Prepared By	Tyler Wendlandt	
Technical Services Manager or Designee:	Kathy Steele	
S&ER Manager or Designee:	Katie Blake	<div><div>DocuSigned by:</div><div>5A3D013B629844B...</div></div>

Attachments:

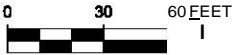
Figure 1 – VLF2 Phase 3A.1 Repair Limits of Excavation with Cell Boundaries



LEGEND:

- 2/20/2024 GROUND CONTOURS
- PROPOSED EXCAVATION
- LIMITS OF GEOMEMBRANE LINER REPLACEMENT
- APPROXIMATE ORE CELL BOUNDARY

DRAFT



N

ew

Field

s

CLIENT

CRIPPLE CREEK & VICTOR

GOLD MINING COMPANY

PROJECT		VLF2 PHASE 3A.1 REP.AIR	
TITLE		LIMITS OF EXCAVATION	
		FILENAME	106.065.001F
		FIGURE NO.	2
		REVISION	0



FW: Weekly Progress Report - VLF2 Phase 3A Liner Remediation - week ending 3-15

Johnna Gonzalez <Johnna.Gonzalez@newmont.com>

Tue, Mar 19, 2024 at 4:15 PM

To: "Russell - DNR, Elliott" <elliott.russell@state.co.us>

Cc: "Amy.Eschberger@state.co.us" <amy.eschberger@state.co.us>, Katie Blake <Katie.Blake@newmont.com>, Kathy Steele <Kathy.Steele@newmont.com>, Norma Townley <Norma.Townley2@newmont.com>

Hi Elliott,

Please see the attached weekly progress report for the VLF2 Phase 3A liner remediation. If you have any questions, please let me know.

Thanks,



Johnna Gonzalez

ENVIRONMENTAL

100 N 3rd Street
PO Box 191

Victor, CO 80860

M 719.313.0447

NEWMONT.COM



VLF_2_Phase__3_Liner_Remediation_Project_week_ending_3-15.docx.pdf
2776K