

2.0 REGULAR (112) OPERATION RECLAMATION PERMIT APPLICATION EXHIBITS

2.1 Exhibit A: Legal Description of Permit Boundary and Affected Area Boundary (Rule 6.4.1)

The proposed permit/affected area is land owned by Holcim. The permit boundary and affected area boundary include three parcels (Figure 2.1-1). The Material Transport and Access Corridor (MTAC) adjoins the BCQ to RCQ. RCQ is the limestone and sandstone resource that will be mined and reclaimed. The total proposed permit area will be increased by 4076.08 acres for a total permit acreage of 5615.34. The Hwy 96 Access is a service road easement from Hwy 96 to RCQ for employee use, emergency responders and mobilizing equipment to RCQ during initial development. Holcim is the owner of both surface and mineral rights in MTAC and RCQ. (Exhibit O).

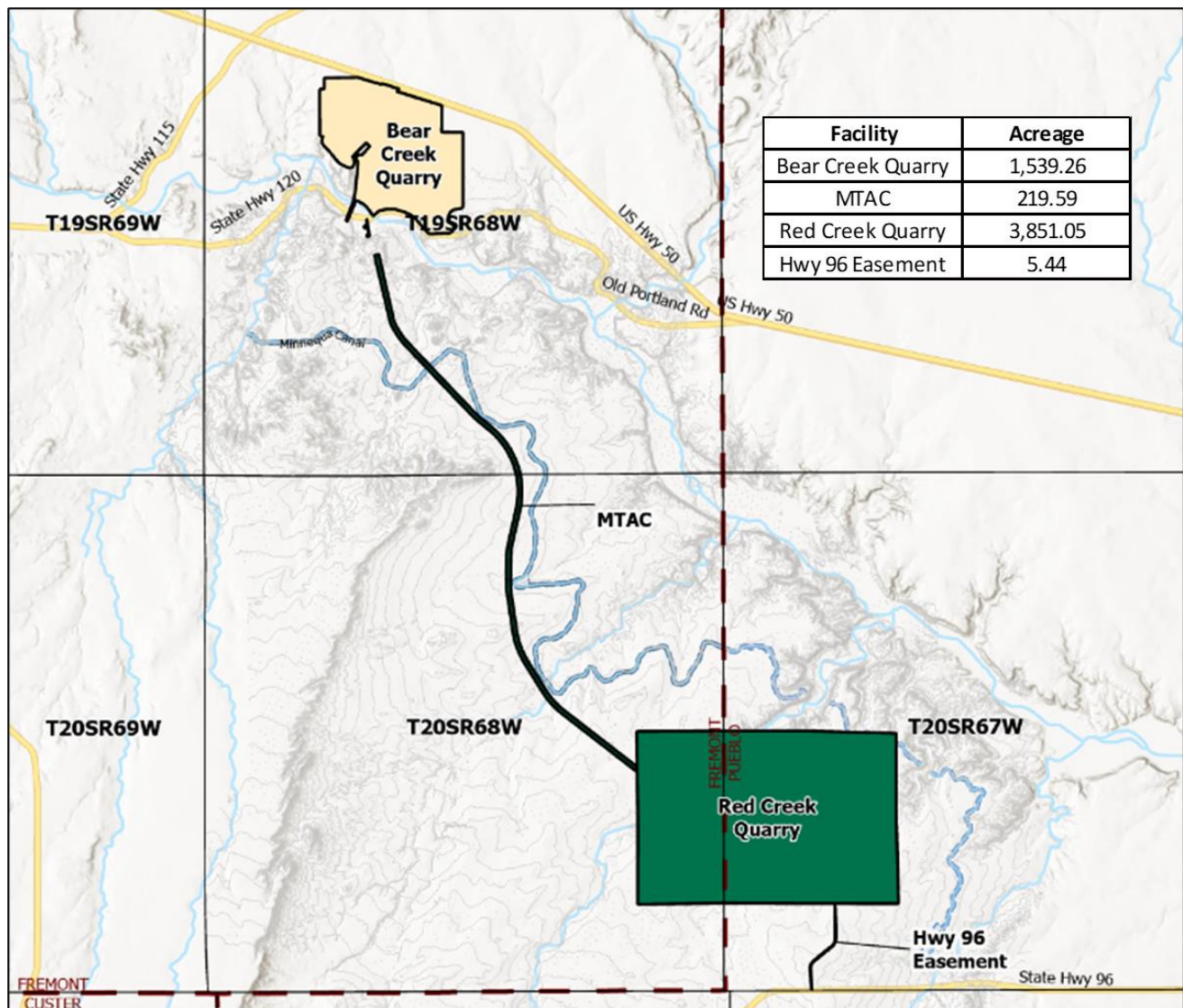


Figure 2.1-1 Parcel Configuration and Use

Legal Description of Bear Creek Quarry Parcel:

(For Bonding purposes, not the result of a Land Survey as defined by Colorado Law)

A Parcel of land located in Sections 8, 9, 16 and 17, Township 19 South, Range 68 West of the Sixth Principal Meridian, County of Fremont, State of Colorado, more particularly described as follows:

Beginning at a point approximately 100 feet South and 120 feet west of the Northeast corner of said Section 16, from which the Southwest corner of Section 20, Township 19 South, Range 68 West of the Sixth Principal Meridian bears S44° 43' 37"W a distance of 14861.66 feet, and considering the North line of the Southeast Quarter of said Section 20 to bear N89° 09' 19"E, with all bearings herein relative thereto;

Thence S00° 17' 23"E, parallel with the East line of said Section 16, a distance of 2350.90 feet;
Thence S00° 18' 26"E, parallel with the East line of said Section 16, a distance of 2217.00 feet;
Thence southerly, and parallel with the continuation of said L Street the following Twenty-Seven (27) courses:

1. S42° 31' 24"W a distance of 64.50 feet;
2. S72° 09' 27"W a distance of 245.67 feet;
3. S79° 38' 18"W a distance of 330.40 feet;
4. S53° 32' 42"W a distance of 113.34 feet;
5. S50° 32' 22"W a distance of 87.27 feet;
6. S39° 18' 11"W a distance of 56.31 feet;
7. S35° 13' 49"W a distance of 82.45 feet;
8. S21° 48' 49"W a distance of 42.67 feet;
9. S10° 37' 27"W a distance of 128.99 feet;
10. S02° 29' 28"W a distance of 91.20 feet;
11. S15° 25' 49"E a distance of 119.19 feet;
12. S26° 34' 33"E a distance of 88.59 feet;
13. S33° 02' 09"E a distance of 94.51 feet;
14. S32° 44' 53"E a distance of 65.94 feet;
15. S51° 43' 25"E a distance of 95.93 feet;
16. S26° 34' 29"E a distance of 44.30 feet;
17. S34° 31' 16"E a distance of 76.93 feet;
18. S36° 52' 57"E a distance of 59.44 feet;
19. S11° 18' 58"E a distance of 60.60 feet;
20. S05° 42' 47"W a distance of 39.81 feet;
21. S09° 27' 47"W a distance of 24.10 feet;
22. S25° 01' 42"W a distance of 65.58 feet;
23. S41° 12' 02"W a distance of 42.12 feet;
24. S36° 15' 59"W a distance of 73.70 feet;
25. S37° 35' 02"W a distance of 64.99 feet;
26. S60° 45' 46"W a distance of 113.56 feet;
27. S80° 13' 21"W a distance of 116.64 feet;

Thence westerly, parallel with the northerly Right-of-Way line of Fremont County Road No. 120 the following Twenty-Seven (27) courses:

1. N89° 07' 57"W a distance of 261.63 feet;
2. S88° 53' 55"W a distance of 206.15 feet;
3. S86° 29' 53"W a distance of 194.58 feet;
4. S85° 36' 08"W a distance of 103.36 feet;

5. S75° 28' 24"W a distance of 110.55 feet;
6. S90° 00' 00"W a distance of 87.20 feet;
7. N88° 05' 33"W a distance of 118.98 feet;
8. N87° 52' 43"W a distance of 107.09 feet;
9. N45° 00' 57"W a distance of 89.66 feet;
10. N40° 17' 16"W a distance of 180.66 feet;
11. N43° 46' 07"W a distance of 257.84 feet;
12. N42° 56' 37"W a distance of 232.72 feet;
13. N38° 40' 23"W a distance of 228.35 feet;
14. N39° 58' 17"W a distance of 191.27 feet;
15. N51° 10' 37"W a distance of 307.13 feet;
16. N56° 19' 21"W a distance of 142.89 feet;
17. N63° 26' 47"W a distance of 248.14 feet;
18. N72° 28' 56"W a distance of 236.91 feet;
19. N70° 06' 20"W a distance of 244.48 feet;
20. N75° 35' 09"W a distance of 286.47 feet;
21. S89° 28' 02"W a distance of 426.07 feet;
22. S85° 55' 00"W a distance of 166.89 feet;
23. S79° 49' 47"W a distance of 157.05 feet;
24. S78° 24' 44"W a distance of 157.80 feet;
25. S64° 14' 31"W a distance of 127.63 feet;
26. S41° 26' 02"W a distance of 95.12 feet;
27. S47° 53' 13"W a distance of 324.93 feet;

Thence northwesterly and parallel with the northern top of bank of the Arkansas River the following Six (6) courses:

1. N39° 13' 17"W a distance of 194.32 feet;
2. N30° 37' 51"W a distance of 225.60 feet;
3. N40° 53' 42"W a distance of 351.15 feet;
4. N53° 08' 38"W a distance of 217.96 feet;
5. N61° 01' 55"W a distance of 294.48 feet;
6. N70° 18' 36"W a distance of 340.99 feet;

Thence N11° 50' 52"E a distance of 250.97 feet;
 Thence N12° 25' 54"E a distance of 239.35 feet;
 Thence N03° 16' 21"E a distance of 138.89 feet;
 Thence N05° 42' 48"E a distance of 199.07 feet;
 Thence N06° 35' 05"E a distance of 207.38 feet;
 Thence N04° 32' 23"E a distance of 250.37 feet;
 Thence N05° 29' 42"E a distance of 206.96 feet;
 Thence N04° 38' 18"E a distance of 147.06 feet;
 Thence N05° 39' 07"E a distance of 482.92 feet;
 Thence N03° 49' 00"E a distance of 178.67 feet;
 Thence N22° 37' 50"W a distance of 103.01 feet;
 Thence N58° 24' 16"W a distance of 120.99 feet;
 Thence N35° 13' 48"W a distance of 82.45 feet;
 Thence N39° 34' 22"E a distance of 118.21 feet;
 Thence N42° 53' 33"E a distance of 227.12 feet;
 Thence S75° 39' 26"E a distance of 175.92 feet;
 Thence N42° 36' 29"E a distance of 333.73 feet;
 Thence N42° 41' 32"E a distance of 415.03 feet;
 Thence N45° 37' 49"W a distance of 307.16 feet;
 Thence S44° 22' 12"W a distance of 178.55 feet;

Thence S42° 53' 34"W a distance of 302.82 feet;
 Thence S43° 37' 00"W a distance of 344.75 feet;
 Thence S46° 20' 46"W a distance of 361.56 feet;
 Thence S23° 23' 31"E a distance of 263.31 feet;
 Thence S00° 00' 01"W a distance of 126.78 feet;
 Thence S09° 43' 55"W a distance of 140.68 feet;
 Thence S25° 01' 41"W a distance of 131.17 feet;
 Thence S60° 16' 00"W a distance of 159.76 feet;
 Thence N82° 09' 00"W a distance of 116.03 feet;
 Thence N69° 44' 35"W a distance of 274.62 feet;
 Thence N61° 48' 35"W a distance of 310.30 feet;
 Thence N54° 06' 15"W a distance of 141.89 feet;
 Thence N41° 26' 14"W a distance of 269.51 feet;
 Thence N38° 00' 43"W a distance of 321.81 feet;
 Thence N39° 55' 17"W a distance of 284.11 feet;
 Thence N46° 56' 40"W a distance of 249.53 feet;
 Thence N43° 37' 00"W a distance of 229.83 feet;
 Thence N29° 38' 08"W a distance of 232.46 feet;
 Thence N01° 58' 34"E a distance of 114.96 feet;
 Thence N11° 46' 25"E a distance of 194.25 feet;
 Thence N05° 42' 54"E a distance of 79.63 feet;
 Thence N79° 55' 29"W a distance of 181.16 feet;
 Thence N03° 15' 56"W a distance of 200.08 feet;
 Thence N00° 31' 15"W a distance of 2670.62 feet;
 Thence N89° 13' 25"E a distance of 292.53 feet;
 Thence N00° 40' 42"W a distance of 669.58 feet;
 Thence N88° 46' 40"E a distance of 2043.06 feet;
 Thence southeasterly and parallel with the southerly Right-of-Way line of Colorado Highway 50 the following Nine (9) courses:
 1. S73° 54' 50"E a distance of 1458.40 feet;
 2. N81° 55' 02"E a distance of 144.16 feet;
 3. S81° 32' 53"E a distance of 89.64 feet;
 4. S70° 45' 07"E a distance of 537.15 feet;
 5. S74° 36' 03"E a distance of 245.14 feet;
 6. S71° 33' 43"E a distance of 187.47 feet;
 7. S53° 28' 01"W a distance of 110.28 feet;
 8. S16° 58' 44"W a distance of 94.34 feet;
 9. S73° 01' 12"E a distance of 2864.96 feet;
 Thence S00° 13' 29"W a distance of 1641.50 feet;
 Thence S89° 39' 14"E a distance of 1322.61 feet to the **Point of Beginning**;

Containing 1,326.89 acres of land more or less.

Legal Description of Bear Creek Quarry River Crossing:

South, Range 68 West of the Sixth Principal Meridian, County of Fremont, State of Colorado, more particularly described as follows:

Commencing at a point on the North line of the Southeast Quarter of said Section 20, and considering said North line to bear N89° 09' 19"E, with all bearings herein relative thereto, and from which the Southwest corner of said Section 20 bears S62° 00' 36" West a distance of 5805.37 feet;
 Thence N20° 04' 06"W a distance of 1497.34 feet;
 Thence N52° 24' 41"W a distance of 1545.14 feet to the **Point of Beginning**;

Thence N64° 23' 28"W a distance of 105.17 feet;
 Thence N21° 11' 25"E a distance of 1369.76 feet;
 Thence S70° 18' 36"E a distance of 118.77 feet;
 Thence S21° 45' 58"W a distance of 1381.05 feet;

Containing 3.53 acres of land, more or less.

Legal Description of Bear Creek Quarry Plant Area:

A Parcel of land located in the Northeast Quarter of Section 20, Township 19 South, Range 68 West of the Sixth Principal Meridian, County of Fremont, State of Colorado, more particularly described as follows:

Commencing at a point on the North line of the Southeast Quarter of said Section 20, and considering said North line to bear N89° 09' 19"E, with all bearings herein relative thereto, and from which the Southwest corner of said Section 20 bears S62° 00' 36" West a distance of 5805.37 feet;
 Thence N20° 04' 06"W a distance of 1497.34 feet to the **Point of Beginning**;
 Thence N21° 45' 18"W a distance of 102.31 feet;
 Thence N68° 26' 23"E a distance of 77.10 feet;
 Thence S21° 33' 36"E a distance of 77.20 feet;
 Thence N66° 45' 25"E a distance of 54.37 feet;
 Thence N09° 31' 10"W a distance of 661.21 feet;
 Thence S68° 32' 02"W a distance of 40.19 feet;
 Thence S68° 39' 22"W a distance of 49.55 feet;
 Thence S68° 20' 01"W a distance of 64.92 feet;
 Thence S64° 07' 16"W a distance of 7.38 feet;
 Thence S64° 35' 41"W a distance of 5.76 feet;
 Thence S57° 54' 07"W a distance of 3.88 feet;
 Thence S41° 28' 39"W a distance of 2.79 feet;
 Thence S17° 34' 57"E a distance of 13.50 feet;
 Thence S16° 33' 21"E a distance of 47.78 feet;
 Thence N69° 32' 48"E a distance of 28.08 feet;
 Thence S20° 26' 52"E a distance of 71.42 feet;
 Thence S69° 33' 07"W a distance of 77.10 feet;
 Thence N20° 26' 55"W a distance of 71.42 feet;
 Thence N69° 32' 40"E a distance of 26.13 feet;
 Thence N16° 33' 19"W a distance of 49.13 feet;
 Thence N17° 34' 58"W a distance of 12.80 feet;
 Thence N03° 34' 47"W a distance of 9.57 feet;
 Thence N13° 49' 26"E a distance of 10.22 feet;
 Thence N41° 27' 43"E a distance of 10.11 feet;
 Thence N57° 52' 53"E a distance of 8.52 feet;
 Thence N64° 36' 08"E a distance of 7.00 feet;

Thence N64° 06' 17"E a distance of 8.12 feet;
 Thence N68° 20' 09"E a distance of 65.83 feet;
 Thence N68° 39' 21"E a distance of 49.58 feet;
 Thence N68° 32' 13"E a distance of 45.65 feet;
 Thence N08° 01' 09"W a distance of 2.94 feet;
 Thence N09° 08' 18"W a distance of 37.30 feet;
 Thence N09° 17' 45"W a distance of 207.02 feet;
 Thence N05° 52' 28"W a distance of 13.71 feet;
 Thence N00° 54' 18"E a distance of 12.84 feet;
 Thence N05° 34' 36"E a distance of 18.33 feet;
 Thence N10° 38' 14"E a distance of 24.81 feet;
 Thence N82° 31' 46"E a distance of 22.80 feet;
 Thence S09° 28' 03"W a distance of 22.92 feet;
 Thence S05° 34' 28"W a distance of 24.39 feet;
 Thence S00° 54' 56"W a distance of 10.56 feet;
 Thence S05° 52' 53"E a distance of 11.67 feet;
 Thence S09° 17' 46"E a distance of 206.37 feet;
 Thence S09° 08' 11"E a distance of 37.56 feet;
 Thence S08° 00' 31"E a distance of 35.93 feet;
 Thence S09° 35' 48"E a distance of 14.92 feet;
 Thence S09° 32' 18"E a distance of 652.90 feet;
 Thence S62° 12' 39"W a distance of 17.87 feet;
 Thence S66° 45' 25"W a distance of 54.25 feet;
 Thence S66° 45' 15"W a distance of 78.05 feet to the **Point of Beginning**;

Containing 1.00 acres of land, more or less.

Legal Description of MTAC:

A Parcel of land located in parts of Sections 20, 21, 28 and 29, Township 19 South, Range 68 West of the Sixth Principal Meridian, County of Fremont, State of Colorado, more particularly described as follows:

Beginning at a point on the North line of the Southeast Quarter of said Section 20, and considering said North line to bear N89° 09' 19"E, with all bearings herein relative thereto, and from which the Southwest corner of said Section 20 bears S62° 00' 36" West a distance of 5805.37 feet;

Thence N13° 22' 46"W a distance of 284.95 feet;

Thence N76° 37' 14"E a distance of 273.19 feet;

Thence S13° 22' 46"E a distance of 346.36 feet to said North line of the Southeast Quarter of said Section 20;

Thence continuing S13° 22' 46"E a distance of 3928.22 feet to a point from which the Northwest Corner of said Section 28 bears N40° 59' 05"W a distance of 1538.33 feet;

Thence N89° 41' 57"W a distance of 281.17 feet;

Thence N13° 22' 46"W a distance of 3923.14 feet to the Point of Beginning,

And A strip of land located within Section 28, the Northeast one-quarter of the Northeast one-quarter of Section 33, Section 34, T19S, R68W of the 6th P.M. and Section 3, Section 10, the Southwest one-quarter of Section 14, the East one-half of Section 15 and the North one-half of Section 23, T20S, R68W of the 6th P.M., County of Fremont, State of Colorado and being more particularly described as lying 125.00 feet on each side of the following described centerline.

Beginning at point within said Section 28 from which the Northwest corner of Section 28 bears N36°48'18"W, a distance of 1449.43 feet;
 thence S27°05'30"E, a distance of 113.81 feet to a point at the beginning of a curve to the left, said curve having a radius of 5682.00 feet, a central angle of 16°50'42" and a chord bearing of S 35°30'51"E;
 thence along said curve, Southeasterly an arc distance of 1670.52 feet;
 thence S 43°56'12"E, a distance of 5704.94 feet to a point at the beginning of a curve to the left, said curve having a radius of 3875.50 feet; a central angle of 07°22'29" and a chord bearing of S 47°37'27"E;
 thence along said curve, Southeasterly an arc distance of 498.84 feet;
 thence S 51°18'41"E, a distance of 850.39 feet to a point at the beginning of a curve to the right, said curve having a radius of 5017.00 feet; a central angle of 61°48'57" and a chord bearing of S20°24'13"E;
 thence along said curve Southeasterly an arc distance of 5412.78 feet to a point at the beginning of a curve to the right, said curve having a radius of 12013.00 feet, a central angle of 02°55'07" and a chord bearing of S 11°57'49"W; thence along said curve Southwesterly an arc distance of 611.94 feet;
 thence S 13°25'22"W, a distance of 1182.22 feet to a point at the beginning of a curve to the left, said curve having a radius of 7160.00 feet; a central angle of 13°07'12" and a chord bearing of S06°51'46"W;
 thence along said curve Southerly an arc distance of 1639.55 feet;
 thence S 00°18'10"W, a distance of 1167.38 feet, to a point at the beginning of a curve to the left, said curve having a radius of 4943.00 feet; a central angle of 08°58'53" and a chord bearing of S 04°11'16"E;
 thence along said curve Southerly an arc distance of 774.84 feet;
 thence S 08°40'43"E, a distance of 2273.99 feet to a point at the beginning of a curve to the left, said curve having a radius of 5030.00 feet; a central angle of 23°12'03" and a chord bearing of S20°16'44"E;
 thence along said curve Southeasterly an arc distance of 2036.81 feet;
 thence S 31°52'46"E, a distance of 2080.29 feet to a point at the beginning of a curve to the left, said curve having a radius of 5100.00 feet; a central angle of 20°42'32" and a chord bearing of S 42°14'02"E;
 thence along said curve Southeasterly an arc distance of 1843.33 feet;
 thence S 52°35'18"E, a distance of 5789.81 feet to a point on the East line of the Northeast one- quarter of Section 23, T20S, R68W, 6th P.M., from which point the Northeast corner of said Section 23 bears N00°05'49"W, a distance 2341.06 feet, said point being the Point of Terminus of this description.
 Containing 219.60 acres of land, more or less.

Legal Description of RCQ:

Section 19, Section 20, Section 29, and Section 30, T20S, R67W of the 6th P.M., County of Pueblo, State of Colorado, together with Section 24 and Section 25, T20S, R68W of the 6th P.M., County of Fremont, State of Colorado.

Said parcel contains 3851.05 acres, more or less.

Legal Description of Hwy 96 Access:

A strip of land, 40 feet wide, located in the West Half of Section 32 and the Southeast Quarter of Section 31, Township 20 South, Range 67 West of the Sixth Principal Meridian, County of Pueblo, State of Colorado, with the centerline of said strip described as follows:

Beginning at a point in the center of an existing roadway, on the North line of said West Half of Section 32, approximately 1,554 feet Easterly of the Northwest Corner of said Section 32 and having a Colorado State

Plane Central Zone Grid Coordinate of North 1,160,618.5 and East 3,167,443.1 US Survey Feet, more or less;

Thence along said roadway centerline the following five (5) courses:

1. S0° 32' 19"E, with all rid bearings herein being based on Colorado State Plane Central Zone, a distance of 2049.89 feet to a point of curve to the right;
2. 585.69 feet along the arc of said curve, having a radius of 653.31 feet, a central angle of 51°21'54", and a chord that bears S19° 18' 17"W a distance of 566.27 feet;
3. S50° 32' 56"W a distance of 1370.73 feet to a point of curve to the left;
4. 516.61 feet along the arc of said curve, having a radius of 742.77 feet, a central angle of 39°51'02", and a chord that bears S35°18' 02"W a distance of 506.26 feet;
5. S02° 59' 01"E a distance of 1399.30 feet more or less, to the Point of Terminus at the northerly right-of-way line of Colorado Highway 96 and having a Colorado State Plane Central Zone Grid Coordinate of North 1,155,352.8 and East 3,165,997.0 US Survey Feet, more or less,

Containing 236,880 sq ft or 5.438 acres of land, more or less.

2.1.1 Mine Entrance Coordinates

The primary entrance will be the Holcim Plant entrance aka BCQ entrance on Hwy 120 with coordinates of 38°23'19.41"N, 105° 1'13.58"W. Employees and contractors will log in at the plant office and travel to RCQ in Holcim multi-passenger vans and trucks. A secondary access for emergency response providers and vendor access will be south to Highway 96 with coordinates of 38°15'30.47"N, 104°55'19.01"W.