

Environment, Inc.

LARRY E. O'BRIAN
FOUNDER

STEVAN L. O'BRIAN
PRESIDENT

7985 VANCE DRIVE, SUITE 205A
ARVADA, COLORADO 80003
303-423-7297
FAX 303-423-7599

February 16, 2024

Ms. Amber Gibson
Division of Reclamation, Mining & Safety
1313 Sherman St., Suite 215
Denver, CO 80215

Dear Amber,

RE: Tamrock Gravel, LLC.
Shot Rock Pit - M-2012-023
Corrective action Boundary Markers

On behalf of my client Tamrock Gravel LLC, I am providing the following information to address the December 8, 2023 Inspection report Signs & Marker inspection topic.

Your inspection report states that *"the affected area boundary markers are missing or incorrectly placed"*. For the first time in about 3 weeks due to weather, Mr. Tamburelli's was able to access the site and spent most of the day checking the permit corner locations along the southern permit line. He found only one missing corner post and placed white pipe over each marker and took pictures. He was able to find them using the locations shown on the attached **Corners Map**. In the approved permit the Permit Boundary and Affected Lands are one and the same and the setbacks were explained to be mining setbacks, not potentially undisturbed areas.

It is based on data collected when the original layout of the mine was done in 2012, where I recorded the Latitude/Longitude coordinates for each corner when we set them. I labeled the corners you were able to find at the inspection based on the letters on your **Map 1** (page 18 of 19) and then started using numbers to designate the ones Brent found. The corners you found are shown as black text and the ones you did not find are red. Corner 1 was the only missing marker that needed to be reset.

The attached Photo pages show each of the 7 unidentified corners and Corner 4 which is your "F". It appears from what

Brent found when locating the corners and photos that the western red area shown on Map 1, from corner 6 to 7, is all in the permit area. The eastern area is greatly reduced or may well be in the affected land/permit boundary as well. I believe this is due to the inherent inaccuracies of Google Earth. The data you collected at the inspection may shed some light on that area and may become an important part of the scheduled hearing.

If you have more questions or need more information please call me at (303) 423-7297.

Sincerely,



Stevan L. O'Brian
Environment, Inc.

cc Tamrock Gravel, LLC
Amber Gibson e-mail
MLRB Board - Camille Molar e-mail
file

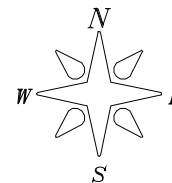
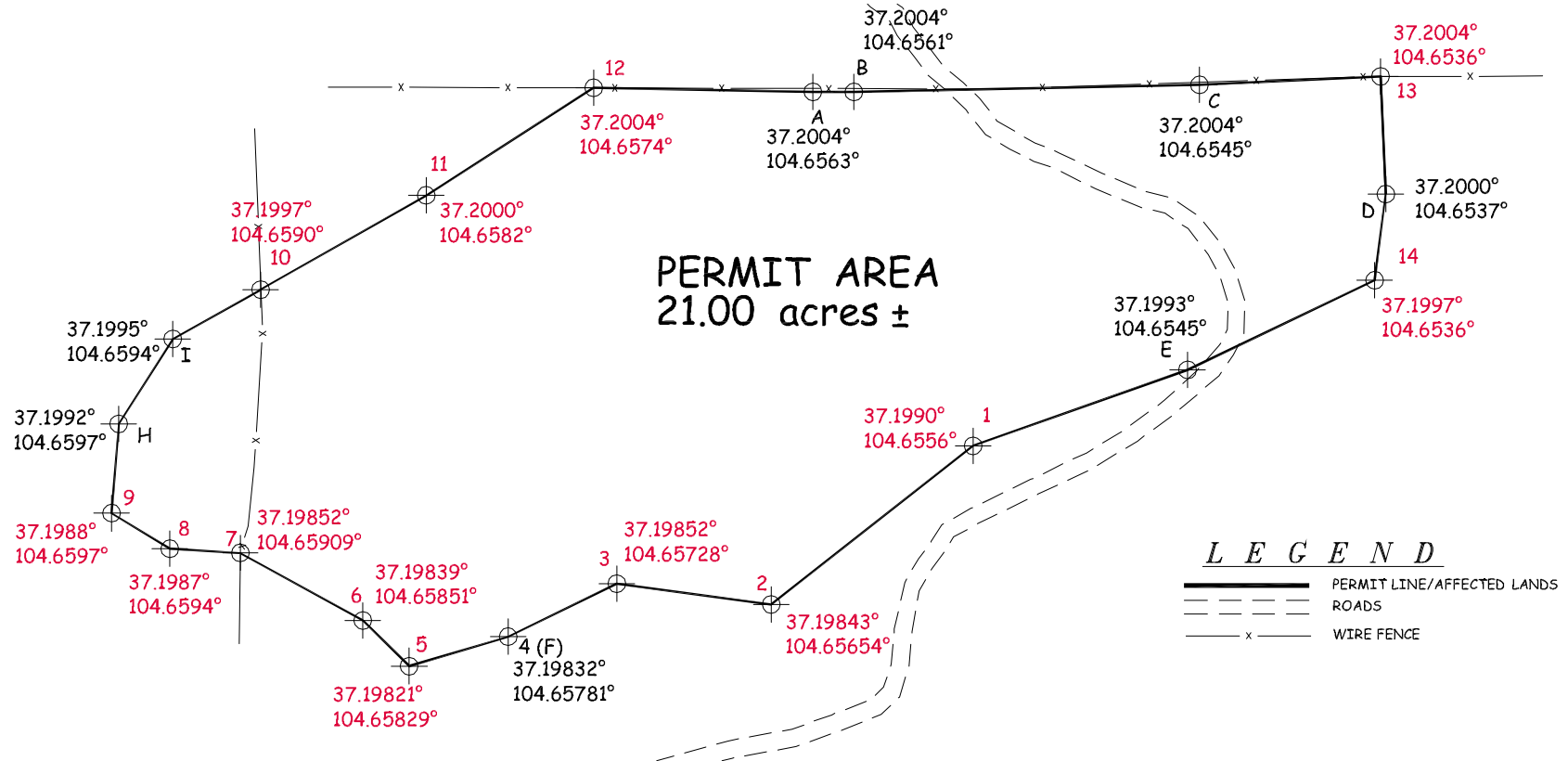
enclosures

The black numbers and letters
are DRMS located points -
11-28-23.

The red numbers are ground
varuified. 2-13-24.

Coordinate source. Environment,
Inc. files from original layout in
2o12

TAMROCK GRAVEL COMPANY CORNER LOCATIONS SHOT ROCK PIT - M-2012-023



DATE: Feb 14, 2024 - 16:20:15



SCALE 1"=250'

PREPARED BY: *ENVIRONMENT, INC.*
7985 VANCE DR., # 205A
ARVADA, CO 80003
(303) 423-7297

PART OF THE NE/4SE/4 & NW/4SE/4, SECTION 3,
TOWNSHIP 33 SOUTH, RANGE 65 WEST, 6TH P.M.,
LAS ANIMAS COUNTY, COLORADO

Photo Date 2/13/2024



Corner 1 - looking from mine floor to marker



Corner 1 - looking east to Corner E

Photo Date 2/13/2024



Corner 1 - looking east along slope towards Corner E



Corner 1 - Looking east from behind marker along line to Corner E

Photo Date 2/13/2024



Corner 1 - Looking north into the mine area.

Photo Date 2/13/2024



Corner2 - looking east towards Point 1. Permit area on left.



Corner 2 - looking up slope into permit area

Photo Date 2/13/2024

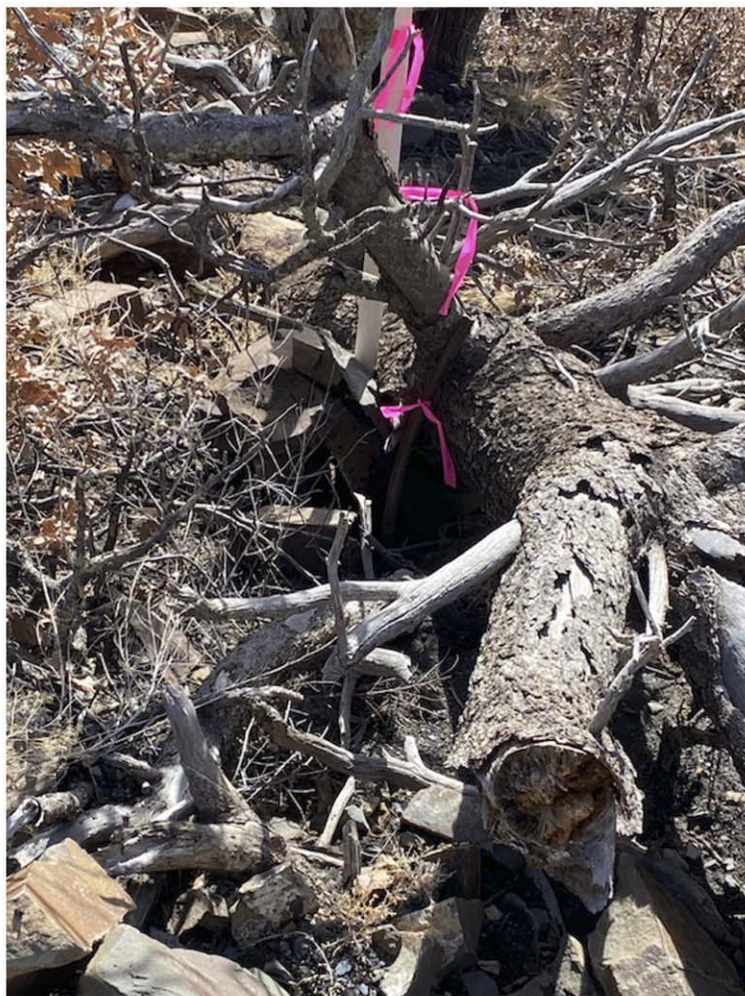


Corner 3 - Looking south from permit area.

Photo Date 2/13/2024



Corner 3 - looking from outside permit area



Corner 3 - in tree

Photo Date 2/13/2024



Corner 4 (F) - looking into the permit area



Corner 4(F) -

Photo Date 2/13/2024



Corner 4 (F) - looking from permit area south to marker

Photo Date 2/13/2024



Corner 5 - Looking from down slope of marker into permit area.



Corner 5 - Another view

Photo Date 2/13/2024



Corner 6 - Right side is permit area. no disturbance outside permt
line



Corner 6 - looking west towards Corner 7. note line market and no
disturbance outside permit area

Photo Date 2/13/2024



Corner 6 - looking west to Corner 7. Note line markers



Corner 6 - Right side is permit area. no disturbance outside
permt line

Photo Date 2/13/2024



Corner 6 - looking south from permit area to marker



Corner 6 - looking north not reclaimed slope.

Photo Date 2/13/2024



Corner 7 - looking from down slope of marker into permit area.
Saw is sitting on bottom line of graded slope



Mid point Corner 6 and 7 - looking north into mine.

Photo Date 2/13/2024



Corner 7 - looking east to Corner 6. note line markers and no disturbance on mine side (left) of line