



STATE OF  
COLORADO

Simmons - DNR, Leigh <leigh.simmons@state.co.us>

---

## C1981022, Elk Creek Mine, February Inspection Report (Aerial)

---

**Simmons - DNR, Leigh** <leigh.simmons@state.co.us>

Thu, Feb 15, 2024 at 5:03 PM

To: Doug Smith <Doug.Smith@oxbow.com>

Attached

Leigh Simmons  
Environmental Protection Specialist



**COLORADO**  
Division of Reclamation,  
Mining and Safety  
Department of Natural Resources

P 303.866.3567 x 8121 | C 720.220.1180 | F 303.832.8106

1313 Sherman Street, Room 215, Denver, CO 80203

[leigh.simmons@state.co.us](mailto:leigh.simmons@state.co.us) | <https://drms.colorado.gov>



**INSP-REPORTC\_C1981022\_LDS\_02152024040909.pdf**

10806K



## COLORADO


Division of Reclamation,  
Mining and Safety

Department of Natural Resources

### PERMIT INFORMATION

<b>Permit Number:</b> C-1981-022 <b>Mine Name:</b> Elk Creek Mine <b>Operator:</b> Oxbow Mining, LLC <b>Operator Address:</b> Mr Doug Smith 3737 Hwy 133 P. O. Box 535 Somerset, CO 81434	<b>County:</b> Delta, Gunnison <b>Operation Type:</b> Underground <b>Permit Status:</b> Active <b>Ownership:</b> Private
	<b>Operator Representative Present:</b>  None
<b>Operator Representative Signature: (Field Issuance Only)</b>   	

### INSPECTION INFORMATION

<b>Inspection Start Date:</b> February 13, 2024 <b>Inspection Start Time:</b> 12:00 <b>Inspection End Date:</b> <b>Inspection End Time:</b>		<b>Inspection Type:</b> Aerial Inspection <b>Inspection Reason:</b> Normal I&E Program <b>Weather:</b> Clear	
<b>Joint Inspection Agency:</b>  None		<b>Joint Inspection Contacts:</b>	
<b>Post Inspection Agency:</b>  None		<b>Post Inspection Contacts:</b>	
<b>Inspector(s):</b>  Leigh Simmons  Brock Bowles	<b>Inspector's Signature:</b>    <b>Signature Date:</b>  February 15, 2024		

**Inspection Topic Summary**

NOTE: Y=Inspected N=Not Inspected R=Comments Noted V=Violation Issued NA=Not Applicable

N - Air Resource Protection

N - Roads

N - Availability of Records

N - Reclamation Success

N - Backfill &amp; Grading

N - Revegetation

N - Excess Spoil and Dev. Waste

N - Subsidence

N - Explosives

N - Slides and Other Damage

N - Fish &amp; Wildlife

R - Support Facilities On-site

N - Hydrologic Balance

N - Signs and Markers

R - Gen. Compliance With Mine Plan

N - Support Facilities Not On-site

N - Other

N - Special Categories Of Mining

N - Processing Waste

N - Topsoil

**COMMENTS**

This was an aerial inspection. The site was flown and photographed by Brock Bowles. Pictures were inspected by Leigh Simmons.

**GENERAL MINE PLAN COMPLIANCE:**

South facing slopes were clear, but otherwise the site was largely covered with snow. No sign of slides, damage or other instability was visible. Repairs to the lower section of the reclaimed Elk Creek channel were clearly visible.

**SUPPORT FACILITIES - Rule 4.04:**

Facilities appeared to be in good order. No further work had been done to remove the substation from the upper pad.

**DOCUMENTS RECEIVED**

N/A

**OTHER (SPECIFY)**

N/A

**ENFORCEMENT ACTIONS/COMPLIANCE**

No enforcement actions were initiated as a result of this inspection, nor are any pending.

Number of Partial Inspection this Fiscal Year: 6

Number of Complete Inspections this Fiscal Year: 2





*Figure 1: Main facilities from the south*

Number of Partial Inspection this Fiscal Year: 6

Number of Complete Inspections this Fiscal Year: 2





Figure 2: Office and shop, with Pond B in the lower left, and part of the reclaimed East Yard Fill in the upper right

Number of Partial Inspection this Fiscal Year: 6

Number of Complete Inspections this Fiscal Year: 2





*Figure 3: Cemetery, water treatment plant, substation and bath house*

Number of Partial Inspection this Fiscal Year: 6

Number of Complete Inspections this Fiscal Year: 2





Figure 4: West Valley Fill and Pond C. The water pipeline installed by Gunnison Energy is visible in the upper left.

Number of Partial Inspection this Fiscal Year: 6

Number of Complete Inspections this Fiscal Year: 2





*Figure 5: II West Valley Fill and Pond E*

Number of Partial Inspection this Fiscal Year: 6

Number of Complete Inspections this Fiscal Year: 2





*Figure 6: Lower section of reclaimed Elk Creek channel*

Number of Partial Inspection this Fiscal Year: 6

Number of Complete Inspections this Fiscal Year: 2





Figure 7: Upper section of reclaimed Elk Creek channel

Number of Partial Inspection this Fiscal Year: 6  
Number of Complete Inspections this Fiscal Year: 2





Figure 8: Upper Elk Creek facilities pad

Number of Partial Inspection this Fiscal Year: 6  
Number of Complete Inspections this Fiscal Year: 2





Figure 9: Upper Elk Creek facilities pad, from north

Number of Partial Inspection this Fiscal Year: 6  
Number of Complete Inspections this Fiscal Year: 2





Figure 10: Upper section of reclaimed Elk Creek channel, from north

Number of Partial Inspection this Fiscal Year: 6  
Number of Complete Inspections this Fiscal Year: 2





*Figure 11: Middle Section of Elk Creek culvert. Powerline road on right, with vehicle tracks visible.*

Number of Partial Inspection this Fiscal Year: 6

Number of Complete Inspections this Fiscal Year: 2



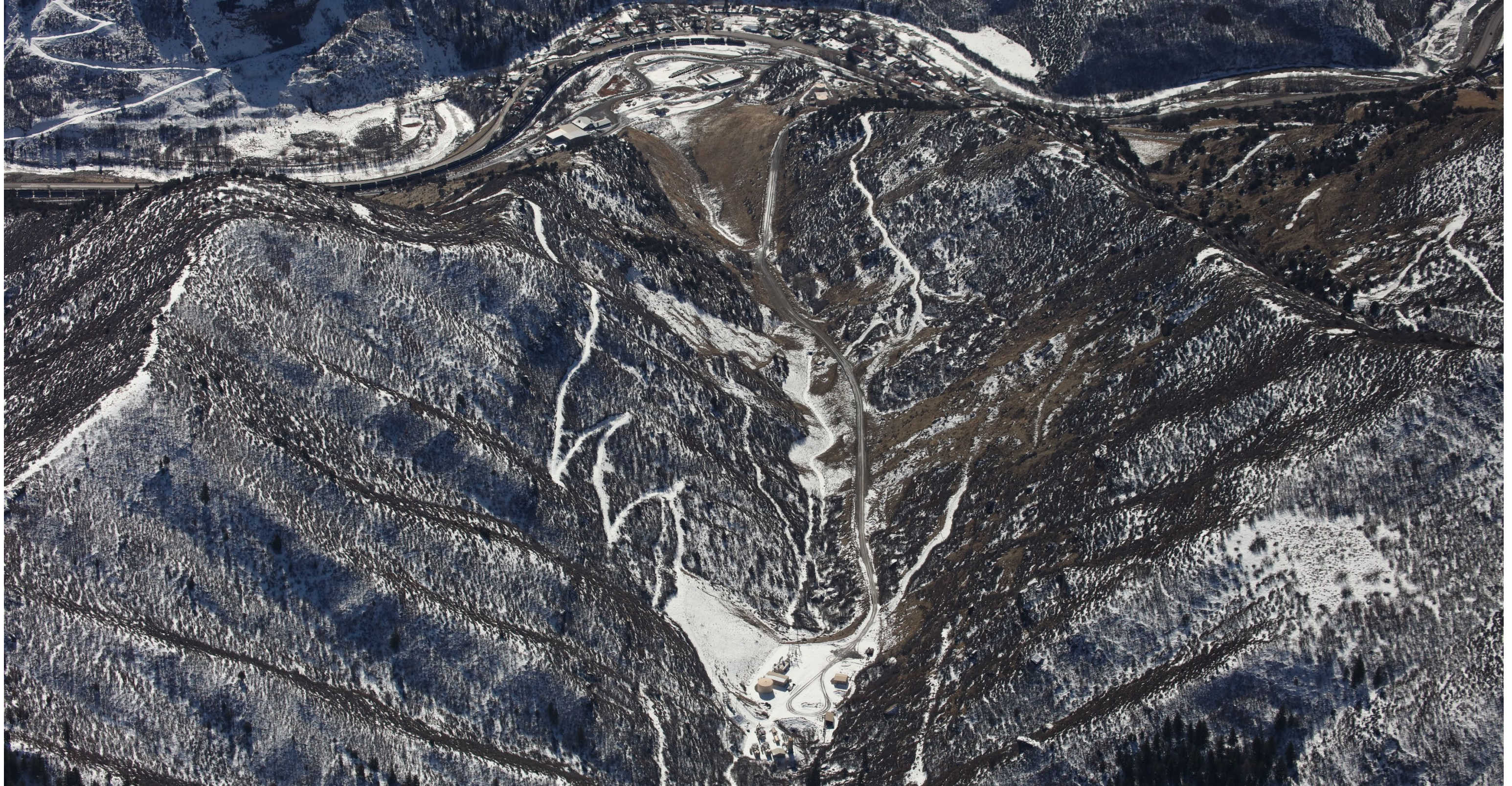


Figure 12: Lower section of reclaimed Elk Creek channel, from north

Number of Partial Inspection this Fiscal Year: 6

Number of Complete Inspections this Fiscal Year: 2





*Figure 13: Overview of Elk Creek facilities from north*

Number of Partial Inspection this Fiscal Year: 6

Number of Complete Inspections this Fiscal Year: 2