

**ENGINEERS CERTIFICATION**  
I, Trevor B. Ragsdale, hereby certify that this map has been reviewed by me and is true and correct to the best of my knowledge and information, relying on information supplied by experts employed by Elk Ridge Mining and Reclamation, LLC or qualified consultants working for Elk Ridge Mining and Reclamation, LLC, and that I am a Professional Engineer licensed in Colorado as required by the provisions of C.R.S. 12-25-101 through C.R.S. 12-25-119. IN WITNESS WHEREOF, I have herunder set my hand and affixed my seal.



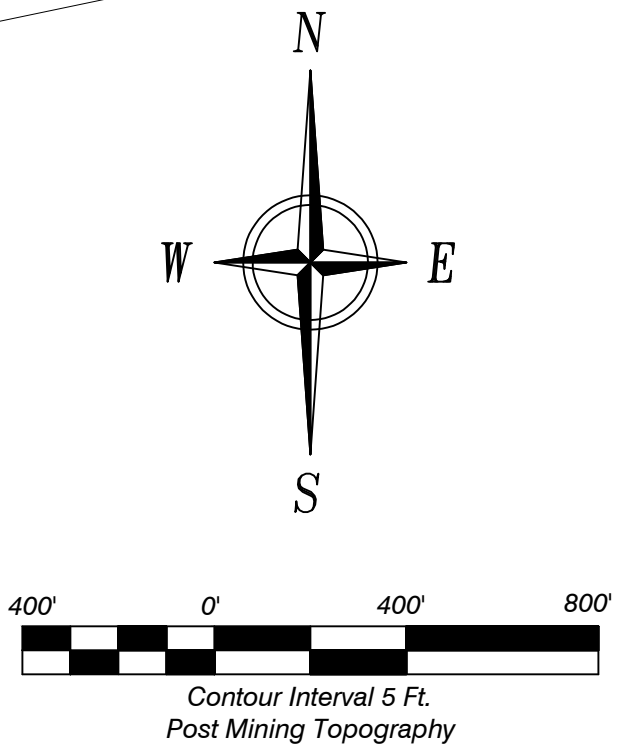
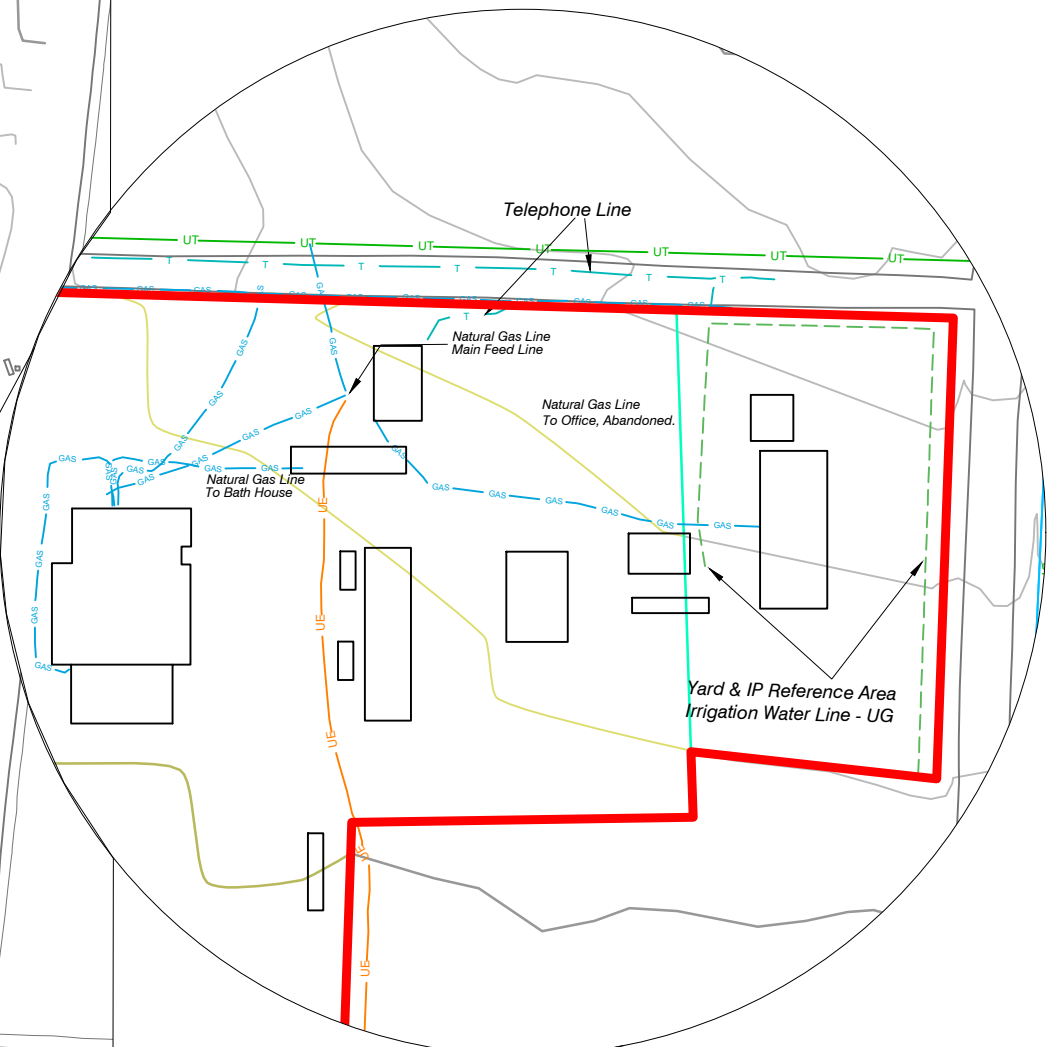
Utility Location



SCALE: 1" = 400'  
ORIGINAL DATE: 5/15/2015  
DWG. BY: ESI/ITCP  
APPROVED BY: FKF

DWG NO.  
Map 2.05.3(3)-3

NO.	REVISION	DATE	BY	CHK
TR-102	Revised Permit Boundary	2/22/21	Tony	FF
PR-09	Revised Irrigated Area (Lloyd Property)	4/21/22	Tony	Tony
TR-106	Revised Permit Boundary	2/22/23	Tony	TR
TR-108	Revised Permit Boundary, Irrigated Areas, PMT	1/24/24	Tony	TR



Legend

- Permit Boundary

Electric Line Overhead

Electric Line Underground

Natural Gas Office Area

Pipeline Surface

Pipeline Underground

Sideroll Sprinklers

Irrigated Areas

Buildings
- Streams

Water Pump

Road

Sewer

Telephone Office Area

Telephone Underground

Utility Pole

Disturbance Boundary

Township & Range

Note: Further details regarding the temporary moving and replacing of utilities can be found in Section 2.05.3(3).