

Surface Water Hydrology  
(Surface Water Features and Controls)



New Horizon Mine  
Permit No. C-1981-008  
P.O. Box 628, Nuclea, CO. 81424

SCALE: 1" = 400'  
ORIGINAL DATE: 5/15/2015  
DWG. BY: ESI/TCP  
APPROVED BY: FKF

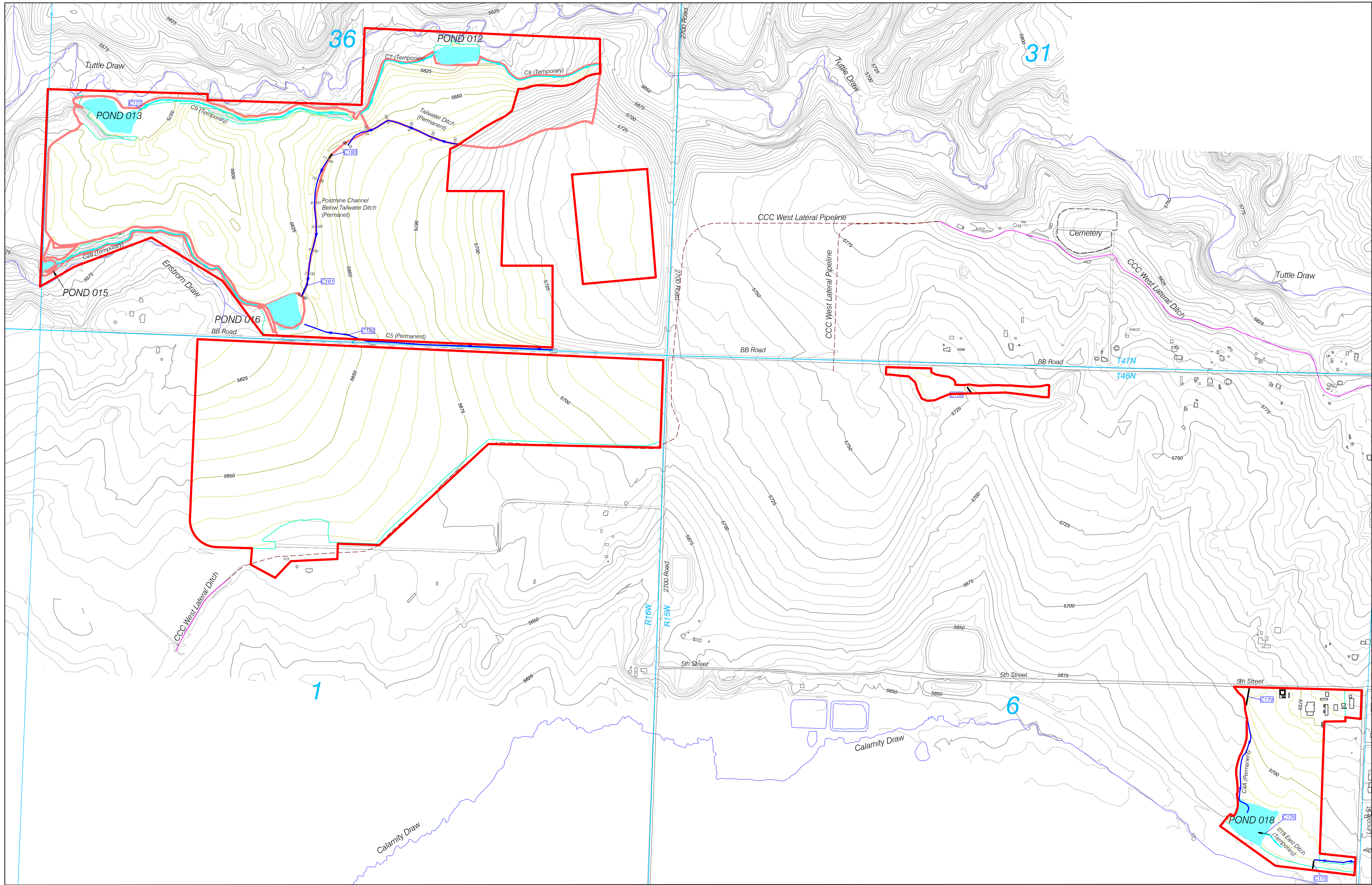
DWG NO.  
Map 2.05.3(3)-1

NO.	REVISION	DATE	BY	CHK
TR-105	Revised Permit Boundary	5/19/22	Tony	TR
TR-106	Revised Permit Boundary	2/22/23	Tony	TR
TR-107	Added Culverts C181 & C182, Updated Legend	6/21/23	Tony	TR
TR-108	Revised Permit Boundary, Ditches, and PMT	1/24/24	Tony	TR

ENGINEERS CERTIFICATION  
I, Trevor B. Ragsdale, hereby certify that this map has been reviewed by me and is true and correct to the best of my knowledge and information, relying on information supplied by experts employed by Elk Ridge Mining and Reclamation, LLC or qualified consultants working for Elk Ridge Mining and Reclamation, LLC, and that I am a Professional Engineer licensed in Colorado as required by the provisions of C.R.S. 12-25-101 through C.R.S. 12-25-119. IN WITNESS WHEREOF, I have hereunder set my hand and affixed my seal.

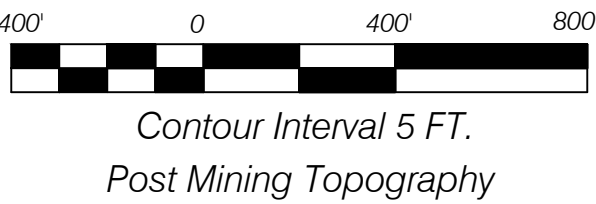
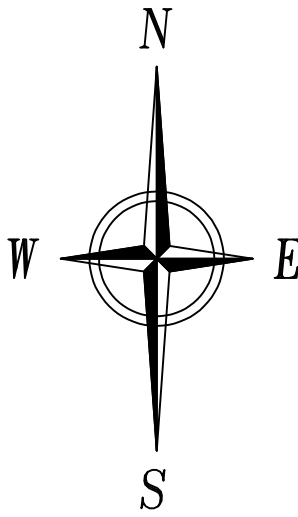


List Of Culverts			
Item	Dia. X Length	Type	Designation
C138	18" X 60'	HDPE	Temporary
C175	24" X 60'	CMP	Temporary
C176	18" X 90'	CMP	Temporary
C177	18" X 20'	HDPE	Temporary
C179	18" X 140'	CMP	Temporary
C180	18" X 40'	CMP	Temporary
C181	18" X 40'	CMP	Permanent
C182	18" X 30'	CMP	Permanent



Legend

- Permit Boundary
- Streams
- CCC West Lateral Ditch
- CCC West Lateral Pipeline
- Roads
- Disturbance Boundary
- Watershed Boundary
- Township & Range
- Culverts
- Buildings
- Temporary Ditches
- Permanent Ditches
- Sediment Pond or Stock Pond



Contour Interval 5 FT.  
Post Mining Topography