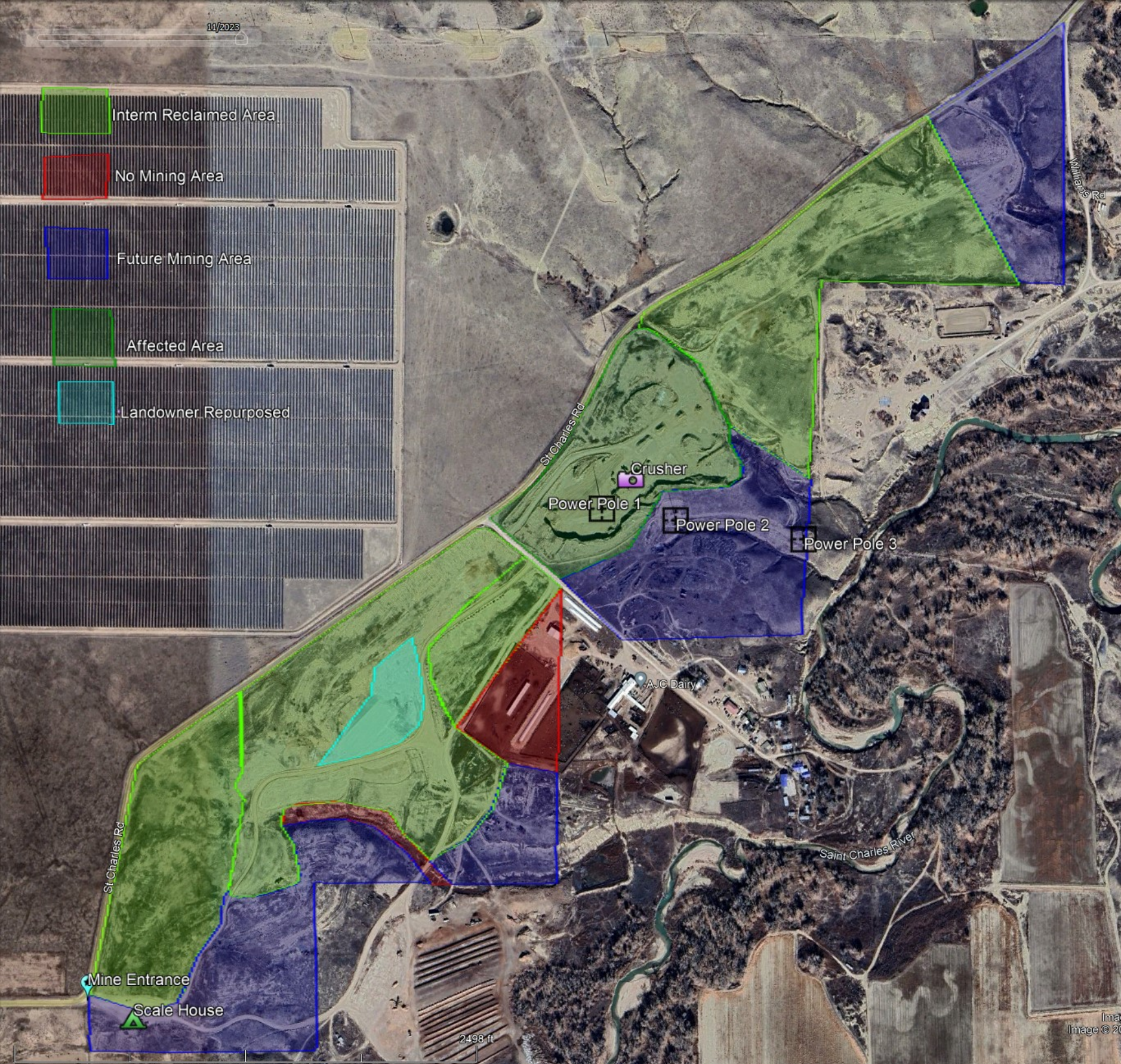


# Reclamation Plan Map for M-1998-101 Cesar Pit



## Reclamation Narrative:

Cover crop will be established rather than crimped mulch to provide protective seed cover for native species to become well established per the reclamation plan.

## Sequencing of reclamation:

- A. Grade pit floor
- B. Cover with 4-8" topsoil; (6" average)
- C. Scarify if necessary
- D. Fertilize if necessary
- E. Seed
- F. Mulch if necessary

The pit floor will be leveled with a pitch to the south. There will be little to no backsloping as the operation consists solely of removing the tops of some knolls. The only backsloping anticipated will be along the permit boundaries where the adjacent topography dictates. Grading will consist of minor undulation, with rougher surfaces preferred over smooth to combat runoff.

All slopes will be finished to 3:1 maximum. Rip-rap will be used at areas of concentrated flow where the arroyos enter and exit the property.

Weed control plan includes the removal of tamarisk and any other noxious weeds encountered within the permit boundary.

The final land use of the permitted area is agricultural grazing and ranchland. A portion of the permit area has been repurposed by the landowner for ranch operations. Approximately 4 acres.

The adjacent land uses are agricultural with a commercial solar farm and industrial power plant nearby.

Total permitted area is 180 acres.

The expected physical appearance of the area of affected land will include temporary stockpiles of material being mined and topsoil reserves at manageable safe slopes to prevent hazards and site erosion.

The northeast mining area will be accessed via St Charles Rd as to not effect the adjacent areas in interm reclamation. Wheeled travel will be restricted in areas of reclamation.

Areas marked affected are used for mining, stockpiling and processing operations. Apx. 20.6 acres.

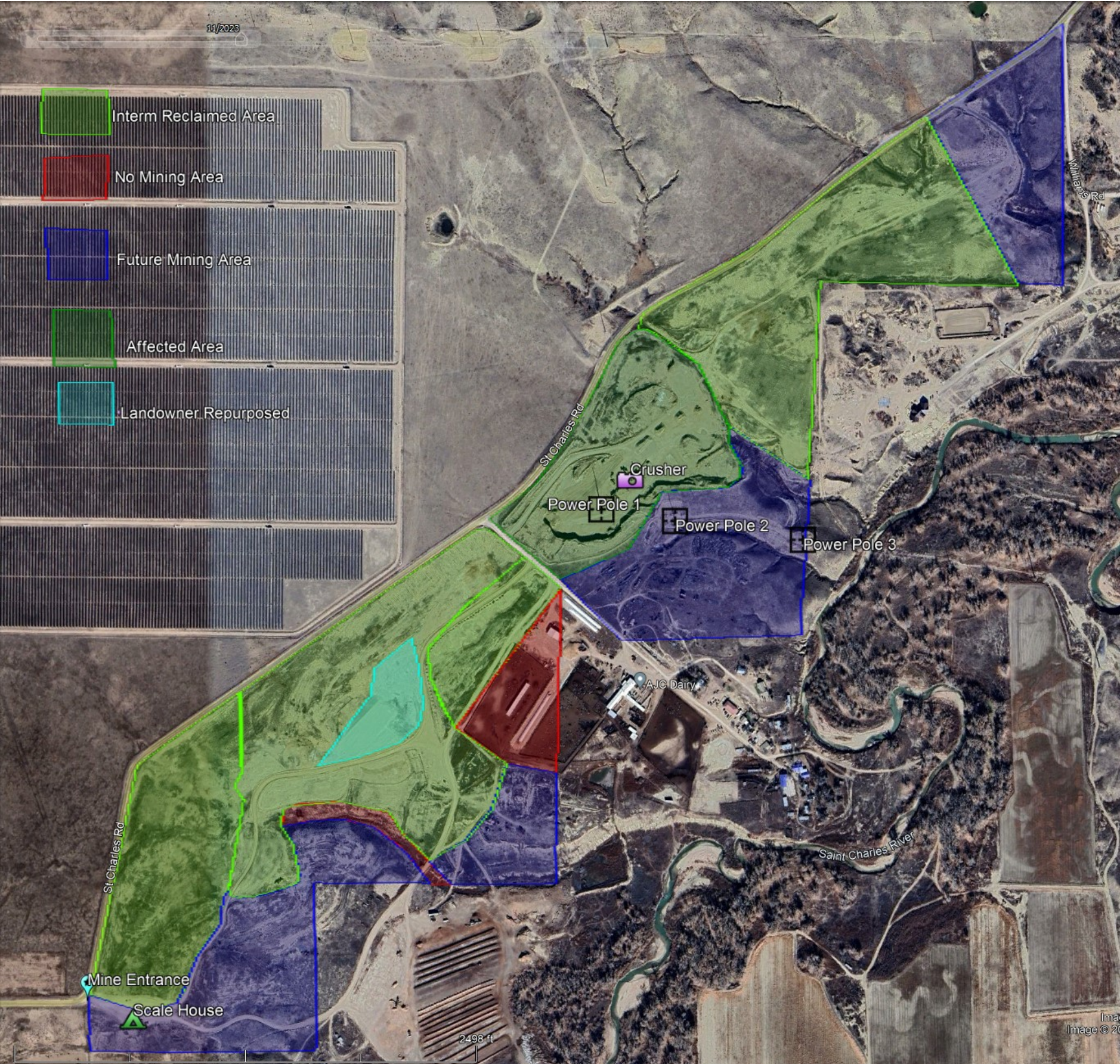
Areas in interm reclamation have been graded to final slopes, soiled and seeded. They will be monitored for vegetative growth and maintained from noxious weeds. These areas total 90 acres.

Tony J Beltramo & Sons, Inc

01/07/2024



# Annual Mining Plan Map for M-1998-101 Cesar Pit



Mining Plan Narrative:

Areas to be mined will have overburden/topsoil stripped by dozer or scraper and stockpiled for use in reclamation. Materials will be extracted by wheel loader or excavator for processing. Highwalls are anticipated along permit boundaries varying in heights up to approximately 20 feet.

Wheeled travel will be restricted in areas of interim reclamation. Physical barriers will delineate areas of travel.

Areas marked affected are in use for mining, materials stockpiling and processing during 2024. Approximately 20.6 acres.

The landowner has purposed approximately 4 acres at the previous crusher location for ranching operations.

Areas marked Interim Reclamation have been graded topsoiled and seeded. Approximately 90 acres.

Future mining areas to be backfilled, sloped and seeded. Approximately 62 acres.

Non-Mining areas are the southwest drainage area and corrals. Approximately 9 acres.