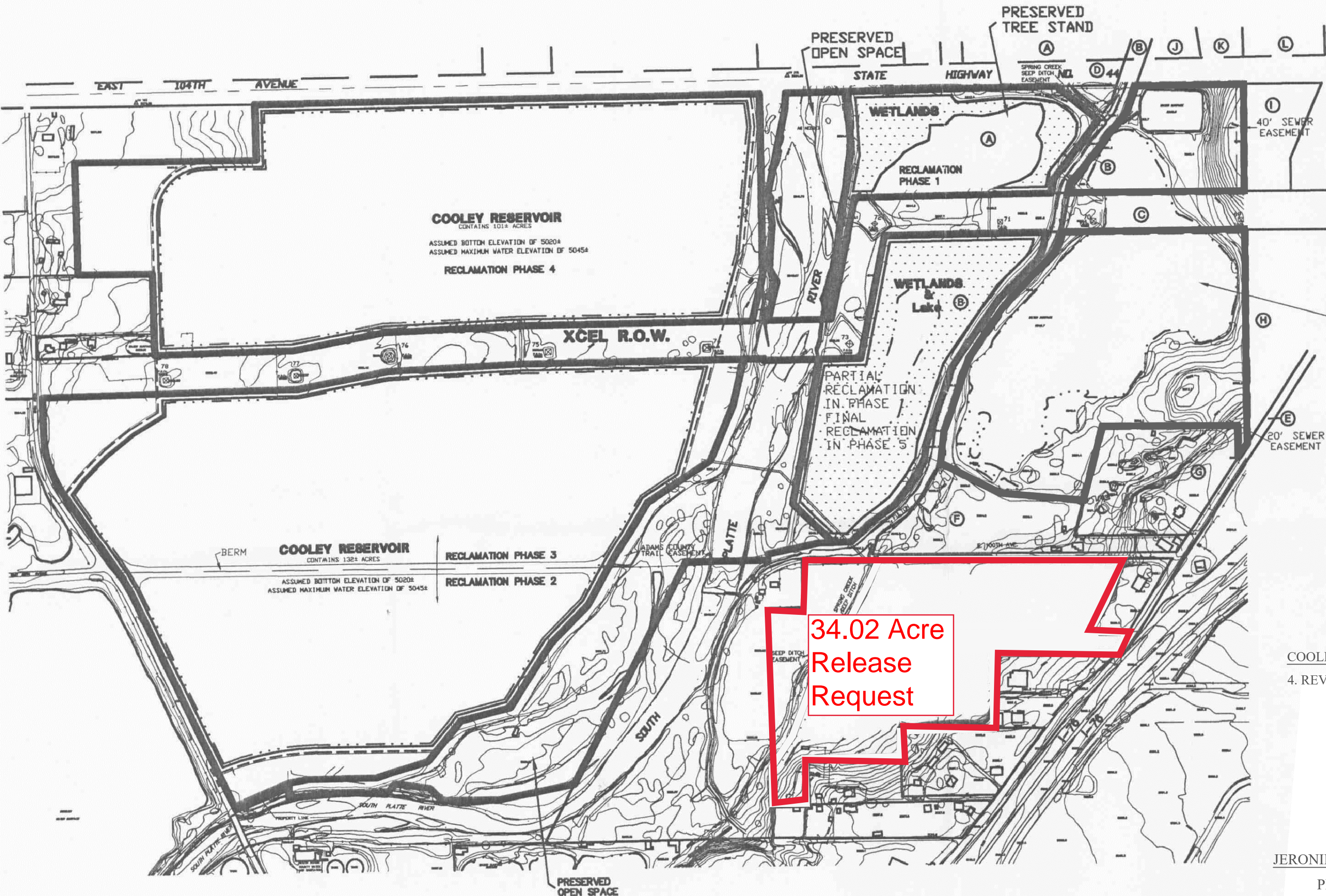


COOLEY RESERVOIR AND FULTON WILDLIFE AREA PIT
AMENDMENT NO. 1 - JERONIMUS PROPERTY
M - 1999 - 034, AM-1

NOTES:
THE BOUNDARY SHOWN HEREON IS APPROXIMATE.



LEGEND

- DENOTES: UPDATED PERMIT BOUNDARY OF AFFECTED LAND
- DENOTES: SLURRY WALL
- DENOTES: LIMIT OF EXCAVATION AND PHASES

SEE SHEET 2 OF 2 FOR RECLAMATION PLAN DETAIL FOR JERONIMUS PROPERTY

FULTON WILDLIFE REVEGETATION PHASES

- 1. PHASE 1A - WETLANDS
REVEGETATION - 6 ± ACRES
- 2. PHASE 1B - WETLANDS
TOPSOIL REPLACEMENT - 5 TO 25 ± ACRES
REVEGETATION - 5 TO 25 ± ACRES

COOLEY RESERVOIR REVEGETATION PHASES

- 4. REVEGETATION
PHASE 2 - 6472 ± LINEAL FEET x 50' / 43560 SQ. FT. = 7.5 ± ACRES TO BE REVEGETATED
PHASE 3 - 8730 ± LINEAL FEET x 50' / 43560 SQ. FT. = 10.0 ± ACRES TO BE REVEGETATED
PHASE 4 - 9652 ± LINEAL FEET x 50' / 43560 SQ. FT. = 11.0 ± ACRES TO BE REVEGETATED
* - 35' SETBACK + 15' TO WATER LINE x 1' = 50

JERONIMUS (AMENDMENT NO. 1) PROPERTY, PHASE 6

- PHASE 6A - GRASSLAND TOPSOIL REPLACEMENT & REVEGETATION - 10 ± ACRES
PHASE 6B - CREATED WETLANDS REVEGETATION - 15 ± ACRES

AREAS BY FINAL USE - ORIGINAL PERMIT

LAKE	- 231 ± ACRES
(WATER SURFACE AREA)	- 205 ± ACRES
OPEN SPACE/WILDLIFE	- 60 ± ACRES
CREATED WETLANDS	- 11 TO 31 ± ACRES
CREATED LAKE	- 20 TO 0 ± ACRES
TOTAL	- 322 ± ACRES

AREAS BY FINAL USE - AMENDMENT NO. 1

PRESERVED WETLANDS	- 10 ± ACRES
DRYLAND/OPEN SPACE (UNDISTURBED)	- 10 ± ACRES
DRYLAND/OPEN SPACE (DISTURBED)	- 10 ± ACRES
CREATED WETLANDS	- 15 ± ACRES
LAKE	- 5 ± ACRES
TOTAL	- 50 ± ACRES



LafargeHolcim CHICAGO, ILLINOIS		MOUNTAIN REGION	
		COOLEY-FULTON EXHIBIT F RECLAMATION PLAN - EXISTING & PROPOSED	
Date	Revisions	Scale: 1" = 500'	Job No:
		Drawn By: MES	Design By: G.A.B.
		Reviewed By: MES	Date: 09/29/2021
File: M:\MP&G-MOUNTAIN\THONRTON			Sheet: 1 of 1