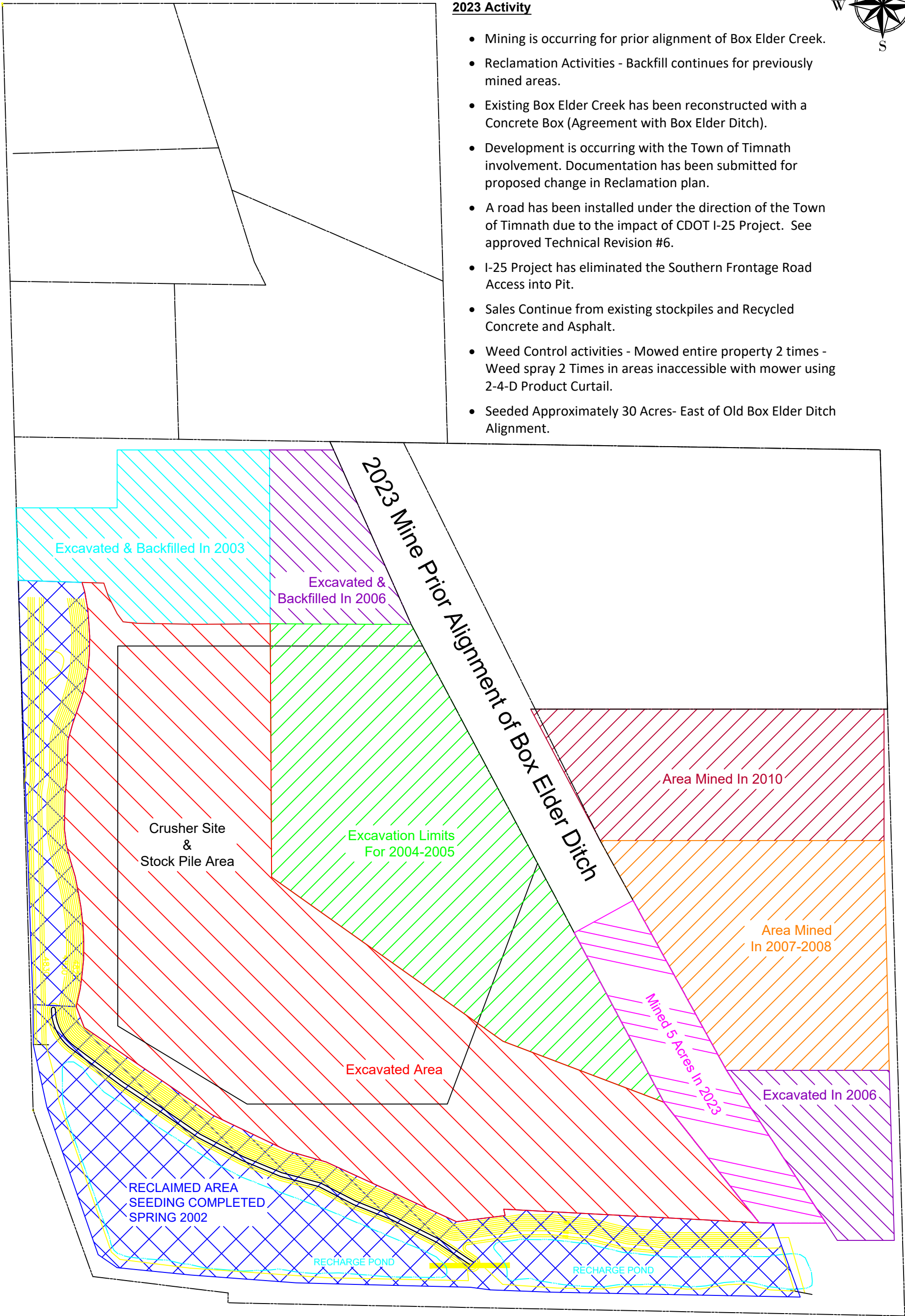


2023 Activity

- Mining is occurring for prior alignment of Box Elder Creek.
- Reclamation Activities - Backfill continues for previously mined areas.
- Existing Box Elder Creek has been reconstructed with a Concrete Box (Agreement with Box Elder Ditch).
- Development is occurring with the Town of Timnath involvement. Documentation has been submitted for proposed change in Reclamation plan.
- A road has been installed under the direction of the Town of Timnath due to the impact of CDOT I-25 Project. See approved Technical Revision #6.
- I-25 Project has eliminated the Southern Frontage Road Access into Pit.
- Sales Continue from existing stockpiles and Recycled Concrete and Asphalt.
- Weed Control activities - Mowed entire property 2 times - Weed spray 2 Times in areas inaccessible with mower using 2-4-D Product Curtail.
- Seeded Approximately 30 Acres- East of Old Box Elder Ditch Alignment.



General Notes				No.	Revision	Date
Project:				Annual Report Map		
Date:				Timnath Connell Pit		
Sheet Number:				December 8, 2023		
				1	Number of Sheets:	
					1	