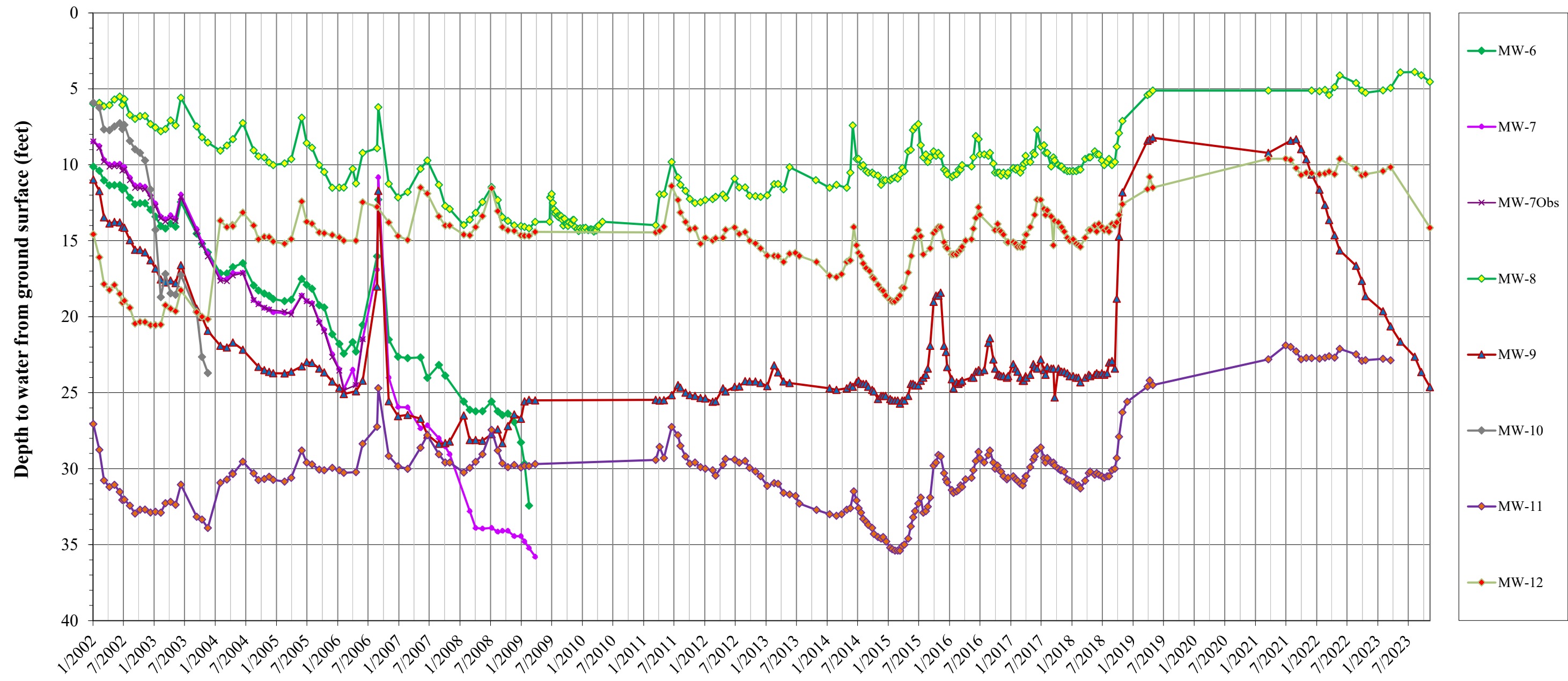
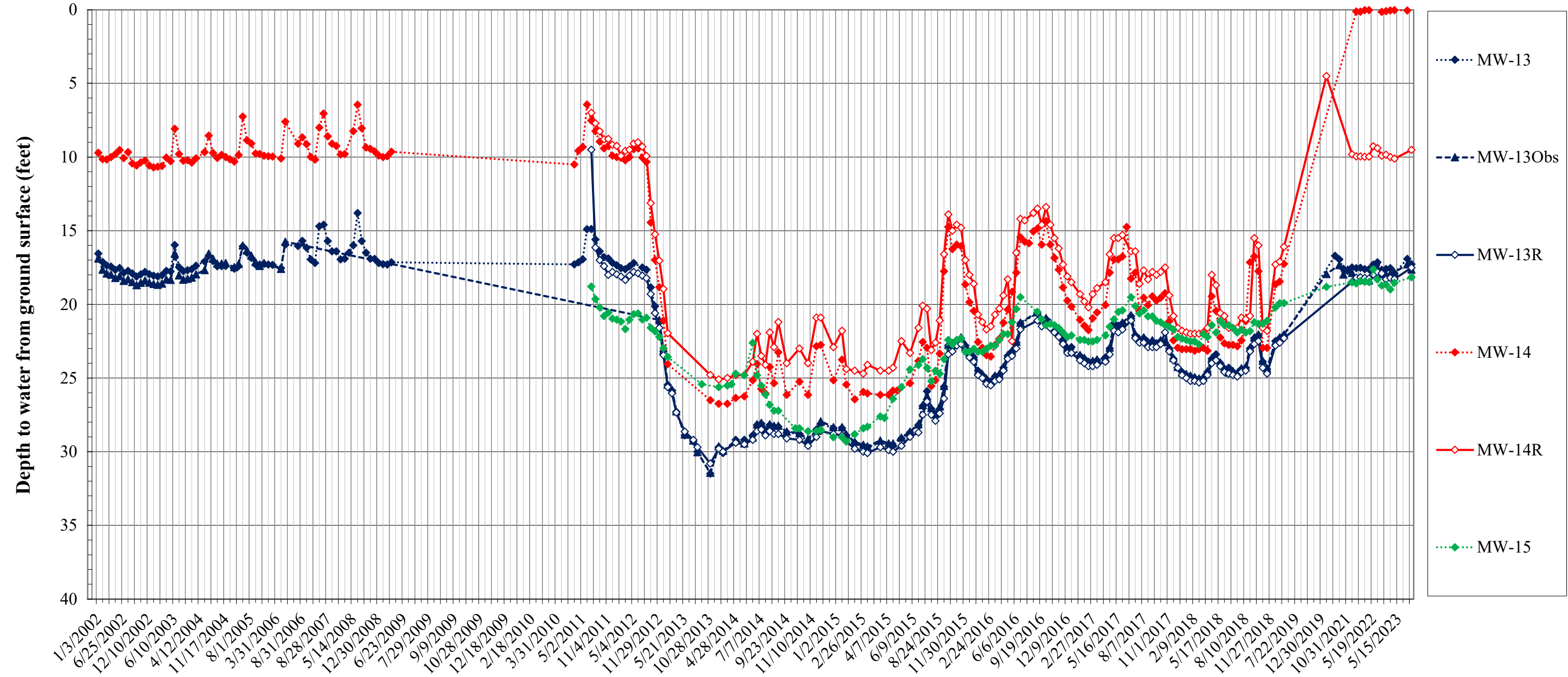


Figure 2
Castle Concrete Aggregates - Pueblo East Pit - Monitoring Wells
Depth to Ground Water
Phase 1 Area



Notes:
 -Several wells, including MW-6, 7, 7Obs and 10, have either been mined through and abandoned or are inaccessible and are no longer measured.
 -Significant decrease in depth to ground water in wells in September 2018 due to cessation of dewatering activities at the Phase 1 pit.

Figure 4
Castle Concrete Aggregates- Pueblo East Pit - Monitoring Wells
Depth to Ground Water
Phase 7 Area



Notes:

- Increase in depth to water starting in late 2012 due to beginning of dewatering operations at Phase 7.
- Gradual decrease in depth to water from late 2015 to April 2019 present due to reduction in the footprint of the dewatered area. Significant decrease in depth to ground water as of March 2021 due to cessation of dewatering activities at Phase 7 pit in October 2020.